



2025

July Report Transit/Fleet

Confessions of a Country: I'm not perfect. Consider me a work in progress. To all those I have hurt along the way, please accept my apology. Being able to truly forgive is a rare human quality, and anger begets anger. Have you ever wondered why a rearview mirror is so much smaller than a windshield? Perhaps where we are going is more important than where we have already been. Mistakes, yes, I've made my share. Regrets, yes, too many to list. Admitting I have faults is not easy, especially when people have such high expectations of me. Well, that's all for now. I have a birthday celebration to prepare for. Some say I don't look too bad for 249.

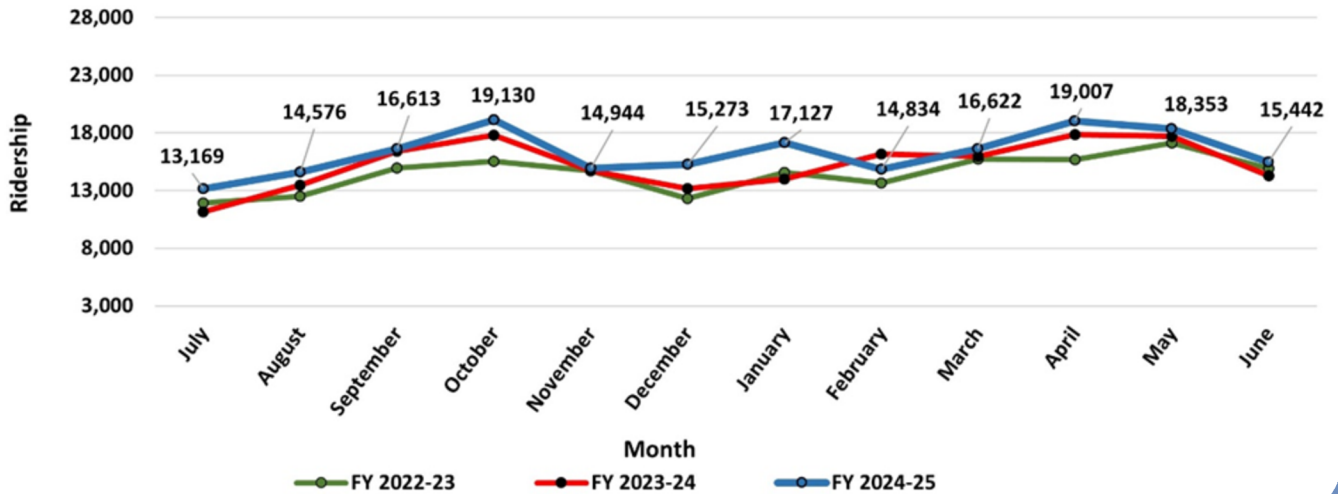
Dwight Brashear
Transit Director



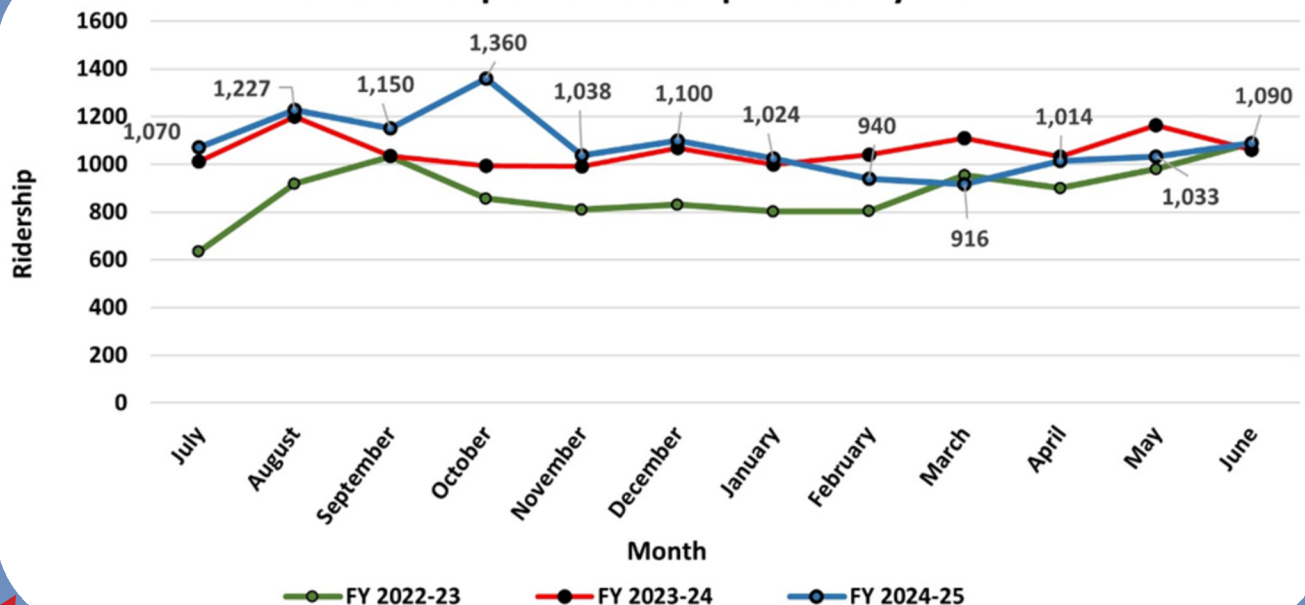
RIDERSHIP TRENDS

Anne MacCracken

Fixed Route Ridership Trends by Month



Demand Response Ridership Trends by Month



FLEET SERVICES

Scott Simonton

Fleet provides central fueling for all City owned vehicles and equipment and is responsible for tracking fuel usage and costs. We recently installed and onboarded a new fuel management system in our Boberg Road facility.

This is a cardlock system, with a cloud-based tracking component.

Improved capabilities over our old system include:

- Better card control: In the event a card is lost or stolen, we are able to remotely disable the card without vendor assistance.
- Real time tracking of fuel usage: In the past, batch fuel transactions needed to be downloaded prior to any data analysis. The new system allows us to look at fuel transactions as they happen.
- Improved reporting: Data can now be exported in a much more refined manner. We can report on individual vehicles, work groups, or entire divisions.

The new system became necessary as support was ended for our previous system, which was installed when the facility was originally constructed in 2012.



New Petro-Vend cardlock unit at Fleet

COMMUTE OPTIONS

Michelle Marston

The Easy Breezy Summer Rides Community Transportation Challenge began July 1 and runs through August.

Whether you're commuting to work or getting your daily needs, this challenge encourages participants to choose a sustainable transportation mode.

Participants only need to take a minimum of 8 trips via sustainable transportation to be entered into the raffle. The winner of the raffle will claim (1) \$100 e-gift card of their choosing. The drawing will be held on Sept 8, 2025. These challenges are run to encourage the use of alternatives modes of transportation, rather than driving alone.



GRANTS & PROGRAMS

Kelsey Lewis

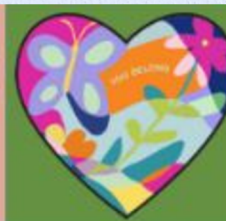
In July, SMART staff submitted grant applications to the Federal Transit Administration for three battery electric buses and associated charging equipment under the Low and No Emissions (AKA "LowNo") and Bus and Bus Facilities programs. These are very competitive programs with many more projects than available funding each year, and yet we are hopeful our project will be selected.

We included letters of support from the Wilsonville Chamber of Commerce, Portland General Electric, Metro, and a joint letter from Senator Wyden, Senator Merkley, and Representative Salinas. A timeline for awards has not been released but we expect an announcement sometime in the autumn.



SAFE ROUTES TO SCHOOL

Wyle O'Neill



In July, SMART hosted the HeARTs of Wilsonville Bike Tour in partnership with our Parks and Recreation Department. This was a creative, family-friendly event that brought residents together to explore Wilsonville's newest public art installations by bike. Riders visited all ten heart installations throughout town, promoting active transportation, local art appreciation and community connection.

We were joined by some of the artists along the route to speak to their project directly to those in attendance. The ride showcased safe biking routes through town while also highlighting the city's commitment to community wellness and placemaking. Turnout was strong, and feedback so far has been overwhelmingly positive.