

# Exhibit 'A'

## Griffin Land Surveying Inc.

6107 SW Murray Blvd. #409 – Beaverton, OR. 97008

Office: (503) 201-3116

OrePac PLA  
Project: 0864

**Right of Way Vacation  
Assessors Maps 31W23B  
City of Wilsonville, Clackamas County, OR.**

Tract 'A', Partition Plat No. 1990-92, Clackamas County Plat Records, situated in the N.W. 1/4 of Section 23, T.3S., R.1W., W.M. in the City of Wilsonville, Clackamas County, Oregon.

Contains 15,275 square feet, more or less.

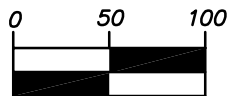
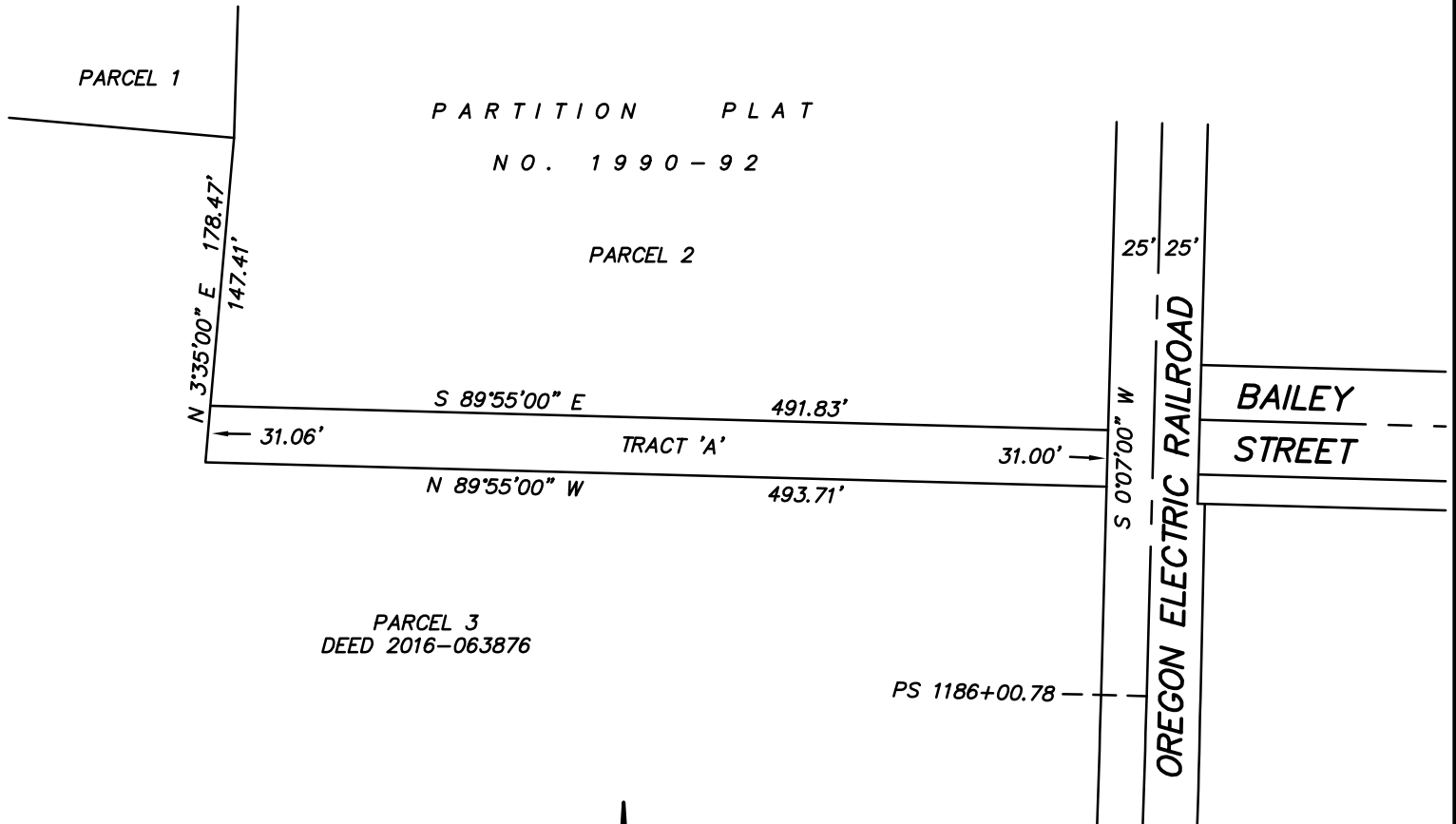


SKETCH TO ACCOMPANY LEGAL DESCRIPTION

RIGHT OF WAY VACATION

MAP 3S123B

CITY OF WILSONVILLE, CLACKAMAS COUNTY, OREGON



1 inch = 100 ft.

REGISTERED  
PROFESSIONAL  
LAND SURVEYOR

OREGON  
JULY 26, 1985  
KENNETH D. GRIFFIN  
2147

RENEWS: 6/30/25  
0864 OREPAC PLA

GRIFFIN LAND SURVEYING INC.

6107 SW MURRAY BLVD. #409  
BEAVERTON, OR. 97008  
(503) 201-3116