



**Willamette Water Supply Program
Wilsonville Area Pipeline Project
(PLM_1.3)
City Council Update**

December 5, 2022

05.01 2018

Willamette Water Supply Program Mission

Provide a cost-effective, reliable, and resilient water supply system by July 2026, that benefits current and future generations of the communities we serve and supports a vibrant local economy.



Great Partnership

- New water supply will serve the TVWD, the City of Hillsboro and the City of Beaverton customers and will be paid for by those ratepayers.
- Project includes street improvements for City of Wilsonville
 - Intersection improvements at Kinsman/Wilsonville Road
 - Intersection improvements at 95th/Boeckman Road
 - 95th road panel replacement
 - Intersection improvements along 95th
 - Fiber optic conduit along 95th

**RWF_1.0 Pump Station,
Electrical Building,
Seismically Reinforced
Riverbank, and Pipeline
Project**

Under Construction

Estimated Completion - September 2024

PLM_1.1 Pipeline

Construction Complete

**PLM_2.0 Pipeline-Kinsman Rd
Partnership Project**

Construction Complete

**PLM_1.2 Pipeline-Garden
Acres Rd
Partnership Project**

Construction Complete

PLM_1.3 South Section

Construction Start: November 2022

Estimated Completion: December 2024

PLM_1.3 North Section

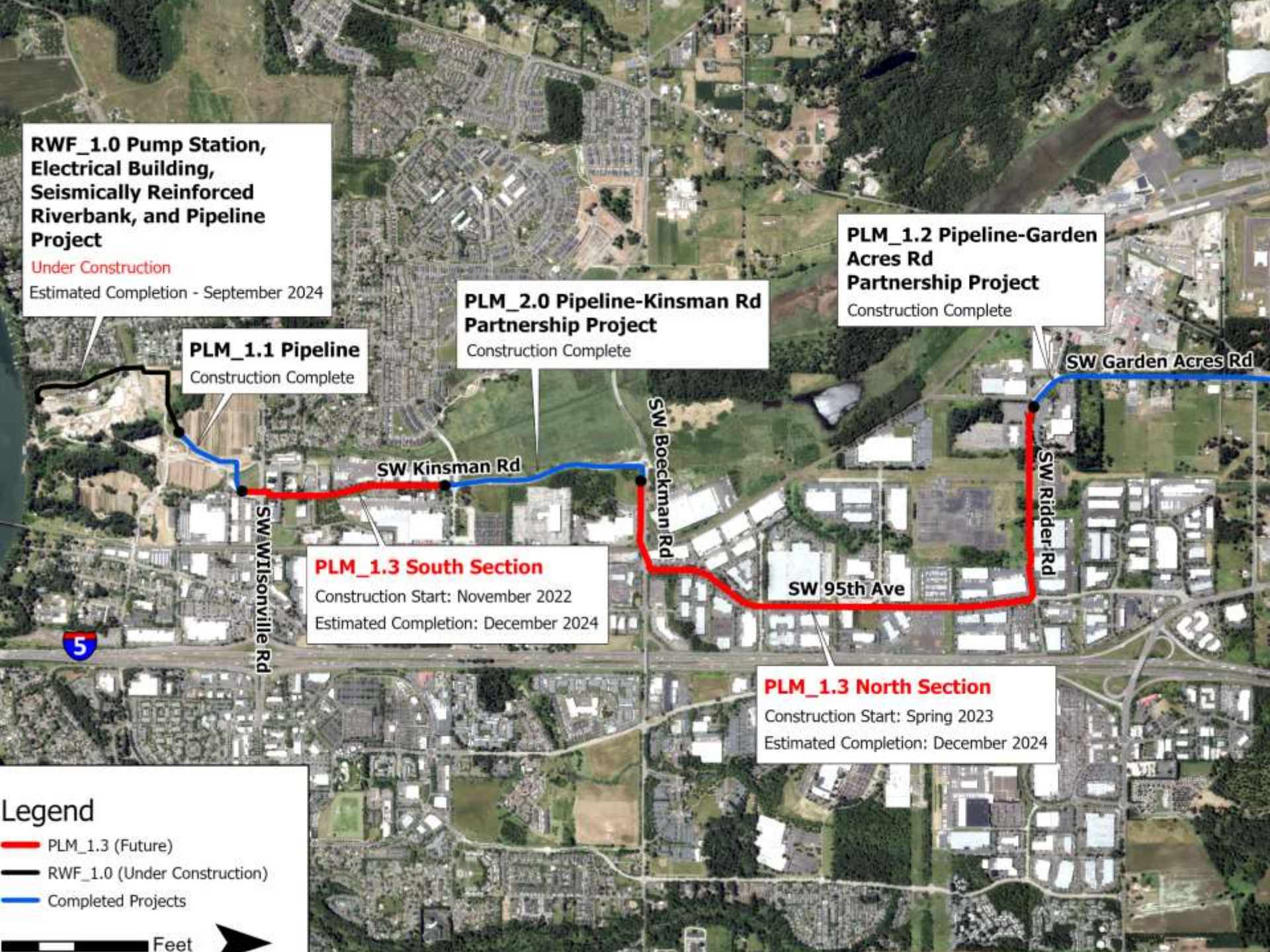
Construction Start: Spring 2023

Estimated Completion: December 2024

Legend

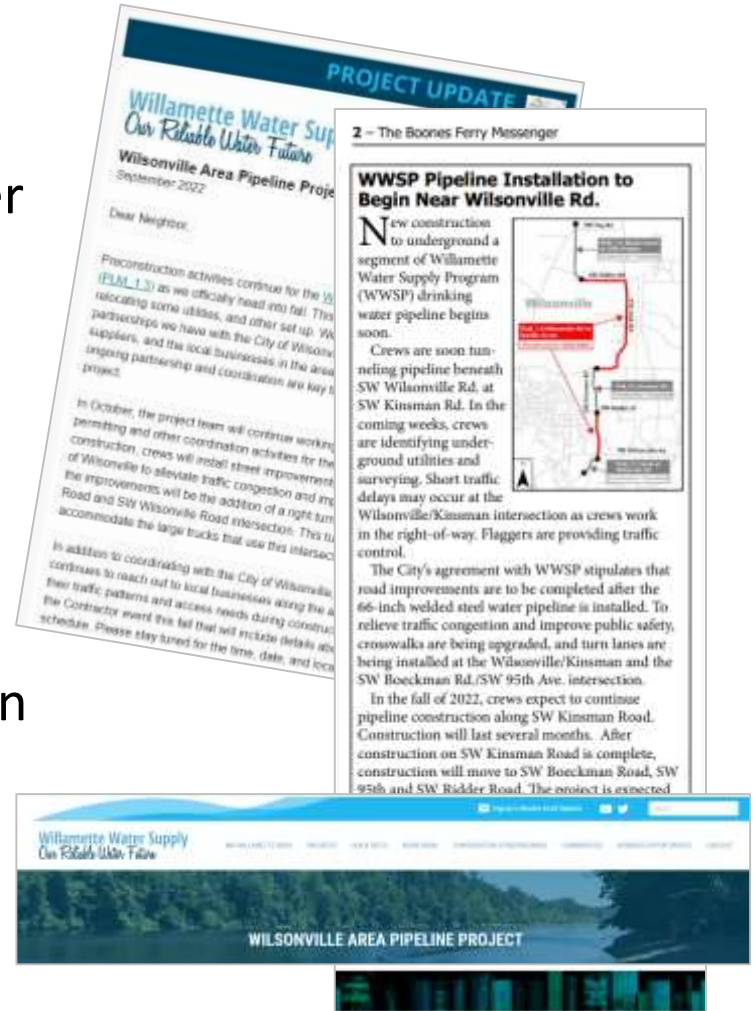
- PLM_1.3 (Future)
- RWF_1.0 (Under Construction)
- Completed Projects

Feet



Public Outreach History (Since 2019)

- ✓ Dedicated Project Webpage
- ✓ Monthly Project Update E-Newsletter
- ✓ Boones Ferry Messenger Articles
- ✓ Postcard Mass Mailing
- ✓ Door Knocking
- ✓ Construction Access Surveys
- ✓ Open Houses/Meet the Contractor
- ✓ Easement Outreach and Coordination
- ✓ Project Briefings
- ✓ Annual Program Updates Video



Targeted Outreach PLM_1.3

- Ongoing briefings and coordination with agencies
 - Tualatin Valley Fire & Rescue
 - City of Wilsonville
 - Clackamas County
 - Washington County
 - Metro
 - South Metro Area Regional Transit
 - West Linn – Wilsonville School District and Sherwood School District



Business and Owner Briefings

- More than 30 highly impacted businesses and property owners
- More than 40 construction access surveys from businesses along pipeline route

Businesses

AB Mauri
Audi Wilsonville
Coffee Lake Creek Logistics Center
Fred Meyer Fuel Center
Hartung Glass
Industrial Knife and Machine
(Owned by SSI)
Marten Transport
McLellan Estate Company
Portland Millworks
Prime Floral
REBCO (Tonkin Wilsonville Nissan)
Republic Services

Ridder Road LLC - McLean (Sun Belt
Rental)
Rose City Contracting
SSI Shredding Systems
Swire Coca Cola
Stafford Distribution Center
Tonkin Wilsonville Nissan
TNA North America
TVF&R Station 52
US Crane and Hoist
W-4 LLC (DW Fritz)
Wilsonville Chevrolet

Property Management/ Owner Representatives

CBRE
Downtown Development Group, LLC
LBA Realty
LBA-VA
Macadam Forbes
Norris & Stevens
PacTrust

List is a sampling and does not reflect
all previous business outreach

Ongoing Outreach

- ✓ Meet the Contractor Event/Open Houses
- ✓ Liaison Meetings for City Staff, School Districts, TVF&R, Transit
- ✓ Direct Construction Communications with Businesses
- ✓ Construction Information Flyers
- ✓ Door Knocking
- ✓ Project Web Page
- ✓ Monthly Updates E-Newsletter
- ✓ Boones Ferry Messenger Articles
- ✓ Mass Mailings to Community
- ✓ Portable Road Construction Message Signage
- ✓ Open for Business Signage
- ✓ Project Hotline
- ✓ TripCheck





**QUESTIONS?
THANK YOU!**

**Tammy Menkerud and
Marlys Mock
503-941-4570**

info@ourreliablewater.org
www.ourreliablewater.org