

PRE-DEVELOPMENT	
Q2	151.51
Q5	202.01
Q100	356.11

POST-DEVELOPMENT	
Q2	166.29
Q5	221.72
Q100	390.86

Δ DUE TO DEVELOPMENT	
ΔQ2	14.78
ΔQ5	19.71
ΔQ100	34.75

DRAINAGE AREA SUMMARY PRE-DEVELOPMENT									
AREA	ACRES	C'	Tc'	I2	Q2	I5	Q5	I100	Q100
1	28.45	0.80	20	3.51	79.89	4.68	106.52	8.25	187.77
2	29.46	0.45	20	3.51	46.53	4.68	62.04	8.25	109.37
3	10.98	0.30	15	4.10	13.51	5.44	17.92	9.60	31.62
4	5.08	0.35	15	4.10	7.29	5.44	9.67	9.60	17.07
5	4.28	0.35	15	4.10	6.14	5.44	8.15	9.60	14.38
6	1.65	0.35	15	4.10	2.37	5.44	3.14	9.60	5.54

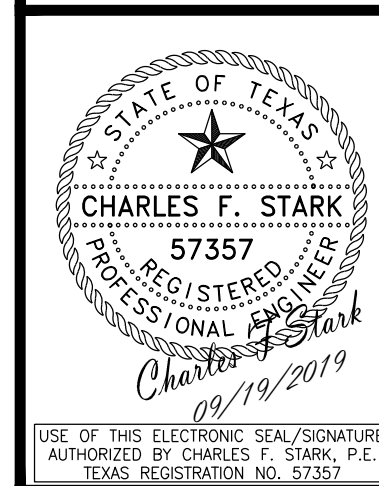
Rainfall Intensities Based on Stormwater Design Criteria Manual Table 3.1-2 For City of Weatherford

DRAINAGE AREA SUMMARY POST-DEVELOPMENT									
AREA	ACRES	C'	Tc'	I2	Q2	I5	Q5	I100	Q100
1	28.45	0.80	20	3.51	79.89	4.68	106.52	8.25	187.77
2	29.46	0.45	20	3.51	46.53	4.68	62.04	8.25	109.37
3	10.98	0.30	15	4.10	13.51	5.44	17.92	9.60	31.62
4	5.08	0.80	10	4.96	20.16	6.56	26.66	11.59	47.10
5	4.28	0.80	10	4.96	16.98	6.56	22.46	11.59	39.68
6	1.65	0.35	10	4.96	2.86	6.56	3.79	11.59	6.69

Rainfall Intensities Based on Stormwater Design Criteria Manual Table 3.1-2 For City of Weatherford

NO.	REVISIONS	DESCRIPTION	DATE

6221 Southwest Boulevard, Suite 100
 Fort Worth, Texas 76132
 (817) 231-8100 (F) 817-231-8144
 Texas Registered Engineering Firm F-10998
 Texas Registered Survey Firm F-10158800
 www.barronstark.com



USE OF THIS ELECTRONIC SEAL/SIGNATURE
 AUTHORIZED BY CHARLES F. STARK, P.E.
 TEXAS REGISTRATION NO. 57357

DRAINAGE AREA MAP & CALC'S
11 AC BANKHEAD HWY
 CITY OF WILLOW PARK
 PARKER COUNTY, TEXAS

CLIENT No. 380
 PROJECT No. 8602
 DESIGN: ---
 DRAWN: MHY
 CHECKED: CFS

DATE: 09/19/19
 SHEET
C4.0