

Delisias

4098 E I-H 20 service Rd south, Willow Park, Texas, 76087

Retrofit

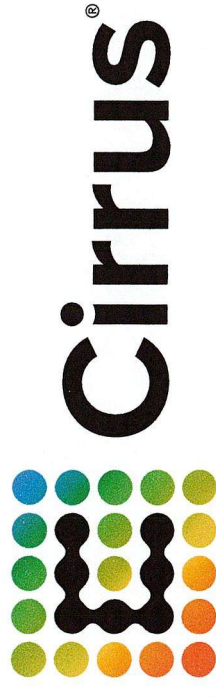
5'x8' 6mm Double-sided Display

Project ID:

Project Manager: Julie Cindric
Sales Rep: Sanka Harris

Date:

R0: 02/05/26



© Cirrus Systems, Inc. This drawing was created to assist you in visualizing our proposal. The original ideas herein are the property of © Cirrus Systems, Inc. Permission to copy or revise this drawing can only be obtained through a written agreement with © Cirrus Systems, Inc. See your account representative or contact your nearest office.

Cirrus Systems 200 West Rd. Portsmouth, NH 03801
Tel (877) 636-2331
Email info@cirrusled.com www.cirrusled.com

Parcel Details

Parcel ID
19510.005.004.00

Parcel Address
4098 E INTERSTATE 20 SERVICE RD S

Parcel Address City
WILLOW PARK

Parcel Address Zip Code
76087-3647

Regrid UUIID
e0399c50-9eff-4c6a-bc35-163604a9a889

Parcel Highlights

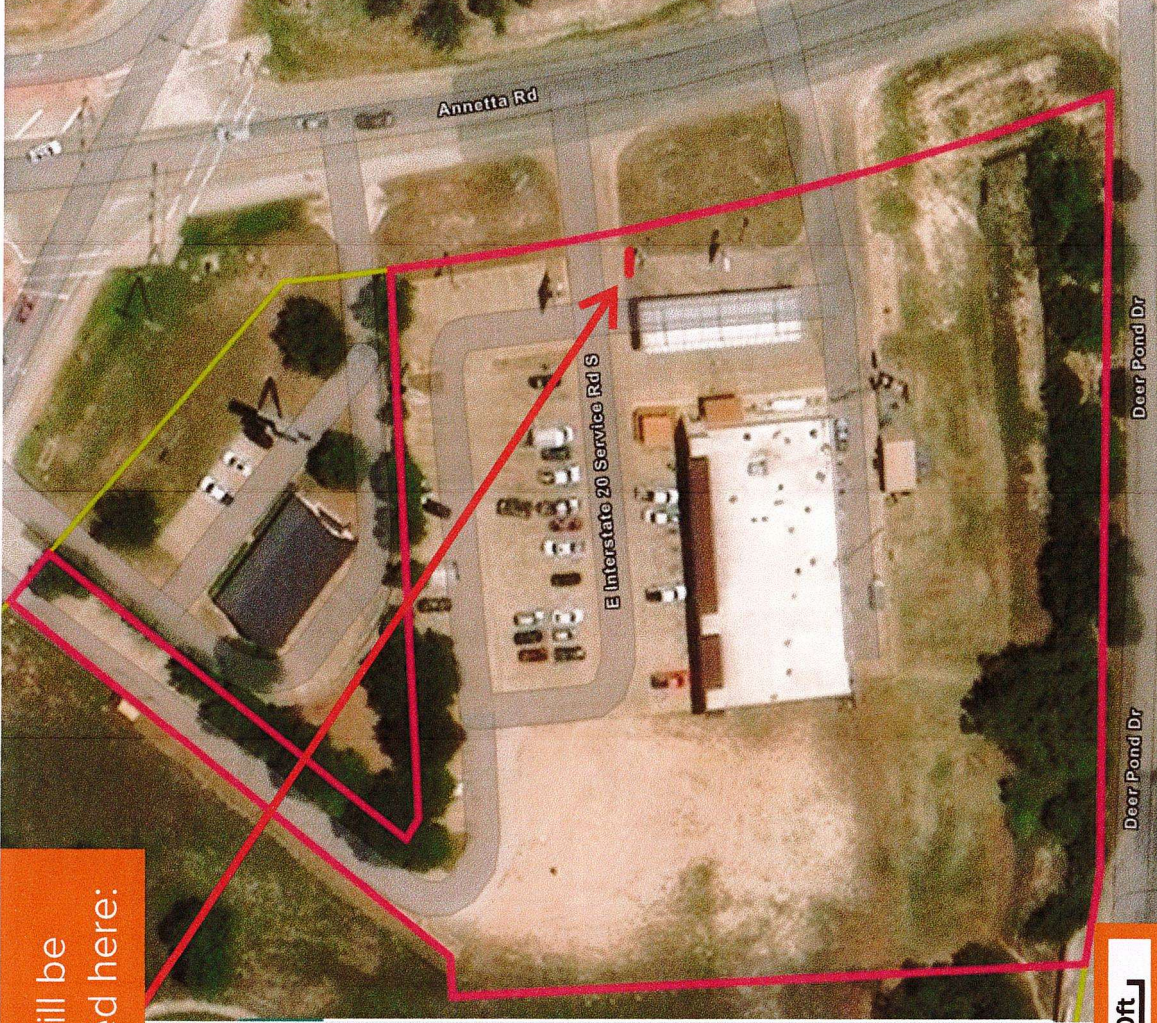
Full Address
**4098 E Interstate 20 Service Rd S,
Willow Park, TX 76087**

Measurements
3.33 Acres

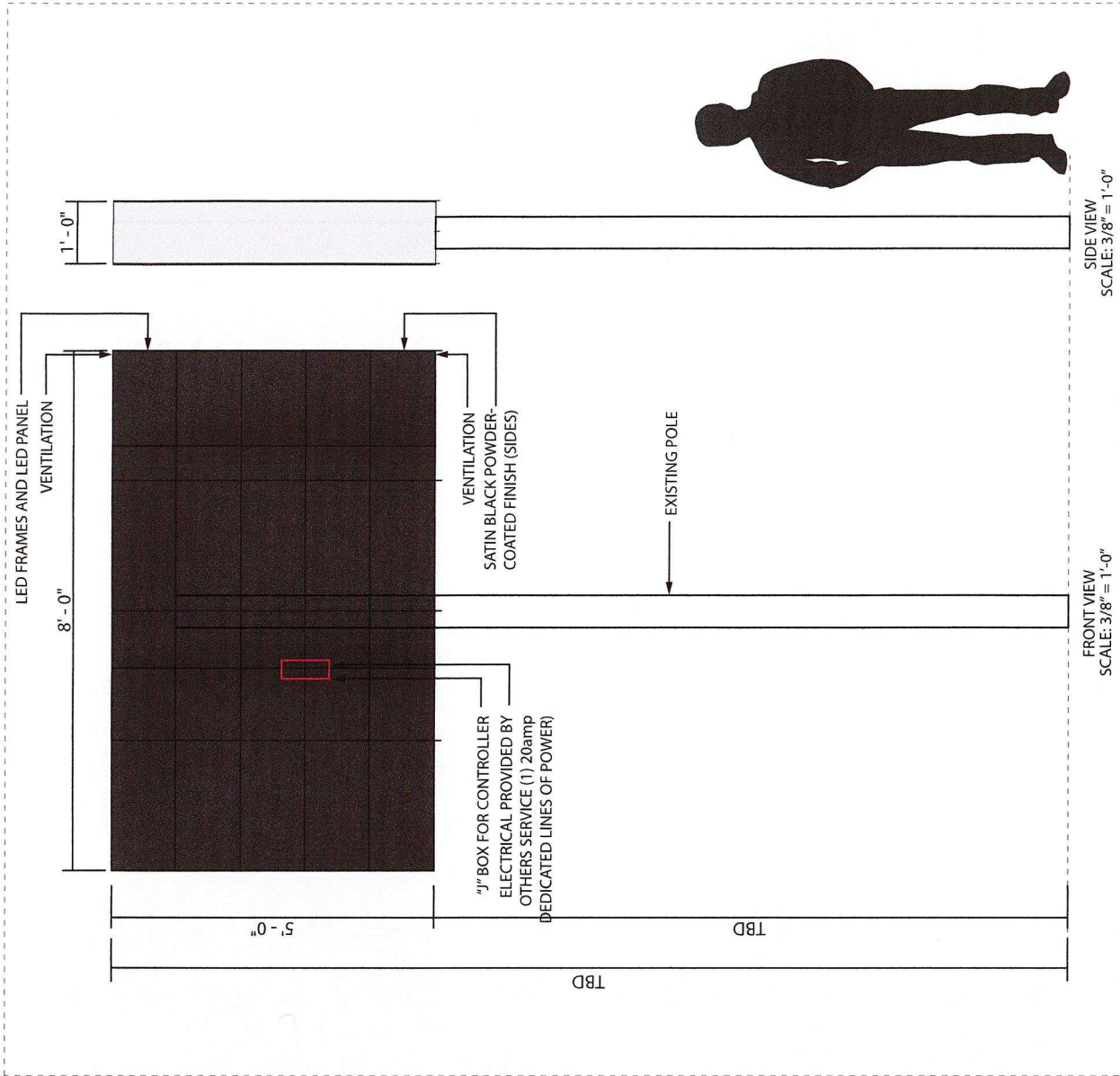
Owner
MULTAN LLC

Zoning type
Commercial

Sign will be installed here:

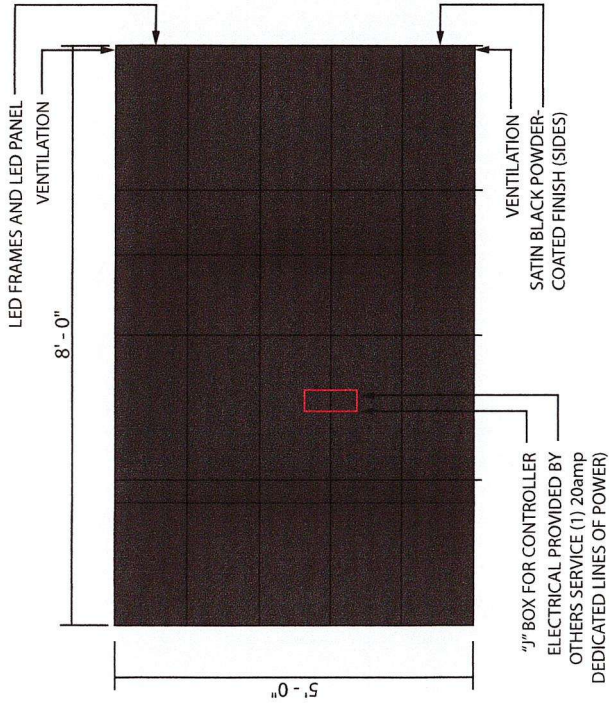


50ft



SCOPE OF WORK

RETROFIT-Replace existing sign cabinet with a 5'x8' double-sided 6mm Cirrus EMC.



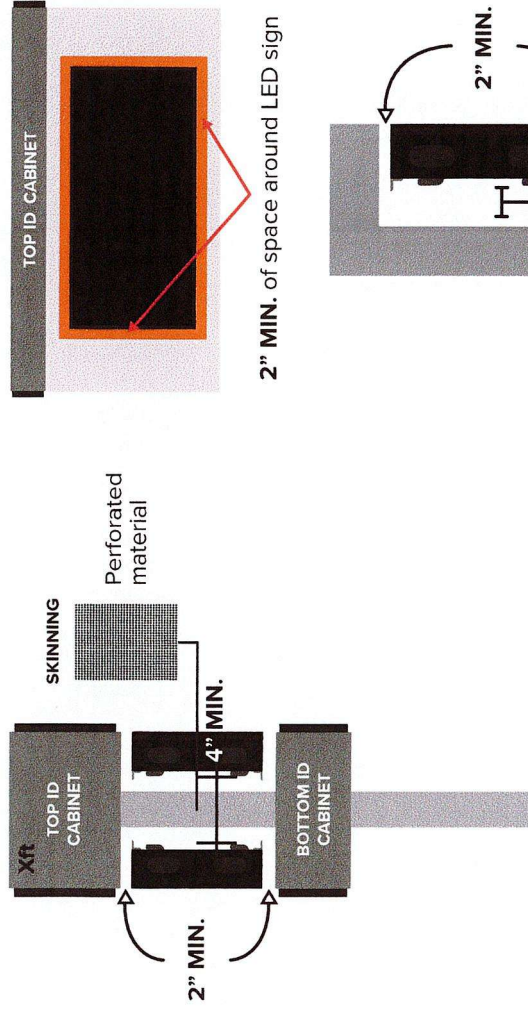
UNIVERSAL BRACKET MOUNT CABINET

ELECTRICAL:
 All Cirrus displays must be connected to separate, dedicated 20-amp circuits. Any static sign cabinets—whether new or existing—must also be placed on their own dedicated circuits.

POWER REQUIREMENTS CIRRUS LEDs:

Volts	Pitch	Mods	Sides	Lines of Power
120v	6mm	40	2	1

Static Cabinet Integration



2" MIN. space required on top and bottom of the display required to meet warranty. To increase convection, the sides of the display can be left open or covered with a perforated material.

Product information

Color	281 Trillion
Resolution (pitch)	12, 9, 6, and 4mm
Brightness (NITS)	7500
Intensity (Foot-Candles)	697 Foot-candles
Panel dimensions	24"W / 12"H / 4 1/8"D / 11.2 lbs
Module matrix	12mm 24x48 / 9mm 32x64 / 6mm 48x96 / 4mm 64x128
Max watts per panel	12mm 70W / 9mm 105W / 6mm 115W / 4mm 130W
Min viewing distance	12mm 20ft / 9mm 12ft / 6mm 8ft / 4mm 4ft
Viewing angle	160° Horizontal / 90° Vertical
Refresh rate	24-60 FPS (dependent on display)
AC input	Universal AC input (90-264VAC input range)
Temperature rating	-40°-158° Fahrenheit
WiFi connection	TP Link long-range high power bridge
Cellular broadband	5 Year cellular broadband available
Display life span	100,000 Hours
Warranty	5-year limited hardware / 5-year service (optional)
Approvals	FCC, UL 897, CAN/CSA-C22.2 No 207-M89

Features

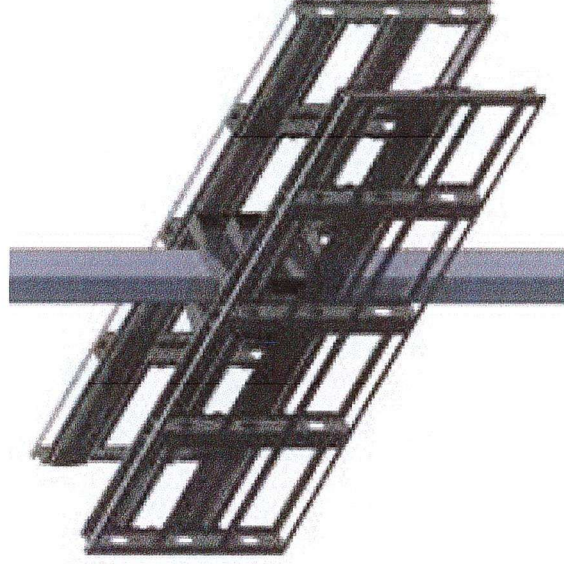
- Solid-state technology
- IP65 rated with built-in power supply
- Future-proof modular architecture
- 24-48 hour turnaround time

Includes

- Aluminum frames and hex bolts
- LED modules and controller
- Power and data cables
- ScreenHub software + lifetime training & support

Specs

High-strength extruded aluminum frame



Single Square Pole



To whom this may concern:

Cirrus LED, a New Hampshire-based manufacturer, provides effective indoor and outdoor LED displays for on-premise marketing. We develop revolutionary, easy-to-use, captivating, and affordable digital signage solutions for all businesses.

Cirrus guarantees that the display's maximum brightness (nit level) will be factory pre-set not to exceed city ordinance and is protected from end-user manipulation; access is restricted to Cirrus Systems, Inc. engineering.

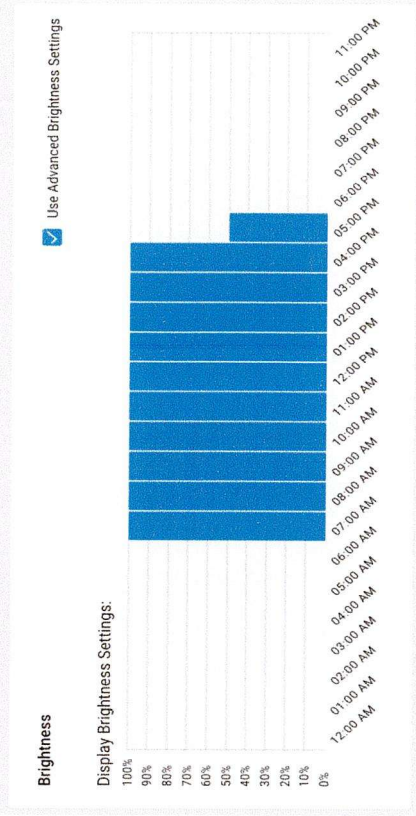
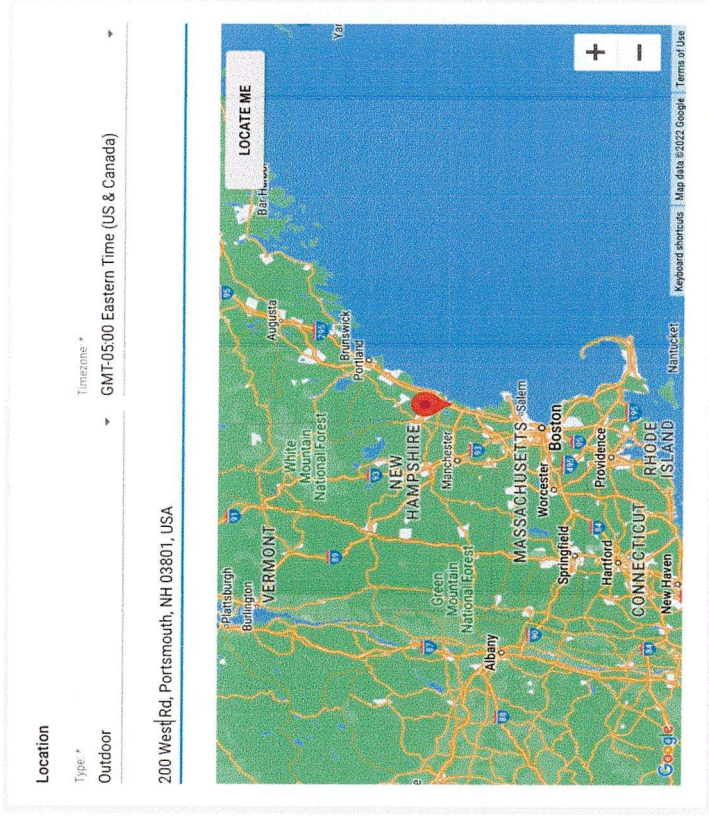
The Cirrus display is fully programmable and adjustable using our proprietary ScreenHub software. Brightness can be automatically dimmed based on the time of day and related events for every pixel.

Our integrated cloud software verifies specifications upon installation. The sign has a default mechanism to freeze in one position upon malfunction. The software can also maintain a static image for any required duration.

Slide scheduling/playing can be adjusted in one-second increments. Options to hold an image or turn the display black are easily accomplished through ScreenHub software.

Our displays are also manufactured to the highest standards domestically in Portsmouth NH, using premium components to work in the harshest conditions... direct sunlight, rain, snow, ice, or any other type of environment.

Please reach out to support anytime if further dialogue would be helpful to answer any other questions.



Your New Cirrus Display

Thank You!

