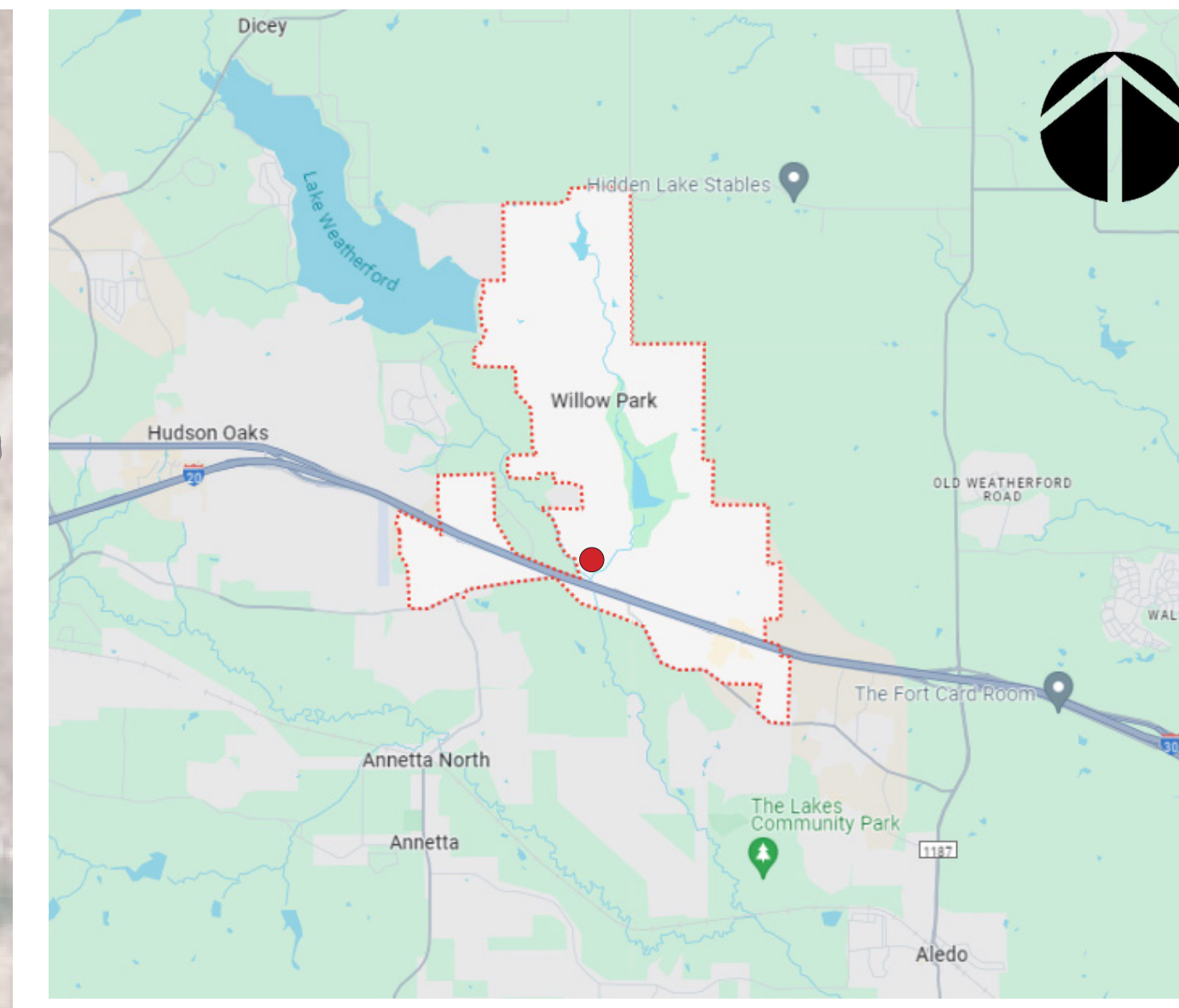
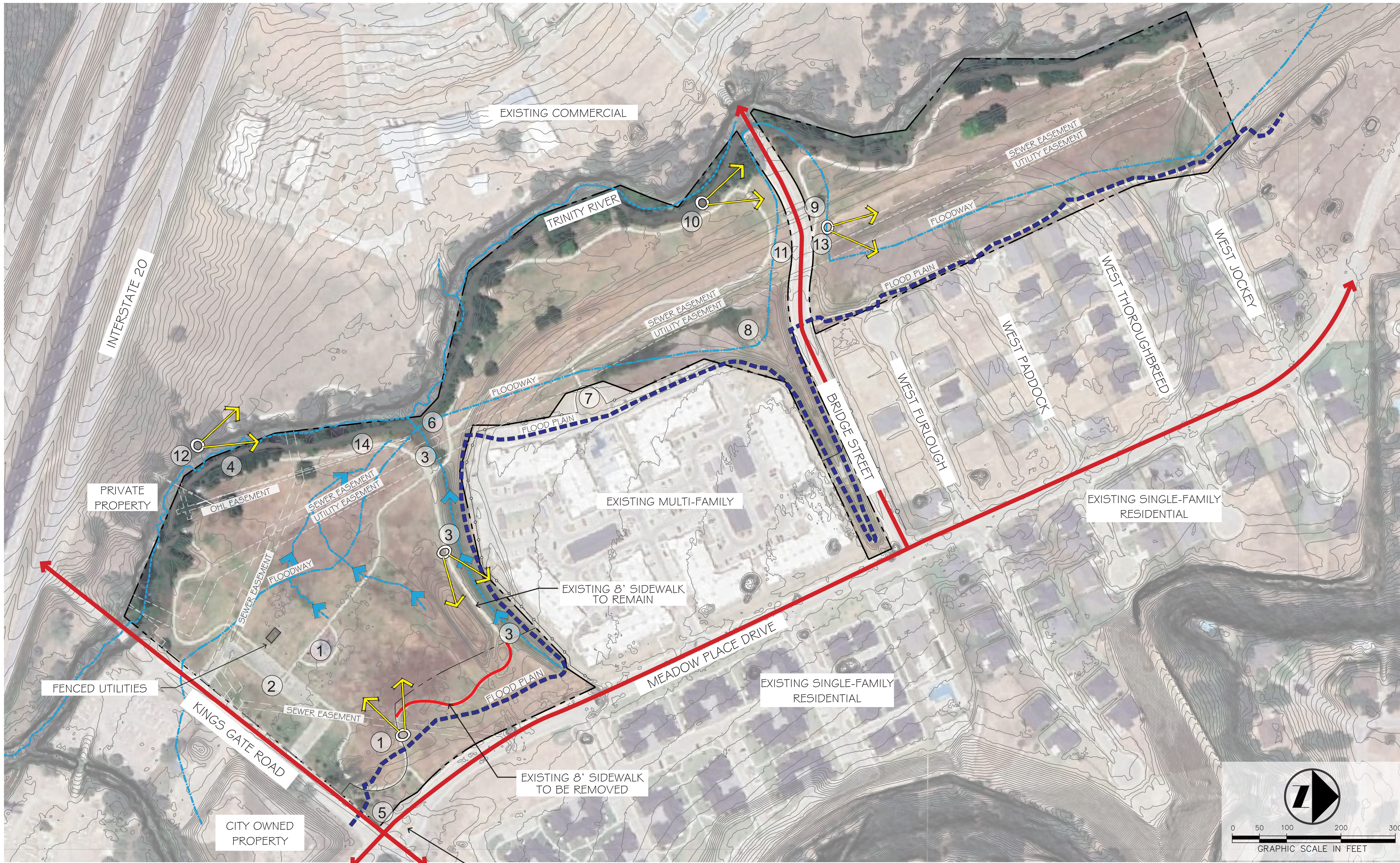


July 2024

City of Willow Park - Kings Gate Park

Master Plan: Conceptual Design



EXISTING CONDITIONS LEGEND

- ① PLAYGROUND
- ② PARKING LOT (19 EXISTING SPACES)
- ③ DRAINAGE
- ④ FISH SCULPTURE
- ⑤ MONUMENT SIGN
- ⑥ HISTORIC LANDMARK
- ⑦ DOG PARK
- ⑧ DETENTION POND
- ⑨ OPEN SPACE
- ⑩ RETAINING WALL, DOG STATION & TRASH CAN
- ⑪ CROSSWALK & RAMPS
- ⑫ TRINITY RIVER CREEK
- ⑬ EXISTING FIELDS
- ⑭ GAS LINE SIGN



① SOCCER FIELDS & PLAYGROUND



② EXISTING PARKING LOT



③ EXISTING DRAINAGE SWALE



④ FISH SCULPTURE



⑤ ENHANCED NEIGHBORHOOD ENTRANCE



⑥ HISTORIC RACE TRACK WATCH TOWER



⑦ MULTI-FAMILY DOG PARK



⑧ DETENTION POND



⑨ BRIDGE ST. WITH RIP RAP & DRAINAGE



⑩ RETAINING WALL, DOG STATION, TRASH CAN



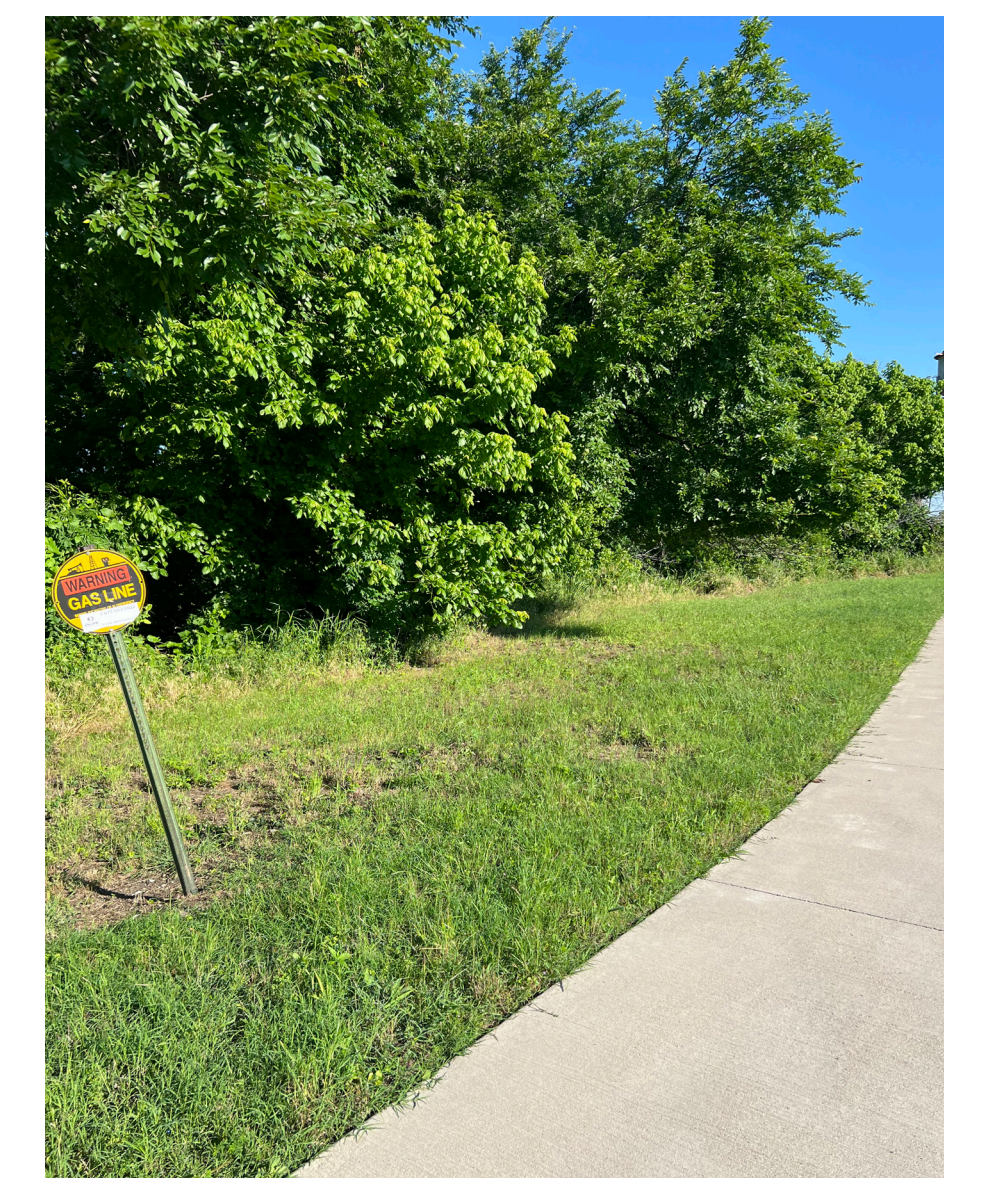
⑪ EXISTING CROSSWALK & RAMPS



⑫ EXISTING CREEK



⑬ EXISTING FIELDS



⑭ EXISTING GAS LINE

OLD WATCH TOWER ON SITE



LAND DEDICATION TO OLD CHAMPION



HISTORY OF KINGS GATE PARK

FORMERLY KNOWN AS TRINITY MEADOWS RACEWAY OR SQUAW CREEK DOWNS, KINGS GATE PARK WAS A PROMINENT AMERICAN RACING TRACK IN THE 1960S. ALTHOUGH IT HAS BEEN CLOSED FOR MANY YEARS, HISTORIC LANDMARKS STILL STAND WITHIN THE PARK.

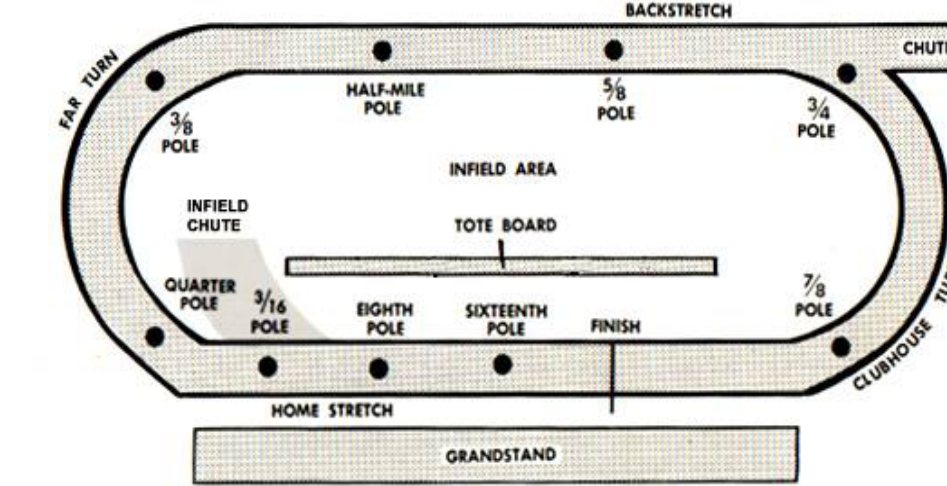
THE PROVIDED AERIAL VIEW SHOWS THE LAYOUT OF THE OLD TRACK AND ITS CURRENT STATE. IN THE PARK'S DESIGN, SPECIFIC AREAS WERE CHOSEN TO HIGHLIGHT ITS HISTORIC SIGNIFICANCE AND OFFER EDUCATIONAL OPPORTUNITIES. ADDITIONALLY, THE BRANDING OF THE SITE EMPHASIZES THE OLD HORSE TRACK, CREATING A CONNECTION TO ITS PAST AND PRESERVING ITS EXISTING LANDMARKS.



BRANDING INSPIRATION FOR HISTORIC ELEMENTS & EDUCATIONAL SIGNAGE



Canterbury Park track layout



modified from: Chew, Peter. The Kentucky Derby: The First 100 Years. Boston: Houghton Mifflin Company. 1974. p 32.





- PROGRAMMING LEGEND**
- FORMAL PLAY COURTS *
 - FENCED DOG PARK
 - UNREGULATED SOCCER FIELDS
 - PLAYGROUND EXTENSION*
 - BOARDWALK
 - SEATING AREAS *
 - OPEN LAWN
 - WATER FEATURE



MASTER PLAN CONEPT LEGEND

- ① ADDITIONAL PARKING
- ② PLAYGROUND EXTENSION
- ③ GATHERING SPACE HUB
- ④ PICNIC AREA
- ⑤ RESTROOM
- ⑥ SPORTS COMPLEX (BASKETBALL # PICKLEBALL)
- ⑦ DOG PARK (OPTIONAL)
- ⑧ UNREGULATED SOCCER FIELDS
- ⑨ BOARDWALK CONNECTION
- ⑩ REST STOPS / NATURAL SEATING (LUEDER BLOCKS)
- ⑪ EXISTING HISTORIC LANDMARK (FAR TURN)
- ⑫ HISTORIC EXHIBIT
- ⑬ TERRACED LAWN
- ⑭ HISTORIC SEATING AREA / EDUCATIONAL EXPERIENCE
- ⑮ EVENT SPACE WITH SEATING # STATIONARY GAMES
- ⑯ ENHANCED SEATING AREAS
- ⑰ OPEN SPACE FOR COMMUNITY / GRAND LAWN
- ⑱ STORMWATER FEATURE
- ⑲ HISTORIC MONUMENT ENTRY SIGN
- ⑳ ENHANCED LANDSCAPING
- ㉑ ENHANCED PAVING
- ㉒ DISC GOLF
- ㉓ MOUNTAIN TRAIL KID TRACK
- ㉔ BERMS



MASTER PLAN CONEPT LEGEND

- ① ADDITIONAL PARKING
- ② PLAYGROUND EXTENSION
- ③ PICNIC AREA / GATHERING SPACE HUB
- ④ EVENT LAWN / PICNIC SPACE
- ⑤ RESTROOM
- ⑥ SPORTS COMPLEX (BASKETBALL & PICKLEBALL)
- ⑦ DOG PARK (OPTIONAL)
- ⑧ UNREGULATED SOCCER FIELDS
- ⑨ BOARDWALK CONNECTION
- ⑩ SIMPLE SEATING AREAS
- ⑪ EXISTING HISTORIC LANDMARK (FAR TURN)
- ⑫ HISTORIC EXHIBIT
- ⑬ TERRACED LAWN
- ⑭ HISTORIC SEATING AREA / EDUCATIONAL EXPERIENCE
- ⑮ EVENT SPACE WITH SEATING & STATIONARY GAMES
- ⑯ ENHANCED SEATING AREAS
- ⑰ OPEN SPACE FOR COMMUNITY / GRAND LAWN
- ⑱ STORMWATER FEATURE
- ⑲ HISTORIC MONUMENT ENTRY SIGN
- ⑳ ADDITIONAL PARKING
- ㉑ ENHANCED PAVING
- ㉒ DISC GOLF
- ㉓ MOUNTAIN TRAIL KID TRACK
- ㉔ FOOD TRUCK SPACING
- ㉕ OPEN PLAY FIELD
- ㉖ BERMS

SEATING AREAS



ENHANCED STORMWATER FEATURES



WILDFLOWER MEADOWS



SPLASH PAD



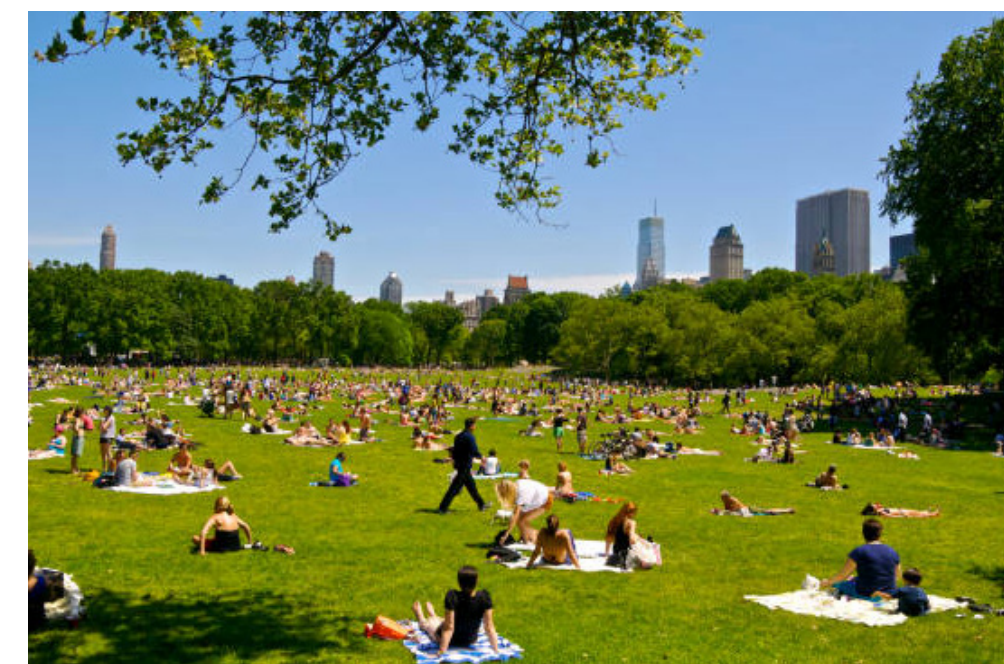
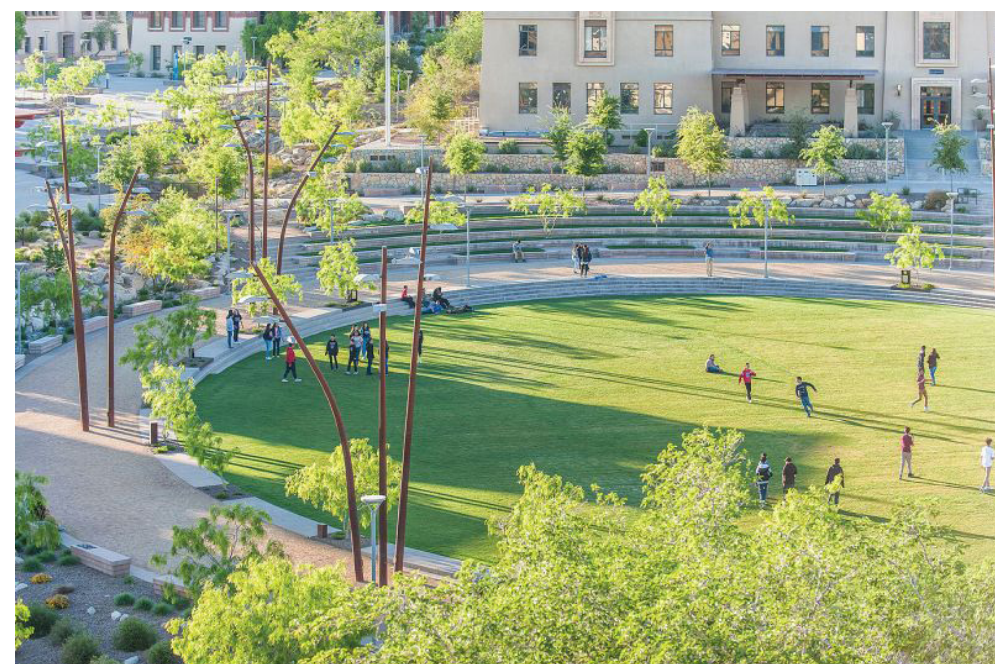
MULTI USE FIELD PLAY



PLAY STRUCTURE



GREAT LAWN



PAVILION



AMPHITHEATER



RESTROOM



GATHERING SPACES



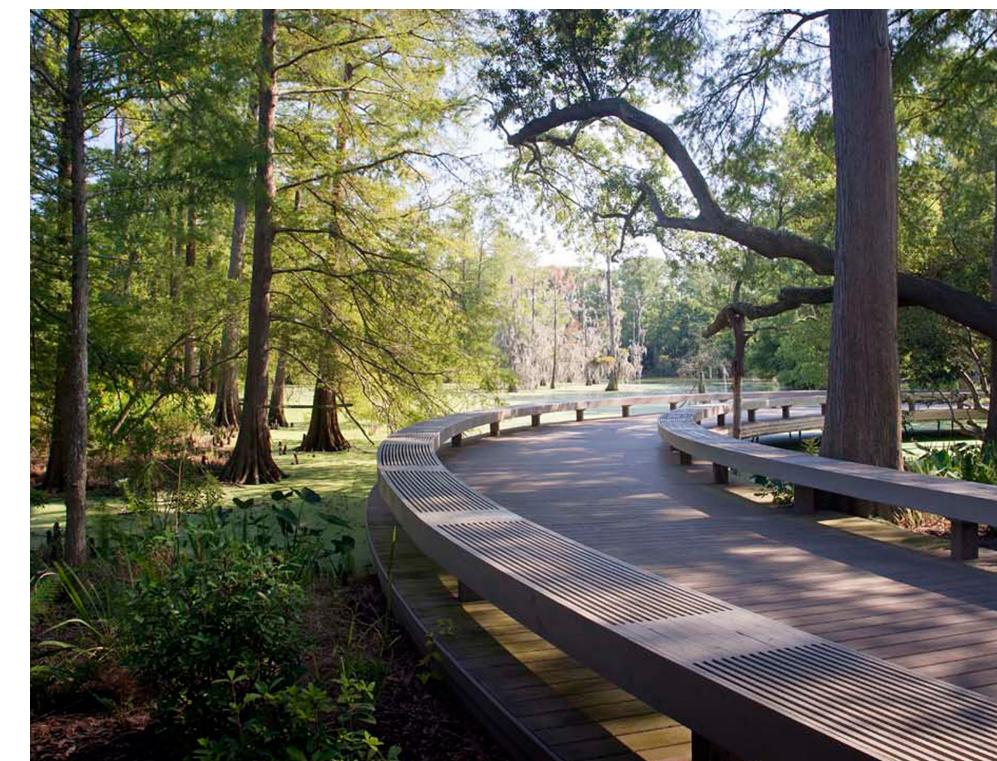
WAYFINDING



LAWN GAMES + DISC GOLF



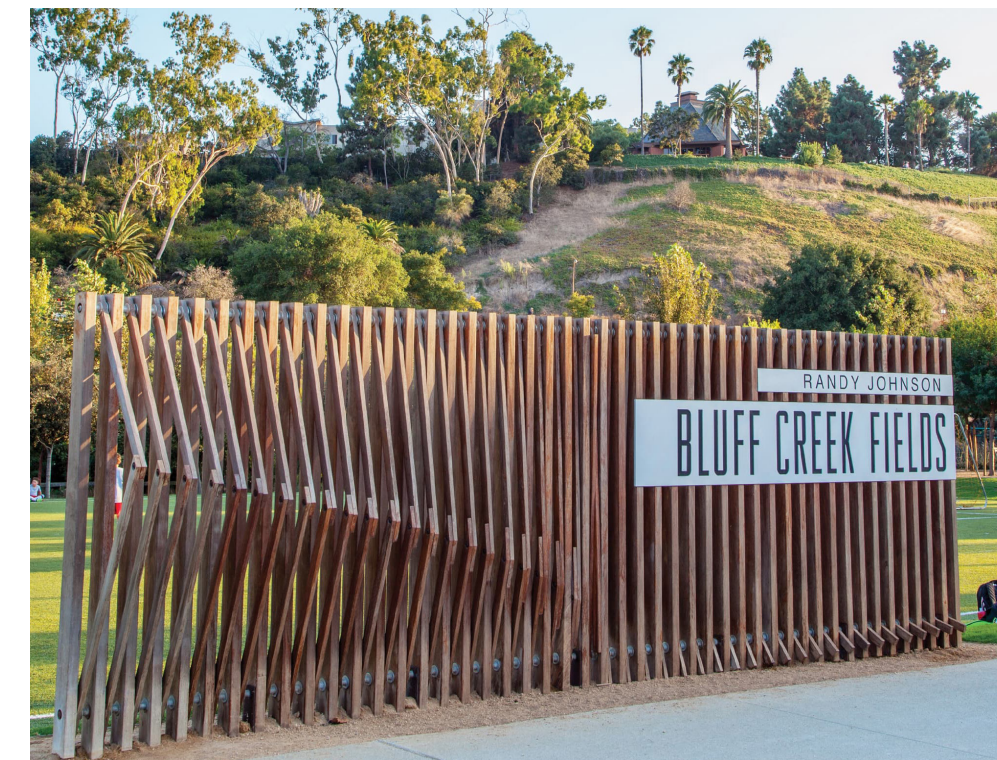
BOARDWALK



SHADE STRUCTURES



SIGNAGE



PRECEDENT IMAGERY
KINGS GATE PARK
CITY OF WILLOW PARK