



# Parker County Public Utility Agency & Water Supply Initiative

June 9, 2026

**Willow Park**

# Today's Agenda



- Drivers for Parker County Water Supply Study



- Overview of Parker County Water Supply Initiative



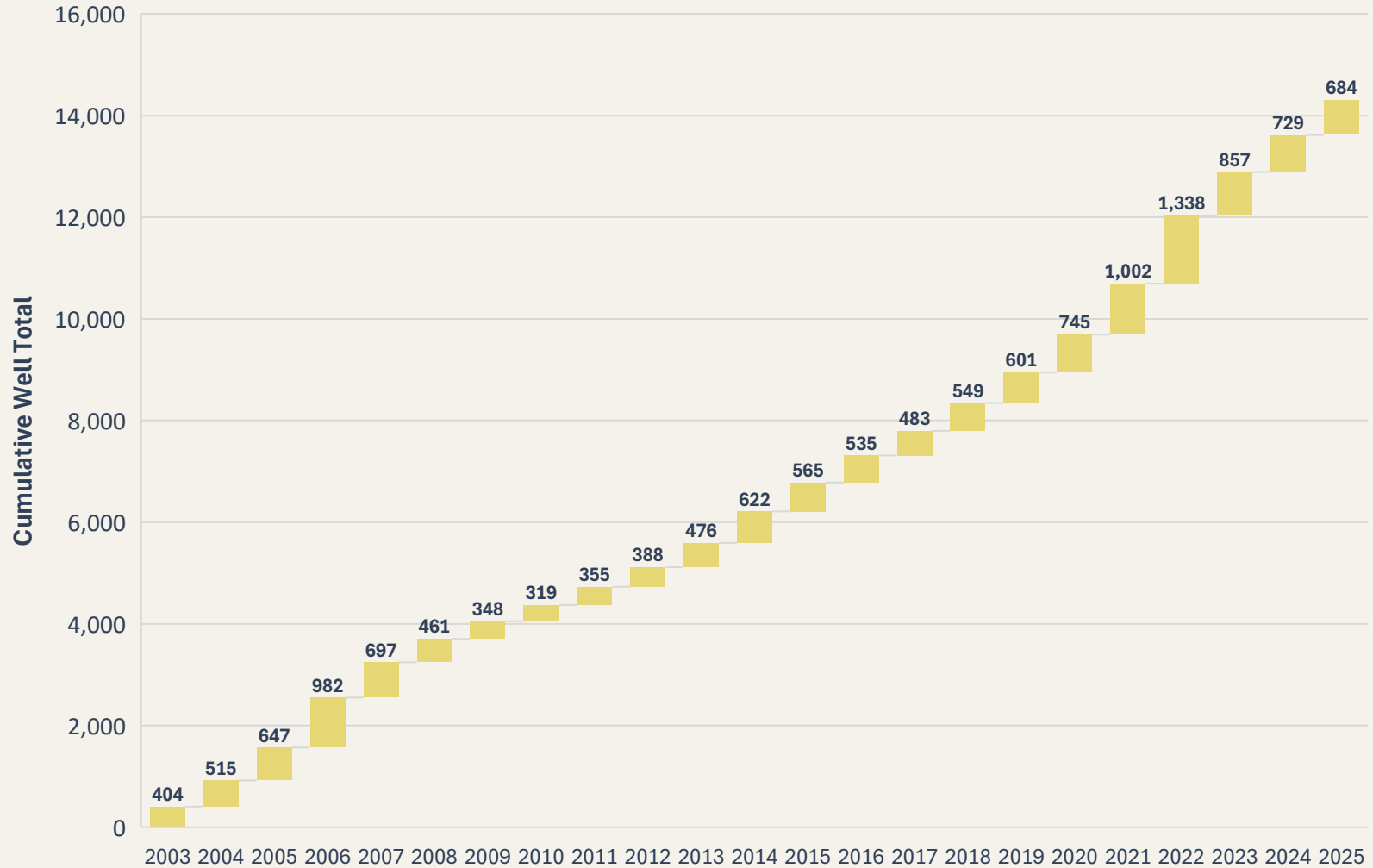
- Parker County Public Utility Agency Development



- Next Steps

# Parker County Groundwater Wells

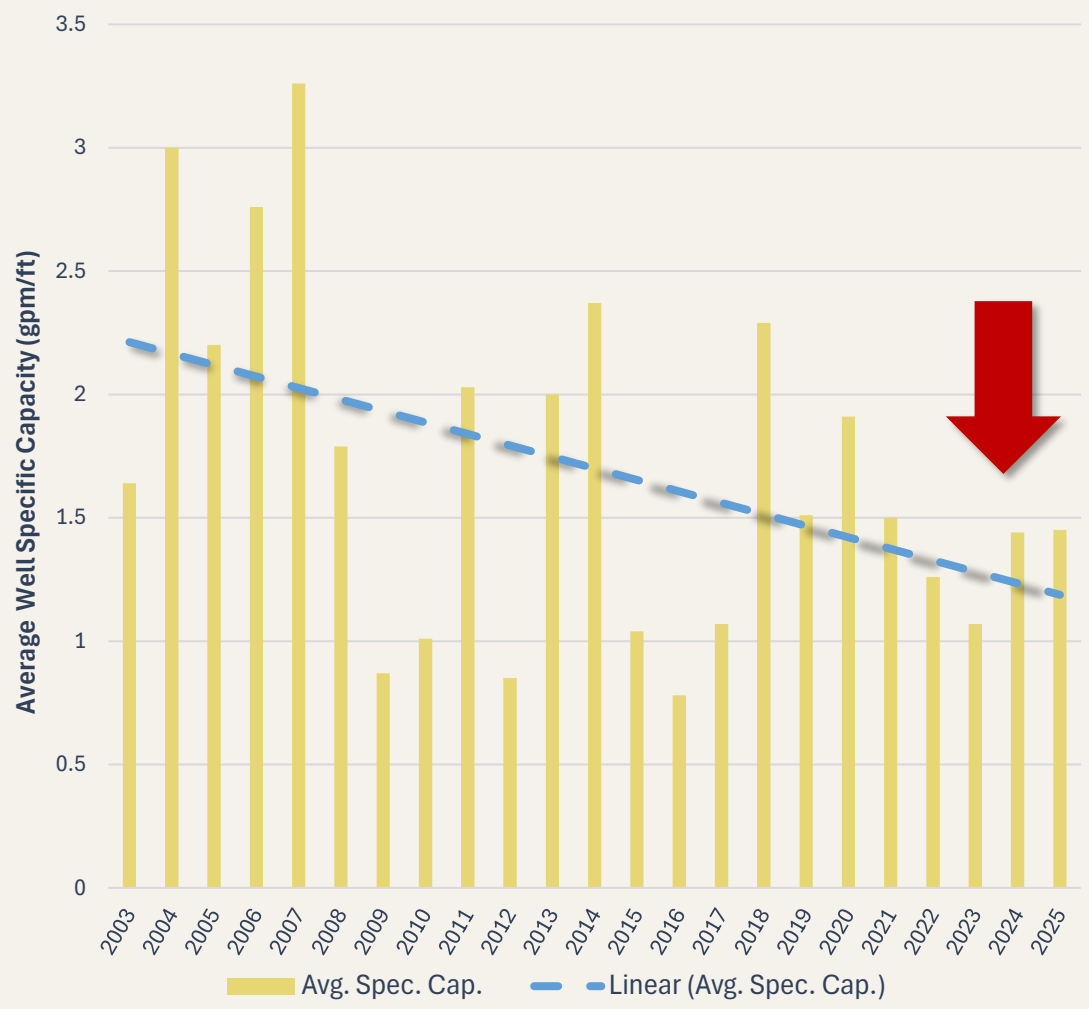
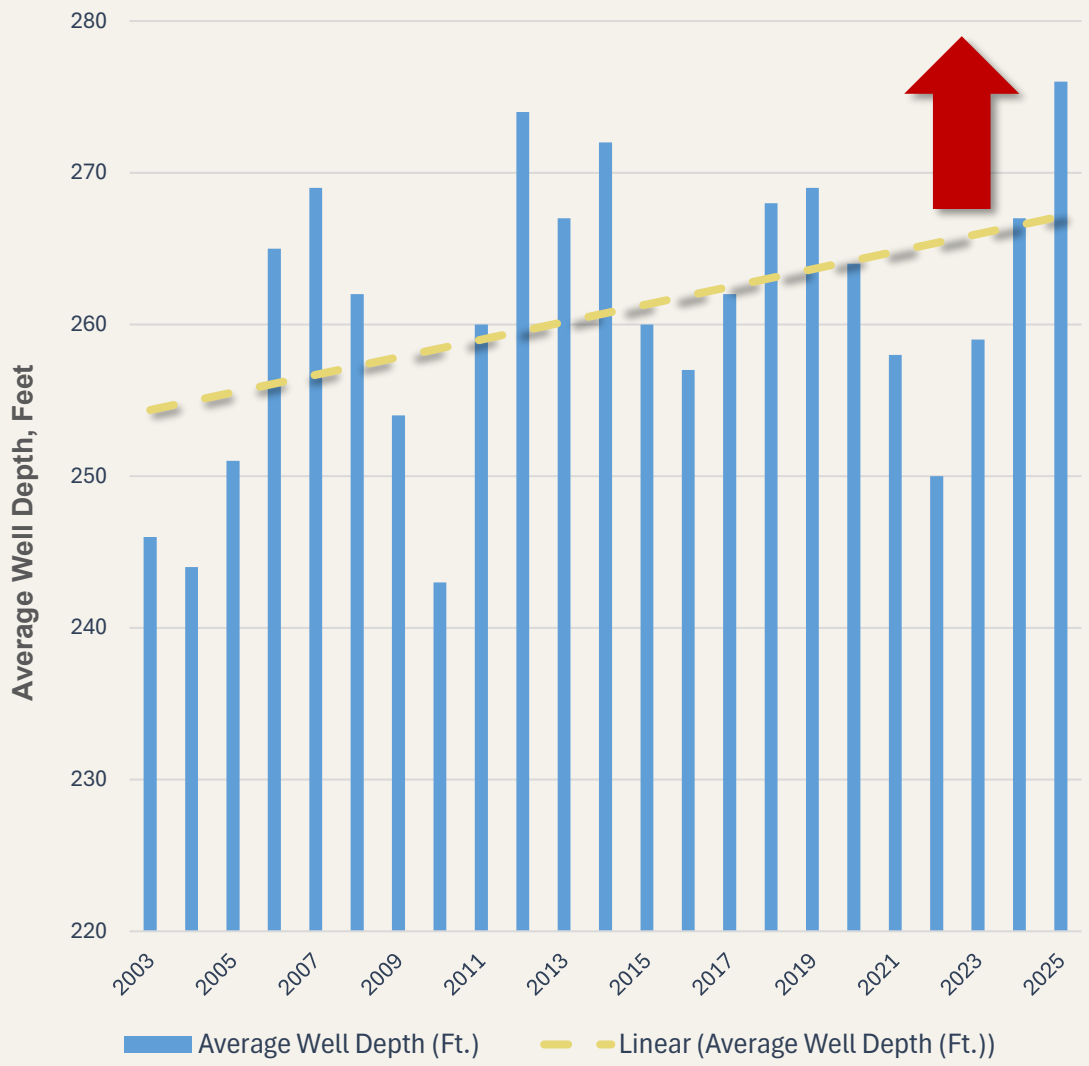
Water Wells Completed - 2003 through 2025



## Highest Number of Wells Drilled in Texas

County	Well Count (2003 - 2025)
Parker	15,488
Wise	7,578
Williamson	4,500
Bell	3,286
Montague	3,180

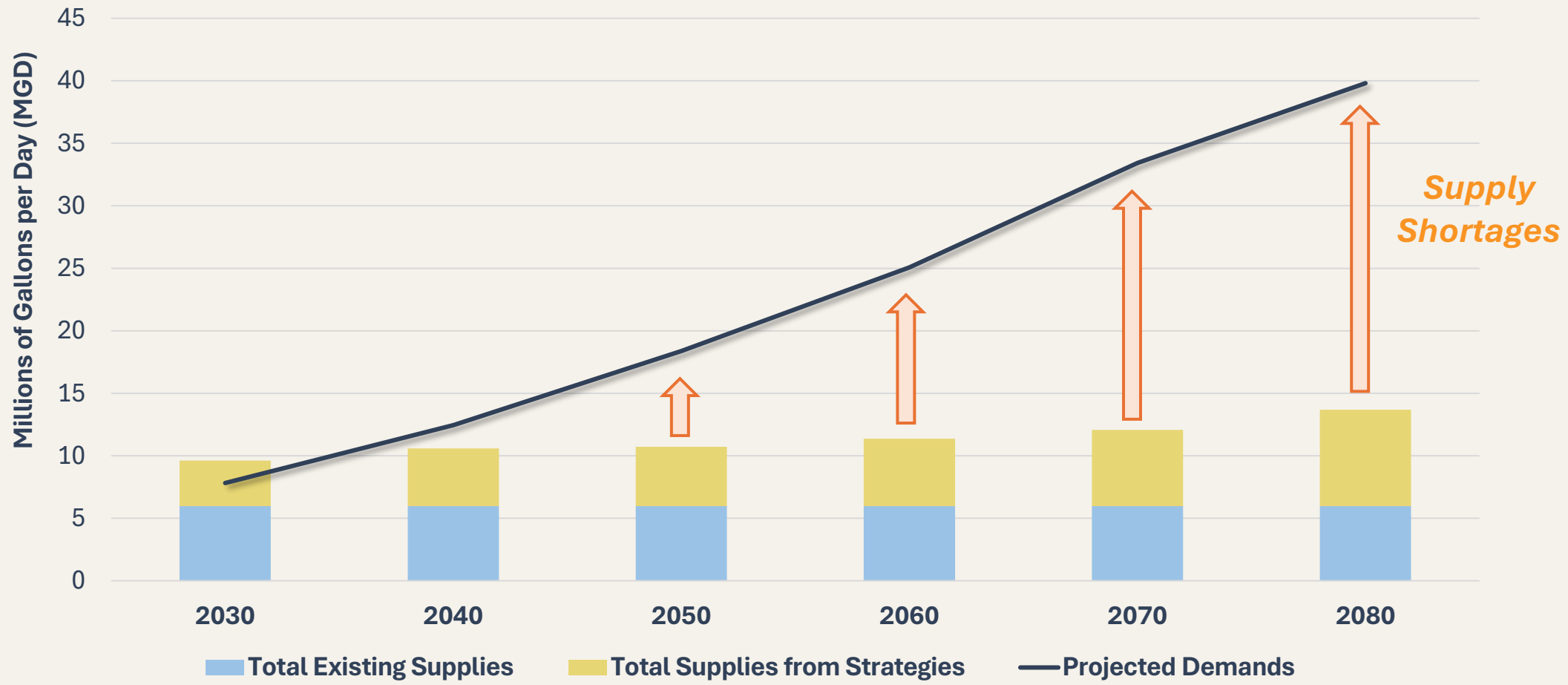
# Well Depth vs. Capacity



**Wells have to be drilled deeper...yet the capacity (yield) is decreasing.**

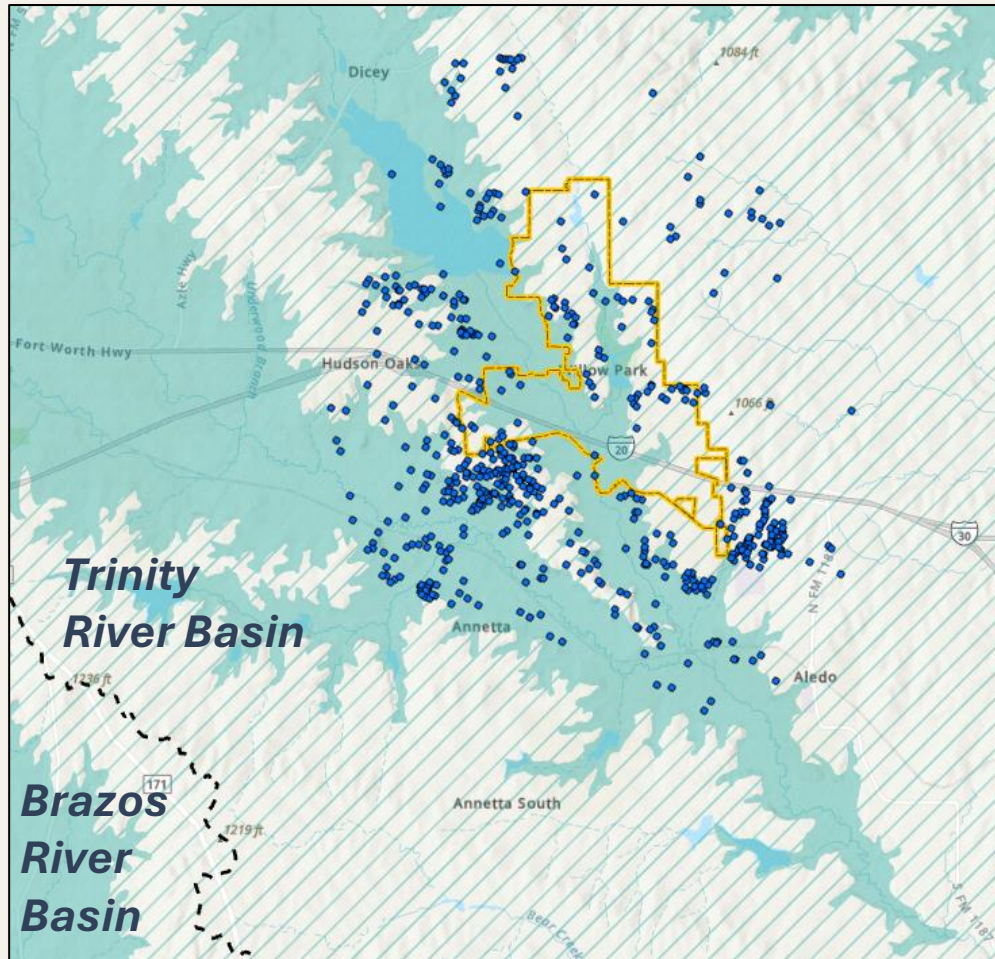
# Parker County Projected Water Supply Shortages



Parker County – Brazos & Trinity Basins



*\*Projections from Region C 2026 Regional Water Plan, which includes new groundwater supply.*

# Willow Park | Water Resources



-  *Trinity Aquifer (outcrop)*
-  *Trinity Aquifer (subcrop)*

## *Groundwater:*

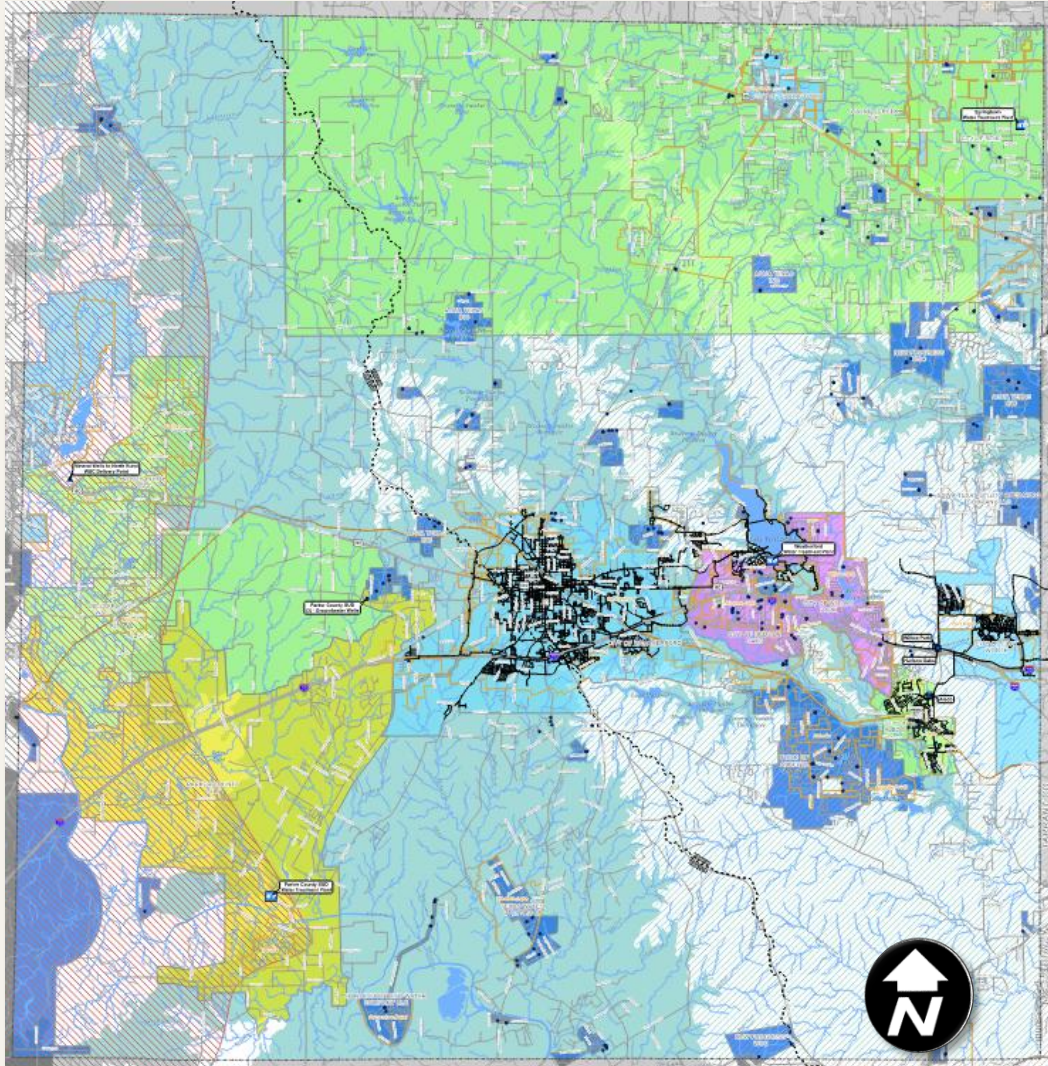
600+ domestic wells within 2 miles of City Limits:

- Average depth: 268 ft
- Average capacity: 21 gpm

## *Surface Water:*

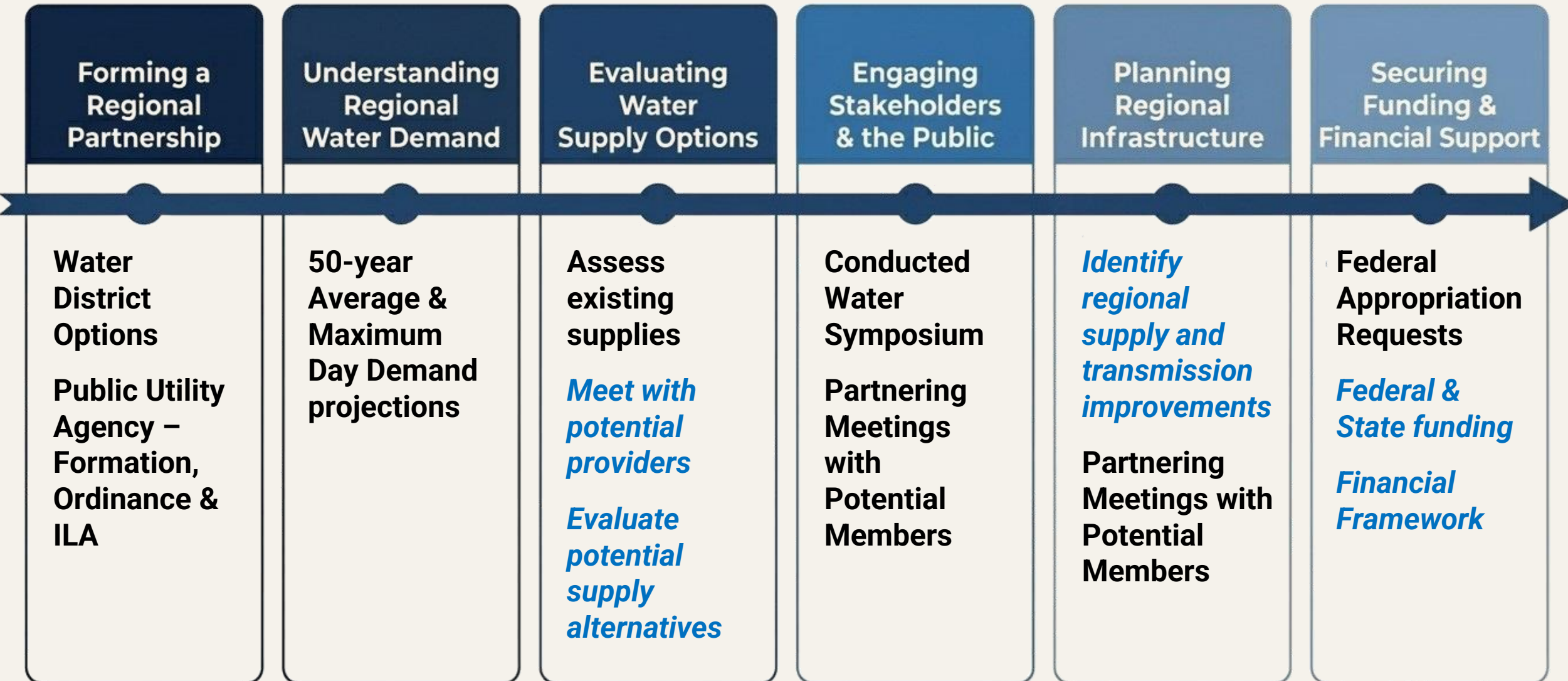
- Wholesale supply from TRWD via Fort Worth and Weatherford

# Goal of Water Supply Initiative



*Develop a solution to address **short-term** and **long-term** water needs for Parker County*

# Parker County Water Study Overview



**Legend:** Completed Efforts; *In Progress/Upcoming Efforts*

# Regional Collaboration Considerations



## Water Supply Challenges

- Groundwater Trajectory Not Sustainable
- Lack of Easy/Short-term Supply Options
- Scarcity of Water



## Cost and Funding Challenges

- Escalating Construction Costs
- Costs Prohibitive for Single Entity Solutions



## Economic Development Impacts

- Lack of Water Supply Could Limit Growth



## Barriers to Working Collaboratively

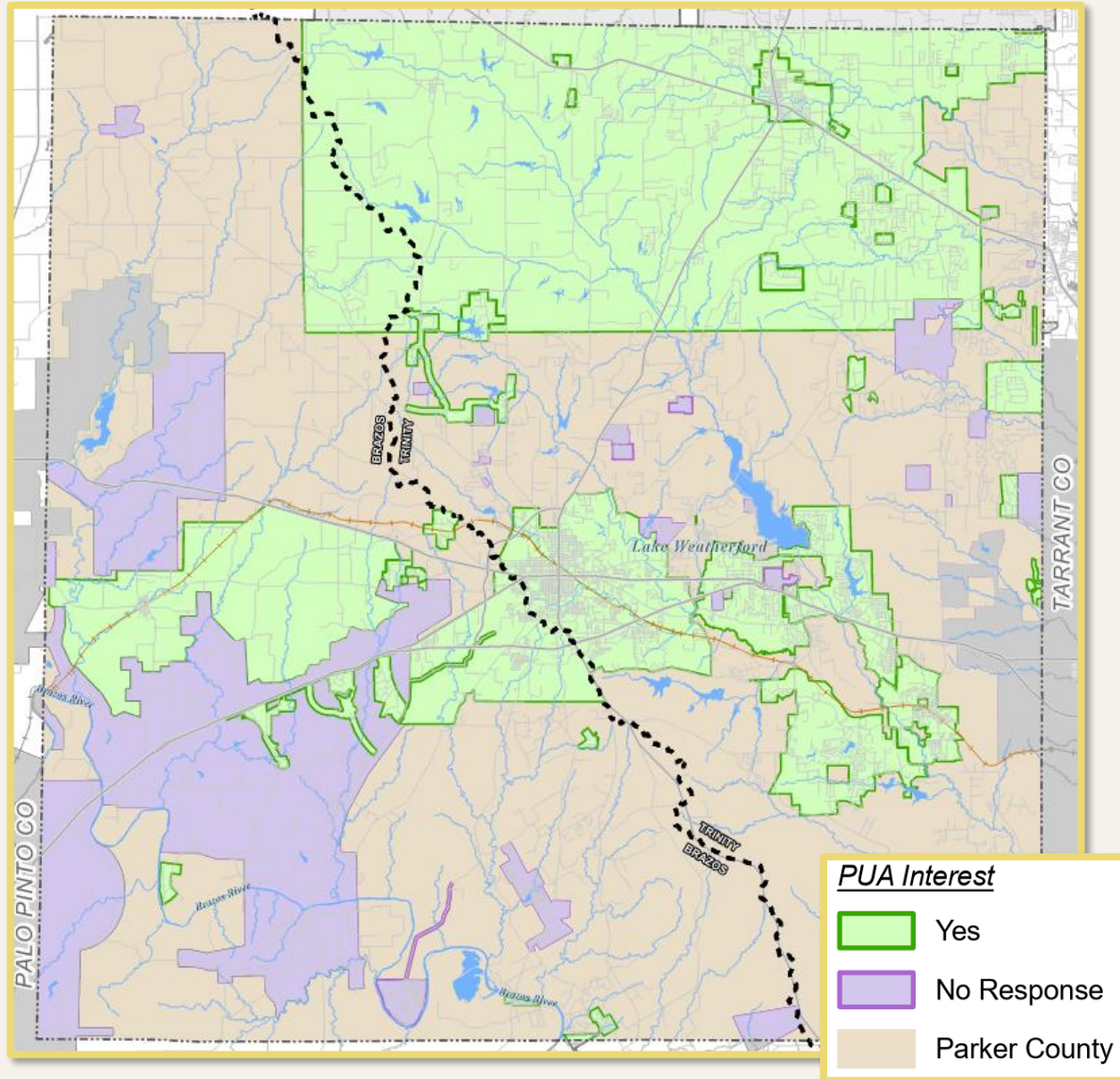
- No Existing Structure



# Regional Entity Options

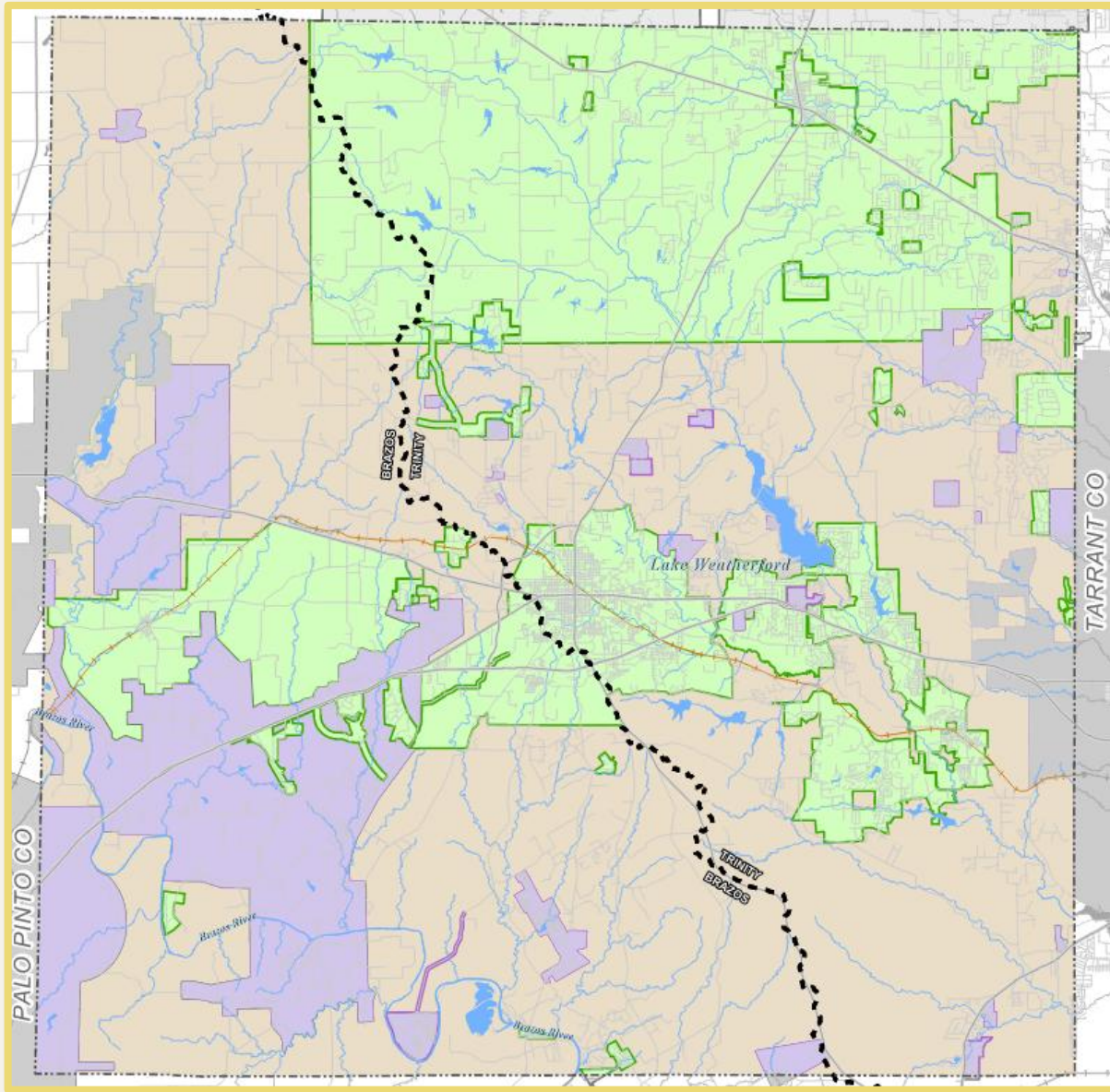
Consideration	Public Utility Agency	Water District
Creation Process	Concurrent Ordinances of Public Entities	Legislation / Local Bill
Governance	Board of Directors <i>Appointed by Participating Public Entities</i>	Determined by Legislation; however, a district with taxing authority must have elected Board members
Boundaries/ Members	Members must be public entities per statute; added by concurrent ordinances. May with withdraw as allowed by law and/or by concurrent ordinances. Boundaries of Agency follow boundaries of Members.	Determined by Legislation; however, boundaries of a district with taxing authority must follow Landowner petition process
Taxing Authority	No	Determined by Legislation
Debt Issuance	Yes; revenue debt <i>(TWDB funding eligible!)</i>	Determined by Legislation
Eminent Domain	Subject to population threshold. Currently, PUA member would need to condemn property on behalf of PUA.	Determined by Legislation
Public Bidding	Yes over \$20K <i>(with advertising requirements)</i>	Determined by Legislation

# Benefits of the PUA



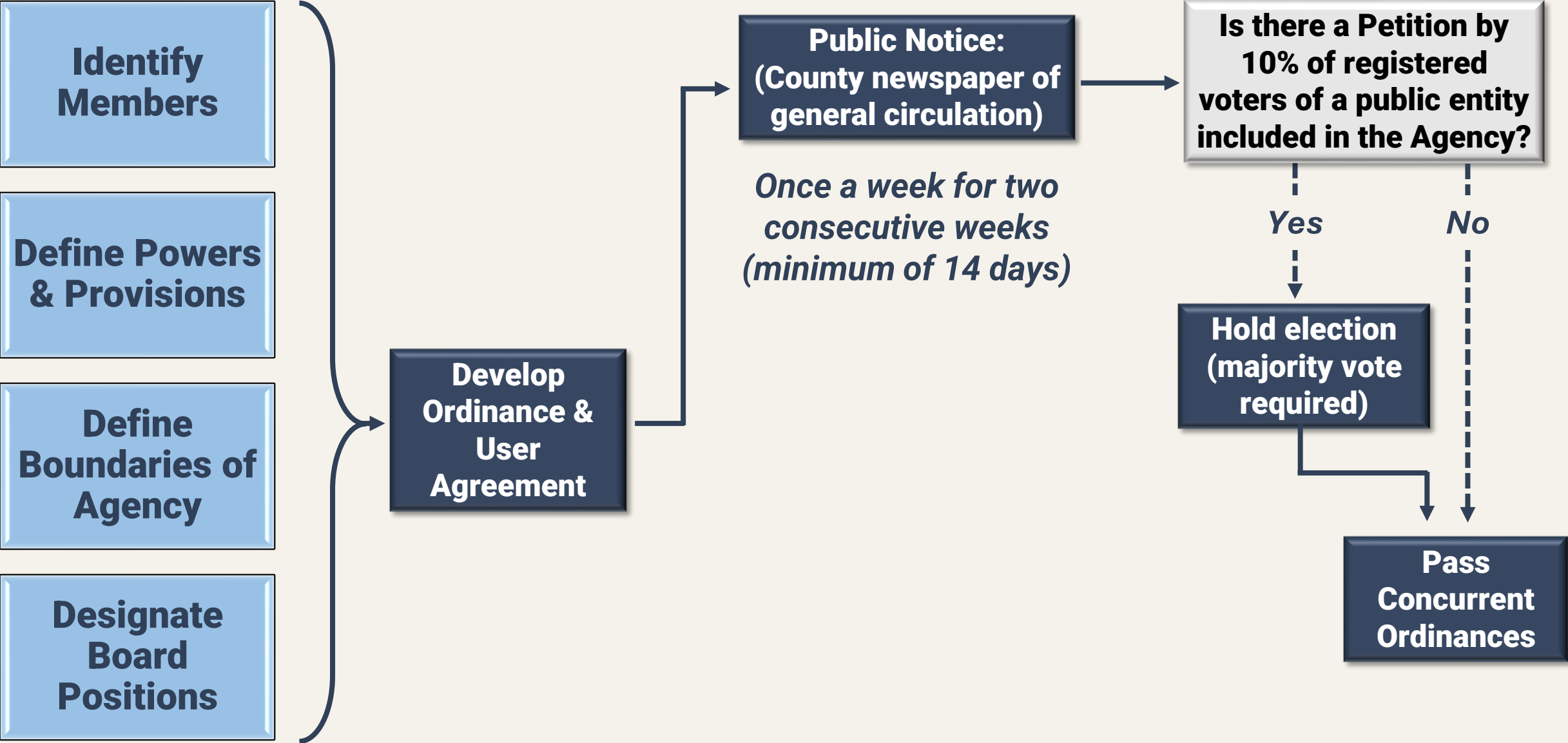
- Efficiencies and Economies of Scale
- Providing Administrative Support
- Implementing and Financing Water Supply Strategies and Increased Funding Options
- Planning for Undeveloped and Unincorporated Areas

# Potential Members



- Aledo
- Annetta
- Aqua Texas
- Brock
- Hudson Oaks
- Millsap
- Peaster
- Rio Brazos WSC
- Springtown
- Walnut Creek SUD
- Weatherford
- Willow Park
- Parker County

# PUA Formation Process



# Ordinance & User Agreement Components



## Ordinance

- Participating Entities & Boundaries/Service Area
- Board Membership, Requirements, Qualifications and Terms
- Board Positions and Procedures
- Agency Powers
- Voting
- Fiscal Year



## User Agreement

- Cost Sharing for Initial Funding
- Allowance for reimbursement
- Term of Agreement
- Fiscal Agent

# Ordinance & User Agreement Components

Ordinance		ILA/User Agreement	
Board Membership	4-year terms with no term limits; staggered terms	Term of Agreement	5- years, renewable annually after initial term
Board Qualifications	Qualified Texas voter, at least 18 years of age	Fiscal Agent	Parker County
Fiscal Year	October 1 – September 30		

# PUA Membership Rules (TLGC 572.053)

## *Before Debt Issuance:*

- Members may join or exit with proper notice

## *After Debt Issuance:*

- Members would need to transfer/pay off debt obligation and sell supply reservation to other members
- PUA water rates are shared by all members

*The PUA encourages stability and protection of investments towards long-term infrastructure*



# Cost Sharing Tiers

**Willow Park**



Qualification	Individual Annual Cost Share
Population <1k	\$5,000
Population 1k - 3k	\$10,000
Population 3k - 5k	\$15,000
Population 5k - 10k	\$20,000
Population 10k - 15k	\$25,000
Population 15k - 20k	\$30,000
Population >20k	\$50,000
UTGCD	\$25,000
County	\$100,000

# Initial Annual Cost Sharing

Entity	Annual Cost Share
Aledo	\$20,000
Annetta	\$15,000
Aqua	\$15,000
Brock	\$5,000
Hudson Oaks	\$15,000
Millsap	\$10,000
Parker County	\$100,000
Peaster	\$5,000
Rio Brazos WSC	\$5,000
Springtown	\$15,000
UTGCD	\$25,000*
Walnut Creek SUD	\$50,000
Weatherford	\$50,000
Willow Park	\$20,000
<b>Total</b>	<b>\$350,000</b>

*\*Additional in-kind services to be contributed*

# Draft Budgeting Guidelines

Expense	Potential Annual Budget
General Admin	\$125,000
Bookkeeping/Auditor	
Overhead	
Legal	
PR/Communications	\$70,000
Base-Level Engineering	\$50,000
Miscellaneous	\$55,000
<b>Total <i>without</i> GM + Admin Staff</b>	<b>\$300,000</b>
<b>Total <i>with</i> GM + Admin Staff*</b>	<b>\$500,000</b>

*\*GM + Admin Staff could provide services that would otherwise be performed by consultants.*

# PUA Phasing

## *Initial Phase*

- PUA continues to explore water supply & infrastructure options
- No infrastructure or construction costs



## *Infrastructure Phase*

- Known, planned infrastructure projects and costs
- Participation in infrastructure capacity basis of cost share

# PCPUA Formation Timeline



*14 days minimum  
required for  
advertisement*

# Why Form and Join the Parker County PUA?



Creates a formal structure for regional cooperation



Strengthens competitiveness for state and federal funding



Allows coordinated infrastructure planning



Preserves local representation while advancing shared solutions



Positions participating entities for long-term water reliability

# Questions?

Parker County Water | [pc\\_water@freese.com](mailto:pc_water@freese.com)  
<https://www.parkercountywaterplan.com>