



INTRO

REVIEW

APPROACH

AESTHETICS

COLOR

DESIGN

NEXT

CLIENT

City of Willow Park

AGENDA

Create a bathroom/
Pavilion/ storage room for
Kings Gate Park.

KINGS GATE PARK

Meet The Designers

Faith Bartlett
(Jr.)

faithbartlett@aledoisd.org

Designer/Modeler



Samuel Ghent
(Sr.)

samghent01@gmail.com

CAD
Drafter/Designer/Modeler



Amelia Buck
(Jr.)

ameliabuck@aledoisd.org

Designer/Modeler



Matthew Dominick
(Jr.)

matthewdominick@aledoisd.org

Designer/Modeler





OUR APPROACH

We aimed to create a pavilion that fits right into the park, balancing the needs and preferences of the park's guests with practical and aesthetic features. For example, our design is practical through the incorporation of ADA guidelines, while still remaining aesthetically pleasing.

DESIGN INSPIRATION

We got our inspiration from the surrounding buildings such as The Shops at Willow Park, and other photos from park bathrooms and pavilions.





COLOR

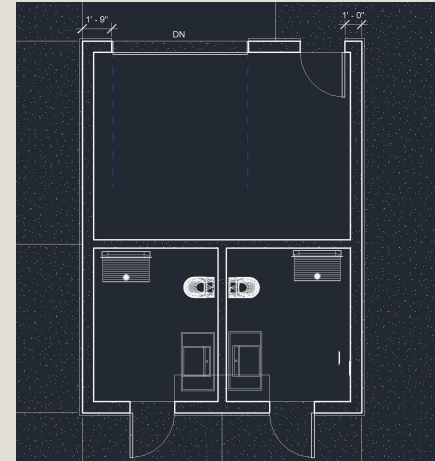
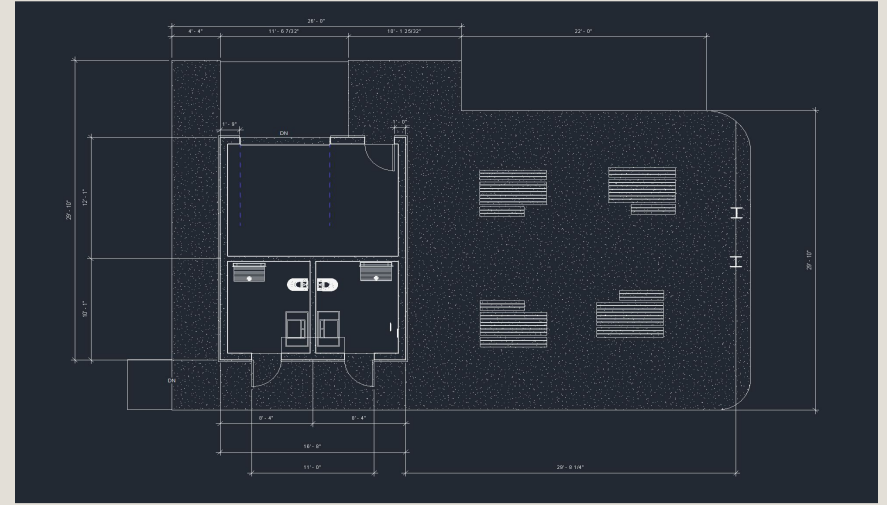
Celestial Blue - PPG1156-7

Commercial White - PPG1025-1

Gray Concrete



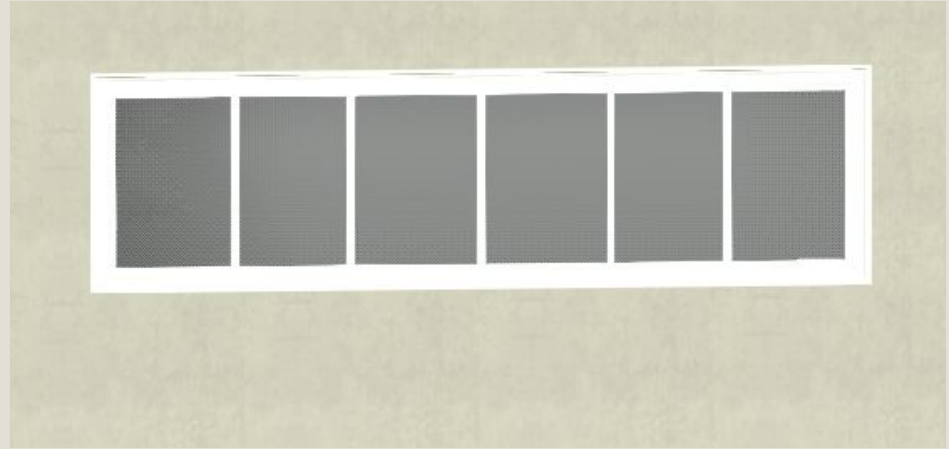
Revit Design



DESIGN ELEMENTS

1 Windows

We added frosted windows high up on the walls to let in some natural light, while keeping privacy



2 Mural

3 Pillars

DESIGN ELEMENTS

10

1 Windows

2 Mural

A mural on the pavilion side of the building would help add some personality and fun to the pavilion. AHS art students could be commissioned to paint it.



3 Pillars

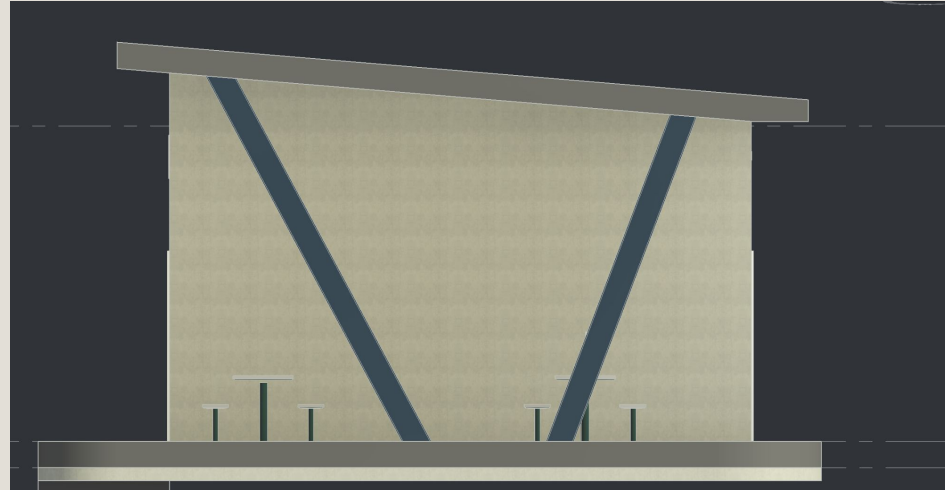
DESIGN ELEMENTS

1 Windows

2 Mural

3 Pillars

We added the slanted round pillars to add some structural support while keeping the design clean and simple.



Thank You!

Contact Info:

trogers@aledoisd.org – Aledo CTE
Coordinator

We appreciate your willingness to work with us, and have enjoyed this entire experience!