

Willow Park, Texas

October 2019

# Parks and Trails Master Plan

ADOPTED ON OCTOBER 08, 2019



PARKS



TRAILS



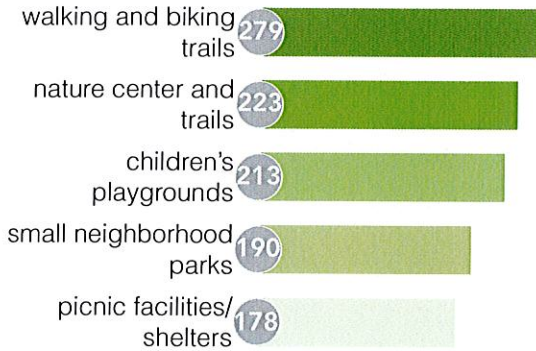
OPEN SPACE

# 02: Development

Planning Process, Goals & Objectives & Community Engagement

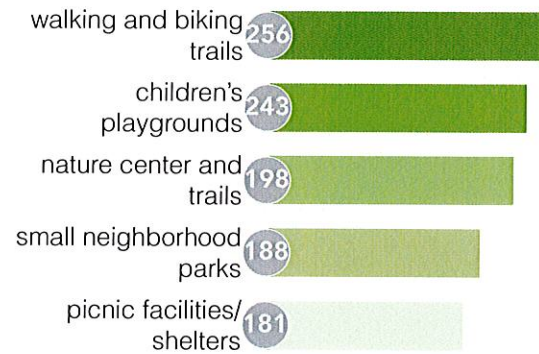


### Question 3: Check every option that would fit a need for your household.



Results:  
The top five responses selected are identified above. For additional response options and their selection rate, reference Appendix I

### Question 4: Check every option that would fit a need for the City of Willow Park



Results:  
The top five responses selected are identified above. For additional response options and their selection rate, reference Appendix 1

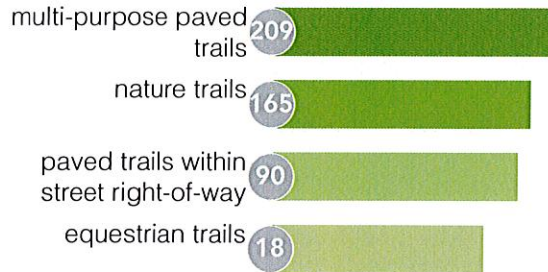


# 02: Development

Planning Process, Goals & Objectives & Community Engagement



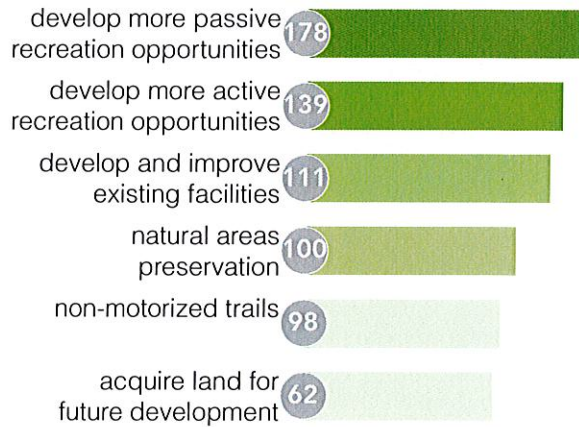
## Question 5: What trail initiatives should the City of Willow Park invest in as a priority?



### Results:

Participants were asked to select their preference from the four options listed above. Multi-purpose paved trails and nature trails received the most votes. Although listed in the 2014 Comprehensive plan multiple times, equestrian trails only received one vote

## Question 6: Which initiatives should the City of Willow Park prioritize for future implementation?



### Results:

Facilities for passive (walking trails, picnic areas, etc.) and active (sports fields, playground, etc.) received the most votes.



# 03: Standards



## Assessment Styles & Park Types

### Size Criteria (NRPA)

- Demographic profiles and population density primary indicators
- 5 acres minimum, 7-10 acres optimal

### Community Park

Purpose: These park types serve a broader spectrum than neighborhood parks. A community park focuses on community based recreation and needs. Typically these parks provide the biggest impact of services for the parks and trails system.

### Location Criteria (NRPA):

- Serve two or more neighborhoods
- 1/2 to 3 mile typical service radius
- Served by arterial or collector streets, trail system networks should connect to them (if possible)
- Geographically centered, per community layout
- If public access is available, recreation and open space opportunities provided by nearby schools should be considered

### Size Criteria (NRPA):

- Demographic profiles, population density, resource availability and recreation demand within the park service area, are primary determinants
- Based on accommodating desired recreation uses as needed
- Benchmark in the region is 5-20 acres minimum, but can be 20-50 acres

### Park Trails

Purpose: Park trails are multipurpose located within parks, greenways and natural areas. They are most desirable because they allow for mostly uninterrupted pedestrian movement and act as a protection from vehicular traffic and urban development.

### Development Parameters (NRPA)

- Trail design should match standards developed by TXDOT and AASHTO (American Association of State and Highways Transportation Organization), if applicable
- Development policies (approved by city council), requiring developers to incorporate trails and greenways into their development.

### Types of Trails (NRPA)

- Type I: Patterns dictate separate paths for pedestrians and bicyclists (along river front)
- Type II: Lighter use patterns (housing subdivision to natural area)
- Type III: Minimum impact (nature preserve)



City of Willow Park

# 03: Standards

## Assessment Styles & Park Types



### Connector Trails

Purpose: The primary difference between park trails and connector trails are their location. While park trails are located in the natural environment, connector trails are located within right-of-ways, utility easements or artificial drainage ways.

#### Development Parameters (NRPA)

- Establish trail right-of-way and easements early in community development
- Establish design standards for trail development. Trail design should match TXDOT and AASHTO, if applicable

#### Types of Trails (NRPA)

- Type I: Patterns dictate separate paths for pedestrians and bicyclists
- Type II: Lighter use patterns (link between parkway and nearby housing)

### Facilities and Features

Recreational opportunities can be flexible and informal or programmed active recreation facilities, and may include the following:

#### Active Recreation Examples:

- Informal Ball Fields (open play and practice)
- Game Courts
- Splash Pad
- Aquatics Center
- Dog Park
- Walking/Jogging Trails
- Skate Park, or other trending recreation uses

#### Passive Recreation Examples:

- General Open Space
- Group Picnic Pavilion or Tables
- Natural Areas for Interpretation or Study
- Community Garden



City of Willow Park

October 2019 - Parks and Trails Master Plan

# 04: Assessment

## Inventory, Assessment of Needs & Indications



### Trails Inventory

Currently no formal trail system or linkages exist in Willow Park. However, future trail connections to adjacent cities and regional trail planning efforts are feasible. The image to the right shows the 2045 Veloweb routes including linkages to Weatherford. Willow Park has an opportunity to connect into this system by way of the proposed trail system for the City of Aledo. (Reference City of Aledo Future Land Use Plan and 2045 Regional Veloweb Graphics)

#### Existing Amenities:

- Walking path loop at Pfc. Paul Balint Jr. Memorial Park (.2 miles) as seen on the park inventory page.



2045 Regional Veloweb

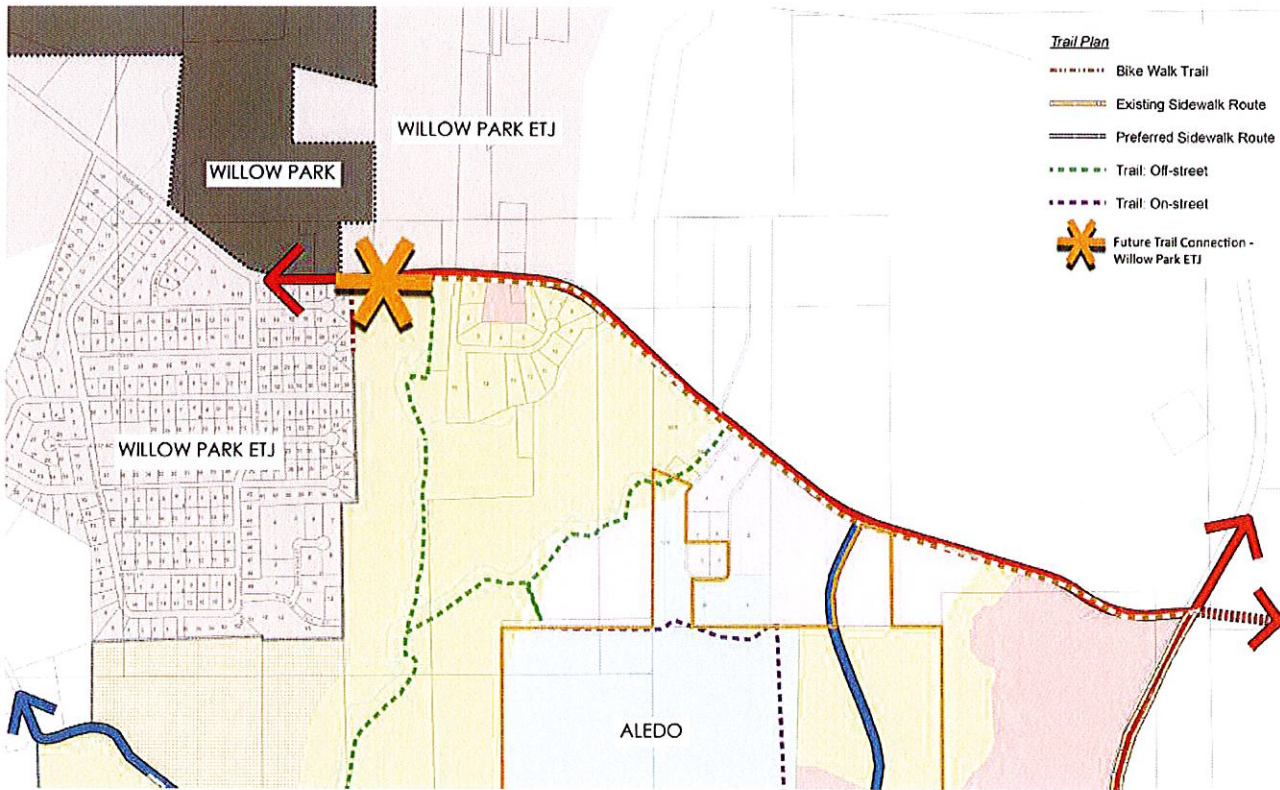


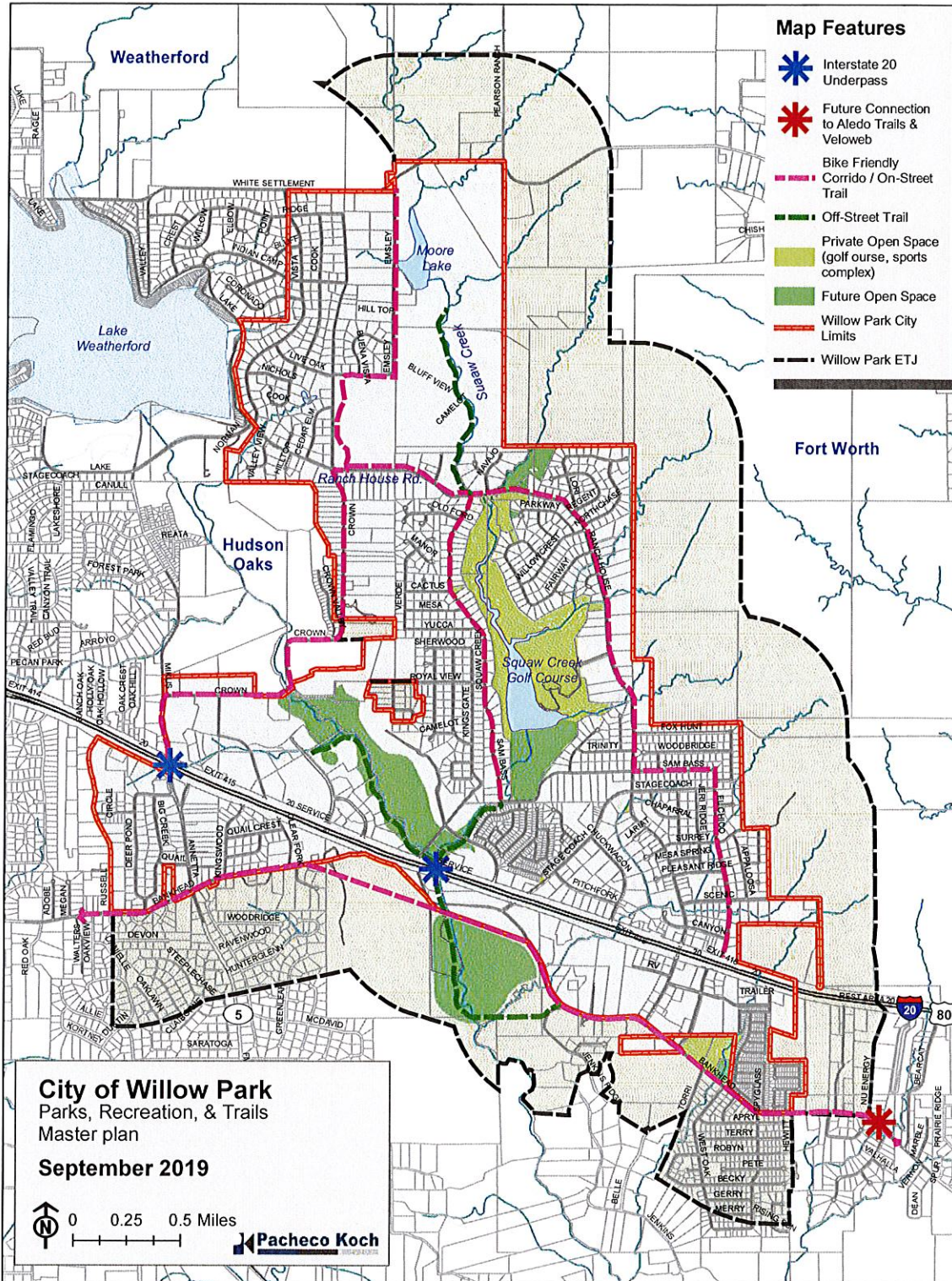
Image Adapted from Aledo Future Land Use Plan

City of Willow Park

Parks and Trails Master Plan - October 2019

# 04: Assessment

Inventory, Assessment of Needs & Indications



City of Willow Park

October 2019 - Parks and Trails Master Plan

# 05: Recommendations



## Priorities & Recommendations

### Priorities

In an effort to identify priorities for recreational facilities, Willow Park received public input through data acquisition, including: a needs base analysis, surveys, public and steering committee meetings and city staff feedback.

The top seven (7) priorities identified by citizens and staff are ranked highest to lowest according to favorability:

#### Top Priorities

- 1 - Playgrounds
- 2 - Walk/Bike Trails
- 3 - Nature Area
- 4 - Picnic Facilities
- 5 - Basketball Courts
- 6 - Sand Volleyball Courts
- 7 - Splash Pad

Figure 4.0 List of Priorities from Survey



The priorities outlined are further described in this chapter according to degrees of development and overall benefits. Levels are dependent on an array of factors including needs base analysis, demographics and funding.

### Recommendations

- The phrase 'Bigger and Better' does not equate to higher use or satisfaction.
- Details should be finalized in the design phase and should not consume the park planning phase.



### Playground

#### Degrees of Development

- Traditional vs. Customized
- Single vs. Multiple Components

#### Benefits

- Community Gathering Space
- Inclusive (Accessible)
- Free and Fun Activity

City of Willow Park



# 05: Recommendations



## Priorities & Recommendations

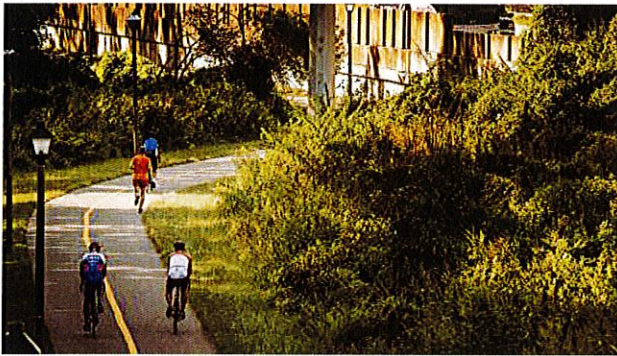
### Walk/Bike Trails

#### Degrees of Development

- Hard vs. Soft Trail
- Accessible vs. Non-accessible

#### Benefits

- Preserves and promotes open space
- Outdoor Recreation
- Free Activity



### Nature Areas

#### Degrees of Development

- Traditional vs. Customized
- Single vs. Multiple Components

#### Benefits

- Biodiversity and Air Filtration
- Education: Encourages Observation and Exploration
- Recreational Activities



City of Willow Park

Parks and Trails Master Plan - October 2019

# 06: Implementation



## Funding & Next Steps

This section provides direction for implementation strategies. Further development of these strategies are required by City Council and the proposed Park Board to outline and finalize goals presented in this master plan.

### Next Steps

#### Park Board

The park board's primary purpose is to implement, preserve and advocate for the Parks and Trails Master plan to benefit both the municipality's community and natural environment alike. It is recommended Willow Park appoint 5 park board members to evaluate opportunities and make recommendations to city council.

#### Design: Park and Trail Master Plan

An overall, Park and Trail Master Plan design document has the potential to initiate advocacy with community members, stakeholders and city officials. It is recommended Willow Park hire an outside consultant to develop a design concept that adheres to this written, master plan document, engages additional community input and provides a vision for future implementation and funding.

#### Land Acquisition

Land Acquisition is a vital component in implementing the goals, objective and vision identified in this document. It is recommended Willow Park establish land acquisition objectives to encourage growth of the city's park and trails system as it applies to existing and future demographics and funding.

#### Park and Trail Development

Once initial implementation efforts have been executed, the city can initiate the final design and construction process. It is recommended Willow Park hire an outside consultant to develop a schematic plan through final construction documents. The consultant would be responsible

#### Park Maintenance and Operations Plan

The parks maintenance plan is intended to be a guide for staff and volunteers concerning the day to day operations of the parks department. Areas to address include but are not limited to horticulture, urban forestry, parks/greenways/athletics and construction/development. It is recommended Willow Park hire an outside consultant to develop this manual.

### Time frame

**1-2 YEARS**

1. Park Board
2. Overall Park and Trail Design Master Plan
3. Land Acquisition
4. Stand Alone - Priority Implementation
5. Trail Development
6. Annual Report

**2-5 YEARS**

1. Park Maintenance Plan
2. Park and Trail Development

# 06: Implementation

## Funding & Next Steps



Further development of the implementation strategies are required by City Council and the proposed park board to finalize goals presented in this master plan. Elected officials and city staff are encouraged to identify whether top priorities should be stand alone projects or a larger combined, project vision. Final decisions are guided by the city's need, budget and funding efforts.

With residential or commercial development on the rise, park and trail development serve as an important amenity for developers. If applicable, proposed facilities should be accessible to all citizens, (if city funds are utilized), regardless of final ownership (private or public).

Lack of connection and access discourages use of recreational facilities. Connectivity via existing roads, sidewalk and proposed trails, should help guide the location and/or placement of future facilities.



### Willow Park Parks & Trails Master Plan Next Steps:

A. Identify and ID Top Priorities for Recreation Amenities/Facilities	Partner with appropriate agencies to identify if priorities should be stand alone projects or combined into a park site plan.
B. Set A Probable Opinion of Cost	Perform needs and assessment study to determine square footage and parking needed to accommodate recreation amenities/facilities. Determine pricing per item and projected design and construction costs.
C. Identify Possible Site Locations	Inventory and determine what areas are viable to reuse/use and complement the recreational functions of the project.
D. Funding	Look for opportunities to partner with private developers, apply for grant funding and utilize existing facility and land opportunities for parks and trails development.

City of Willow Park