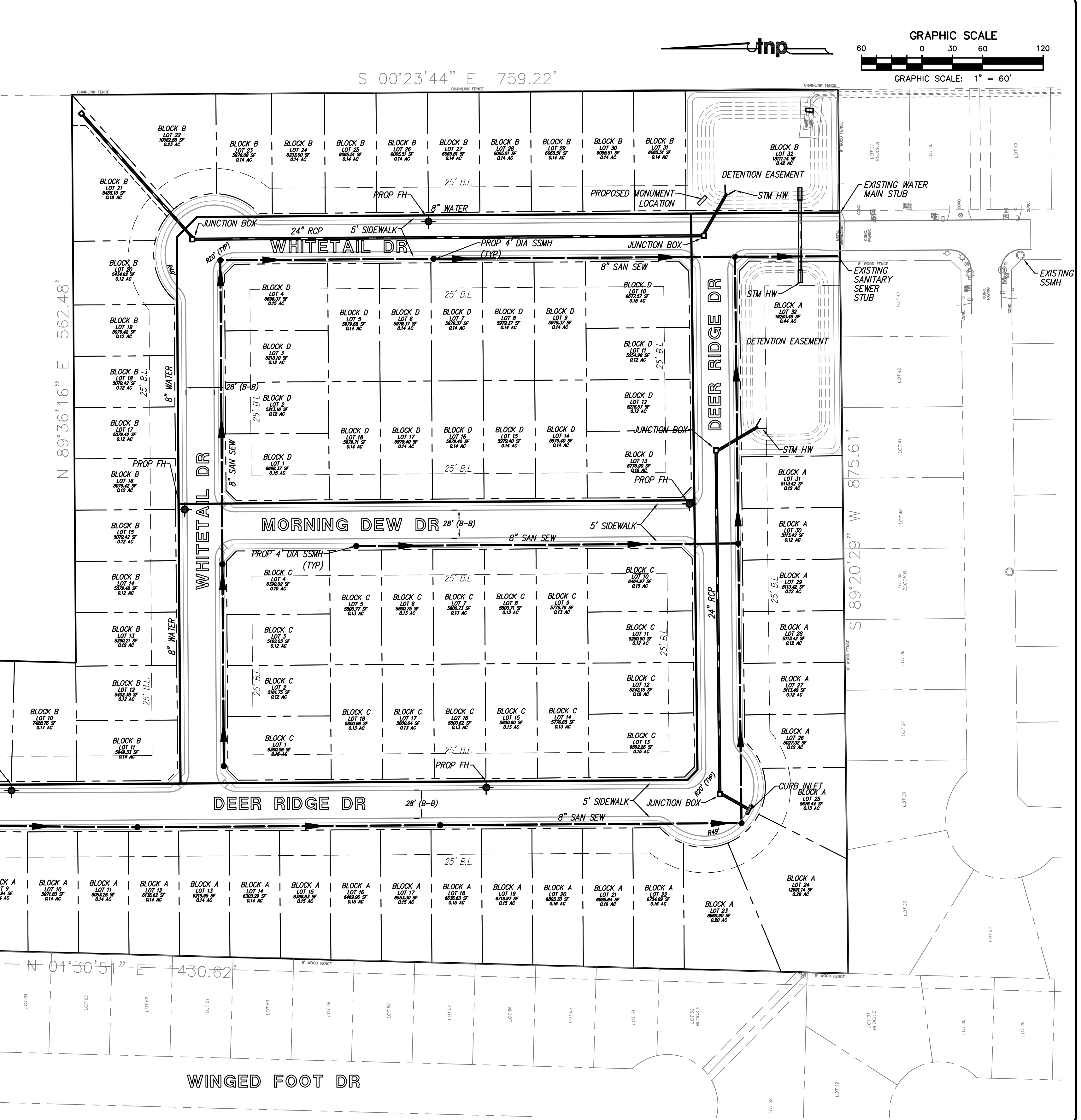


TYPICAL ROW SECTION

UTILITY NOTE
 THE EXISTING UTILITIES SHOWN ON THE PLANS WERE COMPILED FROM VARIOUS SOURCES AND ARE INTENDED TO SHOW THE GENERAL EXISTENCE AND LOCATION OF UTILITIES IN THE AREA OF CONSTRUCTION. THE ENGINEER ASSUMES NO RESPONSIBILITY FOR THE ACCURACY OF THE INFORMATION SHOWN ON THE PLANS. THE CONTRACTOR SHALL VERIFY THE EXACT LOCATION OF ALL PRIOR TO CONSTRUCTION. THE CONTRACTOR SHALL CONTACT UTILITY COMPANIES 48 HOURS IN ADVANCE OF ANY CONSTRUCTION ACTIVITIES IN ORDER TO DETERMINE IF THERE IS ANY CONFLICT WITH THE PROPOSED FACILITIES. THE CONTRACTOR SHALL NOTIFY THE ENGINEER IMMEDIATELY WHEN CONFLICTS WITH EXISTING UTILITIES ARE DISCOVERED.

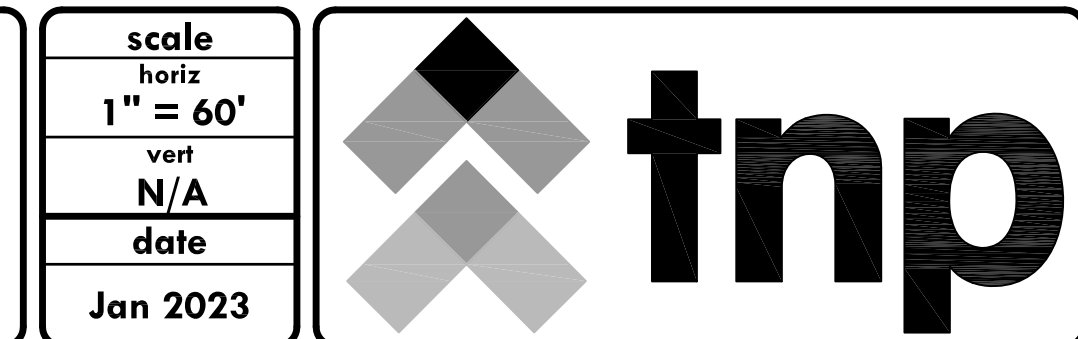


Drawing: T:\Projects\RRD22419\City\Plan\Utility\Plan.dwg, dt: Jan 27, 2023, 11:41am, by: antbilbitz
 Layout: 3, CONCEPT CONSTRUCTION PLAN, Area: AREF-BORDEP.dwg, XSD-BASE.dwg, XSD-GRADING.dwg, XSD-SD.dwg, XREF-TNRS.DWG

no.	revision	by	date

teague nall and perkins, inc
 3200 S. Interstate 35E, Suite 1129
 Denton, Texas 76210
 940.383.4177 ph
 www.tnppinc.com
 TBPE: F-230; TBPLS: 10011600, 10011601, 10194381

scale
 horiz
1" = 60'
 vert
 N/A
 date
Jan 2023



This document is for interim review and is not intended for construction, bidding or permit purposes.
ANTHONY MILBITZ, P.E. Date: January 27, 2023
 Tx. Reg. # 142911

City of Willow Park, Texas
 Improvements for
Country Hollow
CONCEPT CONSTRUCTION PLAN

tnp project
RRD22419
 sheet
3