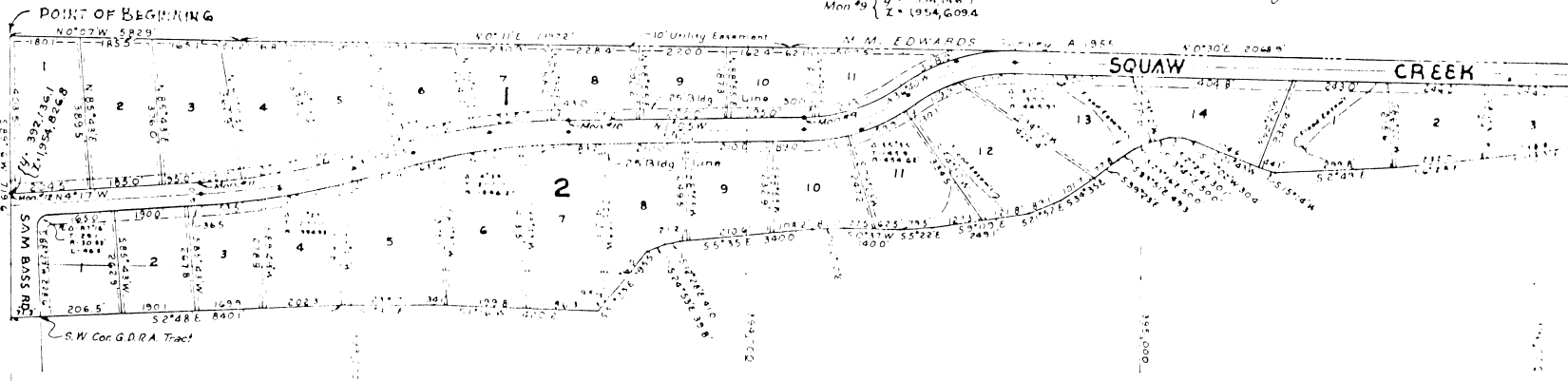
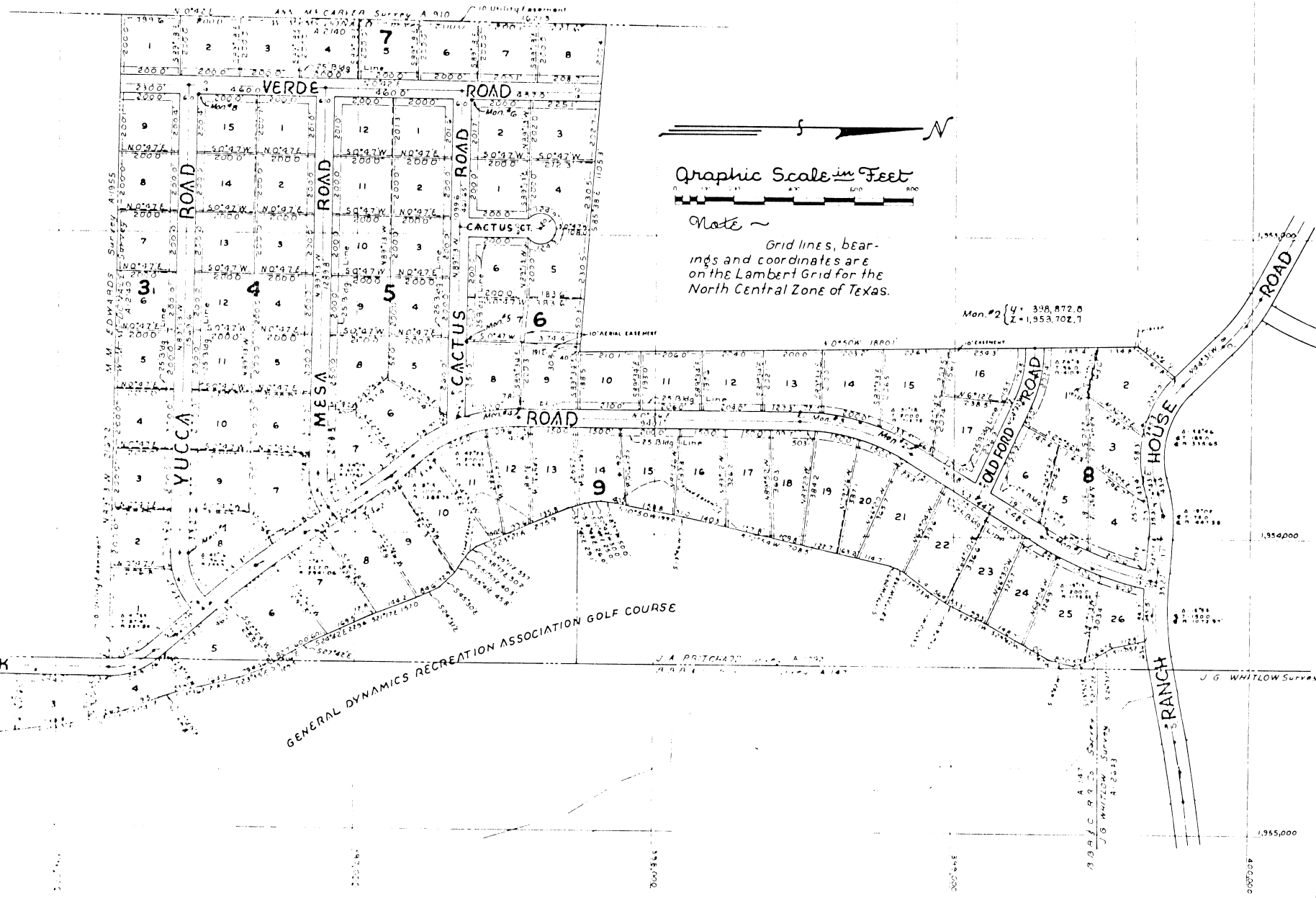


BLOCKS 1 thru 9 SQUAW CREEK ESTATES WEST

Out of the B.B.B. & C.R.R. Co. Sur., Abst. No. 147, the W.M. McDonald Sur., Abst. No. 2140 and the J.A. Pritchard Sur., Abst. No. 1092
WILLOW PARK - PARKER COUNTY TEXAS

BROWN and DAVIES Engineers FORT WORTH TEXAS
Surveyed: Summer & Fall, 1970

Approved
CITY COUNCIL
CITY of WILLOW PARK TEXAS
By: A.V. Rice
MAYOR
DATE: Dec 17, 1970



JOHN EDWARDS SURVEY A 1971