

FLASHVOTE

Public surveys

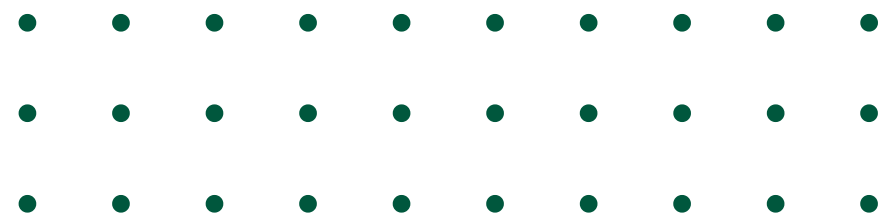


Willow Park
TEXAS



WHY SURVEYS?

In addition to helping the city meet requirements for certain grant funding, public surveys allow city leadership to make DATA-DRIVEN DECISIONS based on scientifically sound public sampling.



WHY FLASHVOTE?

Flashvote works with many local cities, including Bedford and Granbury, and their teams praise both their experience and the results. Flashvote is also more cost-effective than some other methods of collecting reliable public sampling.

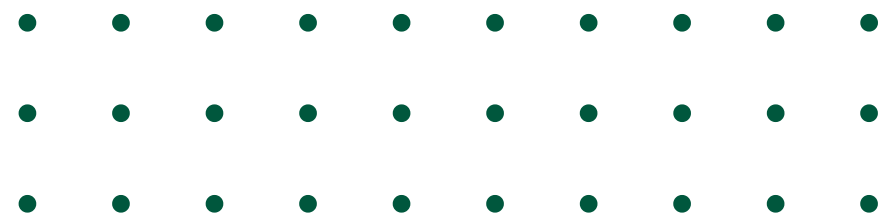




01. SHORT, AUTOMATED SCIENTIFIC
COMMUNITY SURVEYS

02. DO MORE WITH LESS AND
PREVENT MISTAKES

03. SERVE THE MANY, NOT JUST THE NOISY



FlashVote handles all steps, start to finish

Decide What You Want To Know

- Choose from completed and stock surveys

The screenshot shows a web interface for selecting survey types. At the top, there are tabs for 'Prioritize', 'Select Surveys', 'Schedule Surveys', and 'Summary'. Below this is a heading 'Which feedback would you like to have?' with a sub-note: 'Choose the types of feedback you would like. Don't worry, you can always make changes later.' The interface is divided into several sections, each with a radio button and a list of survey topics:

- General Interest (4)**: All interested services for feedback
- Very interested (15)**: Citizen Suggestions (Deselect all) with options: Easy Savings, Urgent Fixes, Simple Improvements.
- Interested (11)**: Important Things To Do, Questions People Have, Public Priorities.
- Slightly interested (1)**: Citizen Satisfaction (Deselect all) with option: Overall Government - Satisfaction.
- Not interested (3)**: Relative Local, State and National Government - Satisfaction.
- All interested (11)**: Communications/Public Information (Deselect all) with options: Communications/Public Information - Preferences, Outbound Communications - Satisfaction, Citizen Engagement - Satisfaction, Citizen Engagement - Methods, Custom survey.
- Custom Topics (Deselect all)**: Custom survey for Custom Topics #1, Custom survey for Custom Topics #2.

We Can Invite Residents For You

- We can send SMS, email or mail and provide content for other offline or online promotion



You're invited!

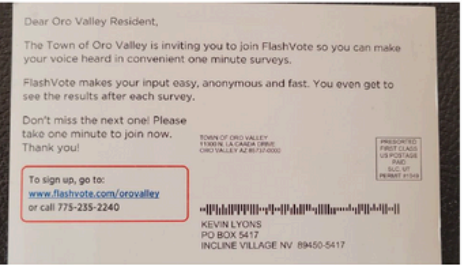
Placer County invites you to join its new FlashVote community. It's free, fast and fun!

If takes less than 1 minute to sign up. Civic participation has never been easier and we'd love your help.

Why join? Imagine you could give us your input on issues in seconds, from any device, anytime.

Then results from the community are shared within days. And FlashVote protects your data and privacy as an independent intermediary between you and Placer County.

[Accept invitation](#)



Get Custom Surveys On Demand

- Custom survey drafts/edits ready in 24-48 hours

The screenshot shows a 'Survey' creation interface. At the top, there are tabs for 'Prioritize' and 'Select Surveys'. The main heading is 'Custom survey for Water Service #1'. Below this is a form with several fields:

- Survey title**: Custom survey for Water Service #1
- Which feedback**: What is a brief summary of the issue or topic you want to address in this survey?
- Choose the types of feedback**: What do you want to learn about this from the public?
- Very interested (2)**: What are examples of specific questions, if any, that you might want to ask? Please include specific choices, tradeoffs, priorities, data and so on as appropriate.
- Interested (0)**: Question...
- Slightly interested (0)**: Question...
- Not interested (0)**: Question...

Buttons for 'Add' and 'Done' are visible at the bottom right of the form.

Survey Results: Parks and Trails

Survey Info - This survey was sent on behalf of the City of Bedford to the FlashVote community for Bedford, TX.

These FlashVote results are shared with local officials

Filter results by

Member Panel

369

Total Participants

354 of 664 initially invited (53%)
15 others
Margin of error: ± 5%

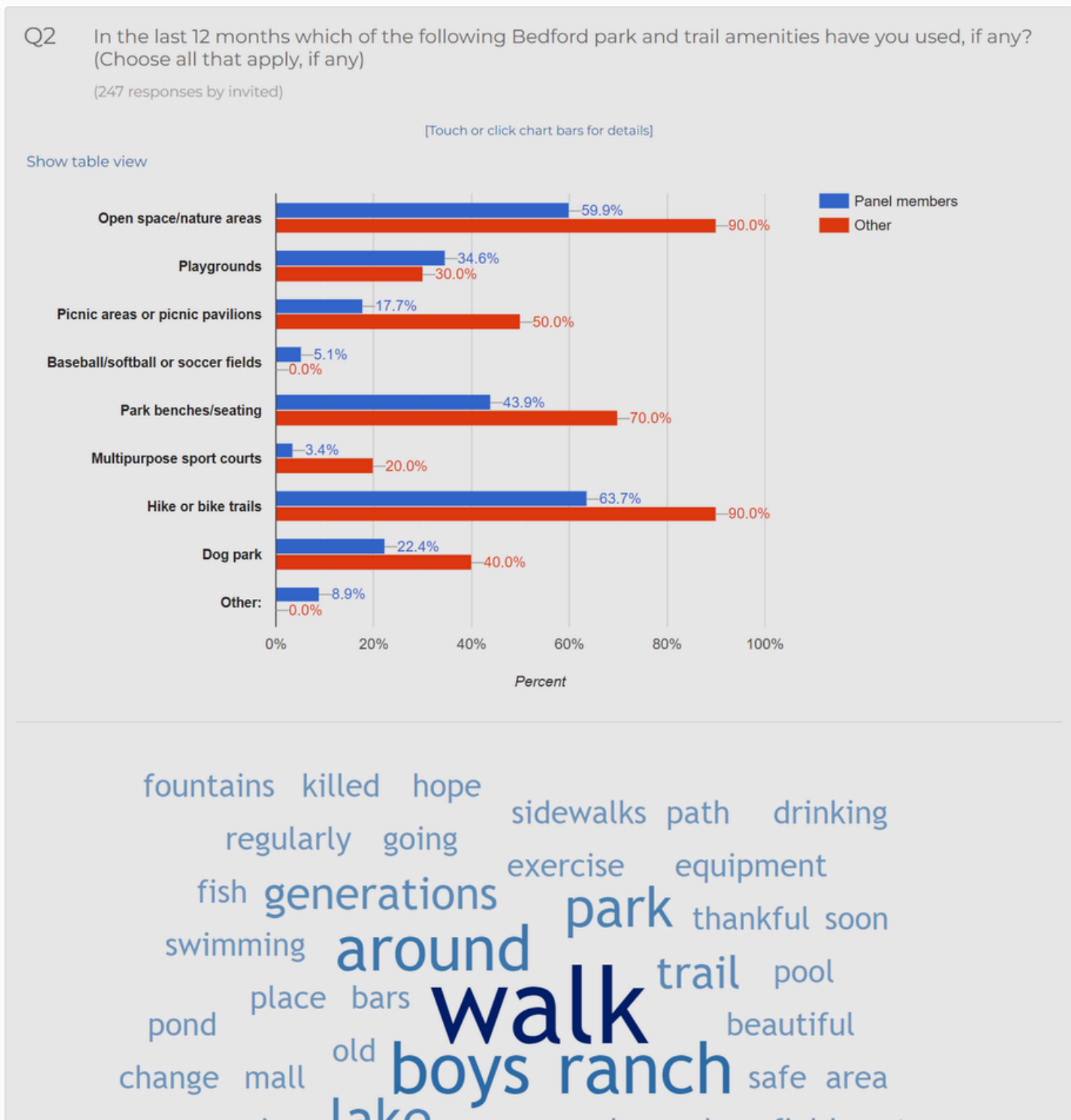
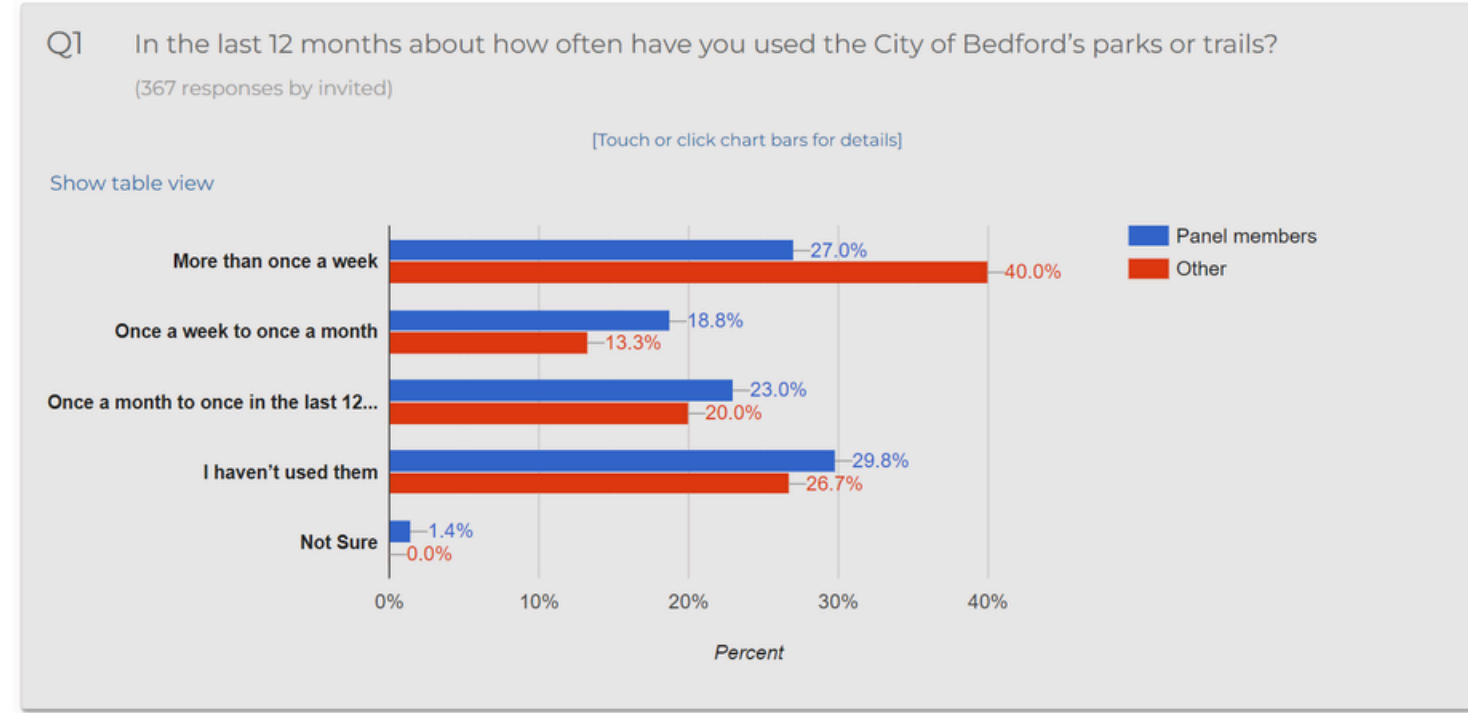
Applied Filter:
Member Panel

Response Time (hours)

Started:
May 3, 2022 11:06am CDT

Ended:
May 5, 2022 11:02am CDT

Target Participants:
All Bedford



Easy to interpret results with a clear dashboard

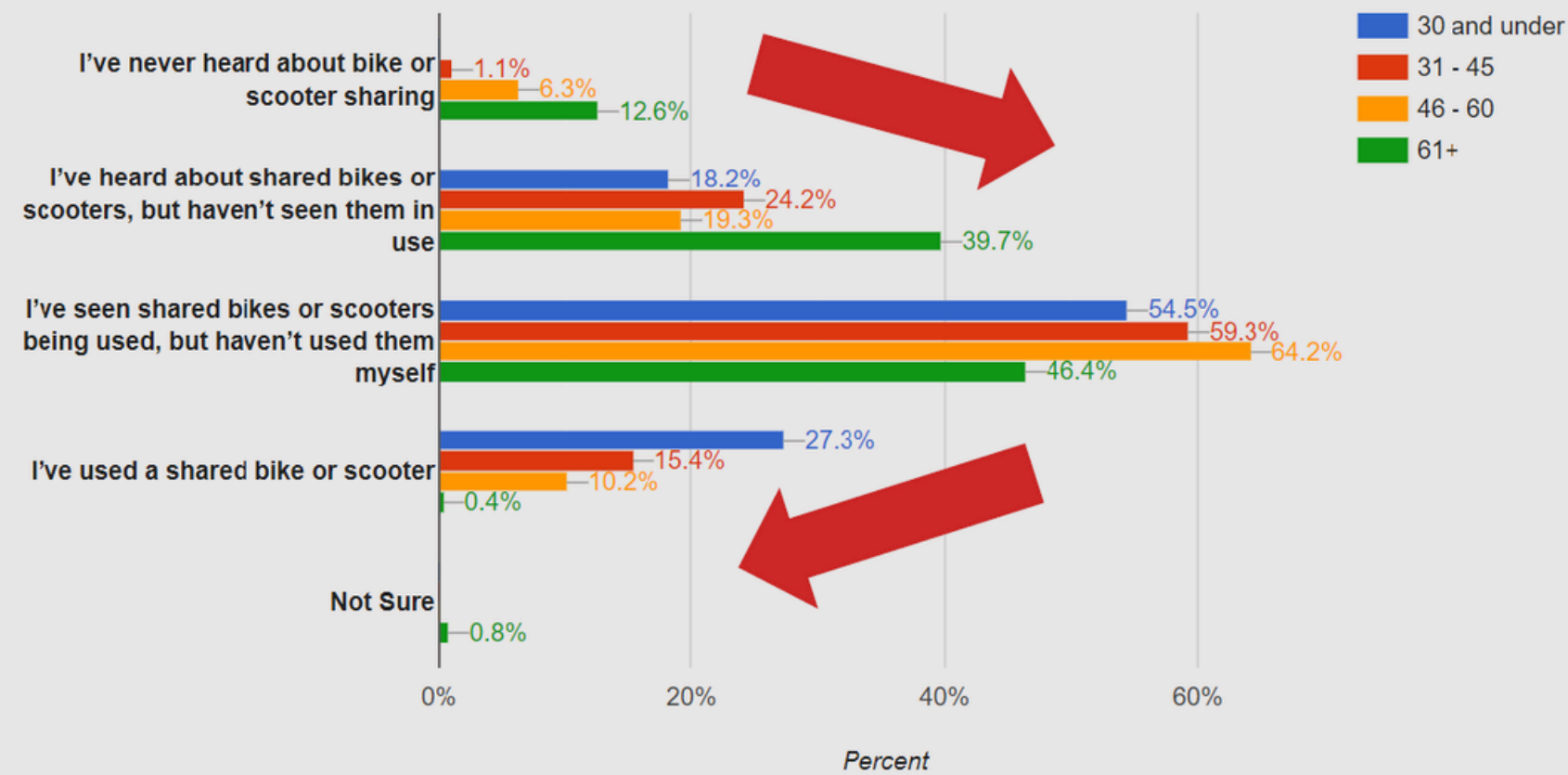
Filters Can Show Trends

Prior to reading this, which of the following best describes your experience with bike or scooter sharing?

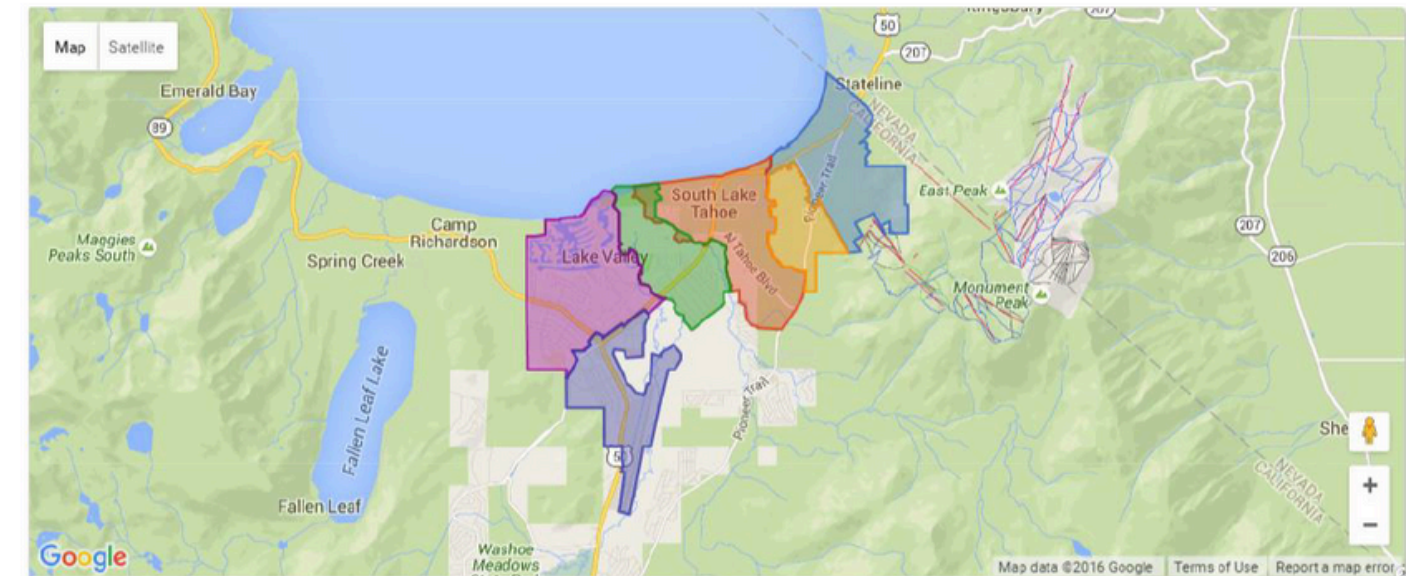
(517 responses by age)

[Touch chart bars for details]

Show table view

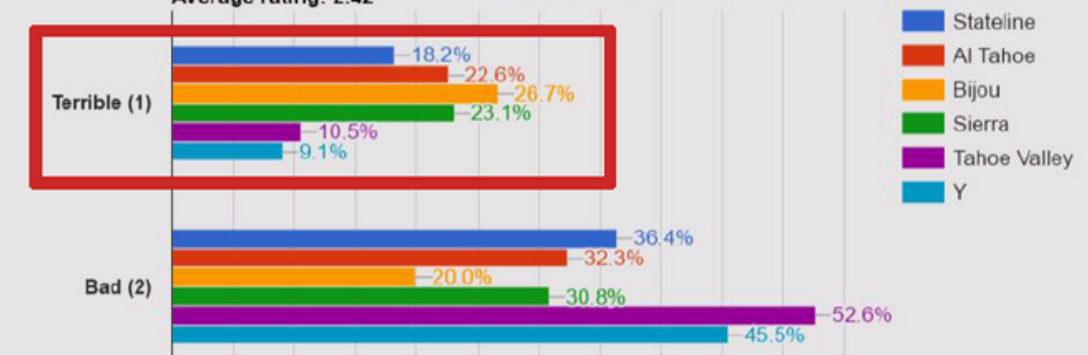


Filters Can Include Location Data



Q1 Please rate the condition of the streets in your neighborhood in South Lake Tahoe: (132 responses by location)

Average rating: 2.42 [Touch chart bars for details]



Open Responses Also Have Analytics

Q4

Any other comments or suggestions regarding communications from the City of South Lake Tahoe?

(40 responses by locals)



Responses containing 'great'

Show unfiltered responses

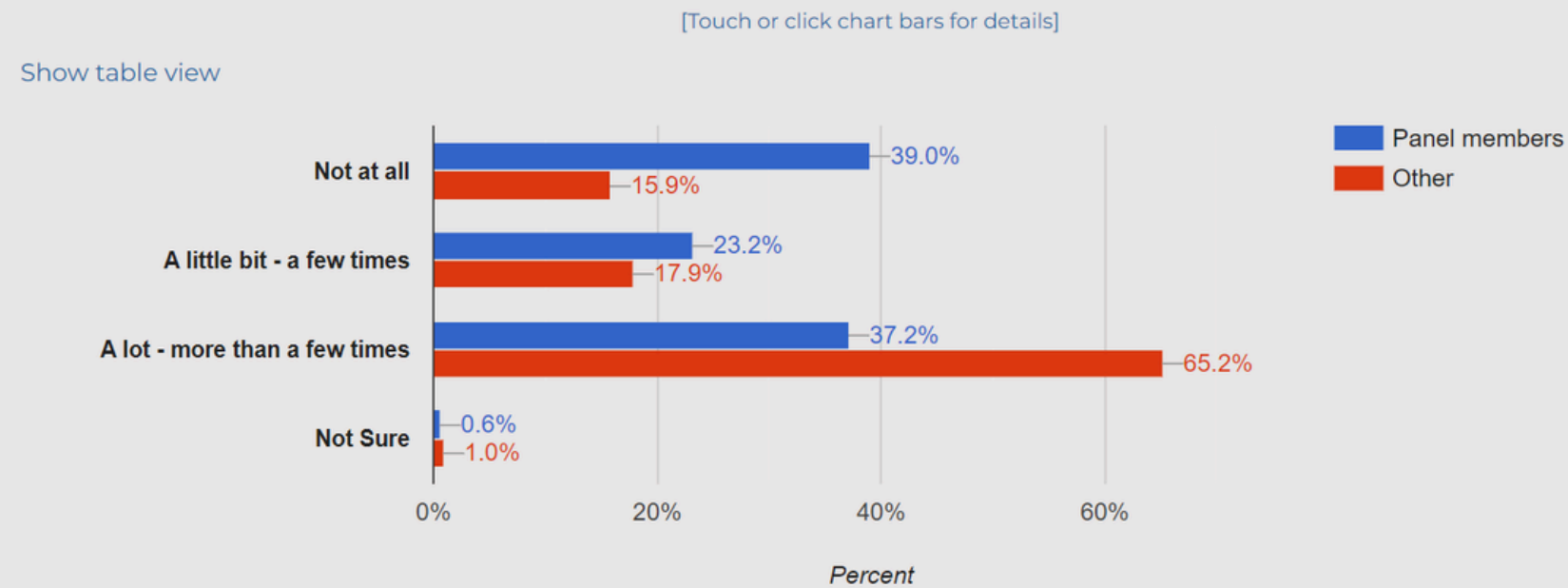
THANKS FOR YOUR EFFORTS ON MAKING SOUTH LAKE TAHOE A GREAT PLACE TO LIVE.

Tracy does a great job sending them out - maybe a weekly blast with all the things happening in the next week on Monday or Friday...

Q1 The City of Pacifica is looking at the possibility of allowing a bicycle park to be built at lower Frontierland Park (link to aerial map photo below).

In the last 12 months, which of the following best describes how often have you or a member of your family used a bicycle? [Proposed location at Frontierland Park \(map view\)](#)

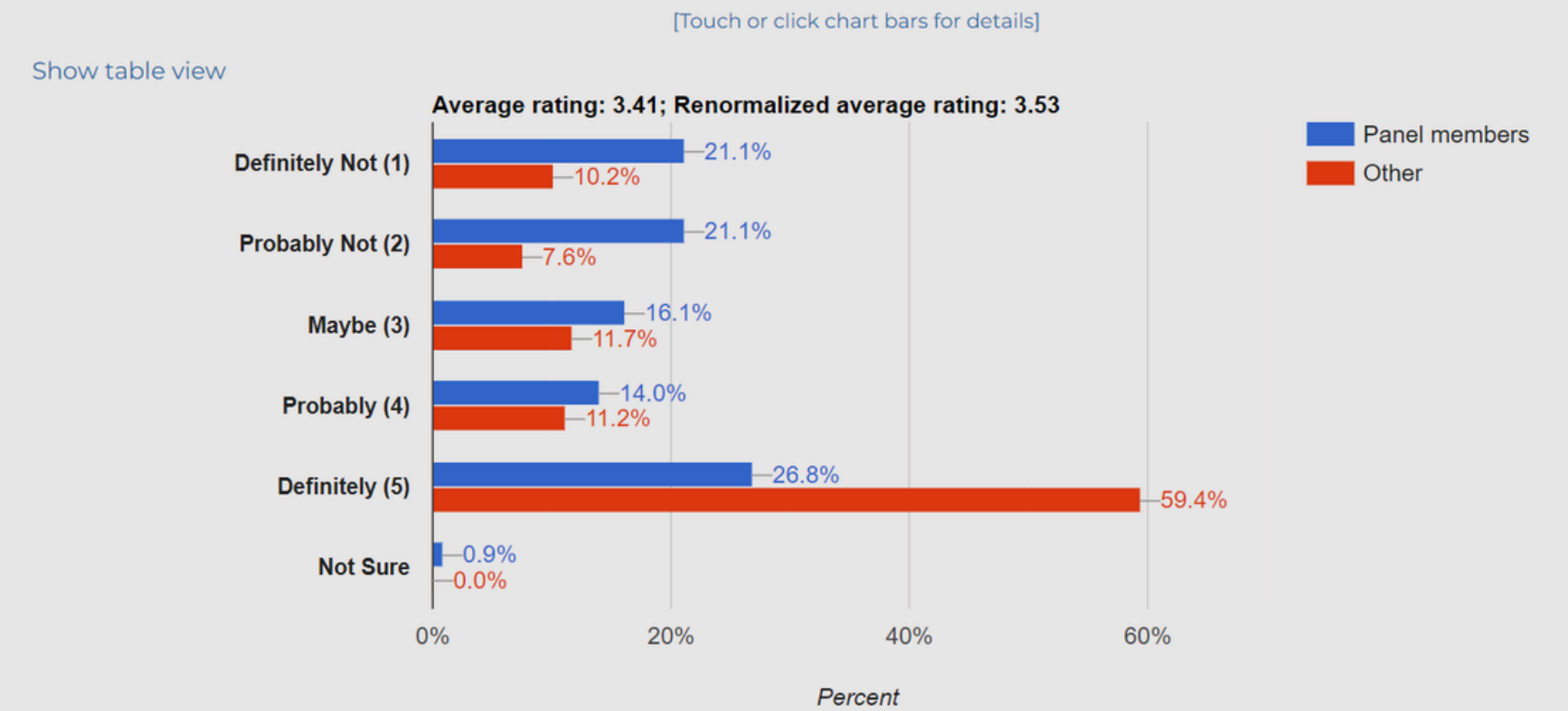
(537 responses by invited)



Q2 The bicycle park is expected to be about half dirt features and half paved, with features for riders of all ages and abilities. It would open in the morning and be closed at sundown (link to sample park images below).

If there was a bicycle park at Frontierland Park, do you think you or your family would use it? [Sample images of dirt and paved park features](#)

(533 responses by invited)



The blue bars represent the randomly selected participants that participated in the scientific sampling. The red bars represent the participants that self-selected to take the survey.

As you can see – **there is sometimes a HUGE disconnect between “the noisy” and the actual public sentiment.**

This is why accurate data gathering is so important.



A one-year agreement with FlashVote would allow the city to take six sample surveys in a year, giving us a chance for feedback on not just parks, but other areas.

It also allows us to show the community that their input is important to us in our decision-making.

