

90% CONSTRUCTION DOCUMENTS
FOR
CITY OF WILLOW PARK
PARKING LOT EXPANSION
120 EL CHICO TRAIL, SUITE A
CITY OF WILLOW PARK, PARKER COUNTY, TEXAS
AUGUST, 2024

FOR



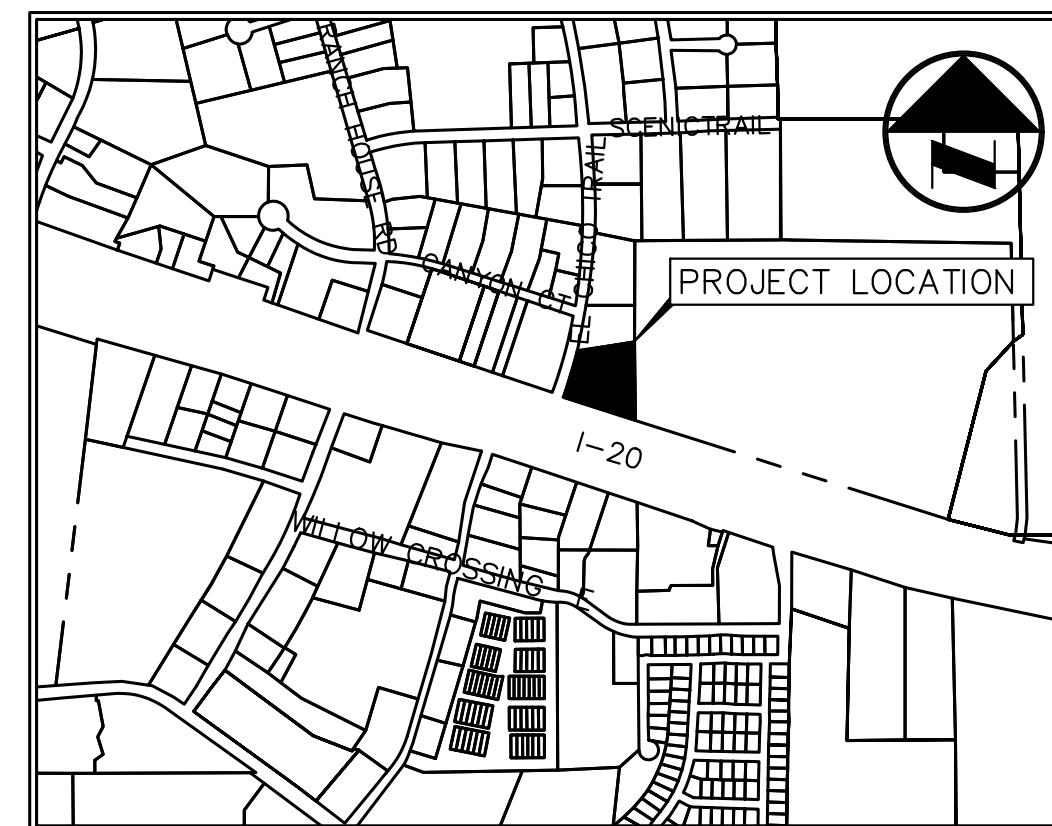
CITY OF WILLOW PARK
120 EL CHICO TRAIL, SUITE A
WILLOW PARK, TEXAS 76087

PREPARED BY

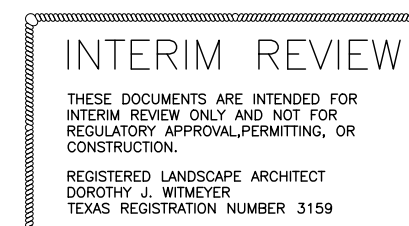
Westwood

Phone (817) 412-7155 4060 Bryant Irvin Road
Fort Worth, TX 76109

westwoods.com
Westwood Professional Services, Inc.
TSPS FIRM REGISTRATION NO. F-11752
TSPS FIRM REGISTRATION NO. 10074301



VICINITY MAP
(NOT TO SCALE)



MAYOR
DOYLE MOSS

CITY COUNCIL
ERIC CONTRERAS, PLACE NO. 1
CHAWN GILLILAND, PLACE NO. 2
GREG RUNNEBAUM, PLACE NO. 3
LEA YOUNG, MAYOR PRO TEM
NATHAN CRUMMEL, PLACE NO. 5

CITY STAFF
BILL FUNDERBURK, ASSISTANT CITY MANAGER
TONI FISHER, DIRECTOR OF PLANNING & DEVELOPMENT

BID NUMBER -

N:\0046356\0006 CAD\DWG\Landscapes FX\Sheets\SHEET INDEX AND GENERAL NOTES.dwg, L0.01, 8/13/2024 2:19:28 PM, GAirroyo

DRAWING SHEET INDEX

ISSUE DATE

August 13, 2024; 90% Construction Documents

LANDSCAPE																		
L0.00 - COVER SHEET	●																	
L0.01 - SHEET INDEX	●																	
L0.02 - GENERAL NOTES	●																	
L1.00 - DEMOLITION PLAN	●																	
L2.00 - LAYOUT PLAN	●																	
L2.01 - DIMENSIONAL CONTROL PLAN	●																	
L2.02 - HARDSCAPE DETAILS	●																	
L2.03 - HARDSCAPE DETAILS	●																	
L3.00 - PLANTING PLAN	●																	
L3.01 - PLANTING DETAILS	●																	
L4.00 - IRRIGATION PLAN	●																	
L4.01 - IRRIGATION DETAILS	●																	
CIVIL																		
C.1 PAVING & GRADING	●																	
ELECTRICAL																		
PLACEHOLDER 1	●																	
PLACEHOLDER 2	●																	

INTERIM REVIEW
 THESE DOCUMENTS ARE INTENDED FOR INTERIM REVIEW ONLY AND NOT FOR REGULATORY APPROVAL, PERMITTING, OR CONSTRUCTION.
 REGISTERED LANDSCAPE ARCHITECT
 DOROTHY J. WINNEVER
 TEXAS REGISTRATION NUMBER 3159

NO.	DATE	ISSUE
NO.	DATE	REVISION

Westwood 4060 BRYANT IRVIN ROAD
 FORT WORTH, TX 76109 T:817.412.7155
 Westwood Professional Services, Inc. www.westwoodps.com
 TBPELS ENGINEERING FIRM NO. 11756
 TBPELS SURVEYING FIRM NO. 10074301

SHEET INDEX
PARKING LOT EXPANSION
CITY HALL
120 EL CHICO TRAIL, SUITE A
CITY OF WILLOW PARK, PARKER COUNTY, TEXAS

DESIGN	DRAWN	DATE	SCALE	NOTES	FILE	NO.
DJW	GA	AUG 2024	AS SHOWN			L0.01

DEMOLITION GENERAL NOTES

- CONTRACTOR IS TO REVIEW ALL GENERAL NOTES PRIOR TO BEGINNING WORK.
- CONTRACTOR RESPONSIBLE FOR ANY DAMAGE TO TREES THAT ARE TO BE RELOCATED. CONTRACTOR TO INSTALL NEW TREE OF EQUIVALENT SIZE IF DAMAGED DURING RELOCATION.
- CONTRACTOR RESPONSIBLE FOR COORDINATING CONSTRUCTION DELIVERY & SERVICE ACCESS. CONTRACTOR RESPONSIBLE FOR ANY DAMAGE INCURRED TO FACILITIES & RETURN TO PRE-CONSTRUCTION CONDITIONS.
- SAWCUT AND REMOVE ALL EXISTING SIDEWALKS AND PAVEMENT AS SHOWN ON THE PLANS. COORDINATE TEMPORARY UTILITY SHUT DOWN IN ADVANCEMENT OWNERS REPRESENTATIVE.
- CONSULT THE DIMENSIONAL CONTROL PLAN. VERIFY THE PORTION OF EXISTING CONCRETE CURBS AND PAVEMENT WHICH ARE TO REMAIN.
- COORDINATE WITH LOCAL POWER, TELEPHONE, CABLE, AND GAS COMPANIES PRIOR TO THE REMOVAL AND/OR RELOCATION OF EXISTING UTILITIES.
- ALL UTILITIES SHOULD BE CUT AND PLUGGED IN ACCORDANCE WITH THEIR RESPECTIVE UTILITY COMPANY REQUIREMENTS PRIOR TO DEMOLITION.
- CONTRACTOR TO PLUG ALL EXISTING EXPOSED ENDS OF ABANDONED UTILITIES, IF ANY.
- CONTRACTOR TO DETERMINE SOURCE OF ALL EXPOSED UTILITIES AND, IF REQUIRED, RECONNECT TO PROPOSED UTILITIES.
- CONTRACTOR IS RESPONSIBLE FOR THE REMOVAL AND LEGAL DISPOSAL OF ALL THE UNSUITABLE MATERIALS FROM THE PROJECT SITE. CONTRACTOR SHALL CONTACT ALL LOCAL AUTHORITIES TO DETERMINE DISPOSAL REQUIREMENTS.
- CONTRACTOR IS RESPONSIBLE FOR ESTABLISHING AND MAINTAINING EROSION CONTROL MEASURES ON THE SITE IN ACCORDANCE WITH FEDERAL, STATE, AND LOCAL REGULATIONS UNTIL THE SITE HAS BEEN STABILIZED.
- CONTRACTOR IS RESPONSIBLE FOR GRADING ALL DISTURBED AREAS TO ALLOW FOR POSITIVE DRAINAGE. GRADING SLOPES ARE NOT TO EXCEED 3:1.
- AREAS EXCAVATED FOR FOUNDATION OR UNDERGROUND STRUCTURE REMOVAL SHALL BE BACK-FILLED AND COMPACTED TO A MINIMUM OF 95% STANDARD PROCTOR DENSITY.
- CONTRACTOR IS RESPONSIBLE FOR SECURITY OF THE SITE DURING DEMOLITION ACTIVITIES AND UNTIL SUBSTANTIAL COMPLETION.
- ALL WORK, UNLESS OTHERWISE NOTED, SHALL CONFORM TO THE STANDARD SPECIFICATIONS FOR PUBLIC WORKS CONSTRUCTION ISSUED BY THE NORTH CENTRAL TEXAS COUNCIL OF GOVERNMENTS AND CITY STANDARD CONSTRUCTION SPECIFICATIONS.
- THE HORIZONTAL AND VERTICAL LOCATIONS OF EXISTING SUBSURFACE UTILITIES HAVE BEEN DETERMINED FROM DATA RECORDED BY OTHERS. IT WILL BE THE RESPONSIBILITY OF THE CONTRACTOR TO PROTECT ALL UTILITY MAINS, MANHOLES, CLEANOUTS, VALVE BOXES, AND FIRE HYDRANTS, ETC. IN THE AREA OF DEMOLITION.

IRRIGATION GENERAL NOTES

- POINTS OF CONNECTION ARE APPROXIMATE. IRRIGATION CONTRACTOR SHALL COORDINATE WITH OWNER'S REPRESENTATIVE REGARDING THE MOST FEASIBLE LOCATIONS FOR TAPPING AN EXISTING WATER SOURCE.
- IRRIGATION CONTRACTOR IS RESPONSIBLE TO COORDINATE THE APPROPRIATE ZONE WIRING BACK TO THE EXISTING SYSTEM CONTROLLER, INCLUDING ANY DATA OR SYSTEM CONTROL VALVE WIRING AS REQUIRED.
- IRRIGATION CONTRACTOR IS RESPONSIBLE TO EXAMINE THE PLANS IN THEIR ENTIRETY TO DETERMINE THE APPROXIMATE LOCATION OF EXISTING AND PROPOSED UTILITIES. HE SHALL ALSO CONTACT THE APPROPRIATE AUTHORITY TO MARK UTILITIES ON THE SITE. THE IRRIGATION CONTRACTOR SHALL BE RESPONSIBLE FOR ANY DAMAGES TO UTILITIES ON THE SITE CAUSED BY HIS WORK.
- CONTRACTOR SHALL EXAMINE THE DETAILS FOR ADDITIONAL REQUIREMENTS FOR THE IRRIGATION SYSTEM AND ITS INSTALLATION.
- IRRIGATION DRAWINGS ARE SCHEMATIC IN NATURE. AT TIMES MAIN LINES, LATERALS AND VALVES MAY BE SHOWN IN PAVED AREAS OR OUTSIDE THE PROPERTY LINE FOR PLAN CLARITY PURPOSES ONLY. THE CONTRACTOR SHALL STAKE OUT IN THE FIELD ALL PRINCIPLE SYSTEM COMPONENTS FOR APPROVAL BY THE OWNERS REPRESENTATIVE PRIOR TO INSTALLATION.
- THE SYSTEM HAS BEEN DESIGNED TO FUNCTION WITH A MINIMUM DYNAMIC WATER PRESSURE OF 37.5 PSI AT A MINIMUM RATE OF 35 GPM AT THE POINT WHERE THE EXTENDED MAINLINE IS CONNECTED. THE CONTRACTOR SHALL TAKE THREE READINGS (ONE AT 7:00 A.M., ONE AT 12:00 P.M., AND ONE AT 7:00 P.M.) ON TWO SEPARATE DAYS AND SUBMIT TO THE OWNERS REPRESENTATIVE FOR VERIFICATION OF PRESSURE PRIOR TO BEGINNING THE WORK.
- ALL TRENCHING WITHIN DRIP LINES OF EXISTING TREES SHALL BE BY HAND TOOLS. SHOULD ROOTS OVER 3" IN DIAMETER BE ENCOUNTERED, THE CONTRACTOR MAY PROVIDE ANOTHER PIPE ROUTE IF LOCATION IS PROVIDED ON THE AS-BUILT DOCUMENTS.
- THE CONTRACTOR SHALL DEMONSTRATE TO AN OWNER'S REPRESENTATIVE THAT THE IRRIGATION SYSTEM IS FULLY FUNCTIONAL AND RUNNING PROPERLY PRIOR TO FINAL ACCEPTANCE AND BEGINNING OF THE WARRANTY PERIOD.
- NEW SYSTEM COMPONENTS ARE SHOWN. CONTRACTOR SHALL INCLUDE IN HIS PRICING THE FOLLOWING TASKS:
 - FULL SITE WALK WITH OWNERS REPRESENTATIVE TO EXAMINE CONTROLLERS, P.O.C.'S, WIRING, VALVES AND OTHER EXISTING COMPONENTS.
 - PRODUCE A SHOP DRAWING SUBMITTAL TO SHOW ANY DEVIATIONS PROPOSED FOR THE PROPOSED SYSTEM ADAPTATION.
 - PRODUCE AN AS-BUILT FILE MARK UP, LAMINATED AT 24"x36" OF THE NEW COMPONENTS AND WHAT WAS LEARNED IN 9.1.

LAYOUT & DIMENSION GENERAL NOTES

- WRITTEN DIMENSIONS SHALL GOVERN OVER SCALED DIMENSIONS.
- ALL IMPROVEMENTS SHALL BE STAKED IN THE FIELD BY THE CONTRACTOR AND APPROVED BY THE OWNER'S REPRESENTATIVE PRIOR TO CONSTRUCTION OR INSTALLATION. NOTIFICATION SHALL BE PROVIDED TO THE LANDSCAPE ARCHITECT ONE WEEK PRIOR TO REVIEW.
- CONTRACTOR SHALL VERIFY ALL UTILITIES SHOWN ON THE PLANS AS WELL HAVE THE SITE UTILITIES LOCATED ON THE GROUND PRIOR TO THE START OF CONSTRUCTION ACTIVITIES. IN THE EVENT THAT THE CONTRACTOR DISCOVERS AN UNDERGROUND UTILITY THAT IS NOT REPRESENTED WITHIN THE CONSTRUCTION DOCUMENTS OR AS MARKED ON THE SITE, HE SHALL IMMEDIATELY CONTACT THE OWNERS REPRESENTATIVE TO DETERMINE NEXT STEPS PRIOR TO ANY CONSTRUCTION ACTIVITIES WITHIN THE AREA OF THE NEWLY DISCOVERED UNDERGROUND UTILITY.
- THE CONTRACTOR SHALL EXAMINE THE SPECIFICATIONS FOR ADDITIONAL REQUIREMENTS AND DETAILS.
- ALL DIMENSIONS ARE TO BACK OF CURB AND FACE OF BUILDING UNLESS OTHERWISE NOTED.
- ACCESSIBLE RAMPS TO BE LOCATED AND INSTALLED AS SHOWN IN DRAWINGS. CONTRACTOR SHALL ENSURE THAT ALL TASIADA GUIDELINES ARE FOLLOWED.
- REINFORCEMENT SHALL BE PROVIDED IN THE CONCRETE IMPROVEMENTS AS SHOWN WITHIN THE CONSTRUCTION DETAILS AND SPECIFICATIONS AND SHALL BE INSTALLED CONTINUOUS THROUGH CONTROL JOINTS, AND PER DETAIL DRAWINGS FOR THE EXPANSION JOINTS.
- EXPANSION JOINT AND CONTROL JOINT SPACING SHALL BE LOCATED AS SHOWN ON PLANS AND DETAILS.
- CONTRACTOR SHALL PROVIDE AN EXPANSION JOINT WHERE PROPOSED CONCRETE MEETS EXISTING WALKS OR CURBS.
- GRADING IMPROVEMENTS HAVE BEEN DESIGNED WITH THE INTENT OF THE FOLLOWING GUIDELINES:
 - ALL WALKS SHALL HAVE A MAXIMUM CROSS SLOPE OF 2% IN THE DIRECTION OF THE DOWNHILL SIDE.
 - THE RUNNING SLOPE OF THE WALKS SHALL BE NO GREATER THAN 5%.
 - ALL GRADES SHALL BE FINISHED TO A SMOOTH, FLOWING CONTOUR, MAINTAINING FLOW PATTERNS THAT ALLOW THE WATER TO FLOW FROM PLANTED AREAS, ACROSS PAVED AREAS TO DRAINAGE COLLECTION POINTS AS DEPICTED IN THE CONSTRUCTION DOCUMENTS.
- THE CONTRACTOR SHALL ENSURE POSITIVE DRAINAGE THROUGHOUT CONSTRUCTION ACTIVITIES FOR THE PROJECT. ACCUMULATION OF STANDING WATER WILL NOT BE PERMITTED.
- THE CONTRACTOR IS TO LOCATE, DOCUMENT, AND PROTECT ALL CONTROL BENCH MARKS THROUGHOUT THE DURATION OF CONSTRUCTION ACTIVITIES.
- ALL QUANTITIES PROVIDED ARE TO BE VERIFIED AND ARE THE RESPONSIBILITY OF THE CONTRACTOR.
- IF DISCREPANCIES WITH PLAN AND MATERIAL/FURNISHING SCHEDULE SHOULD OCCUR, THE CONTRACTOR IS RESPONSIBLE TO VERIFY WITH LANDSCAPE ARCHITECT, PRIOR TO START OF CONSTRUCTION.

IRRIGATION MODIFICATION NOTES

THE CONTRACTOR SHALL VISIT THE SITE & DOCUMENT THE EXISTING IRRIGATION SYSTEM TO A LEVEL SUFFICIENT TO DETERMINE:

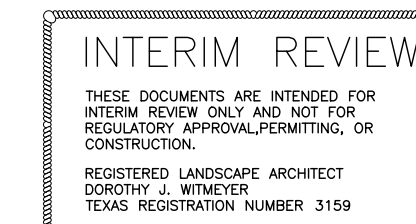
- THAT THE BACKFLOW PREVENTION DEVICE ON THE EXISTING SYSTEM IS FUNCTIONAL. IF NOT, HE SHALL PROVIDE A NEW ONE.
- THAT THE EXISTING CONTROLLER CAN ACCOMMODATE NEW ZONES OR EXISTING ZONES MODIFIED WITHIN TCEQ DESIGN CRITERIA TO ACCOMMODATE EXISTING ZONES. PROVIDE NEW CONTROLLER IS NECESSARY.
- IF EXISTING RAINFREEZE SENSOR IS PRESENT & FUNCTIONAL. IF NOT, PROVIDE ONE COMPATIBLE WITH CONTROLLER.
- WHAT MANUFACTURER IS CURRENTLY IN USE & PROVIDE SAME BRAND OF EQUIPMENT TO MODIFIED ZONES.

CONTRACTOR SHALL:

- FOLLOW ALL TCEQ IRRIGATION REQUIREMENTS & STANDARDS.
- PROVIDE LAMINATED 8 1/2" X 11" AS-BUILT OF THE FINISHED/MODIFIED SYSTEM.
- DEMONSTRATE TO AN OWNER'S REPRESENTATIVE THAT THE IRRIGATION SYSTEM IS FULLY FUNCTIONAL AND RUNNING PROPERLY PRIOR TO FINAL ACCEPTANCE AND BEGINNING OF THE WARRANTY PERIOD
- PROVIDE THAT ALL TRENCHING WITHIN DRIP LINE OF EXISTING TREES SHALL BE DONE WITH HAND TOOLS AND SHALL NOT CUT ANY ROOT OVER 3" DIAMETER.
- EXAMINE THE PLANS IN THEIR ENTIRETY TO DETERMINE THE APPROXIMATE LOCATION OF EXISTING AND PROPOSED UTILITIES. HE SHALL ALSO CONTACT THE APPROPRIATE AUTHORITY TO MARK UTILITIES ON THE SITE. THE IRRIGATION CONTRACTOR SHALL BE RESPONSIBLE FOR ANY DAMAGES TO UTILITIES ON THE SITE CAUSED BY HIS WORK.

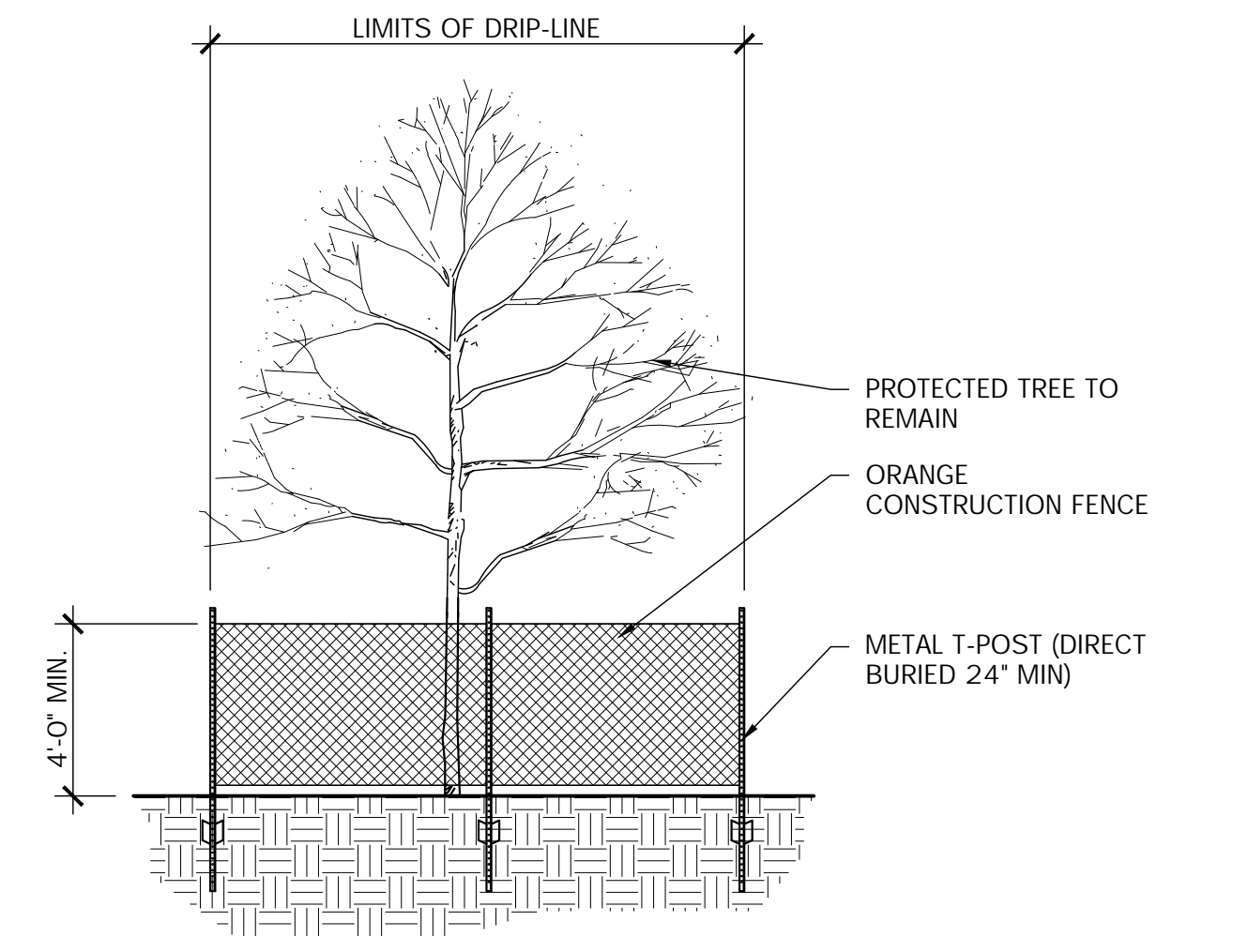
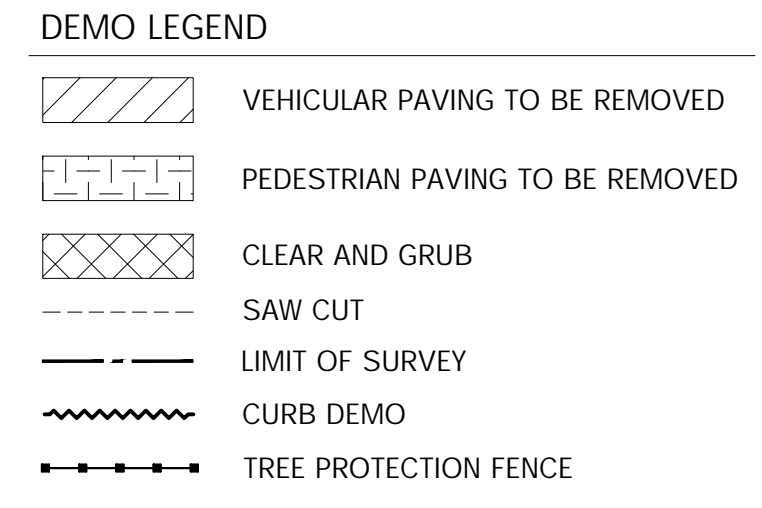
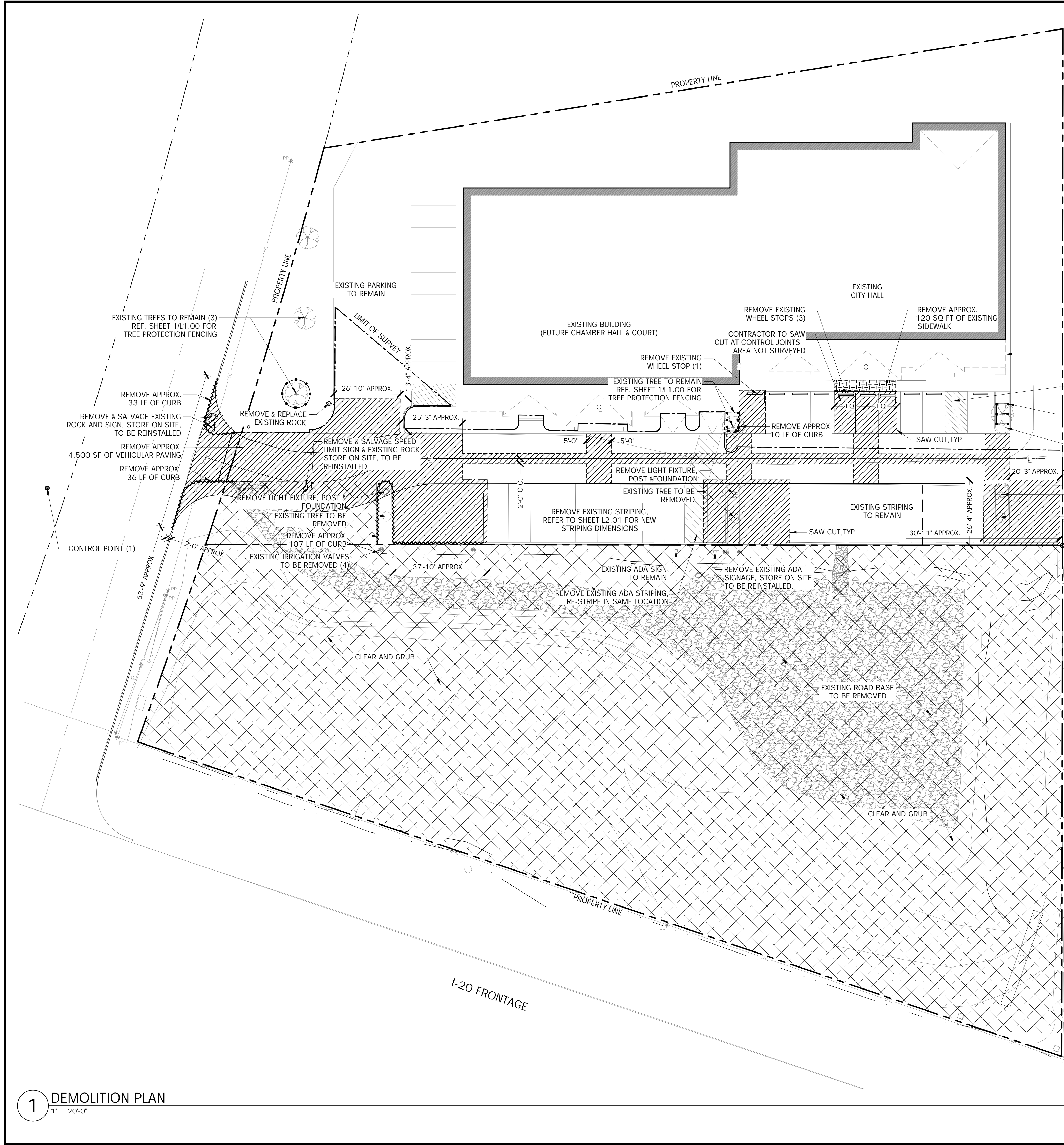
PLANTING GENERAL NOTES

- ALL PLANTS SHALL BE SET OUT FOR APPROVAL BY THE OWNER'S REPRESENTATIVE PRIOR TO INSTALLATION.
- FINE GRADING SHALL BE PERFORMED IN ALL AREAS TO BE LANDSCAPED. FINE GRADING SHALL INCLUDE THE REMOVAL OF DEBRIS, ROCKS, ETC. FROM THE SITE AND INSURE POSITIVE DRAINAGE IN ALL AREAS.
- THE CONTRACTOR SHALL LOCATE ALL UTILITIES AND EASEMENTS IN THE FIELD PRIOR TO COMMENCEMENT OF WORK. CONTRACTOR IS RESPONSIBLE FOR ANY DAMAGE TO UTILITIES DURING THE COURSE OF CONSTRUCTION.
- WRITTEN DIMENSIONS SHALL GOVERN OVER SCALED DIMENSIONS.
- THE CONTRACTOR SHALL REFER TO THE SPECIFICATIONS FOR ADDITIONAL INFORMATION AND REQUIREMENTS ASSOCIATED WITH THE LANDSCAPE AND ACCESSORIES.
- ALL PLANT MATERIALS SHALL MEET ANSI Z60.1 STANDARDS FOR CALIPER, HEIGHT AND ROOT BALL SIZE. ANY MATERIALS THAT DO NOT MEET OR EXCEED SUCH STANDARDS SHALL BE REJECTED AND REPLACED AT THE CONTRACTOR'S EXPENSE.
- BALLED AND BURLAPPED TREES SHALL HAVE THE TOP HALF OF THE WIRE BASKET REMOVED. THE BURLAP SHALL BE REMOVED TO THE GREATEST EXTENT POSSIBLE, USING A KNIFE TO CUT AND REMOVE THE BOTTOM HALF UNDER THE WIRE BASKET THAT REMAINS.
- QUANTITIES ARE SHOWN FOR CONVENIENCE ONLY. CONTRACTOR IS RESPONSIBLE FOR VERIFYING ALL QUANTITIES
- LIMITS OF DISTURBANCE ARE BASED UPON THE GRADING PLANS AND ARE APPROXIMATE. CONTRACTOR IS RESPONSIBLE FOR RE-ESTABLISHING SOD IN ALL AREAS DISTURBED FROM CONSTRUCTION ACTIVITIES AT NO ADDITIONAL COST TO THE OWNER.



NO.	DATE	ISSUE				
NO.	DATE	REVISION				
Westwood 4060 BRYANT IRVIN ROAD FORT WORTH, TX 76109 T:817.412.7155 Westwood Professional Services, Inc. www.westwoodga.com TBPELS ENGINEERING FIRM NO. 11756 TBPELS SURVEYING FIRM NO. 10074301						
GENERAL NOTES						
PARKING LOT EXPANSION						
CITY HALL						
120 EL CHICO TRAIL , SUITE A						
CITY OF WILLOW PARK, PARKER COUNTY, TEXAS						
DESIGN	DRAWN	DATE	SCALE	NOTES	FILE	NO.
DJW	GA	AUG 2024	AS SHOWN			L0.02

N:\0046356.00\06 CAD\DWG\Demolition Sheet.dwg, L1.00, 8/13/2024 2:19:31 PM, G:\arroyo



1 TREE PROTECTION FENCING
3/4" = 1'-0"

- NOTE:**
- THE BUILDING AND SITE WERE NOT SURVEYED NORTH OF THE THE FIRE LANE. CONTRACTOR TO SUBMIT LIMITS OF DEMOLITION OF SITE PRIOR TO REMOVAL.
 - SURVEY BENCHMARK / CONTROL POINT (1)
NORTHING: 6951233.2590'
EASTING: 2236215.7760'
POINT ELEVATION: 937.529'
 - SURVEY BENCHMARK / CONTROL POINT (2)
NORTHING: 6951215.3780
EASTING: 2236624.8640
POINT ELEVATION: 947.851
 - CONTRACTOR TO REMOVE EXISTING TREE STAKING WITHIN PROPERTY LINE.
 - CONTRACTOR TO REMOVE, SALVAGE AND STORE ITEMS INDICATED ON THE DEMOLITION PLAN - COORDINATE AND INSTALL AT NEW LOCATIONS INDICATED ON LAYOUT PLANS.

NO.	DATE	ISSUE

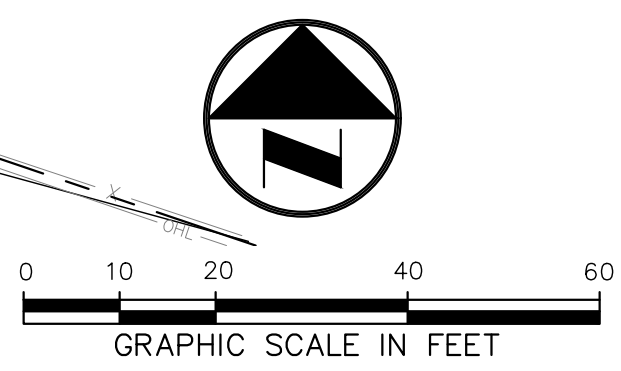
NO.	DATE	REVISION

Westwood
4060 BRYANT IRVIN ROAD
FORT WORTH, TX 76109 T:817.412.7155
Westwood Professional Services, Inc. www.westwood.com
TBPELS ENGINEERING FIRM NO. 11756
TBPELS SURVEYING FIRM NO. 10074301

DEMOLITION PLAN
PARKING LOT EXPANSION
CITY HALL
120 EL CHICO TRAIL, SUITE A
CITY OF WILLOW PARK, PARKER COUNTY, TEXAS

DESIGN	DRAWN	DATE	SCALE	NOTES	FILE	NO.
DJW	GA	AUG 2024	AS SHOWN			L1.00

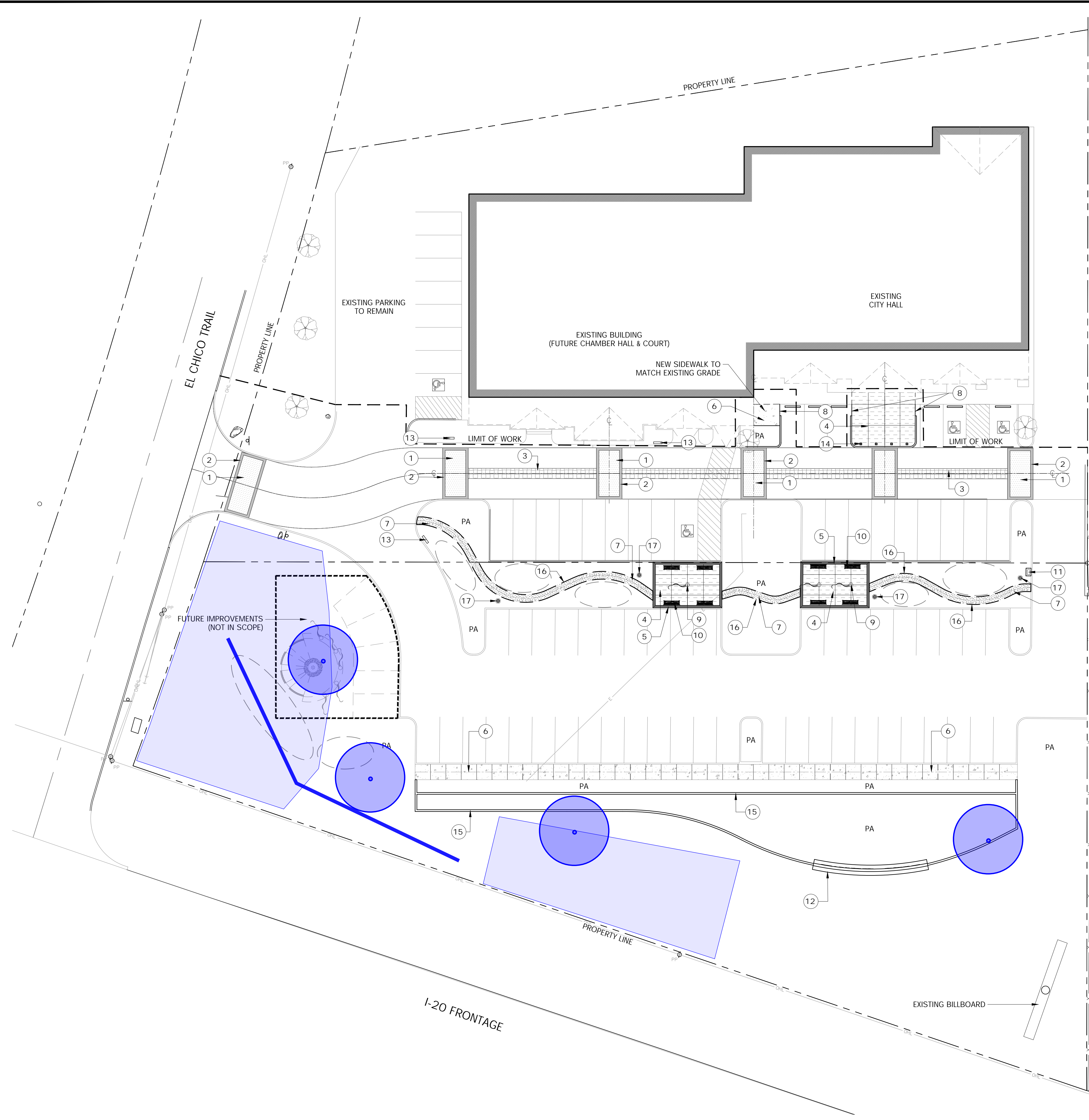
1 DEMOLITION PLAN
1" = 20'-0"



INTERIM REVIEW
THESE DOCUMENTS ARE INTENDED FOR INTERIM REVIEW ONLY AND NOT FOR REGULATORY APPROVAL, PERMITTING, OR CONSTRUCTION.
REGISTERED LANDSCAPE ARCHITECT
DOROTHY J. WINNEVER
TEXAS REGISTRATION NUMBER 3159

CITY HALL PARKING LOT

N:\0046356.00\06 CAD\DWG\Landscape FX\Sheets\Layout SHEETS.dwg, L2.00, 8/13/2024 2:19:40 PM, GAirroyo



HARDSCAPE SCHEDULE

SYMBOL	DESCRIPTION	QTY	DETAIL
①	VEHICULAR PAVING 1 - ENHANCED SIKA OR APPROVED EQUAL COLOR: ROMAN TILE C3760 PATTERN: 6' X 6' SLATE STAMP	897 SF	REF. CIVIL
②	VEHICULAR PAVING 2 - ENHANCED SIKA OR APPROVED EQUAL COLOR: SPRING BEIGE C135	343 SF	REF. CIVIL
③	VEHICULAR PAVING 3 - ENHANCED SIKA OR APPROVED EQUAL COLOR: ANTIQUE CORK C26 PATTERN: HERRINGBONE	722 SF	REF. CIVIL
④	PEDESTRIAN PAVING 1 - ENHANCED SIKA OR APPROVED EQUAL COLOR: BARK C3150 PATTERN: FOX VALLEY FLAGSTONE	1,317 SF	1/L2.03
⑤	PEDESTRIAN PAVING 2 - ENHANCED SIKA OR APPROVED EQUAL COLOR: BURNT RED	172 SF	1/L2.03
⑥	PEDESTRIAN PAVING 3 STANDARD CONCRETE PAVING FINISH: MEDIUM BROOM	1,523 SF	1/L2.03
⑦	DECOMPOSED GRANITE	621 SF	6/L2.03
⑧	FADE OUT CURB - MATCH EXISTING GRADE	14 LF	
⑨	FLAG POLES	3	3/L2.03
⑩	BENCH - ANOVA, FROG FURNISHINGS, HERITAGE 6' RECYCLED PLASTIC BENCH, BENCH AND FRAME COLOR: GREEN OR APPROVED EQUAL	8	REF. MANUFACTURER
⑪	UTILITY BILL DROP OFF	1	REF. MANUFACTURER
⑫	CITY HALL SIGN	1	1/L2.04
⑬	WAYFINDING SIGN	3	4/L2.03
⑭	BOLLARD - QCP, BEACON 36, COLOR: LATTE, HPC FINISHES: HPC SANDSTONE OR APPROVED EQUAL	4	REF. MANUFACTURER
⑮	MOW CURB	462 LF	2/L2.03
⑯	STEEL EDGING	433 LF	6/L2.03
⑰	PEDESTRIAN LIGHT POSTS	4	REF. ELECTRICAL PLANS & MANUFACTURER
---	EXPANSION JOINTS, TYP.		
- - -	CONTROL JOINTS, TYP.		
PA	PLANTING AREA, TYP.		

IEWS I-20 - POSITIVE
 SENSE OF ENCLURE AND SEPERATION FROM I-20
 NOISE
 FITTING INTO THE SITE SO IT LOOKS PURPOSEFUL
 BLOCKING VIEWS TO CITY HALL
 PARKING/ACCESS

- NOTE:**
- THE BUILDING AND SITE WERE NOT SURVEYED NORTH OF THE FIRE LANE. CONTRACTOR TO SUBMIT ANY CONFLICTS FOR IMPROVEMENTS PRIOR TO INSTALL.
 - SURVEY BENCHMARK / CONTROL POINT (1)
 NORTHING: 6951233.2590
 EASTING: 2236215.7760'
 POINT ELEVATION: 937.529'
 - SURVEY BENCHMARK / CONTROL POINT (2)
 NORTHING: 6951215.3780
 EASTING: 2236624.8640
 POINT ELEVATION: 947.851
 - CONTRACTOR TO INSTALL SALVAGED ITEMS AT NEW LOCATIONS INDICATED ON LAYOUT PLANS.
 - ALL FURNISHINGS COLORS AND LOCATIONS TO BE APPROVED BY THE CITY OF WILLOW PARK.
 - ALL FURNISHINGS ARE TO BE ASSEMBLED AND INSTALLED PER MANUFACTURER'S SPECIFICATIONS AND WITH VANDAL RESISTANT HARDWARE AND TO BE SECURED FIRMLY TO FINISH GRADE TO PREVENT MOVEMENT.
 - ALL SURFACE MOUNTED SITE FURNISHINGS TO BE FIELD LOCATED AND APPROVED BY THE CITY OF WILLOW PARK PRIOR TO INSTALLATION.

NO.	DATE	ISSUE

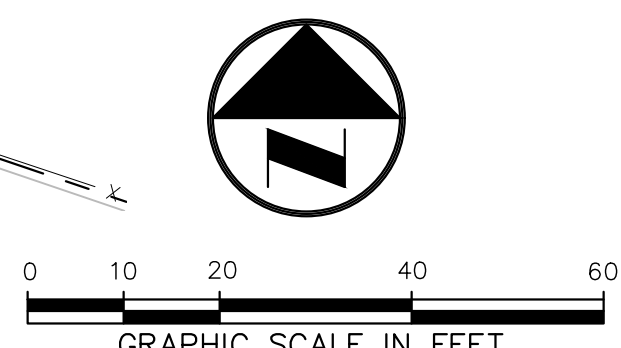
NO.	DATE	REVISION

Westwood
 4060 BRYANT IRVIN ROAD
 FORT WORTH, TX 76109 T:817.412.7155
 TBPELS ENGINEERING FIRM NO. 11756
 TBPELS SURVEYING FIRM NO. 10074301

LAYOUT PLAN
PARKING LOT EXPANSION
CITY HALL
120 EL CHICO TRAIL, SUITE A
CITY OF WILLOW PARK, PARKER COUNTY, TEXAS

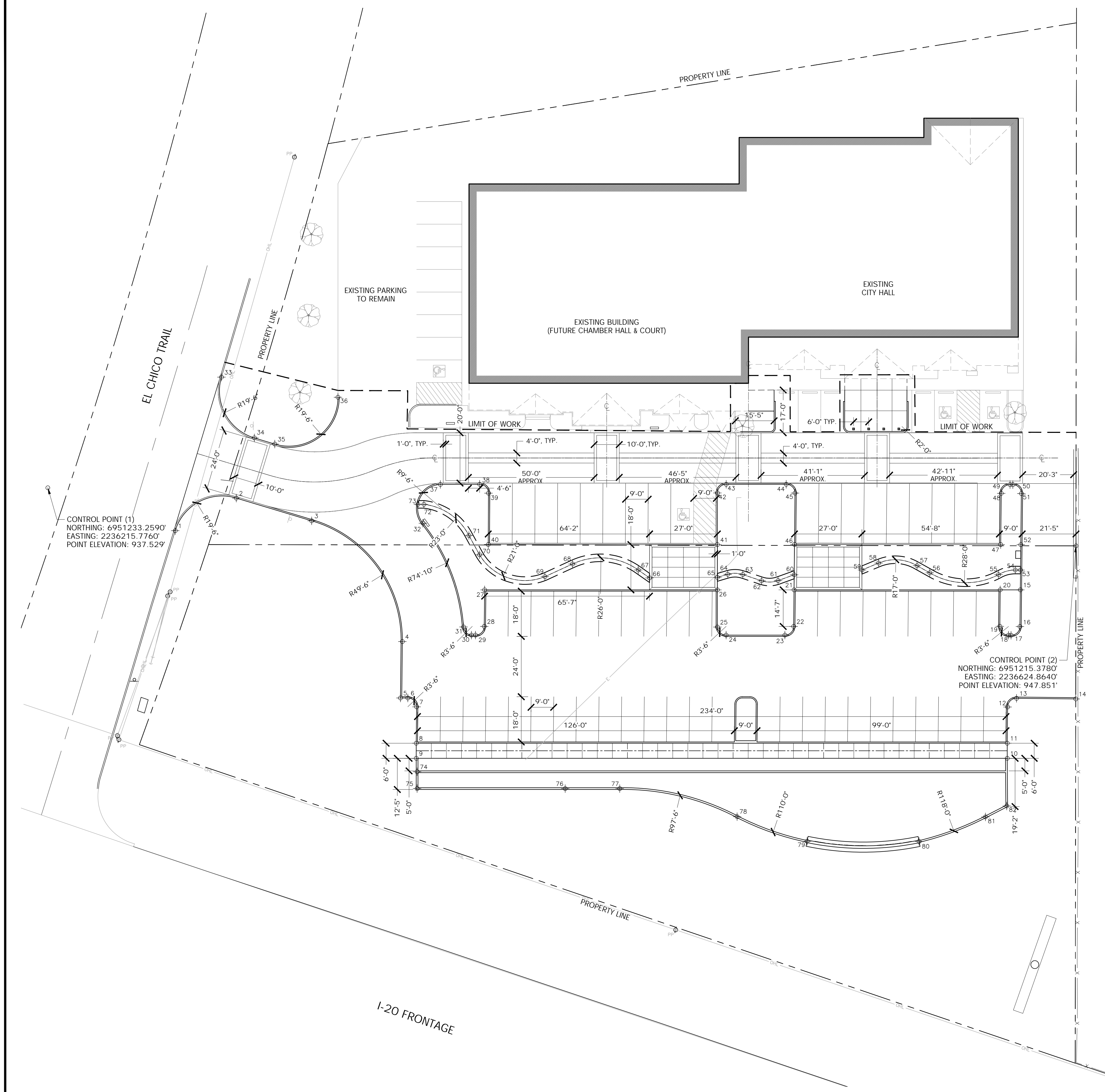
DESIGN	DRAWN	DATE	SCALE	NOTES	FILE	NO.
DJW	GA	AUG 2024	AS SHOWN			L1.00

1 LAYOUT PLAN
1" = 20'-0"



INTERIM REVIEW
 THESE DOCUMENTS ARE INTENDED FOR INTERIM REVIEW ONLY AND NOT FOR REGULATORY APPROVAL, PERMITTING, OR CONSTRUCTION.
 REGISTERED LANDSCAPE ARCHITECT
 DOROTHY J. WINNEVER
 TEXAS REGISTRATION NUMBER 3159

CITY HALL PARKING LOT



NORTHING/EASTING POINT SCHEDULE

POINT	DESCRIPTION	NORTHING	EASTING
1	BACK OF CURB	N 6951216.8673	E 2236266.6768
2	BACK OF CURB	N 6951230.1178	E 2236290.7801
3	BACK OF CURB	N 6951221.4653	E 2236320.8524
4	BACK OF CURB	N 6951173.9001	E 2236357.5273
5	BACK OF CURB	N 6951151.4602	E 2236357.0756
6	BACK OF CURB	N 6951151.4972	E 2236359.9822
7	BACK OF CURB	N 6951148.0050	E 2236363.5267
8	BACK OF CURB	N 6951133.5412	E 2236363.5579
9	EDGE OF SIDEWALK	N 6951127.5417	E 2236363.6341
10	EDGE OF SIDEWALK	N 6951130.5297	E 2236598.6172
11	BACK OF CURB	N 6951136.5292	E 2236598.5409
12	BACK OF CURB	N 6951150.9374	E 2236598.5099
13	BACK OF CURB	N 6951154.4374	E 2236602.0024
14	BACK OF CURB	N 6951154.4880	E 2236625.5471
15	BACK OF CURB	N 6951197.5904	E 2236602.9664
16	BACK OF CURB	N 6951182.9996	E 2236602.9978
17	BACK OF CURB	N 6951179.4921	E 2236599.5053
18	BACK OF CURB	N 6951179.4899	E 2236598.4983
19	BACK OF CURB	N 6951182.9824	E 2236594.9983
20	BACK OF CURB	N 6951197.4887	E 2236594.9671
21	BACK OF CURB	N 6951196.4381	E 2236513.0040
22	BACK OF CURB	N 6951181.9013	E 2236513.0453
23	BACK OF CURB	N 6951178.4016	E 2236509.5898
24	BACK OF CURB	N 6951178.1046	E 2236486.2139
25	BACK OF CURB	N 6951181.2681	E 2236482.7179
26	BACK OF CURB	N 6951196.0594	E 2236482.5298
27	BACK OF CURB	N 6951194.8821	E 2236389.9828
28	BACK OF CURB	N 6951180.3444	E 2236390.0140
29	BACK OF CURB	N 6951176.8371	E 2236386.5586
30	BACK OF CURB	N 6951176.8168	E 2236384.9587
31	BACK OF CURB	N 6951180.0213	E 2236381.7958
32	BACK OF CURB	N 6951221.0845	E 2236365.0924
33	BACK OF CURB	N 6951278.1513	E 2236284.2768
34	BACK OF CURB	N 6951254.1523	E 2236297.6629
35	BACK OF CURB	N 6951251.8096	E 2236305.8058
36	BACK OF CURB	N 6951270.7550	E 2236330.6961
37	BACK OF CURB	N 6951236.5976	E 2236371.8512
38	BACK OF CURB	N 6951236.8489	E 2236387.4743
39	BACK OF CURB	N 6951233.3569	E 2236391.0294
40	BACK OF CURB	N 6951212.9334	E 2236391.1945
41	BACK OF CURB	N 6951214.0304	E 2236482.3013
42	BACK OF CURB	N 6951234.5990	E 2236482.0400
43	BACK OF CURB	N 6951238.0987	E 2236485.4955
44	BACK OF CURB	N 6951238.4020	E 2236509.3501
45	BACK OF CURB	N 6951234.9425	E 2236512.8944
46	BACK OF CURB	N 6951214.4963	E 2236512.9526
47	BACK OF CURB	N 6951215.4990	E 2236594.9282
48	BACK OF CURB	N 6951235.8904	E 2236594.8845
49	BACK OF CURB	N 6951239.3901	E 2236598.3400
50	BACK OF CURB	N 6951239.4022	E 2236599.4657
51	BACK OF CURB	N 6951235.9106	E 2236602.8839
52	BACK OF CURB	N 6951215.5623	E 2236602.9277
53	TRAIL - CENTERLINE	N 6951205.4626	E 2236602.9494
54	TRAIL - CENTERLINE	N 6951205.4581	E 2236600.8577
55	TRAIL - CENTERLINE	N 6951203.5339	E 2236594.2149
56	TRAIL - CENTERLINE	N 6951203.9129	E 2236566.8757
57	TRAIL - CENTERLINE	N 6951206.6811	E 2236561.7814
58	TRAIL - CENTERLINE	N 6951207.5337	E 2236546.4868
59	TRAIL - CENTERLINE	N 6951204.6967	E 2236539.9138
60	TRAIL - CENTERLINE	N 6951202.4459	E 2236512.9696
61	TRAIL - CENTERLINE	N 6951200.0591	E 2236506.5899
62	TRAIL - CENTERLINE	N 6951199.8952	E 2236500.0556
63	TRAIL - CENTERLINE	N 6951202.2832	E 2236492.5455
64	TRAIL - CENTERLINE	N 6951202.3090	E 2236486.5676
65	TRAIL - CENTERLINE	N 6951201.0440	E 2236482.4664
66	TRAIL - CENTERLINE	N 6951200.4821	E 2236455.4794
67	TRAIL - CENTERLINE	N 6951203.5661	E 2236450.9664
68	TRAIL - CENTERLINE	N 6951205.6241	E 2236424.8028
69	TRAIL - CENTERLINE	N 6951200.4263	E 2236413.8649
70	TRAIL - CENTERLINE	N 6951208.7956	E 2236387.7951
71	TRAIL - CENTERLINE	N 6951216.4383	E 2236383.4621
72	TRAIL - CENTERLINE	N 6951228.5864	E 2236365.4070
73	TRAIL - CENTERLINE	N 6951228.5632	E 2236363.0437
74	MOWCURB - CENTERLINE	N 6951122.1972	E 2236364.0628
75	MOWCURB - CENTERLINE	N 6951115.4976	E 2236364.1479
76	MOWCURB - CENTERLINE	N 6951116.2430	E 2236423.0242
77	MOWCURB - CENTERLINE	N 6951116.5163	E 2236444.7075
78	MOWCURB - CENTERLINE	N 6951105.9518	E 2236491.4996
79	MOWCURB - CENTERLINE	N 6951096.4860	E 2236519.4561
80	MOWCURB - CENTERLINE	N 6951096.9952	E 2236563.9884
81	MOWCURB - CENTERLINE	N 6951107.0981	E 2236590.2454
82	MOWCURB - CENTERLINE	N 6951111.5535	E 2236598.6631

NOTE:

- THE BUILDING AND SITE WERE NOT SURVEYED NORTH OF THE FIRE LANE. CONTRACTOR TO SUBMIT ANY CONFLICTS FOR IMPROVEMENTS PRIOR TO INSTALL.
- SURVEY BENCHMARK / CONTROL POINT (1)
NORTHING: 6951233.2590'
EASTING: 2236215.7760'
POINT ELEVATION: 937.529'

SURVEY BENCHMARK / CONTROL POINT (2)
NORTHING: 6951215.3780
EASTING: 2236624.8640
POINT ELEVATION: 947.851

NO.	DATE	ISSUE

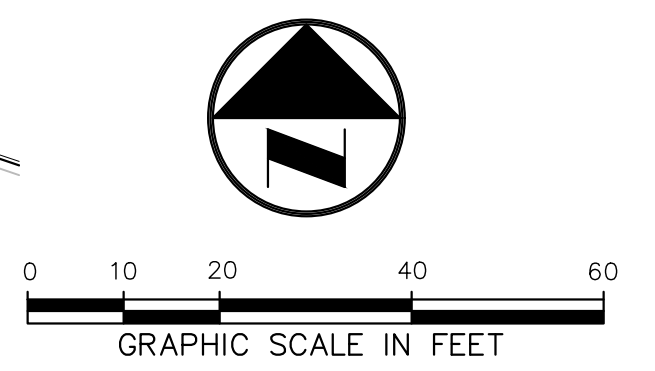
NO.	DATE	REVISION

Westwood
 4060 BRYANT IRVIN ROAD
 FORT WORTH, TX 76109 T:817.412.7155
 WESTWOOD PROFESSIONAL SERVICES, INC. TBPELS ENGINEERING FIRM NO. 11756
 TBPELS SURVEYING FIRM NO. 10074301

DIMENSIONAL CONTROL PLAN
PARKING LOT EXPANSION
CITY HALL
120 EL CHICO TRAIL, SUITE A
CITY OF WILLOW PARK, PARKER COUNTY, TEXAS

DESIGN	DRAWN	DATE	SCALE	NOTES	FILE	NO.
DJW	GA	AUG 2024	AS SHOWN			L2.01

1 DIMENSIONAL CONTROL PLAN
 1" = 20'-0"



INTERIM REVIEW
 THESE DOCUMENTS ARE INTENDED FOR INTERIM REVIEW ONLY AND NOT FOR REGULATORY APPROVAL/POINTING OR CONSTRUCTION.
 REGISTERED LANDSCAPE ARCHITECT
 DOROTHY J. WINNEVER
 TEXAS REGISTRATION NUMBER 3159

N:\0046356.00\06 CAD\DWG\Landscape FX\Sheets\LAYOUT SHEETS.dwg, L2.01, 8/13/2024 2:19:42 PM, GAirroyo

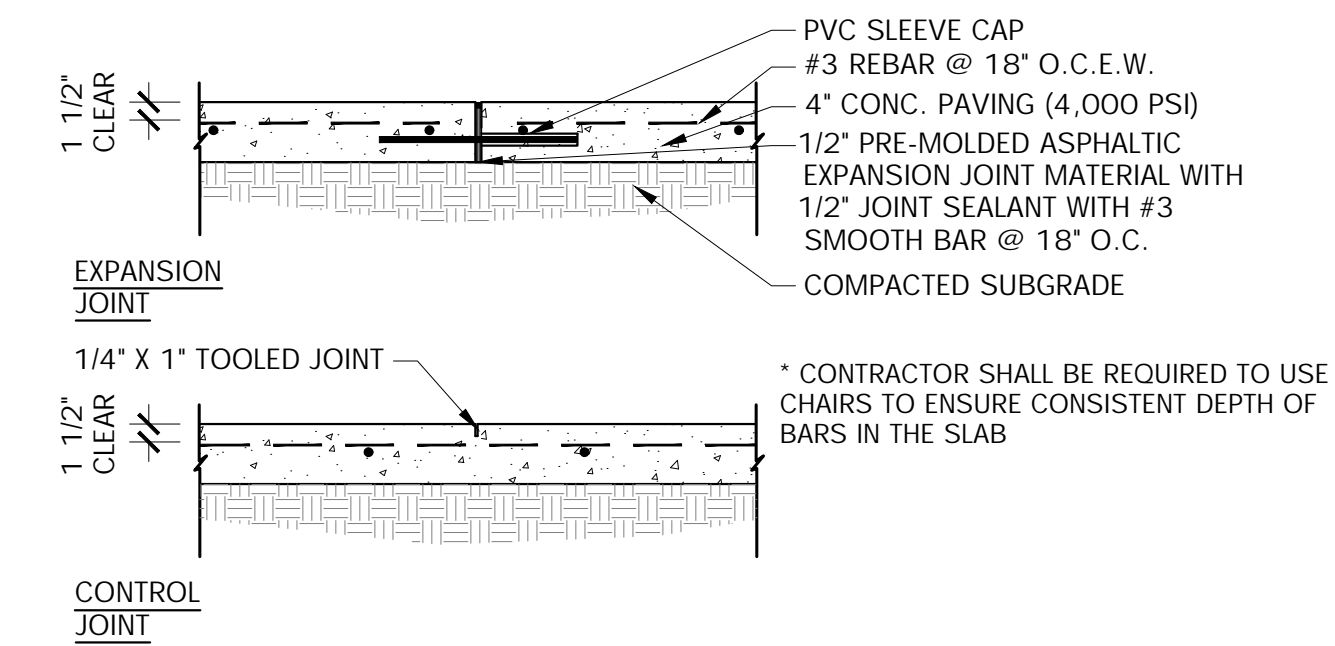
CITY HALL PARKING LOT

NOTE:

1. COMPACTED SUBGRADE - COMPACT TO 95% STANDARD PROCTOR DENSITY AT 0 TO +/- 2% OPTIMUM MOISTURE CONTENT AS PER ASTM D 698 (TYP.)
2. EXPANSION JOINTS & CONTROL JOINTS SHALL BE LOCATED ACCORDING TO THE FOLLOWING:
 - E.J: CHANGES IN DIRECTION, MAX 75' O.C., AGAINST CURBS, BUILDINGS, AND MANHOLES.
 - C.J: SPACED EVENLY TO PRODUCE SQUARE MODULES UP TO 8' O.C. MAX

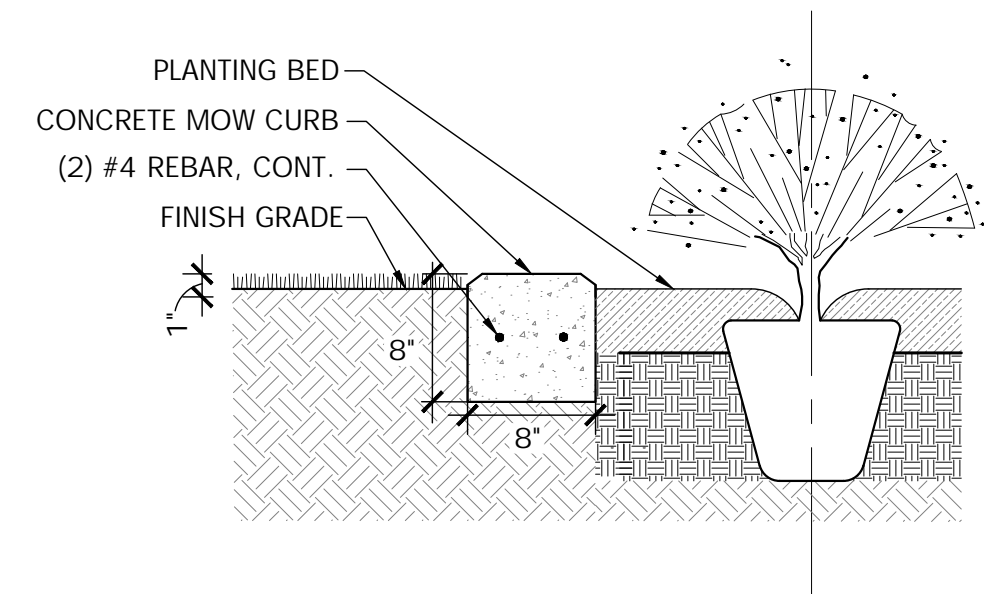
CONCRETE MIXTURE:

- COMPRESSIVE STRENGTH 28 DAYS, 4,000 PSI.
- MAXIMUM WATER-CEMENTITIOUS MATERIALS RATIO AT POINT OF PLACEMENT 0.45.
- SLUMP LIMIT: 5 INCHES PLUS OR MINUS 1 INCH
- AIR CONTENT: 5-1/2 PERCENT PLUS OR MINUS 1.5 PERCENT
- MEASURE, BATCH, AND MIX CONCRETE MATERIALS AND CONCRETE ACCORDING TO ASTM C 94/C 94M.
- MEDIUM BROOM FINISH, PROVIDE SAMPLES PER SPEC
- STAMPED & INTEGRAL COLOR PER PLANS AND SPECS



1 CONCRETE PAVING SECTION

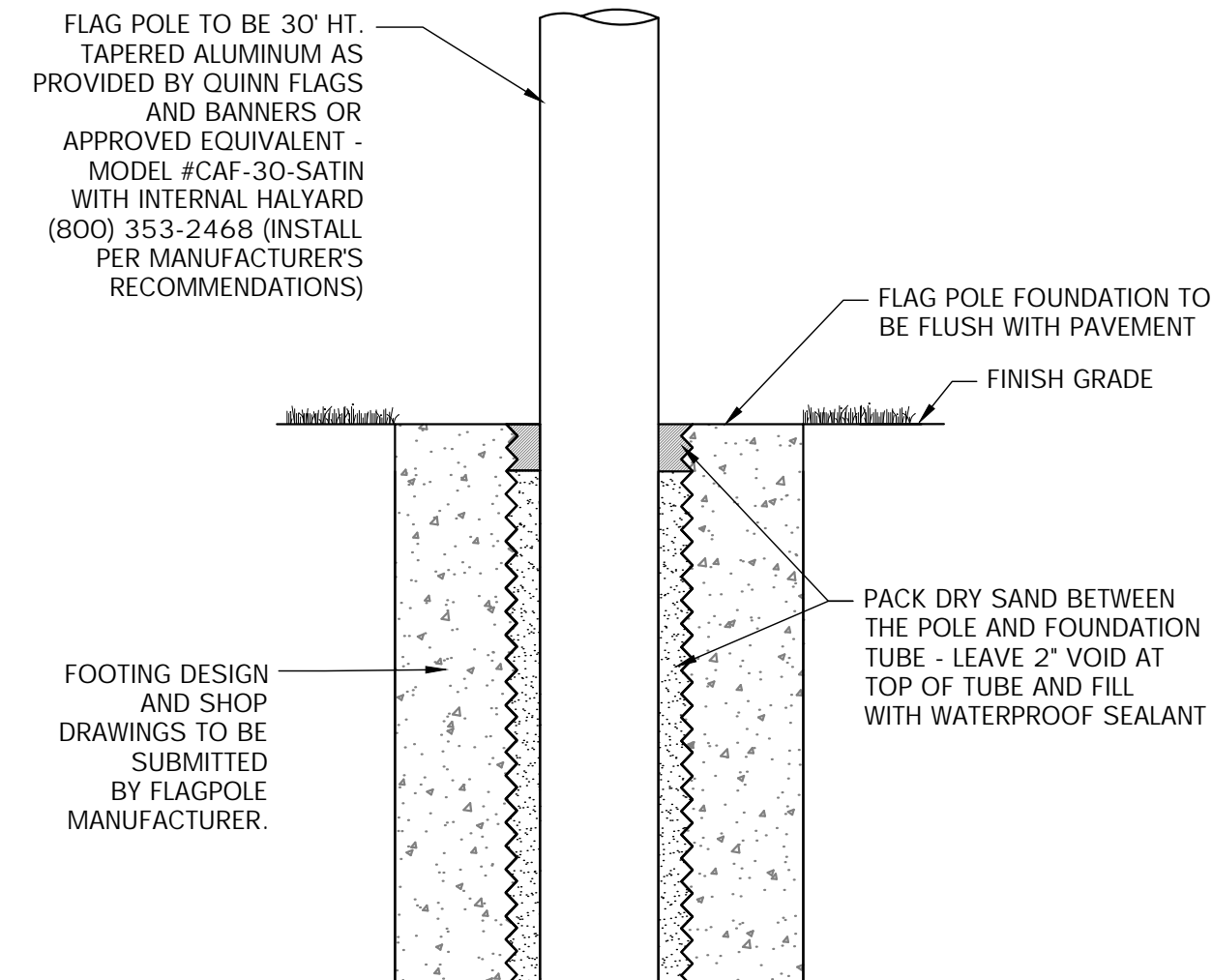
3/4" = 1'-0"



NOTE: CONTROL JOINTS @ 10' O.C.
SEALED EXPANSION JOINTS @ 30' O.C.

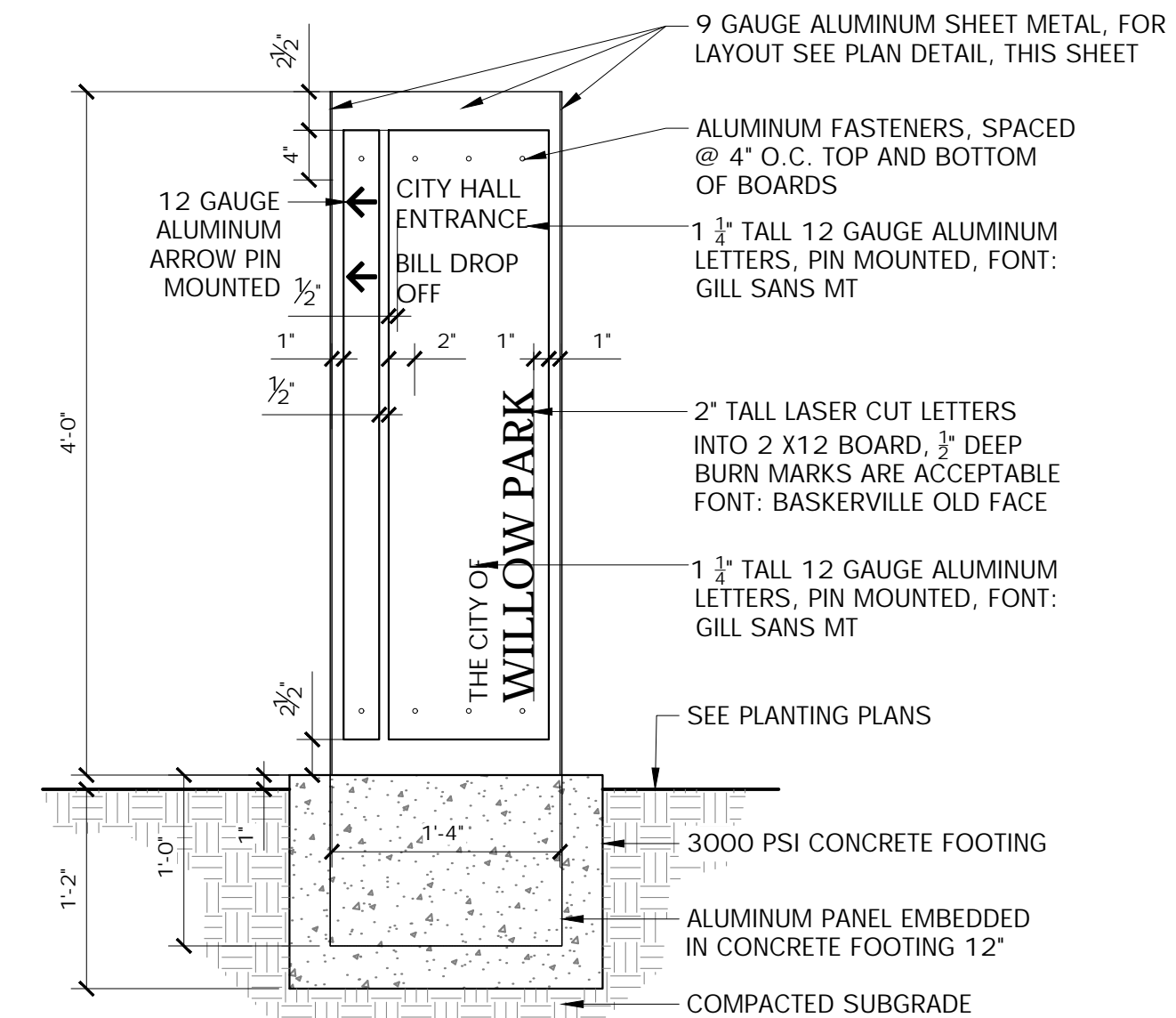
2 8" CONCRETE MOW CURB

1" = 1'-0"



3 FLAGPOLE BASE

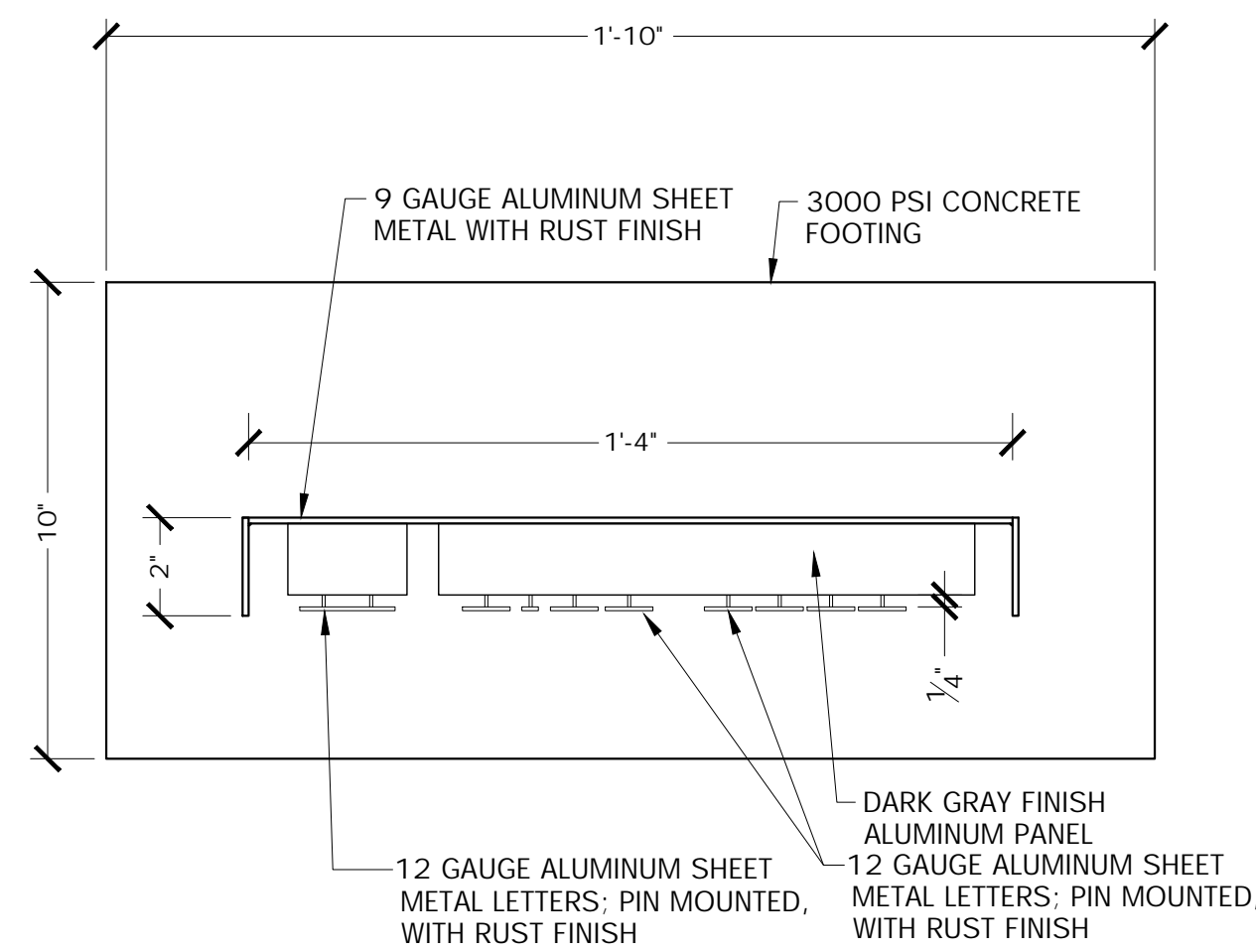
1 1/2" = 1'-0"



4 WAYFINDING SIGN

1" = 1'-0"

P-MU1-WIL3-03



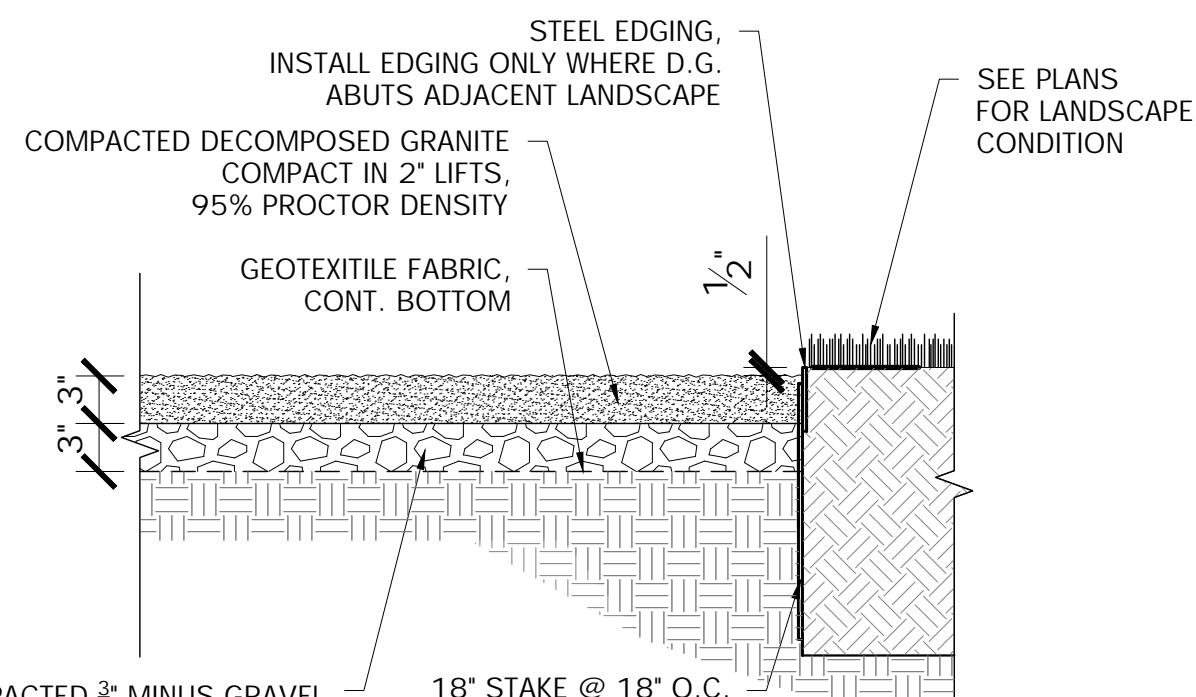
5 WAYFINDING SIGN PLAN DETAIL

3' = 1'-0"

P-MU1-WIL3-76

NOTE:

1. REFER TO HARDSCAPE SCHEDULE FOR PRODUCT COLOR AND FINISH



6 DECOMPOSED GRANITE

1" = 1'-0"

INTERIM REVIEW

THESE DOCUMENTS ARE INTENDED FOR INTERIM REVIEW ONLY AND NOT FOR REGULATORY APPROVAL, PERMITTING, OR CONSTRUCTION.

REGISTERED LANDSCAPE ARCHITECT
DOROTHY J. WINNEVER
TEXAS REGISTRATION NUMBER 3159

NO.	DATE	ISSUE

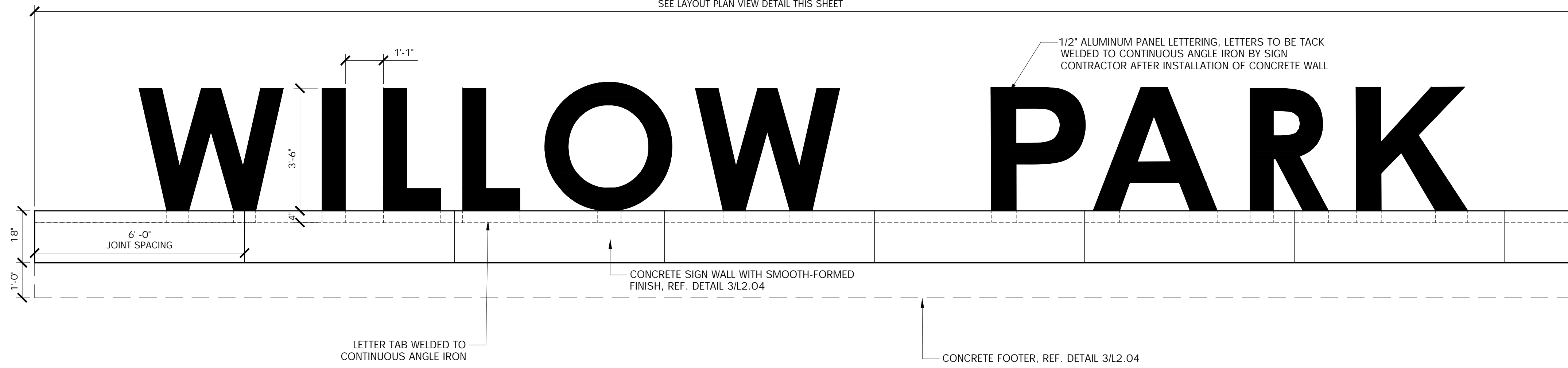
NO.	DATE	REVISION

Westwood 4060 BRYANT IRVIN ROAD
FORT WORTH, TX 76109 T:817.412.7155
Westwood Professional Services, Inc. www.westwoodgs.com
TBPELS ENGINEERING FIRM NO. 11756
TBPELS SURVEYING FIRM NO. 10074301

HARDSCAPE DETAILS						
PARKING LOT EXPANSION						
CITY HALL						
120 EL CHICO TRAIL, SUITE A						
CITY OF WILLOW PARK, PARKER COUNTY, TEXAS						
DESIGN	DRAWN	DATE	SCALE	NOTES	FILE	NO.
DJW	GA	AUG 2024	AS SHOWN			L2.02

WW FILE: 0046356.00

SEE LAYOUT PLAN VIEW DETAIL THIS SHEET



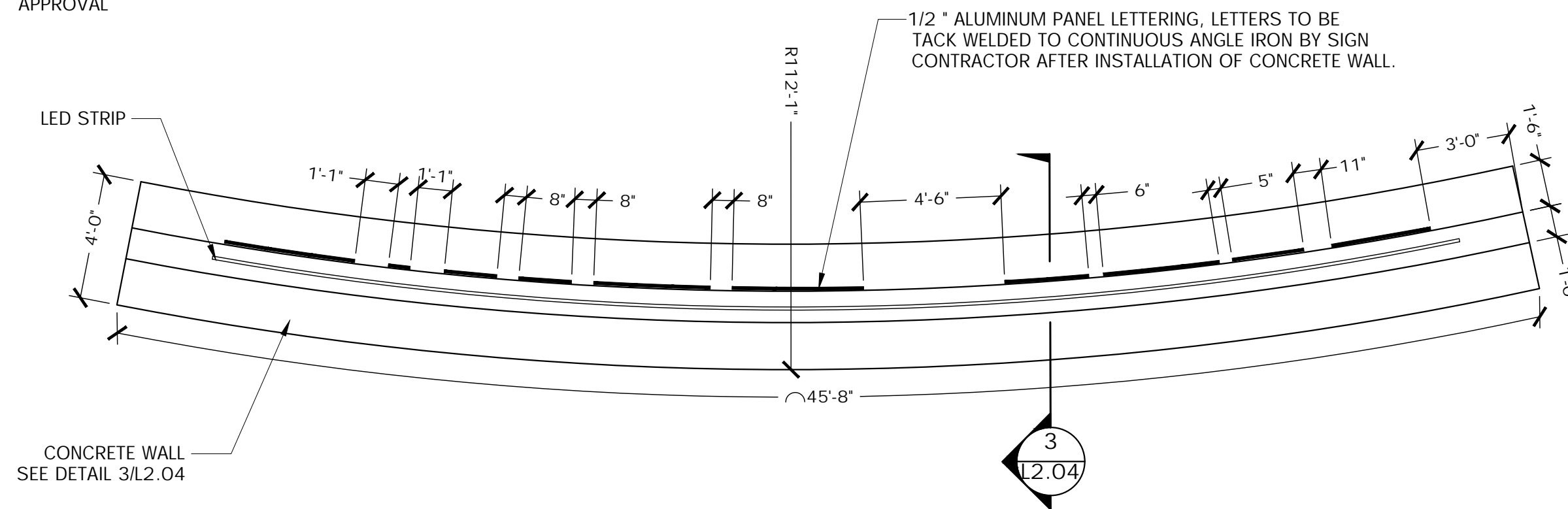
1 'WILLOW PARK' SIGN ON WALL - ELEVATION

1/2" = 1'-0"

P-MU1-WIL3-04

NOTES:

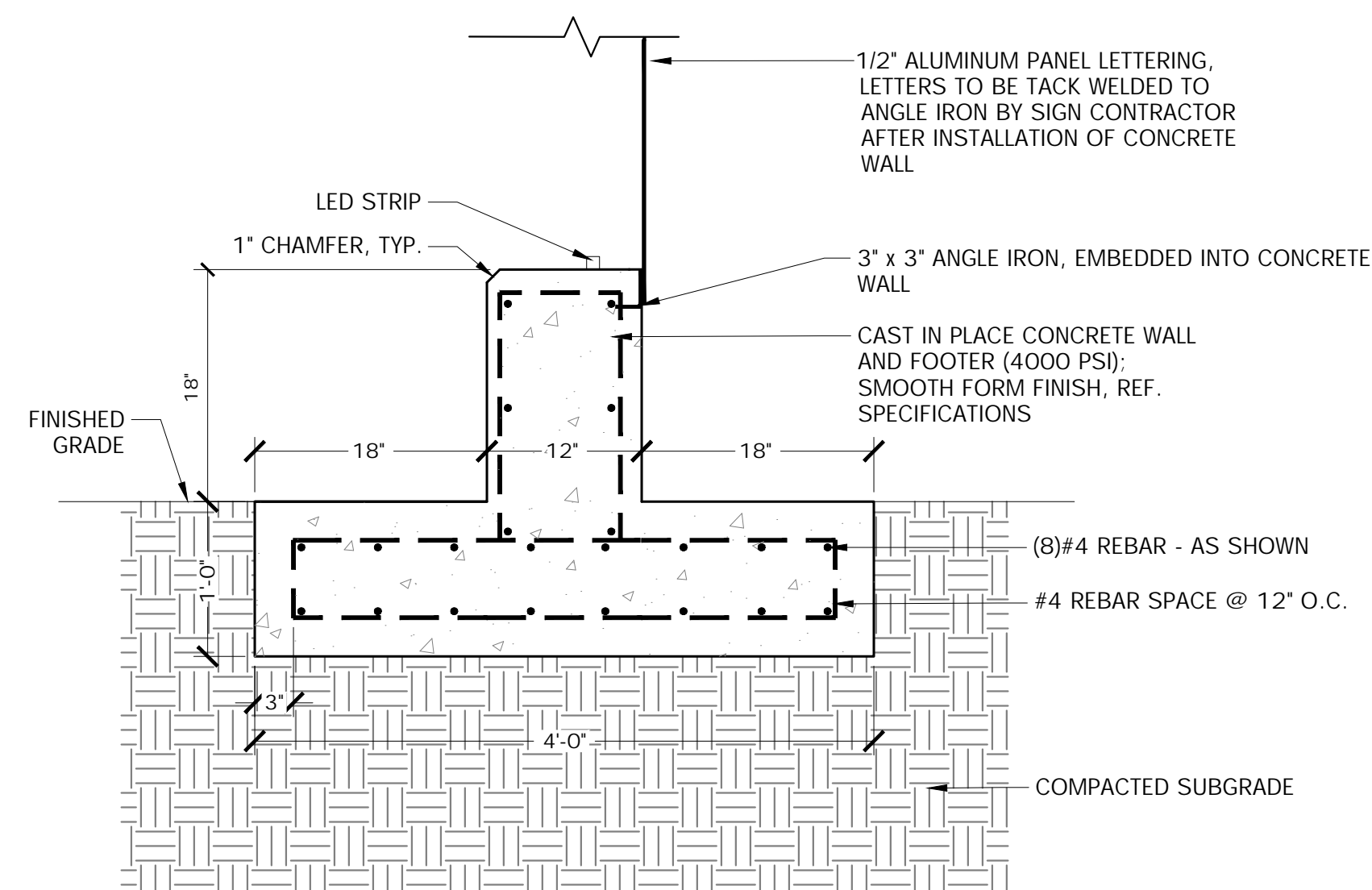
- 1/2" LETTERS TO BE FABRICATED AND INSTALLED BY SIGN CONTRACTOR.
- SEE DIMENSIONAL CONTROL PLANS FOR SIGN N/E POINTS AND TABLES.
- CONTRACTOR TO PROVIDE SHOP DRAWINGS FOR APPROVAL



2 'WILLOW PARK' SIGN ON WALL PLAN VIEW

1/4" = 1'-0"

P-MU1-WIL3-10



3 WILLOW PARK SIGN WALL AND FOUNDATION

1" = 1'-0"

P-MU1-WIL3-05

INTERIM REVIEW
 THESE DOCUMENTS ARE INTENDED FOR INTERIM REVIEW ONLY AND NOT FOR REGULATORY APPROVAL/PERMITTING OR CONSTRUCTION.
 REGISTERED LANDSCAPE ARCHITECT
 DOROTHY J. WINNEVER
 TEXAS REGISTRATION NUMBER 3159

NO.	DATE	ISSUE
NO.	DATE	REVISION

Westwood
 Westwood Professional Services, Inc.
 4060 BRYANT IRVIN ROAD
 FORT WORTH, TX 76109 T:817.412.7155
 TBPELS ENGINEERING FIRM NO. 11756
 TBPELS SURVEYING FIRM NO. 10074301

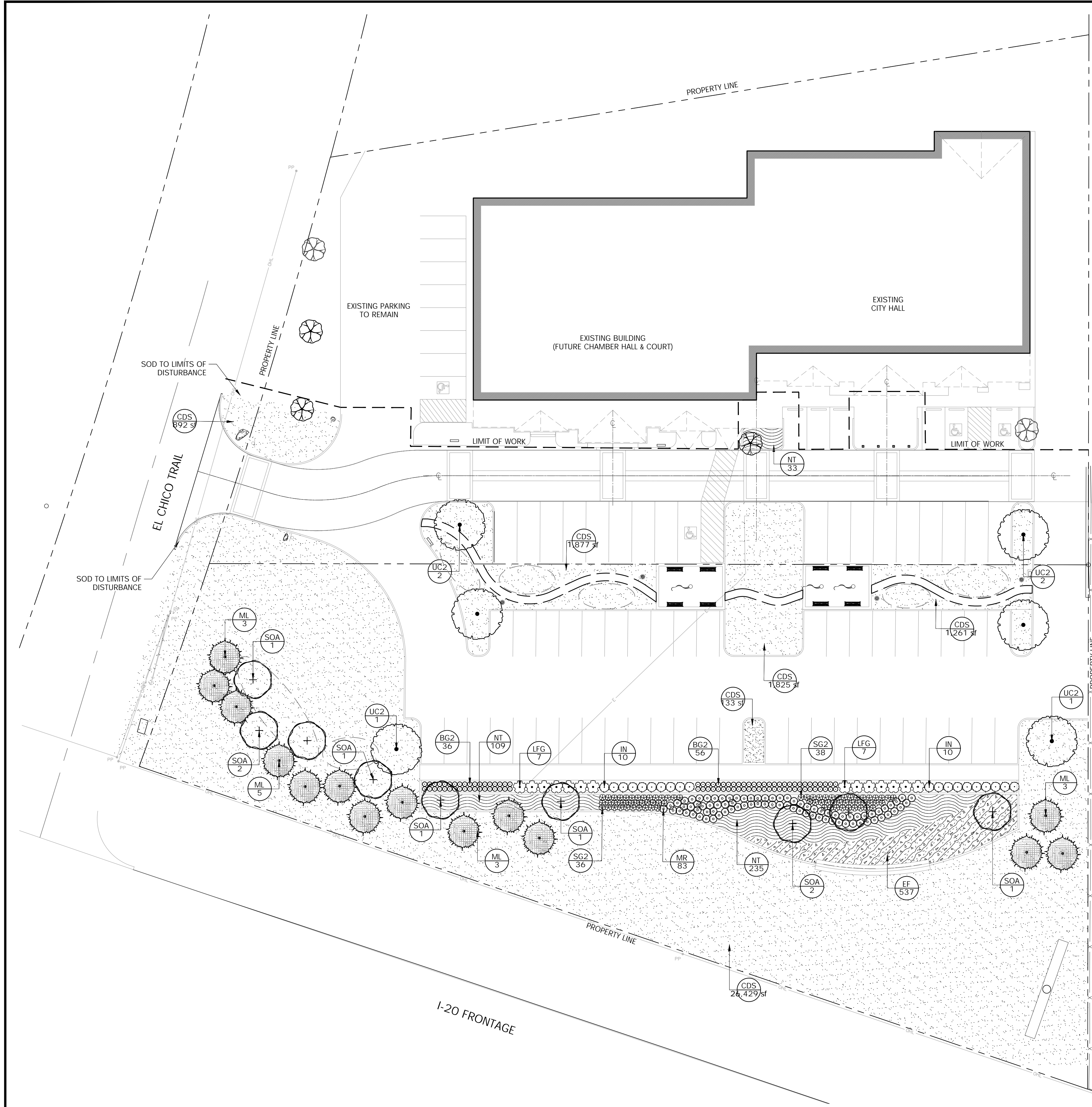
HARDSCAPE DETAILS						
PARKING LOT EXPANSION						
CITY HALL						
120 EL CHICO TRAIL, SUITE A						
CITY OF WILLOW PARK, PARKER COUNTY, TEXAS						
DESIGN	DRAWN	DATE	SCALE	NOTES	FILE	NO.
DJW	GA	AUG 2024	AS SHOWN			L2.03

WW FILE: 0046356.00

N:\0046356.00\06 CAD\DWG\Landscapes FX\Sheets\LAYOUT SHEETS.dwg, L2.03, 8/13/2024 2:19:44 PM, GAirroyo

CITY HALL PARKING LOT

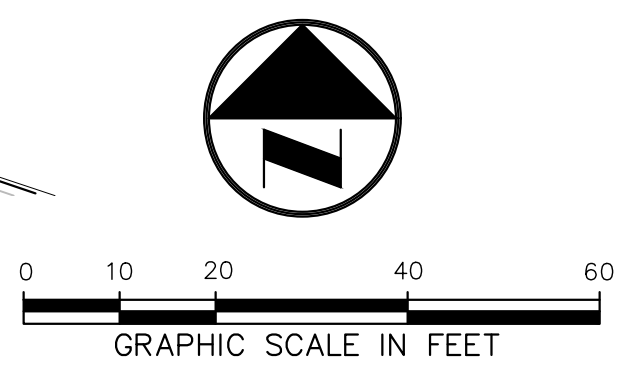
N:\0046356.00\06 CAD\DWG\Landscaping FX\Sheets\PLANTING SHEETS.dwg, LO.00, 8/13/2024 2:19:53 PM, GAirroyo



PLANT SCHEDULE

SYMBOL	CODE	QTY	BOTANICAL / COMMON NAME	SIZE/COND.	REMARKS
TREES					
	UC2	6	ULMUS CRASSIFOLIA CEDAR ELM	3" CAL. / CONT.	MATCHED, WELL BRANCHED, STRONG CENTRAL LEADER
ORNAMENTAL TREES					
	SOA	9	SOPHORA AFFINIS EVE'S NECKLACE	60 GAL	SINGLE, STRAIGHT LEADER, MATCHING
EVERGREEN TREES					
	ML	14	MAGNOLIA GRANDIFLORA 'LITTLE GEM' DWARF SOUTHERN MAGNOLIA	60 GAL	SINGLE, STRAIGHT LEADER, MATCHING
SHRUBS					
	IN	20	ILEX VOMITORIA 'NANA' DWARF YAUPON	5 GAL	48" o.c. FULL, MATCHING
	LFG	14	LEUCOPHYLLUM FRUTESCENS 'GREEN CLOUD' TM GREEN CLOUD TEXAS RANGER	5 GAL	60" o.c. FULL, MATCHING
	SG2	74	SALVIA GREGGII AUTUMN SAGE	5 GAL	30" o.c. FULL, MATCHING
ORNAMENTAL GRASSES					
	BG2	92	BOUTELLOUA GRACILIS BLUE GRAMA GRASS	1 GAL	24" o.c. NURSERY GROWN, MATCHED & WELL ROOTED, PLANT AS SHOWN
	MR	83	MUHLENBERGIA CAPILLARIS 'REGAL MIST' TM PINK MUHLY	3 GAL	36" o.c. NURSERY GROWN, MATCHED & WELL ROOTED, PLANT AS SHOWN
GROUND COVERS					
	EF	537	EUONYMUS FORTUNEI 'COLORATUS' PURPLE WINTERCREEPER	1 GAL	18" o.c. FULL, MATCHING
	NT	377	NASSELLA TENUISSIMA MEXICAN FEATHER GRASS	1 GAL	24" o.c. FULL, MATCHING
SOD					
	CDS	32,417 SF	CYNODON DACTYLON BERMUDA GRASS	SOD	SOLID, ROLLED TIGHT, SAND FILLED JOINTS, 100% WEED, PEST AND DISEASE FREE

1 PLANTING PLAN
1" = 20'-0"



INTERIM REVIEW
THESE DOCUMENTS ARE INTENDED FOR INTERIM REVIEW ONLY AND NOT FOR REGULATORY APPROVAL, PERMITTING, OR CONSTRUCTION.
REGISTERED LANDSCAPE ARCHITECT
DOROTHY J. WINNEVER
TEXAS REGISTRATION NUMBER 3159

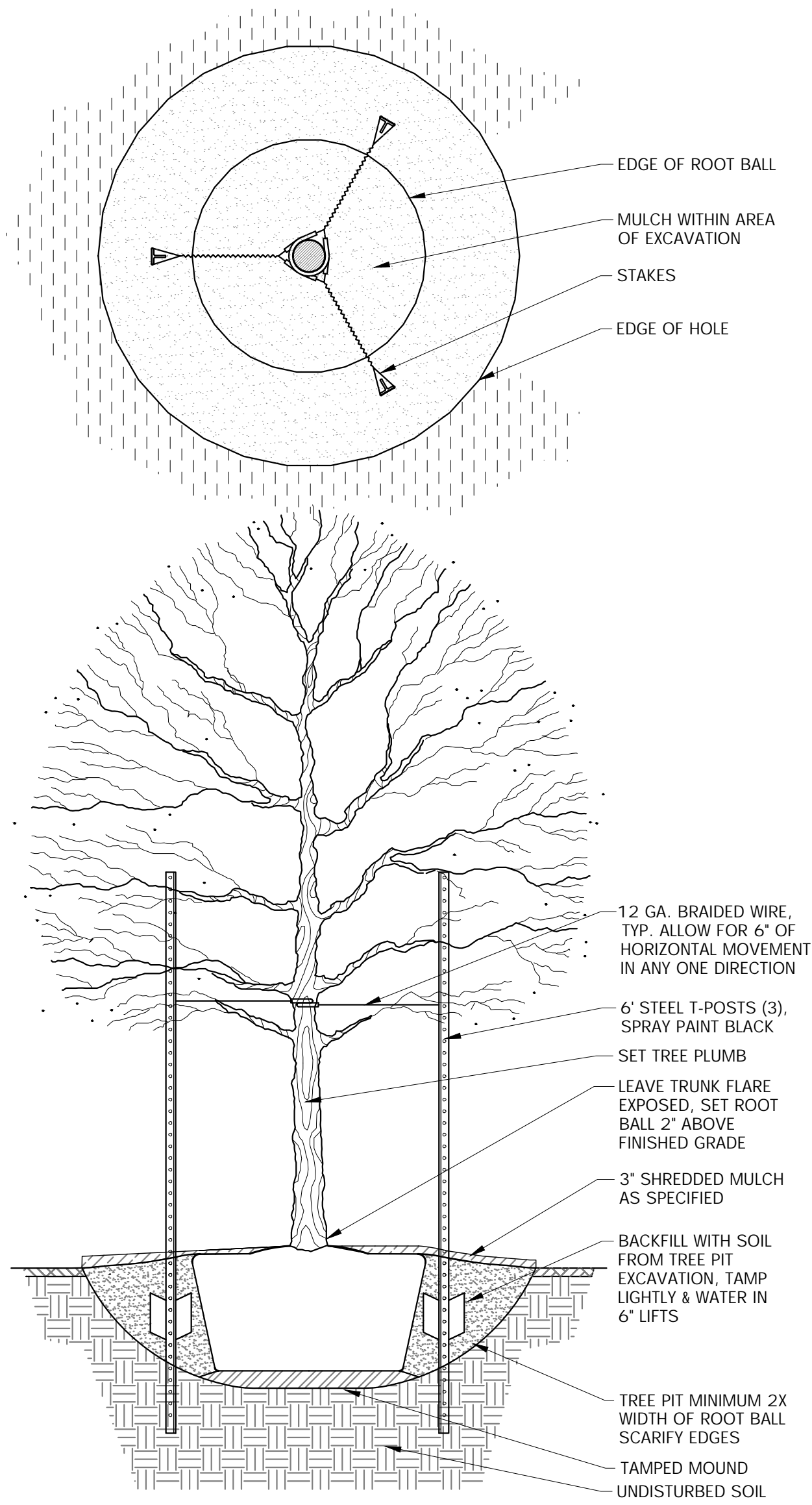
NO.	DATE	ISSUE
NO.	DATE	REVISION

Westwood 4060 BRYANT IRVIN ROAD
FORT WORTH, TX 76109 T:817.412.7155
Westwood Professional Services, Inc. www.westwoodps.com
TBP/ELS ENGINEERING FIRM NO. 11756
TBP/ELS SURVEYING FIRM NO. 10074301

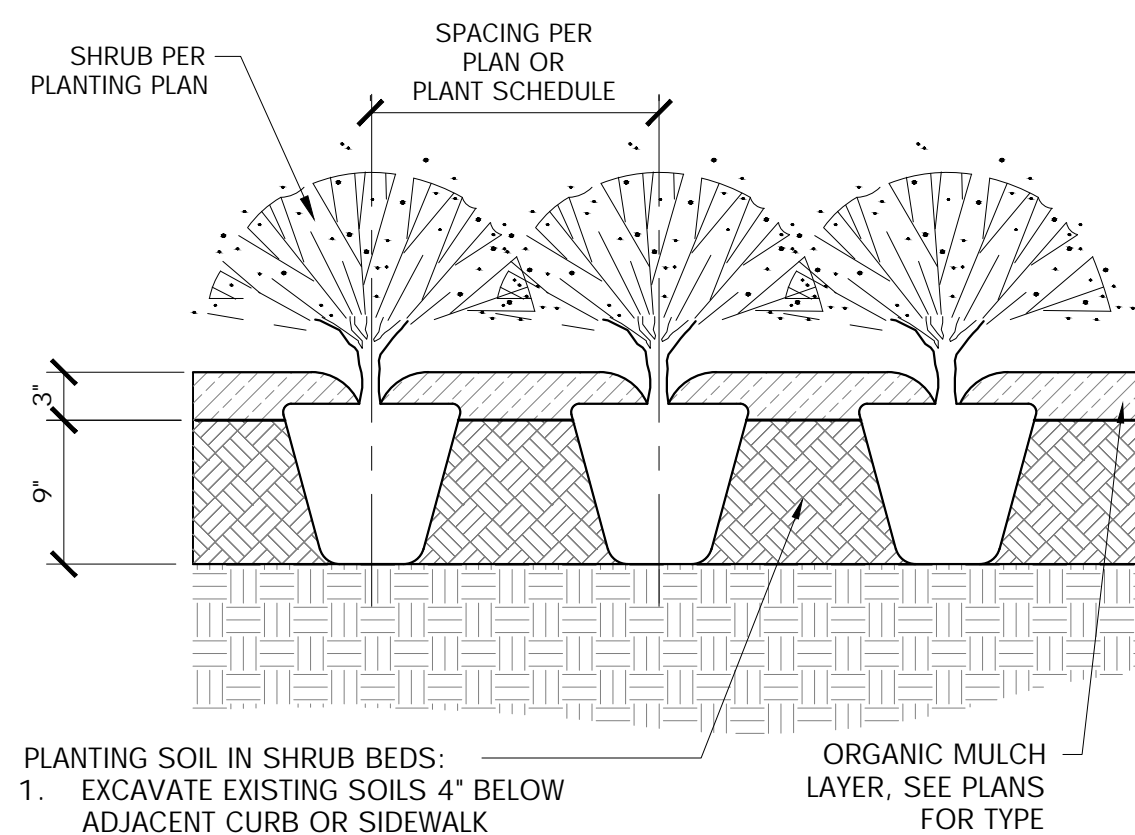
PLANTING PLAN
PARKING LOT EXPANSION
CITY HALL
120 EL CHICO TRAIL, SUITE A
CITY OF WILLOW PARK, PARKER COUNTY, TEXAS

DESIGN	DRAWN	DATE	SCALE	NOTES	FILE	NO.
DJW	GA	AUG 2024	AS SHOWN			L1.00

CITY HALL PARKING LOT

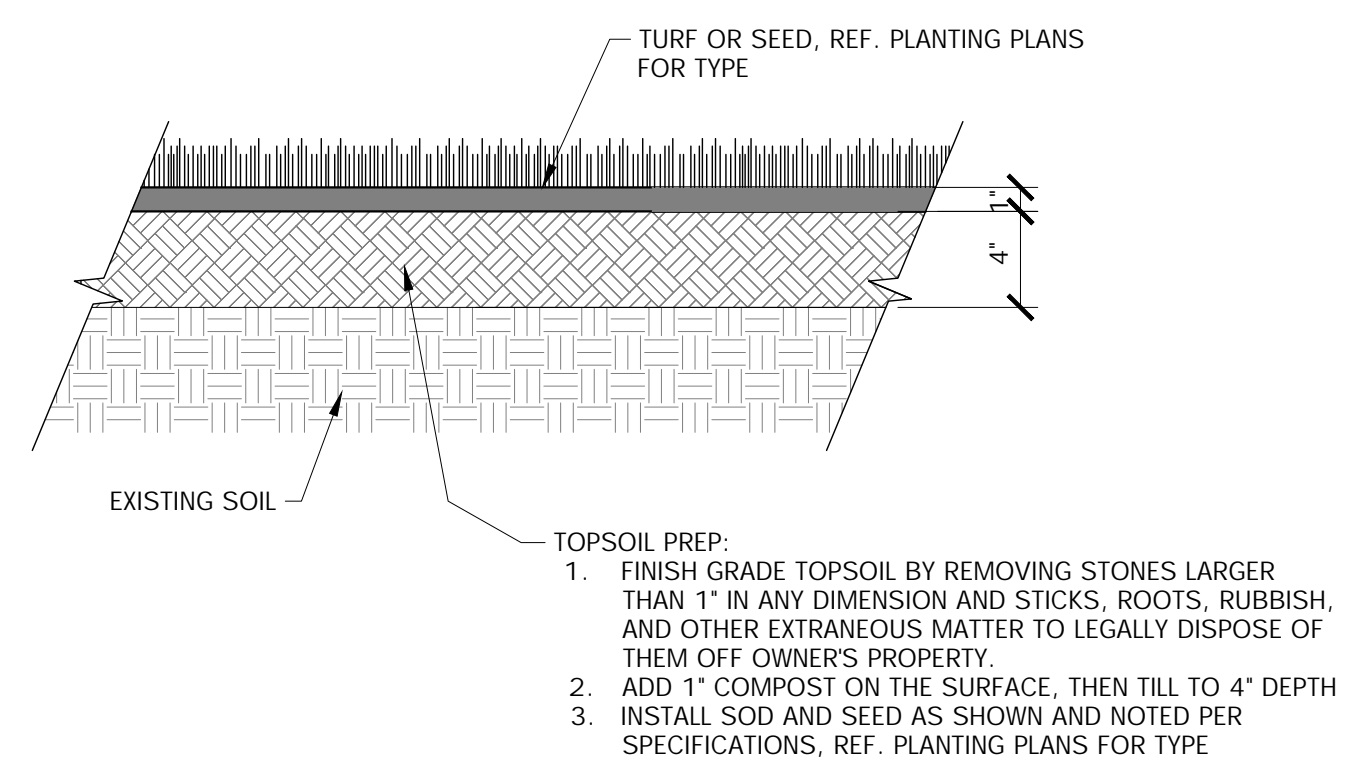


1 CANOPY TREE PLANTING
3/4" = 1'-0"



PLANTING SOIL IN SHRUB BEDS:
 1. EXCAVATE EXISTING SOILS 4" BELOW ADJACENT CURB OR SIDEWALK
 2. ADD 3" COMPOST & TILL INTO 6" EXISTING SOILS, CREATING 9" PLANTING SOIL
 3. ADD 3" DARK BROWN FINE-SHREDDED HARDWOOD ORGANIC MULCH AFTER PLANTING

2 TYP. SHRUB PLANTING
1" = 1'-0"



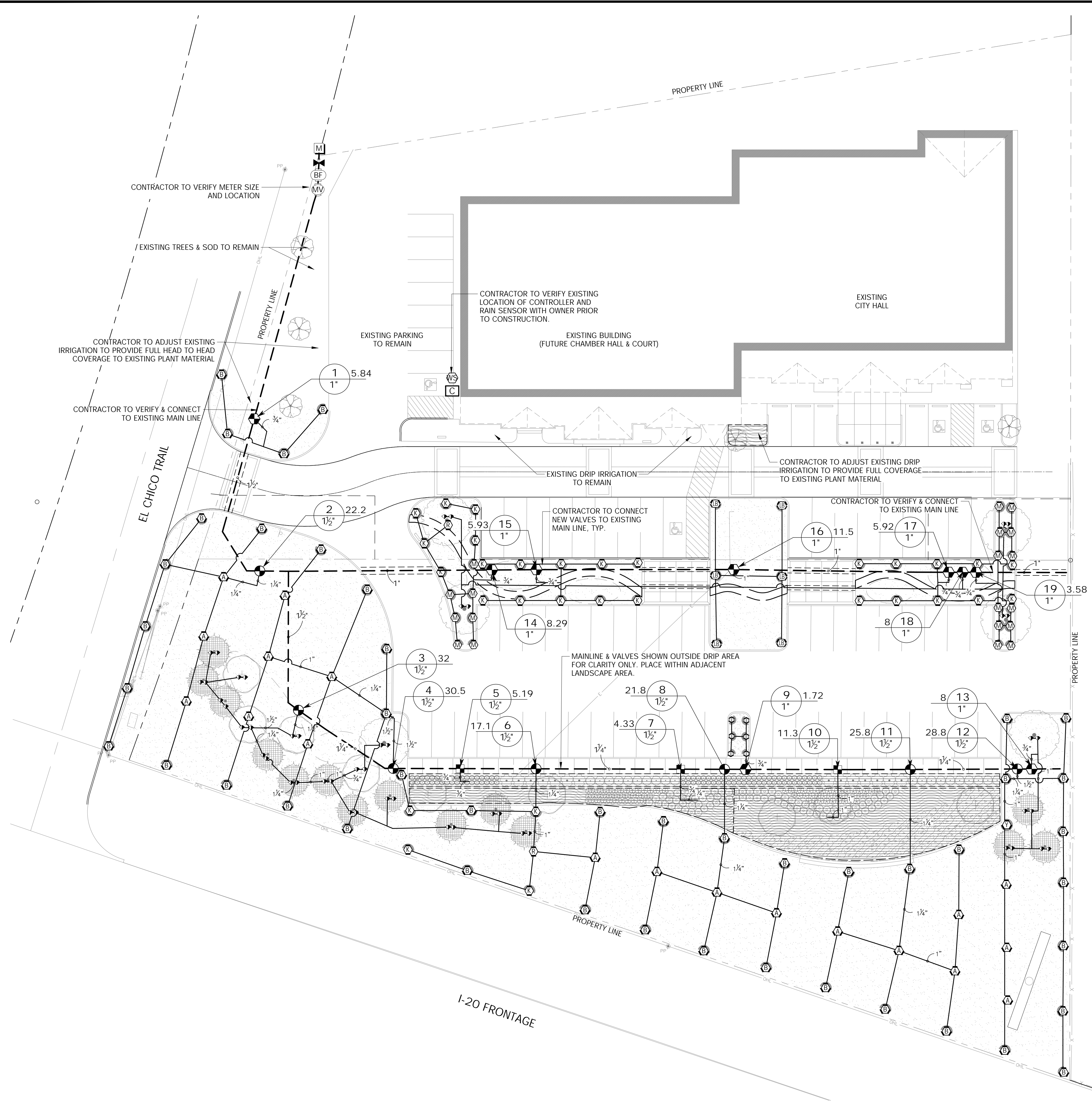
TOPSOIL PREP:
 1. FINISH GRADE TOPSOIL BY REMOVING STONES LARGER THAN 1" IN ANY DIMENSION AND STICKS, ROOTS, RUBBISH, AND OTHER EXTRANEIOUS MATTER TO LEGALLY DISPOSE OF THEM OFF OWNER'S PROPERTY.
 2. ADD 1" COMPOST ON THE SURFACE, THEN TILL TO 4" DEPTH
 3. INSTALL SOD AND SEED AS SHOWN AND NOTED PER SPECIFICATIONS, REF. PLANTING PLANS FOR TYPE

3 SOIL PROFILE FOR SOD & SEED
1 1/2" = 1'-0"

INTERIM REVIEW
 THESE DOCUMENTS ARE INTENDED FOR INTERIM REVIEW ONLY AND NOT FOR REGULATORY APPROVAL/PERMITTING OR CONSTRUCTION.
 REGISTERED LANDSCAPE ARCHITECT
 DOROTHY J. WINNEVER
 TEXAS REGISTRATION NUMBER 3159

NO.	DATE	ISSUE				
NO.	DATE	REVISION				
Westwood <small>Westwood Professional Services, Inc.</small>						
<small>4060 BRYANT IRVIN ROAD FORT WORTH, TX 76109 T:817.412.7155 TBP/ELS ENGINEERING FIRM NO. 11756 TBP/ELS SURVEYING FIRM NO. 10074301</small>						
PLANTING DETAILS PARKING LOT EXPANSION CITY HALL 120 EL CHICO TRAIL, SUITE A CITY OF WILLOW PARK, PARKER COUNTY, TEXAS						
DESIGN	DRAWN	DATE	SCALE	NOTES	FILE	NO.
DJW	GA	AUG 2024	AS SHOWN			L1.00

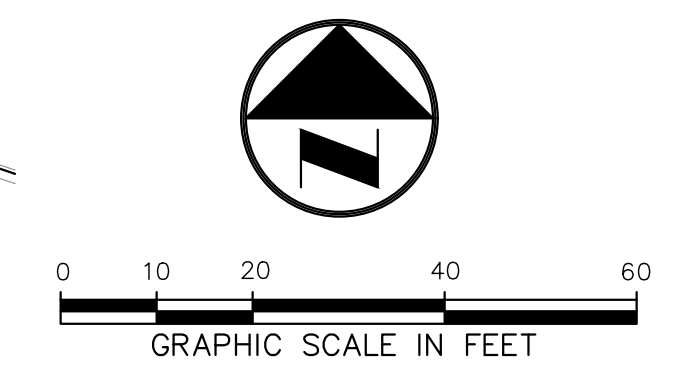
N:\0046356\0006 CAD\DWG\Landscape FX\Sheets\IRRIGATION SHEETS.dwg, LO.00, 8/13/2024 2:20:06 PM, GArroyo



IRRIGATION SCHEDULE

SYMBOL	MANUFACTURER/MODEL/DESCRIPTION
	HUNTER MP1000 PROS-04-PRS40-CV TURF ROTATOR, 4IN. POP-UP WITH CHECK VALVE, PRESSURE REGULATED TO 40 PSI, MP ROTATOR NOZZLE ON PRS40 BODY. M=MAROON ADJ ARC 90 TO 210, L=LIGHT BLUE 210 TO 270 ARC, O=OLIVE 360 ARC.
	HUNTER MP2000 PROS-04-PRS40-CV TURF ROTATOR, 4IN. POP-UP WITH FACTORY INSTALLED CHECK VALVE, PRESSURE REGULATED TO 40 PSI, MP ROTATOR NOZZLE ON PRS40 BODY. K=BLACK ADJ ARC 90-210, G=GREEN ADJ ARC 210-270, R=RED 360 ARC.
	HUNTER MP3000 PROS-04-PRS40-CV TURF ROTATOR, 4IN. POP-UP WITH FACTORY INSTALLED CHECK VALVE, PRESSURE REGULATED TO 40 PSI, MP ROTATOR NOZZLE ON PRS40 BODY. B=BLUE ADJ ARC 90-210, Y=YELLOW ADJ ARC 210-270, A=GRAY 360 ARC.
	HUNTER MP3500 PROS-04-PRS40-CV TURF ROTATOR, 4IN. POP-UP WITH FACTORY INSTALLED CHECK VALVE, PRESSURE REGULATED TO 40 PSI, MP ROTATOR NOZZLE ON PRS40 BODY. LB=LIGHT BROWN ADJUSTABLE ARC, 90-210.
	HUNTER MP800SR PROS-04-PRS40-CV TURF ROTATOR, 4IN. POP-UP WITH CHECK VALVE, PRESSURE REGULATED TO 40 PSI, MP ROTATOR NOZZLE ON PRS40 BODY. ADJ=ORANGE AND GRAY (ARC 90-210), 360=LIME GREEN AND GRAY (ARC 360)
	HUNTER PROS-PRS30-04-CV-PCN FLOOD BUBBLER, 4IN. POP-UP, FACTORY INSTALLED DRAIN CHECK VALVE.
SYMBOL	MANUFACTURER/MODEL/DESCRIPTION
	HUNTER ICZ-151-XL-40 DRIP CONTROL ZONE KIT. 1-1/2IN. ICV GLOBE VALVE WITH 1IN. HY100 FILTER SYSTEM. PRESSURE REGULATION: 40PSI. FLOW RANGE: 20 GPM TO 60 GPM. 120 MESH STAINLESS STEEL SCREEN. 1-1/2IN. INLET X SINGLE 2IN. OUTLET
	AREA TO RECEIVE DRIPLINE HUNTER HDL-06-18-CV HDL-06-18-CV: HUNTER DRIPLINE W/ 0.6 GPH EMITTERS AT 18" O.C. CHECK VALVE, DARK BROWN TUBING WITH GRAY STRIPING. DRIPLINE LATERALS SPACED AT 18" APART, WITH EMITTERS OFFSET FOR TRIANGULAR PATTERN. INSTALL WITH HUNTER PLD BARBED OR PLD-LOC FITTINGS.
SYMBOL	MANUFACTURER/MODEL/DESCRIPTION
	HUNTER PGV-101G 1IN. PLASTIC ELECTRIC REMOTE CONTROL VALVE, FOR RESIDENTIAL/LIGHT COMMERCIAL USE. FEMALE NPT INLET/OUTLET. GLOBE CONFIGURATION, WITH FLOW CONTROL.
	HUNTER PGV-151 GLOBE 1-1/2IN. PLASTIC ELECTRIC REMOTE CONTROL VALVE, FOR RESIDENTIAL/LIGHT COMMERCIAL USE. FEMALE NPT INLET/OUTLET, WITH FLOW CONTROL. GLOBE CONFIGURATION.
	NIBCO T-113 CLASS 125 BRONZE GATE SHUT OFF VALVE WITH WHEEL HANDLE, SAME SIZE AS MAINLINE PIPE DIAMETER AT VALVE LOCATION.
	HUNTER ICV-G 1" 1IN., 1-1/2IN., 2IN., AND 3IN. PLASTIC ELECTRIC MASTER VALVE, GLOBE CONFIGURATION, WITH NPT THREADED INLET/OUTLET, FOR COMMERCIAL/MUNICIPAL USE.
	FBECO 850 1" EXISTING BACKFLOW PREVENTER
	HUNTER P2C-400 EXISTING CONTROLLER
	HUNTER WSS EXISTING RAIN/FREEZE SENSOR
	WATER METER 1" EXISTING 1" WATER METER
	IRRIGATION LATERAL LINE: PVC CLASS 200 SDR 21 ONLY LATERAL TRANSITION PIPE SIZES 1" AND ABOVE ARE INDICATED ON THE PLAN, WITH ALL OTHERS BEING 3/4" IN SIZE.
	IRRIGATION MAINLINE: PVC CLASS 200 SDR 21
	PIPE SLEEVE: PVC CLASS 200 SDR 21 2 SIZES LARGER THAN PIPE WITHIN.
	Valve Callout # # Valve Number # # Valve Flow # # Valve Size

1 IRRIGATION PLAN
1" = 20'-0"

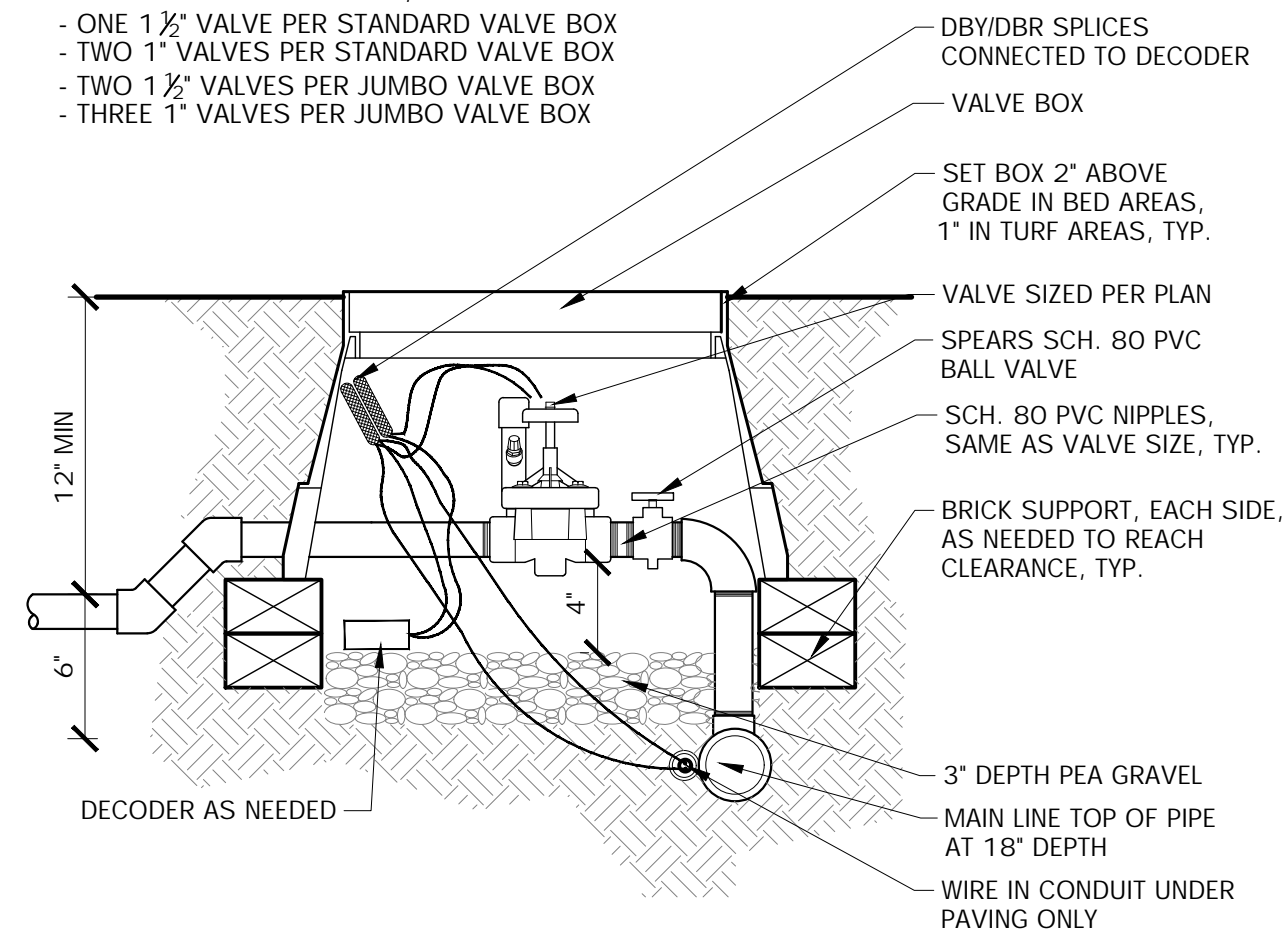


INTERIM REVIEW
THESE DOCUMENTS ARE INTENDED FOR INTERIM REVIEW ONLY AND NOT FOR REGULATORY APPROVAL, PERMITTING, OR CONSTRUCTION.
REGISTERED LANDSCAPE ARCHITECT
DOROTHY J. WINNEVER
TEXAS REGISTRATION NUMBER 3159

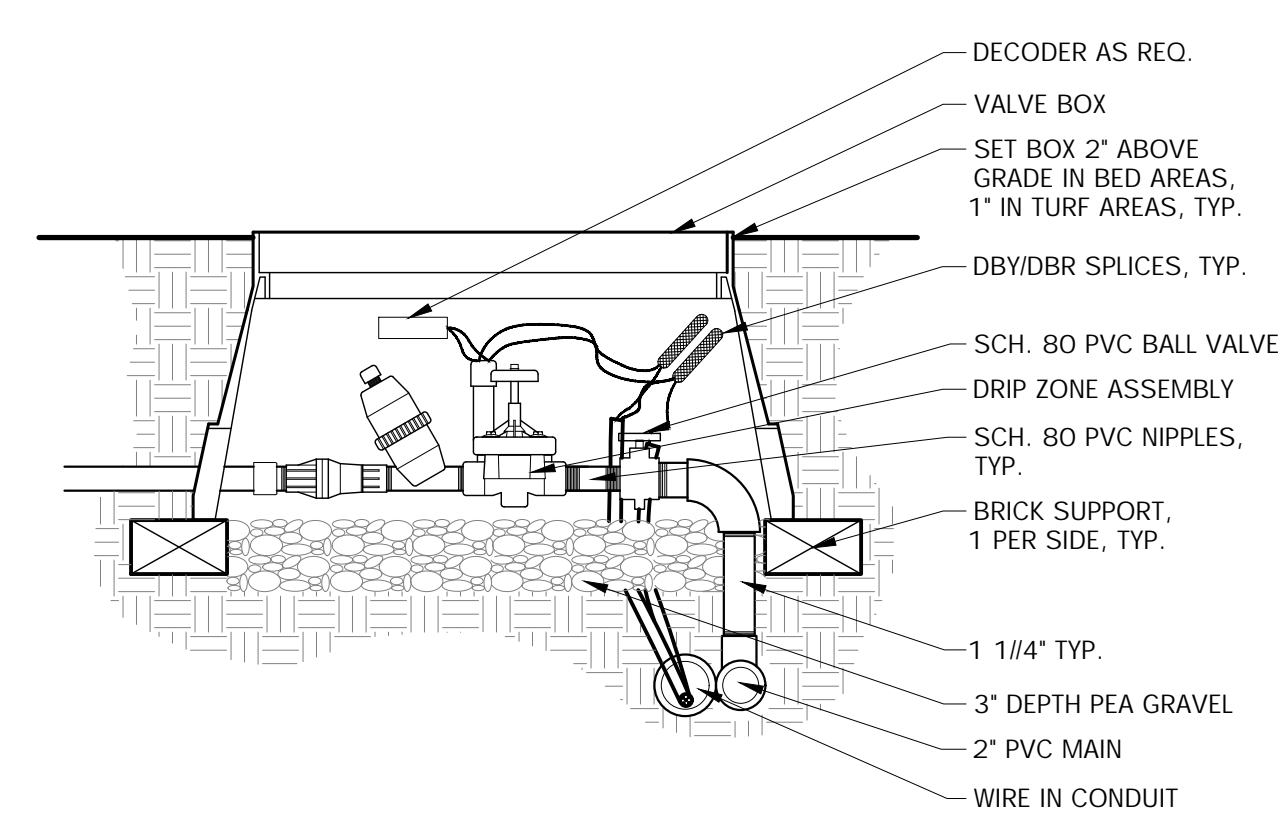
NO.	DATE	ISSUE				
NO.	DATE	REVISION				
Westwood 4060 BRYANT IRVIN ROAD FORT WORTH, TX 76109 T:817.412.7155 Westwood Professional Services, Inc. www.westwoodgs.com FBPELS ENGINEERING FIRM NO. 11756 FBPELS SURVEYING FIRM NO. 10074301						
IRRIGATION PLAN						
PARKING LOT EXPANSION						
CITY HALL						
120 EL CHICO TRAIL, SUITE A						
CITY OF WILLOW PARK, PARKER COUNTY, TEXAS						
DESIGN	DRAWN	DATE	SCALE	NOTES	FILE	NO.
DJW	GA	AUG 2024	AS SHOWN			L4.00

CITY HALL PARKING LOT

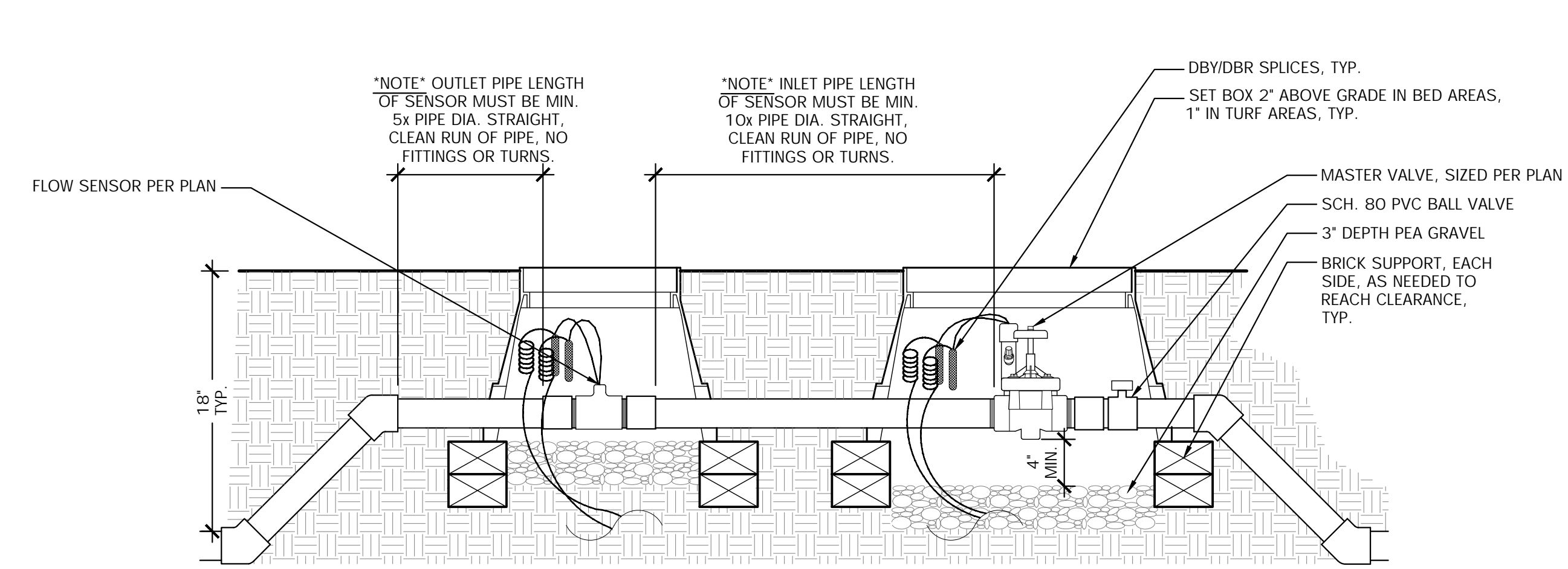
*VALVE/BOX REQUIREMENTS, MAX. MANIFOLDING:
 - ONE 1 1/2" VALVE PER STANDARD VALVE BOX
 - TWO 1" VALVES PER STANDARD VALVE BOX
 - TWO 1 1/2" VALVES PER JUMBO VALVE BOX
 - THREE 1" VALVES PER JUMBO VALVE BOX



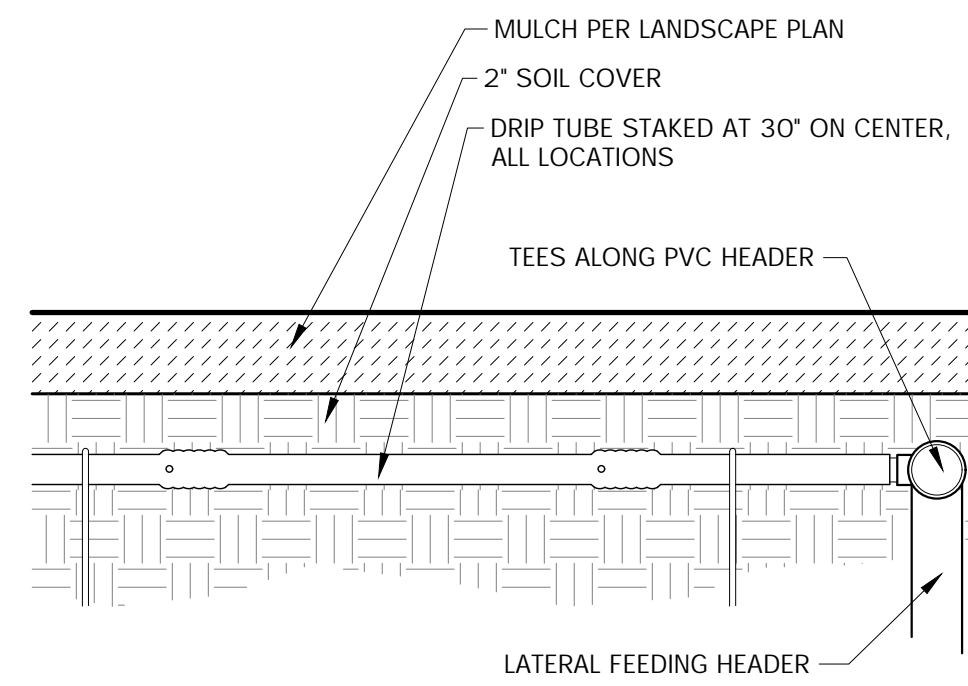
1 AUTOMATIC SYSTEM VALVE WITH DECODER
 1 1/2" = 1'-0"



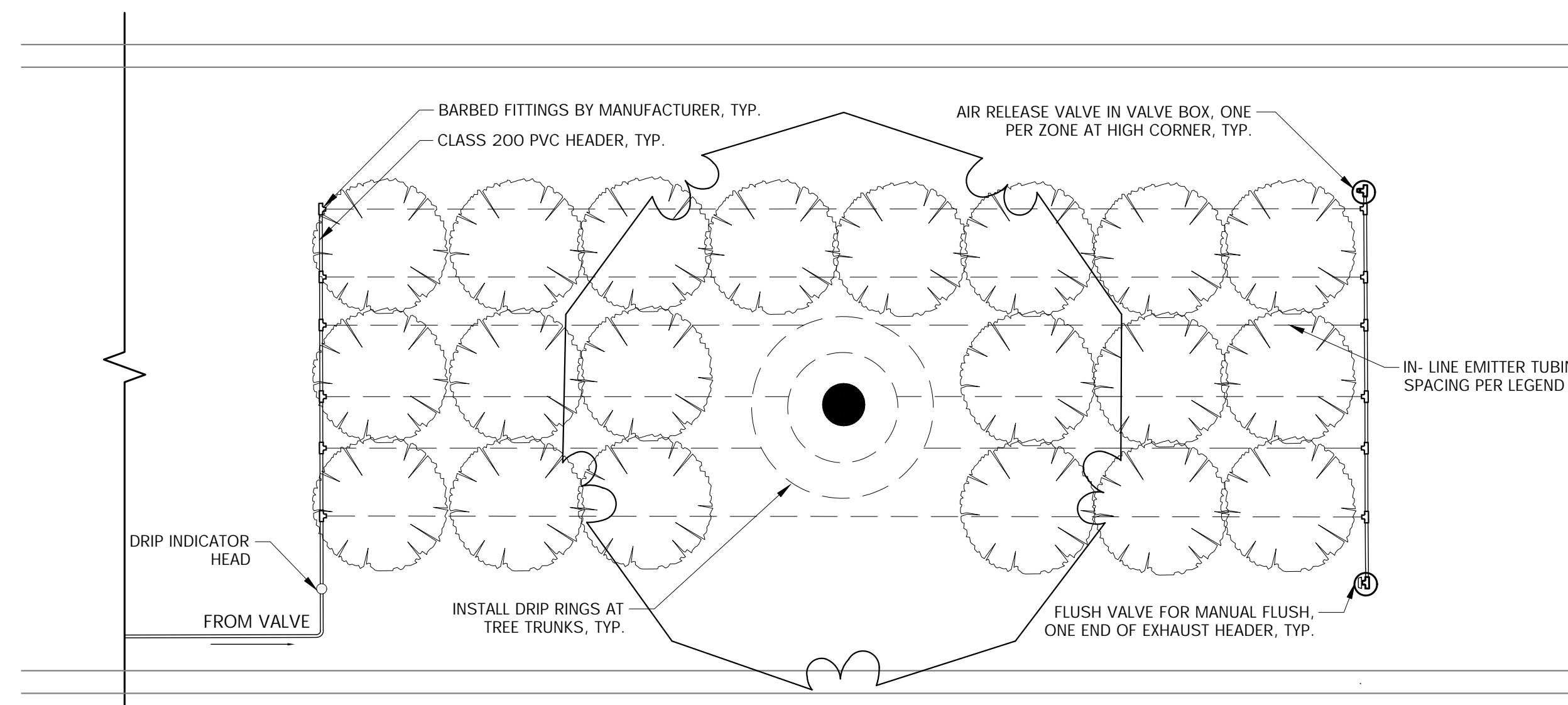
2 DRIP ZONE VALVE ASSEMBLY WITH DECODER
 1 1/2" = 1'-0"



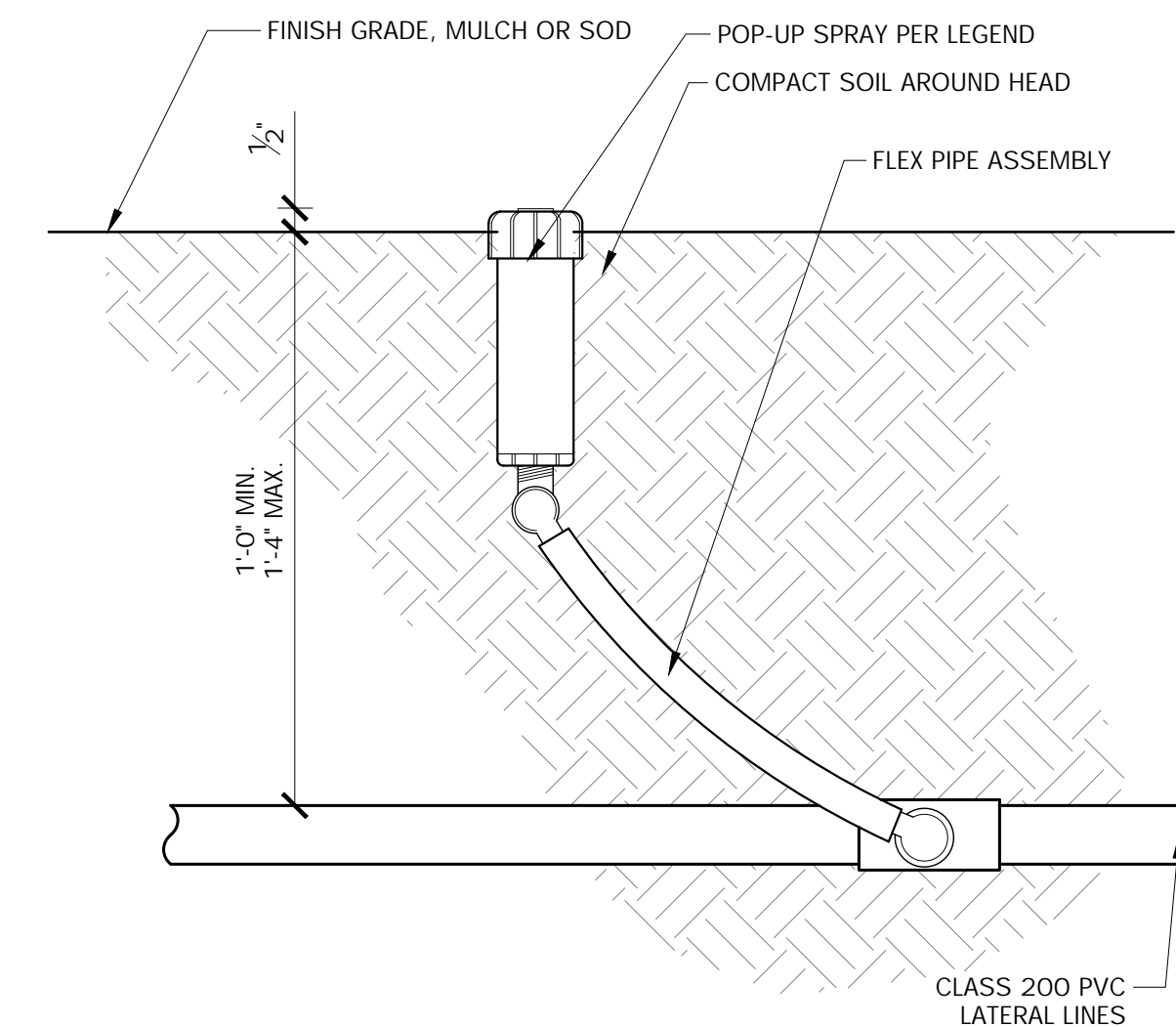
3 MASTER VALVE AND FLOW METER
 1 1/2" = 1'-0"



4 DRIP TUBE INSTALLATION - AT GRADE
 3" = 1'-0"



5 DRIP ZONE TYPICAL ENLARGEMENT
 3/8" = 1'-0"



6 ROTATOR/SPRAY HEAD
 3" = 1'-0"

INTERIM REVIEW
 THESE DOCUMENTS ARE INTENDED FOR INTERIM REVIEW ONLY AND NOT FOR REGULATORY APPROVAL/PERMITTING OR CONSTRUCTION.
 REGISTERED LANDSCAPE ARCHITECT
 DOROTHY J. WITNEVER
 TEXAS REGISTRATION NUMBER 3159

NO.	DATE	ISSUE
NO.	DATE	REVISION

Westwood 4060 BRYANT IRVIN ROAD
 FORT WORTH, TX 76109 T:817.412.7155
 Westwood Professional Services, Inc. www.westwoodgs.com
 TBPELS ENGINEERING FIRM NO. 11756
 TBPELS SURVEYING FIRM NO. 10074301

IRRIGATION DETAILS
PARKING LOT EXPANSION
CITY HALL
120 EL CHICO TRAIL, SUITE A
CITY OF WILLOW PARK, PARKER COUNTY, TEXAS

DESIGN	DRAWN	DATE	SCALE	NOTES	FILE	NO.
DJW	GA	AUG 2024	AS SHOWN			L1.00