

November 30th, 2022

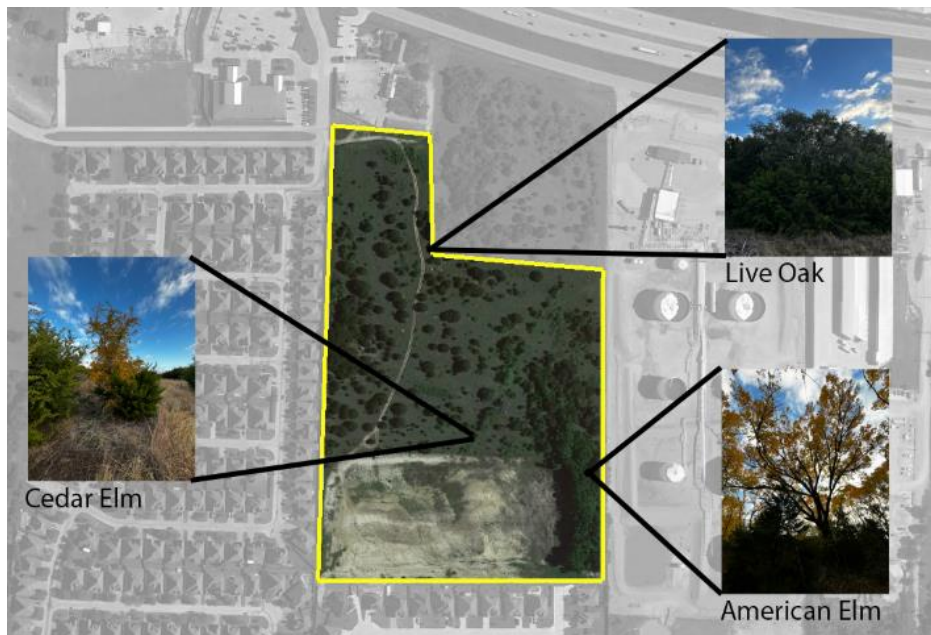
Toni Fisher
Planning & Development Director
City of Willow Park
516 Ranch House Road
Willow Park, TX 76087

Attention: Toni Fisher
Planning & Development Director

RE: Country Hollow Preliminary Plat Tree Survey

Dear Toni:

A site review of the Country Hollow development confirmed the site is predominantly covered with small bushes, shrubs, and undesirable trees. Also on the site are three small areas containing trees that can be considered of a “strong hardwood variety” that were at least three caliper inches in diameter at breast height (DBH). The trees identified were Cedar Elm, Live Oak, and American Elm as shown below:



Preservation of these trees is not viable due to existing site conditions and grading requirements with the proposed development. Mitigation for these removed trees will be provided with new tree plantings. Based on the approved ordinance containing the site plan and PD Zoning, a minimum of two 3-inch caliper trees will be planted on each residential lot for a total of 196 trees or 588 caliper inches. This is sufficient to satisfy the City mitigation requirements.

Please consider this our tree assessment for Country Hollow. We look forward to working with the City of Willow Park in the development of this site.

Sincerely,
Anthony Milbitz, PE