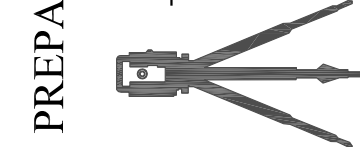


North is based upon an assumed meridian and is to be used for reference only.

Drawn By: DMK
Checked By: JRA

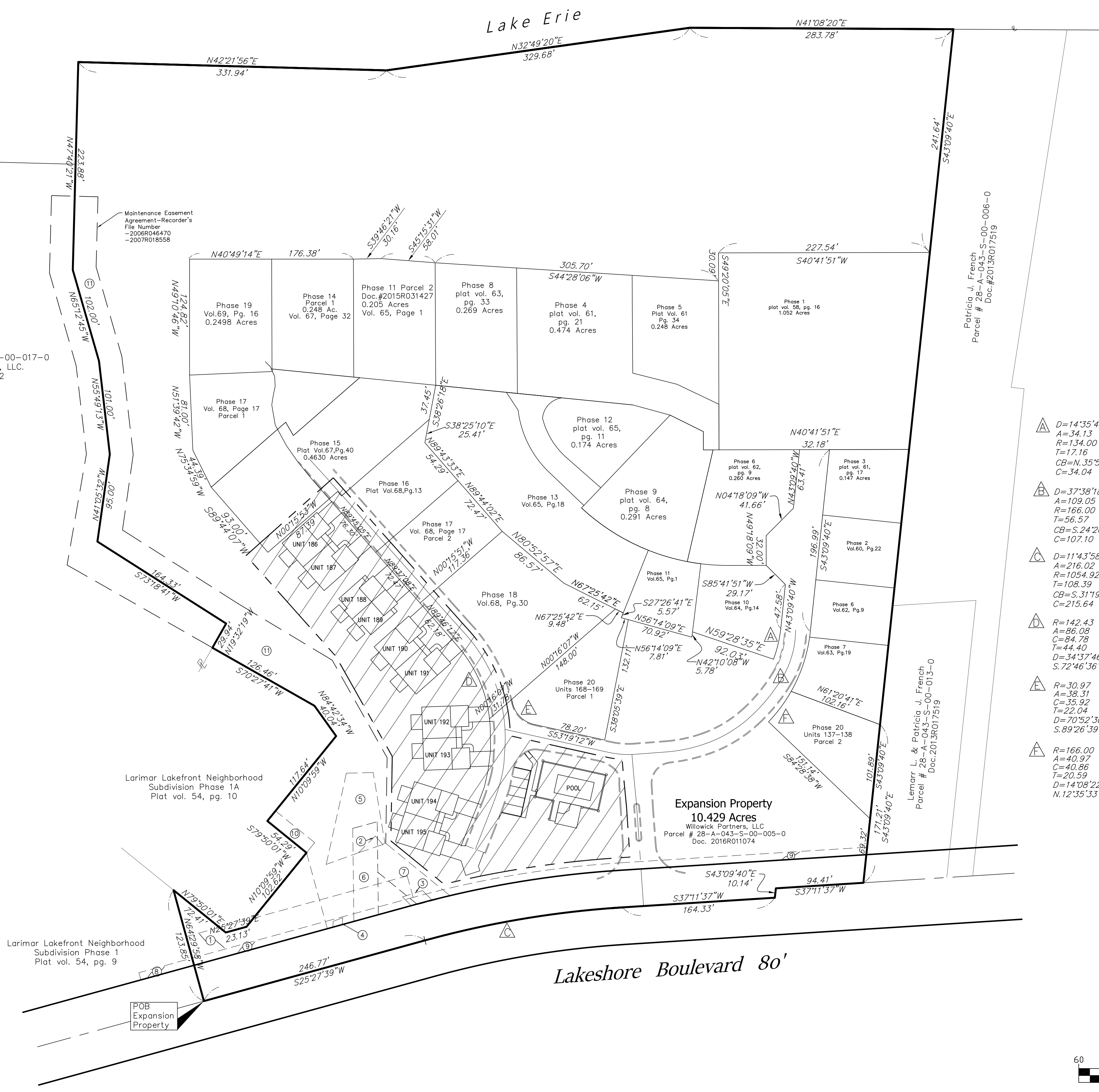
PREPARED BY:
ALBAN SURVEYING CO.
Engineers and Surveyors
38052 Euclid Avenue, Suite 200
Willoughby, Ohio 44094
Phone: 440-946-0752



Larimar Lakefront Neighborhood Condominium Units 186 - 195 City of Willowick - Lake County - Ohio

PROPOSED UNIT REVISION EXHIBIT

Sheet Title:
Sheet Number:



Larimar Subdivision Acreage Summary:

Total Acres	17.3620
Phase 1 Acres	-1.052
Phase 2 Acres	-0.137
Phase 3 Acres	-0.147
Phase 4 Acres	-0.474
Phase 5 Acres	-0.248
Phase 6 Acres	-0.381
Phase 7 Acres	-0.154
Phase 8 Acres	-0.269
Phase 9 Acres	-0.291
Phase 10 Acres	-0.182
Phase 11 Acres	-0.327
Phase 12 Acres	-0.174
Phase 13 Acres	-0.619
Phase 14 Acres	-0.248
Phase 15 Acres	-0.463
Phase 16 Acres	-0.194
Phase 17 Acres	-0.477
Phase 18 Acres	-0.447
Phase 19 Acres	-0.250
Phase 20-Prcl.1 Acres	-0.214
Phase 20-Prcl.2 Acres	-0.185
Remaining Expansion Property	10.429 Acres

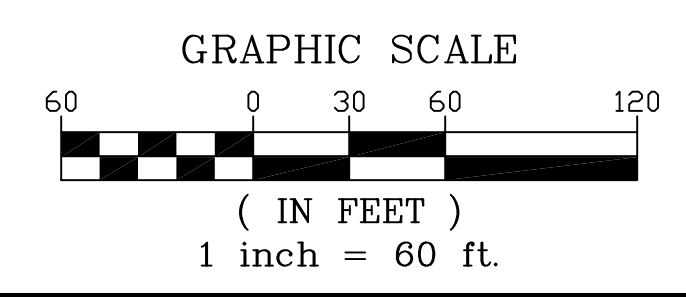
PPN: 28-A-043-U-00-017-0
Willowick Partners, LLC.
2008R009882

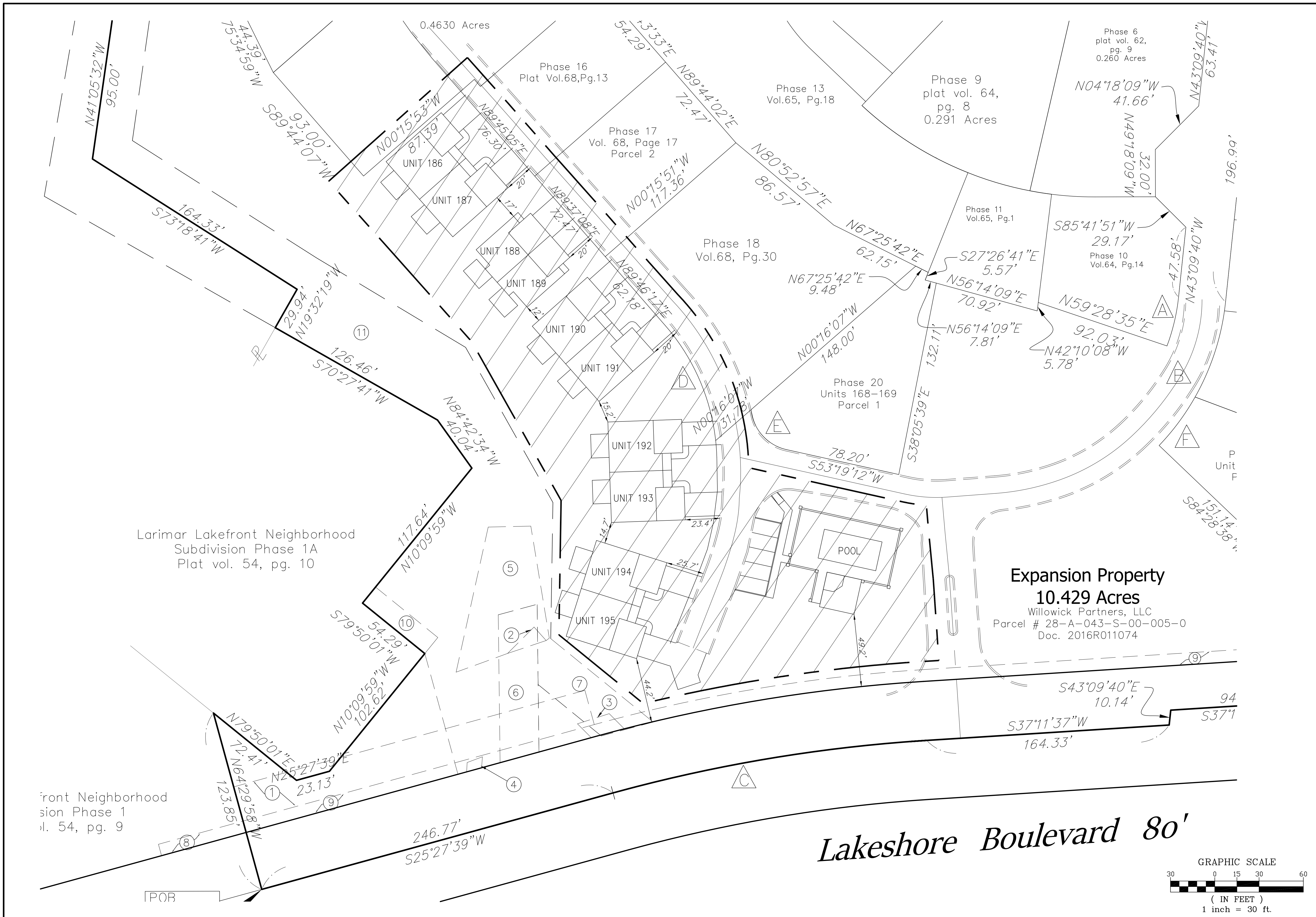
Note: Field survey performed in February, 2021.

Item No. Record Easement Volume & Page

- Easement Recorded in Plat Vol. 54, Pg. 9
- Easement Recorded in Vol. 195, Pg. 380
- Easement Recorded in Vol. 195, Pg. 382
- Easement Recorded in Vol. 195, Pg. 384
- Easement Recorded in Vol. 195, Pg. 386
- Easement Recorded in Vol. 517, Pg. 16
- Easement Recorded in Vol. 548, Pg. 476
- 8' Waterline Easement Doc. #2006R029788
- 8' Waterline Easement Doc. #2006R029789
- Easement Recorded in Plat Vol. 54, Pg. 10
- Easement Recorded in Doc. #2006R046470 & Doc. #2007R018558

- △ D=14'35"40"
A=34.13
R=134.00
T=17.16
CB=N.35°51'53"W
C=34.04
- △ B D=37'38"18"
A=109.05
R=166.00
T=56.57
CB=S.24°20'31"E
C=107.10
- △ C D=11'43"58"
A=216.02
R=1054.92
T=108.39
CB=S.31°19'38"W
C=215.64
- △ D R=142.43
A=86.08
C=84.78
T=44.40
D=34'37"46"
S.72°46'36"E.
- △ E R=30.97
A=38.31
C=35.92
T=22.04
D=70°52'30"
S.89°26'39"W.
- △ F R=166.00
A=40.97
C=40.86
T=20.59
D=14°08'22"
N.12°35'33"W.





North is based upon an assumed meridian and is to be used for reference only.

Drawn By: DMK
Checked By: JRA

PREPARED BY:
ALBAN SURVEYING CO.
Engineers and Surveyors
38052 Euclid Avenue, Suite 200
Willoughby, Ohio 44094
Phone: 440-946-0752

**Larimar Lakefront Neighborhood
Condominium Units 186 - 195
City of Willowick - Lake County - Ohio**

Sheet Title:
**PROPOSED UNIT
REVISION EXHIBIT**

Sheet Number:
2 of 2