

MINOR SUBDIVISION  
PREPARED FOR  
**PAUL BIRD**  
PROJECT LOCATION: 200 HUGHES ROAD  
WILLARD, GREENE COUNTY, MISSOURI

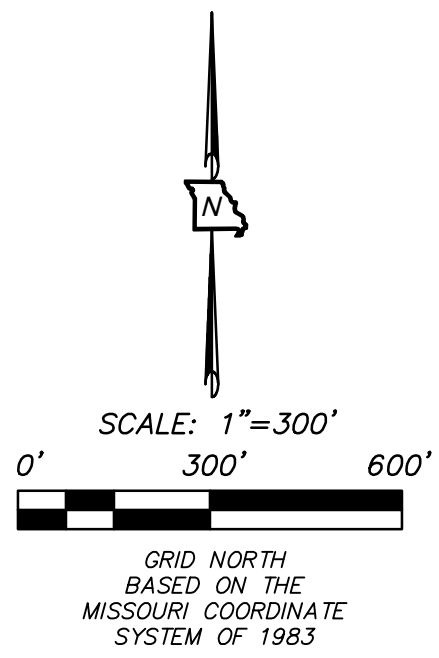
PREPARED BY:  
MICHAEL WHITE - MISSOURI  
PROFESSIONAL LAND  
SURVEYOR #2488  
WHITE LAND SURVEYING, LLC -  
MISSOURI PROFESSIONAL  
LAND SURVEYING  
CORPORATION #2003000370



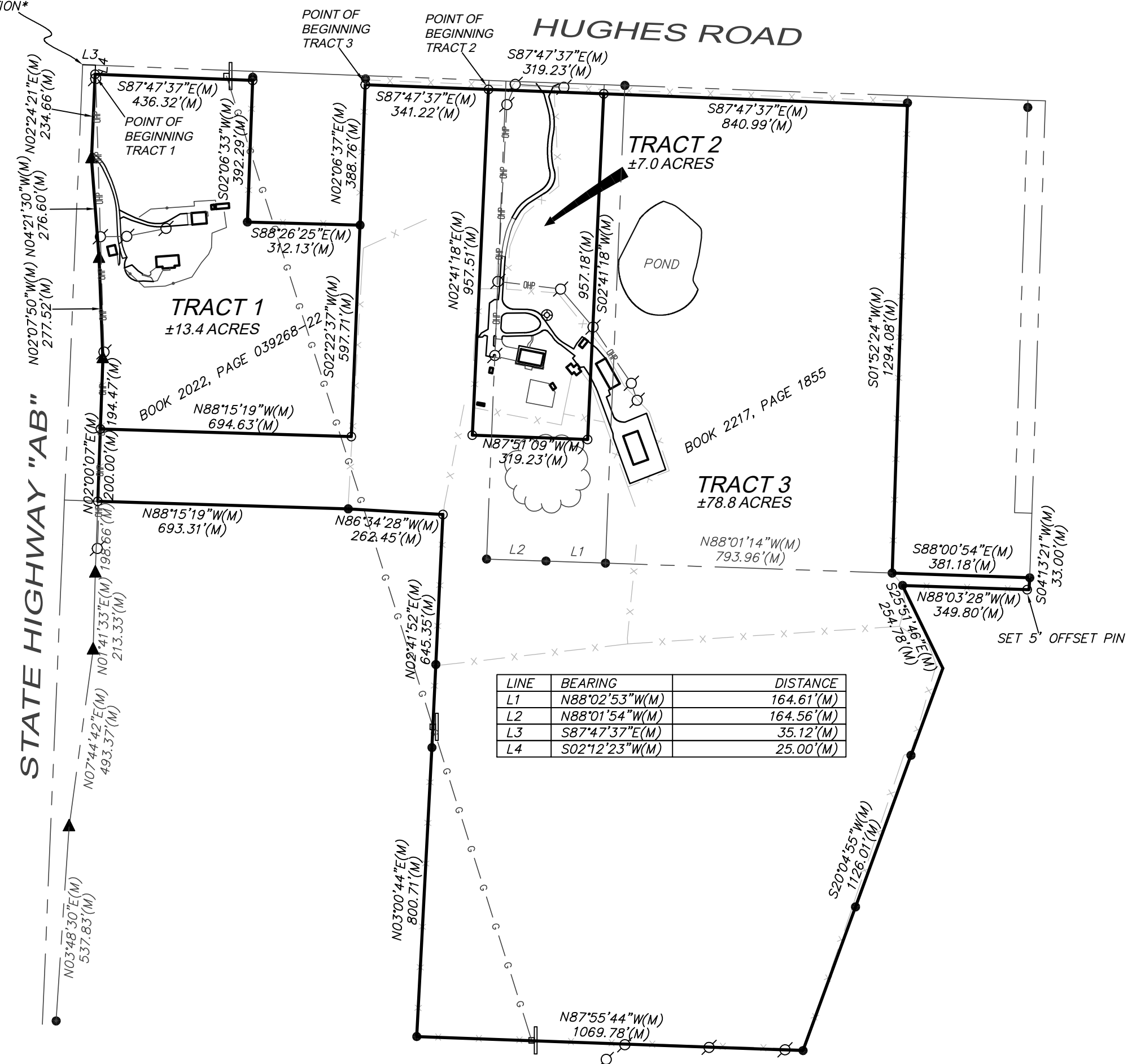
03/18/2026

PRELIMINARY -  
FOR REVIEW ONLY

POINT OF COMMENCEMENT  
NORTHWEST CORNER OF THE  
SOUTHEAST 1/4 OF SECTION 35,  
TOWNSHIP 30 NORTH, RANGE 23 WEST  
\*MAGNETIC ATTRACTION\*



- SYMBOL INDEX
- (D) DEEDED BEARING or DISTANCE
  - (M) MEASURED BEARING or DISTANCE
  - (P) PLATTED BEARING or DISTANCE
  - (R) RECORD BEARING or DISTANCE
  - (X) EXISTING IRON PIN (AS NOTED)
  - SET 1/2" IRON PIN "WLS LSC 370"
  - SET 5/8" IRON PIN W/ALUM. CAP
  - "WHITE LAND SURVEYING WLS 200300370"



LINE	BEARING	DISTANCE
L1	N88°02'53"W(M)	164.61'(M)
L2	N88°01'54"W(M)	164.56'(M)
L3	S87°47'37"E(M)	35.12'(M)
L4	S02°12'23"W(M)	25.00'(M)