

STARBUCKS COFFEE 66359
1280 WEST MAIN STREET
WHITEWATER, WI 53190



23-69250

***HILTON*DISPLAYS**

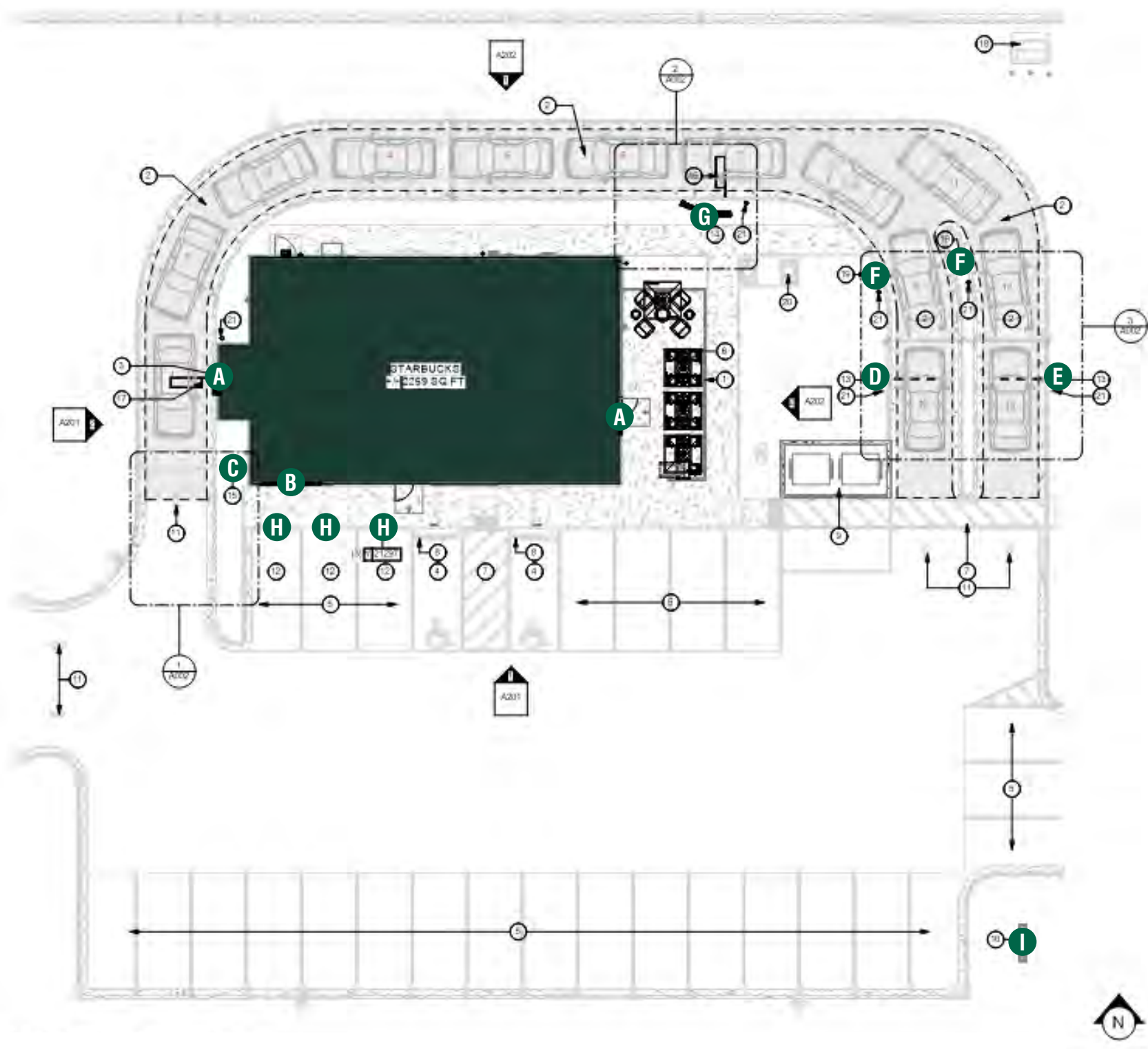
125 HILLSIDE DRIVE • GREENVILLE SC 29607

P 800 353 9132 • F 864 242 2204

www.hiltondisplays.com

SITE PLAN

- A 48" SIREN
- B 12" CHANNEL LETTERS
- C 44" TY/EO DIRECTIONAL
- D CLEARANCE BAR
- E CLEARANCE BAR - RIGHT
- F PRE-MENU BOARD
- G INTEGRATED MENU BOARD
- H PARKING SIGN
- I MONUMENT



SITE PLAN
SCALE: 3/64" = 1'

HILTONDISPLAYS
125 HILLSIDE DRIVE • GREENVILLE SC 29607
P 800 353 9132 • F 864 242 2204
www.hiltondisplays.com

QID 23-69250	
JOB NAME	
Starbucks 66359	
LOCATION	
1280 West Main Street Whitewater, WI 53190	
CUSTOMER CONTACT	
SALESMAN / PM	
Jo Hall	
DESIGNER	
Ben Tompsett	
DWG. DATE	
10-06-23	
REV. DATE / REVISION	
SCALE	
As Noted	
FILE	
2023\Starbucks\Locations\ Whitewater WI\23-69250\ SB Whitewater WI 23-69250	

DESIGN SPECIFICATIONS ACCEPTED BY:

EST:	CLIENT:
SLS/PM:	LANDLORD:

THE INTENT OF THIS DRAWING IS TO SHOW A CONCEPTUAL REPRESENTATION OF THE PROPOSED SIGNAGE. DUE TO VARIATIONS IN PRINTING DEVICES AND SUBSTRATES, THE FINISHED PRODUCT MAY DIFFER SLIGHTLY FROM DRAWING.

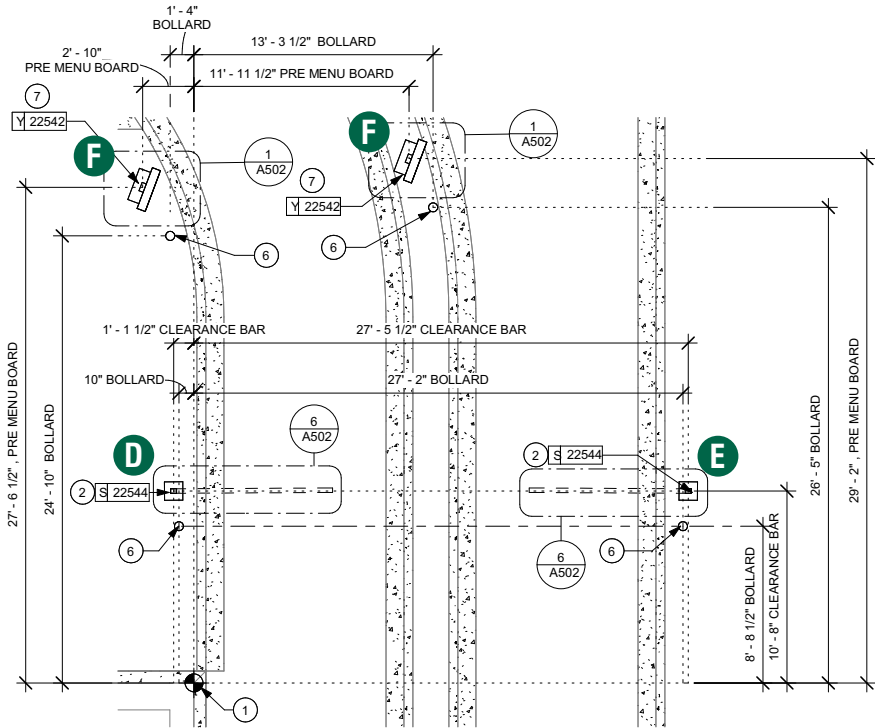


Underwriters
Laboratories Inc.

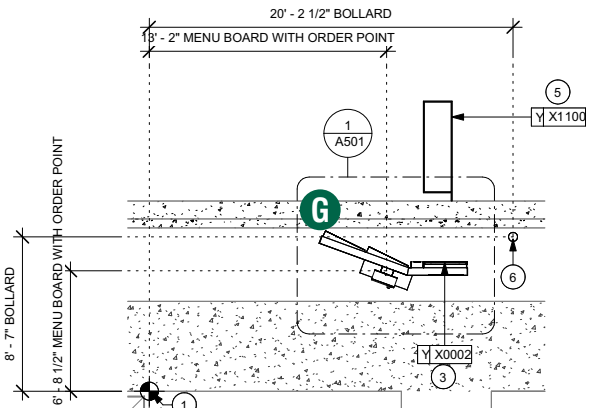
DRY	
DAMP	
WET	X

SITE - DETAIL

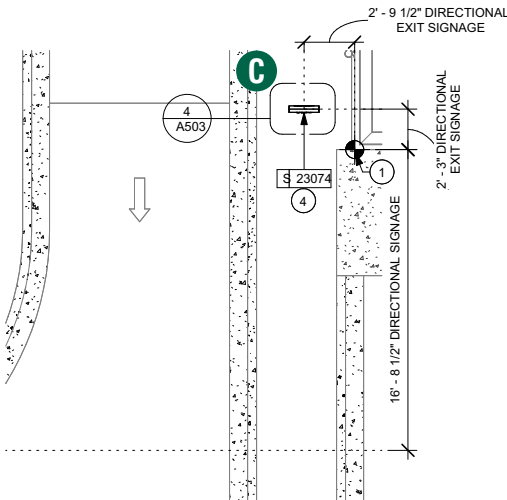
- A 48" SIREN
- B 12" CHANNEL LETTERS
- C 44" TY/EO DIRECTIONAL
- D CLEARANCE BAR
- E CLEARANCE BAR - RIGHT
- F PRE-MENU BOARD
- G INTEGRATED MENU BOARD
- H PARKING SIGN
- I MONUMENT



3 ENLARGED SITE PLAN @ CLEARANCE BAR + PRE-MENU
Scale: 3/32" = 1'-0"



2 ENLARGED SITE PLAN @ DT ORDER POINT
Scale: 3/32" = 1'-0"



1 ENLARGED SITE PLAN @ DIRECTIONAL SIGNAGE
Scale: 3/32" = 1'-0"

HILTONDISPLAYS
125 HILLSIDE DRIVE • GREENVILLE SC 29607
P 800 353 9132 • F 864 242 2204
www.hiltondisplays.com

QID 23-69250

JOB NAME

Starbucks 66359

LOCATION

1280 West Main Street
Whitewater, WI 53190

CUSTOMER CONTACT

SALESMAN / PM

Jo Hall

DESIGNER

Ben Tompsett

DWG. DATE

10-06-23

REV. DATE / REVISION

SCALE

As Noted

FILE

2023\Starbucks\Locations\
Whitewater WI\23-69250\
SB Whitewater WI 23-69250

DESIGN SPECIFICATIONS ACCEPTED BY:

EST:	CLIENT:
SLS/PM:	LANDLORD:

THE INTENT OF THIS DRAWING IS TO SHOW A CONCEPTUAL REPRESENTATION OF THE PROPOSED SIGNAGE. DUE TO VARIATIONS IN PRINTING DEVICES AND SUBSTRATES, THE FINISHED PRODUCT MAY DIFFER SLIGHTLY FROM DRAWING.



ELEVATION

- A 48" SIREN
- B 12" CHANNEL LETTERS
- C 44" TY/EO DIRECTIONAL
- D CLEARANCE BAR
- E CLEARANCE BAR - RIGHT
- F PRE-MENU BOARD
- G INTEGRATED MENU BOARD
- H PARKING SIGN
- I MONUMENT



2 EXTERIOR ELEVATION @ DRIVE THRU WINDOW (WEST)

Scale: 1/4" = 1'-0"

QID 23-69250

JOB NAME

Starbucks 66359

LOCATION

1280 West Main Street
Whitewater, WI 53190

CUSTOMER CONTACT

SALESMAN / PM

Jo Hall

DESIGNER

Ben Tompsett

DWG. DATE

10-06-23

REV. DATE / REVISION

SCALE

As Noted

FILE

2023\Starbucks\Locations\
Whitewater WI\23-69250\
SB Whitewater WI 23-69250

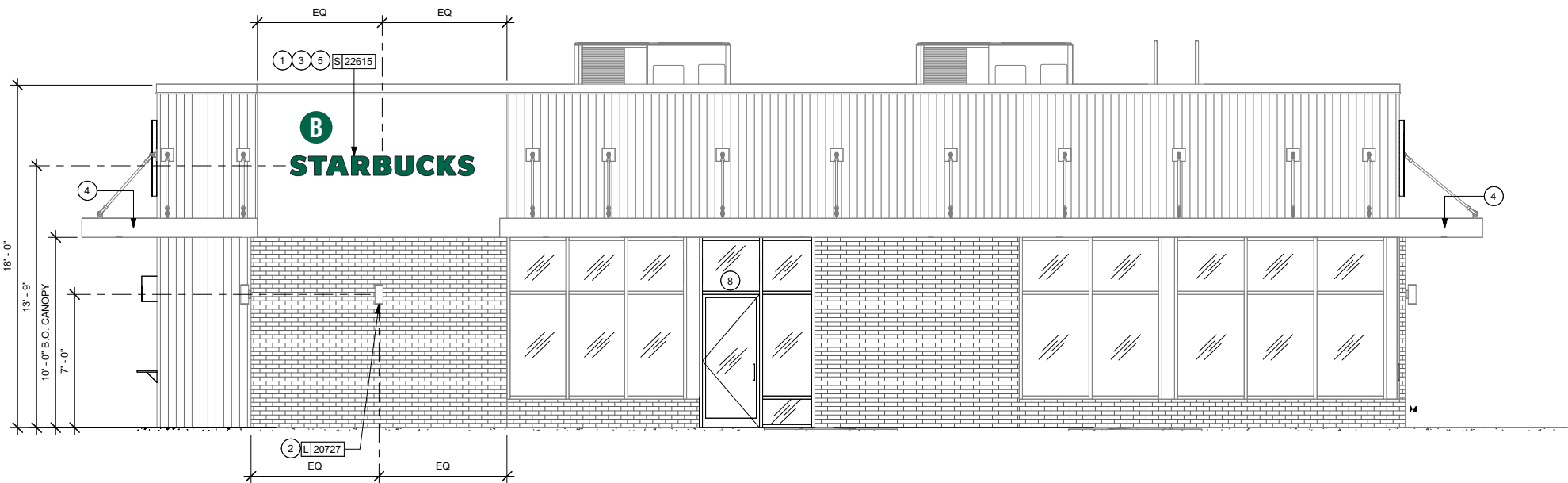
DESIGN SPECIFICATIONS ACCEPTED BY:

EST:	CLIENT:
SLS/PM:	LANDLORD:

THE INTENT OF THIS DRAWING IS TO SHOW A CONCEPTUAL REPRESENTATION OF THE PROPOSED SIGNAGE. DUE TO VARIATIONS IN PRINTING DEVICES AND SUBSTRATES, THE FINISHED PRODUCT MAY DIFFER SLIGHTLY FROM DRAWING.

ELEVATION

- A 48” SIREN
- B 12” CHANNEL LETTERS
- C 44” TY/EO DIRECTIONAL
- D CLEARANCE BAR
- E CLEARANCE BAR - RIGHT
- F PRE-MENU BOARD
- G INTEGRATED MENU BOARD
- H PARKING SIGN
- I MONUMENT



1 EXTERIOR ELEVATION @ STOREFRONT (SOUTH)
SCALE: 1/8" = 1'-0"

HILTONDISPLAYS
125 HILLSIDE DRIVE • GREENVILLE SC 29607
P 800 353 9132 • F 864 242 2204
www.hiltondisplays.com

QID 23-69250

JOB NAME

Starbucks 66359

LOCATION

1280 West Main Street
Whitewater, WI 53190

CUSTOMER CONTACT

SALESMAN / PM

Jo Hall

DESIGNER

Ben Tompsett

DWG. DATE

10-06-23

REV. DATE / REVISION

SCALE

As Noted

FILE

2023\Starbucks\Locations\
Whitewater WI\23-69250\
SB Whitewater WI 23-69250

DESIGN SPECIFICATIONS ACCEPTED BY:

EST:	CLIENT:
SLS/PM:	LANDLORD:

THE INTENT OF THIS DRAWING IS TO SHOW A CONCEPTUAL REPRESENTATION OF THE PROPOSED SIGNAGE. DUE TO VARIATIONS IN PRINTING DEVICES AND SUBSTRATES, THE FINISHED PRODUCT MAY DIFFER SLIGHTLY FROM DRAWING.



ELEVATION

- A 48" SIREN
- B 12" CHANNEL LETTERS
- C 44" TY/EO DIRECTIONAL
- D CLEARANCE BAR
- E CLEARANCE BAR - RIGHT
- F PRE-MENU BOARD
- G INTEGRATED MENU BOARD
- H PARKING SIGN
- I MONUMENT



2 EXTERIOR ELEVATION @ PATIO ENTRY (EAST)

Scale: 1/4" = 1'-0"

QID 23-69250

JOB NAME

Starbucks 66359

LOCATION

1280 West Main Street
Whitewater, WI 53190

CUSTOMER CONTACT

SALESMAN / PM

Jo Hall

DESIGNER

Ben Tompsett

DWG. DATE

10-06-23

REV. DATE / REVISION

SCALE

As Noted

FILE

2023\Starbucks\Locations\
Whitewater WI\23-69250\
SB Whitewater WI 23-69250

DESIGN SPECIFICATIONS ACCEPTED BY:

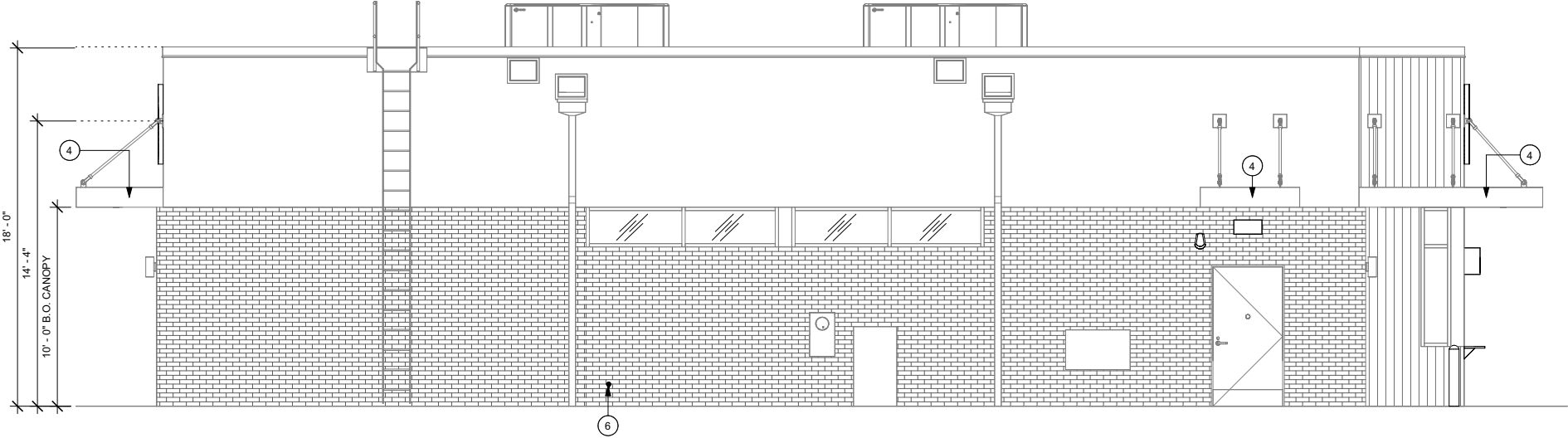
EST:	CLIENT:
SLS/PM:	LANDLORD:

THE INTENT OF THIS DRAWING IS TO SHOW A CONCEPTUAL REPRESENTATION OF THE PROPOSED SIGNAGE. DUE TO VARIATIONS IN PRINTING DEVICES AND SUBSTRATES, THE FINISHED PRODUCT MAY DIFFER SLIGHTLY FROM DRAWING.

ELEVATION

- A 48” SIREN
- B 12” CHANNEL LETTERS
- C 44” TY/EO DIRECTIONAL
- D CLEARANCE BAR
- E CLEARANCE BAR - RIGHT
- F PRE-MENU BOARD
- G INTEGRATED MENU BOARD
- H PARKING SIGN
- I MONUMENT

NO SIGNAGE THIS ELEVATION



1 EXTERIOR ELEVATION @ SERVICE ENTRY (NORTH)
SCALE: 1/8" = 1'-0"

HILTONDISPLAYS
125 HILLSIDE DRIVE • GREENVILLE SC 29607
P 800 353 9132 • F 864 242 2204
www.hiltondisplays.com

QID 23-69250

JOB NAME

Starbucks 66359

LOCATION

1280 West Main Street
Whitewater, WI 53190

CUSTOMER CONTACT

SALESMAN / PM

Jo Hall

DESIGNER

Ben Tompsett

DWG. DATE

10-06-23

REV. DATE / REVISION

SCALE

As Noted

FILE

2023\Starbucks\Locations\
Whitewater WI\23-69250\
SB Whitewater WI 23-69250

DESIGN SPECIFICATIONS ACCEPTED BY:

EST:	CLIENT:
SLS/PM:	LANDLORD:

THE INTENT OF THIS DRAWING IS TO SHOW A CONCEPTUAL REPRESENTATION OF THE PROPOSED SIGNAGE. DUE TO VARIATIONS IN PRINTING DEVICES AND SUBSTRATES, THE FINISHED PRODUCT MAY DIFFER SLIGHTLY FROM DRAWING.

 Underwriters Laboratories Inc.

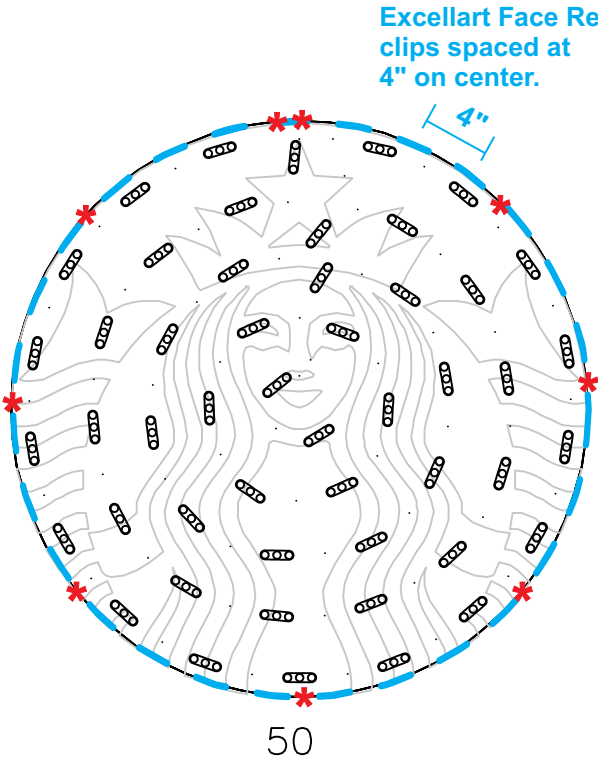
DRY	
DAMP	
WET	X

S/F EXTERIOR TRIMLESS FLEX FACE SIREN WALL SIGN

Qty. 2

SBC-S13163-48-FF

A



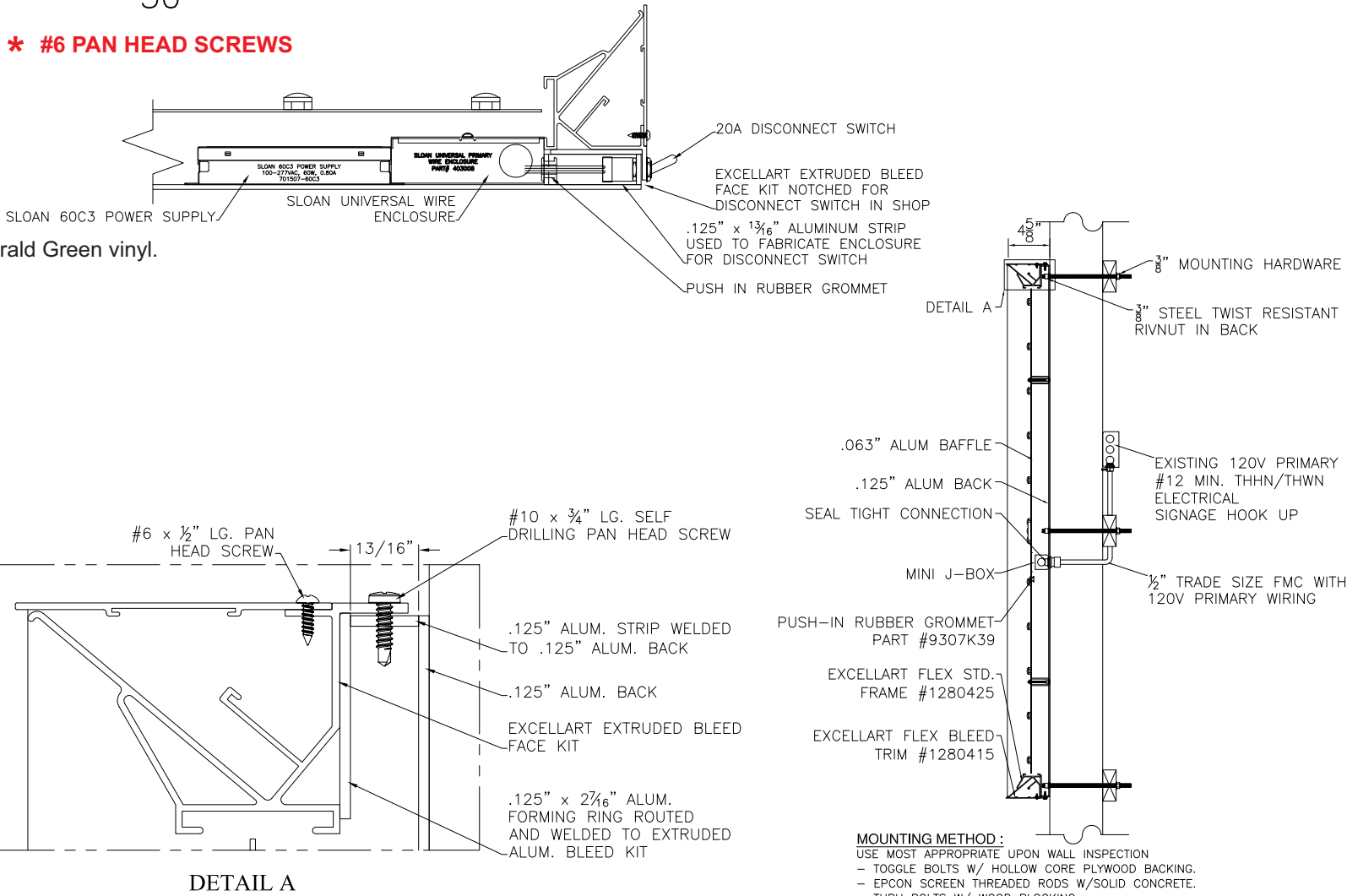
- 1) ACTUAL CHANNEL LETTER POPULATION AND PRODUCT PLACEMENT MAY VARY FROM THIS LAYOUT
- 2) PRISM ENLIGHTEN WHITE 6500K LAID OUT AT 1.5 MODULES PER FOOT, 5.0" ON CENTER
- 3) EACH 60W3 POWER SUPPLY CAN RUN UP TO 72 PRISM ENLIGHTEN WHITE 6500K MODULES
- 4) LAYOUT BASED ON A 2.125" CAN DEPTH
- 5) DIMENSIONS ARE IN INCHES UNLESS STATED OTHERWISE
- 6) 701269-6WEJ1-MB WATTS PER MODULE: .75
- 7) PRIMARY SYSTEM POWER: 46.88 WATTS
- 8) LED MODULE POWER USAGE (secondary): 57.90 WATTS

ESTIMATED PRODUCT B.O.M. PER SIGN:
50 Each Prism Enlighten White 6500K Modules – 34’
PN: 701269-6WEJ1-MB
1 Each 60C2 (Damp/Dry locations) or 60W3 (Wet location) 60W Power Supply 12VDC
1 Each 100’ Roll of Jacketed Cable

1 FRONT VIEW
Scale: 3/4" = 1' (11x17 Paper)

Specifications:

- A Single face internally illuminated Excellart EC-Flex Standard flex face cabinet with bleed trim cover.
- B White 3M 19 oz Panagraphics III Flex Faces with 3M 3630-126 Dark Emerald Green vinyl. Face retention clips spaced every 4".
- C Interior of cabinet painted reflective white and exterior painted satin black.
- D Internally illuminated with 6500K Sloan Prism Enlighten LEDs with remote power supply.
- E 1/4" drain holes located at the bottom of cabinet as required by UL 48 for Electric Signs.
- F Drain holes to be covered with drain hole covers to reduce light leaks.



COLOR LEGEND		
	PMS/PAINT	VINYL
	PMS 3425 C	3M 3630-126
	SATIN BLACK	NA
	PMS WHITE	NA

HILTONDISPLAYS
125 HILLSIDE DRIVE • GREENVILLE SC 29607
P 800 353 9132 • F 864 242 2204
www.hiltondisplays.com

QID 23-69250

JOB NAME

Starbucks 66359

LOCATION

1280 West Main Street
Whitewater, WI 53190

CUSTOMER CONTACT

SALESMAN / PM

Jo Hall

DESIGNER

Ben Tompsett

DWG. DATE

10-06-23

REV. DATE / REVISION

SCALE

As Noted

FILE

2023\Starbucks\Locations\
Whitewater WI\23-69250\
SB Whitewater WI 23-69250

DESIGN SPECIFICATIONS ACCEPTED BY:

EST:	CLIENT:
SLS/PM:	LANDLORD:

THE INTENT OF THIS DRAWING IS TO SHOW A CONCEPTUAL REPRESENTATION OF THE PROPOSED SIGNAGE. DUE TO VARIATIONS IN PRINTING DEVICES AND SUBSTRATES, THE FINISHED PRODUCT MAY DIFFER SLIGHTLY FROM DRAWING.



TRIMLESS CHANNEL LETTERS - REMOTE

Qty. 1

B

HILTONDISPLAYS
125 HILLSIDE DRIVE • GREENVILLE SC 29607
P 800 353 9132 • F 864 242 2204
www.hiltondisplays.com

QID 23-69250

JOB NAME

Starbucks 66359

LOCATION

1280 West Main Street
Whitewater, WI 53190

CUSTOMER CONTACT

SALESMAN / PM

Jo Hall

DESIGNER

Ben Tompsett

DWG. DATE

10-06-23

REV. DATE / REVISION

SCALE

As Noted

FILE

2023\Starbucks\Locations\
Whitewater WI\23-69250\
SB Whitewater WI 23-69250

DESIGN SPECIFICATIONS ACCEPTED BY:

EST:	CLIENT:
SLS/PM:	LANDLORD:

THE INTENT OF THIS DRAWING IS TO SHOW A CONCEPTUAL REPRESENTATION OF THE PROPOSED SIGNAGE. DUE TO VARIATIONS IN PRINTING DEVICES AND SUBSTRATES, THE FINISHED PRODUCT MAY DIFFER SLIGHTLY FROM DRAWING.



SBC-S22615-SB-12-G-SDS

9'-8"

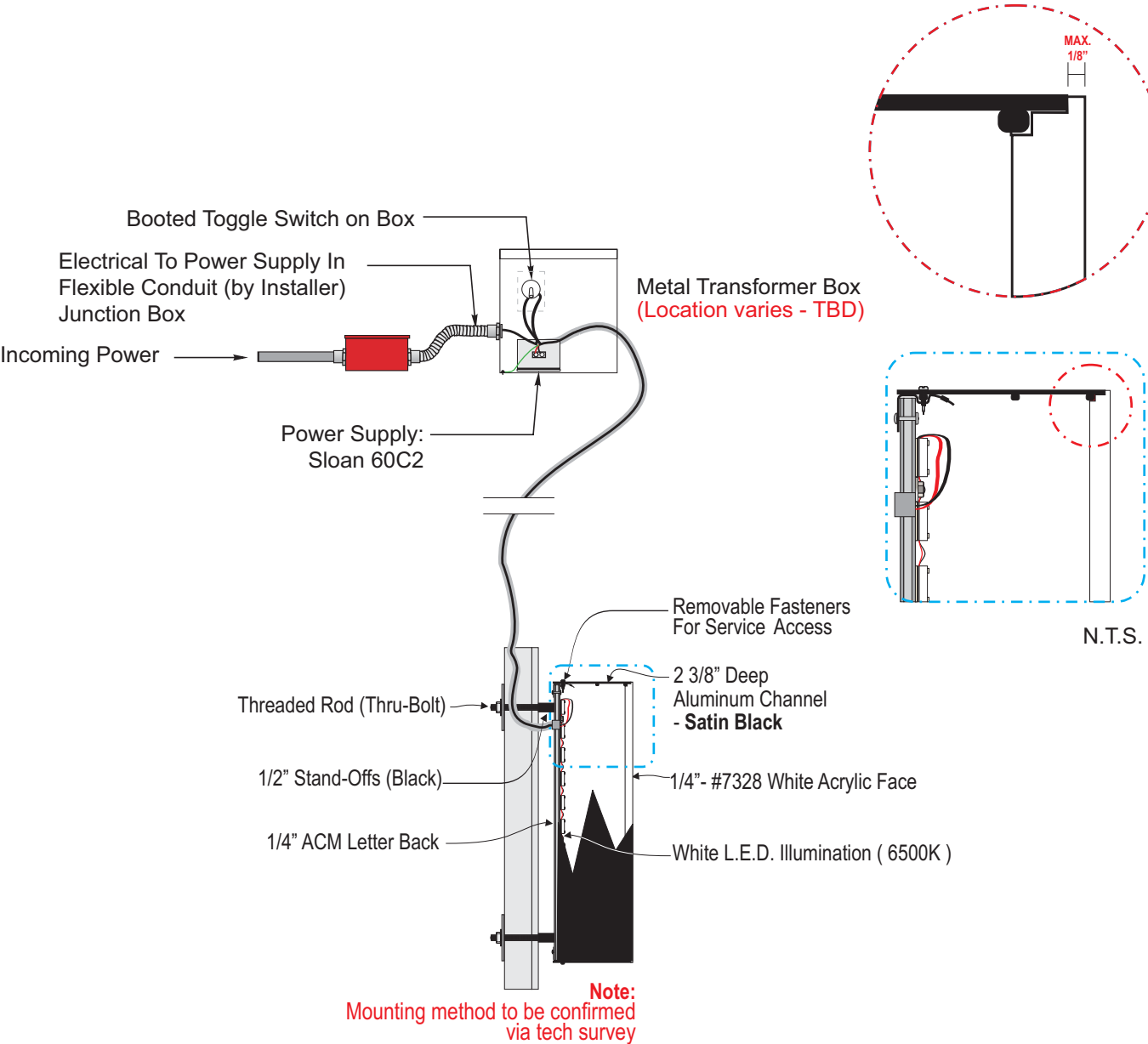
1'-0" **STARBUCKS**

Front View

Scale: 1" = 1'-0" (11x17 Paper)

Specifications:

- A Internally illuminated SDS LetterForm trimless channel letter with returns painted **satIn black**.
- B Green faces to be 1/4" 7328 gloss white acrylic with 3M 3630-126 Dark Emerald Green vinyl applied first surface.
- C Internally illuminated letters with 6500K Sloan white LED mounted to 1/4" ACM back
- D 1/4" drain holes located at the bottom of each letter as required by UL 48 for Electric Signs.
- E Drain holes to be covered with drain hole covers to reduce light leaks.



COLOR LEGEND		
	PMS/PAINT	VINYL
	PMS 3425 C	3M 3630-126
	SATIN BLACK	NA
	PMS WHITE	NA



DIRECTIONAL - NEW FOUNDATION

SBC-S23074-DIR-IL-NF-XTY-44

Qty. 1



HILTONDISPLAYS

125 HILLSIDE DRIVE • GREENVILLE SC 29607
P 800 353 9132 • F 864 242 2204
www.hiltondisplays.com

QID 23-69250

JOB NAME

Starbucks 66359

LOCATION

1280 West Main Street
Whitewater, WI 53190

CUSTOMER CONTACT

SALESMAN / PM

Jo Hall

DESIGNER

Ben Tompsett

DWG. DATE

10-06-23

REV. DATE / REVISION

SCALE

As Noted

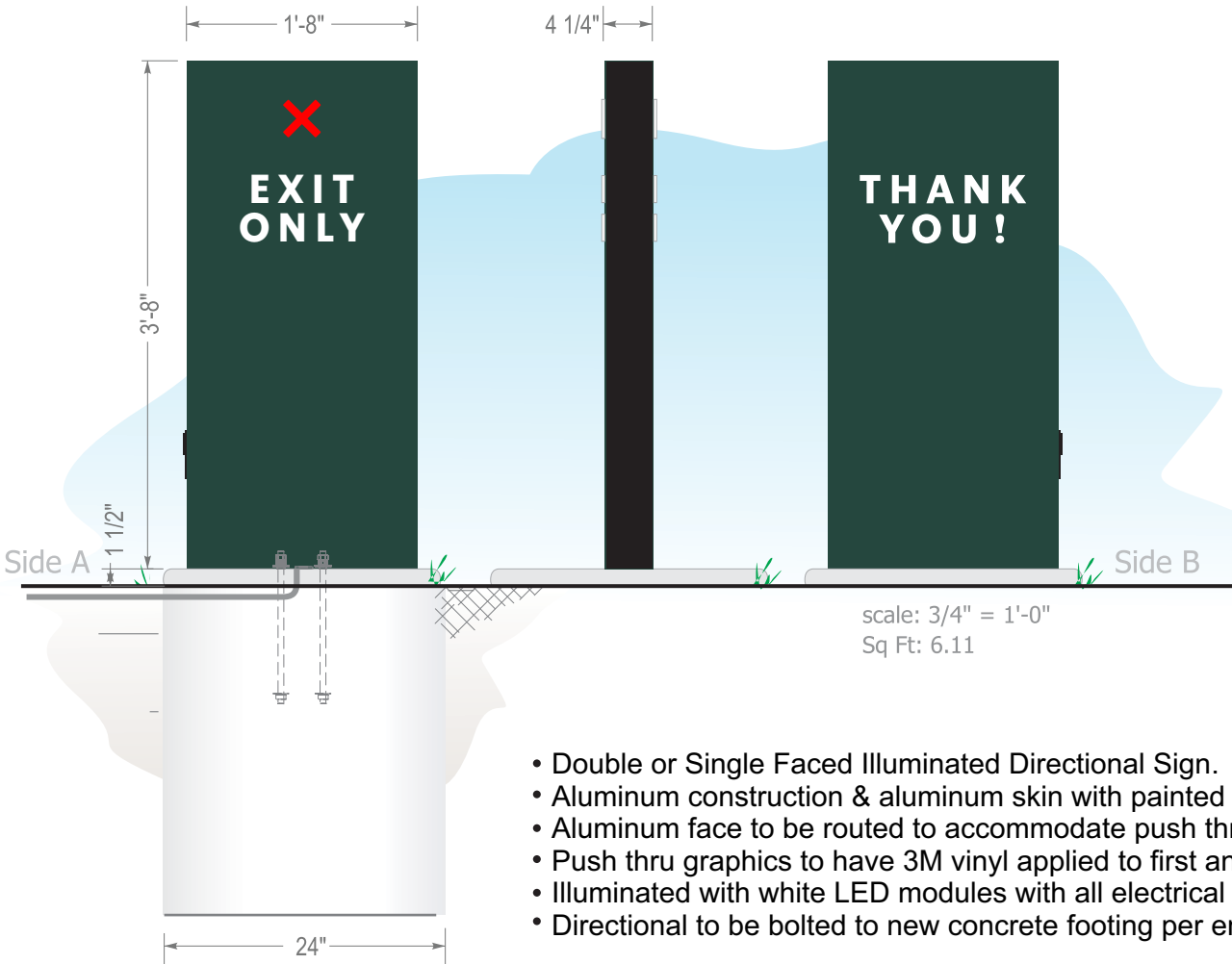
FILE

2023\Starbucks\Locations\
Whitewater WI\23-69250\
SB Whitewater WI 23-69250

DESIGN SPECIFICATIONS ACCEPTED BY:

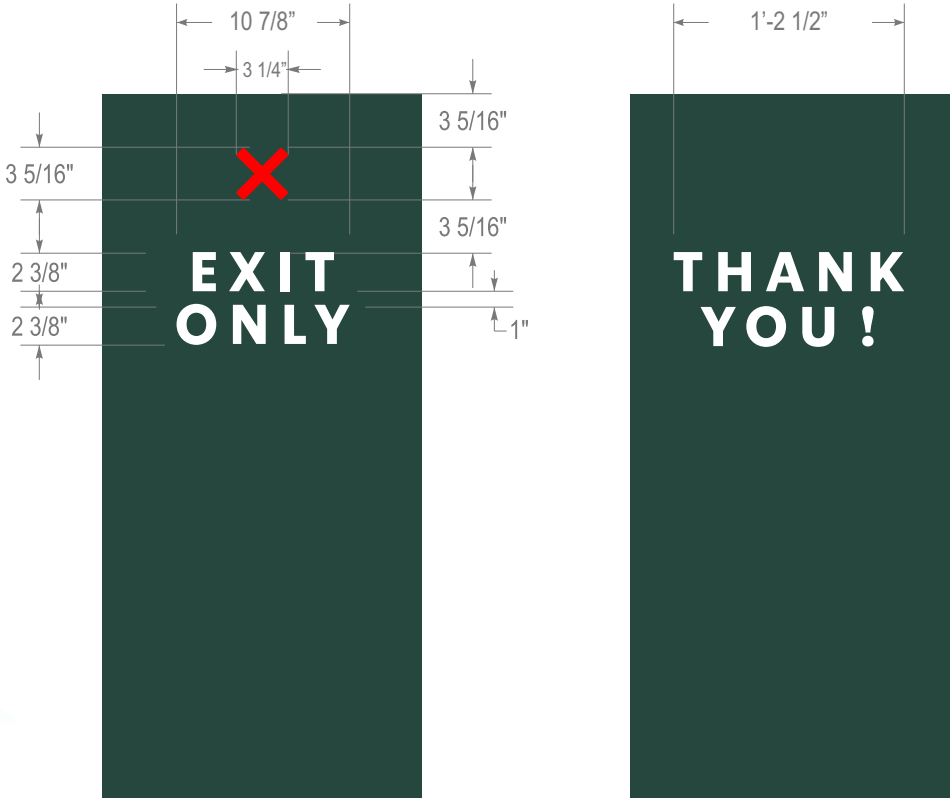
EST:	CLIENT:
SLS/PM:	LANDLORD:

THE INTENT OF THIS DRAWING IS TO SHOW A CONCEPTUAL REPRESENTATION OF THE PROPOSED SIGNAGE. DUE TO VARIATIONS IN PRINTING DEVICES AND SUBSTRATES, THE FINISHED PRODUCT MAY DIFFER SLIGHTLY FROM DRAWING.

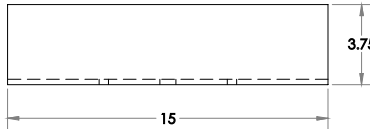
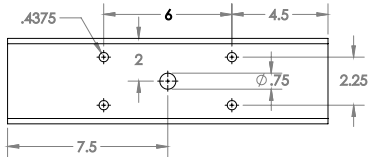
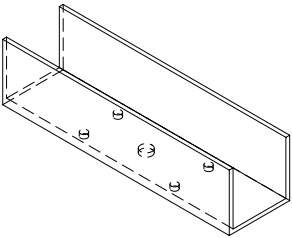


scale: 3/4" = 1'-0"
Sq Ft: 6.11

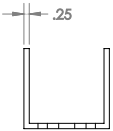
- Double or Single Faced Illuminated Directional Sign.
- Aluminum construction & aluminum skin with painted finishes.
- Aluminum face to be routed to accommodate push thru graphics.
- Push thru graphics to have 3M vinyl applied to first and second surface.
- Illuminated with white LED modules with all electrical UL listed and labeled.
- Directional to be bolted to new concrete footing per engineering for site location and soil condition.



scale: 1" = 1'-0"



aluminum box tube with
top removed to create u channel



Colors:

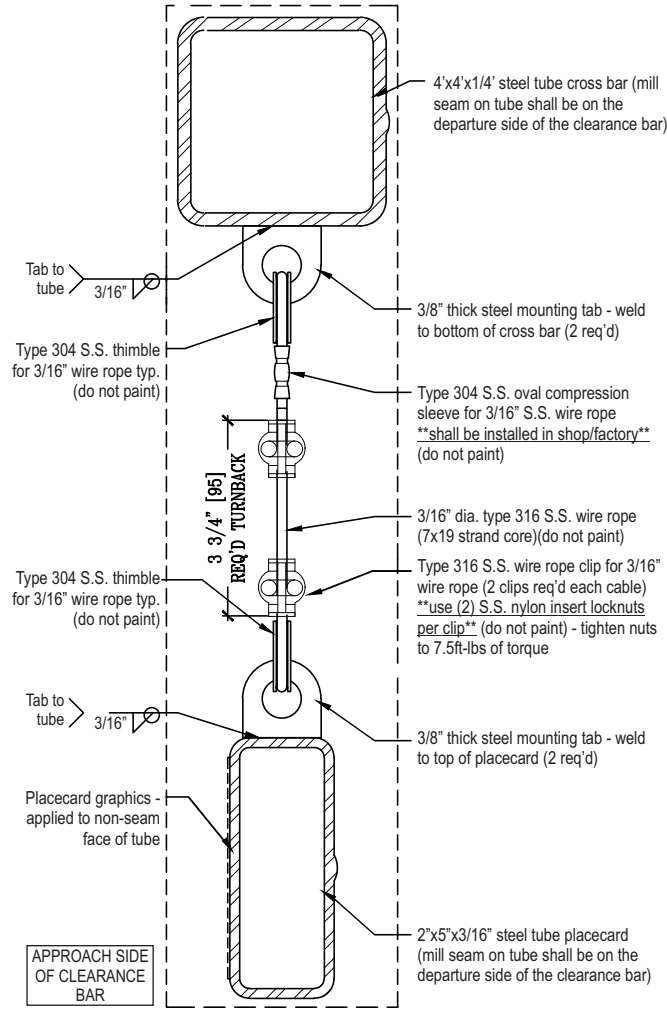
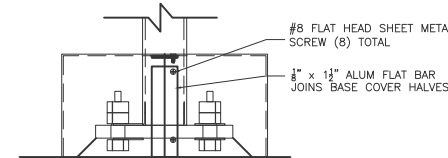
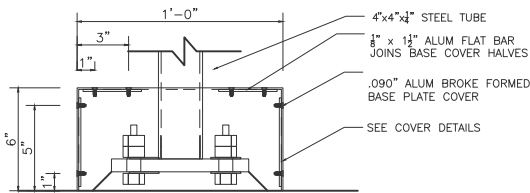
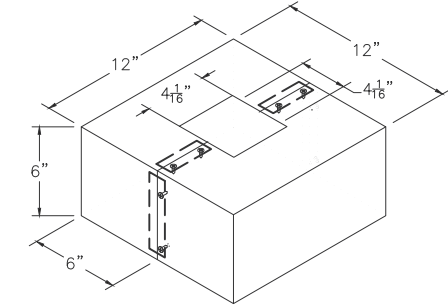
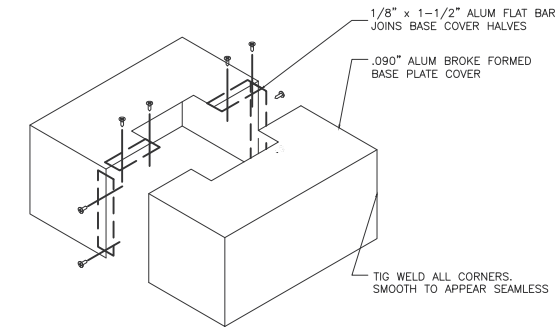
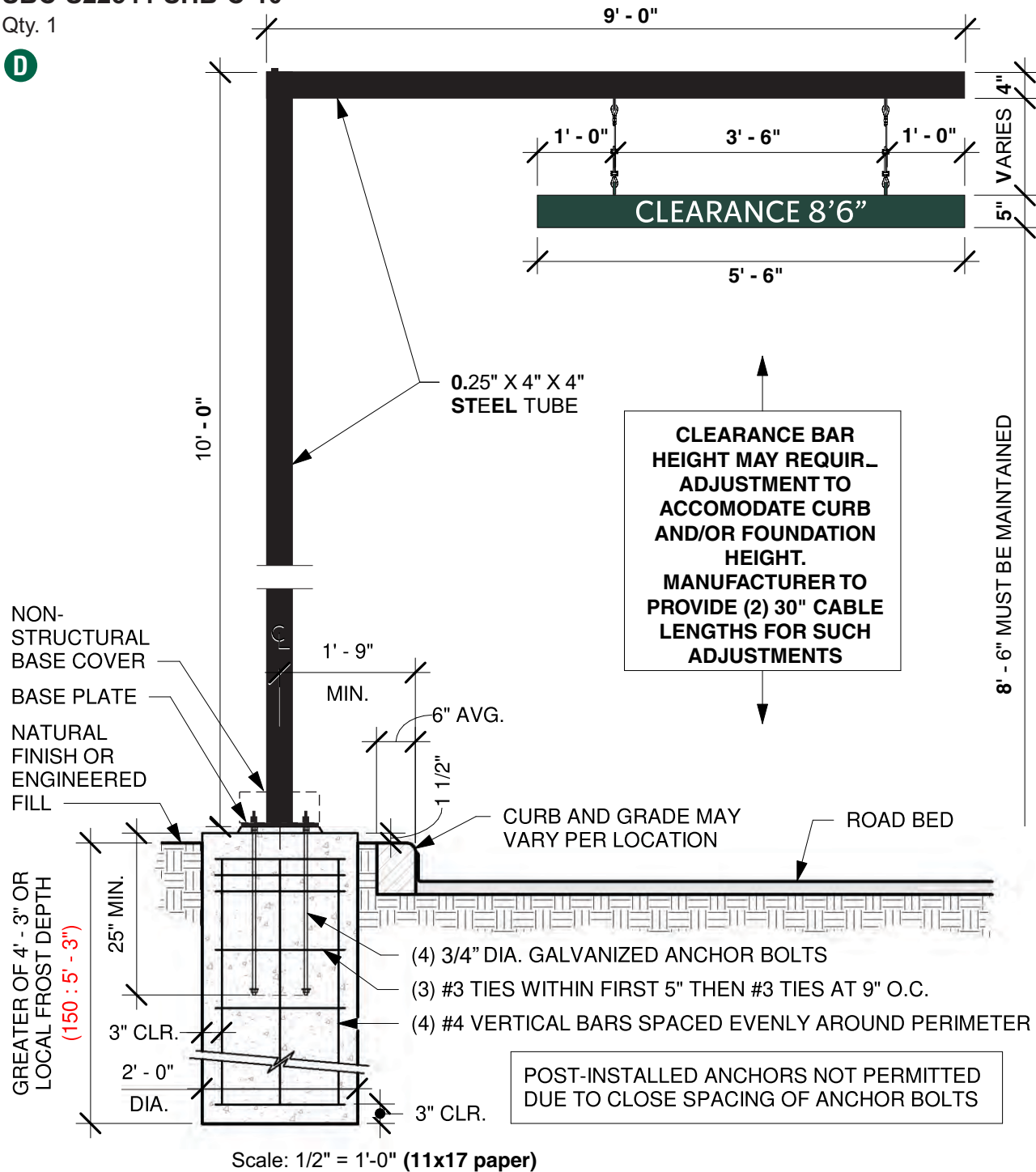
- Painted Pantone #560 (satin finish)
- Painted Pantone 419 Black (RAL 7021M) (satin finish)
- Clear Acrylic (push thru)
- 3M White Translucent Vinyl (first surface)
- 3M Diffuser Film (second surface)

REVOLUTION CLEARANCE BAR

SBC-S22544-SHB-C-10

Qty. 1

D



End Section View

ASSUMED CONDITIONS
DESIGN LOADS

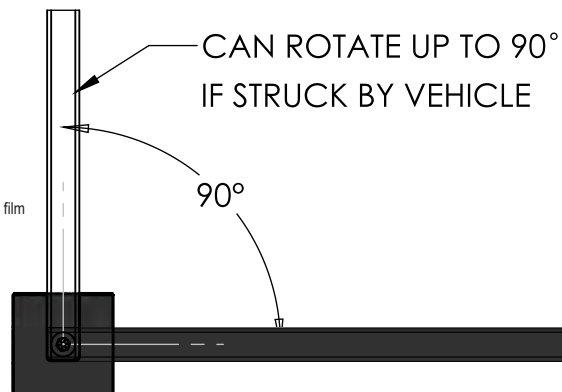
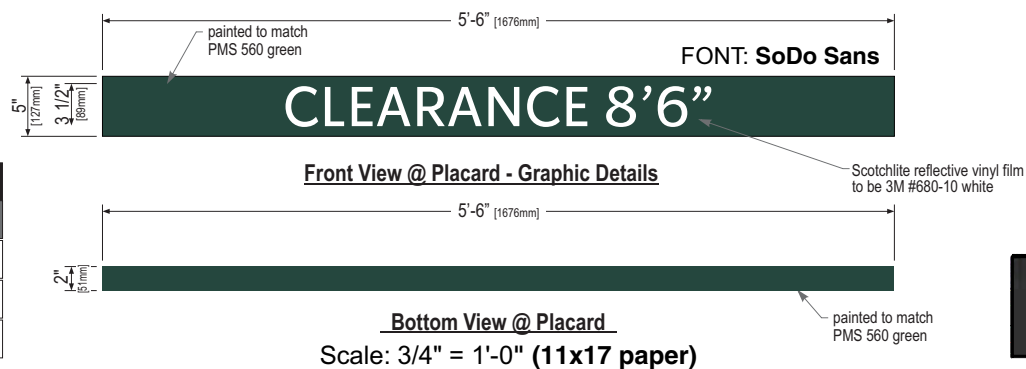
- 115 MPH wind load (150 MPH Wind Load)
- Category II, Exposure C
- Est. Combined Weight of Canopy & DOS: 993 Lbs.
- Concrete Strength: MN 3000 PSI @ 28 Days
- 2012 International Building Code, ASCE 7-10
- Vertical Soil Bearing Pressure: 2000 PSF

Rotate Footing Bolt pattern Relative To Drive Lane Per Site Plan & Signage Configuration Details.

Route Conduit Per Electrical Site Plan Provide 3\" Stub-Up

GC Responsible For Foundations & Footings On All Menu Boards & Drive-Thru Elements. Signage Vendor To Supply Templates & Install Menu Boards Only.

COLOR LEGEND		
	PMS/PAINT	VINYL
	PMS 560 C	NA
	PSB 6865/ SATIN BLACK	3M 3630-22
	REFL. WHITE	3M 680-10



HILTONDISPLAYS

125 HILLSIDE DRIVE • GREENVILLE SC 29607
P 800 353 9132 • F 864 242 2204
www.hiltondisplays.com

QID 23-69250

JOB NAME

Starbucks 66359

LOCATION

1280 West Main Street
Whitewater, WI 53190

CUSTOMER CONTACT

SALESMAN / PM

Jo Hall

DESIGNER

Ben Tompsett

DWG. DATE

10-06-23

REV. DATE / REVISION

SCALE

As Noted

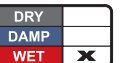
FILE

2023\Starbucks\Locations\
Whitewater WI\23-69250\
SB Whitewater WI 23-69250

DESIGN SPECIFICATIONS ACCEPTED BY:

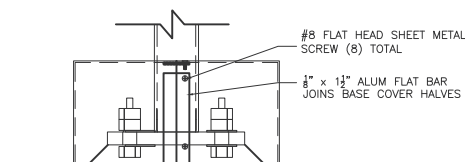
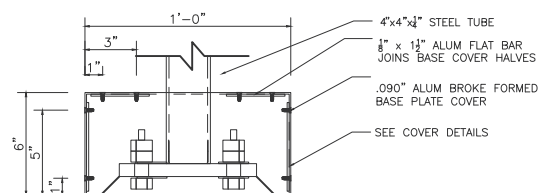
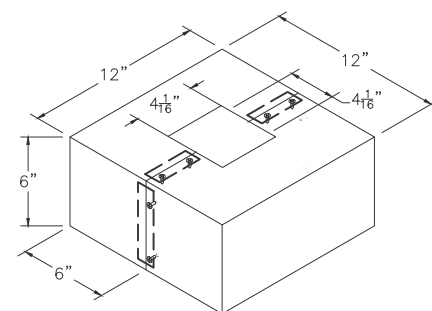
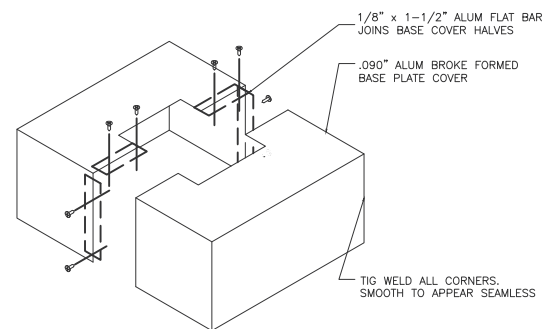
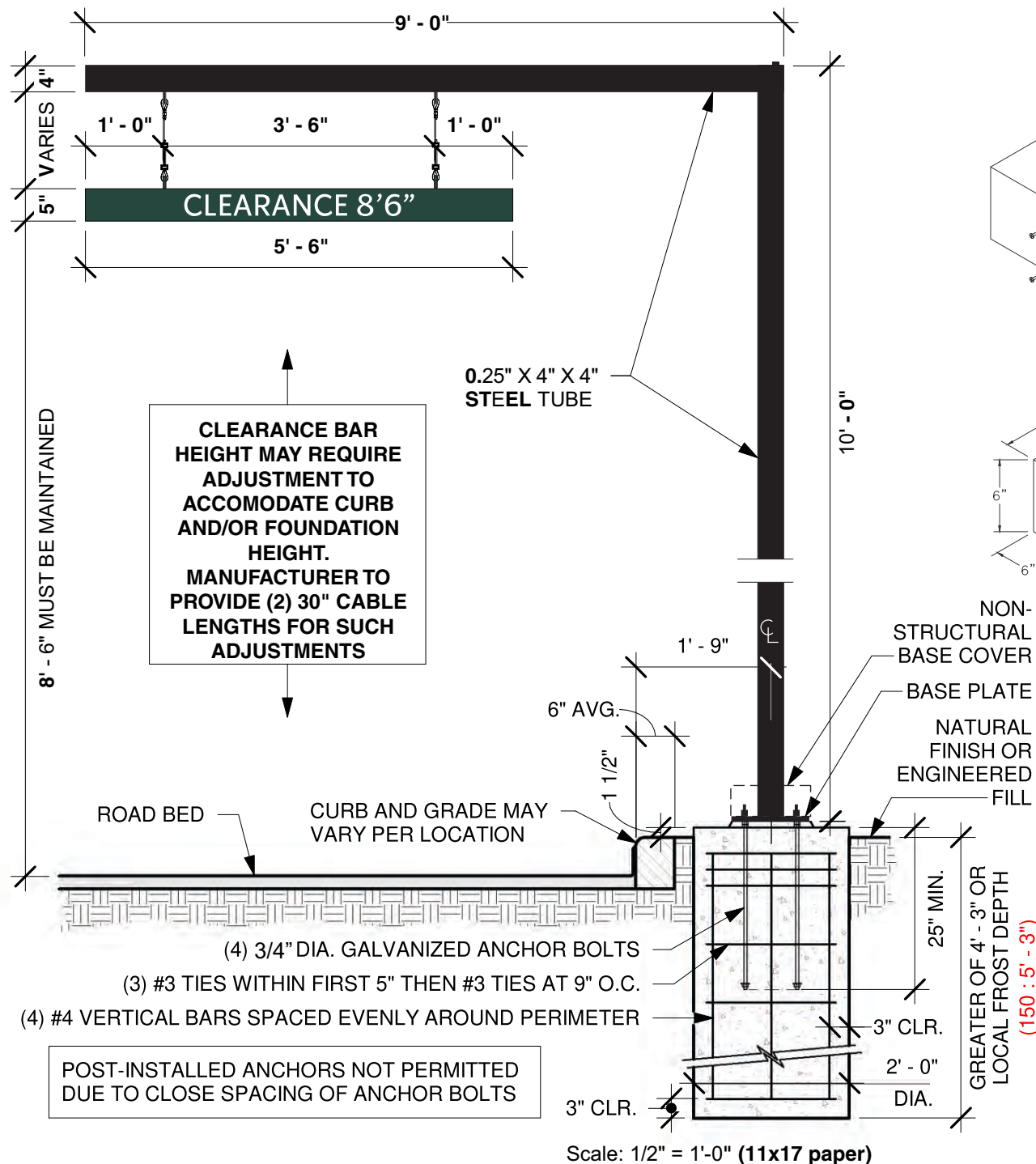
EST:	CLIENT:
SLS/PM:	LANDLORD:

THE INTENT OF THIS DRAWING IS TO SHOW A CONCEPTUAL REPRESENTATION OF THE PROPOSED SIGNAGE. DUE TO VARIATIONS IN PRINTING DEVICES AND SUBSTRATES, THE FINISHED PRODUCT MAY DIFFER SLIGHTLY FROM DRAWING.



E

E



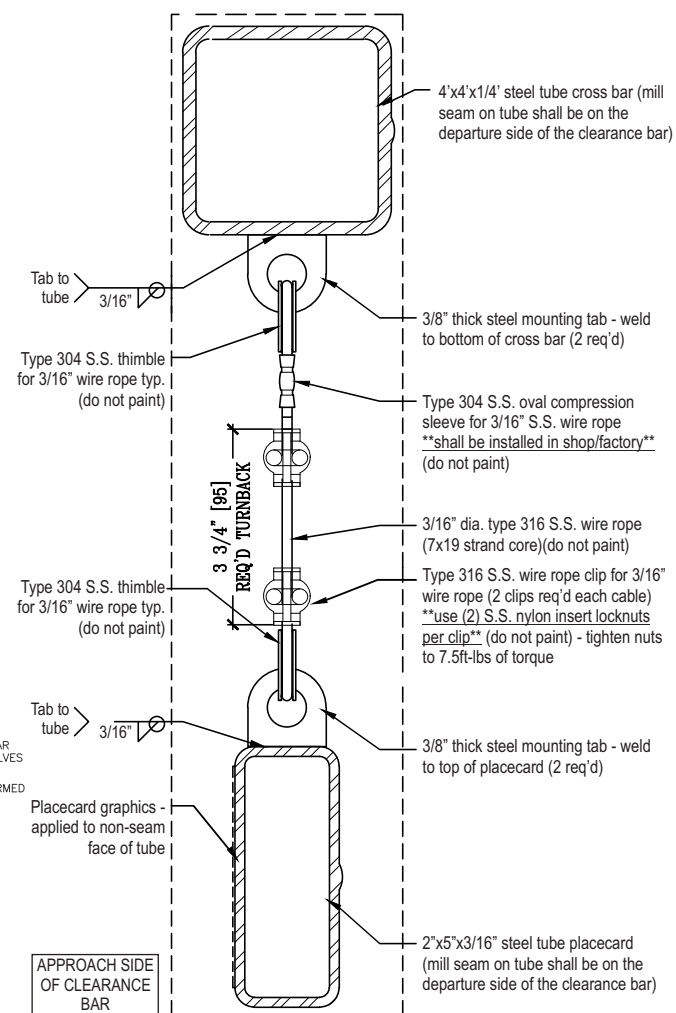
- 115 MPH wind load (150 MPH Wind Load)
- Category II, Exposure C
- Est. Combined Weight of Canopy & DOS: 993 Lbs.
- Concrete Strength: MN 3000 PSI @ 28 Days
- 2012 International Building Code, ASCE 7-10
- Vertical Soil Bearing Pressure: 2000 PSF

Rotate Footing Bolt pattern Relative To Drive Lane Per Site Plan & Signage Configuration Details.

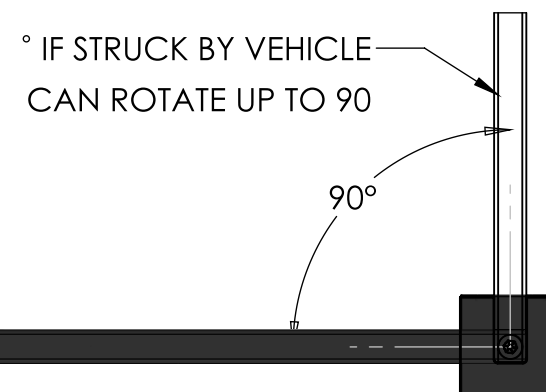
Route Conduit
Per Electrical
Site Plan Provide
3" Stub-Up




GC Responsible For Foundations & Footings On All Menu Boards & Drive-Thru Elements. Signage Vendor To Supply Templates & Install Menu Boards Only.

Dimensions in Red Are
For 150 MPH Wind Load

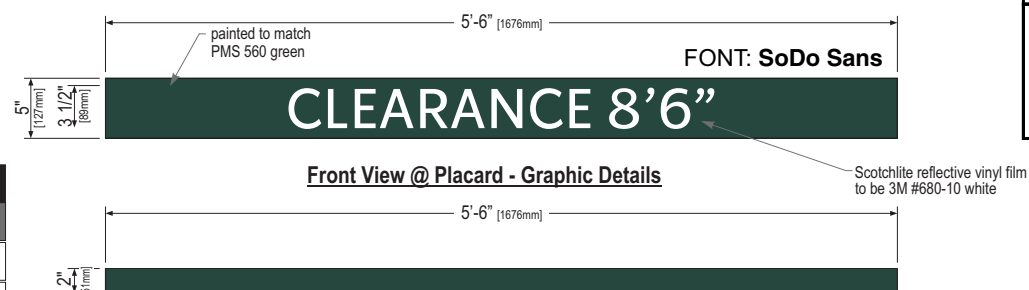


End Section View



COLOR LEGEND		
	PMS/PAINT	VINYL
	PMS 560 C	NA
	PSB 6865/ SATIN BLACK	3M 3630-22
	REFL. WHITE	3M 680-10

Front View @ Placard - Graphic Details



Bottom View @ Placard

Scale: $\frac{3}{4}" = 1'-0"$ (11x17 paper)

HILTONDISPLAYS

125 HILLSIDE DRIVE • GREENVILLE SC 29607
P 800 353 9132 • F 864 242 2204
www.hiltondisplays.com

QID 23-69250

JOB NAME

Starbucks 66359

LOCATION

1280 West Main Street
Whitewater, WI 53190

CUSTOMER CONTACT

SALESMAN / PM

Jo Hall

DESIGNER

Ben Tompsett

DWG. DATE

10-06-23

REV. DATE / REVISION

SCALE

As Noted

FILE

2023\Starbucks\Locations\
Whitewater WI\23-69250\
SB Whitewater WI 23-69250

DESIGN SPECIFICATIONS ACCEPTED BY:

EST:	CLIENT:
------	---------

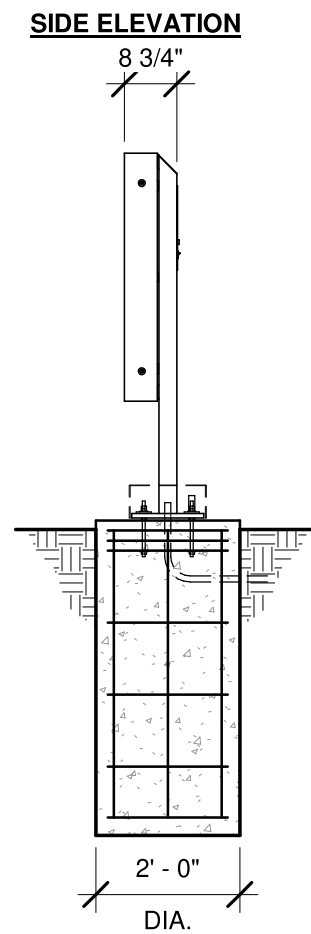
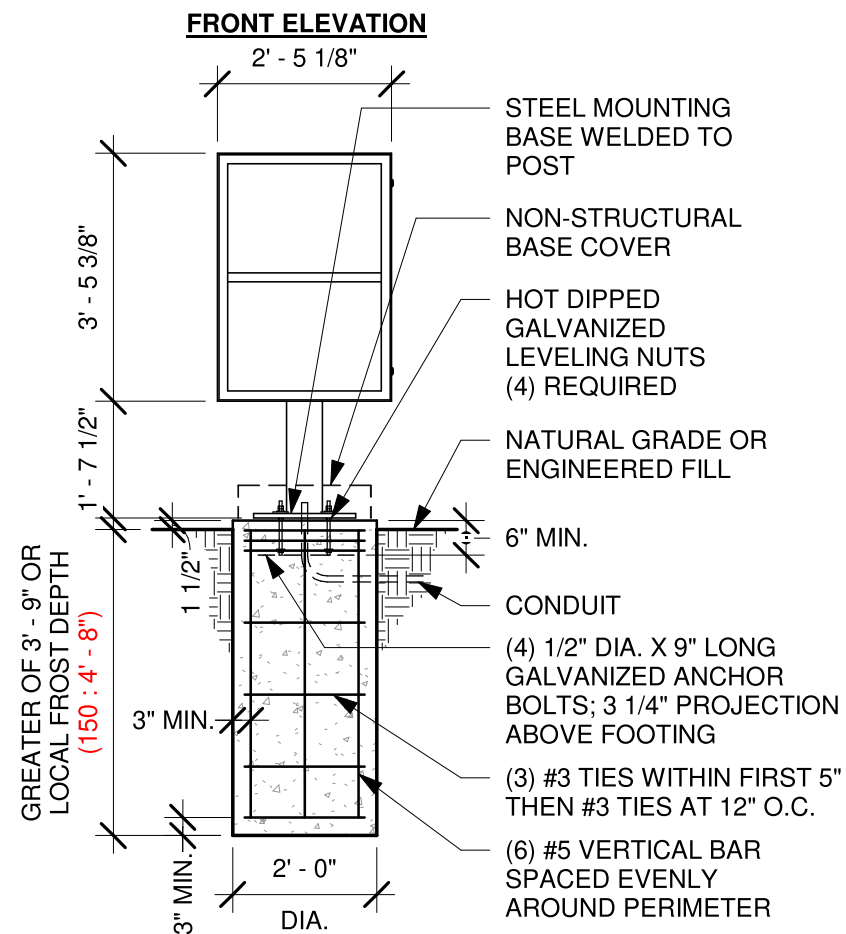
SLS/PM:	LANDLORD:
---------	-----------

THE INTENT OF THIS DRAWING IS TO SHOW A CONCEPTUAL REPRESENTATION OF THE PROPOSED SIGNAGE. DUE TO VARIATIONS IN PRINTING DEVICES AND SUBSTRATES, THE FINISHED PRODUCT MAY DIFFER SLIGHTLY FROM DRAWING.



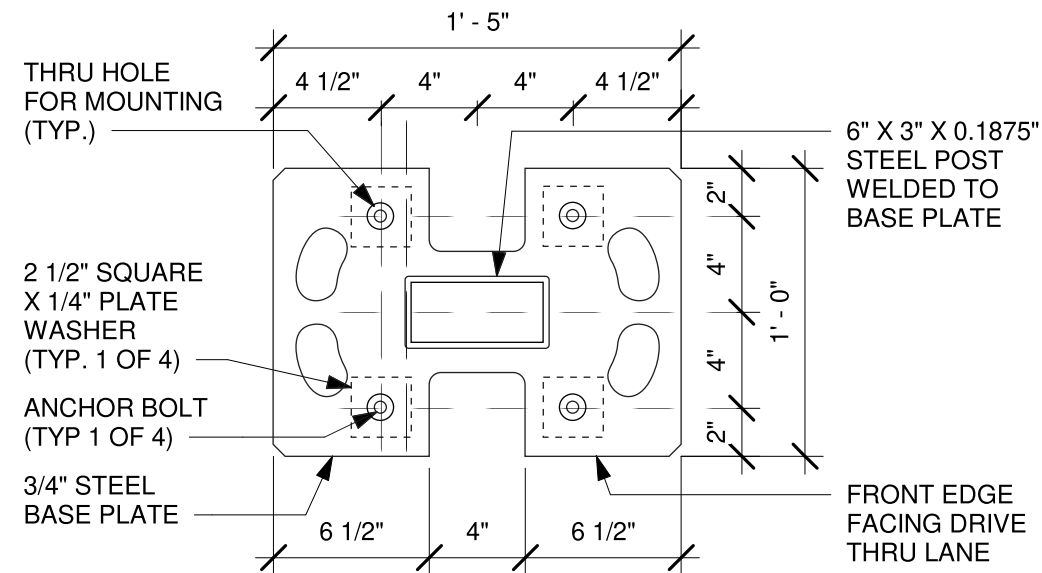
Qty. 2

F



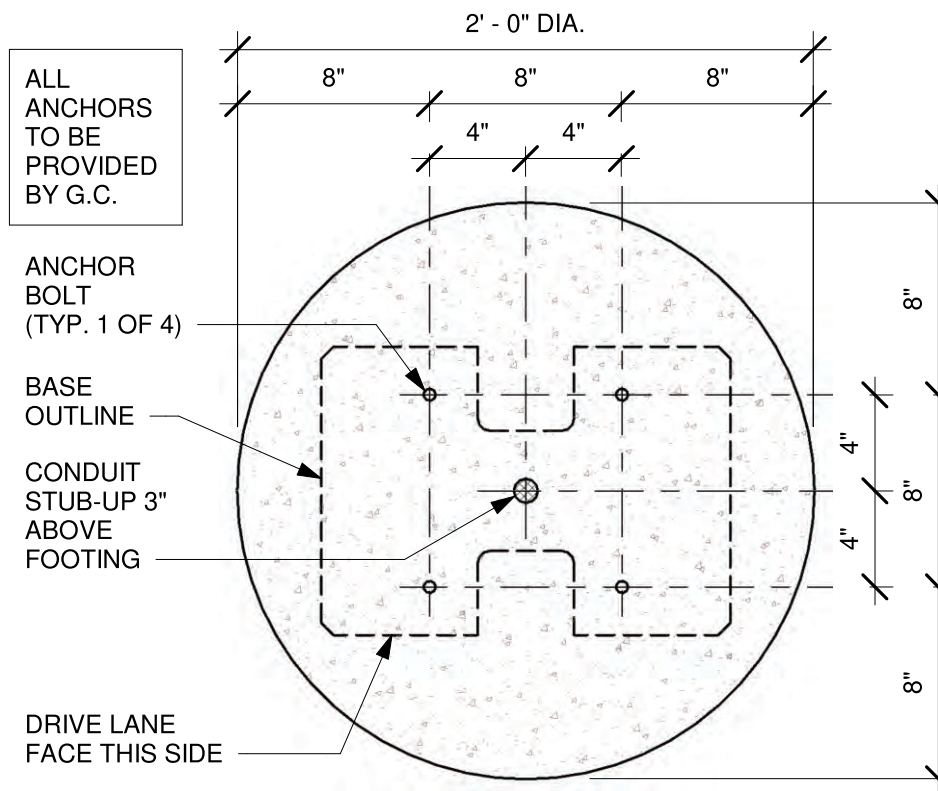
DT PRE-MENU GROUND FOOTING

Scale: $\frac{3}{8}" = 1'-0"$



BASE PLATE

scale: 1 1/2" = 1'



BOLT PATTERN (TOP VIEW)

Scale: 1 1/2" = 1'-0"

~~HILTON~~DISPLAYS

125 HILLSIDE DRIVE • GREENVILLE SC 29607
P 800 353 9132 • F 864 242 2204
www.hiltondisplays.com

QID 23-69250

JOB NAME

Starbucks 66359

LOCATION

1280 West Main Street
Whitewater, WI 53190

CUSTOMER CONTACT

SALESMAN / PM

Jo Hall

DESIGNER

Ben Tompsett

DWG. DATE

10-06-23

REV. DATE / REVISION

SCALE

As Noted

FILE

2023\Starbucks\Locations\
Whitewater WI\23-69250\
SB Whitewater WI 23-69250

DESIGN SPECIFICATIONS ACCEPTED BY:

EST:	CLIENT:
------	---------

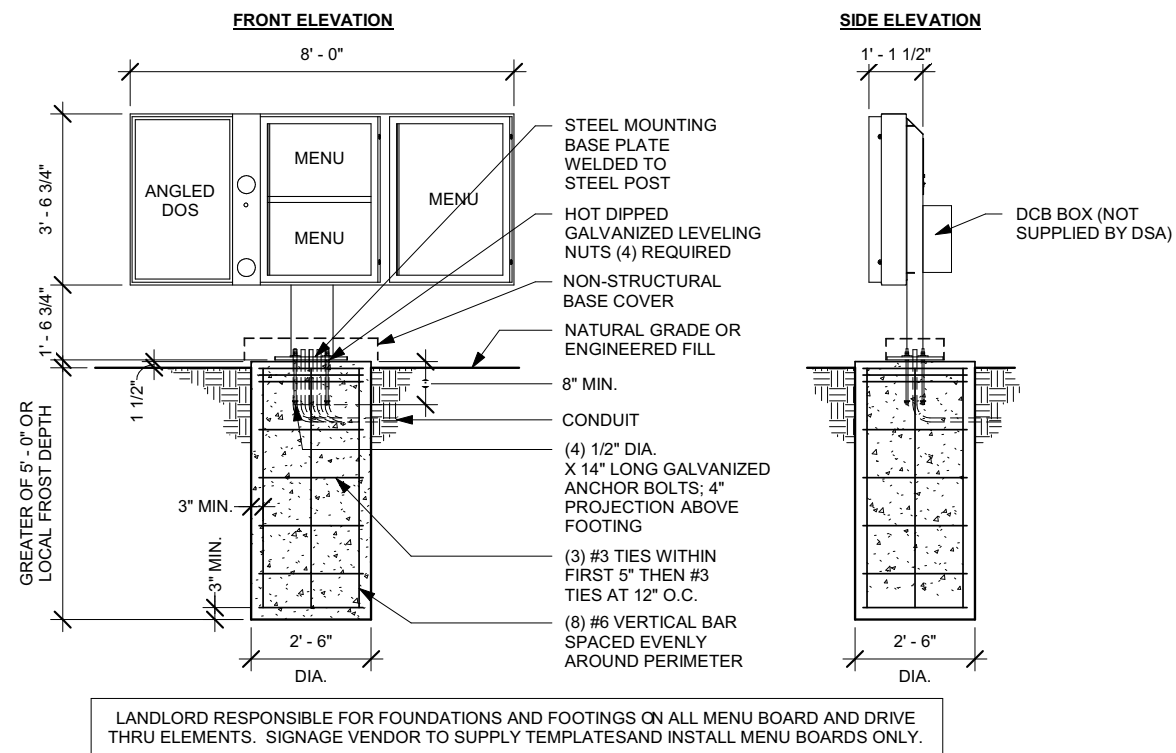
SLS/PM:	LANDLORD:
---------	-----------

THE INTENT OF THIS DRAWING IS TO SHOW A CONCEPTUAL REPRESENTATION OF THE PROPOSED SIGNAGE. DUE TO VARIATIONS IN PRINTING DEVICES AND SUBSTRATES, THE FINISHED PRODUCT MAY DIFFER SLIGHTLY FROM DRAWING.

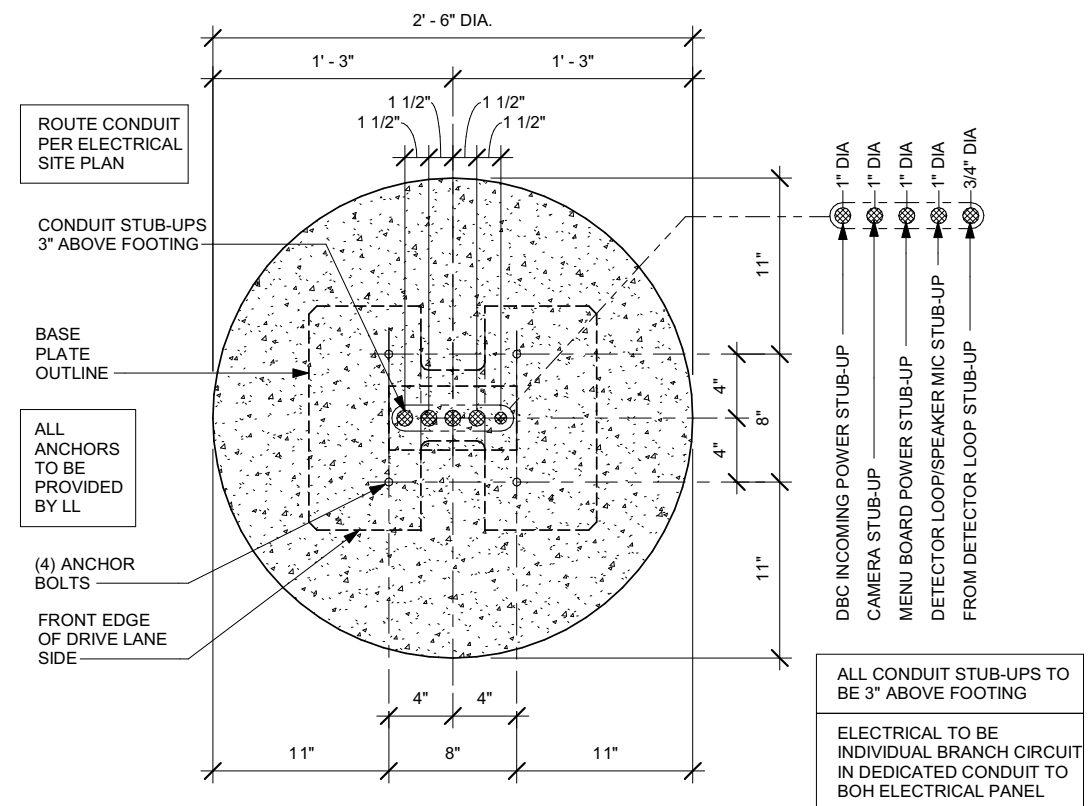


Qty. 1

G



1 DTE 3-PANEL MENU BOARD W/ DOS GROUND FOOTING



2 DTE 3-PANEL MENU BOARD W/ DOS BOLT PATTERN (TOP VIEW)
Scale: 1" = 1'-0"

~~HILTON~~DISPLAYS
125 HILLSIDE DRIVE • GREENVILLE SC 29607
P 800 353 9132 • F 864 242 2204
www.hiltondisplays.com

QID 23-69250

JOB NAME

Starbucks 66359

LOCATION

1280 West Main Street
Whitewater, WI 53190

CUSTOMER CONTACT

SALESMAN / PM

Jo Hall

DESIGNER

Ben Tompsett

DWG. DATE

10-06-23

REV. DATE / REVISION

SCALE

As Noted

FILE

2023\Starbucks\Locations\
Whitewater WI\23-69250\
SB Whitewater WI 23-69250

DESIGN SPECIFICATIONS ACCEPTED BY:

EST:	CLIENT:
SLS/PM:	LANDLORD:

THE INTENT OF THIS DRAWING IS TO SHOW A CONCEPTUAL REPRESENTATION OF THE PROPOSED SIGNAGE. DUE TO VARIATIONS IN PRINTING DEVICES AND SUBSTRATES, THE FINISHED PRODUCT MAY DIFFER SLIGHTLY FROM DRAWING.



18” x 12” PARKING SIGN

SBC-PK-1812-FP

Qty. 3

H



1 Front View
SCALE: 3" = 1'-0"

SPECIFICATIONS

- A. .090" ALUMINUM PARKING SIGN TO BE PAINTED TO PMS 560c
- B. FACE TO HAVE APPLIED DIGITALLY PRINTED VINYL GRAPHICS ON WHITE REFLECTIVE VINYL w/5/16" WHITE REFLECTIVE BORDER.
- C. SIGN PANEL TO BE FASTENED TO U-CHANNEL POST W/ 5/16"x2" BOLTS (QTY. 2)

Reflective White
(3M #280-10)

PMS 3425C

PMS 560C

HILTONDISPLAYS

125 HILLSIDE DRIVE • GREENVILLE SC 29607

P 800 353 9132 • F 864 242 2204

www.hiltondisplays.com

QID 23-69250	
JOB NAME	
Starbucks 66359	
LOCATION	
1280 West Main Street Whitewater, WI 53190	
CUSTOMER CONTACT	
SALESMAN / PM	
Jo Hall	
DESIGNER	
Ben Tompsett	
DWG. DATE	
10-06-23	
REV. DATE / REVISION	
SCALE	
As Noted	
FILE	
2023\Starbucks\Locations\ Whitewater WI\23-69250\ SB Whitewater WI 23-69250	
DESIGN SPECIFICATIONS ACCEPTED BY:	
EST:	CLIENT:
SLS/PM:	LANDLORD:
THE INTENT OF THIS DRAWING IS TO SHOW A CONCEPTUAL REPRESENTATION OF THE PROPOSED SIGNAGE. DUE TO VARIATIONS IN PRINTING DEVICES AND SUBSTRATES, THE FINISHED PRODUCT MAY DIFFER SLIGHTLY FROM DRAWING.	

UL

Underwriters
Laboratories Inc.

DRY

DAMP

WET

D/F ILLUMINATED MONUMENT

SBC-S23070-MON-IL-72

Qty. 1



Scale: 3/4" = 1' (11x17 paper)

- Double Faced Illuminated Monument Sign.
- Aluminum construction & aluminum skin with painted finishes.
- .125" thick face to be routed to accommodate push thru graphics.
- .375" Push thru graphics to have 3M vinyl applied to first and second surface.
- Illuminated with white LED modules with all electrical UL listed and labeled.
- Monument to be bolted to new concrete footing per engineering for site location and soil condition.

Colors:

- Painted Pantone #560 (satin finish)
- Painted Pantone 419 Black (RAL 7021M) (satin finish)
- Clear Acrylic (push thru)
- 3M 3630-126 Dark Emerald Green Translucent Vinyl (first surface)
- 3M White Translucent Vinyl (first surface)
- 3M Diffuser Film (second surface)

125 HILLSIDE DRIVE • GREENVILLE SC 29607
P 800 353 9132 • F 864 242 2204
www.hiltondisplays.com

QID 23-69250
JOB NAME
Starbucks 66359
LOCATION
1280 West Main Street Whitewater, WI 53190
CUSTOMER CONTACT
SALESMAN / PM
Jo Hall
DESIGNER
Ben Tompsett
DWG. DATE
10-06-23
REV. DATE / REVISION
SCALE
As Noted
FILE
2023\Starbucks\Locations\ Whitewater WI\23-69250\ SB Whitewater WI 23-69250

DESIGN SPECIFICATIONS ACCEPTED BY:

EST:	CLIENT:
SLS/PM:	LANDLORD:

THE INTENT OF THIS DRAWING IS TO SHOW A CONCEPTUAL REPRESENTATION OF THE PROPOSED SIGNAGE. DUE TO VARIATIONS IN PRINTING DEVICES AND SUBSTRATES, THE FINISHED PRODUCT MAY DIFFER SLIGHTLY FROM DRAWING.

Underwriters Laboratories Inc.

DRY	
DAMP	
WET	