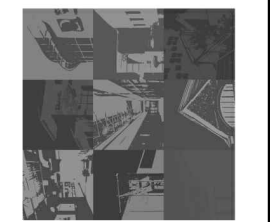


ELECTRICAL SITE PLAN
SCALE: 1"=80'-0"

PROJECT NO:
26091
DRAWN BY: S.M.B. CHECKED BY: D.B.K.
DATE: 05.04.26
SHEET NO.:



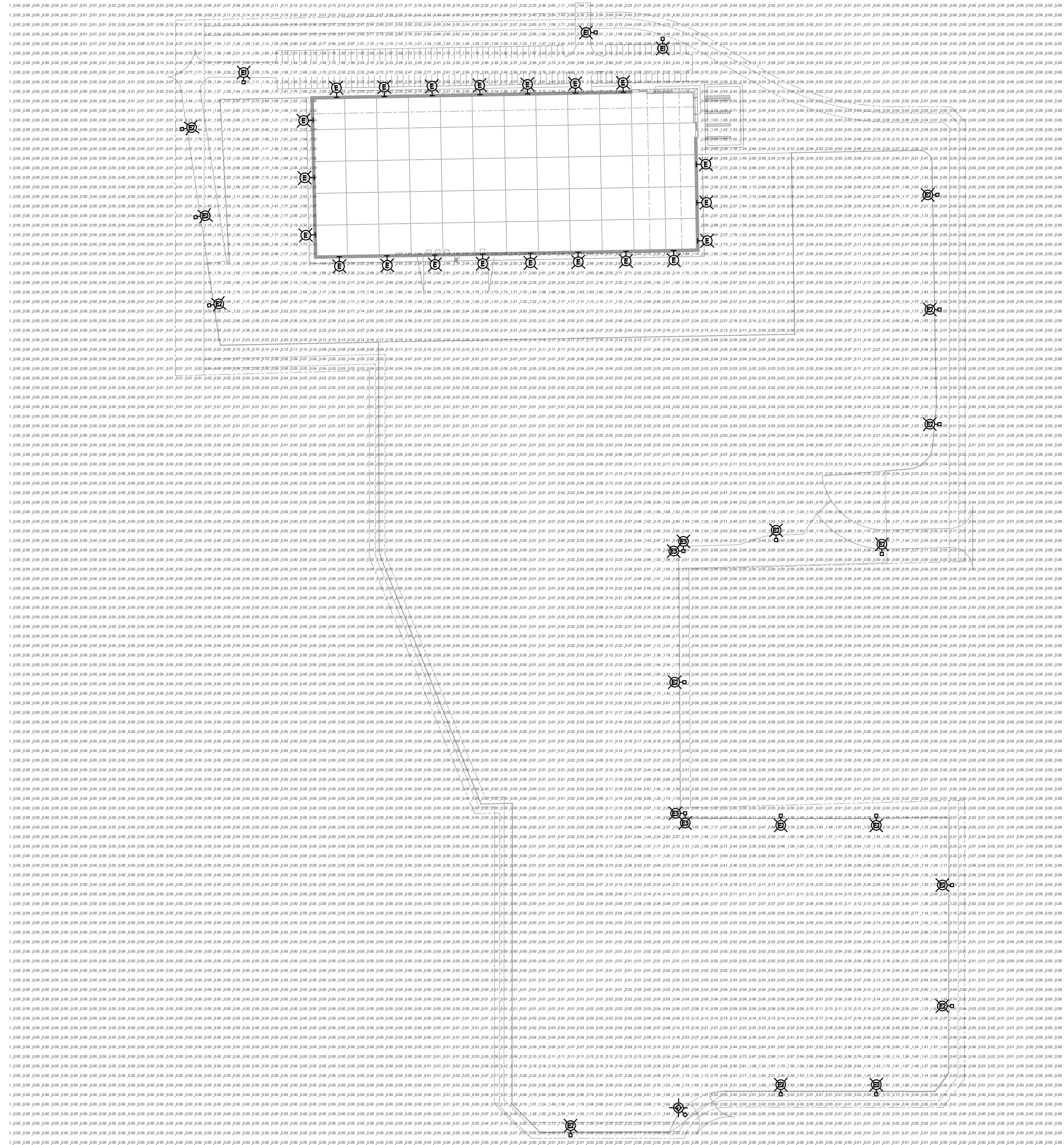
Partners in Design
ARCHITECTS

2610 Lake Cook Road
Suite 280
Riverside, IL 60015
Ph.: (647) 940-0300
www.pdarchitects.com

SUMMERSET MARINE
Whitewater Technology Park, Whitewater, WI
ELECTRICAL SITE PLAN

REVISIONS

E10



**LIGHTING ANALYSIS NOTES:
(CAR PARKING)**

1. AVERAGE FOOTCANDLES: 2.36
2. MAXIMUM FOOTCANDLES: 3.76
3. MINIMUM FOOTCANDLES: 1.08
4. MAXIMUM/MINIMUM RATIO: 3.5:1
5. AVERAGE/MINIMUM RATIO: 2.2:1

**LIGHTING ANALYSIS NOTES:
(PAVED TRUCK AREA)**

1. AVERAGE FOOTCANDLES: 1.25
2. MAXIMUM FOOTCANDLES: 3.39
3. MINIMUM FOOTCANDLES: 0.06
4. MAXIMUM/MINIMUM RATIO: 56.5:1
5. AVERAGE/MINIMUM RATIO: 20.8:1

**LIGHTING ANALYSIS NOTES:
(GRAVEL TRUCK AREA)**

1. AVERAGE FOOTCANDLES: 0.31
2. MAXIMUM FOOTCANDLES: 3.91
3. MINIMUM FOOTCANDLES: 0.0
4. MAXIMUM/MINIMUM RATIO: NA
5. AVERAGE/MINIMUM RATIO: NA

PHOTOMETRIC SITE PLAN
SCALE: 1"=60'-0"

SUMMERSET MARINE
Whitewater Technology Park, Whitewater, WI
PHOTOMETRIC SITE PLAN

2610 Lake Cook Road
Suite 200
Riverview, IL 60015
Ph: (847) 940-0300
www.pdarchitects.com

Partners in Design
ARCHITECTS



PROJECT NO:
26091

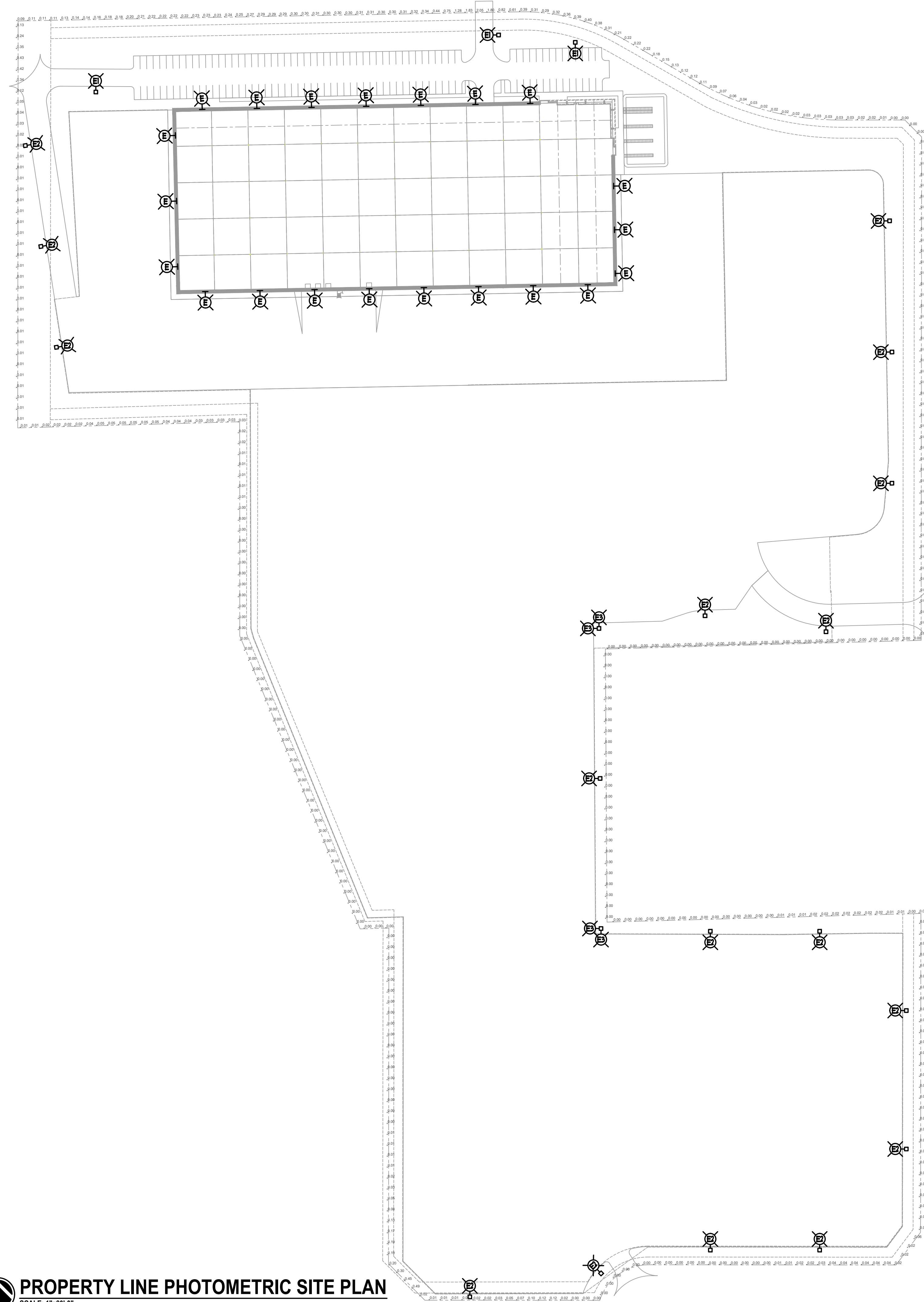
DRAWN BY: S.M.B. CREDITED BY: D.B.K.

DATE:
05.04.26

SHEET NO:

KORNACKI & ASSOCIATES, INC.
Electrical Design Consultants
262-704-3323
2845 S. Moorland Rd., New Berlin, WI 53151





LIGHTING ANALYSIS NOTES:

1. MAXIMUM AT PROPERTY LINE IS LESS THAN 0.5 FC EXCEPT AT ENTRANCE TO CAR PARKING OFF INNOVATION DRIVE.

PROPERTY LINE PHOTOMETRIC SITE PLAN
SCALE: 1"=80'-0"



FIXTURE SCHEDULE																
TYPE	INPUT WATTS	VOLTS	LUMENS	COLOR TEMP	CRI		DESCRIPTION	MANUFACTURER	CATALOG NUMBER	BUG RATING	SHIELDING	FINISH	MOUNTING	CONTROLS		SEE NOTES
					70+	80+								90+	INTEGRAL	
E	185	277	22541	4000K	●		EXTERIOR WALL BRACKET	LITHONIA	DSX1 LED- P7-40K-70CRI-T4M-XVOLT-WBA-NLTAIR2-PIRHN	305	ACRYLIC	SBA	WALL 30"-0" AFG		PHOTO-ON TC-OFF	#1
E1	185	277	22210	4000K	●		POLE & LUMINAIRE	LITHONIA	DSX1 LED- P7-40K-70CRI-T3M-XVOLT-SPA-NLTAIR2-PIRHN	305	ACRYLIC	SBA	POLE - SEE DETAIL #1		PHOTO-ON TC-OFF	#1
E2	185	277	16685	4000K	●		POLE & LUMINAIRE	LITHONIA	DSX1 LED- P7-40K-70CRI-BLCA-XVOLT-SPA-NLTAIR2-PIRHN	004	ACRYLIC	SBA	POLE - SEE DETAIL #2		PHOTO-ON TC-OFF	#1
E3	(2) 185	277	(2) 16685	4000K	●		POLE & LUMINAIRE	LITHONIA	(2) DSX1 LED- P7-40K-70CRI-BLCA-XVOLT-SPA-NLTAIR2-PIRHN	004	ACRYLIC	SBA	POLE - SEE DETAIL #2		PHOTO-ON TC-OFF	#1

FIXTURE SCHEDULE NOTES:

1. EACH LIGHT FIXTURE TO HAVE MOTION SENSOR CONTROL. LIGHT FIXTURES TO DIM TO 33% AFTER 15 MINUTES OF NO MOTION DETECTED. ALL LIGHTS ON THAT CIRCUIT TO COME TO FULL BRIGHTNESS WHEN ONE MOTION SENSOR IS ACTIVATED ON THAT CIRCUIT.

SYMBOLS / ABBREVIATIONS	
	WALL BRACKET/WALL SCONCE FIXTURE - SEE FIXTURE SCHEDULE
	SURFACE/PENDANT FIXTURE - SEE FIXTURE SCHEDULE
	RECESSED DOWNLIGHT FIXTURE - SEE FIXTURE SCHEDULE
	POLE & LUMINAIRE(S) FIXTURE - SEE FIXTURE SCHEDULE
	SWITCHED CIRCUIT
	BRANCH CIRCUIT
	ABOVE FINISHED FLOOR
	ABOVE FINISHED GRADE
	ARC FAULT INTERRUPTER
	AMPERS/AMPERAGE
	AUDIO VISUAL
	BATTERY BACKUP
	BELOW FINISHED CEILING
	BUILT-IN OVERLOAD
	BREAKER
	BAKED WHITE ENAMEL
	COLOR BY ARCHITECT
	CIRCUIT CONTROL PANEL
	CIRCUIT CONTROL
	CONTROL
	DOCK EQUIPMENT CONTROL PANEL
	DISCONNECT
	ELECTRICAL CONTRACTOR
	EMERGENCY
	EXISTING RELOCATED
	ELECTRONIC TIME CLOCK CONTROL
	EXISTING TO REMAIN
	EXISTING TO BE DEMO'D
	EXISTING TO BE RELOCATED
	ELECTRIC WATER COOLER
	FIRE ALARM ANNUNCIATOR PANEL
	FIRE ALARM CONTROL PANEL
	FULL LOAD AMPS
	FLOAT SWITCH
	FIRE PROTECTION CONTRACTOR
	FURNISHED
	GENERAL CONTRACTOR
	GROUND FAULT CIRCUIT INTERRUPTER
	HAND-OFF-AUTOMATIC SWITCH
	HORSEPOWER
	HEATING AND VENTILATING CONTRACTOR
	ISOLATED GROUND
	INTEGRAL
	IN ROOM
	IN UNIT
	JUNCTION BOX
	KILOWATTS
	LIGHTING CONTROL PANEL
	LOCATION
	LOW TEMPERATURE
	LIGHT SWITCH
	MAGNETIC STARTER
	MANUAL STARTER
	MINIMUM CIRCUIT AMPS
	MANUAL STARTER WITH PILOT LIGHT
	NIGHT LIGHT
	NEAR UNIT
	OVERHEAT PROTECTION
	OCCUPANCY SENSOR
	ON UNIT
	PUSH BUTTON
	PLUMBING CONTRACTOR
	PNEUMATIC ELECTRIC SWITCH
	PHOTOCELL
	PREWIRED
	REFRIGERATION CONTRACTOR
	REFRIGERATION CONTROL CONTRACTOR
	RECEPTACLE
	SELECTED BY ARCHITECT
	SEPARATE CIRCUIT
	SPEED SWITCH
	SOFT START
	SHUNT TRIP
	SWITCH
	LINE VOLTAGE THERMOSTAT
	TO BE DETERMINED
	TIME CLOCK
	TEMPERATURE CONTROL CONTRACTOR
	TEMPERATURE CONTROL PANEL
	UNIT MANUFACTURER
	UNLESS NOTED OTHERWISE
	VARIABLE FREQUENCY DRIVE
	WATTS
	WEATHER PROOF ("WHILE-IN-USE")
	TRANSFORMER

D-Series Size 1 LED Area Luminaire

Specifications

EPA: 0.69 ft² (0.06 m²)
 Length: 32.71" (831 mm)
 Width: 14.26" (362 mm)
 Height H1: 7.88" (200 mm)
 Height H2: 2.73" (69 mm)
 Weight: 34 lbs (15.4 kg)

Introduction
 The modern styling of the D-Series features a highly refined aesthetic that blends seamlessly with its environment. The D-Series offers the benefits of the latest in LED technology into a high performance, high efficacy, long-life luminaire.
 The photometric performance results in sites with excellent uniformity, greater pole spacing and lower power density. D-Series outstanding photometry aids in reducing the number of poles required in area lighting applications with typical energy savings of 65% and expected service life of over 100,000 hours.

Ordering Information EXAMPLE: DSX1 LED P7 40K 70CRI T3M MVOLT SPA NLTAIR2 PIRHN DDBXD

Series	LEDs	Color temperature	Color Rendering Index	Distribution	Voltage	Mounting	Shipped Included		
DSX1 LED	F1	30K	3000K	70CRI	AFR Automotive front row	TSM Type I medium	WVOLT (120V-277V) ¹	SRA Square pole mounting (US drilling)	
	F2	40K	4000K	70CRI	T1S Type I short	TS6 Type I low glare	WVOLT (147V-480V) ¹	RPA Round pole mounting (US drilling)	
	F3	50K	5000K	70CRI	T3M Type II medium	BLC3 Type III wide	WVOLT (277V-480V) ¹	SPAS Square pole mounting #5 drilling ¹	
	F4	P8	50K	5000K	70CRI	T3M Type II medium	BLC3 Type III backlight control ¹	208-240 ¹	SPAN Square narrow pole mounting #8 drilling
	P5	P8	50K	5000K	70CRI	T3M Type II medium	TLG3 Type III low glare ¹	240-280 ¹	SPAN Square narrow pole mounting #8 drilling
	P6	P8	50K	5000K	70CRI	T3M Type II medium	TLG3 Type III backlight control ¹	240-280 ¹	SPAN Square narrow pole mounting #8 drilling
	P7	P8	50K	5000K	70CRI	T3M Type II medium	TLG3 Type III backlight control ¹	240-280 ¹	SPAN Square narrow pole mounting #8 drilling
	P8	P8	50K	5000K	70CRI	T3M Type II medium	TLG3 Type III backlight control ¹	240-280 ¹	SPAN Square narrow pole mounting #8 drilling
	P9	P8	50K	5000K	70CRI	T3M Type II medium	TLG3 Type III backlight control ¹	240-280 ¹	SPAN Square narrow pole mounting #8 drilling
	P10	P11	50K	5000K	70CRI	T3M Type II medium	TLG3 Type III backlight control ¹	240-280 ¹	SPAN Square narrow pole mounting #8 drilling

1 Acuity Way • Decatur, Georgia 30035 • Phone: 1-800-705-SERV (7378) • www.lithonia.com
 © 2011-2025 Acuity Brands Lighting, Inc. All rights reserved.

LITHONIA LIGHTING

FEATURES & SPECIFICATIONS

INTENDED USE — These specifications are for USA standards only. Square Straight Steel is a general purpose light pole for up to 39-foot mounting heights. This pole provides a robust yet cost effective option for mounting area lights and floodlights.

CONSTRUCTION — Pole shaft is of uniform diameter and wall thickness, and is made of a weather-grade, hot-rolled, commercial quality steel tubing with a minimum yield of 55 KSI (11-gauge, 0.1075") or 50 KSI (12-gauge, 0.1175"). Shaft is one-piece with a full-length longitudinal high-frequency electric resistance weld. Uniformly square in cross-section with flat sides, small corner radii and excellent torsional qualities. Available shaft widths are 4", 5" and 6".

Pole Top Options include 4" iron top, drilled for side-mount fixture, lens with drilling (includes extra handle) and opening top. Side drilled and open top poles include a removable top cap.

Handle: A reinforced handle with grounding provision is provided at 18" from the base on side A. Positioning the handle lower may not be possible and requires engineering review; consult Tech Support-Outdoor for further information. Every handle includes a cover and cover attachment hardware. The handle has a nominal dimension of 4" x 5".

Base Cover: A durable ABS plastic two-piece full base cover, finished to match the pole, is provided with each pole assembly. Additional base cover options are available upon request.

Anchor Base/Bolts: Anchor base is fabricated from steel that meets ASTM A36 standards and can be altered to match existing foundations; consult factory for modifications. Anchor bolts are manufactured to ASTM A154 Standard grade 55, SS K31 minimum yield strength and tensile strength of 75-90 KSI. Top threaded portion (nominal 12") is hot-dipped galvanized per ASTM A-153.

HARDWARE — All structural fasteners are high-strength galvanized carbon steel. All non-structural fasteners are galvanized or zinc-plated carbon steel or stainless steel.

GROUNDING — Provision located immediately inside handle rim. Grounding hardware not included (provided by others).

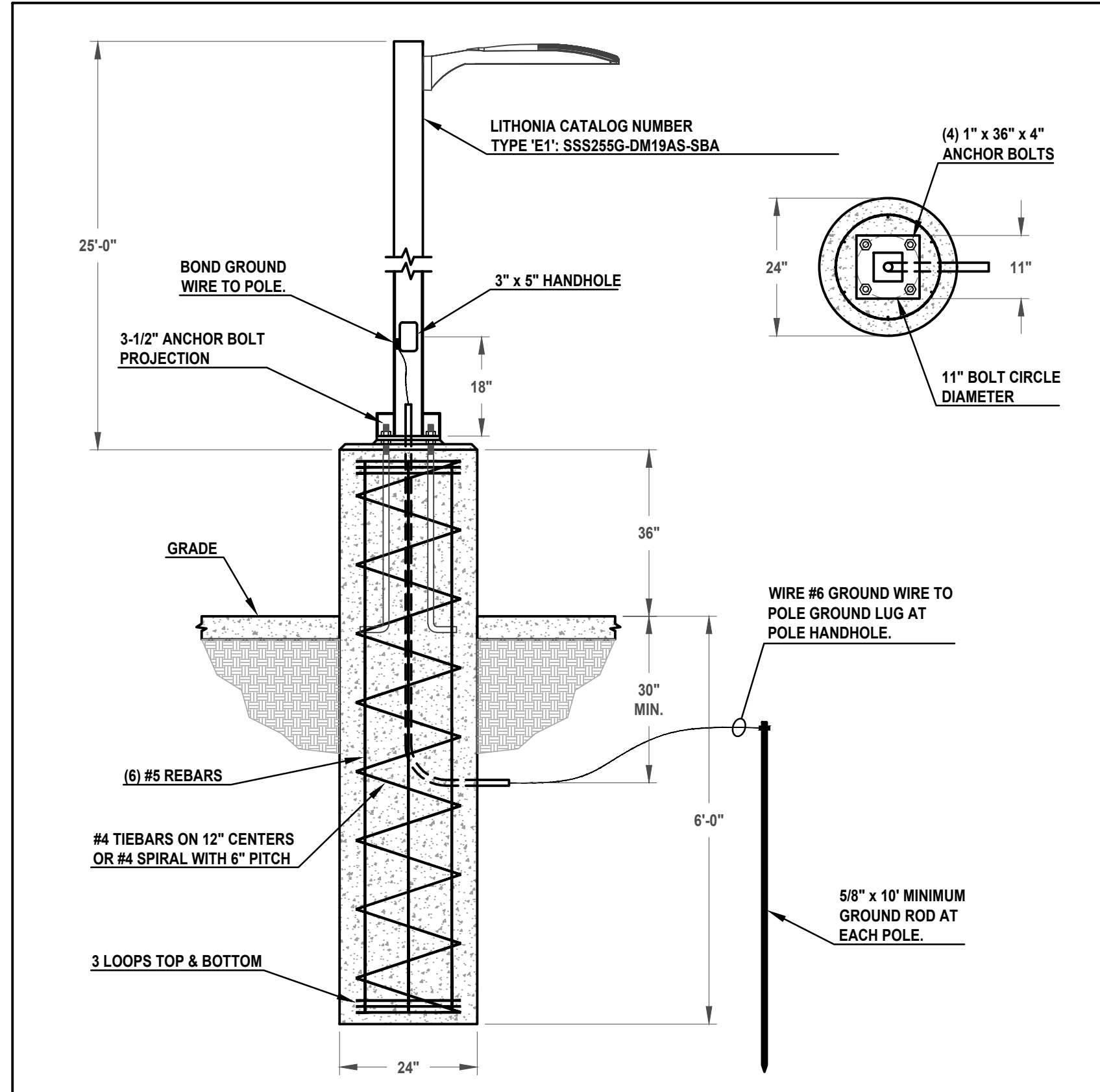
FINISH — Exterior of pole and base plate is protected by a zinc-influenced TGIC (triglycidyl isocyanate) powder coat finish that provides superior resistance to corrosion and weathering and meets SA and SR classifications of ASTM D3359. A tightly controlled multi-stage process ensures superior adhesion as well as a minimum finish thickness of 3 mils. Architectural Colors and Special Finishes are available by quote and include, but are not limited to: Paint over Hot-dipped Galvanized, RAL Colors, Custom Colors and Extended Warranty Finishes.

GOVERNMENT PROCUREMENT — BAA — Buy American(s) Act: Product qualifies as a domestic end product under the Buy American Act as implemented in the FAR and DFARS. Product also qualifies as manufactured in the United States under DOT Buy America regulations. BABA — Buy American Buy America Act: Product qualifies as produced in the United States under the definitions of the Buy America, Buy American Act. Please refer to www.acuitybrands.com/buy-american for additional information.

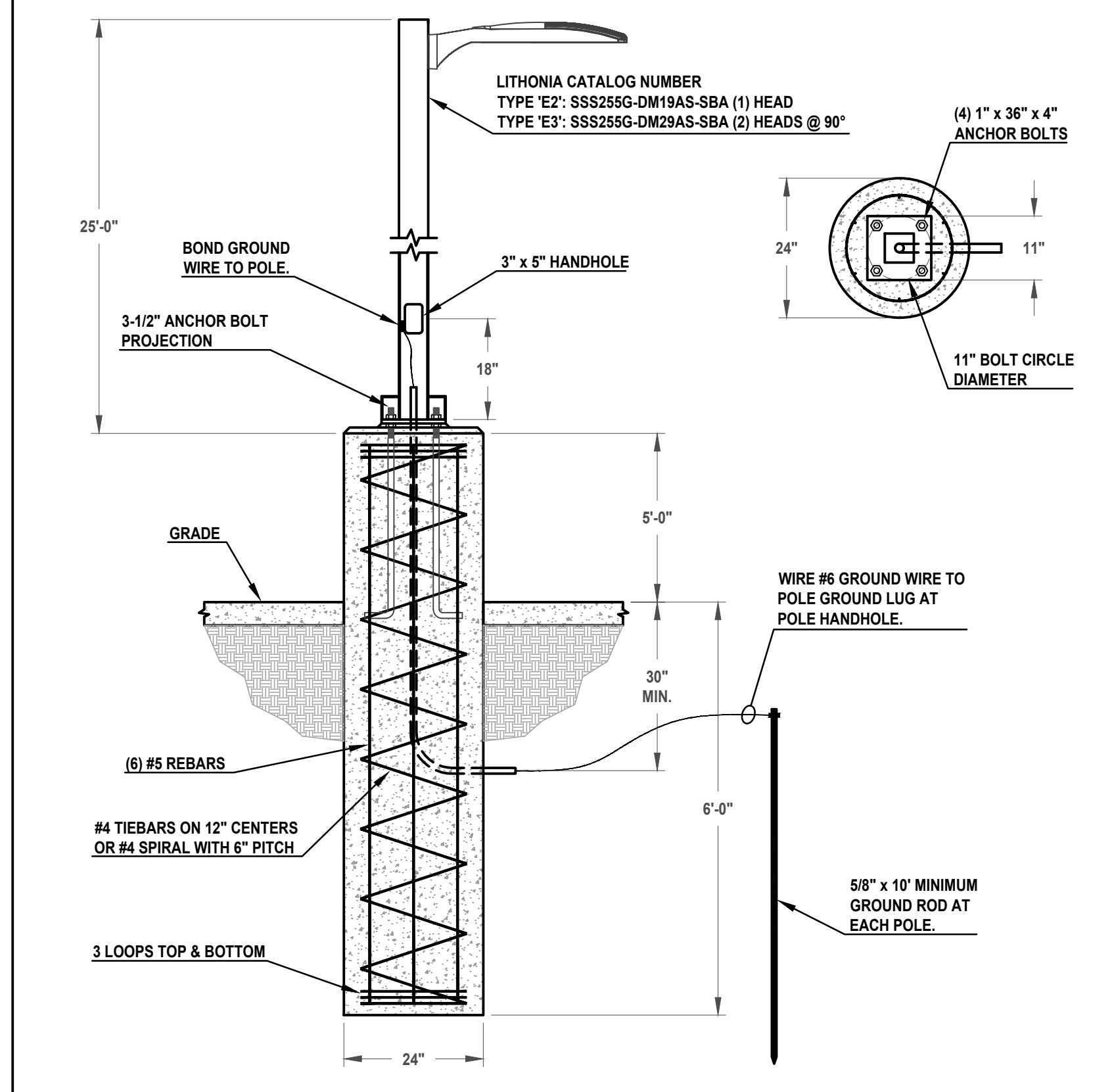
INSTALLATION — Do not erect poles without having fixtures installed. Factory-supplied templates must be used when setting anchor bolts. Lithonia Lighting will not accept claim for incorrect anchorage placement due to failure to use Lithonia Lighting factory templates. If poles are stored outside, all protective wrapping must be removed immediately upon delivery to prevent finish damage. Lithonia Lighting is not responsible for the foundation design.

WARRANTY — 1-year limited warranty. This is the only warranty provided and no other statements in this specification sheet create any warranty of any kind. All other express and implied warranties are disclaimed. Complete warranty terms located at: www.acuitybrands.com/support/warranty-terms-and-conditions

NOTE: Actual performance may differ as a result of end-user environment and application. Specifications subject to change without notice.



1 ELECTRICAL FIXTURE TYPE 'E1' MOUNTING DETAIL NOT TO SCALE



2 ELECTRICAL FIXTURE TYPE 'E2' & 'E3' MOUNTING DETAIL NOT TO SCALE

SUMMERSET MARINE
 Whitewater Technology Park, Whitewater, WI
 SCHEDULES & DETAILS

2610 Lake Cook Road
 Suite 280
 Riverwoods, IL 60015
 Ph.: (847) 940-0300
 www.pdaarchitects.com

Partners in Design
 ARCHITECTS

PROJECT NO.: 26091
 DRAWN BY: S.M.B. CHECKED BY: D.B.K.
 DATE: 05.04.26
 SHEET NO.:

E20

KORNACKI & ASSOCIATES, INC.
 Electrical Design Consultants
 262-784-3323
 2845 S. Moorland Rd., New Berlin, WI 53151