

ROSA'S PIZZA

178 W. Main Street, Whitewater, WI

DRAWING INDEX:

- SP-1 SITE PLAN, DRAWING INDEX
- A-1 MAIN FLOOR PLANS, LEGEND
- A-2 ADA DETAILS, FIRE SEPARATION DETAILS
- EM-1 EGRESS LIGHTING PLAN

PROJECT DESCRIPTION:

X

IEBC LEVEL III ALTERATION AT MAIN FLOOR ONLY.

BUILDING INFORMATION:

CONSTRUCTION TYPE:	TYPE VB
BUILDING FOOTPRINT:	6,511 S.F.
ALTERED AREA:	XXXX S.F.
NO. OF FLOORS:	2
OCCUPANCY GROUP:	A-3 / R-2
SPRINKLERED:	NONE

VERIFY ALL CONDITIONS AND DIMENSIONS ON THE JOB AND NOTIFY THE DESIGN ALLIANCE ARCHITECTS, INC. OF ANY DISCREPANCIES PRIOR TO START.



ALL DRAWINGS ARE
1/2 SCALE SHOWN
PRELIMINARY
NOT FOR
CONSTRUCTION

20
SP1

SITE PLAN

SCALE: APPROX. 1" = 200'
2017/ROSAS PIZZA.RP-DRAWINGS.DWG
DATE: FEBRUARY 16, 2018



1003 Madison Avenue
Fort Atkinson, WI

(920) 563-3404

ROSA'S PIZZA
178 W. Main Street
Whitewater, WI

DRAWING NAMES

SITE PLAN
DRAWING INDEX

REVISIONS

PROJECT DATA

DATE: 2/23/2018
DRAWN BY: CL
CHECKED BY: P.W.
SHEET NO.

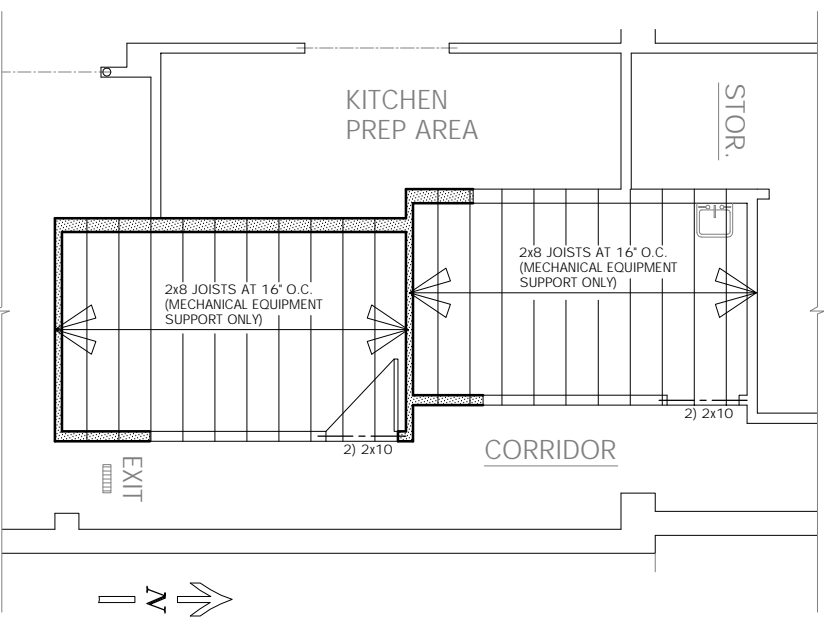
SP-1



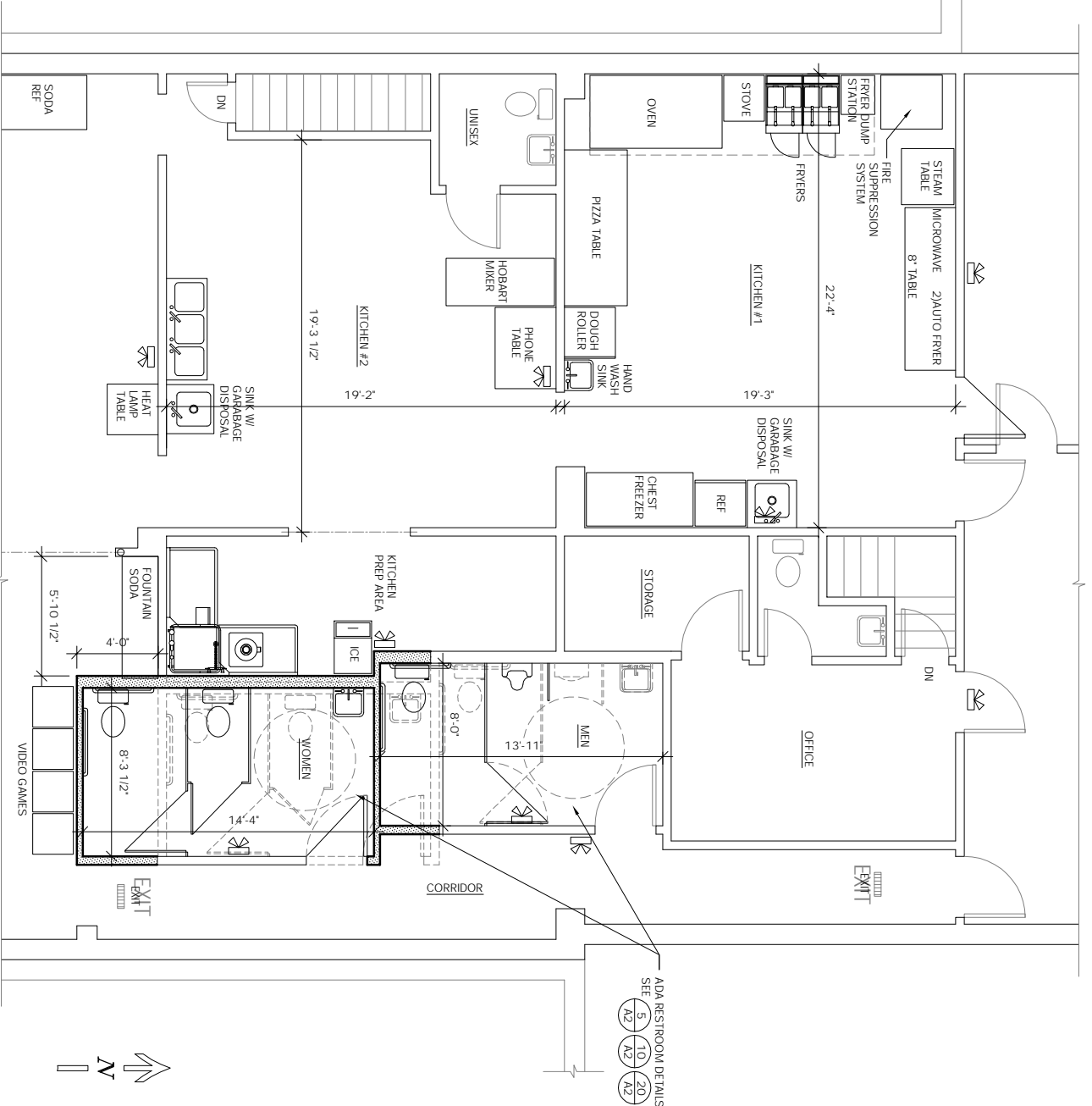
- LEGEND:**
- NEW DOOR WITH ADA COMPLIANT LEVER HANDLE
 - EXISTING DOOR TO REMAIN WITH ADA COMPLIANT LEVER HANDLE
 - EXISTING DOOR TO BE REMOVED
 - NEW WALL: 2x4 STUDS AT 16" O.C. (2x6 PLUMBING WALL WITH 1/2" DRYWALL ON BOTH SIDES)
 - EXISTING WALL
 - EXISTING WALLS TO BE REMOVED
 - EXISTING ILLUMINATED EXIT SIGN WITH EMERGENCY LIGHTS AND 90 MINUTE MIN. BATTERY BACK-UP, TYP.
 - NEW APPROVED ILLUMINATED EXIT SIGN WITH EMERGENCY LIGHTS AND 90 MINUTE MIN. BATTERY BACK-UP, TYP.
 - APPROVED EMERGENCY LIGHTING WITH 90 MINUTE MIN. BATTERY BACK-UP, TYP. -- SEE EGRESS LIGHTING PLAN SHEET EM-1
 - PROVIDE FIRE EXTINGUISHERS - CONFIRM REQUIREMENTS WITH LOCAL FIRE INSPECTOR
 - SMOKE DETECTOR - HARD-WIRED WITH BATTERY BACK-UP, TYP.
 - CARBON MONOXIDE DETECTOR - HARD-WIRED WITH BATTERY BACK-UP, TYP.

LEGEND
 SCALE: N.T.S.
 2017/ROSAS PIZZARP-DRAWINGS.DWG
 DATE: FEBRUARY 16, 2018

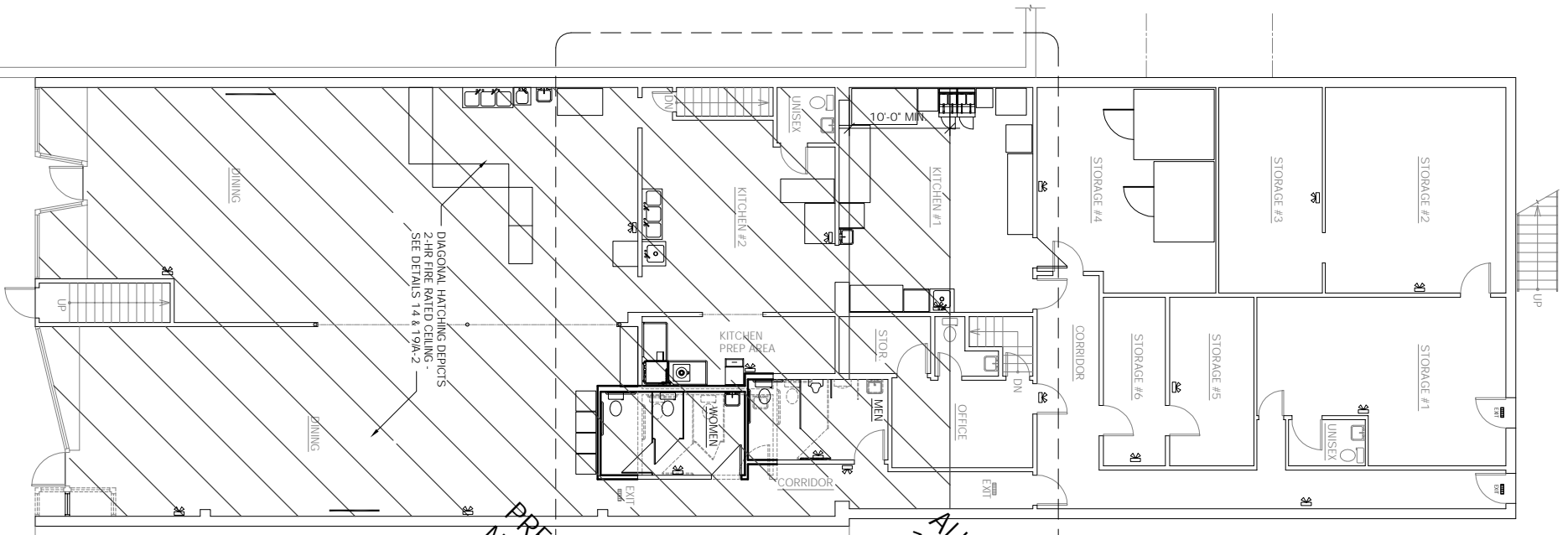
VERIFY ALL CONDITIONS AND DIMENSIONS ON THE JOB AND NOTIFY THE DESIGN ALLIANCE ARCHITECTS, INC. OF ANY DISCREPANCIES PRIOR TO START.



RESTROOM CEILING PLAN
 SCALE: 1/4" = 1'-0"
 2017/ROSAS PIZZARP-DRAWINGS.DWG
 DATE: FEBRUARY 23, 2018



ENLARGED FLOOR PLAN
 SCALE: 1/4" = 1'-0"
 2017/ROSAS PIZZARP-DRAWINGS.DWG
 DATE: FEBRUARY 16, 2018



MAIN FLOOR PLAN
 SCALE: 1/8" = 1'-0"
 2017/ROSAS PIZZARP-DRAWINGS.DWG
 DATE: DECEMBER 19, 2017

PRELIMINARY NOT FOR CONSTRUCTION
 ALL DRAWINGS ARE 1/2 SCALE SHOWN

UPPER FLOOR APARTMENTS TO REMAIN UNALTERED

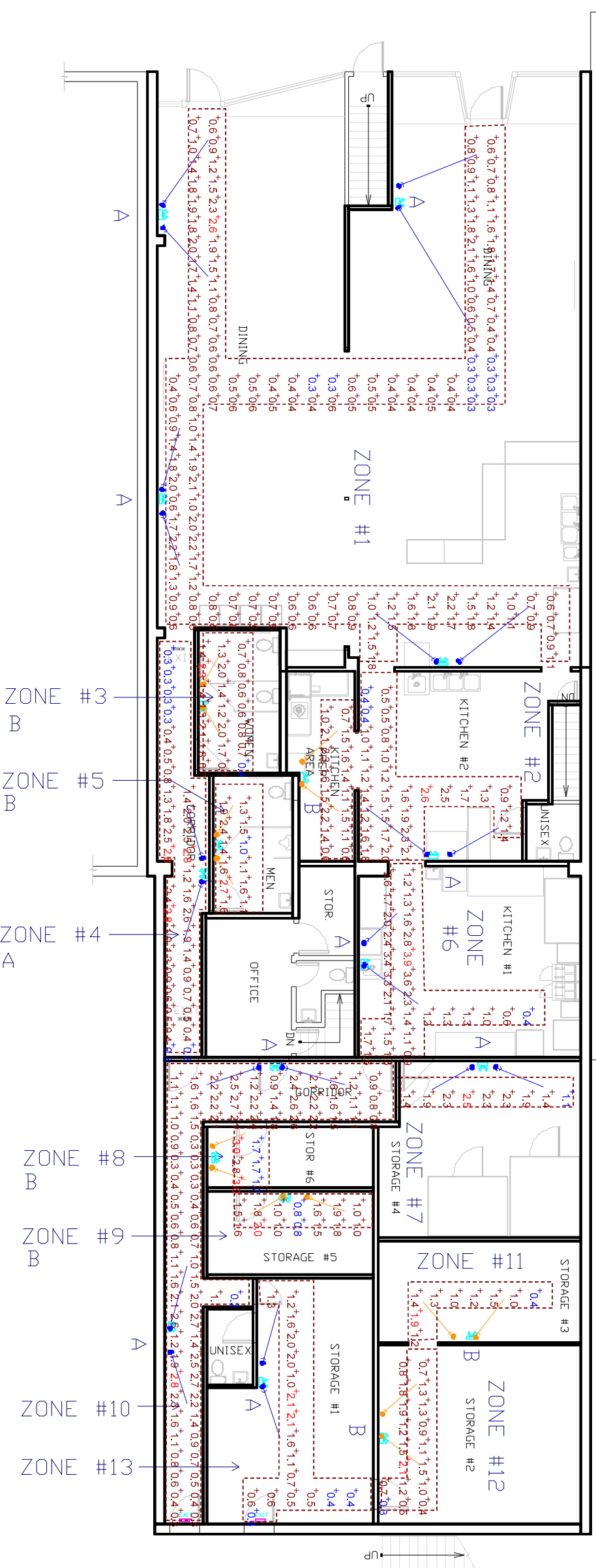
ROSA'S PIZZA
 178 W. Main Street
 Whitewater, WI

the Design Alliance Architects, Inc.
 1003 Madison Avenue
 Fort Atkinson, WI (920) 563-3404

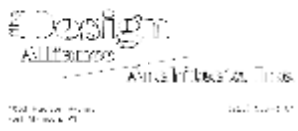
DRAWING NAMES	MAIN FLOOR PLAN
LEGEND	RESTROOM CEILING PLAN
REVISIONS	
PROJECT DATA	DATE: 2/23/2018 DRAWN BY: CL CHECKED BY: P.W.
SHEET NO.	A-1

Schedule	Symbol	Label	Quantity	Manufacturer	Catalog Number	Description	Lamp	Number Lamps	Filename	Lumens Per Lamp	Light Loss Factor	Wattage
	⬇	A	11	Lithonia Lighting	EIA LT LP06VS	QUANTUM LED EMERGENCY TWIN-HEAD UNIT (ONE HEAD ONLY).	ONE 5.4-WATT LED ASSEMBLY	1	EIA_LT_LP06VS.iies	398.0666	0.97	10.8
	⬇	B	7	Lithonia Lighting	ELM2 LED	QUANTUM LED EMERGENCY TWIN-HEAD UNIT (ONE HEAD ONLY)	ONE 1.5-WATT LED ASSEMBLY	1	ELM2_LED.iies	-1	0.97	3

Statistics					
Description	Symbol	Avg	Max	Min	Max/Min Avg/Min
Calc Zone #1	+	1.0 fc	2.6 fc	0.3 fc	8.7:1 3.3:1
Calc Zone #2	+	1.4 fc	2.6 fc	0.4 fc	6.5:1 3.5:1
Calc Zone #3	+	1.2 fc	2.3 fc	0.4 fc	5.8:1 3.0:1
Calc Zone #4	+	1.3 fc	2.8 fc	0.3 fc	9.3:1 4.3:1
Calc Zone #5	+	1.6 fc	2.7 fc	1.0 fc	2.7:1 1.6:1
Calc Zone #6	+	1.8 fc	3.9 fc	0.4 fc	9.8:1 4.5:1
Calc Zone #7	+	1.9 fc	2.5 fc	1.1 fc	2.3:1 1.7:1
Calc Zone #8	+	2.3 fc	3.0 fc	1.7 fc	1.8:1 1.4:1
Calc Zone #9	+	1.4 fc	2.8 fc	0.8 fc	2.5:1 1.8:1
Calc Zone #10	+	1.4 fc	2.0 fc	0.2 fc	14.0:1 7.0:1
Calc Zone #11	+	1.2 fc	1.9 fc	0.4 fc	4.8:1 3.0:1
Calc Zone #12	+	1.1 fc	2.1 fc	0.3 fc	7.0:1 3.7:1
Calc Zone #13	+	1.1 fc	2.1 fc	0.4 fc	5.3:1 2.8:1



EGRESS LIGHTING PLAN
 Scale: N.T.S.
 Date: 2/19/2018



ROSA'S PIZZA
 178 W. Main Street
 Whitewater, WI

Designer
 CL
 Date
 2/23/2018
 Scale
 Not to Scale
 Revision No.
 Summary

EM-1