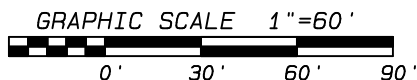
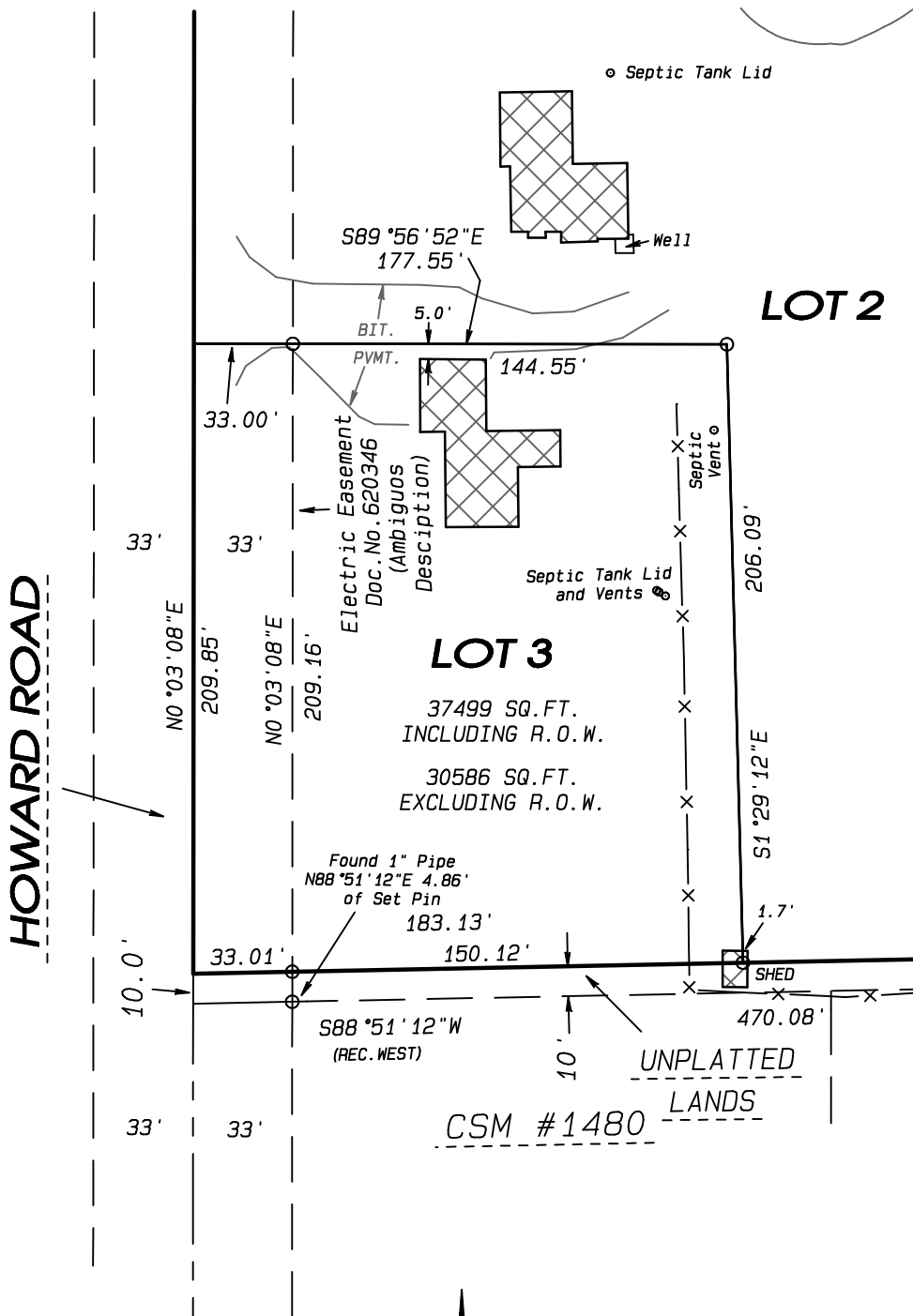


CERTIFIED SURVEY MAP NO. _____

PART OF THE NW 1/4 OF THE NW 1/4 OF FRACTIONAL SECTION 2, T.4N., T.15E. OF THE 4TH P., M, CITY OF WHITEWATER, WALWORTH COUNTY, WISCONSIN.



LEGEND:

- SET IRON PIN, 3/4"x 24", 1.5 LBS./LIN.FT.
- FOUND ALUMINUM MONUMENT
- FOUND BRASS PLUG
- x-x- FENCE

Combs & ASSOCIATES

- LAND SURVEYING
- LAND PLANNING
- CIVIL ENGINEERING

109 W. Milwaukee St.
 Janesville, WI 53548
 www.combsurvey.com

tel: 608 752-0575
 fax: 608 752-0534