

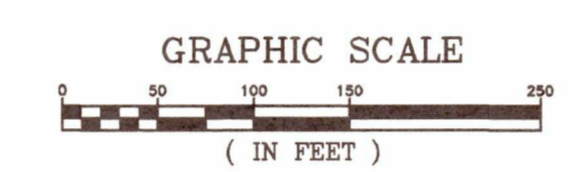
STARIN ROAD RIGHT OF WAY PLAT

Description: Being a part of the NW 1/4 and NE 1/4 of the Fractional NE 1/4 and a part of the NW 1/4 and NE 1/4 of the Fractional NW 1/4, all in Section 4, T4N, R15E, City of Whitewater, Walworth County, Wisconsin, bounded and described as follows:

Commencing at the Limestone Monument with Brass Cap that marks the Southeast corner of the NE 1/4 of said Section 4; Thence N00°21'30"E, along the East line of said NE 1/4, a distance of 2181.09 feet; Thence N89°38'30"W, a distance of 32.98 feet, to a Found 3/4" Rebar that marks the POINT OF BEGINNING of the Right of Way to be described; Thence N44°42'30"W, a distance of 56.30 feet, to a Found Mag Nail; Thence N89°57'23"W, a distance of 290.21 feet, to a Found 3/4" Rebar; Thence N76°56'08"W, a distance of 459.21 feet, to a Found 3/4" Rebar that marks a point of curvature, said curve having its center point in the Southerly direction, a radius of 455.00 feet, a delta angle of 72°51'35", a chord length of 540.39 feet, and a chord bearing of S66°38'25"W; Thence Southwesterly along the arc of said curve, a distance of 578.60 feet, to the East line of the NW 1/4 of said NE 1/4 and to a Set 3/4"x18" Iron Rebar (Set 3/4" Rebar); Thence S00°22'23"W, along said East line, a distance of 20.91 feet, to a Set 3/4" Rebar; Thence S28°25'47"W, a distance of 146.34 feet, to a Set 3/4" Rebar that marks a point of curvature, said curve having its center point in the Northerly direction, a radius of 555.00 feet, a delta angle of 73°36'36", a chord length of 664.99 feet, and a chord bearing of S65°14'05"W; Thence Southwesterly along the arc of said curve, a distance of 713.03 feet, to a Set 3/4" Rebar; Thence N35°10'45"W, a distance of 14.82 feet, to a Set 3/4" Rebar that marks a point of curvature, said curve having its center point in the Northerly direction, a radius of 545.00 feet, a delta angle of 15°15'05", a chord length of 144.84 feet, and a chord bearing of N69°11'42"W; Thence Northwesterly along the arc of said curve, a distance of 145.07 feet, to a Set 3/4" Rebar; Thence N61°29'49"W, a distance of 419.09 feet, to a Set 3/4" Rebar that marks a point of curvature, said curve having its center point in the Southerly direction, a radius of 455.00 feet, a delta angle of 16°17'44", a chord length of 128.97 feet, and a chord bearing of N69°38'41"W; Thence Northwesterly along the arc of said curve, a distance of 129.41 feet, to the West line of said NE 1/4 and to a Set 3/4" Rebar; Thence S00°23'15"W, along said West line, a distance of 11.53 feet, to the South line of Lot 1 of Certified Survey Map No. 3260, and to a Set 3/4" Rebar; Thence S89°01'55"W, along said South line, a distance of 179.89 feet, to the Easterly Right of Way line of Jefferson Street and a Set 3/4" Rebar; Thence N80°34'30"W, a distance of 60.76 feet, to the Westerly Right of Way line of said Jefferson Street; Thence N45°12'57"W, a distance of 17.78 feet, to a Set 3/4" Rebar; Thence S89°21'42"W, a distance of 56.44 feet, to a Set 3/4" Rebar that marks a point of curvature, said curve having its center point in the Southerly direction, a radius of 455.00 feet, a delta angle of 20°42'22", a chord length of 163.54 feet, and a chord bearing of S79°00'30"W; Thence Southwesterly along the arc of said curve, a distance of 164.43 feet, to a Set 3/4" Rebar; Thence S68°39'18"W, a distance of 266.97 feet, to a Set 3/4" Rebar that marks a point of curvature, said curve having its center point in the Northerly direction, a radius of 545.00 feet, a delta angle of 25°35'17", a chord length of 241.38 feet, and a chord bearing of S81°26'58"W; Thence Southwesterly along the arc of said curve, a distance of 243.40 feet, to a Set 3/4" Rebar; Thence N85°45'24"W, a distance of 72.17 feet, to a Set 3/4" Rebar that marks a point of curvature, said curve having its center point in the Southerly direction, a radius of 461.06 feet, a delta angle of 18°08'34", a chord length of 145.39 feet, and a chord bearing of S85°10'19"W; Thence Southwesterly along the arc of said curve, a distance of 145.99 feet, to a Set 3/4" Rebar and to a Meander line, being N76°06'03"E 63.7 feet, more or less, from the Easterly bank of Whitewater Creek; Thence N60°41'19"W, along said Meander Line, a distance of 116.84 feet, to a Set 3/4" Rebar, being N76°06'03"E 30.0 feet, more or less, from said Easterly bank; Thence N76°06'03"E, a distance of 85.16 feet, to a Set 3/4" Rebar that marks a point of curvature, said curve having its center point in the Southerly direction, a radius of 541.06 feet, a delta angle of 18°08'34", a chord length of 170.61 feet, and a chord bearing of N85°10'19"E; Thence Northeasterly along the arc of said curve, a distance of 171.33 feet, to a Set 3/4" Rebar; Thence S85°45'24"E, a distance of 72.17 feet, to a Set 3/4" Rebar that marks a point of curvature, said curve having its center point in the Northerly direction, a radius of 465.00 feet, a delta angle of 25°35'17", a chord length of 205.95 feet, and a chord bearing of N81°26'58"E; Thence Northeasterly along the arc of said curve, a distance of 207.67 feet, to a Set 3/4" Rebar; Thence N68°39'18"E, a distance of 266.97 feet, to a Set 3/4" Rebar that marks a point of curvature, said curve having its center point in the Southerly direction, a radius of 535.00 feet, a delta angle of 20°42'23", a chord length of 192.29 feet, and a chord bearing of N79°00'30"E; Thence Northeasterly along the arc of said curve, a distance of 193.35 feet, to a Set 3/4" Rebar; Thence N89°21'42"E, a distance of 47.62 feet, to a Set 3/4" Rebar; Thence N44°47'03"E, a distance of 32.63 feet, to the Westerly Right of Way line of Jefferson Street, and to a Set Mag Nail; Thence N56°33'34"E, a distance of 72.17 feet, to a Found 1 1/2" Iron Pipe that marks the Easterly Right of Way line of said Jefferson Street, and the Southerly line of Lot 2 of Certified Survey Map No. 762; Thence N89°28'14"E, along said Southerly line, a distance of 180.04 feet, to the West line of said NE 1/4; Thence S00°23'15"W, along said West line, a distance of 70.94 feet, to a Set 3/4" Rebar that marks a point of curvature, said curve having its center point in the Southerly direction, a radius of 2815.00 feet, a delta angle of 00°07'18", a chord length of 168.15 feet, and a chord bearing of S70°32'18"E; Thence Southeastly along the arc of said curve, a distance of 168.85 feet, to a Set 3/4" Rebar; Thence S61°29'49"E, a distance of 439.86 feet, to a Set 3/4" Rebar; Thence N35°10'45"W, a distance of 16.69 feet, to a Set 3/4" Rebar that marks a point of curvature, said curve having its center point in the Northerly direction, a radius of 455.00 feet, a delta angle of 89°55'54", a chord length of 643.08 feet, and a chord bearing of N73°23'44"E; Thence Northeasterly along the arc of said curve, a distance of 714.17 feet, to a Set 3/4" Rebar; Thence N28°25'47"E, a distance of 150.59 feet, to a Set 3/4" Rebar that marks a point of curvature, said curve having its center point in the Southerly direction, a radius of 545.00 feet, a delta angle of 15°32'18", a chord length of 147.35 feet, and a chord bearing of N36°11'56"E; Thence Northeasterly along the arc of said curve, a distance of 147.80 feet, to the East line of the NW 1/4 of said NE 1/4 and to a Set 3/4" Rebar; Thence S00°22'23"W, along said East line, a distance of 14.55 feet, to a Found 3/4" Rebar that marks a point of curvature, said curve having its center point in the Southerly direction, a radius of 535.00 feet, a delta angle of 60°14'08", a chord length of 536.90 feet, and a chord bearing of N72°57'09"E; Thence Northeasterly along the arc of said curve, a distance of 562.45 feet, to a Set 3/4" Rebar; Thence S76°55'46"E, a distance of 355.13 feet, to a Set 3/4" Rebar that marks a point of curvature, said curve having its center point in the Northerly direction, a radius of 715.00 feet, a delta angle of 13°01'33", a chord length of 162.20 feet, and a chord bearing of S83°26'33"E; Thence Southeastly along the arc of said curve, a distance of 162.55 feet, to a Set 3/4" Rebar; Thence S89°58'05"E, a distance of 200.22 feet, to a Found 3/4" Rebar; Thence N45°18'09"E, a distance of 74.37 feet, to a Found 3/4" Rebar; Thence S00°21'29"W, a distance of 175.33 feet, to the POINT OF BEGINNING, included all lands lying in-between said Meander line and the Center Line of Whitewater Creek containing 382,531 Square Feet or 8.782 Acres of land, more or less

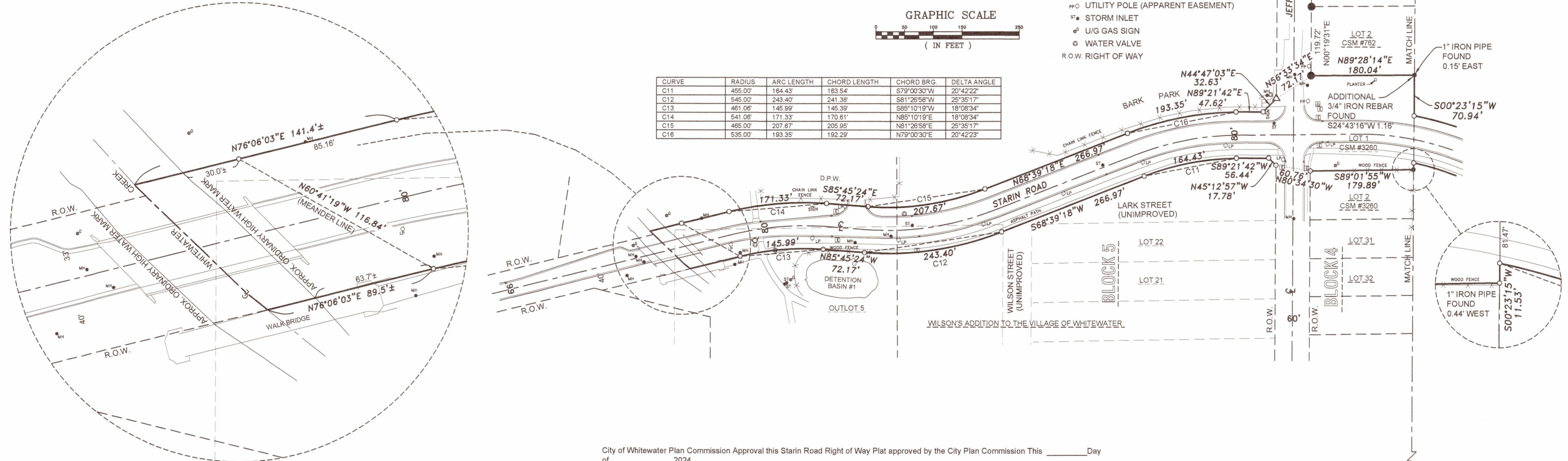


BEARING BASIS:
ALL BEARINGS REFER TO THE SOUTH LINE, NE 1/4 WHICH HAS AN ASSUMED BEARING OF S89°00'57"W



CURVE	RADIUS	ARC LENGTH	CHORD LENGTH	CHORD BRG.	DELTA ANGLE
C11	455.00'	164.43'	163.54'	S79°00'30"W	20°42'22"
C12	545.00'	243.40'	241.38'	S81°26'58"W	25°35'17"
C13	461.06'	145.99'	145.39'	S85°10'19"W	18°08'34"
C14	541.06'	171.33'	170.61'	N85°10'19"E	18°08'34"
C15	465.00'	207.67'	205.95'	N81°26'58"E	25°35'17"
C16	535.00'	193.35'	192.29'	N79°00'30"E	20°42'23"

- LEGEND**
- 1 1/2" I.D. IRON PIPE FOUND
 - 3/4" IRON REBAR FOUND
 - 1" I.D. IRON PIPE FOUND
 - 3/4"x18" IRON REBAR (1.502 lbs/lin ft) SET
 - ⬢ SECTION CORNER FOUND AS NOTED
 - ▲ MAG NAIL SET
 - ▲ MAG NAIL FOUND
 - ▣ ELECTRIC VAULT
 - ▣ FIBER VAULT
 - ▣ LIGHT CONTROL PANEL
 - ⊕ LIGHT POLE
 - ⊗ FENCE AS NOTED
 - MH MANHOLE
 - PPU UTILITY POLE (APPARENT EASEMENT)
 - ST STORM INLET
 - ⊕ U/G GAS SIGN
 - ⊕ WATER VALVE
 - R.O.W. RIGHT OF WAY



SOUTHWEST SURVEYING & ASSOCIATES, Inc.
P.O. BOX K, PALMYRA, WI. 53156
262-495-4910
920-674-4884

I, John C. Kannard, Professional Land Surveyor, hereby certify that in full compliance with the provisions of Section 84.095 of the Wisconsin Statutes and under the direction of the City of Whitewater, I have surveyed and mapped the Starin Road Right of Way Plat and that such plat correctly represents all exterior boundaries of the surveyed land to the best of my knowledge and belief.

John C. Kannard, Professional Land Surveyor, S-2248

City of Whitewater Plan Commission Approval this Starin Road Right of Way Plat approved by the City Plan Commission This _____ Day of _____, 2024.

Niel Hicks, City Council Rep _____ Heather Boehm, Clerk _____

City of Whitewater Clerk Approval this Starin Road Right of Way Plat approved by the City Clerk This _____ Day of _____, 2024.

Heather Boehm, Clerk _____

City of Whitewater City Council Approval this Starin Road Right of Way Plat approved by the City Council This _____ Day of _____, 2024.

John Weidl, City Manager _____ Heather Boehm, Clerk _____

SW CORNER, NE 1/4
CONCRETE MONUMENT
W/BRASS CAP
OF RECORD

SHEET 2 OF 2
DATE: JANUARY 11, 2024
JOB NO: W-220157