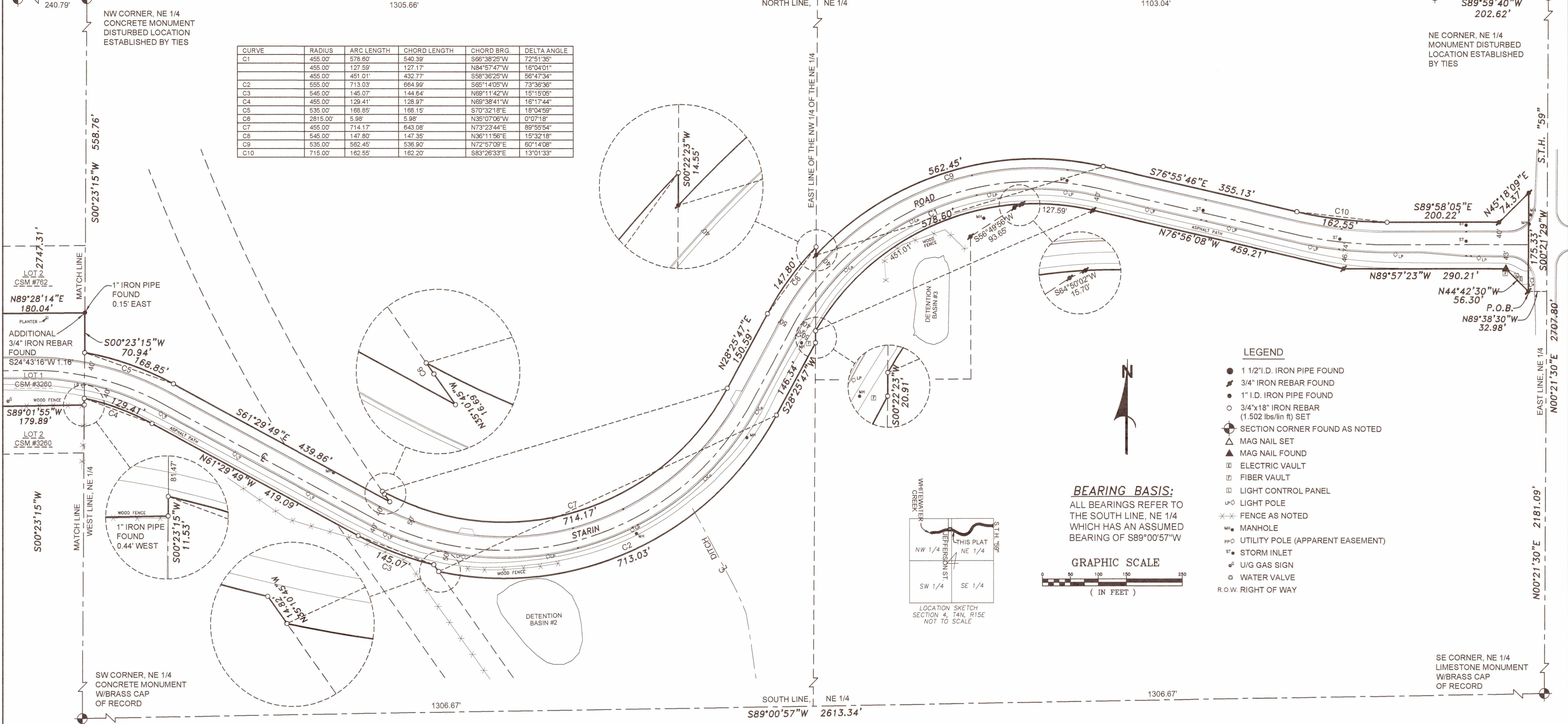


# STARIN ROAD RIGHT OF WAY PLAT

SW CORNER, SE 1/4  
ALUMINUM MONUMENT  
DISTURBED LOCATION  
ESTABLISHED BY TIES

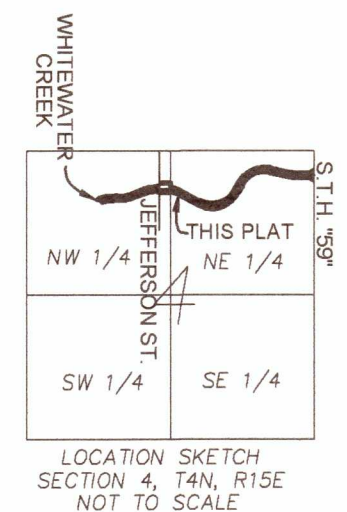
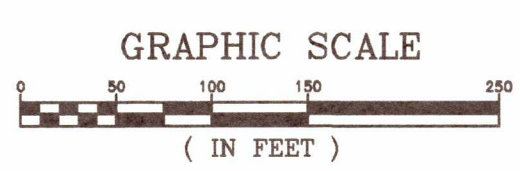
SE CORNER, SE 1/4  
ALUMINUM MONUMENT  
OF RECORD

CURVE	RADIUS	ARC LENGTH	CHORD LENGTH	CHORD BRG.	DELTA ANGLE
C1	455.00'	578.60'	540.39'	S66°38'25"W	72°51'35"
	455.00'	127.59'	127.17'	N84°57'47"W	16°04'01"
	455.00'	451.01'	432.77'	S58°36'25"W	56°47'34"
C2	555.00'	713.03'	664.99'	S65°14'05"W	73°36'36"
C3	545.00'	145.07'	144.84'	N69°11'42"W	15°19'05"
C4	455.00'	129.41'	128.97'	N69°38'41"W	18°17'44"
C5	535.00'	168.85'	168.15'	S70°32'18"E	18°04'59"
C6	2815.00'	5.98'	5.98'	N36°07'06"W	0°07'18"
C7	455.00'	714.17'	643.08'	N73°23'44"E	89°55'54"
C8	545.00'	147.80'	147.35'	N36°11'56"E	15°32'18"
C9	535.00'	562.45'	536.90'	N72°57'09"E	60°14'08"
C10	715.00'	162.55'	162.20'	S83°26'33"E	13°01'33"



- LEGEND**
- 1 1/2" I.D. IRON PIPE FOUND
  - 3/4" IRON REBAR FOUND
  - 1" I.D. IRON PIPE FOUND
  - 3/4"x18" IRON REBAR (1.502 lbs/lin ft) SET
  - ⊙ SECTION CORNER FOUND AS NOTED
  - △ MAG NAIL SET
  - ▲ MAG NAIL FOUND
  - ⊞ ELECTRIC VAULT
  - ⊞ FIBER VAULT
  - ⊞ LIGHT CONTROL PANEL
  - ⊞ LIGHT POLE
  - ✕ FENCE AS NOTED
  - ⊞ MANHOLE
  - ⊞ UTILITY POLE (APPARENT EASEMENT)
  - ⊞ STORM INLET
  - ⊞ U/G GAS SIGN
  - ⊞ WATER VALVE
  - R.O.W. RIGHT OF WAY

**BEARING BASIS:**  
ALL BEARINGS REFER TO THE SOUTH LINE, NE 1/4 WHICH HAS AN ASSUMED BEARING OF S89°00'57"W



Notes:  
1) Coordinates are referenced to the Wisconsin County Coordinate System, Walworth County, NAD 83/91 Adjustment.



**SOUTHWEST SURVEYING & ASSOCIATES, Inc.**  
P.O. BOX K, PALMYRA, WI, 53156  
262-495-4910  
920-674-4884