


# HAWK TAILS ARCADE TENANT SPACE REMODEL

DLK ENTERPRISES



ANGUS-YOUNG  
ARCHITECTS/ENGINEERS  
Janesville | Madison

141B W WHITEWATER ST  
WHITEWATER, WI 53190

HAWK TAILS ARCADE  
TENANT SPACE REMODEL

AY PROJECT NUMBER: 76610

## SHEET INDEX:

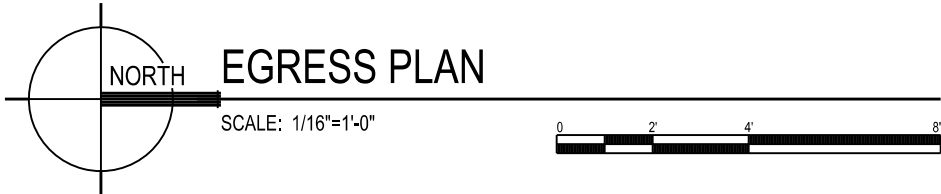
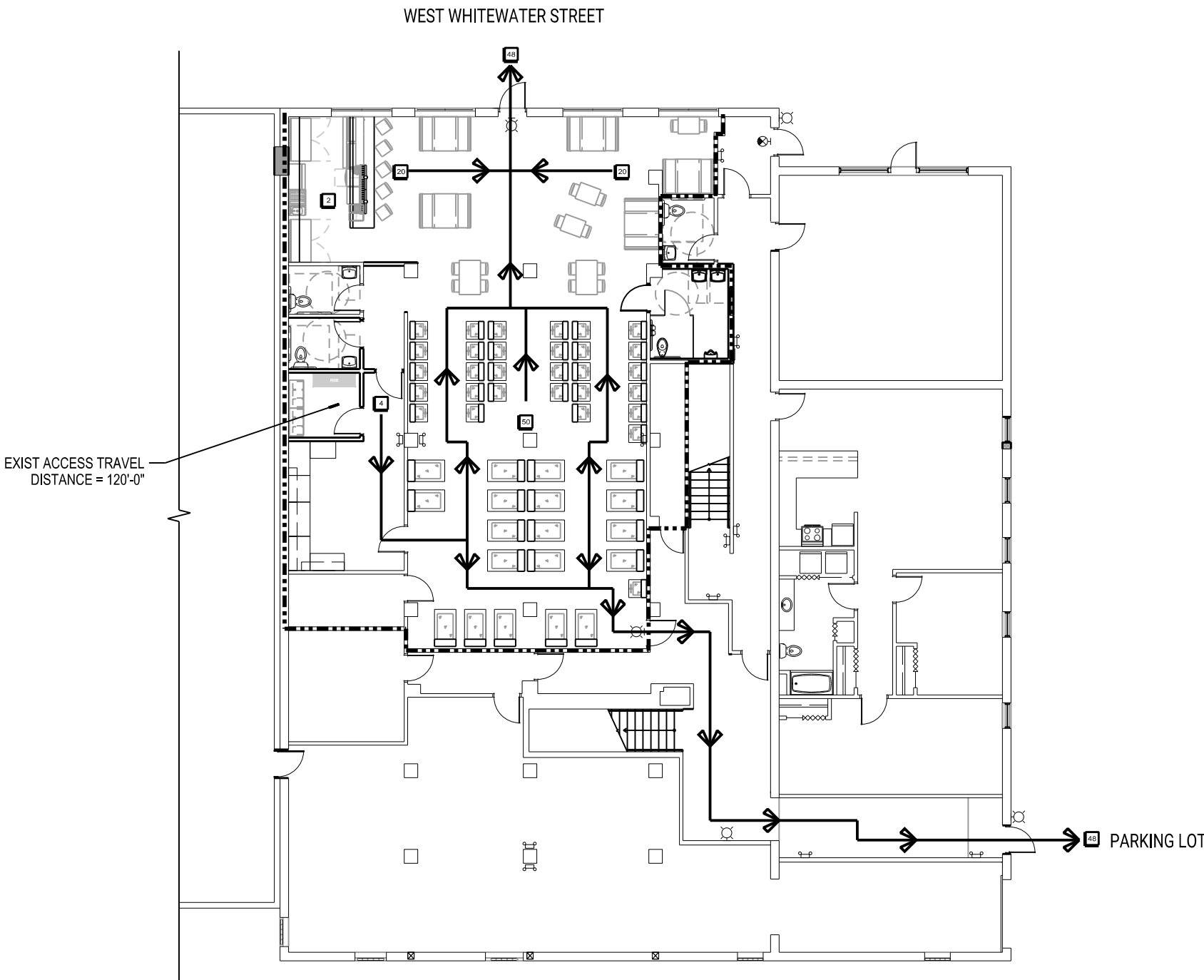
- G001 COVER SHEET
- A001 FIRST FLOOR DEMOLITION PLAN
- A101 FIRST FLOOR PLAN

Conditionally  
**APPROVED**  
DEPT. OF SAFETY AND PROFESSIONAL  
SERVICES  
DIVISION OF INDUSTRY SERVICES

*Jennifer Zettler*

SEE CORRESPONDENCE

Building  
Alteration - level 2  
DIS-082336932  
CB-092301488-PRB  
September 15, 2023



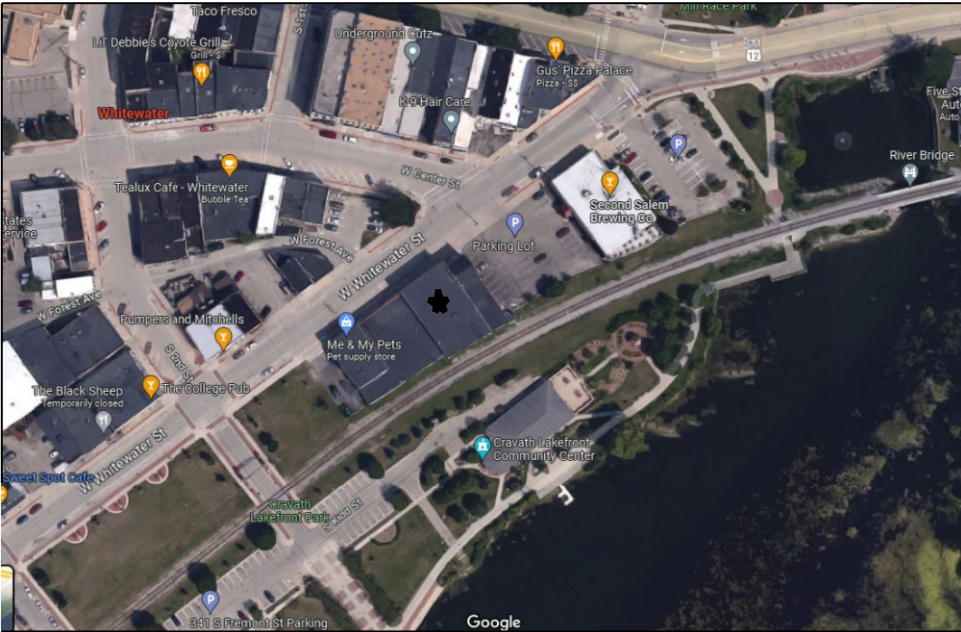
## REGULATORY DATA:

PROJECT ADDRESS  
141B WEST WHITEWATER STREET  
WHITEWATER, WISCONSIN 53190

BUILDING CODE  
WISCONSIN ENROLLED 2015 EIBC  
5B CONSTRUCTION - NON-SPRINKLED  
USE AND OCCUPANCY CLASSIFICATION  
R-2, A-2  
SEPERATED USE  
MAXIMUM OCCUPANT LOAD = 99  
TOILET REQUIREMENTS (A2) - 1 PER 40 MALES/FEMALES

GENERAL BUILDING HEIGHT AND AREA  
MAX. AREA R-2= 7000 S.F. (8750 S.F. W/ ACCESS INCREASE)  
MAX. AREA ASSEMBLY = 6,000 S.F. (7,500 S.F. W/ ACCESS INCREASE)  
MAXIMUM STORIES R-2 = 2  
MAXIMUM STORIES ASSEMBLY= 1  
MAXIMUM HEIGHT = 40 FEET

## LOCATION MAP:



### ISSUANCES / REVISIONS

| NO: | DESCRIPTION:     | DATE:      |
|-----|------------------|------------|
| CD  | DSPS PLAN REVIEW | 08/16/2023 |
|     |                  |            |
|     |                  |            |
|     |                  |            |
|     |                  |            |
|     |                  |            |
|     |                  |            |

Due to electronic distribution, this drawing may not be printed to the scale indicated on the drawings. Do NOT use scale to determine dimensions or sizes.

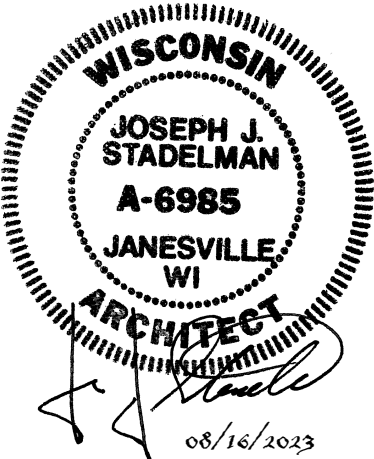
No part of this drawing may be used or reproduced in any form or by any means, or stored in a database or retrieval system, without prior written permission of.

ANGUS - YOUNG ASSOCIATES, INC. Copyright © 2023 All Rights Reserved

## PROJECT TEAM

OWNER:  
DLK ENTERPRISES  
144 NORTH TRATT STREET  
WHITEWATER, WI 53190  
CONTACT: MIKE KACHEL  
EMAIL: leonk@ldnet.com  
PHONE: (920) 397-0421

ARCHITECT:  
ANGUS-YOUNG ASSOCIATES, INC.  
555 S. River St.  
Janesville, WI 53548  
CONTACT: BRAD WERGINZ  
EMAIL: b.werginz@angusyoung.com  
PHONE: (608)756-2326



|    |    |    |    |    |    |
|----|----|----|----|----|----|
| 24 | 20 | 16 | 12 | 08 | 04 |
| 23 | 19 | 15 | 11 | 07 | 03 |
| 22 | 18 | 14 | 10 | 06 | 02 |
| 21 | 17 | 13 | 09 | 05 | 01 |

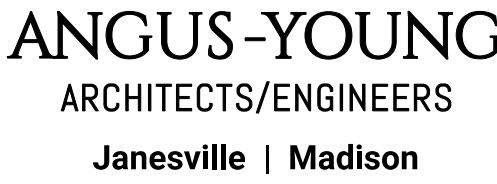
TITLE BLOCK

DETAILS IN THIS SET ARE PLACED ON THE SHEETS AND NUMBERED WITH RESPECT TO THE GRID ABOVE. CONSEQUENTLY, DETAILS ON A GIVEN SHEET MAY OR MAY NOT BE NUMBERED CONSECUTIVELY.

608.756.2326  
www.angusyoung.com

COVER SHEET

G001



WISCONSIN  
DAIRY SUPPLY

# HAWK TAILS ARCADE TENANT SPACE REMODEL

L41B W WHITEWATER  
STREET  
WHITEWATER, WI  
53190

[illegible]

Due to electronic distribution, this drawing may not be printed to the scale indicated on the drawings. Do NOT use scale to determine dimensions or sizes.

No part of this drawing may be used or reproduced in any form or by any means, or stored in a database or retrieval system, without prior written permission of.

ANGUS - YOUNG ASSOCIATES, INC.  
Copyright © 2023 All Rights Reserved

PROJECT NUMBER  
76610

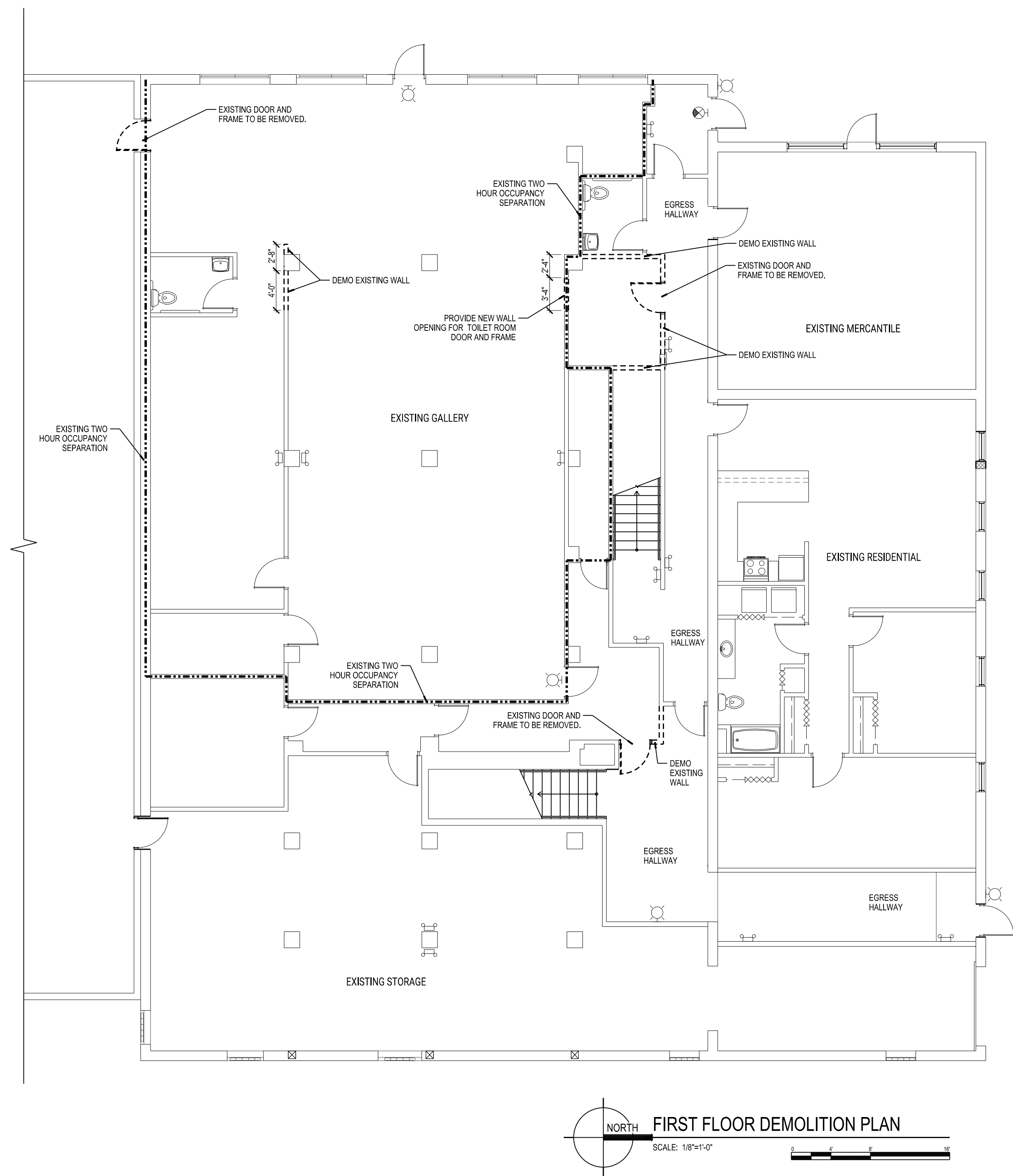
APPROVED BY  
BTW

REVIEWED BY  
BTW

DRAWN BY  
BTW

### FIRST FLOOR DEMOLITION PLAN

# A001



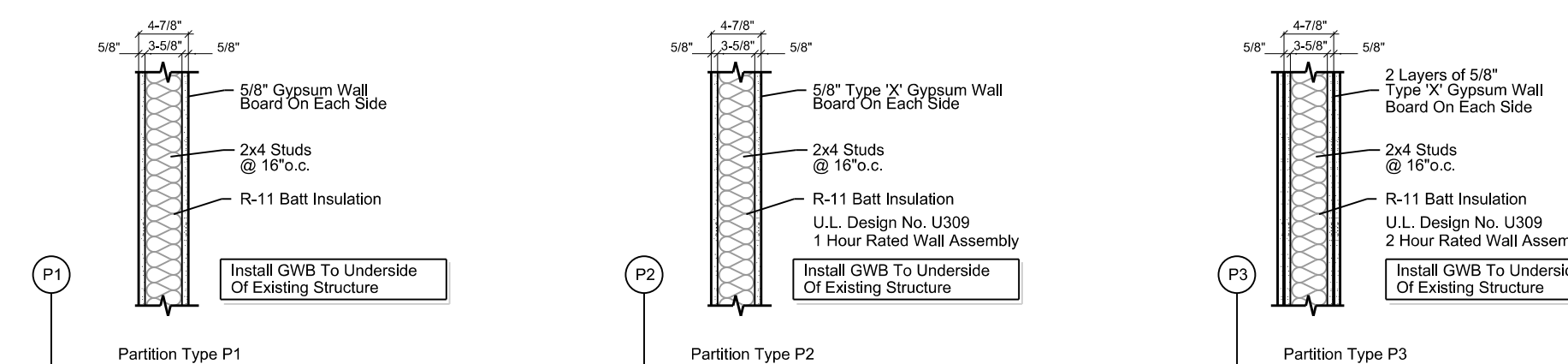
SCALE:  $1/8"=1'-0"$

X:\76610\cad\76610shA001.dgn

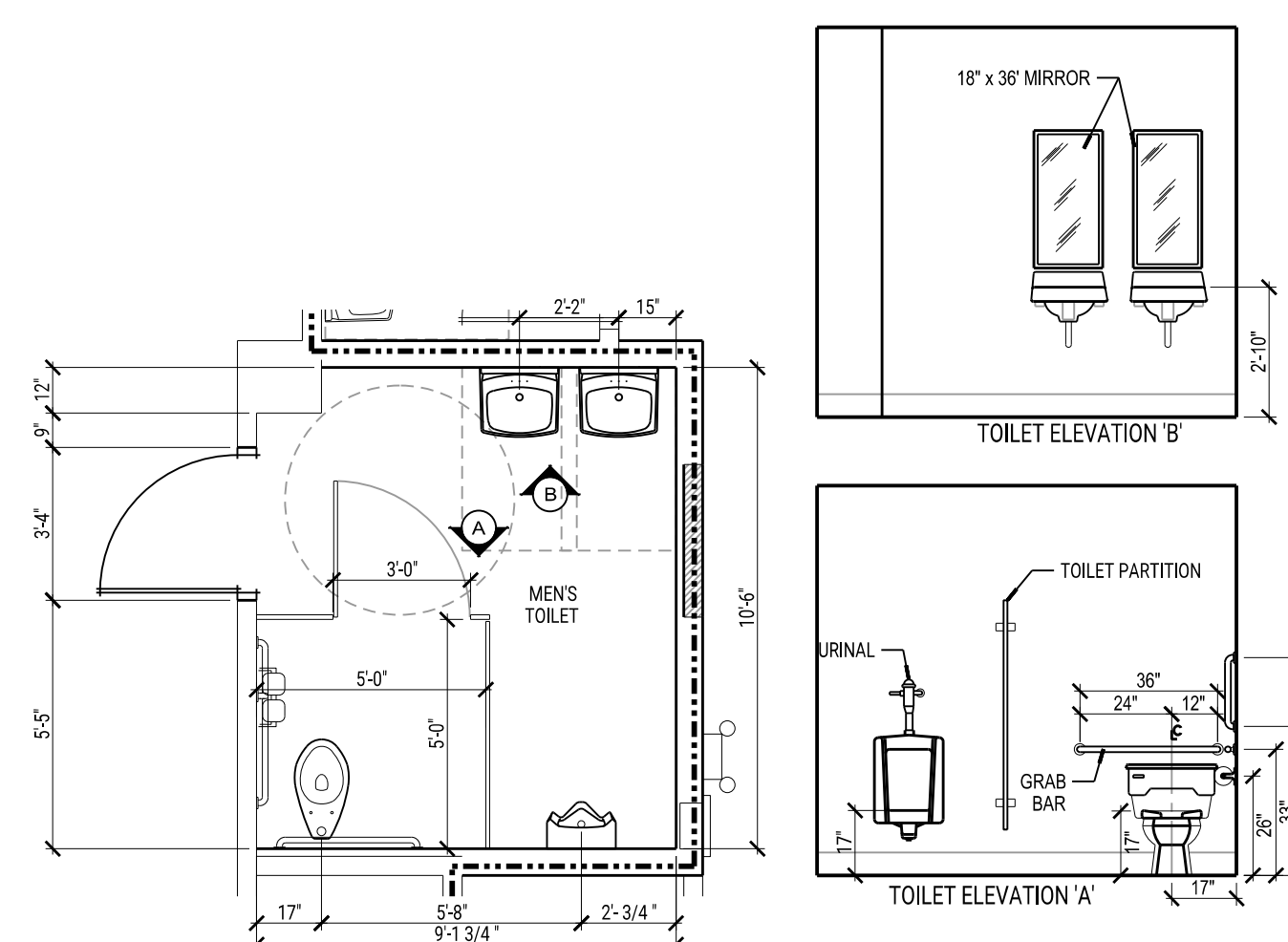
PLOTTED BY: BradW

ORIGINAL SIZE: 24" x 36"

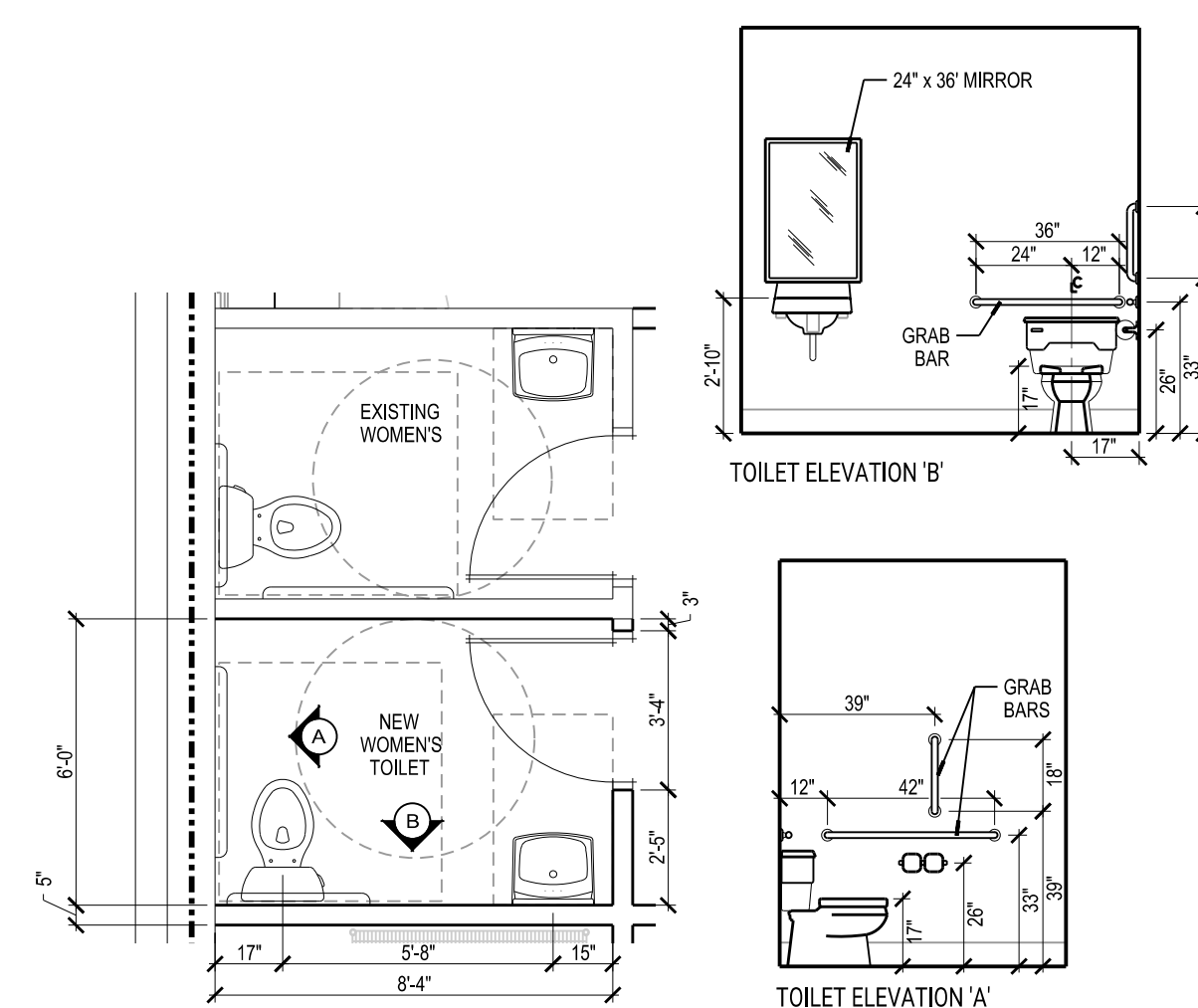




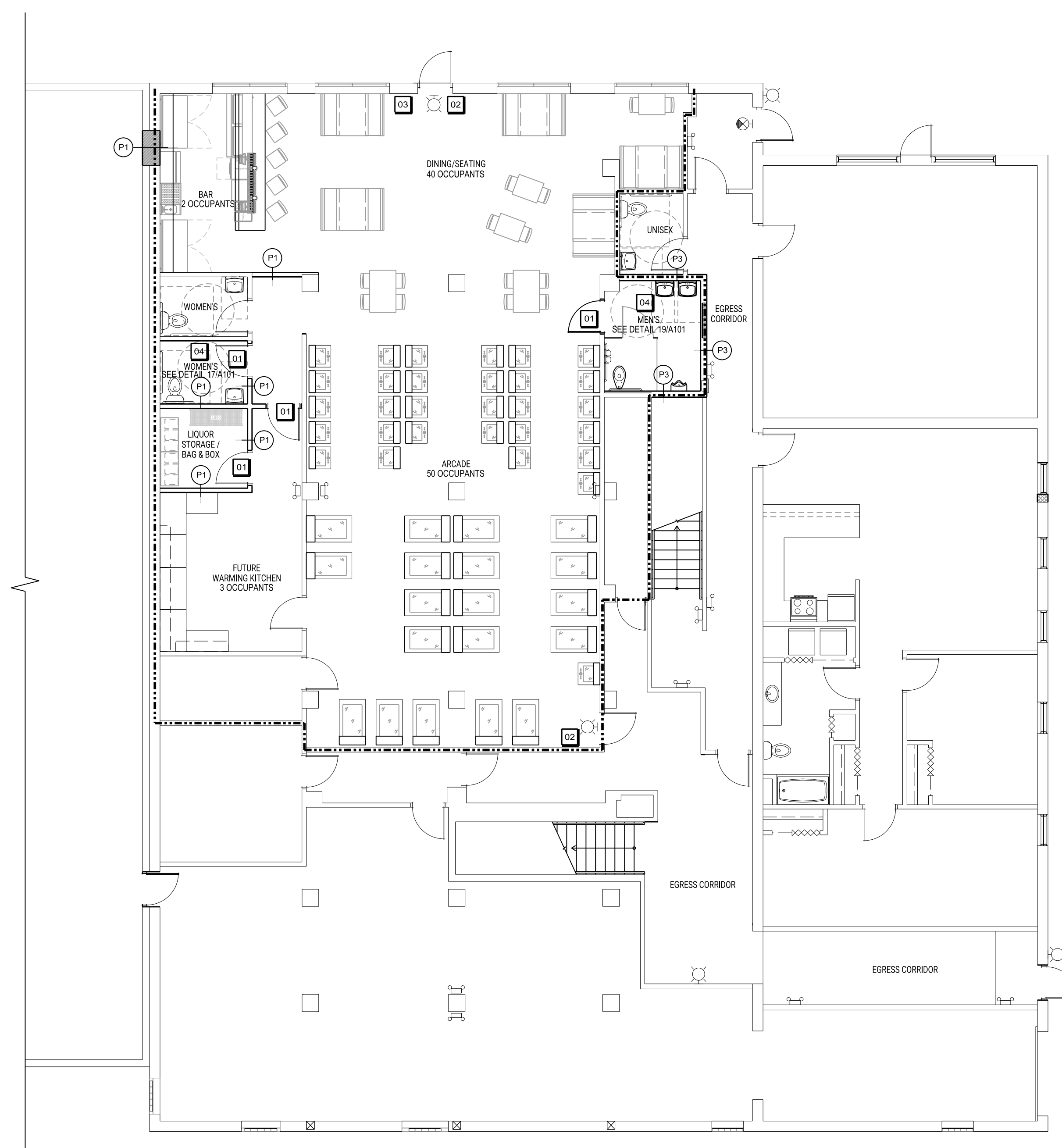
1. Wood Studs – Nominal 2x4 studs spaced 16" O.C.
2. Batts and Blankets – Min 3 in. thick insulation batts, friction-fitted between studs.
3. Gypsum Board – 5/8 in. thick, with square or tapered edges, applied vertically or horizontally with vertical joints centered over studs. Horizontal joints need not be backed by framing. Fastened with Type S-12 screws, 1-lb. System - For vertical application, fastened to studs and runners with 1 long screws spaced max 48" OC at vertical edges and spaced max 12 in. OC in the field. For horizontal application, fastened to studs and runners with 1 in long screws spaced max 48" OC. Vertical joints staggered on sub cavity from cement board vertical joints on opposite side of studs. Horizontal edges joints and horizontal butt joints on opposite sides of studs need not be staggered.



19 ENLARGED MEN'S TOILET ROOM PLAN  
A101 SCALE: 1/4"=1'-0"



17 ENLARGED WOMEN'S TOILET ROOM PLAN  
A101 SCALE: 1/4"=1'-0"



## KEYNOTES

- |    |  |
|----|--|
| 01 | 36" x 84" WOOD DOOR WITH HOLLOW METAL FRAME  |
| 02 | "MAXIMUM OCCUPANCY LOAD - 99" TO BE POSTED IN VISIBLE LOCATION                     |
| 03 | RELOCATED FIRE EXTINGUISHER AND CABINET  |
| 04 | TOILET ROOM FLOORING AND BASE TO BE MOISTURE IMPERVIOUS MATERIAL, FOR CLEANABILITY |

