

Netwurx Internet Proposed Plan

for use of water tank at
797 Indian Mound Parkway
Whitewater WI

as a communications facility

INDIAN MOUND
PARKWAY

USH 12

POST

WELL NO. 9

FILTER BLDG.

HOLDING
TANK

VENT

SAN

SAN

GMH

ST

ST

ST

bell of tower

proposed
cable path

proposed
enclosure

R20'

R6'-2"

proposed
paved drive

proposed
electrical
service

7'-11"

12'

21'-2"

8'-10"

40'

4'-7"

50'-2"

41'-2"

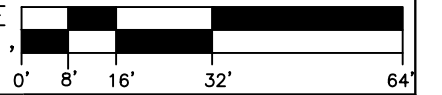
25'-4"

12'

Site Plan

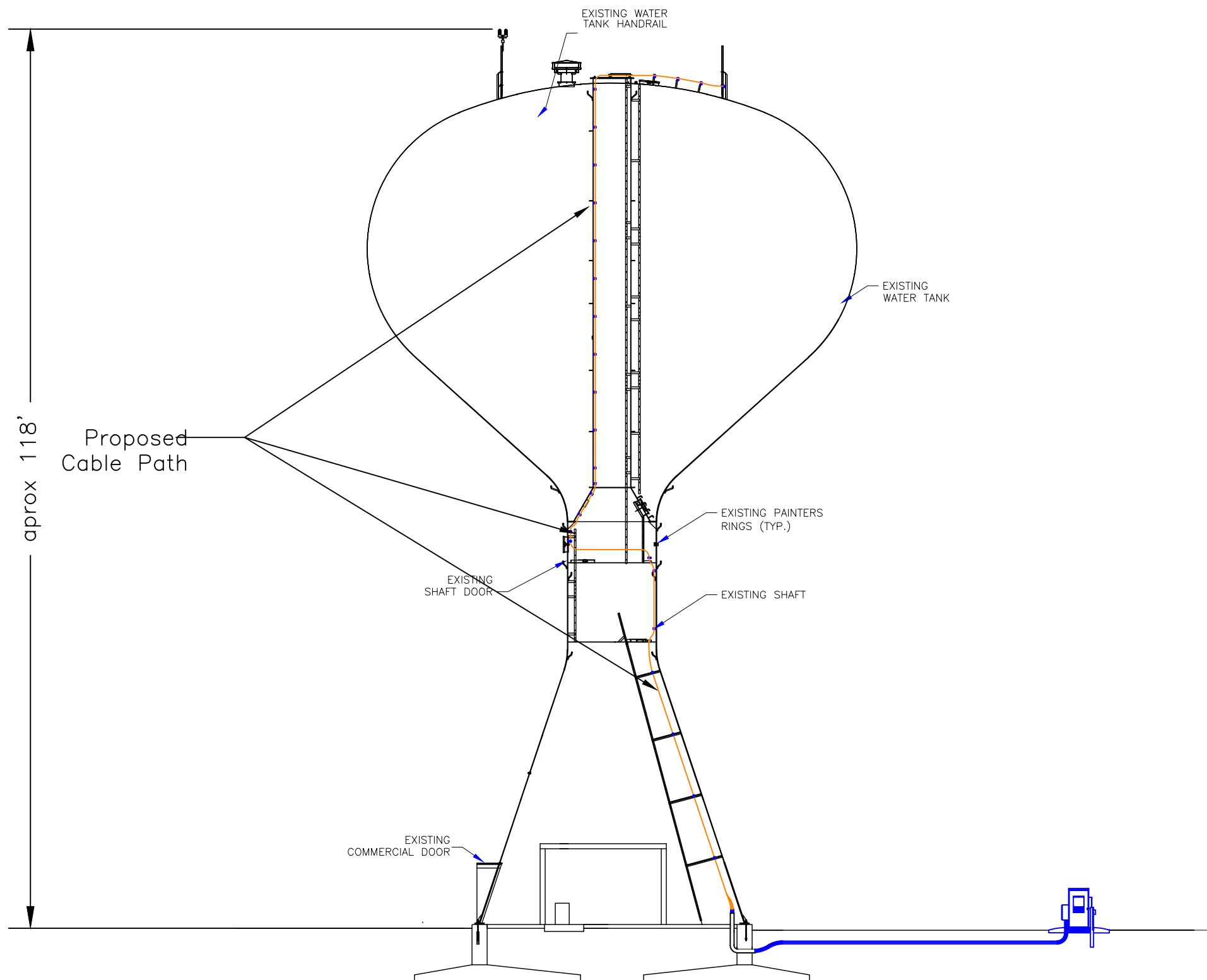
SCALE

$\frac{1}{32}'' = 1'$



NETWURX
INTERNET

BY	DaveR
DATE	1/11/2024
BY	
DATE	
BY	
DATE	



- Cable will be attached to existing cable mount positions via cable hanger and universal cushions.
- Cable will be attached to other locations via beam clamp, cable hanger, and universal cushions where mounting locations have not been provided.
- Cable will enter duct installed through the provided conduit through floor and foundation wall.
- Duct will be run underground to proposed equipment enclosure
- Equipment enclosure will not require fencing.
- Electrical Service to be installed at equipment enclosure.

BY	DATE	BY	DATE	BY	DATE	BY	DATE
DaveR	1/11/2024						

Tower Elevation

SCALE $\frac{1}{16}" = 1'$

NETWURX
INTERNET

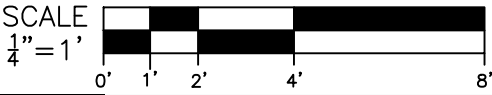


- The mount locations will contact the vertical members of the handrail assembly.
- Cable path will attached to the horizontal hand rail and existing cable ladder via beam clamp and universal cushions.

existing pipe with omni antenna

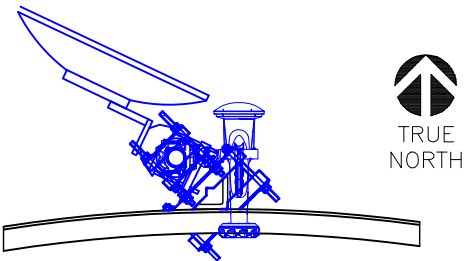
existing pipe with obstruction light

Antennal Locations

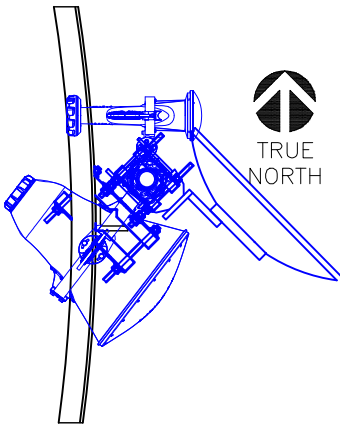


BY	DaveR
DATE	1/11/2024
BY	
DATE	
BY	
DATE	

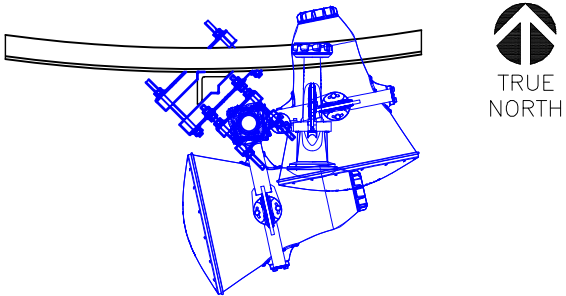
NORTH
Mount
Location



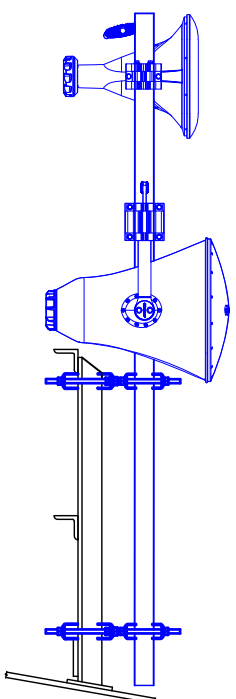
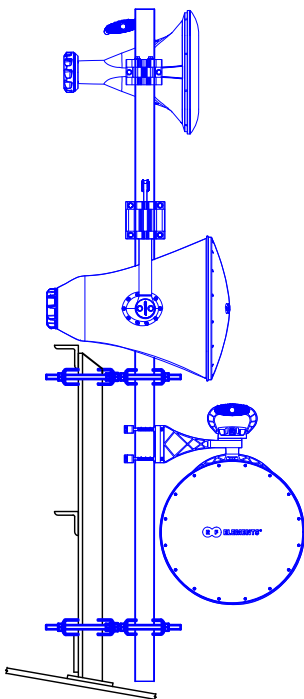
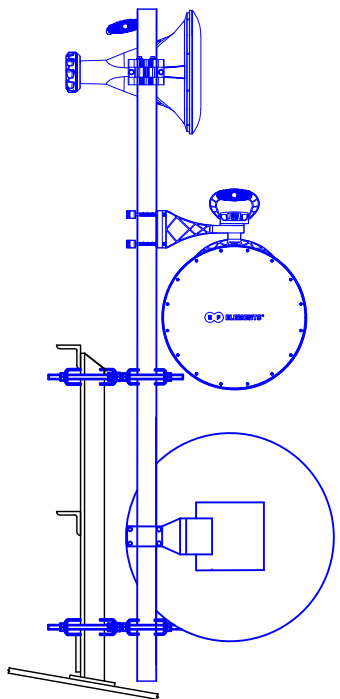
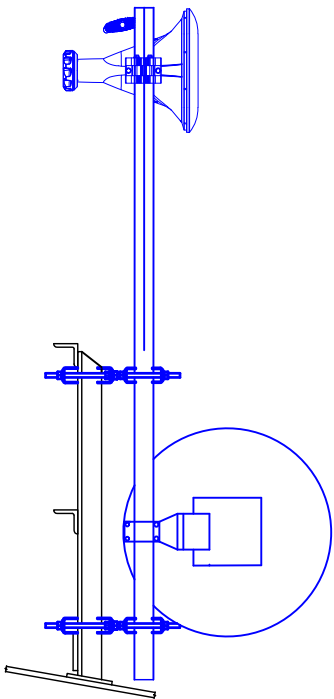
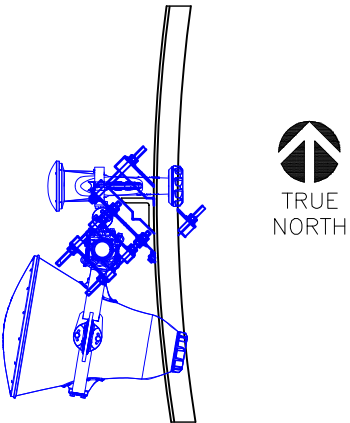
EAST
Mount
Location



SOUTH
Mount
Location

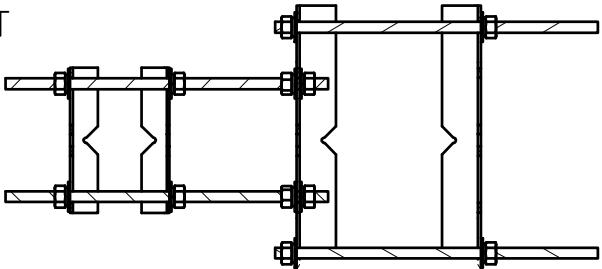


WEST
Mount
Location

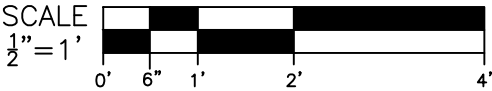


- The mount locations will contact the vertical members of the handrail assembly.
- Cable path will attached to the horizontal hand rail and existing cable ladder via beam clamp CLAMP SET and universal cushions.
- small junction for low voltage power distribution may be needed at time of install.

UNIVERSAL PIPE-TO-PIPE



Antenna Mount
Detail



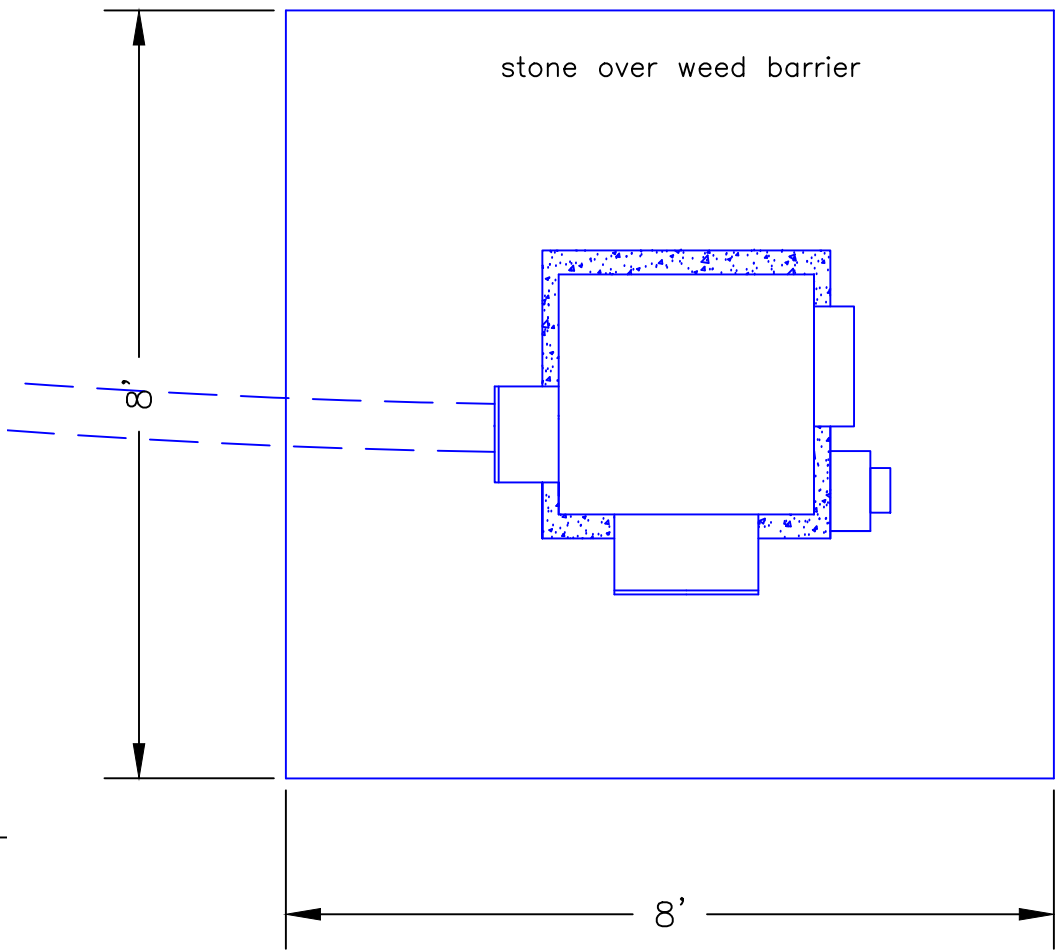
BY	DaveR
DATE	1/11/2024
BY	
DATE	
BY	
DATE	



TRUE
NORTH

Proposed paved
access drive

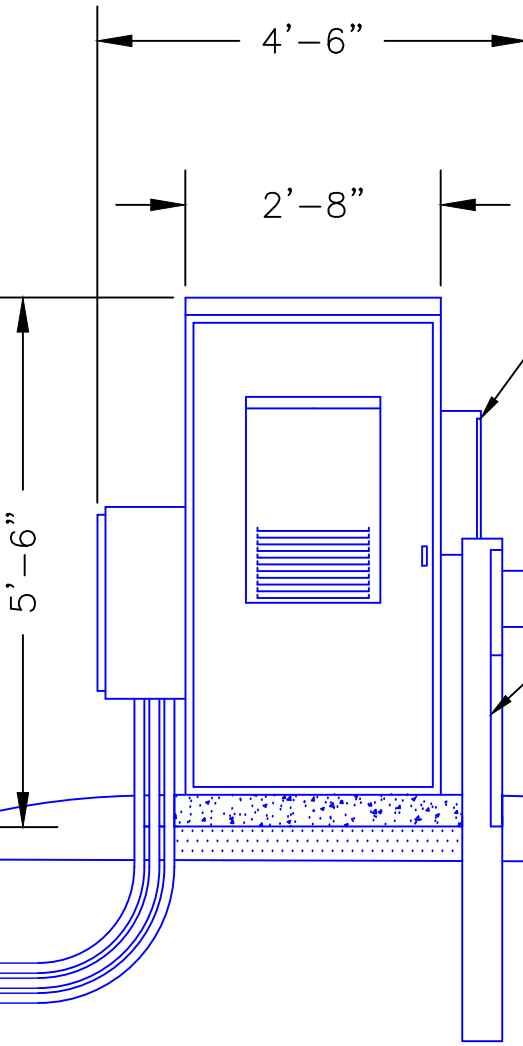
stone over weed barrier



Electrical 200A
Load Center

Electrical Meter

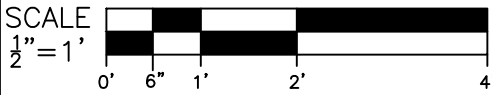
Stone over
weed barrier



existing grade

3 underground 1-1/4" duct

Equipment
Enclosure Detail



BY	DaveR
DATE	1/11/2024
BY	
DATE	
BY	
DATE	