

Rik Kowall, Supervisor
Anthony L. Noble, Clerk
Mike Roman, Treasurer



Trustees
Scott Ruggles
Steve Anderson
Andrea C. Voorheis
Liz Fessler Smith

WHITE LAKE TOWNSHIP DEPARTMENT OF PUBLIC SERVICES

7525 Highland Road, White Lake, Michigan 48383-2900, (248) 698-7700, www.whitelaketwp.com

October 31, 2025

Honorable Board of Trustees
Charter Township of White Lake
7525 Highland Road
White Lake, MI 48386

RE: DPS Vehicle Purchase

Honorable Board of Trustees,

At the Regular Township Board of Trustees meeting of September 16, 2025 DPS was approved to auction the 2015 Ford Transit Connect mini van that was being rotated out of service. The vehicle is now up for auction.

At the Regular Township Board of Trustees meeting of March 21, 2023, you approved a truck purchase to fill a shortage of vehicles as our department was growing. During that meeting there was a lot of discussion regarding adding a crane to the truck for hydrant and valve work that are regular and frequent responsibilities of the water department.

We could not find a small/medium sized crane upfit that would fit our needs and our budget in 2023 due to COVID related country wide metal shortages. The cranes that we did find were overpriced and most didn't meet the specifications that we needed.

Debra has been working on it again this year and we have found a truck and crane package that meets the needs and fits the budget. These trucks are hard to find and get sold quickly as you can see from the spreadsheet. I've attached an example photo as the truck has not yet been upfitted with the crane. Constituent with all of our previous vehicle discussions, this truck would improve the capability of the department and improve safety for our employees.

DPS requests the Board of Trustees approve the purchase of the 2024 Ram 3500 Tradesman pickup w/ Crane upfit from LaFontaine not to exceed \$66,574.00.

Please feel free to contact me if you have any questions.

DPS Director
Charter Township of White Lake

LaFontaine CDJR-Lansing

6131 S. Pennsylvania Ave.

Lansing, MI 48911

517-394-1022-Direct

517-394-1205-Fax

mdeacon@lafontaine.com

Name: White Lake Township
Address: 7525 Highland Rd
City: White Lake State: mi Zip: 48383
Contact: _____
Phone: _____
Email: dnigohosian@whitelaketwp.com

Date: 10/27/2025

Quote 102725

State of Michigan Contract 240000001206		
Stock 24LC0245		
D28L62	2024 Ram 3500 Tradesman Reg Cab 4x4	\$48,683.00
2UA	6.4L V8 Hemi	
PW7	Bright White	
V9X9	Cloth 40/20/40 Bench Seat	
ADB	Protection Goup	
AHD	Heavy Duty Snow Plow Prep Group	
AMP	Chrome Apperance Group	
A6B	Tradesman Level 2 Equipment Group	
CK9	Delete Carpet	
GT3	Mirror Pwr Heat Fold Telescope Chorme	
JKV	115V Auxiliary Front Power Outlet	
LHL	Auxiliary Switches	
LNC	Clearance Lamps	
NHK	Engine Block Heater	
UBD	Uconnect 5 w/ 8.4 Display	
XHC	Trailer Brake Contol	
	Includes Service Body by Knapheide	
	Crane Upfit w/ amber & green strobes	\$17,405.00
	Spray in bedliner	
Total Cost:		\$66,088.00

Signed Michelle Deacon

Please note payment is due within 30 days of delivery. Any invoices paid after 30 days may be subject to a 1.5% late fee



HOEKSTRA EQUIPMENT

260 36TH STREET SE
GRAND RAPIDS, MI 49548
Phone: (616) 241-6664 Fax: (616) 241-1111
F110210

Invoice No. E301015076
Date 10/31/2025
Order Type Service Estimate
Customer ID LAFONTAINE CDJR OF FENTON - 26837
Sales Person HOLSHOE, NICHOLAS R
Advisor HOLSHOE, NICHOLAS R
TAG #

BILL TO
LAFONTAINE CDJR OF FENTON
16555 SILVER PKWY,
FENTON, MI 48430

DELIVER TO
LAFONTAINE CDJR OF FENTON
16555 SILVER PKWY,
FENTON, MI 48430
P: (810) 936-0284

DATE PROMISED		DATE INVOICE	SALES TYPE	UNIT ID	TERMS	CUSTOMER REFERENCE	
10/23/2025 4:02:47PM			STRK	LFTGATE	NET30	CRANE	
YEAR	MAKE	MODEL	VIN	CUSTOMER UNIT #	IN SERVICE	ODOMETER IN	ODOMETER OUT
TBD	TBD	TBD	LIFTGATE		1/1/2015	0	0

Estimate Operations

ESTIMATE

JOB #1 E100

STRK TRUCK INSTALLATION LABOR

SERVICE TRUCK INSTALLATION LABOR - CRANE REINFORCEMENT PS REAR

QTY	ITEM	DESCRIPTION	UNIT PRICE	EXTD PRICE
	LABOR E100	TRUCK INSTALLATION LABOR	135.00	1,620.00
1	FSTEEL	FABRICATION STEEL	400.00	400.00

JOB #2 E307

STRK INSTALL CRANE ON CRANEMASTER BODY

SERVICE INSTALL CRANE ON CRANEMASTER BODY

Venturo® 2010E Electric-Hydraulic Service Crane – 6,000 ft/lb crane rating, 2,000 lb. maximum capacity – 10' manual reach – standard non-proportional
Non-Proportional Speed Controls/ Corded Remote Only

QTY	ITEM	DESCRIPTION	UNIT PRICE	EXTD PRICE
1	3011/ECBAAB-00	ET6K CRANE, 2000 LB CAPACITY Venturo® ET6K Electric-Hydraulic Service Crane – 6,000 ft/lb crane rating, 2,000 lb. maximum capacity – 10' manual reach – standard non-proportional corded remote control	10,250.00	10,250.00
1	3012/VEN21440	ADJUSTABLE BOOM REST	320.00	320.00
1	3012/WAY49034	300 AMP CIRCUIT BREAKER	50.00	50.00
	LABOR E307	INSTALL CRANE ON CRANEMASTER BODY	135.00	1,215.00
1	FRT	FREIGHT	595.00	595.00



HOEKSTRA EQUIPMENT

260 36TH STREET SE
GRAND RAPIDS, MI 49548
Phone: (616) 241-6664 Fax: (616) 241-1111
F110210

Invoice No. E301015076
Date 10/31/2025
Order Type Service Estimate
Customer ID LAFONTAINE CDJR OF FENTON - 26837
Sales Person HOLSHOE, NICHOLAS R
Advisor HOLSHOE, NICHOLAS R
TAG #

JOB #3 A100

STRK ACCESSORY LABOR

SERVICE ACCESSORY LABOR - NOTCH BUMPER - PUT ONE OUTRIGGER ON PS BUMPER, BUMPER IS TOUCHED UP WITH WHITE PAINT

ESTIMATE

QTY	ITEM	DESCRIPTION	UNIT PRICE	EXTD PRICE
1	3012/VEN13500	OUTRIGGER STAND	225.00	225.00
	LABOR A100	ACCESSORY LABOR	135.00	270.00

JOB #4 A100

STRK ACCESSORY LABOR

SERVICE ACCESSORY LABOR - SPRAY LINE FLOOR UP WALLS AND TOPS OF SERVICE BODY

QTY	ITEM	DESCRIPTION	UNIT PRICE	EXTD PRICE
1	3279	SPRAY LINE FLOOR UP WALLS AND TOPS	1,285.00	1,285.00
	LABOR A100	ACCESSORY LABOR	0.00	0.00

JOB #5 E134

STRK STROBE INSTALL - PER LIGHT RATE

SERVICE STROBE INSTALL - PER LIGHT RATE - 4 AMBER/GREEN 4 CORNER STROBES

QTY	ITEM	DESCRIPTION	UNIT PRICE	EXTD PRICE
4	3012/BUY8892250	STROBE,4-3/8in,4-LED,AMB/GRN	50.00	200.00
2	3012/BUY8892255	BLK MTG BRACKET	15.00	30.00
	LABOR E134	STROBE INSTALL - PER LIGHT	135.00	945.00

Estimate Operations Totals Prepay: \$0.00 Parts: \$11,075.00 Labor: \$4,050.00 Misc: \$995.00 Sublet: \$ \$17,405.00



HOEKSTRA EQUIPMENT

260 36TH STREET SE
GRAND RAPIDS, MI 49548
Phone: (616) 241-6664 Fax: (616) 241-1111
F110210

Invoice No. E301015076
Date 10/31/2025
Order Type Service Estimate
Customer ID LAFONTAINE CDJR OF FENTON - 26837
Sales Person HOLSHOE, NICHOLAS R
Advisor HOLSHOE, NICHOLAS R
TAG #

ESTIMATE

PLEASE NOTE

Thank you for your business. By my signature, I hereby agree to pay the charges as listed on my invoice, per the terms that have been set for my customer account. An inspection of the unit has been done by me for product content, workmanship, operation and is deemed acceptable and in proper working order.

Disclaimers of Warranties

Any warranties on the product sold hereby are those made by the manufacturer. The seller hereby expressly disclaims all warranties, either express or implied, including any implied warranty of merchantability or fitness for a particular purpose and the seller neither assumes nor authorizes any other person to assume for it any liability in connections with the sale of said merchandise.

Repair Facility License #F110210

QUOTE SUBJECT TO CHANGE BASED ON MANUFACTURER NOTICE OF PRICE INCREASE
OR ADDED SURCHARGE.

	ESTIMATED	BILLED
LABOR	\$4,050.00	
PARTS	\$11,075.00	
MISC	\$995.00	
SUBLET	\$1,285.00	
PREPAY	\$0.00	
SUBTOTAL	\$17,405.00	

SHOP SUPPLIES	\$486.00
MISC SUPPLIES	\$0.00
TAX	\$0.00
TOTAL	\$17,891.00

Please Remit Payment to:
HOEKSTRA TRUCK EQUIPMENT
260 36TH STREET SE
Grand Rapids, MI 49548

SIGNATURE _____

DATE/TIME _____

A surcharge of 3% will be added onto any amounts paid with a credit card.



2024 MODEL YEAR

RAM 3500 TRADESMAN REG CAB 4X4 LONG BOX

THIS VEHICLE IS MANUFACTURED TO MEET SPECIFIC UNITED STATES REQUIREMENTS. THIS VEHICLE IS NOT MANUFACTURED FOR SALE OR REGISTRATION OUTSIDE OF THE UNITED STATES.

MANUFACTURER'S SUGGESTED RETAIL PRICE OF THIS MODEL INCLUDING DEALER PREPARATION

Base Price: \$49,080

RAM 3500 TRADESMAN REG CAB 4X4
Exterior Color: Bright White Clear-Coat Exterior Paint
Interior Color: Black Interior Color
Interior: Cloth 40/20/40 Bench Seat
Engine: 6.4L V8 Heavy-Duty HEMI® MDS Engine
Transmission: 8-Speed Automatic 8HP75-LCV Transmission

STANDARD EQUIPMENT (UNLESS REPLACED BY OPTIONAL EQUIPMENT)

FUNCTIONAL/SAFETY FEATURES

Advanced Multistage Front Air Bags
Supplemental Side-Curtain Front Air Bags
Supplemental Front Seat-Mounted Side Air Bags
ParkView® Rear Back-Up Camera
3.73 Axle Ratio
Manual Shift-On-The-Fly Transfer Case
Electronic Stability Control
Electronic Roll Mitigation
Hill-Start Assist
Traction Control
Trailer Sway Damping
Anti-Lock 4-Wheel Disc Brakes
730-Amp Maintenance-Free Battery
180-Amp Alternator
Sentry Key® Theft Deterrent System
Push-Button Start
Power Accessory Delay
Tire Pressure Information System
Tire-Fill Alert
Tailgate-Ajar Warning-Lamp

INTERIOR FEATURES

Uconnect® 3 with 5-Inch Touch Screen Display
Full-Function Media Hub with 2-USB Plus Aux Port
40/20/40 Split Bench Seat
12-Volt Auxiliary Power Outlet
Tilt Steering Column
Temperature and Compass Gauge
Cluster with 3.5-Inch TFT Color Display
Rear Dome Lamp
Rear-View Day / Night Mirror
Black Vinyl Floor Covering
Driver / Passenger Assist Handles
Behind the Seat Storage / Bin
Front Height-Adjustable Shoulder Belts

OPTIONAL EQUIPMENT (May Replace Standard Equipment)

Customer Preferred Package 2GA
Protection Group
Heavy-Duty Snow-Plow Prep Group \$245
220-Amp Alternator
Transfer Case Skid-Plate Shield
Chrome Appearance Group \$1,650
Chrome Headlamp Bezels
18-Inch x 8.0-Inch Steel Chrome-Clad Wheels
Bright Front Bumper
Bright Rear Bumper
Tradesman Level 2 Equipment Group
4-Way Front Headrests
Exterior Mirrors with Supplemental Signals

Exterior Mirrors with Heating Element
Mirror Running Lights
Overhead Console
Power Windows with Front One-Touch-Down Feature
Rear Sliding Window
Remote Keyless-Entry
SiriusXM® with 3-Month Radio Sub Call 800-643-2112
Speed-Sensitive Power-Locks
Delete Carpet
Power Heat/Fold/Telescoping Mirrors \$275
Automatic Power-Folding Mirrors
Forward and Reverse Utility Lights
115-Volt Auxiliary Front Power-Outlet
Exterior 115V AC Outlet \$255
400W Inverter
Instrument Panel Mounted Auxiliary Switches \$155
Clearance Lamps \$95
Engine Block Heater \$95
Uconnect® 5 with 8.4-Inch Touch Screen Display \$815
Selectable Tire-Fill Alert
Apple CarPlay®
Google Android Auto™
4G LTE Wi-Fi Hot Spot with Trial Included
Ram Connect (Connected Services) with Trial
Trailer Brake Controller \$395

Destination Charge \$1,995

TOTAL PRICE: * \$55,055

WARRANTY COVERAGE

5-year or 60,000-mile Powertrain Limited Warranty.
3-year or 36,000-mile Basic Limited Warranty.
Ask Dealer for a copy of the limited warranties or see your owner's manual for details.

5 YEAR / 60,000 MILE
POWERTRAIN WARRANTY

Assembly Point/Port of Entry: SALTILLO, MEXICO

VIN: 3C6-3R3AJ0RG-150332

LA-VIN: 9140

0314-1

SHIP TO:

SOLD TO:



THIS LABEL IS ADDED TO THIS VEHICLE TO COMPLY WITH FEDERAL LAW. THE LABEL CANNOT BE REMOVED OR ALTERED PRIOR TO DELIVERY TO THE ULTIMATE PURCHASER.

* STATE AND/OR LOCAL TAXES IF ANY, LICENSE AND TITLE FEES AND DEALER SUPPLIED AND INSTALLED OPTIONS AND ACCESSORIES ARE NOT INCLUDED IN THIS PRICE. DISCOUNT, IF ANY, IS BASED ON PRICE OF OPTIONS IF PURCHASED SEPARATELY.

For more information visit: www.ramtrucks.com
or call 1-866-RAMINFO

FCA US LLC

California Air Resources Board

Gasoline Vehicle

Environmental Performance

These ratings are not directly comparable to the U.S. EPA/DOT light-duty vehicle label ratings
For information on how to compare, please see www.arb.ca.gov/ep_label

Protect the environment. Choose vehicles with higher ratings:
Greenhouse Gas Rating (tailpipe only) **Smog Rating** (tailpipe only)



Vehicle emissions are a primary contributor to climate change and smog. Ratings are determined by the California Air Resources Board based on this vehicles measured emissions.

CALIFORNIA
AIR RESOURCES BOARD

GOVERNMENT 5-STAR SAFETY RATINGS

This vehicle has not been rated by the government for overall vehicle score, frontal crash, side crash, or rollover risk.

Source: National Highway Traffic Safety Administration (NHTSA)
www.safercar.gov or 1-888-327-4236



VEHICLE PROTECTION
A PRODUCT OF FCA US LLC

Ask for Mopar Vehicle Protection for your vehicle. We Built It. We Back It.

LaFontaine Chrysler Jeep Dodge Ram Fiat Lansing

6131 S. Pennsylvania Ave., Lansing, MI 48911

Phone: (877) 465-0124



2024 Ram 3500 Regular Cab 4WD Knapheide Service Truck Stock #24LC0245



Pricing Details

Family Deal Price	\$48,668
-------------------	----------

Chassis Details

Stock Number	24LC0245	Vehicle VIN	3C63R3AJ0RG150332
Stock Type	New	Interior Color	Black
Year	2024	Seating Capacity	3
Make	Ram	Exterior Color Description	White
Model	Ram 3500	Engine Cylinder Count	8
Class	3	Transmission Type	Automatic
Drivetrain	4WD	Fuel Type	Gasoline
Wheelbase	140	Engine Make	Chrysler
Cab Type	Regular	Engine Size (L)	6.4
Vehicle Trim	Tradesman	Horsepower	410
		Brake Type	Hydraulic

Body Details

Body Type	Service Truck	Bumper Width	78"
Body Model	A698	Bumper Color	Black

Body Material	Aluminum	Compartment Depth	14.5"
Body Length	8' 3-1/4"	Floor Material	Aluminum
Body Width	78"	Lighting Type	LED
Body Height	40"	Lighting Description	Surface Mount S/T/T and B/U Light
Body Inside Width	49"	Lighting Location	Exterior
Bumper Description	Galva-Grip Bumper	Shelving Description	Standard Shelving Package
		Tailgate Description	Slam Lock Tailgate

Aluminum Service Body Features

Our aluminum service truck beds offer the most innovative design and superior construction.

Tested in the harshest lab environments, automotive proving grounds and by customers like you, our Aluminum Service Bodies are built to perform. Additionally, military-grade aluminum and structural adhesives that ensure maximum strength and longevity for your work truck.

What does this mean for you? The corrosion resistance of aluminum, an impactful increase in payload and a truck bed as durable as steel. When it comes to Knapheide, lightweight doesn't mean light duty.

Vehicle Options

Chrome Appearance Group	Mirror Running Lights
Heavy Duty Snow Plow Prep Group	Power Adjust Mirrors
Protection Group	Power Heat Fold Telescope Mirrors
Quick Order Package 2GA Tradesman	Power Heated Fold Telescope Mirrors
Tradesman Level 2 Equipment Group	Power Telescoping Mirrors
4 Speakers	Power-Adjustable Convex Aux Mirrors
AM/FM radio	Rear step bumper
Bluetooth Handsfree Phone & Audio	400W Inverter
GPS Antenna Input	4G LTE Wi-Fi Hot Spot
Integrated Center Stack Radio	8.4" Touchscreen Display
Radio data system	All R1 Low Radios
Radio: Uconnect 3 w/5" Display	All Radio-Equipped Vehicles
Radio: Uconnect 5 w/8.4" Display	Apple CarPlay

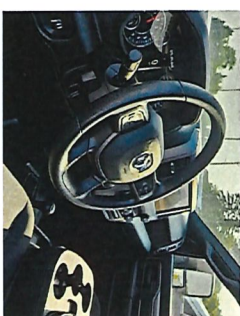
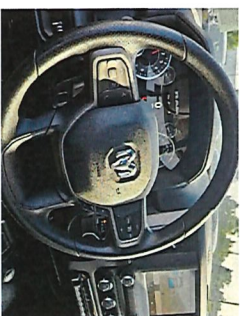
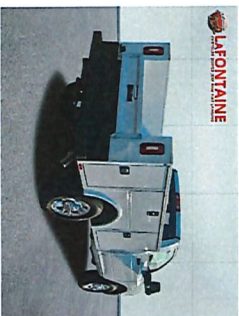
SiriusXM Radio Service	Carpet Floor Covering
SiriusXM Satellite Radio	Compass
Air Conditioning	Connectivity - US/Canada
115V Auxiliary Front Power Outlet	Dash Pass Thru Wire Circuits
Exterior 115V AC Outlet	Driver door bin
Front 1-Touch Down Power Windows	For Details Visit DriveUconnect.com
Power steering	For More Info, Call 800-643-2112
Remote Keyless Entry	Front Floor Mats
Speed Sensitive Power Locks	Front reading lights
Tip Start	Global Telematics Box Module (TBM)
Traction control	Google Android Auto
4-Wheel Disc Brakes	I/P Mounted Auxiliary Switches
ABS brakes	Illuminated entry
Bright Front Bumper	Integrated Voice Command w/Bluetooth
Bright Rear Bumper	MOPAR Front Rubber Floor Mats
Dual front impact airbags	Outside temperature display
Dual front side impact airbags	Overhead Console
Emergency communication system: SiriusXM Guardian	Overhead Cupholder Lamp
Front anti-roll bar	Passenger vanity mirror
Low tire pressure warning	Remote USB Port - Charge Only
Occupant sensing airbag	Selectable Tire Fill Alert
Overhead airbag	Tachometer
Brake assist	Tilt steering wheel
Electronic Stability Control	Upgraded Door Trim Panel
ParkView Rear Back-Up Camera	Voltmeter
Chrome Headlamp Bezels	2-Way Front Head Restraints
Delay-off headlights	4 Way Front Headrests
Fully automatic headlights	40/20/40 Split Bench Seat
Speed control	Cloth 40/20/40 Bench Seat
220 Amp Alternator	Front Armrest w/Cupholders
Electronically Controlled Throttle	HD Vinyl 40/20/40 Split Bench Seat
Engine Block Heater	Manual Adjust 4-Way Driver Seat
Auto Power-Folding Mirrors	Manual Adjust 4-Way Front Passenger Seat
	Front Center Armrest w/Storage

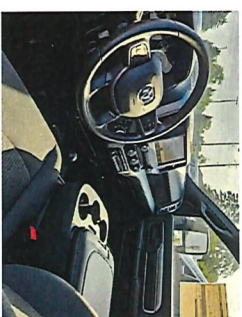
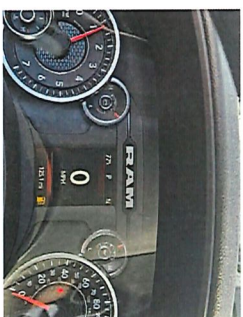
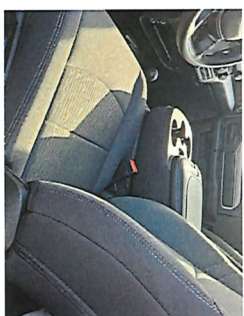
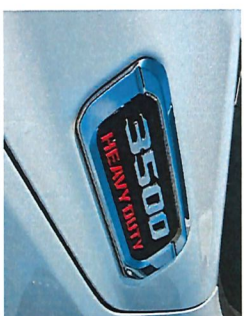
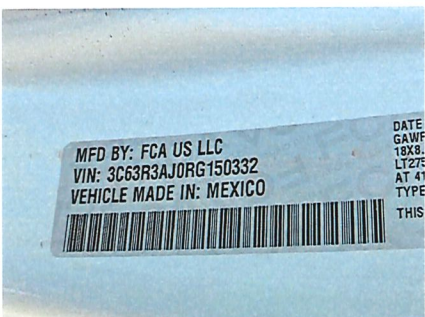
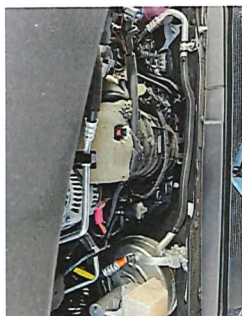
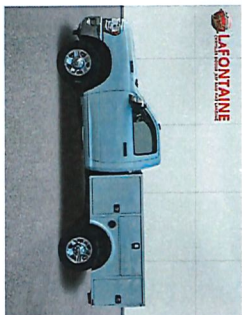
Black Exterior Mirrors	Passenger door bin
Chrome Grille Surround	Storage Tray
Clearance Lamps	Trailer Brake Control
Exterior Mirrors Courtesy Lamps	Trailer Light Check
Exterior Mirrors w/Heating Element	Bright Wheel Skins
Exterior Mirrors w/Supplemental Signals	Center Hub
Forward & Reverse Utility Lights	Wheels: 18" x 8.0" Steel
Front Bumper Sight Shields	Wheels: 18" x 8.0" Steel Chrome Clad
Front License Plate Bracket	Rear Sliding Window
Manual Folding Exterior Mirrors	Variably intermittent wipers
Manual Telescoping Mirrors	3.73 Axle Ratio
Matte Black Mesh w/Chrome Grille	Knapheide Aluminum Service Body

Vehicle Notes

2024 Ram 3500 Tradesman Knapheide Aluminum Service Body. Priced below KBB Fair Purchase Price!NOTE:
All Equipment Listed May Not Be Available. Price may include body upfit.

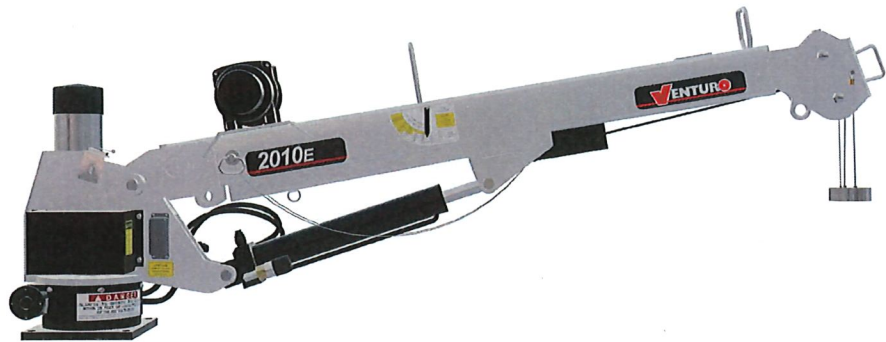
Photos





ELECTRIC - HYDRAULIC CRANES

2010E (ET6K)



The 2010E service crane is a light-weight, cost-effective choice for a variety of industries and general service applications on any truck with a GVWR of 8,000 lbs or less. The 2010E features 2,000 lbs of maximum capacity and a 6,000 ft-lb crane rating.

SPECIFICATIONS

Lifting Capacities:	2,000 lbs
Crane Rating:	6,000 ft-lbs
Mounting Space:	12 1/2" x 17 1/4"
Stowed Height:	24-1/4"
Rope Diameter:	3/16" @ 50'
Line Pull Speed	30 ft/min (Single-line) 18 ft/min (Double-line)
Max. Single-line:	1,000 lbs
Max. Double-line:	2,000 lbs
Rotation:	360° Continuous
Power Supply Requirements:	Power Supply: Electric 12V DC Requirements: 12v DC Battery
Hydraulic Req:	Self-Contained w/ Power Unit
Boom Elevation:	-8° to +75°
Controls:	Electric 12V DC On/Off Function
Boom Extension:	Manual: 6' - 10'
Weight:	380lbs
Minimum Vehicle Class:	Class 2 (8,000 lbs GVWR)
Optional:	- Corded - Corded & Wireless

FEATURES

■ INDUSTRY LEADING IN ELECTRIC-HYDRAULIC CRANES

■ POWERFUL DC ELECTRIC WINCH

The ET series winches combine a powerful permanent magnet DC motor with robust sealing with proven 3-stage, all-metal gear train. Permanent grease lubrication means years of trouble-free service.

■ MANUAL CRANE OVERRIDE

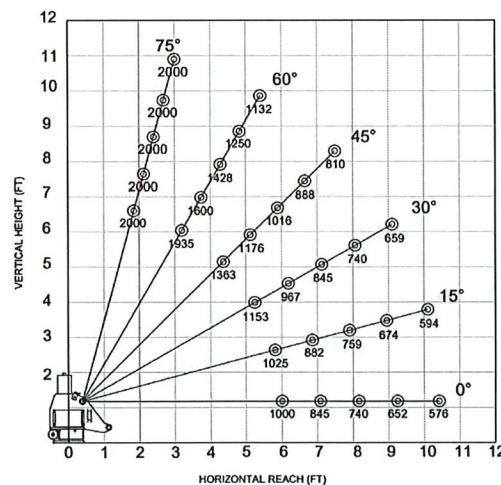
Each ET series crane gives the user the ability to operate and stow the crane if there is power loss through the remote

■ POWERFUL HYDRAULIC SLEW DRIVE

Driven from high quality durable electric motor

■ COUNTER-BALANCE VALVE

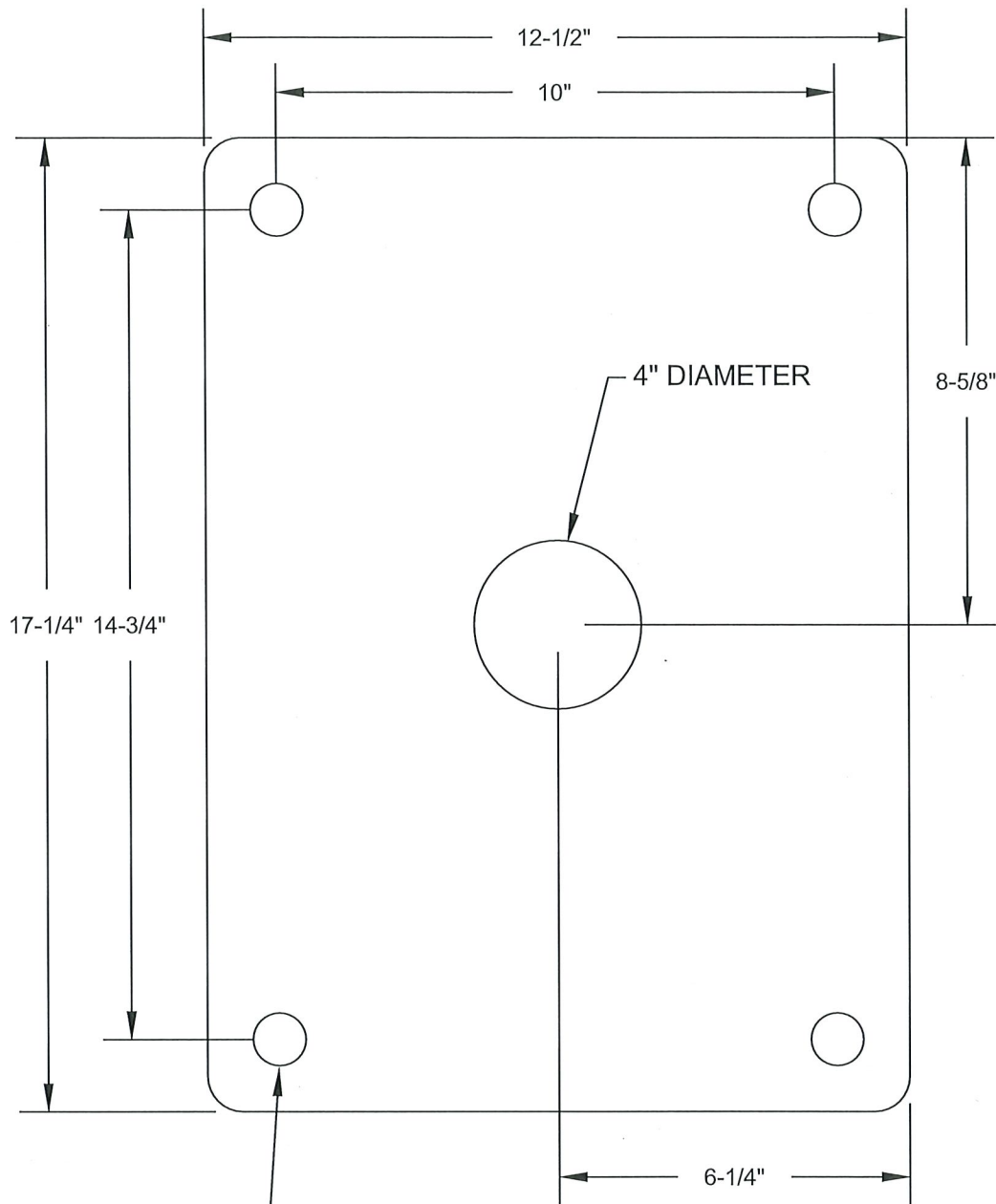
Counterbalance valving in all cylinders for increase safety and protection during operation



*OSHA Certification Exempt

*Venturo Body: VP16 Crane Service Body

CRANE BASE MOUNTING HOLE TEMPLATE



SIZED FOR 7/8"-9 GRADE 8 MOUNTING BOLTS
TORQUE TO 455 FT*LBS



VENCO VENTURO INDUSTRIES LLC
CINCINNATI, OHIO

TITLE
MOUNTING DIMENSIONS

ET6K

DATE
05-30-23

SUPERSEDES
-

SECTION
C100

26011

DEALERSHIP	VEHICLE	TRUCK COST	CRANE/ACCESSORIES	TOTAL
LaFontaine, Dexter, MI Jerry Kinne - 517-881-3997	2024-Chevrolet Silverado 2500 Regular Cab-4WD	\$63,783.00	\$17,542.50	\$81,325.50
	2026-F250-Regular Cab	\$48,649.50	\$26,347.50	\$74,997.00
	2026-Ram 3500	\$41,000.00	\$25,000.00	\$66,000.00 SOLD
	2024-Ram 3500	\$48,683.00	\$17,405.00	\$66,088.00
Bob Maxey Ford, Howell, MI Scott Maxey - 517-338-0220	2026 F250 SRW 4X4 Regular Cab XL-4WD	\$53,515.00	\$20,925.60	\$74,440.60 WAITING FOR PRICING ON CRANE 2010E
Bowman Cheverolet, Clarkston, MI Cameron Bell - 248-752-2960	2024-Chevrolet Silverado 2500 Regular Cab	\$64,905.56	\$11,465.00	\$76,370.56 SOLD