

# WHITE LAKE TOWNSHIP PARKS & RECREATION COMMITTEE

**FROM:** David Waligora, AICP Senior Planner  
**DATE:** June 3, 2026  
**RE:** **Stanley Park Playground Award and Equipment Selection**

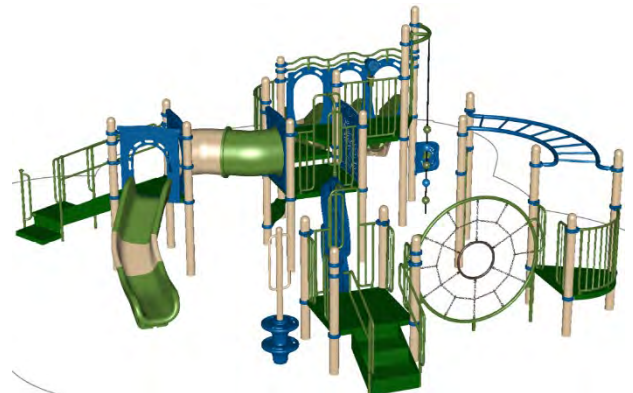
The Township has been received a \$75,000 donation from Kroger Company of Michigan to fund the installation of a playground at Stanley Park. Staff identified a similar donation previously provided by Kroger within the Ingham County Parks system and worked to establish a partnership to benefit White Lake Township. **The donation provides an opportunity to add a family-oriented recreational amenity to Stanley Park and further expand opportunities for children and families utilizing the park, consistent with the proposed scale and vision identified in the Township Parks & Recreation Plan.**



To evaluate potential playground options, staff contacted three playground vendors and requested conceptual layouts and pricing for playground equipment that could be accommodated within, or reasonably near, the available funding level. The resulting proposals include a variety of playground styles ranging from traditional play structures to climbing-oriented and adventure-focused designs.

**The purpose of this memo is to obtain feedback and direction from the Parks & Recreation Committee regarding the preferred playground concept prior to design refinement and preparation of a recommendation to the Township Board.**

Staff conducted an informal review of the submitted concepts utilizing factors such as play value, age-range accommodation, visual character, anticipated user appeal, and overall compatibility with Stanley Park's character and intended function. While each proposal offers unique strengths and would provide quality recreational amenities, staff generally found the **Playcraft R502118BA** concept to provide the strongest overall balance of play opportunities, visual appeal, user capacity, future expansion



potential, and compatibility with the available funding levels. Staff found the proposal offered a strong mix of climbing, sliding, and social play opportunities while maintaining flexibility for future additions such as swings or other play features

At this time, staff is seeking Committee input regarding:

1. Which playground concept is preferred.
2. Whether the Committee favors a traditional play structure or a more climbing/adventure-oriented design.
3. Whether amenities such as swings should be included in the initial installation or considered as a future phase of park improvements.
4. Any additional features or considerations the Committee would like staff to explore prior to making a recommendation to the Township Board.

The attached playground concepts and pricing information are provided for the Committee's review and discussion.

While the Stanley Park Conceptual Master Plan identified a playground within an approximately 60-foot diameter activity node, the final park improvements differ somewhat from the original conceptual layout. Staff will work with park consultants for the optimum location.

Thank you.

David Waligora, AICP  
Senior Planner  
White Lake Township



White Lake Township  
 Stanley Park Conceptual Master Plan

Draft January 2021

Beckett & Raeder



	CONCRETE SURFACE
	SPALLSTONE SURFACE
	AGGREGATE WALK
	GRAVEL PAVEMENT
	BIOMIMETIC SURFACE
	POURED-IN-PLACE PLAYGROUND SURFACE

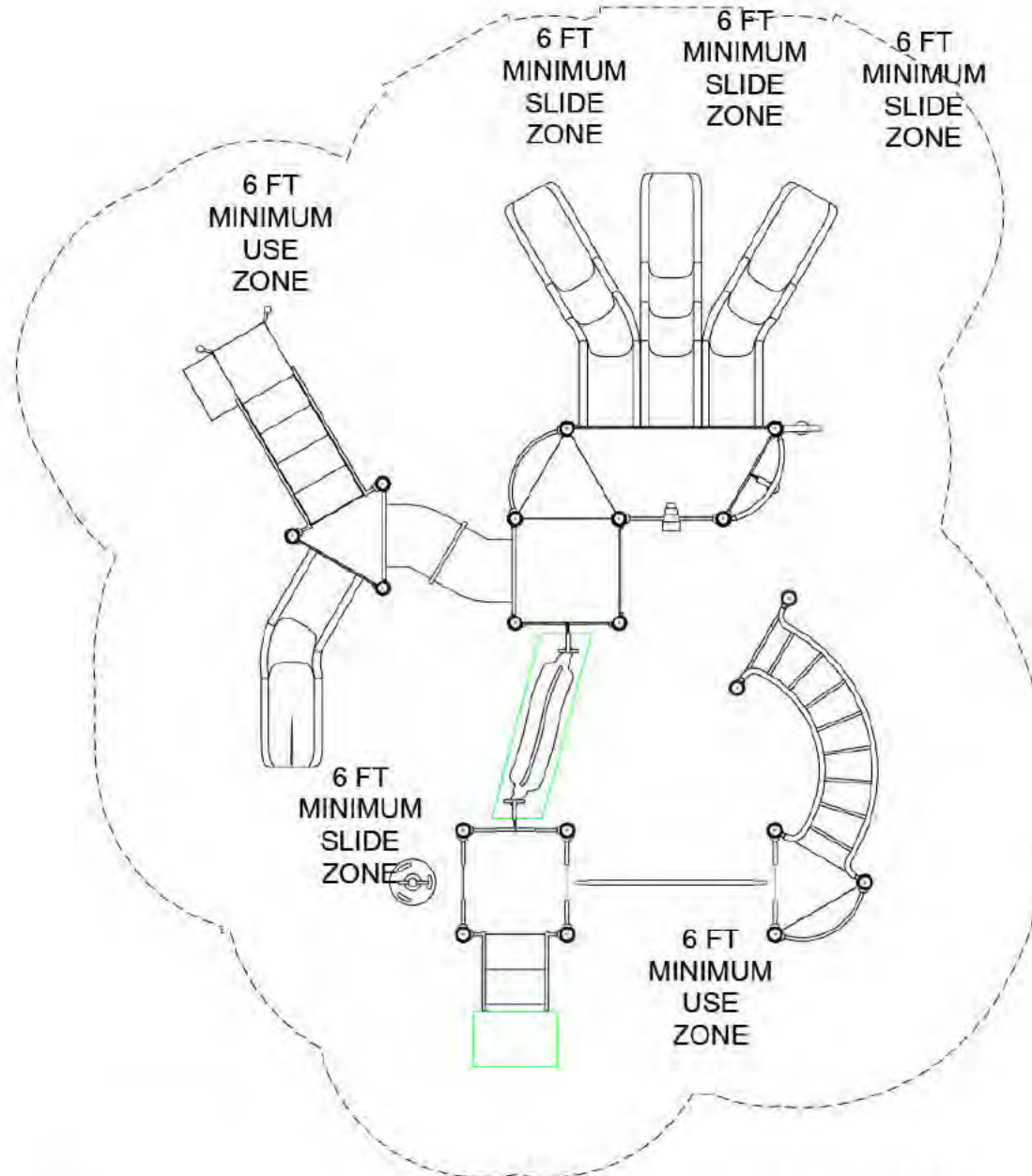
0 50 100 150

**R502118BA**  
**SITE PLAN**

**ADA ACCESSIBILITY GUIDELINES - ADAAG CONFORMANCE**

ELEVATED	ACCESSIBLE	RAMP ACCESSIBLE	GROUND	TYPES
9	5/5	0/0	3/3	5/3

**R5** FOR KIDS AGES 5-12



**GENERAL NOTES**

This Preliminary Site Plan is based on measurements that were provided in the initial planning phase. All dimensions must be verified prior to the submission of a purchase order. Playcraft Systems will not be held responsible for any discrepancies between actual dimensions and dimensions submitted in the planning phase.

The Minimum Use Zone for a play structure is based on the product design at the time of proposal. Components and structure designs may be subject to change which may affect dimensions. Therefore, before preparing the site, we strongly recommend obtaining final drawings from the factory (available after the order is placed and included in the Assembly Manual).

**WARNING:** Accessible safety surfacing material is required beneath and around this equipment that has a critical height value (Fall Height) appropriate for the highest accessible part of this equipment. Refer to the CPSC'S Handbook For Public Playground Safety, Section 4: Surfacing.

**PROJECT #** R502118BA  
**DATE** 3/6/2026

**Play Environments Design, LLC**  
**MIN. USE ZONE** 38' x 43' (11.301m x 12.868m)



**R502118BA**  
**SW VIEW**

**R5**

FOR KIDS  
AGES  
5-12

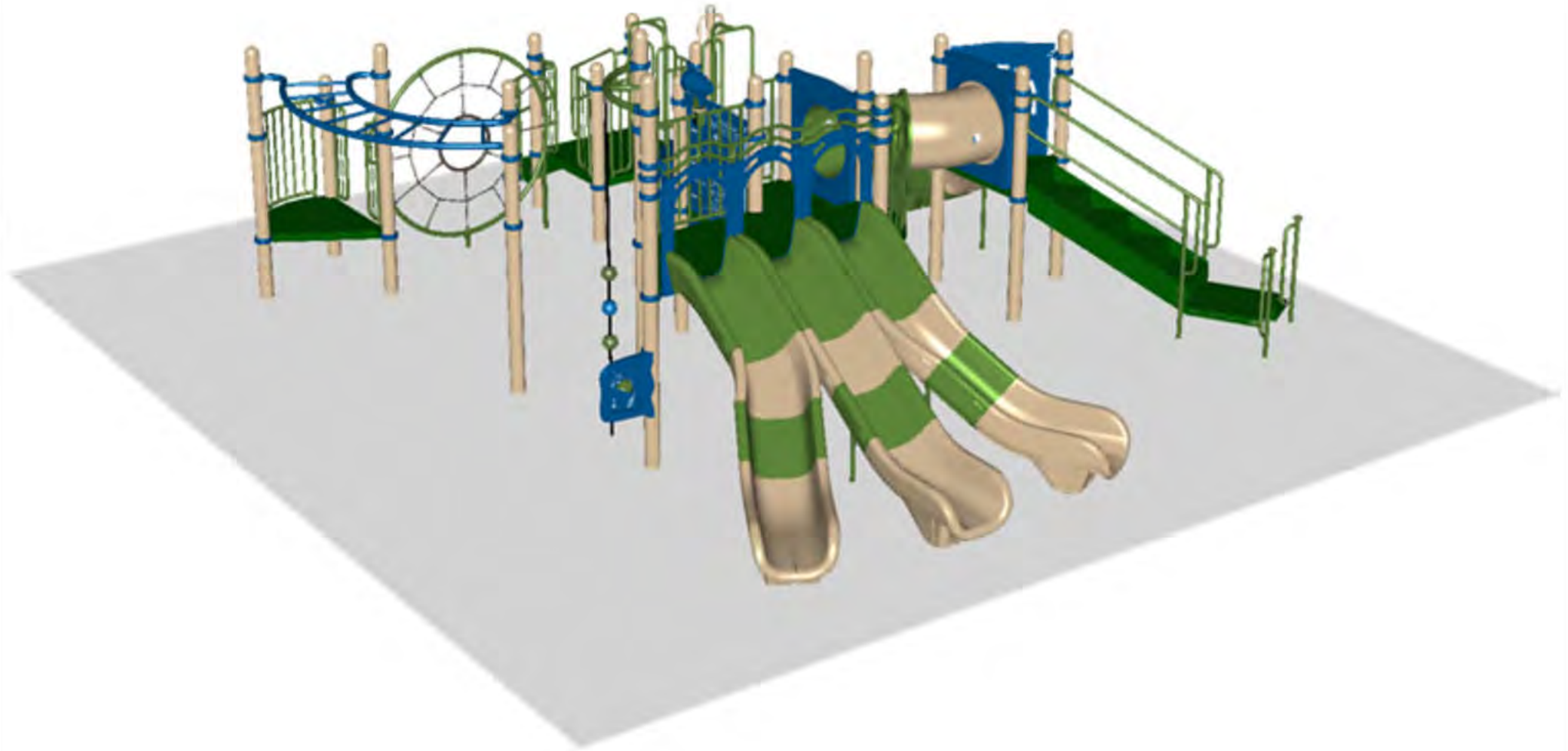


**STRUCTURE #** R502118BA  
**PROJECT #** R502118BA  
**DATE** 3/6/2026

**R502118BA**  
**NE VIEW**

**R5**

FOR KIDS  
AGES  
5-12



**STRUCTURE #** R502118BA  
**PROJECT #** R502118BA  
**DATE** 3/6/2026

**R502118BA**

**Project #** R502118BA

**Date** 3/6/2026

<b>Item / Part Number</b>	<b>Description</b>	<b>Qty</b>
<b>[R502118BA]</b>		
HS-1004-R	Collars	61
GF-7002	Dome Cap, R5	19
S-1009-R5-09ft	Post, 09ft R5	5
S-1011-R5-11ft	Post, 11ft R5	9
S-1012-R5-12ft	Post, 12ft R5	3
S-1014-R5-14ft	Post, 14ft R5	2
S-1101-R5	Square Deck	2
S-1102-R5	Tri-Deck	3
S-1106-R5	Hex Deck, Half (4 Post)	1
S-1109-R5	Balcony Deck	2
S-1201-2R5	Easy Access Stairs, 24in	1
S-1209-36-R5	Transfer Station, 48in-R	1
S-1233-2-HW	Climber, Disc 18-24in (w/ HW)	1
S-1249-DDV4R5	Geo-Wave Link 24in (Vert., Incl. DTD, 48-24)	1
S-1298-5R5	Climber, Cord 60in	1
S-1301-1830-S-R5	Wall w/ Telescope	1
S-1309-2-R5	Half Walls (Pair) R5	1
S-1310-R5	Transition Wall	1
S-1316-R5	Twister Entry Panel	1
S-1402-R5	End Access Ladder (2-Rung)	1
S-1429-R5	Traverse, Horizontal Ladder (90 deg)	1
S-1500-2S575R5	Crawl Tube, S-Shaped 57.495 (2-Sect., R)	1
S-1517-R5	Link, Web 24in	1
S-1655-4R5	Reach Panel, 48in	1
S-1661-R5	Panel Pal, Bell	1
S-1710-3-5R5-LS4R	Slide, Triple Twister 60in (L-S-R)	1
S-1710-4-L	Slide, Twister 48in (L)	1
S-1962-R5	Playseat	1



**Stanley Park-2**  
**NE VIEW**

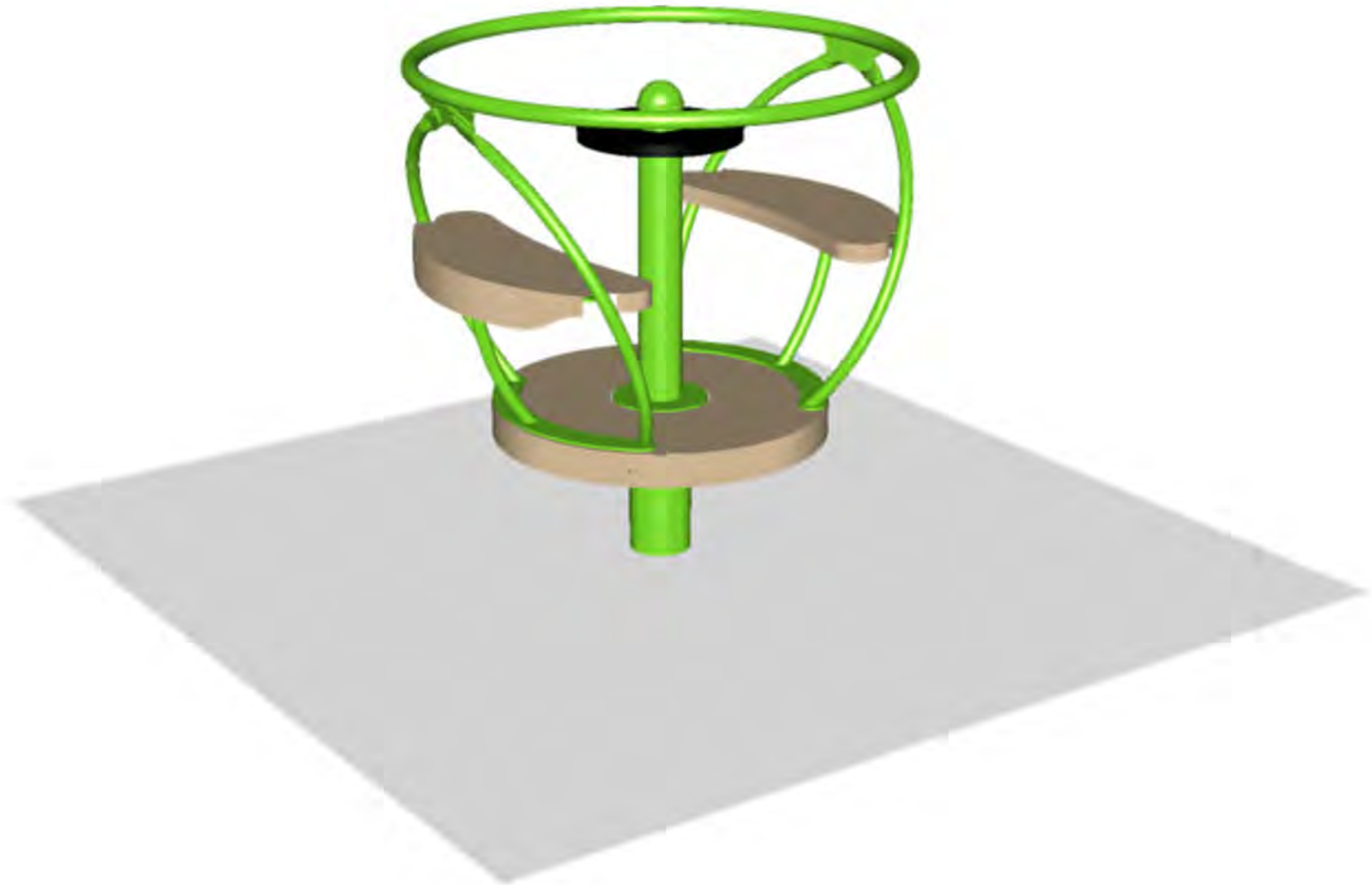
**R35**  
FOR KIDS  
AGES  
5-12



**STRUCTURE #** R35D63C6A  
**PROJECT #** R35D63C6A  
**DATE** 3/6/2026

**Stanley Park-2**  
**SW VIEW**

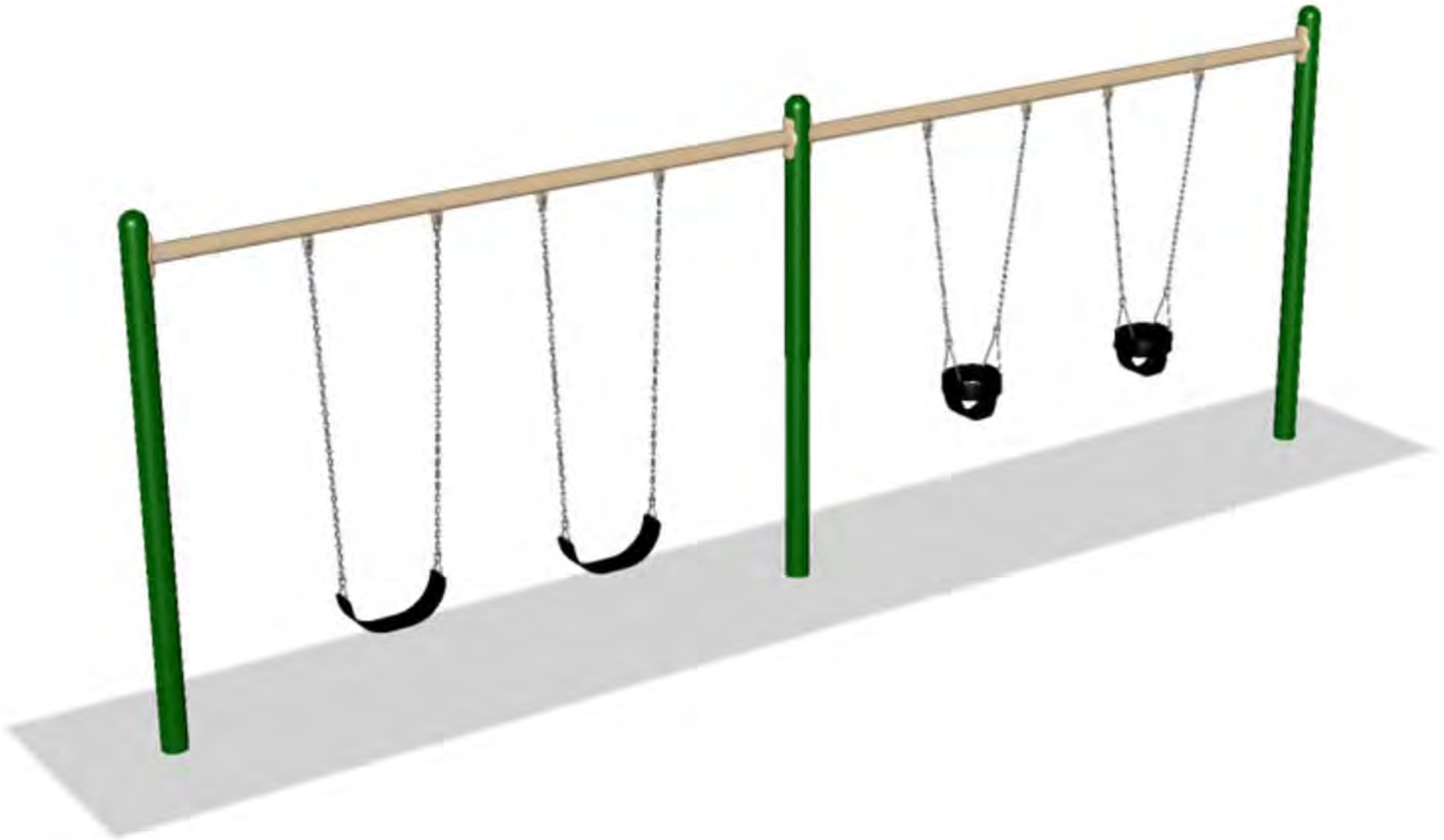
FOR KIDS  
AGES  
5-12



**STRUCTURE #** 2  
**PROJECT #** R35D63C6A  
**DATE** 3/6/2026

**Stanley Park-2**  
**SW VIEW**

FOR KIDS  
AGES  
5-12



**STRUCTURE #** 4  
**PROJECT #** R35D63C6A  
**DATE** 3/6/2026

**Stanley Park-2**

**Project #** R35D63C6A

**Date** 3/6/2026

<b>Item / Part Number</b>	<b>Description</b>	<b>Qty</b>
<b>[R35D63C6A]</b>		
HS-1004-R35	Collars	62
GG-8135	Dome Cap, R3.5	7
S-1010-R35-10ft	Post, 10ft R3.5	1
S-1011-R35-11ft	Post, 11ft R3.5	5
S-1012-R35-12ft	Post, 12ft R3.5	1
S-1014-R35-14ft	Post, 14ft R3.5	8
S-1015-R35-15ft	Post, 15ft R3.5	4
S-1101-R35	Square Deck	4
S-1105-R35	Half Deck	4
S-1209-36-R35	Transfer Station, 48in-L	1
S-1213-4R35	Climber, Firepole 42-48in	1
S-1221-4	Climber, Chain Net 42-48in	1
S-1223-4R35	Climber, Spiral 42-48in	1
S-1275-5R35	Climber, Double Deep Rung Arch 54-60in	1
S-1301-R35	Poly Wall (Standard)	3
S-1304-R35	Single Slide SitDown Wall	1
S-1309-2-R35	Half Walls (Pair) R35	2
S-1403-R35	End Access Ladder (3-Rung)	1
S-1407-R35	Traverse, Horizontal Snake Ladder	1
S-1506-R-84R35	Bridge, Suspension w/ Rails	1
S-1602-R35	Bubble Panel	1
S-1607-R35	Maze Panel	1
S-1634-R35	Labyrinth Panel	1
S-1704-5	Slide, Wave 60in (Single)	1
S-1802-R35	Roof, Square Pyramid (Ribbed)	3
S-1918-4	Climber, Banister 42-48in	1
S-1930-R35	Chinning Bar	1
<b>[spinner]</b>		
A2-2479	PC 2479 Mini-Go-Round	1
<b>[Swings]</b>		
A2-2181	PC 2181 8ft Single Post Swing Bay (2 Seat)	1
A2-2181-AB	PC 2181 8ft Single Post Swing Bay (2 Seat) AB	1
A2-311010	Full Bucket Seat	2
A2-313010	Belt Seat	2



# Stanley Park-3

## SITE PLAN 3D

### ADA ACCESSIBILITY GUIDELINES - ADAAG CONFORMANCE

ELEVATED	ACCESSIBLE	RAMP ACCESSIBLE	GROUND	TYPES
8	7/4	0/0	5/3	2/3

**R35**

FOR KIDS  
AGES  
5-12

#### GENERAL NOTES

This Preliminary Site Plan is based on measurements that were provided in the initial planning phase. All dimensions must be verified prior to the submission of a purchase order. Playcraft Systems will not be held responsible for any discrepancies between actual dimensions and dimensions submitted in the planning phase.

The Minimum Use Zone for a play structure is based on the product design at the time of proposal. Components and structure designs may be subject to change which may affect dimensions. Therefore, before preparing the site, we strongly recommend obtaining final drawings from the factory (available after the order is placed and included in the Assembly Manual).

**WARNING:** Accessible safety surfacing material is required beneath and around this equipment that has a critical height value (Fall Height) appropriate for the highest accessible part of this equipment. Refer to the CPSC'S Handbook For Public Playground Safety, Section 4: Surfacing.



PROJECT # R3570C1EA  
DATE 3/6/2026

Play Environments Design, LLC  
MIN. USE ZONE 73' x 40' (22.21m x 12.133m)



**Stanley Park-3**  
**SW VIEW**

**R35** FOR KIDS  
AGES  
5-12



**STRUCTURE #** R3570C1EA  
**PROJECT #** R3570C1EA  
**DATE** 3/6/2026



**Stanley Park-3**  
**SE VIEW**

**R35** FOR KIDS  
AGES  
5-12



**STRUCTURE #** R3570C1EA  
**PROJECT #** R3570C1EA  
**DATE** 3/6/2026

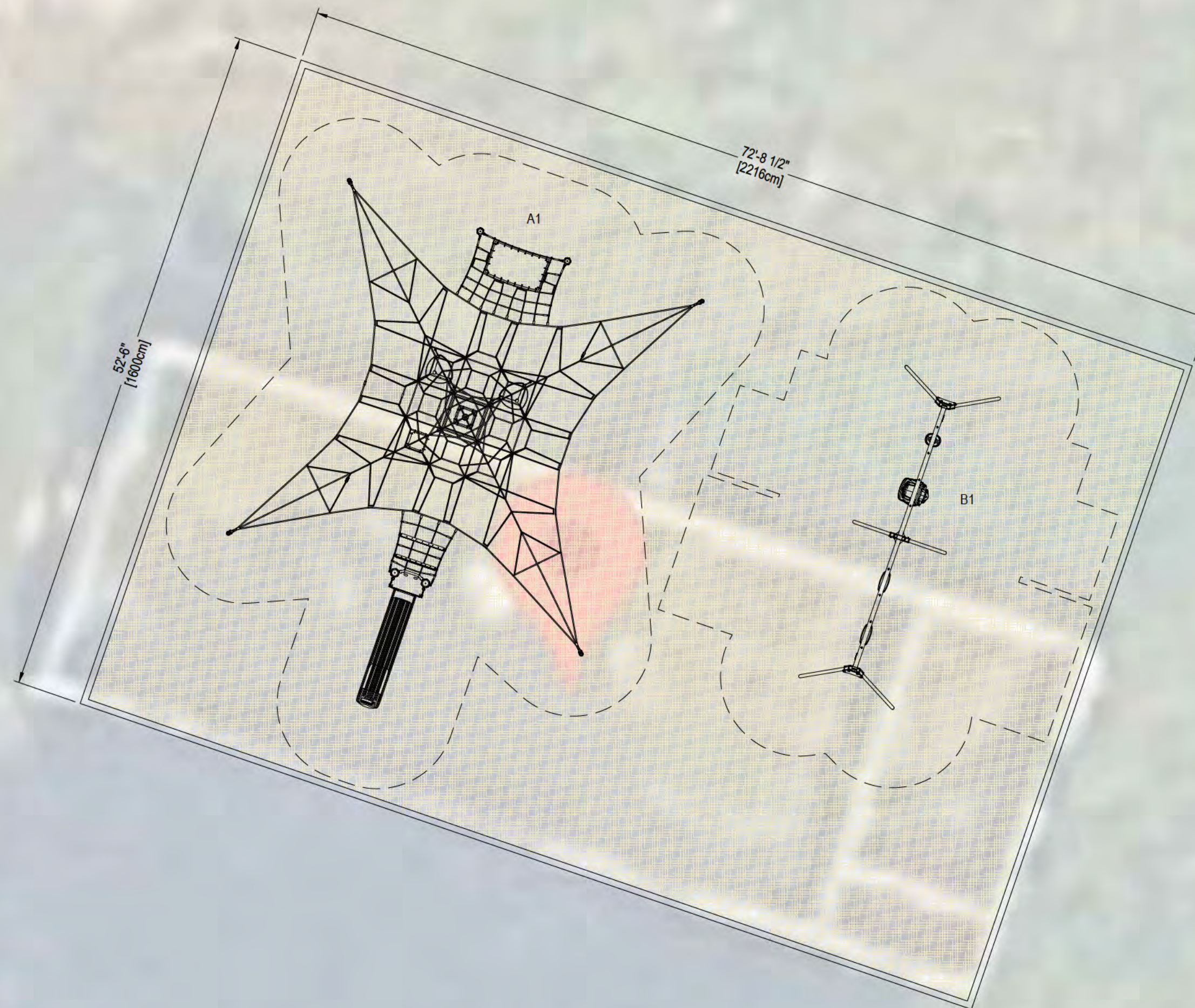
**Stanley Park-3**

**Project #** R3570C1EA

**Date** 3/6/2026

<b>Item / Part Number</b>	<b>Description</b>	<b>Qty</b>
<b>[R3570C1EA]</b>		
HS-1004-R35	Collars	43
GG-8135	Dome Cap, R3.5	6
S-1011-R35-11ft	Post, 11ft R3.5	2
S-1012-R35-12ft	Post, 12ft R3.5	2
S-1013-R35-13ft	Post, 13ft R3.5	2
S-1016-R35-16ft	Post, 16ft R3.5	8
S-1101-R35	Square Deck	3
S-1102-R35	Tri-Deck	2
S-1206-24R35	ADA Stairs, 24in Rise w/ Walls	1
S-1209-36-R35	Transfer Station, 48in-R	1
S-1210-72	Climber, Vertical Ladder 66-72in	1
S-1218-6	Climber, Arch 66-72in	1
S-1233-6-HW	Climber, Disc 66-72in (w/ HW)	1
S-1235-4R35	Climber, Ladder 42-48in	1
S-1281-L-6R35	Climber, Arch Twist 72in (Left)	1
S-1304-R35	Single Slide SitDown Wall	2
S-1309-2-R35	Half Walls (Pair) R35	3
S-1314-R35L	Access Wall (Left)	1
S-1316-R35	Twister Entry Panel	1
S-1509-84TR35	Bridge, Burma w/ Traverse (84in)	1
S-1604-R35G	Chime Panel	1
S-1704-6	Slide, Wave 72in (Single)	2
S-1706-S6R-R35	Slide, Twister Spiral 72 (R)	1
S-1710-4-L	Slide, Twister 48in (L)	1
S-1802-R35	Roof, Square Pyramid (Ribbed)	2
S-1962-R35	Playseat (Double Post)	1
<b>[Swings]</b>		
A2-131410	Inclusive Seat	1
A2-2181	PC 2181 8ft Single Post Swing Bay (2 Seat)	1
A2-2181-AB	PC 2181 8ft Single Post Swing Bay (2 Seat) AB	1
A2-311010	Full Bucket Seat	1
A2-313010	Belt Seat	2






ADA ACCESSIBLE PATH TO SITE IS REQUIRED, PER 2010 ADA STANDARDS (SECTION 206)

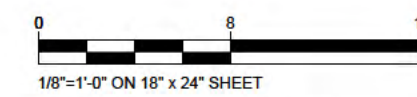
MAINTENANCE OF ASTM F1951 COMPLIANT LOOSE FILL SURFACING IS THE RESPONSIBILITY OF THE SITE OWNER TO ENSURE ADA REQUIREMENTS FOR PATH OF TRAVEL.

#	Product Number	Product Name	M.F.H.	Count
A	CRF302501-CUSTOM_2046546	Custom Small Spacenet	7'4"	1
B	KSW934-CUSTOM_20389245	Swings: 2 Basic, 1 ADA, 1 Infant	7'11"	1

 EWF AREA: 3693 SF

PERIMETER: 250'-5"

**STANLEY PARK**  
**Option 1**  
 10785 Elizabeth Lake Rd  
 White Lake, MI 48386  
 Site Plan - 5-12



MANUFACTURER'S SHOP DRAWING:

FOR USE BY CONTRACTOR, ENGINEER, OR DESIGN PROFESSIONAL OF RECORD. SEE SIGNED SALES PROPOSAL FOR COMPLETE SCOPE TO BE PROVIDED BY KOMPAN OR REPRESENTING AGENCY. CONFIRM FINAL PLAN AND SCOPE WITH KOMPAN SALES REP OR PROJECT MANAGER PRIOR TO USE FOR REVIEW, PERMITTING, OR CONSTRUCTION.

TO BE READ CONTINGENTLY WITH KOMPAN'S STANDARDS FOR SITE PREPARATION, MATERIALS AND INSTALLATION PROCESSES, PROVIDED AFTER EQUIPMENT PURCHASE. A COMPLIANT PLAYGROUND TO KOMPAN'S STANDARDS MUST SATISFY ALL REQUIREMENTS IN THE CODE OF CONDUCT.

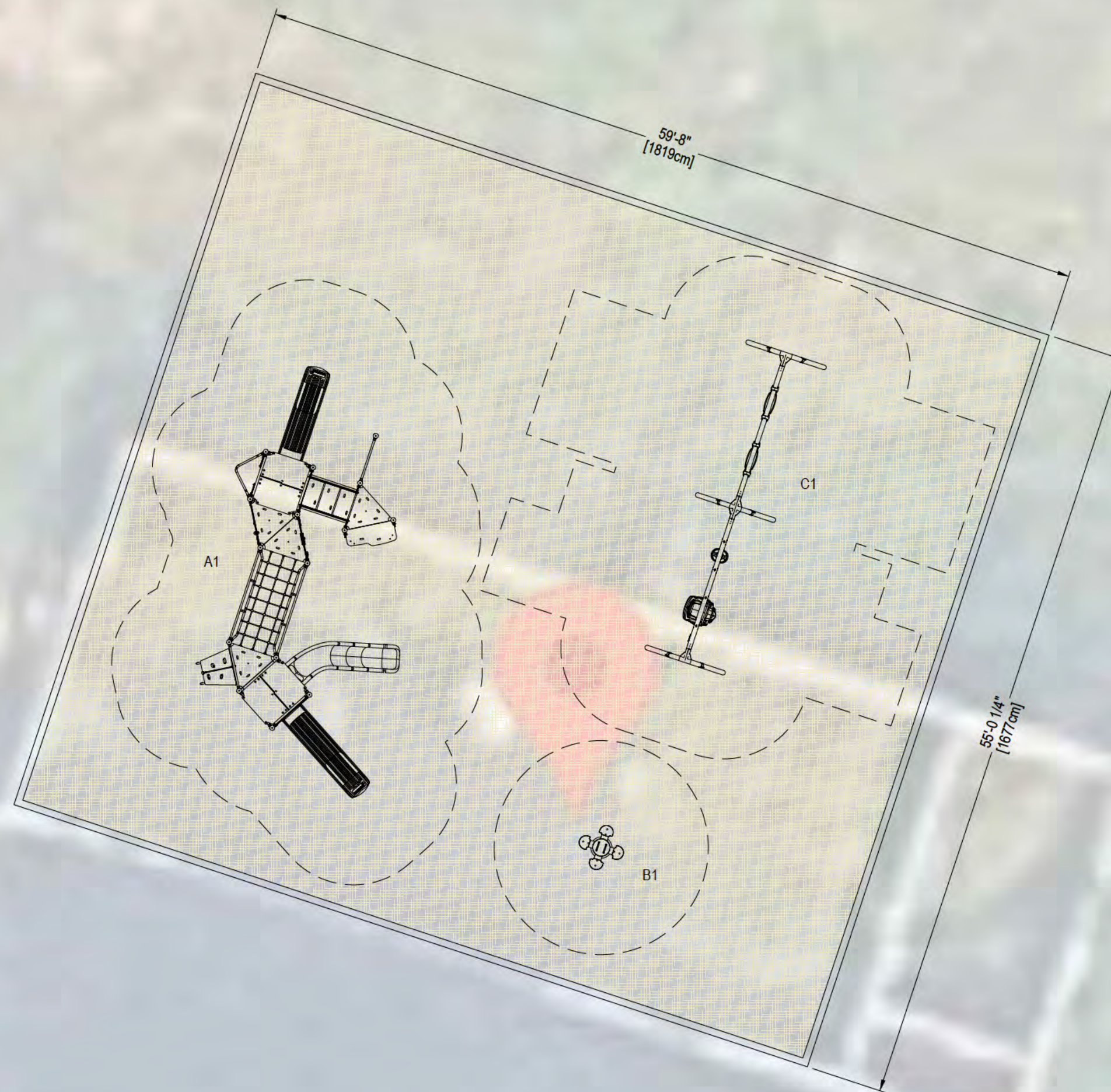
SLAB BY OTHERS UNLESS OTHERWISE NOTED. FOR SURFACE MOUNT OPTIONS, THE CONCRETE REQUIREMENTS MAY BE UP TO 5/8\"/>

DIMENSIONS OF PLAY AREA, SIZE AND ORIENTATION, LOCATIONS OF ALL EXISTING UTILITIES, EQUIPMENT AND SITE FURNISHINGS TO BE FIELD-VERIFIED PRIOR TO CONSTRUCTION.

PREPARED AND PRINTED IN USA BY KOMPAN © 2026 KOMPAN, INC. AUSTIN, TX, USA. 800-426-9788

SALES REPRESENTATIVE			SHEET	
Ashley Palushaj			K1.0-1	
REVIEW BY	DRAWN BY	DATE	REVISION NOTES	
DESIGN	MeiEwa	03/26/26	-	
REV. NO.	REV. BY	REV. DATE	-	

LAYOUT IS IN ACCORDANCE WITH ASTM F1487



ADA ACCESSIBLE PATH TO SITE IS  
REQUIRED, PER 2010 ADA STANDARDS  
(SECTION 206)

MAINTENANCE OF ASTM F1951 COMPLIANT  
LOOSE FILL SURFACING IS THE  
RESPONSIBILITY OF THE SITE OWNER TO  
ENSURE ADA REQUIREMENTS FOR PATH OF  
TRAVEL.

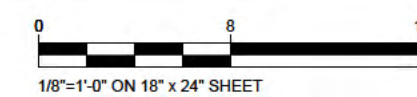
#	Product Number	Product Name	M.F.H.	Count
A	PCE21934-CUSTOM_20343842	Lhotse with Roof	4'10"	1
B	M12871-xoP	Daisy	2'0"	1
C	KSW924-CUSTOM_20401839	Swings: 2 Basic, 1 Infant, 1 ADA	7'11"	1

EWF AREA: 3170 SF

PERIMETER: 229'-5"

## STANLEY PARK Option 2

10785 Elizabeth Lake Rd  
White Lake, MI 48386  
Site Plan - 2-5 & 5-12



**KOMPAN!**

MANUFACTURER'S SHOP DRAWING:

FOR USE BY CONTRACTOR, ENGINEER, OR DESIGN PROFESSIONAL OF RECORD. SEE SIGNED SALES PROPOSAL FOR COMPLETE SCOPE TO BE PROVIDED BY KOMPAN OR REPRESENTING AGENCY. CONFIRM FINAL PLAN AND SCOPE WITH KOMPAN SALES REP OR PROJECT MANAGER PRIOR TO USE FOR REVIEW, PERMITTING, OR CONSTRUCTION.

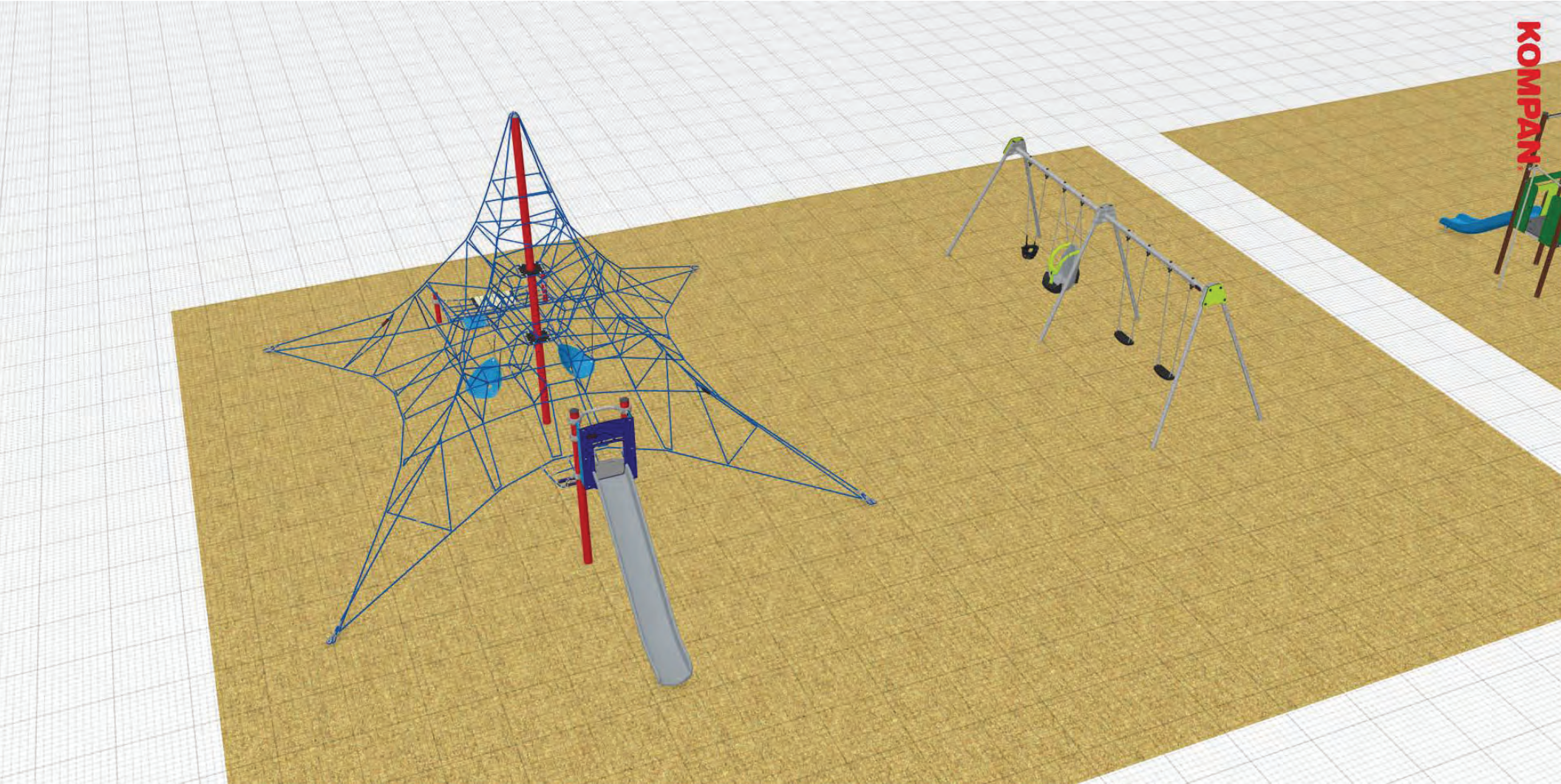
TO BE READ CONTINGENTLY WITH KOMPAN'S STANDARDS FOR SITE PREPARATION, MATERIALS AND INSTALLATION PROCESSES, PROVIDED AFTER EQUIPMENT PURCHASE A COMPLIANT PLAYGROUND TO KOMPAN'S STANDARDS MUST SATISFY ALL REQUIREMENTS IN THE CODE OF CONDUCT.

SLABS BY OTHERS UNLESS OTHERWISE NOTED, FOR SURFACE MOUNT OPTIONS, THE CONCRETE REQUIREMENTS MAY BE UP TO 5/8" OF 3,500 PSI MINIMUM COMPRESSIVE STRENGTH; CONTACT KOMPAN FOR SPECIFIC PRODUCT REQUIREMENTS. ALL COMPOSITE STRUCTURES SHOWN REQUIRE A SITE GRADE OF 2% MAXIMUM, 1% OPTIMAL. SPECIFICATIONS FOR EACH KOMPAN STRUCTURE MAY BE FOUND AT KOMPAN.COM/KOMPANMASTER.

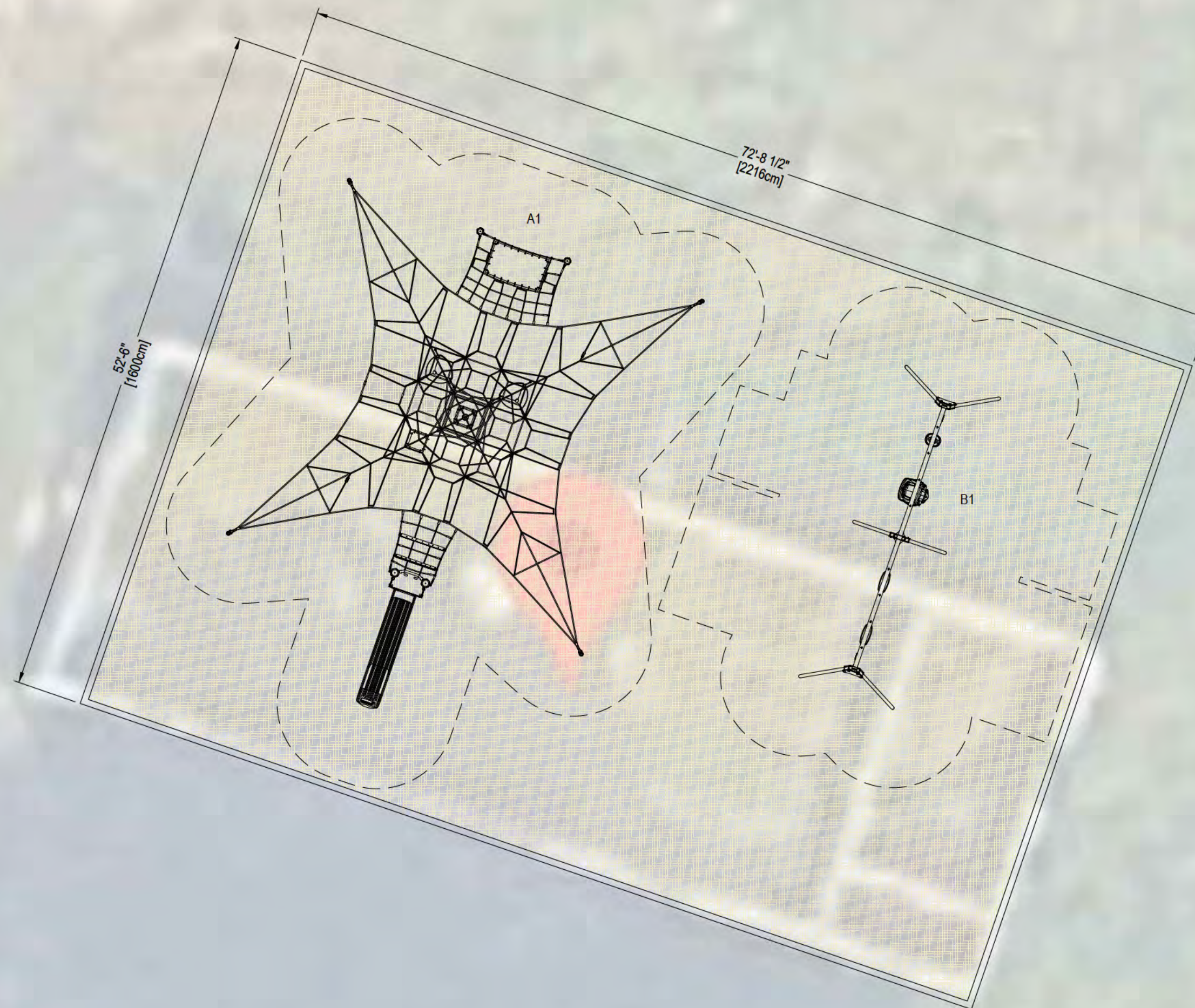
DIMENSIONS OF PLAY AREA, SIZE AND ORIENTATION, LOCATIONS OF ALL EXISTING UTILITIES, EQUIPMENT AND SITE FURNISHINGS TO BE FIELD VERIFIED PRIOR TO CONSTRUCTION.  
PREPARED AND PRINTED IN USA BY KOMPAN © 2026 KOMPAN, INC. AUSTIN, TX, USA 800-426-9788

SALES REPRESENTATIVE			SHEET	
Ashley Palushaj			K1.0-2	
REVIEW BY	DRAWN BY	DATE	REVISION NOTES	
DESIGN	MeiEwa	03/26/26		
REV. NO.	REV. BY	REV. DATE		
-	-	-		

LAYOUT IS IN ACCORDANCE WITH ASTM F1487




KOMPAN



ADA ACCESSIBLE PATH TO SITE IS REQUIRED, PER 2010 ADA STANDARDS (SECTION 206)

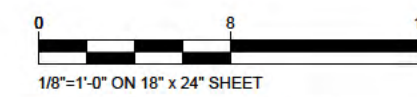
MAINTENANCE OF ASTM F1951 COMPLIANT LOOSE FILL SURFACING IS THE RESPONSIBILITY OF THE SITE OWNER TO ENSURE ADA REQUIREMENTS FOR PATH OF TRAVEL.

#	Product Number	Product Name	M.F.H.	Count
A	CRF302501-CUSTOM_2046546	Custom Small Spacenet	7'4"	1
B	KSW934-CUSTOM_20389245	Swings: 2 Basic, 1 ADA, 1 Infant	7'11"	1

 EWF AREA: 3693 SF

PERIMETER: 250'-5"

**STANLEY PARK**  
**Option 1**  
 10785 Elizabeth Lake Rd  
 White Lake, MI 48386  
 Site Plan - 5-12



MANUFACTURER'S SHOP DRAWING:

FOR USE BY CONTRACTOR, ENGINEER, OR DESIGN PROFESSIONAL OF RECORD. SEE SIGNED SALES PROPOSAL FOR COMPLETE SCOPE TO BE PROVIDED BY KOMPAN OR REPRESENTING AGENCY. CONFIRM FINAL PLAN AND SCOPE WITH KOMPAN SALES REP OR PROJECT MANAGER PRIOR TO USE FOR REVIEW, PERMITTING, OR CONSTRUCTION.

TO BE READ CONTINGENTLY WITH KOMPAN'S STANDARDS FOR SITE PREPARATION, MATERIALS AND INSTALLATION PROCESSES, PROVIDED AFTER EQUIPMENT PURCHASE. A COMPLIANT PLAYGROUND TO KOMPAN'S STANDARDS MUST SATISFY ALL REQUIREMENTS IN THE CODE OF CONDUCT.

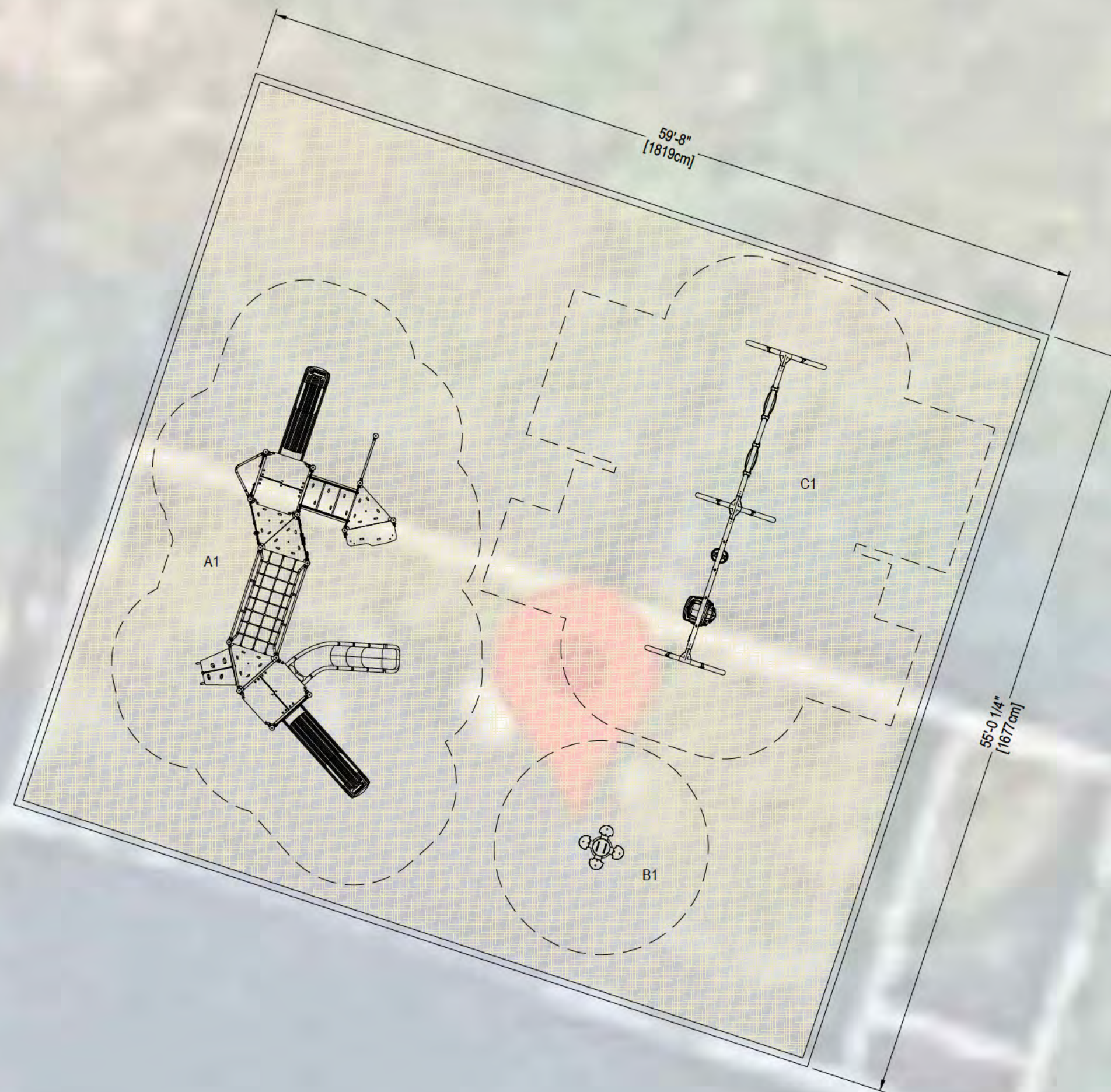
SLABS BY OTHERS UNLESS OTHERWISE NOTED, FOR SURFACE MOUNT OPTIONS, THE CONCRETE REQUIREMENTS MAY BE UP TO 5/8\"/>

DIMENSIONS OF PLAY AREA, SIZE AND ORIENTATION, LOCATIONS OF ALL EXISTING UTILITIES, EQUIPMENT AND SITE FURNISHINGS TO BE FIELD-VERIFIED PRIOR TO CONSTRUCTION.

PREPARED AND PRINTED IN USA BY KOMPAN © 2026 KOMPAN, INC. AUSTIN, TX, USA 800-426-9788

SALES REPRESENTATIVE			SHEET	
Ashley Palushaj			K1.0-1	
REVIEW BY	DRAWN BY	DATE	REVISION NOTES	
DESIGN	MeiEwa	03/26/26	-	
REV. NO.	REV. BY	REV. DATE	-	

LAYOUT IS IN ACCORDANCE WITH ASTM F1487



ADA ACCESSIBLE PATH TO SITE IS  
REQUIRED, PER 2010 ADA STANDARDS  
(SECTION 206)

MAINTENANCE OF ASTM F1951 COMPLIANT  
LOOSE FILL SURFACING IS THE  
RESPONSIBILITY OF THE SITE OWNER TO  
ENSURE ADA REQUIREMENTS FOR PATH OF  
TRAVEL.

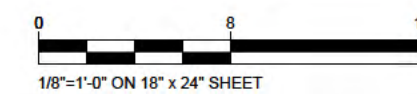
#	Product Number	Product Name	M.F.H.	Count
A	PCE21934-CUSTOM_20343842	Lhotse with Roof	4'10"	1
B	M12871-xoP	Daisy	2'0"	1
C	KSW924-CUSTOM_20401839	Swings: 2 Basic, 1 Infant, 1 ADA	7'11"	1

EWF AREA: 3170 SF

PERIMETER: 229'-5"

## STANLEY PARK Option 2

10785 Elizabeth Lake Rd  
White Lake, MI 48386  
Site Plan - 2-5 & 5-12



# KOMPAN!

MANUFACTURER'S SHOP DRAWING:

FOR USE BY CONTRACTOR, ENGINEER, OR DESIGN PROFESSIONAL OF RECORD. SEE SIGNED SALES PROPOSAL FOR COMPLETE SCOPE TO BE PROVIDED BY KOMPAN OR REPRESENTING AGENCY. CONFIRM FINAL PLAN AND SCOPE WITH KOMPAN SALES REP OR PROJECT MANAGER PRIOR TO USE FOR REVIEW, PERMITTING, OR CONSTRUCTION.

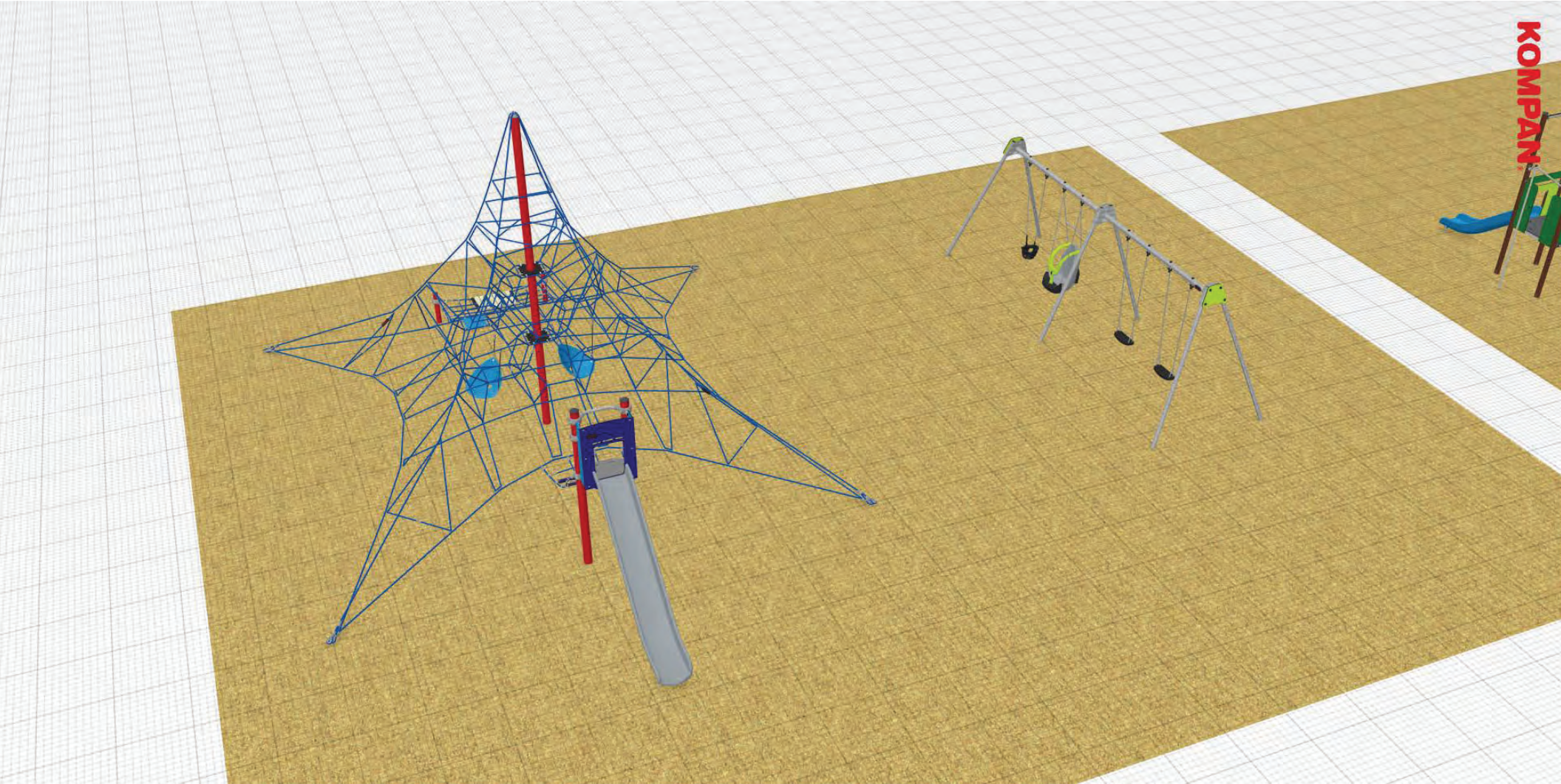
TO BE READ CONTINGENTLY WITH KOMPAN'S STANDARDS FOR SITE PREPARATION, MATERIALS AND INSTALLATION PROCESSES, PROVIDED AFTER EQUIPMENT PURCHASE A COMPLIANT PLAYGROUND TO KOMPAN'S STANDARDS MUST SATISFY ALL REQUIREMENTS IN THE CODE OF CONDUCT.

SLAB BY OTHERS UNLESS OTHERWISE NOTED. FOR SURFACE MOUNT OPTIONS, THE CONCRETE REQUIREMENTS MAY BE UP TO 5/8" OF 3,500 PSI MINIMUM COMPRESSIVE STRENGTH. CONTACT KOMPAN FOR SPECIFIC PRODUCT REQUIREMENTS. ALL COMPOSITE STRUCTURES SHOWN REQUIRE A SITE GRADE OF 2% MAXIMUM, 1% OPTIMAL. SPECIFICATIONS FOR EACH KOMPAN STRUCTURE MAY BE FOUND AT KOMPAN.COM/KOMPANMASTER.

DIMENSIONS OF PLAY AREA, SIZE AND ORIENTATION, LOCATIONS OF ALL EXISTING UTILITIES, EQUIPMENT AND SITE FURNISHINGS TO BE FIELD VERIFIED PRIOR TO CONSTRUCTION.  
PREPARED AND PRINTED IN USA BY KOMPAN © 2026 KOMPAN, INC. AUSTIN, TX, USA 800-426-9788

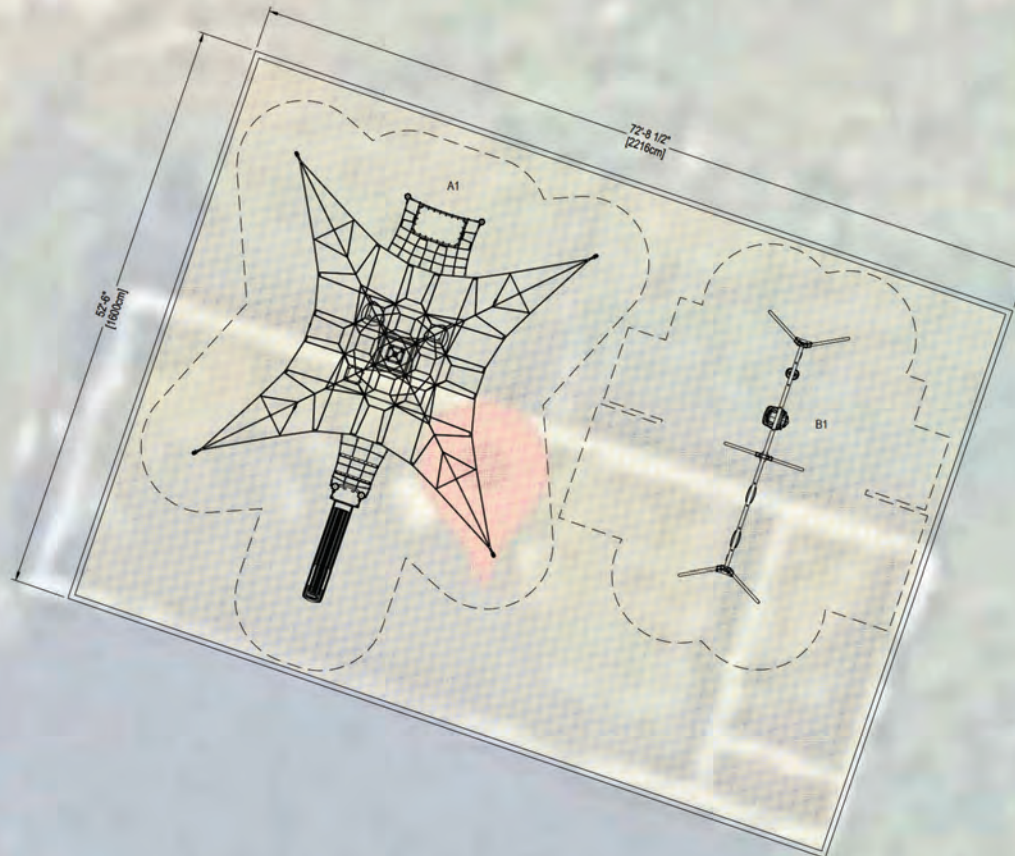
SALES REPRESENTATIVE			SHEET	
Ashley Palushaj			K1.0-2	
REVIEW BY	DRAWN BY	DATE		
DESIGN	MeiEwa	03/26/26		
REV. NO.	REV. BY	REV. DATE	REVISION NOTES	
-	-	-		

LAYOUT IS IN ACCORDANCE WITH ASTM F1487



KOMPAN





ADA ACCESSIBLE PATH TO SITE IS  
REQUIRED, PER 2010 ADA STANDARDS  
(SECTION 206)

MAINTENANCE OF ASTM F1951 COMPLIANT  
LOOSE FILL SURFACING IS THE  
RESPONSIBILITY OF THE SITE OWNER TO  
ENSURE ADA REQUIREMENTS FOR PATH OF  
TRAVEL.

#	Product Number	Product Name	M.F.H.	Count
A	KOMPAN-CUSTOM_2485246	Custom Small Spacenet	7'6"	1
B	KOMPAN-CUSTOM_2638545	Swings 2 Bases, 1 ADA, 1 Infant	7'11"	1

EWf AREA: 3693 SF

PERIMETER: 250'-5"

**STANLEY PARK**  
**Option 1**  
10785 Elizabeth Lake Rd  
White Lake, MI 48386  
Site Plan - 5-12



**KOMPAN!**

MANUFACTURER'S SHOP DRAWING.

FOR USE BY CONTRACTOR, ENGINEER, OR DESIGN PROFESSIONAL. OF RECORD. SEE SWING SALES  
REQUIREMENTS FOR COMPLETE SCOPE TO BE PROVIDED BY PROVIDER OR MANUFACTURER. SEE  
CONSTRUCTION PLAN AND SCOPE FOR FURTHER DETAILS. SEE SWING SALES FOR COMPLETE SCOPE TO USE  
FOR REVIEW, PERMITTING, OR CONSTRUCTION.

TO BE READ CONJUNCTIVELY WITH COMPANY STANDARDS FOR SITE PREPARATION, MATERIALS, AND  
INSTALLATION PROCESSES, PROVIDED AFTER EQUIPMENT PURCHASE. A COMPLIANT PLAYGROUND  
OR KIDSPACE STANDARDS MUST SATISFY ALL REQUIREMENTS BY THE DATE OF COMPLETION.

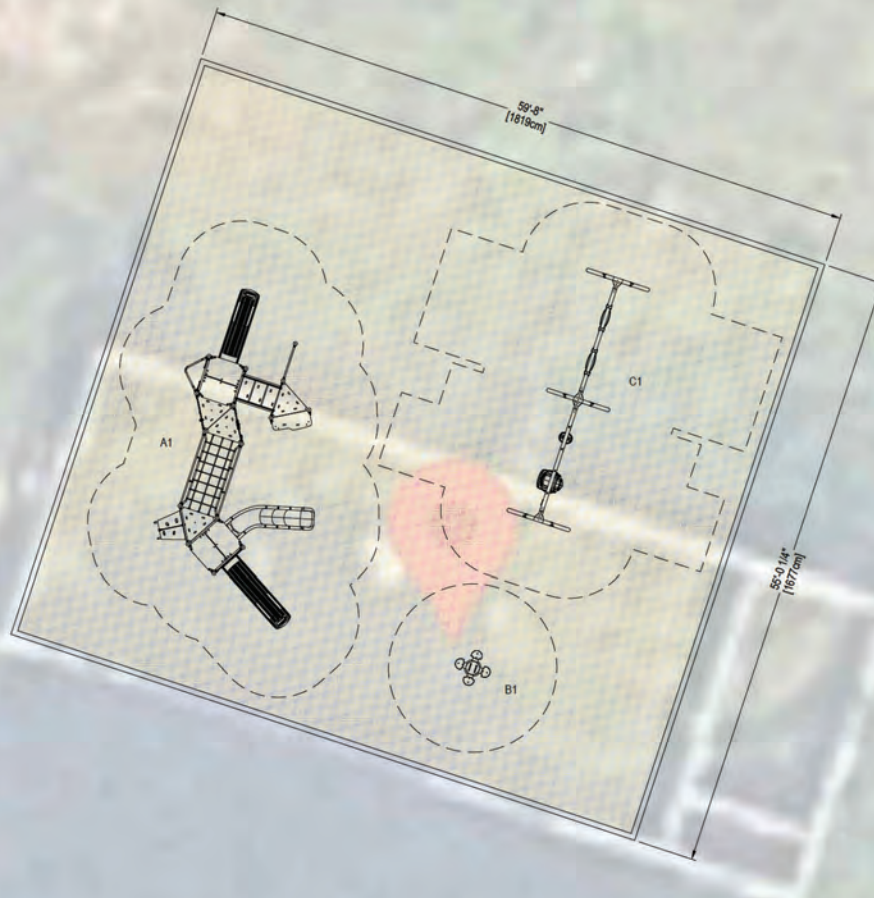
SLAB BY OTHERS (SEE DIMENSIONS NOTES FOR SURFACE HEIGHT OPTIONS). THE CONCRETE  
REQUIREMENTS MAY BE UP TO 10% OF TOTAL PLAYGROUND COMPOSITE SURFACE CONTACT  
COMMON FOR SPECIAL PRODUCT REQUIREMENTS. ALL CONCRETE STRUCTURES SHOWN REQUIRE  
A 10% GRADE OF 2% INCREASE IN CONTACT. SPECIFICATIONS FOR EACH KOMPAN STRUCTURE MAY  
BE FOUND IN KOMPAN.CATALOGUE/PRODUCTS.

DIMENSIONS OF PLAY AREA, SIZE AND ORIENTATION, LOCATIONS OF ALL EXISTING UTILITIES,  
EQUIPMENT AND SITE FURNISHINGS TO BE FIELD-VERIFIED PRIOR TO CONSTRUCTION.

PREPARED AND PRINTED IN USA BY KOMPAN © 2024 KOMPAN, INC. AUSTIN, TX, USA 800-458-9788

SALES REPRESENTATIVE			SHEET	
Ashley Palumbo			K1.0-1	
REVIEW BY	DATE	DATE	REV BY	REVISION NOTES
	03/26/25			

LAYOUT IS IN ACCORDANCE WITH ASTM F2287



ADA ACCESSIBLE PATH TO SITE IS REQUIRED, PER 2010 ADA STANDARDS (SECTION 206)

MAINTENANCE OF ASTM F1951 COMPLIANT LOOSE FILL SURFACING IS THE RESPONSIBILITY OF THE SITE OWNER TO ENSURE ADA REQUIREMENTS FOR PATH OF TRAVEL.

#	Product Number	Product Name	MFJK	Count
A	PC62754-CUSTOM_250X342	Slide with Roof	4197	1
B	M2371-up	Slide	297	1
C	K36904-CUSTOM_240X120	Swings: 2 Basic, 1 Infant, 1 ADA	7117	1

EWf AREA: 3170 SF  
PERIMETER: 229'-5"

**STANLEY PARK**  
**Option 2**  
10785 Elizabeth Lake Rd  
White Lake, MI 48386  
Site Plan - 2-5 & 5-12



**KOMPAN!**

MANUFACTURER'S SHOP DRAWING

NOT TO BE USED BY CONTRACTOR, ENGINEER, OR DESIGN PROFESSIONAL, OR RECORD SET WITHOUT THE SIGNATURE OF THE MANUFACTURER. THIS DRAWING IS THE PROPERTY OF KOMPAN! AND IS NOT TO BE REPRODUCED, COPIED, OR TRANSMITTED IN ANY FORM OR BY ANY MEANS, WITHOUT THE WRITTEN PERMISSION OF KOMPAN!.

TO BE READ CONJUNCTIVELY WITH COMPANY'S STANDARD PLAY SITE PREPARATION, INSTALLATION, AND INSPECTION PROCEDURES, PROVIDED AFTER EQUIPMENT PURCHASE. A COMPLIANT PLAYGROUND OR KIDSPACE STANDARD MUST SATISFY ALL REQUIREMENTS BY THE DATE OF COMPLETION.

SLAB BY OTHERS (SEE DRAWING NOTES FOR SURFACE HEIGHT OPTIONS). THE CONCRETE REQUIREMENTS MAY BE UP TO 10% OF 100 PSI PERMANENTLY COMPRESSED STRENGTH CONCRETE. KOMPAN! PROVIDES PRODUCT REQUIREMENTS. ALL CONCRETE STRUCTURES SHOWN REQUIRE A 10% SLAB OF 28,000 PSI COMPRESSIVE STRENGTH. SPECIFICATIONS FOR EACH KOMPAN! STRUCTURE MAY BE FOUND IN [www.kompan.com/usa](http://www.kompan.com/usa).

DIMENSIONS OF PLAY AREA, SIZE AND ORIENTATION, LOCATIONS OF ALL EXISTING UTILITIES, EQUIPMENT AND SITE FURNISHINGS TO BE FIELD VERIFIED PRIOR TO CONSTRUCTION.

PREPARED AND PRINTED IN USA BY KOMPAN! © 2024 KOMPAN! INC. AUSTIN, TX, USA 800-458-9788

SALES REPRESENTATIVE			SHEET	
Ashley Palusha			K1.0-2	
REVIEW BY	DESIGN BY	DATE	REV BY	REVISION NUMBER
-	-	03/26/25	-	-

SCALE: AS SHOWN

## Sales Proposal

White Lake Township  
David Waligora  
7525 Highland Rd  
White Lake, MI 48383



Quote No. SP166553-2  
Customer No. 83782  
Document Date 03/31/2026  
Expiration Date 05/30/2026

Sales Representative  
Email



Customer Ref. Option 1

Project Name US346774 Stanley Park

No.	Description	Qty Unit	Unit Price	Discount %	Net Price
<b><u>Equipment-Option 1</u></b>					
<a href="#"><u>CRP302501-CUSTOM</u></a>	Custom Small Spacenet 20466546	1 Pieces	47,570.00	15.00	40,434.50
					
<a href="#"><u>KSW934-CUSTOM</u></a>	Custom - Swing Frame , 4 Seat, 8 ft H, Steel 20389245	1 Pieces	7,220.00	15.00	6,137.00
					
FREIGHT	Freight	1 Pieces	4,988.08		4,988.08
INSTALL SPECIAL	Installation of KOMPAN Equipment <b><u>EWFF/FE</u></b>	1 Pieces	19,878.57		19,878.57
US-CUSTOM-SURFACING	Supply and Install of 3693 SF of EWF at 12" compacted (183 CY)	183 Cubic Yard	53.85		9,854.55
US-CUSTOM-SUBBASE	3693 SF of Filter Fabric	3,693 Sq. Feet	0.62		2,289.66



### Sales Proposal

White Lake Township  
David Waligora  
7525 Highland Rd  
White Lake, MI 48383

Quote No. SP166553-2  
Customer No. 83782  
Document Date 03/31/2026  
Expiration Date 05/30/2026



Customer Ref. Option 1

Project Name US346774 Stanley Park

No.	Description	Qty	Unit	Unit Price	Discount %	Net Price
-----	-------------	-----	------	------------	------------	-----------

**Notes**

Please read attached General Assumptions and Exclusion document for information on Install/Sitework.

Excludes sitework, products, & services not listed.

Assumes site to be accessible & install ready.

Please allow 11-13 weeks for product delivery upon order placement.

Equipment is as per "Stanley Park Op 1" Site Plan version "K1.0-1" - dated 3/26/26

Description	Qty	Retail Price	Discount	Net Price
No. of Products	2			
Subtotal - Products		54,790.00	8,218.50	46,571.50
Subtotal - Surfacing		12,144.21		12,144.21
Subtotal - Installation		19,878.57		19,878.57
Subtotal - Freight		4,988.08		4,988.08
<b>Total USD</b>				<b>83,582.36</b>

Payment Terms 50% Prepayment , 50% Net 30 days

**Installation Site Address**

Stanley Park  
10785 Elizabeth Lake Rd  
White Lake, MI 48386



### Sales Proposal

White Lake Township  
David Waligora  
7525 Highland Rd  
White Lake, MI 48383

Quote No. SP166553-2  
Customer No. 83782  
Document Date 03/31/2026  
Expiration Date 05/30/2026



Customer Ref. Option 1

Project Name US346774 Stanley Park

Note that the color and texture of products and surfacing made with recycled content are subjected by the differences from the used recycled raw materials. Therefore, minor differences in the appearance and texture can occur.  
Applicable sales tax will be added unless a valid tax exemption certificate is provided. This amount is only an estimate of your tax liability. Your acceptance of this proposal constitutes a valid order request and includes acceptance of terms and conditions contained within this Master Agreement, which is hereby acknowledged.  
Acceptance of this proposal from KOMPAN is acknowledged by issuance of an order confirmation by an authorized KOMPAN representative. Prices in this quotation are good until expiration date, shown in the top of this document. After that date, this proposal may be withdrawn. Prevailing Wage and Payment & Performance Bonds are not included unless stated in body of Sales Proposal. If Payment & Performance Bonds are needed, add 2.2% of the entire sales proposal.

This information required for order placement:

Accepted By (Please Print): \_\_\_\_\_

Accepted By (Title): \_\_\_\_\_

Accepted By (signature): \_\_\_\_\_

Date: \_\_\_\_\_

Date Equipment needed on site: \_\_\_\_\_

Bill To: \_\_\_\_\_

Ship To: \_\_\_\_\_

Address: \_\_\_\_\_

Address: \_\_\_\_\_

City, State, Zip: \_\_\_\_\_

City, State, Zip: \_\_\_\_\_

Contact: \_\_\_\_\_

Contact: \_\_\_\_\_

Contact Email: \_\_\_\_\_

Contact Email: \_\_\_\_\_

Contact Phone (Office): \_\_\_\_\_

Contact Phone (Office): \_\_\_\_\_

Contact Phone (Cell): \_\_\_\_\_

SALES TAX EXEMPTION CERTIFICATE #: \_\_\_\_\_

(PLEASE PROVIDE A COPY OF CERTIFICATE)

## Sales Proposal




White Lake Township  
 David Waligora  
 7525 Highland Rd  
 White Lake, MI 48383

Quote No. SP166555-1  
 Customer No. 83782  
 Document Date 03/31/2026  
 Expiration Date 05/30/2026



Customer Ref. Option 2

Project Name US346774 Stanley Park

No.	Description	Qty Unit	Unit Price	Discount %	Net Price
<b><u>Equipment-Option 2</u></b>					
<a href="#"><u>PCE211934-CUSTOM</u></a>	Lhotse w/ Roof 20343842 	1 Pieces	39,314.00	15.00	33,416.90
<a href="#"><u>M12871-01P</u></a>	Daisy - Greenline In-ground 40cm Total CO <sub>2</sub> Emission 432.9 LB (432.9 LB/Pieces) 	1 Pieces	1,450.00	15.00	1,232.50
<a href="#"><u>KSW924-CUSTOM</u></a>	CUSTOM - Swing Frame, 4 Seat, 8 ft H In-ground 90cm 20401839 	1 Pieces	8,200.00	15.00	6,970.00
FREIGHT	Freight	1 Pieces	2,715.51		2,715.51
INSTALL SPECIAL	Installation of KOMPAN Equipment <b><u>EWFF/FE</u></b>	1 Pieces	21,944.64		21,944.64
US-CUSTOM-SURFACING	Supply and Install of 3170 SF of EWF at 12" compacted (183 CY)	156 Cubic Yard	53.85		8,400.60



### Sales Proposal

White Lake Township  
David Waligora  
7525 Highland Rd  
White Lake, MI 48383

Quote No. SP166555-1  
Customer No. 83782  
Document Date 03/31/2026  
Expiration Date 05/30/2026



Customer Ref. Option 2

Project Name US346774 Stanley Park

No.	Description	Qty Unit	Unit Price	Discount %	Net Price
-----	-------------	----------	------------	------------	-----------

US-CUSTOM-SUBBASE	3170 SF of Filter Fabric	3,170 Sq. Feet	0.62		1,965.40
-------------------	--------------------------	----------------	------	--	----------

**Notes**

Please read attached General Assumptions and Exclusion document for information on Install/Sitework.

Excludes sitework, products, & services not listed.

Assumes site to be accessible & install ready.

Please allow 11-13 weeks for product delivery upon order placement.

Equipment is as per "Stanley Park Op 2" Site Plan version "K1.0-2" - dated 3/26/26

Description	Qty	Retail Price	Discount	Net Price
No. of Products	3			
Subtotal - Products		48,964.00	7,344.60	41,619.40
Subtotal - Surfacing		10,366.00		10,366.00
Subtotal - Installation		21,944.64		21,944.64
Subtotal - Freight		2,715.51		2,715.51
<b>Total USD</b>				<b>76,645.55</b>

**Payment Terms** 50% Prepayment , 50% Net 30 days

**Installation Site Address**

Stanley Park  
10785 Elizabeth Lake Rd  
White Lake, MI 48386



### Sales Proposal

White Lake Township  
David Waligora  
7525 Highland Rd  
White Lake, MI 48383

Quote No. SP166555-1  
Customer No. 83782  
Document Date 03/31/2026  
Expiration Date 05/30/2026



Customer Ref. Option 2

Project Name US346774 Stanley Park

Note that the color and texture of products and surfacing made with recycled content are subjected by the differences from the used recycled raw materials. Therefore, minor differences in the appearance and texture can occur.  
Applicable sales tax will be added unless a valid tax exemption certificate is provided. This amount is only an estimate of your tax liability. Your acceptance of this proposal constitutes a valid order request and includes acceptance of terms and conditions contained within this Master Agreement, which is hereby acknowledged.  
Acceptance of this proposal from KOMPAN is acknowledged by issuance of an order confirmation by an authorized KOMPAN representative. Prices in this quotation are good until expiration date, shown in the top of this document. After that date, this proposal may be withdrawn. Prevailing Wage and Payment & Performance Bonds are not included unless stated in body of Sales Proposal. If Payment & Performance Bonds are needed, add 2.2% of the entire sales proposal.

This information required for order placement:

Accepted By (Please Print): \_\_\_\_\_

Accepted By (Title): \_\_\_\_\_

Accepted By (signature): \_\_\_\_\_

Date: \_\_\_\_\_

Date Equipment needed on site: \_\_\_\_\_

Bill To: \_\_\_\_\_

Ship To: \_\_\_\_\_

Address: \_\_\_\_\_

Address: \_\_\_\_\_

City, State, Zip: \_\_\_\_\_

City, State, Zip: \_\_\_\_\_

Contact: \_\_\_\_\_

Contact: \_\_\_\_\_

Contact Email: \_\_\_\_\_

Contact Email: \_\_\_\_\_

Contact Phone (Office): \_\_\_\_\_

Contact Phone (Office): \_\_\_\_\_

Contact Phone (Cell): \_\_\_\_\_

SALES TAX EXEMPTION CERTIFICATE #: \_\_\_\_\_

(PLEASE PROVIDE A COPY OF CERTIFICATE)

Intellectual Property of GameTime, a PlayCore Company. The site shown in rendering is an interpretation and may not reflect exact site conditions.



Rendered in Custom Evening Elegance Palette

### White Lake Township Stanley Park



Intellectual property of GameTime, a PlayCore Company. The site shown in rendering is an interpretation and may not reflect exact site conditions.



Rendered in Custom Evening Elegance Palette

### White Lake Township Stanley Park



Intellectual property of GameTime, a PlayCore Company. The site shown in rendering is an interpretation and may not reflect exact site conditions.

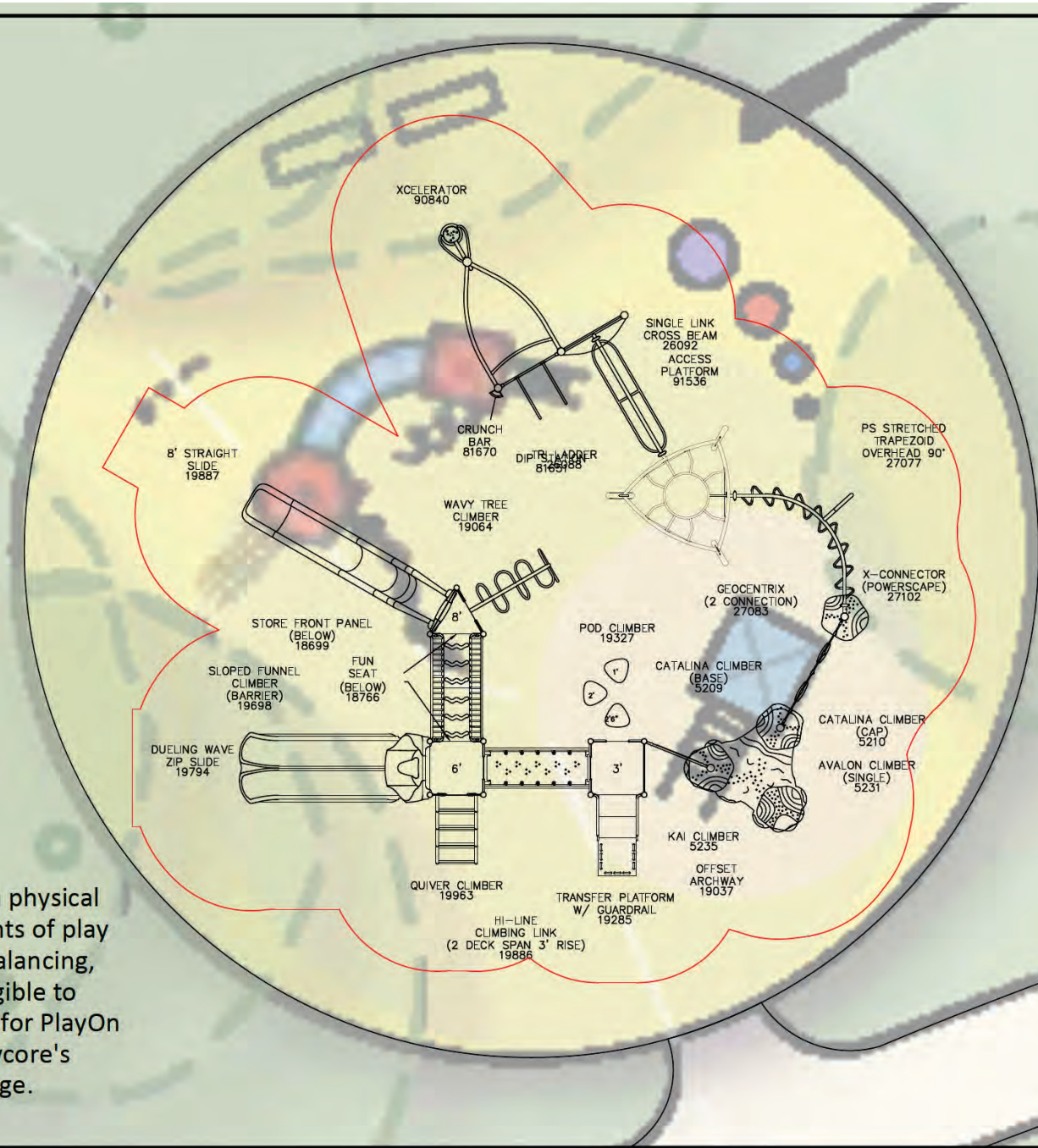


Rendered in Custom Evening Elegance Palette

White Lake Township  
Stanley Park



The proposed design encourages youth physical fitness through the six essential elements of play (swinging, spinning, sliding, climbing, balancing, and brachiating). Playground site is eligible to become a National Demonstration Site for PlayOn - designed following research from Playcore's Scholar Network - at no additional charge.



<small>150 PlayCore Drive SE Fort Payne, AL 35967 www.playcore.com</small>	
<small>IMPORTANT: Soft resilient surfacing should be placed in the use zones of all equipment, and as specified for each type of equipment, and as designed to meet the critical fall heights as required by the U.S. Consumer Product Safety Commission, ASTM standard F 1487 and Canadian Standard CAN/CSA-Z-614</small>	
<small>Minimum Area Required:</small>	<small>This play equipment is recommended for children ages 5-12</small>
<small>PROJECT TITLE:</small> White Lake Township Stanley Park White Lake, MI	<small>DRAWING NO.:</small> White Lake Twp - Stanley Park
<small>SHEET NO.:</small> 109097-01-01	<small>DATE:</small> 2/24/2026
<small>REPRESENTATIVE:</small> Sinclair Recreation	<small>DRAWN BY:</small> ALW

# QUOTE

109097-01-01 • 02/24/2026



## Stanley Park - Statewide Initiative

**Customer:**

WHITE LAKE TOWNSHIP  
7525 HIGHLAND RD  
WHITE LAKE, MI 48383-2938  
United States

**Prepared for:**

Accounts Payable  
[Redacted]

**Prepared by:**

Playcore Wisconsin Inc, dba GameTime  
[Redacted]

**Ship to Zip: 48383-2938**

Quantity	Part #	Description	Unit Price	Amount
1	14927	GameTime - NDS Play On Sign Package		
1	RDU	<b>GameTime - PrimeTime Unit for 5-12 Year Olds</b> <ul style="list-style-type: none"> <li>(1) 5209 – Catalina Climber Base</li> <li>(1) 5210 – Catalina Climber Cap</li> <li>(1) 5231 – Avalon Climber Single 1'Pedestal FS</li> <li>(1) 5235 – Kai Climber to PT 2' Pedestal</li> <li>(3) 12024 – 3 1/2" Uprt Ass'Y Alum 9'</li> <li>(1) 12026 – 3 1/2" Uprt Ass'Y Alum 11'</li> <li>(4) 12027 – 3 1/2" Uprt Ass'Y Alum 12'</li> <li>(2) 18200 – 36" Sq Punched Deck P/T 1.3125</li> <li>(1) 18201 – 36" Tri Punched Deck P/T</li> <li>(1) 18699 – Store Front Panel 36"</li> <li>(1) 18766 – Fun Seat 36"</li> <li>(1) 19037 – Offset Archway</li> <li>(1) 19064 – Wavy Tree (7'-6" &amp; 8')</li> <li>(1) 19285 – Transfer Platform W/ Guardrail 3'</li> <li>(1) 19327 – Pod Climber</li> <li>(1) 19698 – Sloped Funnel Climber Barrier (Dbl)</li> <li>(1) 19794 – Dueling Wave Zip 6'-0"</li> <li>(1) 19886 – Hi Line Climb Link 2 Deck 3' Rise</li> <li>(1) 19887 – 8' Straight Slide</li> <li>(1) 19963 – 6' Quiver Climber</li> <li>(1) 26088 – Tri Ladder</li> <li>(1) 26092 – Ps Plus Single Link Cross Beam</li> <li>(4) 26094 – Triangular Shroud</li> <li>(1) 27077 – Stretched Trapezoid Overhead - 90 degr</li> <li>(1) 27083 – Geocentrix 2 Connection</li> <li>(1) 27102 – X Connector (Powerscape)</li> <li>(1) 81651 – Dip Station</li> <li>(1) 81670 – Crunch Bar</li> <li>(1) 90267 – 9' Upright, Alum</li> <li>(1) 90268 – 10' Upright, Alum</li> <li>(1) 90840 – Xcelerator</li> <li>(1) 91536 – Access Platform</li> <li>(3) G12069 – 3 1/2"Uprt Ass'Y Galv 14'</li> <li>(1) G90266 – 8' Upright, Galv</li> <li>(1) G90268 – 10' Upright, Galv</li> <li>(2) G90269 – 11' Upright, Galv</li> </ul>	\$80,494.96	\$80,494.96

# QUOTE

109097-01-01 • 02/24/2026



2535	EWF	GT-Impax - 12" Compacted depth engineered wood fiber surfacing, blown in	\$2.65	\$6,717.75
1	INSTALL	Installation - Installation of GameTime equipment into area Does not include: <ul style="list-style-type: none"><li>• Unloading or storage of equipment</li><li>• Site preparation or excavation</li><li>• Curbing or containment</li><li>• Concrete flatwork</li><li>• Drainage</li><li>• Site restoration or landscaping</li></ul>	\$26,225.00	\$26,225.00

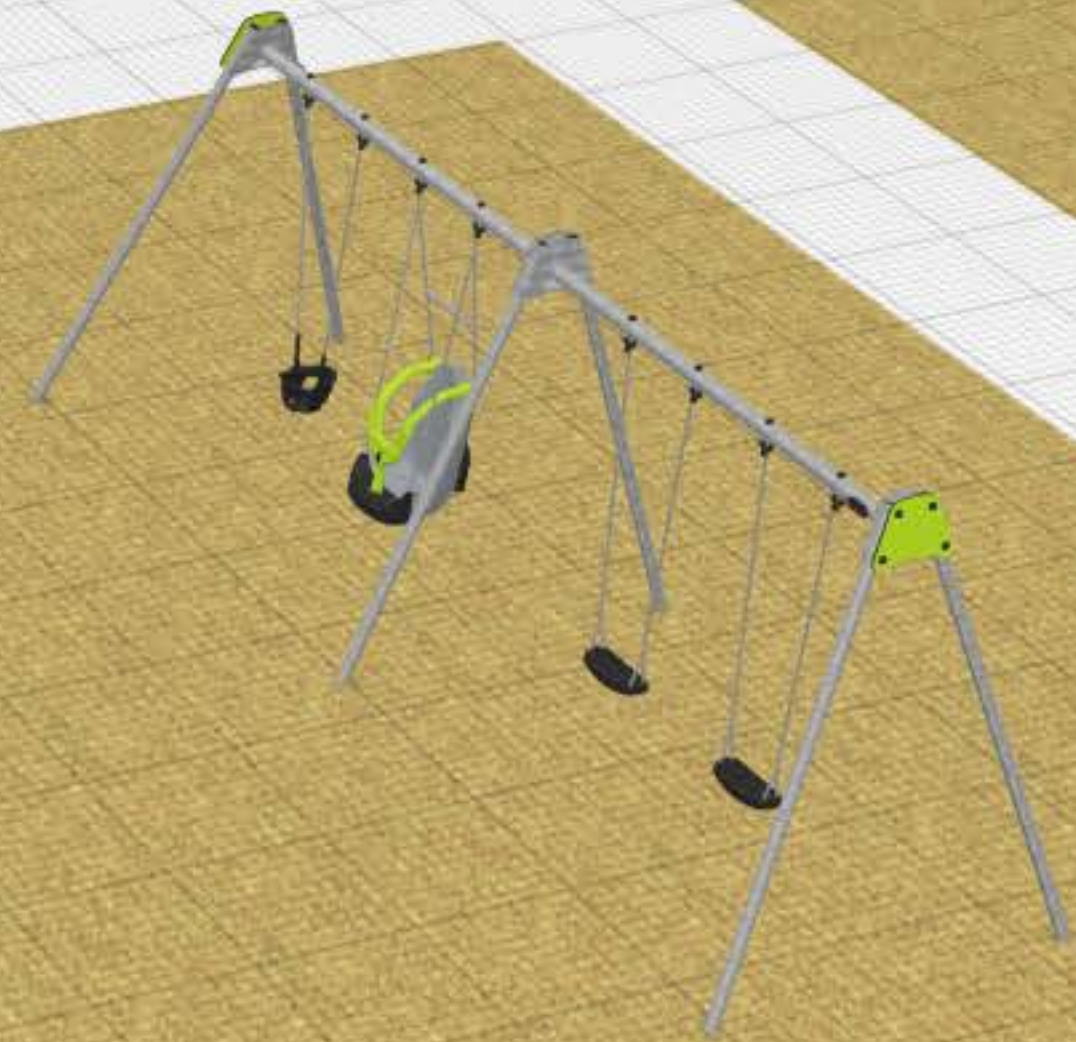
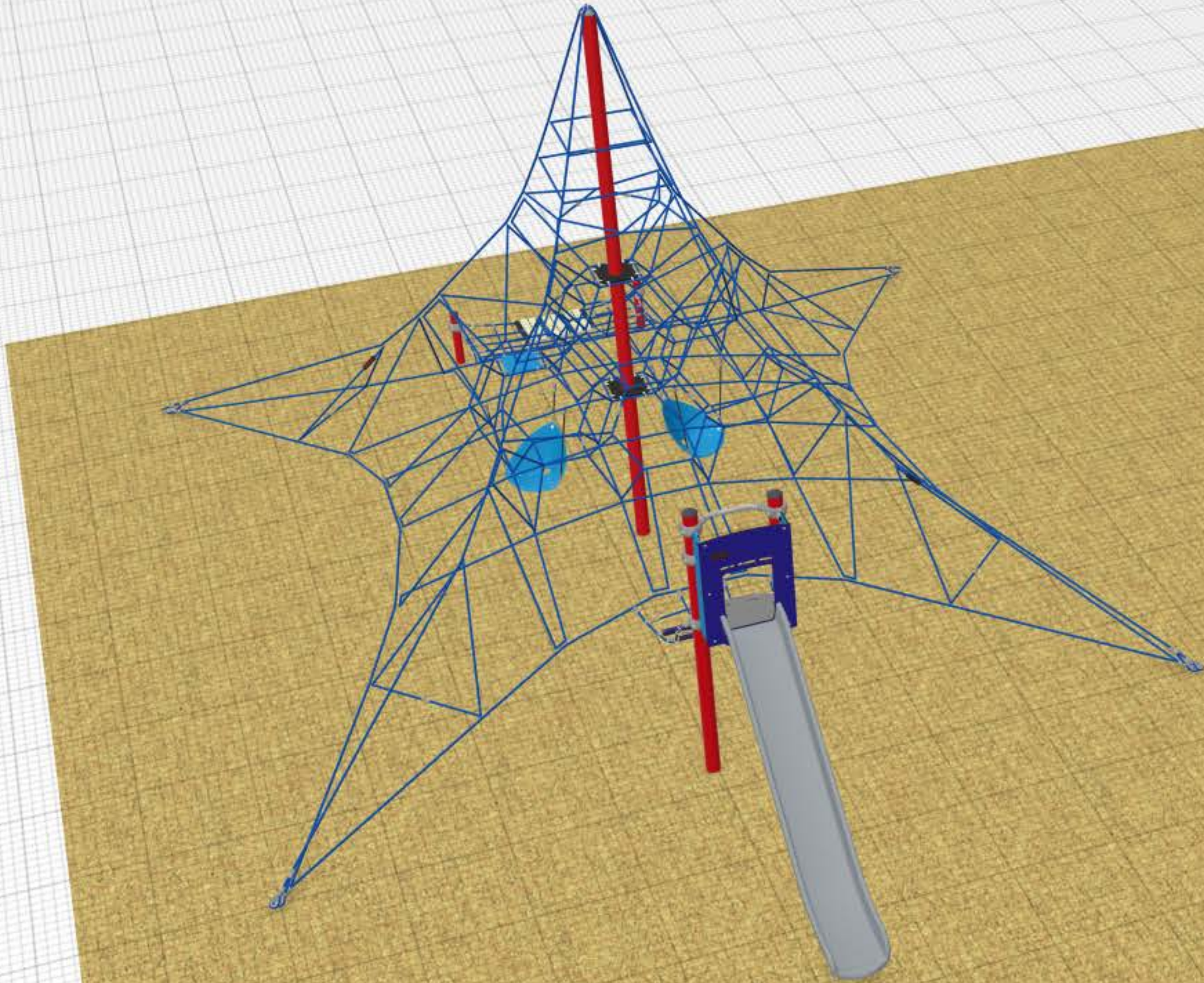
Contract: OMNIA #2017001134

Sub Total	\$113,437.71
Statewide Initiative Funding Applied	(\$40,247.48)
Estimated Freight	\$1,800.00
<b>Grand Total</b>	<b>\$74,990.23</b>

## Comments

Funding assistance provided by GameTime must be used towards the purchase of a qualified playground structure. Other freestanding play products are available at our best pricing through Omnia Partners. Representatives from mParks, GameTime, and PlayCore will select qualifying projects to be considered for funding assistance. Funding can only be applied to additional GameTime playground equipment purchases and only in conjunction with the original purchase. GameTime standard policies and warranties as listed in the 2026 Catalog apply. Freight, installation, surfacing, material surcharges, and applicable sales tax are extra and not included as part of the funding program. To qualify for a 100% matching funds assistance, this project must be purchased with a check/cash with order of \$42,047.48

This quotation is subject to policies in the current GameTime Playground Catalog and the following terms and conditions. Our quotation is based on shipment of all items at one time to a single destination, unless noted, and changes are subject to price adjustment. Purchases to be supported by your written purchase order made out to GAMETIME C/O SINCLAIR RECREATION. **A 2.5% PROCESSING FEE WILL BE ADDED TO ALL ORDERS PAID VIA CREDIT CARD.**



KOMPAN



## Sales Proposal

Quote No. SP166553-2  
 Customer No. 83782  
 Document Date 03/31/2026  
 Expiration Date 05/30/2026



White Lake Township  
 David Waligora  
 7525 Highland Rd  
 White Lake, MI 48383

Sales Representative  
 Email



Customer Ref. Option 1

Project Name US346774 Stanley Park

No.	Description	Qty Unit	Unit Price	Discount %	Net Price
<b><u>Equipment-Option 1</u></b>					
<a href="#">CRP302501-CUSTOM</a>	Custom Small Spacenet 20466546	1 Pieces	47,570.00	15.00	40,434.50
					
<a href="#">KSW934-CUSTOM</a>	Custom - Swing Frame , 4 Seat, 8 ft H, Steel 20389245	1 Pieces	7,220.00	15.00	6,137.00
					
FREIGHT	Freight	1 Pieces	4,988.08		4,988.08
INSTALL SPECIAL	Installation of KOMPAN Equipment <b>EW/EE</b>	1 Pieces	19,878.57		19,878.57
US-CUSTOM-SURFACING	Supply and Install of 3693 SF of EWF at 12" compacted (183 CY)	183 Cubic Yard	53.85		9,854.55
US-CUSTOM-SUBBASE	3693 SF of Filter Fabric	3,693 Sq. Feet	0.62		2,289.66



## Sales Proposal

White Lake Township  
 David Waligora  
 7525 Highland Rd  
 White Lake, MI 48383

Quote No. SP166553-2  
 Customer No. 83782  
 Document Date 03/31/2026  
 Expiration Date 05/30/2026



Customer Ref. Option 1

Project Name US346774 Stanley Park

No.	Description	Qty	Unit	Unit Price	Discount %	Net Price
-----	-------------	-----	------	------------	------------	-----------

**Notes**

Please read attached General Assumptions and Exclusion document for information on Install/Sitework.

Excludes sitework, products, & services not listed.

Assumes site to be accessible & install ready.

Please allow 11-13 weeks for product delivery upon order placement.

Equipment is as per "Stanley Park Op 1" Site Plan version "K1.0-1" - dated 3/26/26

Description	Qty	Retail Price	Discount	Net Price
No. of Products	2			
Subtotal - Products		54,790.00	8,218.50	46,571.50
Subtotal - Surfacing		12,144.21		12,144.21
Subtotal - Installation		19,878.57		19,878.57
Subtotal - Freight		4,988.08		4,988.08
<b>Total USD</b>				<b>83,582.36</b>

**Payment Terms** 50% Prepayment , 50% Net 30 days

**Installation Site Address**

Stanley Park  
 10785 Elizabeth Lake Rd  
 White Lake, MI 48386



### Sales Proposal

White Lake Township  
David Waligora  
7525 Highland Rd  
White Lake, MI 48383

Quote No. SP166553-2  
Customer No. 83782  
Document Date 03/31/2026  
Expiration Date 05/30/2026



Customer Ref. Option 1

Project Name US346774 Stanley Park

Note that the color and texture of products and surfacing made with recycled content are subjected by the differences from the used recycled raw materials. Therefore, minor differences in the appearance and texture can occur.  
Applicable sales tax will be added unless a valid tax exemption certificate is provided. This amount is only an estimate of your tax liability. Your acceptance of this proposal constitutes a valid order request and includes acceptance of terms and conditions contained within this Master Agreement, which is hereby acknowledged.  
Acceptance of this proposal from KOMPAN is acknowledged by issuance of an order confirmation by an authorized KOMPAN representative. Prices in this quotation are good until expiration date, shown in the top of this document. After that date, this proposal may be withdrawn. Prevailing Wage and Payment & Performance Bonds are not included unless stated in body of Sales Proposal. If Payment & Performance Bonds are needed, add 2.2% of the entire sales proposal.

This information required for order placement:

Accepted By (Please Print): \_\_\_\_\_

Accepted By (Title): \_\_\_\_\_

Accepted By (signature): \_\_\_\_\_

Date: \_\_\_\_\_

Date Equipment needed on site: \_\_\_\_\_

Bill To: \_\_\_\_\_

Ship To: \_\_\_\_\_

Address: \_\_\_\_\_

Address: \_\_\_\_\_

City, State, Zip: \_\_\_\_\_

City, State, Zip: \_\_\_\_\_

Contact: \_\_\_\_\_

Contact: \_\_\_\_\_

Contact Email: \_\_\_\_\_

Contact Email: \_\_\_\_\_

Contact Phone (Office): \_\_\_\_\_

Contact Phone (Office): \_\_\_\_\_

Contact Phone (Cell): \_\_\_\_\_

SALES TAX EXEMPTION CERTIFICATE #: \_\_\_\_\_

(PLEASE PROVIDE A COPY OF CERTIFICATE)

## Sales Proposal

White Lake Township  
David Waligora  
7525 Highland Rd  
White Lake, MI 48383

Quote No. SP166555-1  
Customer No. 83782  
Document Date 03/31/2026  
Expiration Date 05/30/2026



Customer Ref. Option 2

Project Name US346774 Stanley Park

No.	Description	Qty Unit	Unit Price	Discount %	Net Price
<b><u>Equipment-Option 2</u></b>					
<a href="#">PCE211934-CUSTOM</a>	Lhotse w/ Roof 20343842 	1 Pieces	39,314.00	15.00	33,416.90
<a href="#">M12871-01P</a>	Daisy - Greenline In-ground 40cm Total CO <sub>2</sub> Emission 432.9 LB (432.9 LB/Pieces) 	1 Pieces	1,450.00	15.00	1,232.50
<a href="#">KSW924-CUSTOM</a>	CUSTOM - Swing Frame, 4 Seat, 8 ft H In-ground 90cm 20401839 	1 Pieces	8,200.00	15.00	6,970.00
FREIGHT	Freight	1 Pieces	2,715.51		2,715.51
INSTALL SPECIAL	Installation of KOMPAN Equipment <b>EWFF/FF</b>	1 Pieces	21,944.64		21,944.64
US-CUSTOM-SURFACING	Supply and Install of 3170 SF of EWF at 12" compacted (183 CY)	156 Cubic Yard	53.85		8,400.60

## Sales Proposal

White Lake Township  
David Waligora  
7525 Highland Rd  
White Lake, MI 48383

Quote No. SP166555-1  
Customer No. 83782  
Document Date 03/31/2026  
Expiration Date 05/30/2026



Customer Ref. Option 2

Project Name US346774 Stanley Park

No.	Description	Qty Unit	Unit Price	Discount %	Net Price
-----	-------------	----------	------------	------------	-----------

US-CUSTOM-SUBBASE	3170 SF of Filter Fabric	3,170 Sq. Feet	0.62		1,965.40
-------------------	--------------------------	----------------	------	--	----------

**Notes**

Please read attached General Assumptions and Exclusion document for information on Install/Sitework.

Excludes sitework, products, & services not listed.

Assumes site to be accessible & install ready.

Please allow 11-13 weeks for product delivery upon order placement.

Equipment is as per "Stanley Park Op 2" Site Plan version "K1.0-2" - dated 3/26/26

Description	Qty	Retail Price	Discount	Net Price
No. of Products	3			
Subtotal - Products		48,964.00	7,344.60	41,619.40
Subtotal - Surfacing		10,366.00		10,366.00
Subtotal - Installation		21,944.64		21,944.64
Subtotal - Freight		2,715.51		2,715.51
<b>Total USD</b>				<b>76,645.55</b>

**Payment Terms** 50% Prepayment , 50% Net 30 days

**Installation Site Address**

Stanley Park  
10785 Elizabeth Lake Rd  
White Lake, MI 48386



### Sales Proposal

White Lake Township  
David Waligora  
7525 Highland Rd  
White Lake, MI 48383

Quote No. SP166555-1  
Customer No. 83782  
Document Date 03/31/2026  
Expiration Date 05/30/2026



Customer Ref. Option 2

Project Name US346774 Stanley Park

Note that the color and texture of products and surfacing made with recycled content are subjected by the differences from the used recycled raw materials. Therefore, minor differences in the appearance and texture can occur.  
Applicable sales tax will be added unless a valid tax exemption certificate is provided. This amount is only an estimate of your tax liability. Your acceptance of this proposal constitutes a valid order request and includes acceptance of terms and conditions contained within this Master Agreement, which is hereby acknowledged.  
Acceptance of this proposal from KOMPAN is acknowledged by issuance of an order confirmation by an authorized KOMPAN representative. Prices in this quotation are good until expiration date, shown in the top of this document. After that date, this proposal may be withdrawn. Prevailing Wage and Payment & Performance Bonds are not included unless stated in body of Sales Proposal. If Payment & Performance Bonds are needed, add 2.2% of the entire sales proposal.

This information required for order placement:

Accepted By (Please Print): \_\_\_\_\_

Accepted By (Title): \_\_\_\_\_

Accepted By (signature): \_\_\_\_\_

Date: \_\_\_\_\_

Date Equipment needed on site: \_\_\_\_\_

Bill To: \_\_\_\_\_

Ship To: \_\_\_\_\_

Address: \_\_\_\_\_

Address: \_\_\_\_\_

City, State, Zip: \_\_\_\_\_

City, State, Zip: \_\_\_\_\_

Contact: \_\_\_\_\_

Contact: \_\_\_\_\_

Contact Email: \_\_\_\_\_

Contact Email: \_\_\_\_\_

Contact Phone (Office): \_\_\_\_\_

Contact Phone (Office): \_\_\_\_\_

Contact Phone (Cell): \_\_\_\_\_

SALES TAX EXEMPTION CERTIFICATE #: \_\_\_\_\_

(PLEASE PROVIDE A COPY OF CERTIFICATE)



Rendered in Custom Evening Elegance Palette

# White Lake Township Stanley Park



Rendered in Custom Evening Elegance Palette

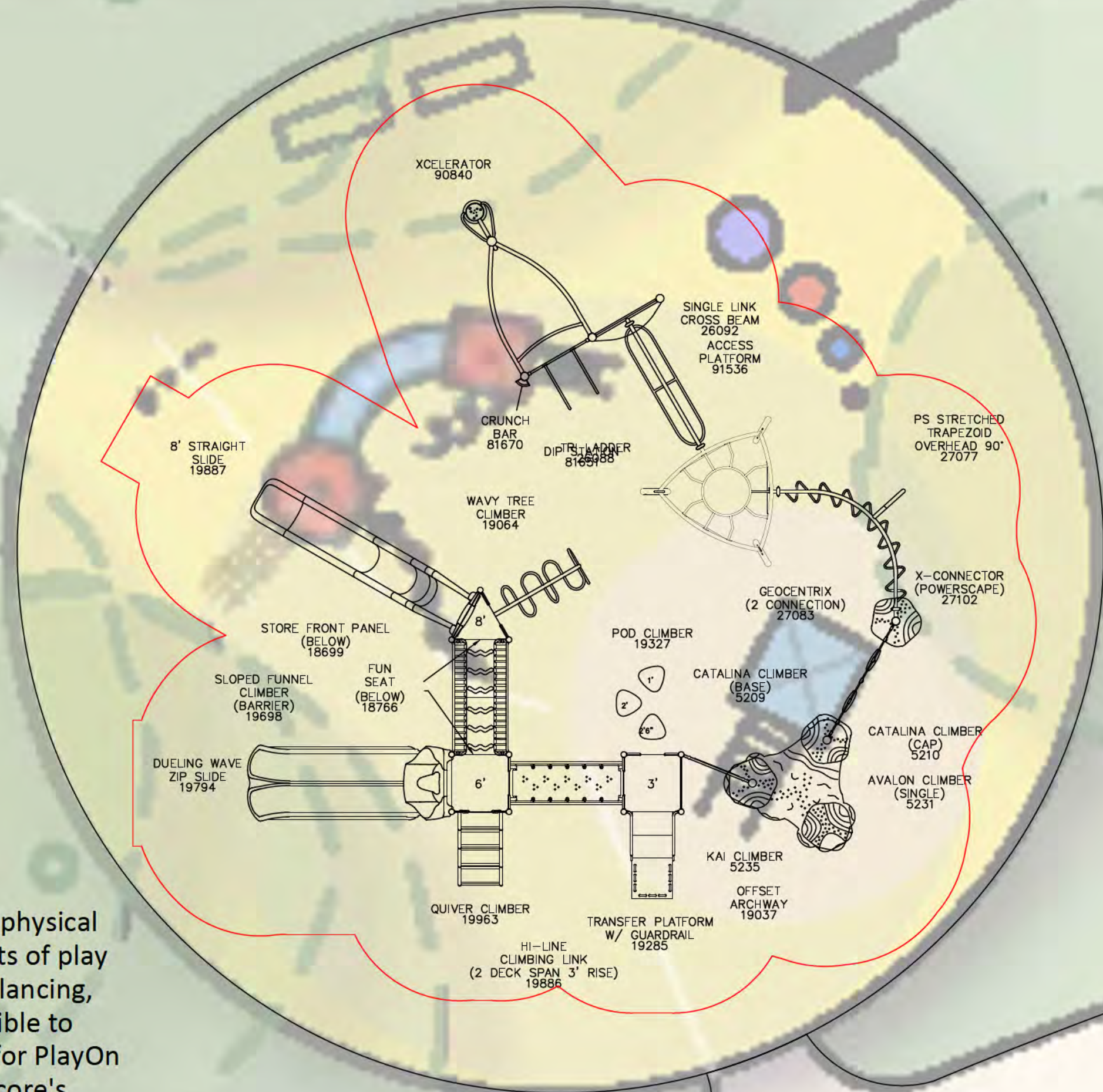
### White Lake Township Stanley Park



Rendered in Custom Evening Elegance Palette

# White Lake Township Stanley Park

**IMPORTANT:** Soft resilient surfacing should be placed in the use zones of all equipment, as specified for each type of equipment, and at depths to meet the critical fall heights as specified by the U.S. consumer Product Safety Commission, ASTM standard F 1487 and Canadian Standard CAN/CSA-Z-614



The proposed design encourages youth physical fitness through the six essential elements of play (swinging, spinning, sliding, climbing, balancing, and brachiating). Playground site is eligible to become a National Demonstration Site for PlayOn - designed following research from Playcore's Scholar Network - at no additional charge.

Minimum Area Required:

This play equipment is recommended for children ages 5-12

PROJECT TITLE: White Lake Township  
Stanley Park  
White Lake, MI

REPRESENTATIVE: Sinclair Recreation

DRAWING NO: White Lake - White Lake Twp - Stanley Park

DRAWN BY: ALW

DATE: 2/24/2026

# QUOTE

109097-01-01 • 02/24/2026



## Stanley Park - Statewide Initiative

**Customer:**

WHITE LAKE TOWNSHIP  
7525 HIGHLAND RD  
WHITE LAKE, MI 48383-2938  
United States

**Prepared for:**

Accounts Payable  
[Redacted]

**Prepared by:**

Playcore Wisconsin Inc, dba GameTime  
[Redacted]

Ship to Zip: 48383-2938

Quantity	Part #	Description	Unit Price	Amount
1	14927	GameTime - NDS Play On Sign Package		
1	RDU	<b>GameTime - PrimeTime Unit for 5-12 Year Olds</b> <ul style="list-style-type: none"> <li>(1) 5209 – Catalina Climber Base</li> <li>(1) 5210 – Catalina Climber Cap</li> <li>(1) 5231 – Avalon Climber Single 1'Pedestal FS</li> <li>(1) 5235 – Kai Climber to PT 2' Pedestal</li> <li>(3) 12024 – 3 1/2" Uprt Ass'Y Alum 9'</li> <li>(1) 12026 – 3 1/2" Uprt Ass'Y Alum 11'</li> <li>(4) 12027 – 3 1/2" Uprt Ass'Y Alum 12'</li> <li>(2) 18200 – 36" Sq Punched Deck P/T 1.3125</li> <li>(1) 18201 – 36" Tri Punched Deck P/T</li> <li>(1) 18699 – Store Front Panel 36"</li> <li>(1) 18766 – Fun Seat 36"</li> <li>(1) 19037 – Offset Archway</li> <li>(1) 19064 – Wavy Tree (7'-6" &amp; 8')</li> <li>(1) 19285 – Transfer Platform W/ Guardrail 3'</li> <li>(1) 19327 – Pod Climber</li> <li>(1) 19698 – Sloped Funnel Climber Barrier (Dbl)</li> <li>(1) 19794 – Dueling Wave Zip 6'-0"</li> <li>(1) 19886 – Hi Line Climb Link 2 Deck 3' Rise</li> <li>(1) 19887 – 8' Straight Slide</li> <li>(1) 19963 – 6' Quiver Climber</li> <li>(1) 26088 – Tri Ladder</li> <li>(1) 26092 – Ps Plus Single Link Cross Beam</li> <li>(4) 26094 – Triangular Shroud</li> <li>(1) 27077 – Stretched Trapezoid Overhead - 90 degra</li> <li>(1) 27083 – Geocentrix 2 Connection</li> <li>(1) 27102 – X Connector (Powerscape)</li> <li>(1) 81651 – Dip Station</li> <li>(1) 81670 – Crunch Bar</li> <li>(1) 90267 – 9' Upright, Alum</li> <li>(1) 90268 – 10' Upright, Alum</li> <li>(1) 90840 – Xcelerator</li> <li>(1) 91536 – Access Platform</li> <li>(3) G12069 – 3 1/2"Uprt Ass'Y Galv 14'</li> <li>(1) G90266 – 8' Upright, Galv</li> <li>(1) G90268 – 10' Upright, Galv</li> <li>(2) G90269 – 11' Upright, Galv</li> </ul>	\$80,494.96	\$80,494.96

# QUOTE

109097-01-01 • 02/24/2026



2535	EWF	GT-Impax - 12" Compacted depth engineered wood fiber surfacing, blown in	\$2.65	\$6,717.75
1	INSTALL	Installation - Installation of GameTime equipment into area Does not include: <ul style="list-style-type: none"><li>• Unloading or storage of equipment</li><li>• Site preparation or excavation</li><li>• Curbing or containment</li><li>• Concrete flatwork</li><li>• Drainage</li><li>• Site restoration or landscaping</li></ul>	\$26,225.00	\$26,225.00

Contract: OMNIA #2017001134

Sub Total	\$113,437.71
Statewide Initiative Funding Applied	(\$40,247.48)
Estimated Freight	\$1,800.00
<b>Grand Total</b>	<b>\$74,990.23</b>

## Comments

Funding assistance provided by GameTime must be used towards the purchase of a qualified playground structure. Other freestanding play products are available at our best pricing through Omnia Partners. Representatives from mParks, GameTime, and PlayCore will select qualifying projects to be considered for funding assistance. Funding can only be applied to additional GameTime playground equipment purchases and only in conjunction with the original purchase. GameTime standard policies and warranties as listed in the 2026 Catalog apply. Freight, installation, surfacing, material surcharges, and applicable sales tax are extra and not included as part of the funding program. To qualify for a 100% matching funds assistance, this project must be purchased with a check/cash with order of \$42,047.48

This quotation is subject to policies in the current GameTime Playground Catalog and the following terms and conditions. Our quotation is based on shipment of all items at one time to a single destination, unless noted, and changes are subject to price adjustment. Purchases to be supported by your written purchase order made out to GAMETIME C/O SINCLAIR RECREATION. **A 2.5% PROCESSING FEE WILL BE ADDED TO ALL ORDERS PAID VIA CREDIT CARD.**