

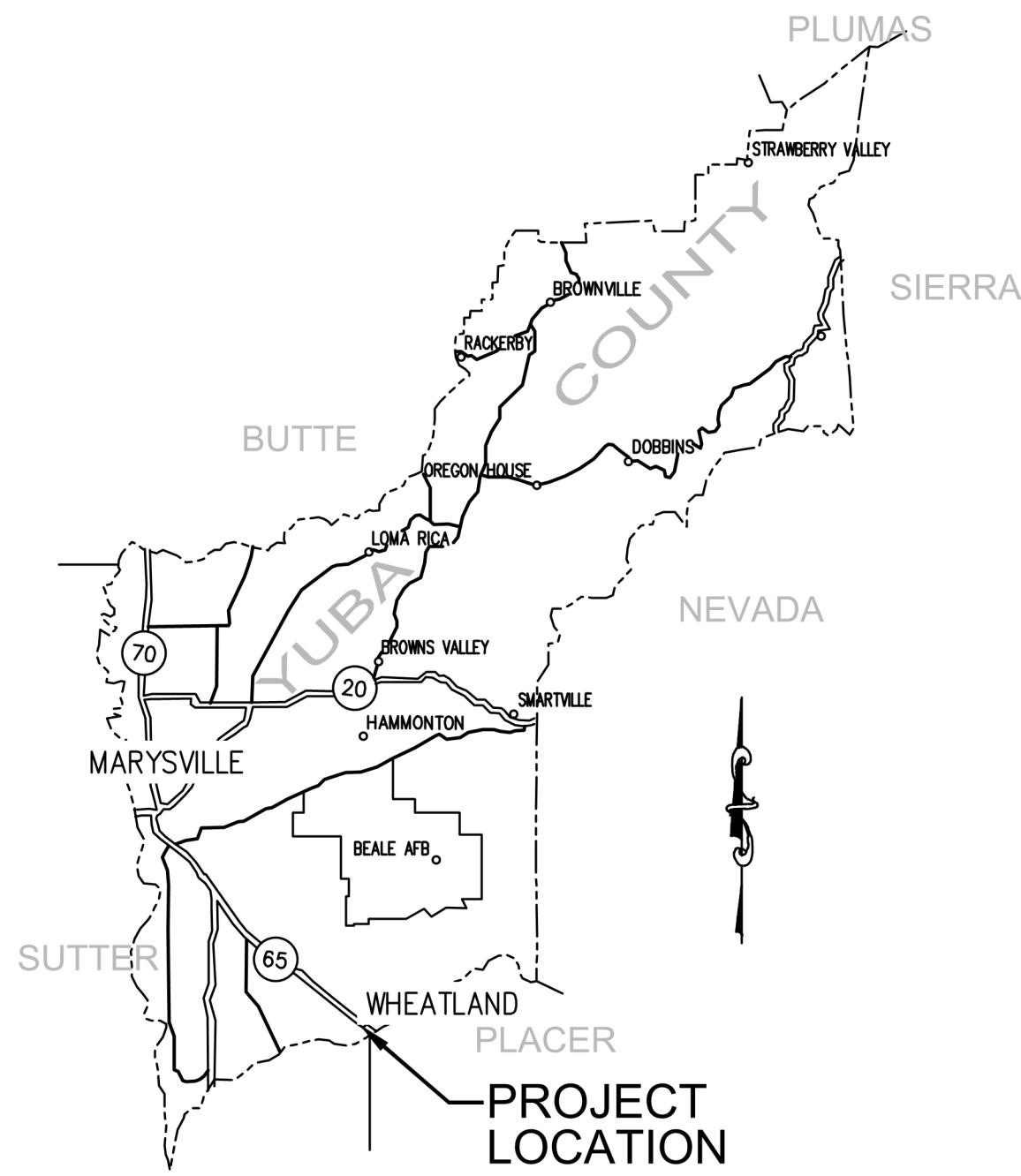
# PROJECT PLANS FOR : WHEATLAND REGIONAL SEWER PIPELINE PROJECT

## VOLUME 4 - PIPELINE DRAWINGS

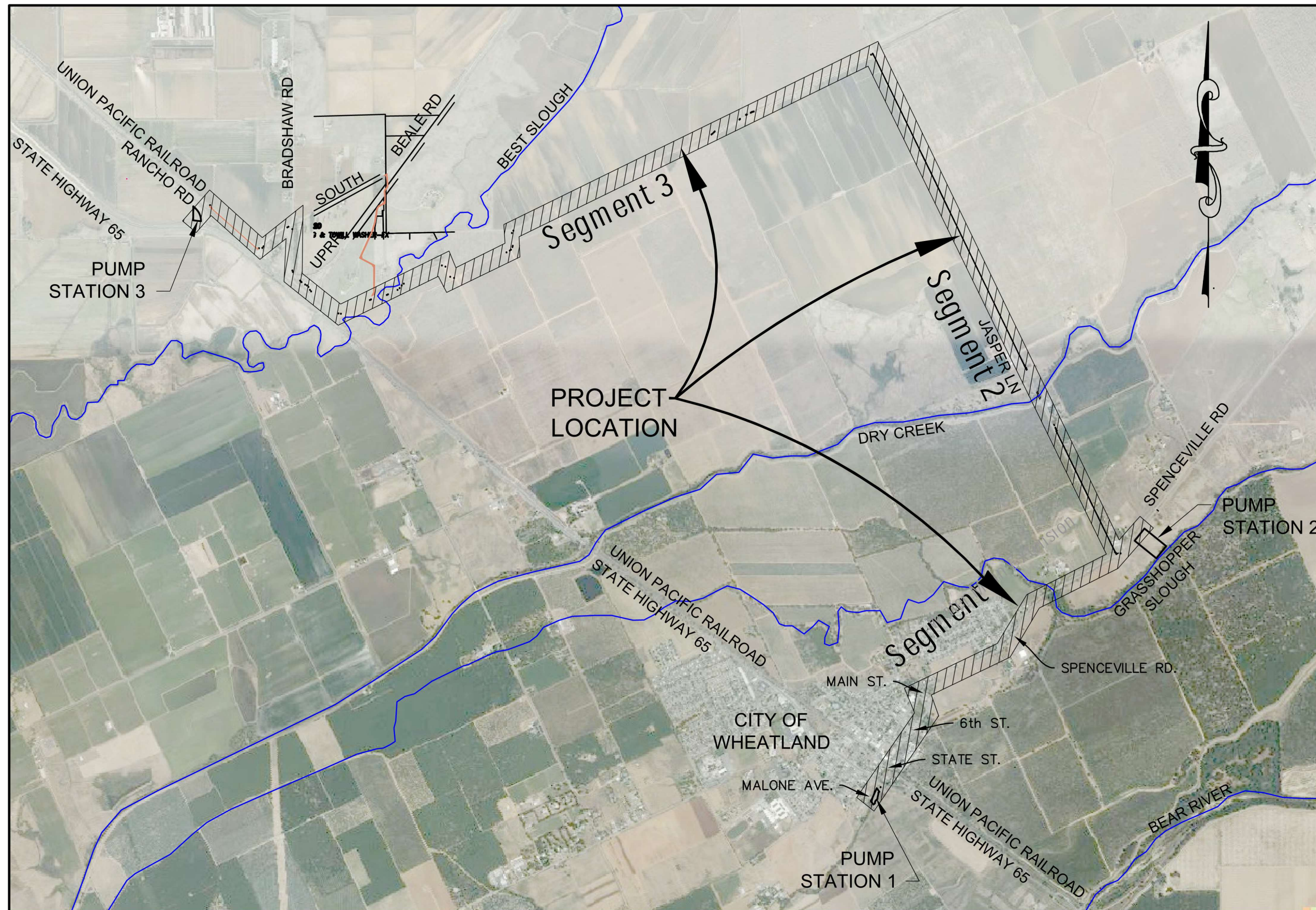
10/10/2025

BID SET

CITY OF WHEATLAND  
YUBA COUNTY, CALIFORNIA



**LOCATION MAP**  
NOT TO SCALE



**VICINITY MAP**  
NOT TO SCALE

**NOTE:**  
VOLUME 3 PUMP STATIONS PLANS SHOWN ON  
DRAWINGS FOR REFERENCE ONLY. PUMP STATION  
CONSTRUCTION TO BE BID AND CONSTRUCTED  
UNDER SEPARATE CONTRACT.

WDID NUMBER: \_\_\_\_\_

DIR NUMBER: \_\_\_\_\_

**FOR CONSTRUCTION**  
DATE: 10/10/2025

**CITY OF WHEATLAND**  
APPROVED DATE \_\_\_\_\_  
  
TERRENCE Y. HILL  
PUBLIC WORKS DIRECTOR

**GEOTECHNICAL ENGINEER:**  
**BLACKBURN CONSULTING**  
DANIEL CONTRERAS  
916-375-8706  
11521 BLOCKER DRIVE, STE. 110  
AUBURN, CA 95603

**PUMP STATION DESIGN:**  
**NEXGEN ENGINEERING & CONSULTING**  
DAN RICH  
916-564-8000  
4010 LENNANE DRIVE  
SACRAMENTO, CA 95834

Funding for this project has been provided in part through an agreement with the State Water Resources Control Board. California's Clean Water State Revolving Fund is capitalized through a variety of funding sources, including grants from the United States Environmental Protection Agency and state bond proceeds. Funding has also been provided in part by the Yuba Water Agency.

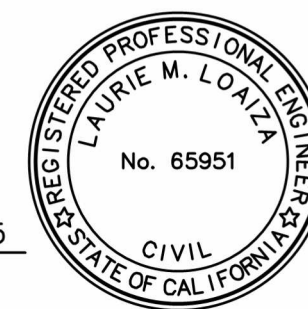


The contents of this document do not necessarily reflect the views and policies of the foregoing, nor does mention of trade names or commercial products constitute endorsement or recommendation for use.

**COASTLAND | DCCM**

COASTLAND | DCCM  
11641 Blocker Dr, Ste 170  
Auburn, CA 95603  
530.888.9929 | coastlandcivil.com

*Laurie M. Loaiza*  
LAURIE M. LOAIZA, RCE 65951  
DATE: 10/10/2025



REVISIONS			
MARK	DESCRIPTION	DATE	APPD
1			
2			
3			
4			
5			

**CITY OF WHEATLAND**  
APPROVED DATE 11/11/2025  
*D.H.S.*  
DANE H. SCHILLING PE  
CITY ENGINEER

PROJECT NUMBER  
77-4508  
DATE: 10/10/2025  
DRAWING NUMBER  
**G.01**  
SHEET NO.:  
1 OF 142

ORIGINAL PLOT DATE: 3  
 FOR REDUCED PLANS, THE ORIGINAL SCALE IS IN INCHES: 2  
 1  
 0  
 Path: T:\Civil\_3D\Projects\774508\Wheatland Regional Sewer\Drawings\774508 Title Sheet.dwg, Layout Name: COVER SHEET Plot Date: Oct 10, 2025 at 03:11 pm

WHEATLAND REGIONAL SEWER PIPELINE PROJECT

# DRAWING NUMBERING SYSTEM

THE FORCE MAIN DRAWINGS ARE SUBDIVIDED INTO THE FOLLOWING CATEGORIES DISTINGUISHED BY THE FOLLOWING PREFIXES TO THEIR NUMBERS.

- G.## GENERAL
- F1.C## FORCEMAIN SEGMENT 1 PLAN & PROFILE DRAWINGS
- F2.C## FORCEMAIN SEGMENT 2 PLAN & PROFILE DRAWINGS
- F3.C## FORCEMAIN SEGMENT 3 PLAN & PROFILE DRAWINGS
- F.T## FORCEMAIN TYPICAL CROSS SECTIONS
- F.D## FORCEMAIN DETAILS
- R.C## ACCESS ROAD PLANS AND DETAILS
- W.C## WATER MAIN PLAN & PROFILE DRAWINGS
- W.D## WATER MAIN DETAILS
- EC## EROSION CONTROL DRAWINGS

## SHEET INDEX - VOLUME 4: PIPELINE DRAWINGS

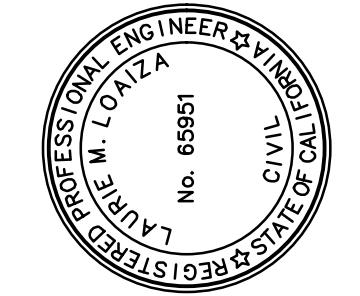
SHEET NUMBER	DRAWING NUMBER	SHEET TITLE
1	G.01	COVER SHEET
2	G.02	SHEET INDEX - 1
3	G.03	GENERAL NOTES - 1
4	G.04	GENERAL NOTES - 2
5	G.05	GENERAL NOTES - 3
6	G.07	STANDARD ABBREVIATIONS & LEGENDS
7	G.08	SHEET LOCATION KEY MAP
8	G.09	STAGING AND STORAGE AREAS
9	G.10	SURVEY HORIZONTAL CONTROL & BASIS OF BEARINGS
10	G.11	SURVEY HORIZONTAL CONTROL - 2
11	G.12	SURVEY HORIZONTAL CONTROL - 3
12	G.13	HYDRAULIC GRADE LINE - 1
13	G.14	HYDRAULIC GRADE LINE - 2
14	F1.C01	PLAN & PROFILE - SEGMENT 1 STA 1002+37 TO STA 1006+00
<u>FORCE MAIN SEGMENT 1 - PLAN AND PROFILES</u>		
15	F1.C02	PLAN & PROFILE - SEGMENT 1 STA 1006+00 TO STA 1010+50
16	F1.C03	PLAN & PROFILE - SEGMENT 1 STA 1010+50 TO STA 1014+50
17	F1.C04	PLAN & PROFILE - SEGMENT 1 STA 1014+50 TO STA 1018+00
18	F1.C05	PLAN & PROFILE - SEGMENT 1 STA 1018+00 TO STA 1022+50
19	F1.C06	PLAN & PROFILE - SEGMENT 1 STA 1022+50 TO STA 1025+00
20	F1.C07	PLAN & PROFILE - SEGMENT 1 STA 1025+00 TO STA 1028+50
21	F1.C08	PLAN & PROFILE - SEGMENT 1 STA 1028+50 TO STA 1031+50
22	F1.C09	PLAN & PROFILE - SEGMENT 1 STA 1031+50 TO STA 1035+50
23	F1.C10	PLAN & PROFILE - SEGMENT 1 STA 1035+50 TO STA 1039+50
24	F1.C11	PLAN & PROFILE - SEGMENT 1 STA 1039+50 TO STA 1043+50
25	F1.C12	PLAN & PROFILE - SEGMENT 1 STA 1043+50 TO STA 1047+50
26	F1.C13	PLAN & PROFILE - SEGMENT 1 STA 1047+50 TO STA 1051+50
27	F1.C14	PLAN & PROFILE - SEGMENT 1 STA 1051+50 TO STA 1055+50
28	F1.C15	PLAN & PROFILE - SEGMENT 1 STA 1055+50 TO STA 1059+50
29	F1.C16	PLAN & PROFILE - SEGMENT 1 STA 1059+50 TO STA 1063+50
30	F1.C17	PLAN & PROFILE - SEGMENT 1 STA 1063+50 TO STA 1067+50
31	F1.C18	PLAN & PROFILE - SEGMENT 1 STA 1067+50 TO STA 1071+50
32	F1.C19	PLAN & PROFILE - SEGMENT 1 STA 1071+50 TO STA 1075+50
33	F1.C20	PLAN & PROFILE - SEGMENT 1 STA 1075+50 TO STA 1079+50
34	F1.C21	PLAN & PROFILE - SEGMENT 1 STA 1079+50 TO STA 1082+50
35	F1.C22	PLAN & PROFILE - SEGMENT 1 STA 1082+50 TO STA 1085+50
36	F1.C23	PLAN & PROFILE - SEGMENT 1 STA 1085+50 TO STA 1088+00
37	F1.C24	PLAN & PROFILE - SEGMENT 1 STA 1088+00 TO STA 1089+32
38	F2.C01	PLAN & PROFILE - SEGMENT 2 STA 2002+29.88 TO STA 2007+50
<u>FORCE MAIN SEGMENT 2 - PLAN AND PROFILES</u>		
39	F2.C02	PLAN & PROFILE - SEGMENT 2 STA 2007+50 TO STA 2014+50
40	F2.C03	PLAN & PROFILE - SEGMENT 2 STA 2014+50 TO STA 2022+50
41	F2.C04	PLAN & PROFILE - SEGMENT 2 STA 2022+50 TO STA 2031+50
42	F2.C05	PLAN & PROFILE - SEGMENT 2 STA 2031+50 TO STA 2039+50
43	F2.C06	PLAN & PROFILE - SEGMENT 2 STA 2039+50 TO STA 2048+00
44	F2.C07	PLAN & PROFILE - SEGMENT 2 STA 2048+00 TO STA 2056+00
45	F2.C08	PLAN & PROFILE - SEGMENT 2 STA 2056+00 TO STA 2060+50
46	F2.C09	PLAN & PROFILE - SEGMENT 2 STA 2060+50 TO STA 2068+50
47	F2.C10	PLAN & PROFILE - SEGMENT 2 STA 2068+50 TO STA 2076+50
48	F2.C11	PLAN & PROFILE - SEGMENT 2 STA 2076+50 TO STA 2084+50
49	F2.C12	PLAN & PROFILE - SEGMENT 2 STA 2084+50 TO STA 2092+50
50	F2.C13	PLAN & PROFILE - SEGMENT 2 STA 2092+50 TO STA 2100+50
51	F2.C14	PLAN & PROFILE - SEGMENT 2 STA 2100+50 TO STA 2108+50
52	F2.C15	PLAN & PROFILE - SEGMENT 2 STA 2108+50 TO STA 2116+50
53	F2.C16	PLAN & PROFILE - SEGMENT 2 STA 2116+50 TO STA 2124+50
54	F2.C17	PLAN & PROFILE - SEGMENT 2 STA 2124+50 TO STA 2131+50
55	F2.C18	PLAN & PROFILE - SEGMENT 2 STA 2131+50 TO STA 2133+68.21

SHEET NUMBER	DRAWING NUMBER	SHEET TITLE
<u>FORCE MAIN SEGMENT 3 - PLAN AND PROFILES</u>		
56	F3.C01	PLAN & PROFILE - SEGMENT 3 STA 3000+00 TO STA 3007+00
57	F3.C02	PLAN & PROFILE - SEGMENT 3 STA 3007+00 TO STA 3015+00
58	F3.C03	PLAN & PROFILE - SEGMENT 3 STA 3015+00 TO STA 3023+00
59	F3.C04	PLAN & PROFILE - SEGMENT 3 STA 3023+00 TO STA 3029+00
60	F3.C05	PLAN & PROFILE - SEGMENT 3 STA 3029+00 TO STA 3034+50
61	F3.C06	PLAN & PROFILE - SEGMENT 3 STA 3034+50 TO STA 3041+00
62	F3.C07	PLAN & PROFILE - SEGMENT 3 STA 3041+00 TO STA 3047+00
63	F3.C08	PLAN & PROFILE - SEGMENT 3 STA 3047+00 TO STA 3055+00
64	F3.C09	PLAN & PROFILE - SEGMENT 3 STA 3055+00 TO STA 3063+00
65	F3.C10	PLAN & PROFILE - SEGMENT 3 STA 3063+00 TO STA 3071+00
66	F3.C11	PLAN & PROFILE - SEGMENT 3 STA 3071+00 TO STA 3079+00
67	F3.C12	PLAN & PROFILE - SEGMENT 3 STA 3079+00 TO STA 3087+00
68	F3.C13	PLAN & PROFILE - SEGMENT 3 STA 3087+00 TO STA 3091+00
69	F3.C14	PLAN & PROFILE - SEGMENT 3 STA 3091+00 TO STA 3095+00
70	F3.C15	PLAN & PROFILE - SEGMENT 3 STA 3095+00 TO STA 3102+00
71	F3.C16	PLAN & PROFILE - SEGMENT 3 STA 3102+00 TO STA 3108+00
72	F3.C17	PLAN & PROFILE - SEGMENT 3 STA 3108+00 TO STA 3113+00
73	F3.C18	PLAN & PROFILE - SEGMENT 3 STA 3113+00 TO STA 3120+00
74	F3.C19	PLAN & PROFILE - SEGMENT 3 STA 3120+00 TO STA 3124+00
75	F3.C20	PLAN & PROFILE - SEGMENT 3 STA 3124+00 TO STA 3132+50
76	F3.C21	PLAN & PROFILE - SEGMENT 3 STA 3132+50 TO STA 3139+00
77	F3.C22	PLAN & PROFILE - SEGMENT 3 STA 3137+00 TO STA 3145+50
78	F3.C23	PLAN & PROFILE - SEGMENT 3 STA 3145+50 TO STA 3153+00
79	F3.C24	PLAN & PROFILE - SEGMENT 3 STA 3153+00 TO STA 3161+00
80	F3.C25	PLAN & PROFILE - SEGMENT 3 STA 3161+00 TO STA 3168+50
81	F3.C26	PLAN & PROFILE - SEGMENT 3 STA 3168+50 TO STA 3173+00
82	F3.C27	PLAN & PROFILE - SEGMENT 3 STA 3173+00 TO STA 3181+00
83	F3.C28	PLAN & PROFILE - SEGMENT 3 STA 3181+00 TO STA 3185+00
84	F3.C29	PLAN & PROFILE - SEGMENT 3 STA 3185+00 TO STA 3189+10
<u>FORCE MAIN TYPICAL CROSS SECTIONS</u>		
85	F.T01	FORCEMAIN TYPICAL CROSS SECTIONS - 1
86	F.T02	FORCEMAIN TYPICAL CROSS SECTIONS - 2
87	F.T03	FORCEMAIN TYPICAL CROSS SECTIONS - 3
<u>FORCE MAIN DETAILS</u>		
88	F.D01	DETAILS - 1
89	F.D02	DETAILS - 2
90	F.D03	DETAILS - 3
91	F.D04	DETAILS - 4
92	F.D05	DETAILS - 5
93	F.D06	DETAILS - 6
94	F.D07	DETAILS - 7
95	F.D08	DETAIL - SIXTH STREET BORE AND JACK
96	F.D09	DETAIL - STATE STREET CULVERT REPLACEMENT
97	P.01	SOUTH BEALE PAVING SHEET 1
<u>FORCE MAIN ACCESS ROAD</u>		
98	R.C01	ACCESS ROAD OVERALL
99	R.C02	ACCESS ROAD ALIGNMENT TABLES
100	R.C03	ACCESS ROAD STA 200+00 TO STA 501+00
101	R.C04	ACCESS ROAD STA 501+00 TO STA 541+00
102	R.C05	ACCESS ROAD STA 541+00 TO STA 578+00
103	R.C06	ACCESS ROAD STA 578+00 TO STA 593+11
104	R.C07	ACCESS ROAD STA 700+00 TO STA 732+00
105	R.C08	ACCESS ROAD STA 732+00 TO STA 743+20
106	R.C15	ACCESS ROAD CANAL CROSSING LAYOUT
107	R.C16	ACCESS ROAD CANAL CROSSING GRADING PLAN

SHEET NUMBER	DRAWING NUMBER	SHEET TITLE
<u>WATERLINE PLANS</u>		
108	W.C01	WATERLINE PLAN & PROFILE STA 43+30.91 TO STA 46+50
109	W.C02	WATERLINE PLAN & PROFILE STA 46+50 TO STA 50+50
110	W.C03	WATERLINE PLAN & PROFILE STA 52+00 TO STA 54+00
111	W.C04	WATERLINE PLAN & PROFILE STA 54+00 TO STA 58+00
112	W.C05	WATERLINE PLAN & PROFILE STA 58+00 TO STA 62+00
113	W.C06	WATERLINE PLAN & PROFILE STA 62+00 TO STA 66+00
114	W.C07	WATERLINE PLAN & PROFILE STA 66+00 TO STA 70+00
115	W.C08	WATERLINE PLAN & PROFILE STA 70+00 TO STA 74+00
116	W.C09	WATERLINE PLAN & PROFILE STA 74+00 TO STA 78+00
117	W.C10	WATERLINE PLAN & PROFILE STA 78+00 TO STA 82+00
118	W.C11	WATERLINE PLAN & PROFILE STA 82+00 TO STA 86+00
119	W.C12	WATERLINE PLAN & PROFILE STA 86+00 TO STA 89+30.82+00
120	W.D1	WATERLINE DETAILS - 1
121	W.D2	WATERLINE DETAILS - 2
<u>EROSION CONTROL DRAWINGS</u>		
122	EC01	EROSION CONTROL STA 1001+50 TO STA 1023+50
123	EC02	EROSION CONTROL STA 1023+50 TO STA 1047+00
124	EC03	EROSION CONTROL STA 1047+00 TO STA 1071+00
125	EC04	EROSION CONTROL STA 1071+00 TO STA 1090+16
126	EC05	EROSION CONTROL STA 2002+22 TO STA 2024+50
127	EC06	EROSION CONTROL STA 2024+50 TO STA 2048+50
128	EC07	EROSION CONTROL STA 2048+50 TO STA 2072+50
129	EC08	EROSION CONTROL STA 2072+50 TO STA 2096+50
130	EC09	EROSION CONTROL STA 2096+50 TO STA 2120+50
131	EC10	EROSION CONTROL STA 2120+50 TO STA 2134+37
132	EC11	EROSION CONTROL STA 3000+00 TO STA 3024+00
133	EC12	EROSION CONTROL STA 3024+00 TO STA 3048+00
134	EC13	EROSION CONTROL STA 3048+00 TO STA 3072+00
135	EC14	EROSION CONTROL STA 3072+00 TO STA 3094+50
136	EC15	EROSION CONTROL STA 3094+50 TO STA 3110+00
137	EC16	EROSION CONTROL STA 3110+50 TO STA 3135+00
138	EC17	EROSION CONTROL STA 3135+00 TO STA 3152+50
139	EC18	EROSION CONTROL STA 3152+50 TO STA 3172+50
140	EC19	EROSION CONTROL STA 3172+50 TO STA 3189+53
141	EC20	EROSION CONTROL ACCESS ROAD STA 713+50 TO STA 743+20
142	EC21	EROSION CONTROL DETAILS

FOR REDUCED PLANS, THE ORIGINAL SCALE IS IN INCHES

Path: T:\Civil\_3D\Projects\774508\Wheatland Regional Sewer\Drawings\Sheet\Index-1.dwg, Title: SHEET INDEX-1, Plot Date: Oct 10, 2025 at 03:11 pm



PREPARED UNDER THE DIRECTION OF  
  
 LAURIE M. LOAZA, RCE 65951 DATE: 10/10/2025  
 DESIGNED BY: LML/ERG  
 DRAWN BY: ERG  
 REVIEWED BY: DHS/LML

**DCCM**  
**Coastland**  
 Coastland | DCCM  
 11641 Blocker Dr., Ste 170  
 Auburn, CA 95603  
 530.888.9929 | coastland.dccm.com

CALIFORNIA  
 WHEATLAND REGIONAL SEWER PIPELINE PROJECT  
 CITY OF WHEATLAND  
**SHEET INDEX - 1**

PROJECT NUMBER	77-4508
DATE:	10/10/2025
DRAWING NUMBER	G.02
SHEET NO:	2 OF 142

**FOR CONSTRUCTION**  
 DATE: 10/10/2025

**GENERAL NOTES**

- WORK SHALL BE IN CONFORMANCE WITH THE ENVIRONMENTAL REQUIREMENTS AS OUTLINED IN THE PROJECTS ENVIRONMENTAL DOCUMENTS APPENDED TO THESE CONTRACT DOCUMENTS.
- THE CONTRACTOR SHALL OBTAIN ALL NECESSARY CONSTRUCTION PERMITS, RIGHTS OF ENTRY, APPROVALS AND LICENSES PRIOR TO BEGINNING CONSTRUCTION. SOME CONSTRUCTION IS TO OCCUR IN THE CALTRANS RIGHT-OF-WAY. ALL COSTS FOR OBTAINING NECESSARY PERMITS SHALL BE AT CONTRACTOR'S EXPENSE. THE ENCROACHMENT PERMIT WILL BE ISSUED AT NO COST TO THE CONTRACTOR.
- THE ENGINEER PREPARING THESE PLANS WILL NOT BE RESPONSIBLE FOR, OR LIABLE FOR, UNAUTHORIZED CHANGES TO OR USES OF THESE PLANS. ALL CHANGES TO THE PLANS MUST BE IN WRITING AND MUST BE APPROVED BY THE PREPARER OF THESE PLANS.
- ALL CONSTRUCTION SHALL BE PERFORMED IN ACCORDANCE WITH APPLICABLE HEALTH AND SAFETY LAWS OF THE STATE OF CALIFORNIA AND CAL/OSHA STANDARDS. THE CONTRACTOR SHALL OBTAIN A PERMIT FROM THE DEPARTMENT OF INDUSTRIAL RELATIONS, DIVISION OF OCCUPATIONAL SAFETY AND HEALTH (CAL-OSHA) WHEN TRENCH EXCAVATIONS EXCEED 5'-0". CONTACT CAL-OSHA FOR FURTHER INFORMATION (HEALTH AND SAFETY CODE 17922.5).
- ALL WORKMANSHIP, MATERIALS, AND CONSTRUCTION SHALL CONFORM TO THE PROJECT SPECIFICATIONS, THE LATEST EDITION OF THE CITY OF WHEATLAND IMPROVEMENT STANDARDS, THE LATEST EDITION OF THE STATE OF CALIFORNIA DEPARTMENT OF TRANSPORTATION STANDARD SPECIFICATIONS, THE LATEST EDITION OF THE YUBA COUNTY IMPROVEMENT STANDARDS, ASTM STANDARDS, AWWA STANDARDS, AND THE MANUAL ON UNIFORM TRAFFIC CONTROL DEVICES (MUTCD). THE CONTRACTOR SHALL BE RESPONSIBLE FOR UNDERSTANDING ALL STANDARDS PERTAINING TO THE PROJECT.
- CONSTRUCTION BIDS SHALL BE BASED ON THE WORK REQUIRED BY THIS PLAN SET AND SPECIFICATIONS, WHETHER OR NOT SPECIFICALLY ITEMIZED ON THE BID SHEET, TO CONSTRUCT PIPE, LIFT STATION, AND TREATMENT PLANT IMPROVEMENTS COMPLETE IN PLACE SEWER FACILITIES THAT ARE SUITABLE FOR THEIR INTENDED PURPOSE.
- CONTRACTOR SHALL FIELD VERIFY THE HORIZONTAL AND VERTICAL LOCATIONS OF ALL EXISTING UTILITIES AND FACILITIES PRIOR TO COMMENCING WORK. CALL UNDERGROUND SERVICE ALERT (USA) AT 811. CONTRACTOR SHALL MAKE ENGINEER AWARE OF ANY DISCREPANCIES.
- BEFORE COMMENCING WORK, THE CONTRACTOR SHALL NOTIFY, IN WRITING, RESIDENTS AND BUSINESS ESTABLISHMENTS ALONG THE ROUTE OF THE WORK AT LEAST TEN (10) WORKING DAYS PRIOR TO ROAD CLOSURES AND AT LEAST THREE (3) WORKING DAYS PRIOR TO DISRUPTION OF INGRESS AND EGRESS. THE NOTICE PROVIDED TO THE RESIDENCES OR BUSINESSES SHALL INCLUDE, AT A MINIMUM, SCHEDULE OF LANE OR ROAD CLOSURES AND/OR PARKING RESTRICTIONS WITH ESTIMATED DURATION, ALTERNATE ROUTE OR DETOUR, AND NAME AND TWENTY-- FOUR (24) HOUR PHONE NUMBER OF A PRIMARY CONTACT AND BACK-UP CONTACT EMPLOYED BY THE CONTRACTOR.
- THE CONTRACTOR MUST OBTAIN WRITTEN PERMISSION FROM THE OWNER OF ANY PRIVATELY OWNED PROPERTY PRIOR TO BEGINNING ANY WORK, STORING MATERIALS OR OTHERWISE CONDUCTING ANY OPERATIONS ON SAID PROPERTY. THE WRITTEN APPROVAL FROM THE PROPERTY OWNER MUST BE ON FILE WITH THE CITY BEFORE ANY OPERATIONS WILL BE PERMITTED ON SAID PROPERTY.
- ANY PUBLIC OR PRIVATE PROPERTY INCLUDING LANDSCAPING, IRRIGATION OR OTHER IMPROVEMENTS WHICH IS DAMAGED BY THE CONTRACTOR'S OPERATIONS SHALL BE REPAIRED OR REPLACED IN KIND AT NO ADDITIONAL COST TO THE CITY AND TO THE SATISFACTION OF THE ENGINEER.
- THE CONTRACTOR IS RESPONSIBLE FOR HAVING A COMPLETE SET OF CONTRACT PLANS AND SPECIFICATIONS, COUNTY PERMITS, SWPPP, AND THE LATEST GOVERNING STANDARD SPECIFICATIONS AT THE PROJECT SITE DURING WORK HOURS.
- EXCAVATIONS OVER FIVE FEET (5') DEEP REQUIRE AN EXCAVATION PERMIT FROM THE STATE DEPARTMENT OF INDUSTRIAL SAFETY.
- CONSTRUCTION CONTRACTOR AGREES THAT IN ACCORDANCE WITH GENERALLY ACCEPTED CONSTRUCTION PRACTICES, CONSTRUCTION CONTRACTOR WILL BE REQUIRED TO ASSUME SOLE AND COMPLETE RESPONSIBILITY FOR JOB SITE CONDITIONS DURING THE COURSE OF CONSTRUCTION OF THE PROJECT, INCLUDING SAFETY OF ALL PERSONS AND PROPERTY; THAT THIS REQUIREMENT SHALL BE MADE TO APPLY CONTINUOUSLY AND NOT BE LIMITED TO NORMAL WORKING HOURS.
- THE CONTRACTOR SHALL KEEP UP-TO-DATE A COMPLETE RECORD SET OF RED-LINED PRINTS OF THE CONTRACT DRAWINGS SHOWING EVERY CHANGE FROM THE ORIGINAL DRAWINGS MADE DURING THE COURSE OF CONSTRUCTION, INCLUDING EXACT LOCATIONS, SIZES, MATERIALS, AND EQUIPMENT. A COMPLETE SET OF CORRECTED AND COMPLETED RECORD DRAWINGS SHALL BE SUBMITTED TO THE CITY PRIOR TO FINAL ACCEPTANCE OF THE PROJECT.
- THE CONTRACTOR IS RESPONSIBLE FOR PROVIDING ALL POWER, UTILITIES, AND TEMPORARY FACILITIES THAT ARE NECESSARY TO COMPLETE THE WORK.
- THE CONTRACTOR SHALL BE RESPONSIBLE FOR RECYCLING/DISPOSAL OF ALL BITUMINOUS PAVEMENT, CONCRETE, REINFORCEMENT, AND SPOILS NOT NEEDED FOR BACKFILL PER THE CONTRACT SPECIFICATIONS. MATERIAL DISPOSED OF SHALL BE AT AN APPROVED DISPOSAL FACILITY. ALL EXCESS MATERIAL AND/OR DEBRIS SHALL BE REMOVED UPON COMPLETION OF INSTALLATION.
- THE CONTRACTOR SHALL COVER ALL TRENCHES WITHIN IMPROVED AREAS AT THE END OF EACH WORKDAY PER THE CONTRACT DOCUMENTS.
- ALL TRAVELED WALKWAYS SHALL BE SAFE AND USABLE AT THE END OF EACH WORK DAY PER THE MUTCD.
- THE CONTRACTOR SHALL MAINTAIN REASONABLE ACCESS TO ALL DRIVEWAYS DURING CONSTRUCTION. MAIL SERVICE SHALL BE MAINTAINED THROUGHOUT THE COURSE OF THIS PROJECT. THE U.S. POSTAL SERVICE SHALL HAVE UNINTERRUPTED ACCESS TO MAILBOXES AT ALL TIMES.
- ALL FIELD STAKING AND SITE LAYOUT SHALL BE PERFORMED BY OR UNDER THE DIRECTION OF A PROFESSIONAL LAND SURVEYOR OR CIVIL ENGINEER LICENSED IN THE STATE OF CALIFORNIA AT THE EXPENSE OF THE CONTRACTOR. SURVEY CONTROL ESTABLISHED BY THE DESIGN TEAM AND CAD FILES WITH DESIGN LAYOUT WILL BE AVAILABLE TO THE CONTRACTOR'S SURVEYOR FOR CONSTRUCTION STAKING PURPOSES.
- TRENCH BACKFILL AND BRIDGE EMBANKMENTS SHALL BE COMPACTED IN ACCORDANCE WITH THE SPECIFICATIONS AND THE GEOTECHNICAL REPORT CONTAINED IN THE CONTRACT SPECIFICATIONS.
- THE CONTRACTOR SHALL PROTECT AND PRESERVE COUNTY MONUMENTS PER COUNTY STANDARDS. THE CONTRACTOR SHALL NOTIFY THE ENGINEER OF MONUMENTS ENCOUNTERED, AND SHALL NOT REMOVE OR DAMAGE SAID MONUMENT UNTIL THE MONUMENT CAN BE CROSS REFERENCED AND TIED OUT BY THE SURVEY PARTY. CONTRACTOR SHALL BE RESPONSIBLE FOR AND INCUR ALL COSTS FOR THE SURVEY PARTY.
- FOR CLARITY OF EXISTING SUBSURFACE CONDITIONS, NOT ALL CROSSWALKS, STOP BARS, OR EXISTING PAVEMENT MARKINGS ARE SHOWN ON THE PLANS. TRAFFIC STRIPES, RAISED PAVEMENT MARKERS AND PAVEMENT MARKINGS DAMAGED DUE TO THE CONTRACTOR'S OPERATIONS SHALL BE REPLACED IN KIND. PATCHING OF DAMAGED MARKINGS WILL NOT BE ALLOWED WITHOUT PRIOR APPROVAL FROM THE ENGINEER. REFER TO SPECIFICATIONS FOR DISPOSAL OF MATERIALS WHICH CONTAIN PAVEMENT MARKINGS AS PAINT MAY CONTAIN LEAD.
- WHERE APPLICABLE, ALL UTILITY COVERS SHALL BE BROUGHT TO GRADE WITHIN 48 HOURS OF PAVING. ALL EXISTING UTILITY VAULTS AND/OR PULL BOXES THAT ARE LOOSE AND/OR BROKEN SHALL BE RE-SECURED AND/OR REPLACED TO THE COUNTY'S SATISFACTION.
- THE CONTRACTOR SHALL BE SOLELY AND COMPLETELY RESPONSIBLE FOR CONDITION OF PREMISES ON WHICH WORK IS PERFORMED AND FOR THE SAFETY OF ALL PERSONS AND PROPERTY ON THE SITE, BOTH DURING AND OUTSIDE OF NORMAL WORKING HOURS, UNTIL SUCH WORK IS ACCEPTED BY THE OWNER.
- ALL CONSTRUCTION MATERIALS, EQUIPMENT, STORAGE, STOCKPILING AND STAGING MUST BE DONE WITHIN PUBLIC RIGHT-OF-WAY, OR WITHIN PRIVATE PROPERTY WITH WRITTEN PERMISSION FROM THE OWNER. THE PUBLIC RIGHT-OF-WAY/STREET MUST BE KEPT CLEAR AND FREE OF DEBRIS WHILE WORKING WITHIN, EXCEPT IN THOSE AREAS:  
26.1. PERMITTED FOR USE TO ALLOW CONSTRUCTION OPERATIONS WITHIN  
26.2. PERMITTED FOR USE AS TEMPORARY STORAGE, STOCKPILING, AND/OR STAGING FACILITIES.
- ALL CAST-IN-PLACE CONCRETE STRUCTURES SHALL BE FORMED INSIDE AND OUT AND CONCRETE VIBRATED SUFFICIENTLY TO PROVIDE FOR SMOOTH SURFACED WALLS/FLOORS WITHOUT VOIDS AND HONEYCOMBS.
- CITY SHALL INSPECT ALL WORK PHASES ON CONCRETE FACILITIES FOR CONFORMANCE TO CONTRACT SPECIFICATIONS. REINFORCING SHALL NOT BE ENCASED IN CONCRETE WITHOUT PRIOR CITY INSPECTION. LIKEWISE, CONCRETE SHALL NOT BE COVERED WITH EARTH PRIOR TO CITY INSPECTION.
- CONCRETE VAULTS AND BOXES MAY BE PURCHASED FROM A PRECAST MANUFACTURER OR CONTRACTOR MAY CONSTRUCT THE STRUCTURES IF STRUCTURAL CALCULATIONS AND DESIGN IS APPROVED BY THE CITY AND THE ENGINEER.
- ALL STEEL PIPE AND FITTINGS SHALL BE FURNISHED WITH A SHOP APPLIED HIGH SOLIDS EPOXY COATING ON THE INTERIOR AND EXTERIOR, UNLESS OTHERWISE INDICATED. ALL OTHER EXPOSED STEEL SHALL BE PAINTED WITH A PRE-TREATMENT PRIMER, AN UNDERCOAT AND A FINAL COAT OF PAINT IN ACCORDANCE WITH CONTRACT SPECIFICATIONS.
- UNLESS OTHER MATERIAL IS NOTED IN SPECIFIC DETAILS OR CIRCUMSTANCES, ALL NUTS, BOLTS, AND WASHERS USED TO SECURE UNDERGROUND FITTINGS SHALL BE STAINLESS STEEL. AFTER INSTALLATION, ALL STEEL HARDWARE SHALL BE COATED WITH A RUST PREVENTATIVE, WRAPPED WITH 8 MIL POLYETHYLENE SHEETING, AND SECURED WITH PVC TAPE.
- THRUST RESTRAINTS OR MECHANICAL RESTRAINTS TO BE PROVIDED AT ALL NON-HDPE (BUTT OR ELECTROFUSED) PIPELINE BENDS, WHETHER OR NOT SHOWN ON THE PLANS.
- ALL FITTINGS SHALL CARRY THE SAME OR GREATER PRESSURE RATING AS THE PIPE TO WHICH THEY ARE JOINED UNLESS OTHERWISE NOTED ON THE PLANS.
- USED MATERIAL, REJECTS, MISFITS, OR SECONDS, ETC. ARE NOT ACCEPTABLE FOR USE ON THIS PROJECT.
- CONTRACTOR SHALL BE RESPONSIBLE FOR PROVIDING ADEQUATE DUST CONTROL AT ALL TIMES TO THE SATISFACTION OF THE CITY INSPECTOR AND PER THE ENVIRONMENTAL DOCUMENTS APPENDED TO THESE CONTRACT DOCUMENTS.
- CONTRACTOR SHALL TAKE CARE TO PROTECT EXISTING TREES IN PLACE DURING CONSTRUCTION WORK. WHERE TRENCHING IS REQUIRED WITHIN THE DRIPLINE OF EXISTING TREES NOTE OTHERWISE SLATED FOR REMOVAL AS PART OF THIS PROJECT, THE CONTRACTOR SHALL NOTIFY THE CITY IF ROOTS LARGER THAN 4-INCHES IN DIAMETER ARE BOTH ENCOUNTERED AND SUBJECT TO DAMAGE FROM TRENCHING OPERATIONS. IN SUCH CASES THE CONTRACTOR MAY BE REQUIRED TO HAND-DIG TO MINIMIZE DAMAGE TO THE ROOT(S) AND THUS THE TREE'S INTEGRITY. ADDITIONALLY, THE CITY MAY ELECT TO REQUIRE SUCH HAND-DIGGING BE PERFORMED UNDER THE DIRECT SUPERVISION OF A CERTIFIED ARBORIST, AT THE CITY'S EXPENSE.
- THE CONTRACTOR SHALL PROTECT ALL EXISTING IMPROVEMENTS NOT DESIGNATED FOR REMOVAL AND SHALL RESTORE DAMAGED OR TEMPORARILY RELOCATED IMPROVEMENTS TO A CONDITION EQUAL TO OR BETTER THAN THEY WERE PRIOR TO SUCH DAMAGE OR TEMPORARY RELOCATION.
- SETTLEMENT OF TRENCH PAVEMENT, INCLUDING ASPHALT RESURFACING, ASSOCIATED WITH THE WORK OCCURRING WITHIN A PERIOD OF ONE YEAR AFTER COMPLETION OF THE WORK OCCURRING WITHIN A PERIOD OF ONE YEAR AFTER COMPLETION OF THE WORK SHALL BE REPAVED AND RESURFACED AT THE CONTRACTOR'S OWN EXPENSE. THIS WORK IS TO BE TO THE SATISFACTION OF THE ENGINEER.
- CONTRACTOR SHALL PERFORM FINAL SWEEPING AND CLEANUP OF ALL STREETS AND SIDEWALKS AFFECTED BY THE CONSTRUCTION UPON COMPLETION OF CONSTRUCTION. THE CONTRACTOR IS NOT ALLOWED TO USE WATER TO CLEAN THE STREET PAVEMENT SURFACE.
- CONTRACTOR SHALL PLAN HIS WORK IN CONFORMANCE WITH THE VARIOUS RESTRICTIONS AND REQUIREMENTS CONTAINED IN THE APPENDICES OF THE SPECIFICATIONS.

- CONTRACTOR TO COMPLY WITH THE YUBA COUNTY DEPARTMENT OF PUBLIC WORKS ENCROACHMENT PERMIT GENERAL PROVISIONS AT ALL TIMES.
- CONTRACTOR SHALL HAVE APPROVED PLANS IN HIS POSSESSION AND SHALL SCHEDULE A PRE-CONSTRUCTION MEETING PRIOR TO CONSTRUCTION. PRE-CONSTRUCTION MEETING SHALL INCLUDE REPRESENTATIVES FROM CITY OF WHEATLAND, YUBA COUNTY, PACIFIC GAS AND ELECTRIC, KINDER MORGAN, AND UNION PACIFIC RAILROAD.
- TO SCHEDULE A PUBLIC WORKS INSPECTION IN CITY RIGHT-OF-WAY, CALL (530) 633-8192 AT LEAST TWO WORKING DAYS PRIOR TO INSPECTION, EXCLUDING WEEKENDS AND HOLIDAYS.
- CONTRACTOR SHALL NOTIFY THE DEPARTMENT OF WATER RESOURCES (CENTRAL VALLEY FLOOD PROTECTION BOARD) IN ACCORDANCE WITH THE CVFPB PERMIT BEFORE CONSTRUCTION BEGINS AT BEST SLOUGH OR DRY CREEK.

**UPRR NOTES**

- PRIOR TO CONSTRUCTION ACTIVITY, THE CONTRACTOR WILL BE REQUIRED TO SUBMIT A MONITORING PLAN TO UPRR TO MEASURE ANY TRACK AND/OR GROUND DISPLACEMENT. THE MONITORING PLAN SHALL BE IN COMPLIANCE WITH THE UPRR GUIDELINES WHICH CAN BE FOUND AT [HTTPS://WWW.UP.COM/REAL\\_ESTATE/INDEX.HTM](https://www.up.com/REAL_ESTATE/INDEX.HTM)
- THE MONITORING PLAN SHALL INCLUDE PROCEDURES, MONITORING FREQUENCY, REPORTING METHODS AND CONTINGENCY PLANS. THE PLAN SHALL IDENTIFY THE SENSOR/TARGET LAYOUT FOR EACH CROSSING LOCATION. EACH CROSSING LOCATION SHALL SPECIFY THE TRACK DEFLECTION THRESHOLDS AND IDENTIFY THE CRITERIA TO INITIATE THE CONTINGENCY PLAN. UPON COMMENCEMENT OF CONSTRUCTION ACTIVITY, MONITORING SHALL BE CONTINUOUS 24 HOUR, 7 DAY A WEEK UNTIL 7 DAYS AFTER INSTALLATION IS COMPLETE.
- CONTINGENCY PLAN SHALL PROVIDE PROCEDURES TO PREVENT THE LOSS OF SOILS WITHIN THE SUBGRADE SUPPORT SECTION BELOW THE TRACK. CONTINGENCY PLAN SHALL ALSO INCLUDE PROCEDURES FOR STOPPAGE OF THE BORE, PRESSURE GROUTING VOIDS, MODIFYING INSTALLATION METHODS/PROCEDURES, BULKHEADING THE FACE OF THE BORE, ABANDONING THE BASING WITH GROUT FILL, AND ALL OTHER APPLICABLE PROCEDURES
- INSTALLATION SHALL BE PROGRESSED CONTINUOUSLY THROUGH ZONE A.
- UPRR REQUIRES THE CONTRACTOR TO PROVIDE TRACK MONITORING, CONSTRUCTION OBSERVATION AND FLAGGING. THESE ACTIVITIES CAN BE COORDINATED DIRECTLY THROUGH: RAILPROS FIELD SERVICES  
EMAIL: RP.UTILITY@RAILPROS.COM  
PHONE: (682) 223- 5271

**TRAFFIC CONTROL NOTES**

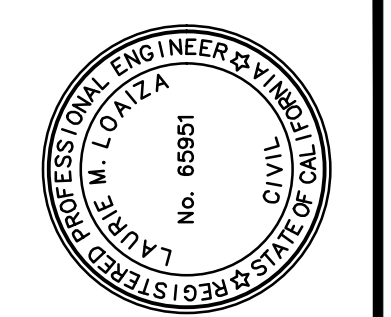
- THE CONTRACTOR SHALL MAINTAIN ALL TRAFFIC CONTROL AND PEDESTRIAN USE DURING CONSTRUCTION IN ACCORDANCE WITH THE LATEST MUTCD. PEDESTRIAN TRAFFIC SHALL ALSO CONFORM TO THE REQUIREMENTS OF THE AMERICAN DISABILITIES ACT (ADA) AND SHALL ACCOMMODATE PEDESTRIAN TRAFFIC THROUGH OR AROUND THE WORK ZONES. THE CONTRACTOR SHALL PRACTICE SAFETY AT ALL TIMES AND SHALL FURNISH, ERECT, AND MAINTAIN SUCH FENCES, BARRICADES, LIGHTS AND SIGNS NECESSARY TO GIVE ADEQUATE PROTECTION TO THE PUBLIC AT ALL TIMES. TEMPORARY TRAFFIC CONTROL SHALL BE REVIEWED BY THE COUNTY AND CITY.
- SIGNAGE SHALL BE REMOVED OR COVERED WHEN NOT REQUIRED.

**EXISTING UTILITY NOTES**

- CONTRACTOR SHALL CALL "UNDERGROUND SERVICE ALERT" AT (800) 642-2444 AT LEAST ONE (1) WEEK PRIOR TO START OF CONSTRUCTION FOR LOCATING UNDERGROUND UTILITIES.
- CONTRACTOR WILL BE RESPONSIBLE FOR THE REPAIR OF DAMAGED EXISTING UTILITIES AND FACILITIES AS A RESULT OF CONSTRUCTION WORK, AT CONTRACTOR'S COST.
- OVERHEAD UTILITIES ARE SHOWN WHERE KNOWN HEREIN. CONTRACTOR TO TAKE CARE TO IDENTIFY AND PROTECT DURING CONSTRUCTION.
- EXISTING UTILITY SIZES, LOCATIONS, AND MATERIALS SHOWN HEREIN ARE BASED ON TOPOGRAPHICAL AND FIELD SURVEY, UTILITY MAPS, AND/OR RECORD DRAWINGS. FIELD CONDITIONS MAY VARY. THE LOCATIONS AND/OR ELEVATIONS OF UNDERGROUND UTILITIES AND STRUCTURES SHOWN ON THE PLANS ARE APPROXIMATE ONLY. THE CONTRACTOR SHALL CONTACT UNDERGROUND SERVICE ALERT (USA) AT 811 OR (800) 422-4133 AT LEAST FOUR WORKING DAYS BEFORE EXCAVATING. THE CONTRACTOR SHALL BE RESPONSIBLE FOR PROTECTING THE EXISTING UTILITIES IN ACCORDANCE WITH THE SPECIFICATIONS.
- EXISTING UNDERGROUND UTILITIES AND STRUCTURES HAVE BEEN LOCATED FROM EVIDENCE ON THE SURFACE OF THE SITE AND FROM AVAILABLE RECORDS. BEFORE COMMENCING CONSTRUCTION, IT SHALL BE THE CONTRACTOR'S RESPONSIBILITY TO VERIFY THE LOCATION OF ALL EXISTING FACILITIES WITHIN THE CONSTRUCTION AREA. THE CONTRACTOR SHALL EXPOSE BURIED STRUCTURES AND UTILITIES AS NEEDED TO VERIFY LOCATIONS AND ELEVATIONS. TAKE DUE PRECAUTIONARY MEASURES TO PROTECT THE UTILITY LINES SHOWN AND ANY OTHER LINES NOT OF RECORD OR NOT SHOWN ON THESE PLANS.
- THE CONTRACTOR SHALL NOTE THAT EXISTING UTILITY SERVICES ARE NOT ALL SHOWN ON THE PLANS. IF SHOWN ON THE PLANS, THE CITY ASSUMES NO RESPONSIBILITY FOR THE ACCURACY OR COMPLETENESS OF SUCH MATERIAL OR INFORMATION. CABLE TV LINES, IF PRESENT, ARE SOMETIMES LOCATED IN COMMON TRENCHES WITH OTHER UNDERGROUND UTILITIES. THE CONTRACTOR SHALL INCLUDE THESE CONSIDERATIONS IN HIS ESTIMATE OF WORK.
- THE CONTRACTOR SHALL BE RESPONSIBLE FOR ANY DAMAGES TO CITY OR OTHER UTILITIES CAUSED BY HIS OPERATIONS.
- CONTRACTOR SHALL WORK WITH PG&E TO LOCATE ALL PG&E FACILITIES. AT PG&E'S OPTION, PG&E MAY REQUIRE A PG&E SPECIAL INSPECTOR OBSERVE ANY WORK WITHIN 3- FEET OF ANY EXISTING PG&E FACILITY. CONTRACTOR SHALL SCHEDULE WORK ACCORDINGLY.
- NO MECHANICAL EQUIPMENT SHALL BE USED WITHIN TWO (2) FEET OF PG&E GAS TRANSMISSION LINES.
- EXCAVATION IN THE VICINITY OF PG&E GAS FACILITIES SHALL FOLLOW PG&E UTILITY PROCEDURE TD-4412P-05 "EXCAVATION FOR DAMAGE PREVENTION".
- KINDER MORGAN PETROLEUM FACILITIES EXIST WITHIN THE PROJECT LIMITS. FOR ALL KINDER MORGAN CROSSINGS, A TWO FOOT MINIMUM CLEARANCE MUST BE MAINTAINED.
- ONLY KINDER MORGAN REPRESENTATIVES CAN PROBE KINDER MORGAN PIPELINES. A QUALIFIED KINDER MORGAN DAMAGE PREVENTION INSPECTOR SHALL MONITOR ALL CONSTRUCTION EXCAVATION/ACTIVITY WITHIN 25 FEET OF KINDER MORGAN FACILITIES, OR AS DETERMINED BY KINDER MORGAN PERSONNEL AND PROCEDURE.
- CONTACT LIST:  
AT&T - LEE NIETO (916) 505-7308  
CITY OF WHEATLAND - YUJA HILL - (530) 633-8192  
COMCAST - GENERAL (855) 439-8606  
KINDER MORGAN - GENERAL (800) 276-9927  
PG&E - GENERAL (800) 743-5000  
SPRINT - RUSSELL MIX (650) 375-2003 OR (650) 533-3438  
UPRR - KRIS JONES - KJONES@UP.COM  
VERIZON - GENERAL (800) 922-0204  
CALTRANS - GENERAL (916) 654-2852  
YUBA COUNTY - GENERAL (530) 749-5470  
LUMEN - GENERAL (866) 642-0444  
USAF - MIRANDA BELL - (530) 634-0675  
MIRANDA.BELL.1@US.AF.MIL

**FOR CONSTRUCTION**  
DATE: 10/10/2025

REVISIONS			
MARK	DESCRIPTION	DATE	APPD
1			
2			
3			
4			
5			



PREPARED UNDER THE DIRECTION OF  
*Laurie M. Loaiza*  
LAURIE M. LOAIZA, RCE 65951 DATE 10/10/2025  
DESIGNED BY LML/ERG  
DRAWN BY ERG  
REVIEWED BY DHS/LML

**DCCM**  
Coastland | DCCM  
11641 Blocker Dr, Ste 170  
Auburn, CA 95603  
530.885.9929 | coastland.dccm.com

CALIFORNIA  
WHEATLAND REGIONAL SEWER PIPELINE PROJECT  
CITY OF WHEATLAND  
**GENERAL NOTES - 1**

PROJECT NUMBER 77-4508
DATE: 10/10/2025
DRAWING NUMBER <b>G.03</b>
SHEET NO: 3 OF 142

FOR REDUCED PLANS, THE ORIGINAL SCALE IS IN INCHES  
3  
2  
1  
0  
Path: T:\Civil\_3D\Projects\774508 Wheatland Regional Sewer\dwg\774508 Title Sheet.dwg Layout Name: GENERAL NOTES-1 Plot Date: Oct 16, 2025 at 08:57 am

MITIGATION MEASURES

4-2-1(a) HEAVY-DUTY OFF-ROAD VEHICLES (50 HORSEPOWER OR MORE) TO BE USED IN THE CONSTRUCTION PROJECT, INCLUDING OWNED, LEASED, AND SUBCONTRACTOR VEHICLES, SHALL ACHIEVE A PROJECT-WIDE FLEET AVERAGE NOx REDUCTION OF 42 PERCENT COMPARED TO THE YEAR 2023 CARB FLEET AVERAGE. THE 42 HEAVY-DUTY OFF-ROAD VEHICLES (50 HORSEPOWER OR MORE) TO BE USED IN THE CONSTRUCTION PROJECT, INCLUDING OWNED, LEASED, AND SUBCONTRACTOR VEHICLES, SHALL ACHIEVE A PROJECT-WIDE FLEET AVERAGE NOx REDUCTION OF 42 PERCENT COMPARED TO THE YEAR 2023 CARB FLEET AVERAGE. THE 42 PERCENT NOx REDUCTION MAY BE ACHIEVED BY REQUIRING A COMBINATION OF ENGINE TIER 3 OR TIER 4 OFF-ROAD CONSTRUCTION EQUIPMENT OR THE USE OF HYBRID, ELECTRIC, OR ALTERNATIVELY FUELED EQUIPMENT. FOR INSTANCE, THE EMISSIONS PRESENTED IN TABLE 4.2-10 WERE ACHIEVED BY REQUIRING ALL ON-ROAD HEAVY-DUTY HAUL TRUCKS TO BE MODEL YEAR 2010 OR NEWER, AND ALL OFF-ROAD CONSTRUCTION EQUIPMENT USED FOR GRUBBING/LAND CLEARING AND GRADING/EXCAVATION SHALL BE ENGINE TIER 4. OTHER ACCEPTABLE OPTIONS FOR REDUCING EMISSIONS MAY INCLUDE THE USE OF LATE MODEL ENGINES, LOW-EMISSION DIESEL PRODUCTS, ALTERNATIVE FUELS, ENGINE RETROFIT TECHNOLOGY, AFTER-TREATMENT PRODUCTS, AND/OR OTHER OPTIONS AS THEY BECOME AVAILABLE. THE FOLLOWING LINK SHALL BE USED TO CALCULATE COMPLIANCE WITH THIS CONDITION: HTTP://WWW.AIRQUALITY.ORG/BUSINESSES/CEQA-LAND-USE-PLANNING/MITIGATION (CLICK ON THE CURRENT "CONSTRUCTION MITIGATION TOOL" SPREADSHEET UNDER STEP 1). THE CONSTRUCTION MITIGATION TOOL SPREADSHEET SHALL BE SUBMITTED TO THE CITY OF WHEATLAND COMMUNITY DEVELOPMENT DEPARTMENT FOR REVIEW AND VERIFICATION IN CONJUNCTION WITH GRADING PLANS.

PORTABLE EQUIPMENT OVER 50 HORSEPOWER MUST HAVE EITHER A VALID DISTRICT PERMIT TO OPERATE (PTO) OR A VALID STATEWIDE PORTABLE EQUIPMENT REGISTRATION PROGRAM (PERP) PLACARD AND STICKER ISSUED BY CARB. CONFORMANCE WITH THE FOREGOING REQUIREMENTS SHALL BE INCLUDED AS NOTES AND BE CONFIRMED THROUGH REVIEW AND APPROVAL OF GRADING PLANS BY THE CITY OF WHEATLAND COMMUNITY DEVELOPMENT DEPARTMENT.

4.2-6 PRIOR TO APPROVAL OF PROJECT IMPROVEMENT PLANS, PROOF OF COMPLIANCE WITH THE FOLLOWING SUSTAINABILITY MEASURES LISTED IN THE CITY CAP'S SUSTAINABILITY CHECKLIST SHALL BE SUBMITTED TO THE CITY OF WHEATLAND COMMUNITY DEVELOPMENT DEPARTMENT FOR REVIEW AND APPROVAL:
• INCLUDE ELECTRIC VEHICLE CHARGING INFRASTRUCTURE AND PARKING SPACES AT THE PUBLIC WORKS CORPORATION YARD AS REQUIRED BY STATE OR CITY STANDARDS; AND
• LANDSCAPING AT THE PUMP STATION 1 AND 3 SITES SHALL MEET THE CITY OR STATE'S REQUIREMENTS FOR WATER EFFICIENT LANDSCAPING.

4.3-1(a) IF THE FINAL PIPELINE ALIGNMENT PASSES THROUGH PORTIONS OF THE STUDY AREA THAT WERE INACCESSIBLE DURING THE MAY 2022 SPECIAL-STATUS PLANT SURVEY, PRIOR TO THE COMMENCEMENT OF CONSTRUCTION ACTIVITIES, PERMISSION SHALL BE OBTAINED TO ACCESS THE AREAS THAT COULD BE AFFECTED DURING PROJECT CONSTRUCTION AND A QUALIFIED BIOLOGIST SHALL SURVEY SUCH AREAS. THE RESULTS OF THE SPECIAL-STATUS PLANT SURVEYS SHALL BE SUBMITTED FOR REVIEW AND APPROVAL TO THE CITY OF WHEATLAND COMMUNITY DEVELOPMENT DEPARTMENT. IF SPECIAL-STATUS PLANT SPECIES ARE NOT FOUND, FURTHER MITIGATION SHALL NOT BE REQUIRED.

IF ANY SPECIAL-STATUS PLANTS ARE LOCATED DURING THE FOREGOING SURVEYS, THE APPROPRIATE AGENCY (I.E., CDFW AND/OR USFWS, DEPENDING ON THE SPECIES) SHALL BE CONSULTED TO DEVELOP APPROPRIATE MITIGATION FOR THE PROPOSED PROJECT FOR EXPECTED IMPACTS. IF SPECIAL-STATUS PLANTS WOULD BE IMPACTED, AS DETERMINED BY THE QUALIFIED BIOLOGIST, A MITIGATION PLAN SHALL BE DEVELOPED IN COORDINATION WITH THE APPROPRIATE AGENCY AND SUBMITTED FOR REVIEW AND APPROVAL TO THE CITY OF WHEATLAND COMMUNITY DEVELOPMENT DEPARTMENT. MITIGATION SHALL INCLUDE THAT IF SPECIAL-STATUS PERENNIAL SPECIES ARE FOUND WITHIN THE FINAL PIPELINE ALIGNMENT, THE PLANTS SHALL BE DUG UP AND TRANSPLANTED INTO A SUITABLE AVOIDED AREA ON-SITE PRIOR TO CONSTRUCTION. IF THE PLANT FOUND IS AN ANNUAL, SUCH AS DWARF DOWNINGIA, THEN MITIGATION SHALL CONSIST OF COLLECTING SEED-BEARING SOIL AND SPREADING IT INTO A SUITABLE CONSTRUCTED WETLAND AT A MITIGATION SITE. MITIGATION FOR THE TRANSPLANTATION AND/OR ESTABLISHMENT OF RARE PLANTS SHALL RESULT IN NO NET LOSS OF INDIVIDUAL PLANTS AFTER A FIVE-YEAR MONITORING PERIOD.

4.3-1(b) IF PROJECT CONSTRUCTION DOES NOT COMMENCE PRIOR TO THE FIRST DAY OF SPRING OF 2024 (MARCH 19, 2024), A NEW ROUND OF SPECIAL-STATUS PLANT SURVEYS SHALL BE CONDUCTED BY A QUALIFIED BIOLOGIST IN AREAS PROPOSED FOR GROUND DISTURBANCE PRIOR TO COMMENCEMENT OF CONSTRUCTION. IF SPECIAL-STATUS PLANT SPECIES ARE NOT FOUND, FURTHER MITIGATION SHALL NOT BE REQUIRED. IF SPECIAL-STATUS PERENNIAL SPECIES ARE FOUND WITHIN THE PROPOSED IMPACT AREA, THE PLANTS SHALL BE DUG UP AND TRANSPLANTED INTO A SUITABLE AVOIDED AREA ON-SITE PRIOR TO CONSTRUCTION. IF THE PLANT FOUND IS AN ANNUAL, SUCH AS DWARF DOWNINGIA, THEN MITIGATION SHALL CONSIST OF COLLECTING SEED-BEARING SOIL AND SPREADING IT INTO A SUITABLE CONSTRUCTED WETLAND AT A MITIGATION SITE. IF SPECIAL-STATUS PLANTS WOULD BE IMPACTED, AS DETERMINED BY THE QUALIFIED BIOLOGIST, A MITIGATION PLAN SHALL BE DEVELOPED AND SUBMITTED FOR REVIEW AND APPROVAL TO THE CITY OF WHEATLAND COMMUNITY DEVELOPMENT DEPARTMENT. MITIGATION FOR THE TRANSPLANTATION AND/OR ESTABLISHMENT OF RARE PLANTS SHALL RESULT IN NO NET LOSS OF INDIVIDUAL PLANTS AFTER A FIVE-YEAR MONITORING PERIOD.

4.3-2 PRIOR TO THE COMMENCEMENT OF CONSTRUCTION ACTIVITIES, A DELINEATION OF ALL POTENTIAL VERNAL POOL BRANCHIOPOD HABITAT AND SURVEYS OF ANY HABITAT SHALL BE PERFORMED BY A QUALIFIED BIOLOGIST IN ACCORDANCE WITH CURRENT USFWS PROTOCOL. FOR THOSE AREAS OF POTENTIAL HABITAT THAT ARE DETERMINED BY THE SURVEYS NOT TO BE OCCUPIED BY FEDERALLY LISTED VERNAL POOL BRANCHIOPODS, FURTHER MITIGATION SHALL NOT BE REQUIRED. IF FEDERALLY LISTED VERNAL POOL BRANCHIOPODS ARE FOUND DURING SURVEYS, REMOVAL OF THE SPECIES' HABITAT SHALL BE MITIGATED THROUGH THE PRESERVATION OF VERNAL POOL BRANCHIOPOD HABITAT AT USFWS-APPROVED RATIOS AT A

USFWS-APPROVED MITIGATION BANK. ALTERNATIVELY, ALL POTENTIAL VERNAL POOL BRANCHIOPOD HABITAT MAY BE ASSUMED TO BE OCCUPIED AND MITIGATION SHALL BE AS DESCRIBED ABOVE. THE RESULTS OF THE DELINEATION OF ALL POTENTIAL VERNAL POOL BRANCHIOPOD HABITAT AND SURVEYS OF ANY HABITAT SHALL BE SUBMITTED FOR REVIEW AND APPROVAL TO THE CITY OF WHEATLAND COMMUNITY DEVELOPMENT DEPARTMENT.

4.3-5(b) PRIOR TO THE COMMENCEMENT OF CONSTRUCTION ACTIVITIES, THE PROJECT CONTRACTOR SHALL DEVELOP A FRAC-OUT CONTINGENCY PLAN (CONTINGENCY PLAN). THE CONTINGENCY PLAN SHALL BE PREPARED TO ENSURE THAT PREVENTIVE AND RESPONSIVE MEASURES CAN BE IMPLEMENTED BY THE CONTRACTOR. TO MINIMIZE THE POTENTIAL FOR A FRAC-OUT, THE CONTINGENCY PLAN SHALL INCLUDE DESIGN PROTOCOLS TO BE IMPLEMENTED FOR THE PROTECTION OF SENSITIVE BIOLOGICAL RESOURCES AND DESIGN PROTOCOLS TO REQUIRE A GEOTECHNICAL ENGINEER OR QUALIFIED GEOLOGIST TO MAKE RECOMMENDATIONS REGARDING THE SUITABILITY OF THE FORMATIONS TO BE BORED TO MINIMIZE THE POTENTIAL FOR FRAC-OUT CONDITIONS. THE CONTINGENCY PLAN SHALL BE SUBMITTED FOR REVIEW AND APPROVAL TO THE CITY OF WHEATLAND COMMUNITY DEVELOPMENT DEPARTMENT. SEWER PIPELINE ALIGNMENT, PUMP STATIONS, AND CORPORATION YARD.

4.3-6(a) PRIOR TO THE COMMENCEMENT OF CONSTRUCTION ACTIVITIES, A QUALIFIED BIOLOGIST SHALL BE RETAINED TO SURVEY ALL SUITABLE AQUATIC HABITAT FOR WESTERN SPADEFOOT WITHIN THE STUDY AREA (INCLUDING FEATURES PROPOSED FOR AVOIDANCE) BY SAMPLING THE FEATURES THOROUGHLY WITH DIPNETS DURING MARCH OR EARLY APRIL, WHEN SPADEFOOT TADPOLES WOULD BE PRESENT. IN ADDITION, ONE NOCTURNAL ACOUSTIC SURVEY OF ALL AREAS WITHIN 300 FEET OF SUITABLE AQUATIC HABITAT SHALL BE CONDUCTED. ACOUSTIC SURVEYS SHALL CONSIST OF WALKING THROUGH THE AREA AND LISTENING FOR THE DISTINCTIVE SNORE-LIKE CALL OF THE SPECIES. TIMING AND METHODOLOGY FOR THE AQUATIC AND ACOUSTIC SURVEYS SHALL BE BASED ON THOSE DESCRIBED IN DISTRIBUTION OF THE WESTERN SPADEFOOT (SPEA HAMMONDII) IN THE NORTHERN SACRAMENTO VALLEY OF CALIFORNIA, WITH COMMENTS ON STATUS AND SURVEY METHODOLOGY. IF BOTH THE AQUATIC SURVEY AND THE NOCTURNAL ACOUSTIC SURVEY ARE NEGATIVE, FURTHER MITIGATION SHALL NOT BE NECESSARY. THE RESULTS OF THE SURVEYS SHALL BE SUBMITTED FOR REVIEW AND APPROVAL TO THE CITY OF WHEATLAND COMMUNITY DEVELOPMENT DEPARTMENT.

4.3-6(b) IF WESTERN SPADEFOOT ARE OBSERVED WITHIN AQUATIC HABITAT PROPOSED FOR IMPACT, THE TADPOLES SHALL BE CAPTURED BY A QUALIFIED BIOLOGIST AND RELOCATED EITHER TO AQUATIC HABITAT TO BE AVOIDED ON-SITE (AND IMPLEMENT THE FENCING REQUIREMENT OUTLINED BELOW), OR TO AN OFF-SITE OPEN SPACE PRESERVE WITH SUITABLE HABITAT IN THE VICINITY OF THE STUDY AREA. IF WESTERN SPADEFOOT ARE OBSERVED WITHIN AQUATIC HABITATS PROPOSED FOR AVOIDANCE, THEN A KEYED-IN SILT FENCE SHALL BE INSTALLED ALONG THE EDGE OF THE PROPOSED IMPACT AREA WITHIN 300 FEET OF THE OCCUPIED AQUATIC HABITAT TO PREVENT METAMORPHOSING INDIVIDUALS FROM DISPERSING INTO THE CONSTRUCTION AREA. PROOF OF COMPLIANCE WITH THE ABOVE REQUIREMENTS SHALL BE PREPARED BY THE QUALIFIED BIOLOGIST AND SUBMITTED FOR REVIEW AND APPROVAL TO THE CITY OF WHEATLAND COMMUNITY DEVELOPMENT DEPARTMENT. SEWER PIPELINE ALIGNMENT, PUMP STATIONS, AND CORPORATION YARD.

4.3-7(a) PRIOR TO THE COMMENCEMENT OF CONSTRUCTION ACTIVITIES THAT OVERLAP WITH BEST SLOUGH, DRY CREEK, DITCHES THAT PROVIDE SUITABLE HABITAT, AND/OR UPLAND AREAS WITHIN 150 FEET OF SUCH AQUATIC RESOURCES, A WESTERN POND TURTLE SURVEY SHALL BE CONDUCTED BY A QUALIFIED BIOLOGIST, WITHIN 48 HOURS PRIOR TO THE START OF CONSTRUCTION. IF WESTERN POND TURTLES OR NESTS ARE NOT FOUND, FURTHER MITIGATION SHALL NOT BE NECESSARY. THE RESULTS OF THE SURVEY SHALL BE SUBMITTED FOR REVIEW AND APPROVAL TO THE CITY OF WHEATLAND COMMUNITY DEVELOPMENT DEPARTMENT.

4.3-7(b) IF A WESTERN POND TURTLE IS OBSERVED WITHIN THE PROPOSED AREA OF IMPACT, A QUALIFIED BIOLOGIST SHALL RELOCATE THE INDIVIDUAL TO HABITAT OF EQUIVALENT OR GREATER VALUE (E.G., RIPARIAN WOODLANDS ADJACENT TO A PERENNIAL CREEK OR INTERMITTENT DRAINAGE) OUTSIDE OF THE PROPOSED IMPACT AREA PRIOR TO CONSTRUCTION. IF A WESTERN POND TURTLE NEST IS OBSERVED WITHIN THE PROPOSED AREA OF IMPACT, THE NEST SHALL BE FENCED OFF AND AVOIDED UNTIL THE EGGS HATCH. THE EXCLUSION FENCING SHALL BE PLACED 25 FEET, AT A MINIMUM, FROM THE NEST. A QUALIFIED BIOLOGIST SHALL MONITOR THE NEST DAILY DURING CONSTRUCTION TO ENSURE THAT HATCHLINGS DO NOT DISPERSE INTO THE CONSTRUCTION AREA. RELOCATION OF HATCHLINGS SHALL OCCUR AS STIPULATED ABOVE, IF NECESSARY. A REPORT DETAILING COMPLIANCE WITH THE PROVISIONS SET FORTH HEREIN SHALL BE PREPARED BY THE QUALIFIED BIOLOGIST AND SUBMITTED FOR REVIEW AND APPROVAL TO THE CITY OF WHEATLAND COMMUNITY DEVELOPMENT DEPARTMENT.

4.3-8(a) PRIOR TO THE COMMENCEMENT OF CONSTRUCTION, A QUALIFIED BIOLOGIST SHALL BE RETAINED TO CONDUCT A FIELD INVESTIGATION TO DELINEATE GIANT GARTER SNAKE AQUATIC HABITAT WITHIN THE PROJECT FOOTPRINT AND ADJACENT AREAS WITHIN 300 FEET OF THE PROJECT FOOTPRINT. GIANT GARTER SNAKE AQUATIC HABITAT INCLUDES AGRICULTURAL DITCHES. THE RESULTS OF THE GIANT GARTER SNAKE AQUATIC HABITAT DELINEATION SHALL BE SUBMITTED FOR REVIEW AND APPROVAL TO THE CITY OF WHEATLAND COMMUNITY DEVELOPMENT DEPARTMENT.

4.3-8(b) DURING CONSTRUCTION ACTIVITIES ASSOCIATED WITH THE PROPOSED PROJECT, THE PROJECT CONTRACTOR SHALL ENSURE THAT THE FOLLOWING MEASURES ARE IMPLEMENTED:

- DURING CONSTRUCTION, A QUALIFIED BIOLOGIST EXPERIENCED WITH GIANT GARTER SNAKE IDENTIFICATION AND BEHAVIOR SHALL BE ON-SITE DAILY WHEN CONSTRUCTION ACTIVITIES WITHIN AQUATIC HABITAT OR WITHIN 300 FEET OF AQUATIC HABITAT ARE TAKING PLACE. THE BIOLOGIST SHALL INSPECT THE PROJECT SITE DAILY FOR GIANT GARTER SNAKE PRIOR TO CONSTRUCTION ACTIVITIES. THE BIOLOGIST SHALL ALSO CONDUCT ENVIRONMENTAL AWARENESS TRAINING FOR ALL CONSTRUCTION PERSONNEL WORKING ON THE PROJECT SITE ON REQUIRED AVOIDANCE PROCEDURES AND PROTOCOLS IF A GIANT GARTER SNAKE ENTERS AN ACTIVE CONSTRUCTION ZONE;
• ALL CONSTRUCTION ACTIVITY WITHIN GIANT GARTER SNAKE AQUATIC AND

UPLAND HABITAT IN AND AROUND THE SITE SHALL BE CONDUCTED BETWEEN MAY 1 AND OCTOBER 1, THE ACTIVE PERIOD FOR GIANT GARTER SNAKES, WHICH WOULD REDUCE DIRECT IMPACTS ON THE SPECIES BECAUSE THE SNAKES WOULD BE ACTIVE AND RESPOND TO CONSTRUCTION ACTIVITIES BY MOVING OUT OF THE WAY;

• IF CONSTRUCTION ACTIVITIES OCCUR IN GIANT GARTER SNAKE AQUATIC HABITAT (I.E., IRRIGATION DITCHES OR OTHER HABITAT IDENTIFIED DURING THE DELINEATION OF HABITAT), AQUATIC HABITAT SHALL BE DEWATERED AND THEN REMAIN DRY AND ABSENT OF AQUATIC PREY (E.G., FISH AND TADPOLES) FOR 15 DAYS PRIOR TO INITIATION OF CONSTRUCTION ACTIVITIES. AFTER AQUATIC HABITAT HAS BEEN DEWATERED 15 DAYS PRIOR TO CONSTRUCTION ACTIVITIES, EXCLUSION FENCING SHALL BE INSTALLED, EXTENDING A MINIMUM OF 300 FEET INTO ADJACENT UPLANDS TO ISOLATE BOTH THE AQUATIC AND ADJACENT UPLAND HABITAT. EXCLUSIONARY FENCING SHALL BE ERECTED 36 INCHES ABOVE GROUND AND BURIED AT LEAST SIX INCHES BELOW THE GROUND TO PREVENT SNAKES FROM ATTEMPTING TO MOVE UNDER THE FENCE INTO THE CONSTRUCTION AREA. IN ADDITION, HIGH-VISIBILITY FENCING SHALL BE ERECTED TO IDENTIFY THE CONSTRUCTION LIMITS AND TO PROTECT ADJACENT HABITAT FROM ENCRoACHMENT OF PERSONNEL AND EQUIPMENT. EXCLUSIONARY FENCING AND HIGH-VISIBILITY FENCING SHALL BE MADE FROM MATERIAL THAT WILL NOT CAUSE ENTANGLEMENT (E.G., SILT FENCING AND STAKES WITH FLAGGING AND/OR POLY WIRE). GIANT GARTER SNAKE HABITAT OUTSIDE CONSTRUCTION FENCING SHALL BE AVOIDED BY ALL CONSTRUCTION PERSONNEL. THE FENCING AND THE WORK AREA SHALL BE INSPECTED BY THE QUALIFIED BIOLOGIST TO ENSURE THAT THE FENCING IS INTACT AND THAT SNAKES HAVE NOT ENTERED THE WORK AREA BEFORE THE START OF EACH WORK DAY. THE FENCING SHALL BE MAINTAINED BY THE CONTRACTOR UNTIL COMPLETION OF THE PROJECT;

• IF A GIANT GARTER SNAKE IS OBSERVED, THE BIOLOGIST SHALL NOTIFY CDFW AND USFWS IMMEDIATELY. CONSTRUCTION ACTIVITIES SHALL BE SUSPENDED IN A 100-FOOT RADIUS OF THE GIANT GARTER SNAKE UNTIL THE SNAKE LEAVES THE SITE OF ITS OWN VOLITION;
• ALL EXCAVATED STEEP-WALLED HOLES AND TRENCHES MORE THAN SIX INCHES DEEP PROXIMATE TO GIANT GARTER SNAKE HABITAT SHALL BE COVERED WITH PLYWOOD (OR SIMILAR MATERIAL) OR PROVIDED WITH ONE OR MORE ESCAPE RAMPS CONSTRUCTED OF EARTH FILL OR WOODEN PLANKS AT THE END OF EACH WORK DAY OR 30 MINUTES PRIOR TO SUNSET, WHICHEVER OCCURS FIRST. ALL STEEP-WALLED HOLES AND TRENCHES SHALL BE INSPECTED BY THE BIOLOGIST EACH MORNING TO ENSURE THAT NO WILDLIFE HAS BECOME ENTRAPPED. ALL CONSTRUCTION PIPES, CULVERTS, SIMILAR STRUCTURES, CONSTRUCTION EQUIPMENT, AND CONSTRUCTION DEBRIS LEFT OVERNIGHT WITHIN GIANT GARTER SNAKE MODELED HABITAT SHALL BE INSPECTED FOR GIANT GARTER SNAKE BY THE QUALIFIED BIOLOGIST PRIOR TO BEING MOVED; AND
• IF EROSION CONTROL MEASURES ARE IMPLEMENTED PROXIMATE TO GIANT GARTER SNAKE HABITAT, NON-ENTANGLING EROSION CONTROL MATERIAL SHALL BE USED TO REDUCE THE POTENTIAL FOR ENTRAPMENT. TIGHTLY WOVEN FIBER NETTING (MESH SIZE LESS THAN 0.25-INCH) OR SIMILAR MATERIAL SHALL BE USED TO ENSURE SNAKES ARE NOT TRAPPED (MONOFILAMENT IS PROHIBITED). COCONUT COIR MATTING AND FIBER ROLLS CONTAINING BURLAP ARE EXAMPLES OF ACCEPTABLE EROSION CONTROL MATERIALS.

4.3-9(a) WITHIN 14 DAYS PRIOR TO THE COMMENCEMENT OF CONSTRUCTION ACTIVITIES, A TARGETED BURROWING OWL NEST SURVEY SHALL BE CONDUCTED BY A QUALIFIED BIOLOGIST OF ALL ACCESSIBLE AREAS WITHIN 500 FEET OF THE PROPOSED CONSTRUCTION AREA. THE SURVEY SHALL FOLLOW CDFW GUIDELINES OUTLINED IN THE STAFF REPORT ON BURROWING OWL MITIGATION. A REPORT SUMMARIZING THE RESULTS OF THE BURROWING OWL NEST SURVEY SHALL BE SUBMITTED FOR REVIEW AND APPROVAL TO THE CITY OF WHEATLAND COMMUNITY DEVELOPMENT DEPARTMENT AND CDFW WITHIN 30 DAYS OF THE COMPLETED SURVEY. THE SURVEY REPORT SHALL BE VALID FOR ONE CONSTRUCTION SEASON. IF AN ACTIVE BURROWING OWL NEST BURROW (I.E., OCCUPIED BY MORE THAN ONE ADULT OWL AND/OR JUVENILE OWLS ARE OBSERVED) IS NOT FOUND WITHIN 250 FEET OF A CONSTRUCTION AREA, FURTHER MITIGATION SHALL NOT BE REQUIRED.

IF AN ACTIVE BURROWING OWL NEST BURROW IS FOUND WITHIN 250 FEET OF A CONSTRUCTION AREA, CONSTRUCTION SHALL NOT TAKE PLACE WITHIN 250 FEET OF THE NEST BURROW UNTIL A QUALIFIED BIOLOGIST DETERMINES THAT THE YOUNG HAVE FLEDGED OR THE NESTING ATTEMPT HAS BEEN DETERMINED TO HAVE FAILED. IF THE CITY DESIRES TO WORK WITHIN 250 FEET OF THE NEST BURROW, THE QUALIFIED BIOLOGIST SHALL BE CONSULTED TO DETERMINE IF THE NEST BUFFER CAN BE REDUCED. DURING THE NON-BREEDING SEASON (LATE SEPTEMBER THROUGH THE END OF JANUARY), A SURVEY FOR BURROWS OR DEBRIS THAT REPRESENT SUITABLE NESTING HABITAT FOR BURROWING OWLS MAY BE CONDUCTED WITHIN AREAS OF PROPOSED GROUND DISTURBANCE, ANY BURROWING OWLS OBSERVED MAY BE EXCLUDED, AND BURROWS MAY BE COLLAPSED OR THE DEBRIS REMOVED IN ACCORDANCE WITH THE METHODOLOGY OUTLINED BY THE CDFW.

4.3-11(a) RAPTORS: IF GROUND DISTURBANCE OR OTHER CONSTRUCTION ACTIVITIES ARE PROPOSED DURING THE NESTING SEASON (FEBRUARY 1 TO AUGUST 31), A FOCUSED SURVEY FOR NESTING RAPTORS PROTECTED UNDER THE CFCG AND MBTA SHALL BE CONDUCTED BY A QUALIFIED BIOLOGIST WITHIN 14 DAYS PRIOR TO THE BEGINNING OF CONSTRUCTION ACTIVITIES IN ORDER TO IDENTIFY ACTIVE NESTS. THE SURVEY SHALL BE CONDUCTED WITHIN THE PROPOSED CONSTRUCTION AREA AND ALL ACCESSIBLE AREAS WITHIN 0.25-MILE. A REPORT SUMMARIZING THE RESULTS OF THE SURVEY SHALL BE SUBMITTED FOR REVIEW AND APPROVAL TO THE CITY OF WHEATLAND COMMUNITY DEVELOPMENT DEPARTMENT. IF ACTIVE NESTS ARE NOT FOUND DURING THE FOCUSED SURVEY(S), ADDITIONAL MITIGATION SHALL NOT BE REQUIRED.

IF ACTIVE RAPTOR NESTS ARE FOUND WITHIN 0.25-MILE OF A CONSTRUCTION AREA, CONSTRUCTION SHALL NOT COMMENCE WITHIN 0.25-MILE OF THE NEST UNTIL A QUALIFIED BIOLOGIST DETERMINES THAT THE YOUNG HAVE FLEDGED, OR THE BIOLOGIST HAS DETERMINED THAT THE NESTING ATTEMPT HAS FAILED. IF CONSTRUCTION ACTIVITIES WITHIN 0.25-MILE OF THE NEST ARE NECESSARY, THE QUALIFIED BIOLOGIST SHALL BE CONSULTED TO DETERMINE IF THE NEST BUFFER CAN BE REDUCED. THE CITY AND QUALIFIED BIOLOGIST SHALL JOINTLY DETERMINE THE NEST AVOIDANCE BUFFER, AND WHAT (IF ANY) NEST MONITORING IS NECESSARY.

IF AN ACTIVE RAPTOR NEST IS FOUND WITHIN THE PROJECT AREA PRIOR TO CONSTRUCTION AND IS IN A TREE THAT IS PROPOSED FOR REMOVAL, THEN THE CITY SHALL IMPLEMENT ADDITIONAL MITIGATION RECOMMENDED BY A QUALIFIED BIOLOGIST BASED ON CDFW GUIDELINES AND OBTAIN ANY

REQUIRED PERMITS FROM CDFW.

4.3-11(b) SONGBIRDS: IF GROUND DISTURBANCE OR OTHER CONSTRUCTION ACTIVITIES ARE PROPOSED DURING THE NESTING SEASON (FEBRUARY 1 TO AUGUST 31), A FOCUSED SURVEY FOR BIRDS PROTECTED UNDER THE MBTA SHALL BE CONDUCTED BY A QUALIFIED BIOLOGIST WITHIN 14 DAYS PRIOR TO THE BEGINNING OF CONSTRUCTION ACTIVITIES IN ORDER TO IDENTIFY ACTIVE NESTS. THE SURVEY SHALL BE CONDUCTED WITHIN THE PROPOSED CONSTRUCTION AREA AND ALL ACCESSIBLE AREAS WITHIN 500 FEET. A REPORT SUMMARIZING THE RESULTS OF THE SURVEY SHALL BE SUBMITTED FOR REVIEW AND APPROVAL TO THE CITY OF WHEATLAND COMMUNITY DEVELOPMENT DEPARTMENT. IF ACTIVE NESTS ARE NOT FOUND DURING THE FOCUSED SURVEY(S), ADDITIONAL MITIGATION SHALL NOT BE REQUIRED.

IF ACTIVE SPECIAL-STATUS SPECIES NESTS/NESTING COLONIES ARE LOCATED DURING THE SURVEY, THE CITY SHALL WORK WITH A QUALIFIED BIOLOGIST TO DETERMINE A SUITABLE AVOIDANCE BUFFER AND THE EXTENT AND DURATION OF NEST MONITORING NEEDED. THE PERIMETER OF THE PROTECTED AREA SHALL BE INDICATED BY BRIGHT ORANGE TEMPORARY FENCING AND SIGNAGE. CONSTRUCTION ACTIVITIES AND/OR PERSONNEL SHALL NOT ENTER THE PROTECTED AREA, EXCEPT WITH APPROVAL OF THE BIOLOGIST. IF TREES CONTAINING NESTS OR BURROWS MUST BE REMOVED AS A RESULT OF PROJECT IMPLEMENTATION, REMOVAL SHALL BE COMPLETED DURING THE NONBREEDING SEASON (LATE SEPTEMBER TO JANUARY 31).

IF ACTIVE SONGBIRD NESTS ARE FOUND, A QUALIFIED BIOLOGIST SHALL ESTABLISH A 100-FOOT NON-DISTURBANCE BUFFER. THE NON-DISTURBANCE BUFFERS MAY BE REDUCED BASED ON CONSULTATION AND APPROVAL BY THE CITY. THE PERIMETER OF THE PROTECTED AREA SHALL BE INDICATED BY BRIGHT ORANGE TEMPORARY FENCING. CONSTRUCTION ACTIVITIES OR PERSONNEL SHALL NOT ENTER THE PROTECTED AREA, EXCEPT WITH APPROVAL OF THE BIOLOGIST. IF TREES CONTAINING NESTS MUST BE REMOVED AS A RESULT OF PROJECT IMPLEMENTATION, REMOVAL SHALL BE COMPLETED DURING THE NONBREEDING SEASON (LATE SEPTEMBER TO JANUARY 31) OR AFTER THE ADULTS AND YOUNG ARE NOT DEPENDENT ON THE NEST SITE, AS DETERMINED BY A QUALIFIED BIOLOGIST.

4.3-12(a) IF TREE REMOVAL IS REQUIRED AS PART OF CONSTRUCTION OF THE PROPOSED SEWER PIPELINE ALIGNMENT, PUMP STATIONS, AND/OR CORPORATION YARD, WITHIN ONE YEAR PRIOR TO THE COMMENCEMENT OF CONSTRUCTION ACTIVITIES, A QUALIFIED BIOLOGIST SHALL CONDUCT A BAT HABITAT ASSESSMENT OF ALL POTENTIAL ROOSTING HABITAT FEATURES, INCLUDING TREES AND STRUCTURES WITHIN THE PROPOSED IMPACT FOOTPRINT. THE HABITAT ASSESSMENT SHALL IDENTIFY ALL POTENTIALLY SUITABLE ROOSTING HABITAT. THE RESULTS OF THE BAT HABITAT ASSESSMENT SHALL BE SUBMITTED FOR REVIEW AND APPROVAL TO THE CITY OF WHEATLAND COMMUNITY DEVELOPMENT DEPARTMENT.

4.3-12(b) IF POTENTIAL ROOSTING HABITAT IS IDENTIFIED (CAVITIES IN TREES OR POTENTIAL ROOSTS WITHIN STRUCTURES) WITHIN THE AREAS PROPOSED FOR IMPACT, THE QUALIFIED BIOLOGIST SHALL SURVEY THE POTENTIAL ROOSTING HABITAT DURING THE ACTIVE SEASON (GENERALLY APRIL THROUGH OCTOBER OR FROM JANUARY THROUGH MARCH ON DAYS WITH TEMPERATURES IN EXCESS OF 50 DEGREES FAHRENHEIT) TO DETERMINE THE PRESENCE OF ROOSTING BATS. THE SURVEYS SHALL USE METHODS THAT ARE CONSIDERED ACCEPTABLE BY CDFW AND BAT EXPERTS. METHODS MAY INCLUDE EVENING EMERGENCE SURVEYS, ACOUSTIC SURVEYS, INSPECTING POTENTIAL ROOSTING HABITAT WITH FIBEROPTIC CAMERAS, OR A COMBINATION THEREOF. THE RESULTS OF THE ROOSTING HABITAT SURVEY SHALL BE SUBMITTED FOR REVIEW AND APPROVAL TO THE CITY OF WHEATLAND COMMUNITY DEVELOPMENT DEPARTMENT.

4.3-12(c) IF ROOSTING BATS ARE IDENTIFIED WITHIN ANY OF THE TREES PLANNED FOR REMOVAL, OR IF PRESENCE IS ASSUMED, THE TREES SHALL BE REMOVED OUTSIDE OF PUP SEASON AND ONLY ON DAYS WITH TEMPERATURES IN EXCESS OF 50 DEGREES FAHRENHEIT. PUP SEASON IS GENERALLY DURING THE MONTHS OF MAY THROUGH AUGUST. TWO-STEP TREE REMOVAL SHALL BE USED UNDER THE SUPERVISION OF THE QUALIFIED BIOLOGIST. TWO-STEP TREE REMOVAL INVOLVES REMOVAL OF ALL BRANCHES OF THE TREE THAT DO NOT PROVIDE ROOSTING HABITAT ON THE FIRST DAY, AND THEN THE NEXT DAY CUTTING DOWN THE REMAINING PORTION OF THE TREE. ALL OTHER TREE REMOVAL SHALL BE CONDUCTED FROM JANUARY THROUGH MARCH ON DAYS WITH TEMPERATURES IN EXCESS OF 50 DEGREES FAHRENHEIT TO AVOID POTENTIAL IMPACTS TO FOLIAGE-ROOSTING BAT SPECIES.

IF ROOSTING BATS ARE IDENTIFIED WITHIN ANY STRUCTURES PLANNED FOR REMOVAL, A BAT EXCLUSION PLAN SHALL BE PREPARED BY A QUALIFIED BAT BIOLOGIST DESCRIBING THE METHODS TO BE USED TO HUMANELY EXCLUDE BATS PRIOR TO DISTURBANCE. EACH EXCLUSION SHALL BE SPECIFIC TO THE STRUCTURE. ALL EXCLUSIONS SHALL INVOLVE THE INSTALLATION OF ONE-WAY DOORS OR FLAPS DURING THE NON-BREEDING SEASON THAT ALLOW THE BATS TO LEAVE AND NOT RE-ENTER THE STRUCTURE. THE BAT EXCLUSION PLAN SHALL BE SUBMITTED FOR REVIEW AND APPROVAL TO CDFW AND SHALL BE IMPLEMENTED PRIOR TO THE START OF CONSTRUCTION.

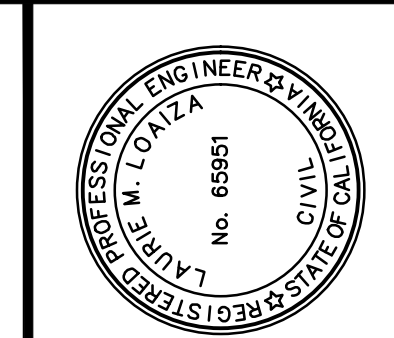
Table with 4 columns: MARK, DESCRIPTION, DATE, APPD. Contains revision tracking information.

Table with 2 columns: PROJECT NUMBER (77-4508), DATE (10/10/2025), DRAWING NUMBER (G.04), SHEET NO. (4 OF 142).



FOR REDUCED PLANS, THE ORIGINAL SCALE IS IN INCHES

Path: T:\Civil\_3D\Projects\774508 Wheatland Regional Sewer\Drawings\Sheet.dwg; Layout Name: GENERAL NOTES-2; Plot Date: Oct 10, 2025 at 03:11 pm



PREPARED UNDER THE DIRECTION OF Laurie M. Loaiza, Professional Engineer, License No. 65951

DESIGNED BY: LML/ERG, DRAWN BY: ERG, REVIEWED BY: DHS/LML

Coastland DCCM, 11641 Blocker Dr., Ste 170, Auburn, CA 95603, 530.888.9929 | coastland.dccm.com

CALIFORNIA

WHEATLAND REGIONAL SEWER PIPELINE PROJECT, CITY OF WHEATLAND, GENERAL NOTES - 2

PROJECT NUMBER 77-4508, DATE 10/10/2025, DRAWING NUMBER G.04, SHEET NO. 4 OF 142

**MITIGATION MEASURES (CONTINUED)**

4.3-14(a) IF THE FINAL SEWER PIPELINE ALIGNMENT REQUIRES DISTURBANCE OF ANY OF AREAS INACCESSIBLE DURING THE AQUATIC RESOURCES DELINEATION (ARD) CONDUCTED FOR THE BIOLOGICAL RESOURCES ASSESSMENT PREPARED FOR THE WHEATLAND REGIONAL SEWER PIPELINE ALIGNMENT PROJECT, THE CITY OF WHEATLAND SHALL OBTAIN PERMISSION TO ACCESS THE AREAS AND MAP AQUATIC RESOURCES THAT COULD BE AFFECTED DURING PROJECT CONSTRUCTION, PRIOR TO THE COMMENCEMENT OF GROUND-DISTURBING ACTIVITIES. THE CITY SHALL SUBMIT A SUPPLEMENTAL ARD REPORT AND REQUEST FOR VERIFICATION TO THE USACE FOR SUCH AREAS.

4.3-14(b) PRIOR TO THE ISSUANCE OF GRADING PERMITS, THE CITY SHALL APPLY FOR A CLEAN WATER ACT (CWA) SECTION 404 permit from the USACE. WATERS THAT WOULD BE LOST OR DISTURBED SHALL BE RESTORED, REPLACED OR REHABILITATED ON A 'NO-NET-LOSS' BASIS. HABITAT RESTORATION, REHABILITATION, AND/OR REPLACEMENT SHALL BE AT A LOCATION AND BY METHODS ACCEPTABLE TO THE USACE. THE CITY SHALL ALSO APPLY FOR A SECTION 401 WATER QUALITY CERTIFICATION FROM THE RWQCB PRIOR TO THE ISSUANCE OF GRADING PERMITS AND ADHERE TO THE CERTIFICATION CONDITIONS.

4.3-14(c) PRIOR TO THE COMMENCEMENT OF GROUND-DISTURBING ACTIVITIES, THE CITY SHALL NOTIFY CDFW PURSUANT TO SECTION 1600 OF THE CALIFORNIA FISH AND GAME CODE. THE NOTIFICATION SHALL INCLUDE A DESCRIPTION OF ALL OF THE ACTIVITIES ASSOCIATED WITH THE PROPOSED PROJECT, NOT JUST THOSE ASSOCIATED WITH THE DRAINAGES AND/OR RIPARIAN VEGETATION. IMPACTS SHALL BE OUTLINED IN THE NOTIFICATION AND ARE EXPECTED TO BE IN SUBSTANTIAL CONFORMANCE WITH THE IMPACTS TO BIOLOGICAL RESOURCES OUTLINED IN THE BIOLOGICAL RESOURCES ASSESSMENT PREPARED FOR THE WHEATLAND REGIONAL SEWER PIPELINE PROJECT BY MADRONE ECOLOGICAL CONSULTING. IMPACTS FOR EACH ACTIVITY SHALL BE BROKEN DOWN BY TEMPORARY AND PERMANENT IMPACTS. A DESCRIPTION OF THE PROPOSED MITIGATION FOR BIOLOGICAL RESOURCE IMPACTS SHALL BE OUTLINED PER ACTIVITY AND THEN BY TEMPORARY AND PERMANENT IMPACT. INFORMATION REGARDING PROJECT-SPECIFIC DRAINAGE AND HYDROLOGY CHANGES RESULTING FROM PROJECT IMPLEMENTATION SHALL BE PROVIDED, AS WELL AS A DESCRIPTION OF STORMWATER TREATMENT METHODS, MINIMIZATION AND AVOIDANCE MEASURES SHALL BE PROPOSED, AS APPROPRIATE, AND MAY INCLUDE PRECONSTRUCTION SPECIES SURVEYS AND REPORTING, PROTECTIVE FENCING AROUND AVOIDED BIOLOGICAL RESOURCES, WORKER ENVIRONMENTAL AWARENESS TRAINING, SEEDING DISTURBED AREAS ADJACENT TO OPEN SPACE AREAS WITH NATIVE SEED, AND INSTALLATION OF PROJECT-SPECIFIC STORMWATER BMPs. MITIGATION FOR IMPACTS TO VALLEY OAK WOODLAND MAY INCLUDE RESTORATION OR ENHANCEMENT OF RESOURCES ON- OR OFF-SITE, PURCHASE OF HABITAT CREDITS FROM AN AGENCY-APPROVED MITIGATION/CONSERVATION BANK OFF-SITE, WORKING WITH A LOCAL LAND TRUST TO PRESERVE LAND, OR ANY OTHER METHOD ACCEPTABLE TO CDFW. MITIGATION SHALL NOT RESULT IN A NET LOSS OF A SENSITIVE NATURAL COMMUNITY. WRITTEN VERIFICATION OF THE SECTION 1600 LSA shall be submitted to the CITY OF WHEATLAND COMMUNITY DEVELOPMENT DEPARTMENT.

4.4-1 THE FOLLOWING REQUIREMENTS SHALL BE INCLUDED THROUGH A NOTATION ON ALL PROJECT IMPROVEMENT PLANS PRIOR TO THE ISSUANCE OF GRADING PERMITS AND SHALL BE IMPLEMENTED DURING PROJECT CONSTRUCTION, TO THE SATISFACTION OF THE CITY ENGINEER:

IF A CHANGE IN THE PROPOSED ALIGNMENT OCCURS DURING CONSTRUCTION SUCH THAT THE LOCATION OF THE JASPER HOUSE COULD BE AFFECTED, ADDITIONAL WORK AT THE LOCATION, INCLUDING ARCHIVAL RESEARCH, SHALL BE WARRANTED. ADDITIONAL WORK SHALL INCLUDE METAL DETECTING FOLLOWED BY EXCAVATION OF SHOVEL TEST PITS OR STANDARD ARCHEOLOGICAL UNITS WHERE POSITIVE 'HITS' ARE IDENTIFIED AND WHERE POSSIBLE FEATURES ARE FOUND. IF SUBGRADE HISTORICAL DEPOSITS ARE DISCOVERED, A QUALIFIED ARCHAEOLOGIST SHALL ASSESS THE SIGNIFICANCE OF THE FIND AND MAKE RECOMMENDATIONS FOR FURTHER EVALUATION AND TREATMENT AS NECESSARY, SUCH AS EXCAVATION AND EVALUATION OF THE FINDS IN ACCORDANCE WITH SECTION 15064.5 OF THE CEQA GUIDELINES, WHICH SHALL BE DOCUMENTED IN THE PROJECT RECORD. WORK IN THE AREA OF THE FIND SHALL ONLY PROCEED AFTER AUTHORIZATION IS GRANTED BY THE CITY OF WHEATLAND FOLLOWING COORDINATION WITH THE QUALIFIED ARCHAEOLOGIST.

4.4-2 THE FOLLOWING REQUIREMENTS SHALL BE INCLUDED THROUGH A NOTATION ON ALL PROJECT IMPROVEMENT PLANS PRIOR TO THE ISSUANCE OF GRADING PERMITS AND SHALL BE IMPLEMENTED DURING PROJECT CONSTRUCTION, TO THE SATISFACTION OF THE CITY ENGINEER:

IN THE EVENT SUBSURFACE DEPOSITS BELIEVED TO BE CULTURAL OR HUMAN IN ORIGIN ARE DISCOVERED DURING CONSTRUCTION, ALL WORK SHALL HALT WITHIN A 50-FOOT RADIUS OF THE DISCOVERY. A QUALIFIED PROFESSIONAL ARCHAEOLOGIST, MEETING THE SECRETARY OF THE INTERIOR'S PROFESSIONAL QUALIFICATION STANDARDS FOR PRECONTACT AND HISTORIC ARCHAEOLOGIST, SHALL BE RETAINED TO EVALUATE THE SIGNIFICANCE OF THE FIND, AND SHALL HAVE THE AUTHORITY TO MODIFY THE NO-WORK RADIUS AS APPROPRIATE, USING PROFESSIONAL JUDGMENT. THE FOLLOWING NOTIFICATIONS SHALL APPLY, DEPENDING ON THE NATURE OF THE FIND:

- IF THE PROFESSIONAL ARCHAEOLOGIST DETERMINES THAT THE FIND DOES NOT REPRESENT A CULTURAL RESOURCE, WORK MAY RESUME IMMEDIATELY, AND AGENCY NOTIFICATIONS ARE NOT REQUIRED.
- IF THE PROFESSIONAL ARCHAEOLOGIST DETERMINES THAT THE FIND DOES REPRESENT A CULTURAL RESOURCE FROM ANY TIME PERIOD OR CULTURAL AFFILIATION, HE OR SHE SHALL IMMEDIATELY NOTIFY THE CITY OF WHEATLAND AND APPLICABLE LANDOWNER. THE OFFICE OF HISTORIC PRESERVATION (OHP) SHALL BE CONSULTED ON A FINDING OF ELIGIBILITY AND APPROPRIATE TREATMENT MEASURES SHALL BE IMPLEMENTED, IF THE FIND IS DETERMINED TO BE A HISTORICAL RESOURCE UNDER CEQA, AS DEFINED IN SECTION 15064.5(A) OF THE CEQA GUIDELINES. APPROPRIATE TREATMENT MEASURES THAT PRESERVE OR RESTORE THE CHARACTER AND INTEGRITY OF A FIND MAY BE, BUT ARE NOT LIMITED TO, PROCESSING MATERIALS FOR REBURIAL, MINIMIZING HANDLING OF HISTORICAL OBJECTS, LEAVING OBJECTS IN PLACE WITHIN THE LANDSCAPE, CONSTRUCTION MONITORING OF FURTHER CONSTRUCTION ACTIVITIES, AND/OR RETURNING OBJECTS TO A LOCATION WITHIN THE PROJECT AREA WHERE THEY WILL NOT BE SUBJECT TO FUTURE IMPACTS. WORK SHALL NOT RESUME WITHIN THE NO-WORK RADIUS UNTIL THE DETERMINATION IS MADE THROUGH CONSULTATION, AS APPROPRIATE, THAT THE SITE EITHER: 1) IS NOT A HISTORICAL RESOURCE UNDER CEQA,

AS DEFINED IN SECTION 15064.5(A) OF THE CEQA GUIDELINES; OR 2) THAT THE TREATMENT MEASURES HAVE BEEN COMPLETED TO THE CITY'S SATISFACTION.

- IF THE FIND INCLUDES HUMAN REMAINS, OR REMAINS THAT ARE POTENTIALLY HUMAN, THE PROFESSIONAL ARCHAEOLOGIST SHALL ENSURE REASONABLE PROTECTION MEASURES ARE TAKEN TO PROTECT THE DISCOVERY FROM DISTURBANCE (ASSEMBLY BILL [AB] 2641). THE ARCHAEOLOGIST SHALL NOTIFY THE CITY OF WHEATLAND AND THE YUBA COUNTY CORONER (PER SECTION 7050.5 OF THE HEALTH AND SAFETY CODE). THE PROVISIONS OF SECTION 7050.5 OF THE CALIFORNIA HEALTH AND SAFETY CODE, SECTION 5097.98 OF THE CALIFORNIA PRC, AND AB 2641 SHALL BE IMPLEMENTED. IF THE CORONER DETERMINES THE REMAINS ARE NATIVE AMERICAN AND NOT THE RESULT OF A CRIME SCENE, THE CORONER SHALL NOTIFY THE NAHC, WHICH THEN SHALL DESIGNATE A NATIVE AMERICAN MOST LIKELY DESCENDANT (MLD) FOR THE PROPOSED PROJECT (SECTION 5097.98 OF THE PRC). THE DESIGNATED MLD SHALL HAVE 48 HOURS FROM THE TIME ACCESS TO THE PROPERTY IS GRANTED TO MAKE RECOMMENDATIONS CONCERNING TREATMENT OF THE REMAINS. IF THE LANDOWNER DOES NOT AGREE WITH THE RECOMMENDATIONS OF THE MLD, THE NAHC SHALL MEDIATE (SECTION 5097.94 OF THE PRC). IF AN AGREEMENT IS NOT REACHED, THE LANDOWNER SHALL REBURY THE REMAINS WHERE THEY SHALL NOT BE FURTHER DISTURBED (SECTION 5097.98 OF THE PRC). THE BURIAL SHALL ALSO INCLUDE EITHER RECORDING THE SITE WITH THE NAHC OR THE APPROPRIATE INFORMATION CENTER, USING AN OPEN SPACE OR CONSERVATION ZONING DESIGNATION OR EASEMENT, OR RECORDING A REINSTATEMENT DOCUMENT WITH YUBA COUNTY (AB 2641). WORK SHALL NOT RESUME WITHIN THE NO-WORK RADIUS UNTIL THE CITY, THROUGH CONSULTATION AS APPROPRIATE, DETERMINES THAT THE TREATMENT MEASURES HAVE BEEN COMPLETED TO THEIR SATISFACTION.

4.5-4 SHOULD PALEONTOLOGICAL RESOURCES BE DISCOVERED DURING GROUND-DISTURBING ACTIVITIES, WORK SHALL BE HALTED IN THE AREA WITHIN 50 FEET OF THE FIND. THE CITY OF WHEATLAND COMMUNITY DEVELOPMENT DEPARTMENT SHALL BE NOTIFIED AND A QUALIFIED PALEONTOLOGIST SHALL BE RETAINED TO INSPECT THE DISCOVERY. IF DEEMED SIGNIFICANT UNDER CRITERIA ESTABLISHED BY THE SOCIETY FOR VERTEBRATE PALEONTOLOGY WITH RESPECT TO AUTHENTICITY, COMPLETENESS, PRESERVATION, AND IDENTIFICATION, THE RESOURCE(S) SHALL THEN BE SALVAGED AND DEPOSITED IN AN ACCREDITED AND PERMANENT SCIENTIFIC INSTITUTION (E.G., UNIVERSITY OF CALIFORNIA MUSEUM OF PALEONTOLOGY [UCMP]), WHERE THE DISCOVERY WOULD BE PROPERLY CURATED AND PRESERVED FOR THE BENEFIT OF CURRENT AND FUTURE GENERATIONS. CONSTRUCTION MAY CONTINUE IN AREAS OUTSIDE OF THE BUFFER ZONE. THE LANGUAGE OF THIS MITIGATION MEASURE SHALL BE INCLUDED ON ANY FUTURE GRADING PLANS, UTILITY PLANS, AND IMPROVEMENT PLANS APPROVED BY THE CITY OF WHEATLAND ENGINEERING DEPARTMENT FOR THE PROPOSED PROJECT, WHERE GROUND-DISTURBING WORK WOULD BE REQUIRED.

4.7-1 PRIOR TO ISSUANCE OF ANY GRADING PERMITS, THE CONTRACTOR SHALL PREPARE A STORM WATER POLLUTION PREVENTION PLAN (SWPPP) FOR REVIEW AND APPROVAL BY THE CVRWQCB. THE CONTRACTOR SHALL FILE THE NOTICE OF INTENT (NOI) AND ASSOCIATED FEE TO THE SWRCB. THE SWPPP SHALL SERVE AS THE FRAMEWORK FOR IDENTIFICATION, ASSIGNMENT, AND IMPLEMENTATION OF BMPs. THE CONTRACTOR SHALL IMPLEMENT BMPs TO REDUCE POLLUTANTS IN STORMWATER DISCHARGES TO THE MAXIMUM EXTENT PRACTICABLE. CONSTRUCTION (TEMPORARY) BMPs FOR THE PROJECT MAY INCLUDE, BUT ARE NOT LIMITED TO: FIBER ROLLS, STRAW BALE BARRIER, STRAW WATTLES, STORM DRAIN INLET PROTECTION, VELOCITY DISSIPATION DEVICES, SILT FENCES, WIND EROSION CONTROL, STABILIZED CONSTRUCTION ENTRANCE, HYDROSEEDING, REVEGETATION TECHNIQUES, AND DUST CONTROL MEASURES. THE SWPPP SHALL BE SUBMITTED TO BOTH THE CITY AND COUNTY DIRECTOR OF PUBLIC WORKS, AND THE CITY AND COUNTY ENGINEER FOR REVIEW AND APPROVAL AND SHALL REMAIN ON THE PROJECT SITE DURING ALL PHASES OF CONSTRUCTION. FOLLOWING IMPLEMENTATION OF THE SWPPP, THE CONTRACTOR SHALL SUBSEQUENTLY DEMONSTRATE THE SWPPP'S EFFECTIVENESS AND PROVIDE FOR NECESSARY AND APPROPRIATE REVISIONS, MODIFICATIONS, AND IMPROVEMENTS TO REDUCE POLLUTANTS IN STORMWATER DISCHARGES TO THE MAXIMUM EXTENT PRACTICABLE.

4.7-2 PRIOR TO APPROVAL OF FINAL PROJECT IMPROVEMENT PLANS, A DETAILED BEST MANAGEMENT PRACTICE (BMP) AND WATER QUALITY MAINTENANCE PLAN SHALL BE SUBMITTED TO BOTH THE CITY AND COUNTY DIRECTOR OF PUBLIC WORKS, AND THE CITY AND COUNTY ENGINEER FOR REVIEW AND APPROVAL. THE BMP AND WATER QUALITY MAINTENANCE PLAN SHALL MEET THE STANDARDS OF THE CITY'S UNREGULATED SMALL TRADITIONAL MS4 PERMIT, AND THE CALIFORNIA STORMWATER QUALITY ASSOCIATION (CASQA) STORMWATER BMP HANDBOOK FOR NEW DEVELOPMENT AND REDEVELOPMENT. SITE DESIGN MEASURES, SOURCE CONTROL MEASURES, HYDROMODIFICATION MANAGEMENT, AND LOW IMPACT DEVELOPMENT (LID) STANDARDS, AS NECESSARY, SHALL BE INCORPORATED INTO THE DESIGN AND SHOWN ON THE IMPROVEMENT PLANS.

4.7-4(a) PRIOR TO GRADING PERMIT ISSUANCE FOR THE PIPELINE ALIGNMENT, THE PROJECT CONTRACTOR SHALL SUBMIT IMPROVEMENT PLANS TO THE CITY AND COUNTY DIRECTOR OF PUBLIC WORKS, AND THE CITY AND COUNTY ENGINEER FOR REVIEW AND APPROVAL WHICH INDICATE (VIA NOTATION ON THE IMPROVEMENT PLANS) THAT ALL PIPE APPURTENANCES SUCH AS AIR AND VACUUM VALVES AND BLOW-OFFS SHALL BE INSTALLED AT ELEVATIONS ABOVE THE 100-YEAR BFE OR FLOOD-PROOFED TO THE SATISFACTION OF THE CITY AND COUNTY ENGINEER.

4.7-4(b) FINISHED BUILDING PAD ELEVATIONS AT THE PUMP STATION 1 SITE SHALL BE A MINIMUM OF ONE FOOT ABOVE THE 100-YEAR BFE, IN ACCORDANCE WITH SECTION 15.20.150 OF THE CITY OF WHEATLAND MUNICIPAL CODE, AND SHALL BE SHOWN ON PROJECT IMPROVEMENT PLANS SUBMITTED TO THE CITY DIRECTOR OF PUBLIC WORKS AND THE CITY ENGINEER FOR REVIEW AND APPROVAL. THE PROJECT IMPROVEMENT PLANS SHALL ALSO DEMONSTRATE THAT ALL FLOOD-PROOFED STRUCTURES DEVELOPED AS PART OF THE PROPOSED PROJECT WILL NOT ADVERSELY AFFECT SURROUNDING PROPERTIES, IN ACCORDANCE WITH SECTION 15.20.150(A) OF THE CITY OF WHEATLAND MUNICIPAL CODE.

THE PROPOSED PROJECT'S COMPLIANCE WITH SECTION 15.20.150 OF THE CITY OF WHEATLAND MUNICIPAL CODE, INCLUDING FINAL PAD ELEVATION AND

AVOIDANCE OF ADVERSE EFFECTS ON SURROUNDING PROPERTIES, SHALL BE CERTIFIED BY A CALIFORNIA REGISTERED CIVIL ENGINEER OR LICENSED LAND SURVEYOR AND SUBMITTED TO THE CITY ENGINEER. PRIOR TO CONSTRUCTION OF THE FOUNDATION OR AT THE COMPLETION OF FINAL GRADING, WHICHEVER COMES FIRST, PROOF OF CERTIFICATION SHALL BE SUBMITTED TO THE CITY ENGINEER AND FLOODPLAIN ADMINISTRATOR FOR REVIEW AND APPROVAL. BUILDING CONSTRUCTION SHALL NOT OCCUR UNTIL THE CERTIFICATION HAS BEEN RECEIVED AND APPROVED. BENCHMARK ELEVATION AND LOCATION SHALL BE SHOWN ON THE IMPROVEMENT PLANS TO THE SATISFACTION OF THE CITY ENGINEER.

4.9-1(a) PRIOR TO INITIATION OF CONSTRUCTION, ALL CONSTRUCTION CREW MEMBERS, CONSULTANTS, AND OTHER PERSONNEL INVOLVED IN PROJECT IMPLEMENTATION SHALL RECEIVE PROJECT-SPECIFIC TRIBAL CULTURAL RESOURCE AWARENESS TRAINING. THE TRAINING SHALL BE CONDUCTED IN COORDINATION WITH QUALIFIED CULTURAL RESOURCE SPECIALISTS AND REPRESENTATIVES FROM CULTURALLY AFFILIATED NATIVE AMERICAN TRIBES. THE TRAINING WILL EMPHASIZE THE REQUIREMENT FOR CONFIDENTIALITY AND CULTURALLY APPROPRIATE, RESPECTFUL TREATMENT OF ANY FIND OF SIGNIFICANCE TO CULTURALLY AFFILIATED NATIVE AMERICANS TRIBES. ALL PERSONNEL REQUIRED TO RECEIVE THE TRAINING SHALL ALSO BE REQUIRED TO SIGN A FORM THAT ACKNOWLEDGES RECEIPT OF THE TRAINING, WHICH SHALL BE SUBMITTED TO THE CITY OF WHEATLAND COMMUNITY DEVELOPMENT DEPARTMENT FOR REVIEW AND APPROVAL.

AS A COMPONENT OF THE TRAINING, A BROCHURE WILL BE DISTRIBUTED TO ALL PERSONNEL ASSOCIATED WITH PROJECT IMPLEMENTATION. AT A MINIMUM THE BROCHURE SHALL DISCUSS THE FOLLOWING TOPICS IN CLEAR AND STRAIGHTFORWARD LANGUAGE:

- FIELD INDICATORS OF POTENTIAL ARCHAEOLOGICAL OR CULTURAL RESOURCES (I.E., WHAT TO LOOK FOR; FOR EXAMPLE: ARCHAEOLOGICAL ARTIFACTS, EXOTIC OR NON-NATIVE ROCK, UNUSUALLY LARGE AMOUNTS OF SHELL OR BONE, SIGNIFICANT SOIL COLOR VARIATION, ETC.);
- REGULATIONS GOVERNING ARCHAEOLOGICAL RESOURCES AND TRIBAL CULTURAL RESOURCES;
- CONSEQUENCES OF DISREGARDING OR VIOLATING LAWS PROTECTING ARCHAEOLOGICAL OR TRIBAL CULTURAL RESOURCES; AND
- STEPS TO TAKE IF A WORKER ENCOUNTERS A POSSIBLE RESOURCE.

THE TRAINING SHALL INCLUDE PROJECT-SPECIFIC GUIDANCE FOR ON-SITE PERSONNEL INCLUDING AGREED UPON PROTOCOLS FOR RESOURCE AVOIDANCE, WHEN TO STOP WORK, AND WHO TO CONTACT IF POTENTIAL ARCHAEOLOGICAL OR TRIBAL CULTURAL RESOURCES ARE IDENTIFIED. THE TRAINING SHALL ALSO DIRECT WORK TO STOP, AND CONTACT WITH THE COUNTY CORONER AND THE NAHC TO OCCUR IMMEDIATELY, IN THE EVENT THAT POTENTIAL HUMAN REMAINS ARE IDENTIFIED. NAHC WILL ASSIGN A MOST LIKELY DESCENDANT IF THE REMAINS ARE DETERMINED BY THE CORONER TO BE NATIVE AMERICAN IN ORIGIN.

4.9-1(b) THE FOLLOWING LANGUAGE SHALL BE NOTED ON PROJECT IMPROVEMENT PLANS, SUBJECT TO REVIEW AND APPROVAL BY THE CITY OF WHEATLAND COMMUNITY DEVELOPMENT DEPARTMENT, AND SHALL BE IMPLEMENTED DURING PROJECT CONSTRUCTION:

IF POTENTIAL TRIBAL CULTURAL RESOURCES, ARCHAEOLOGICAL RESOURCES, OTHER CULTURAL RESOURCES, ARTICULATED, OR DISARTICULATED HUMAN REMAINS ARE DISCOVERED DURING CONSTRUCTION ACTIVITIES, ALL WORK SHALL CEASE WITHIN 100 FEET OF THE FIND (BASED ON THE APPARENT DISTRIBUTION OF CULTURAL RESOURCES). EXAMPLES OF POTENTIAL CULTURAL MATERIALS INCLUDE MIDDEN SOIL, ARTIFACTS, CHIPPED STONE, EXOTIC (NON-NATIVE) ROCK, OR UNUSUAL AMOUNTS OF BAKED CLAY, SHELL, OR BONE.

A QUALIFIED CULTURAL RESOURCES SPECIALIST AND NATIVE AMERICAN REPRESENTATIVE FROM THE TRADITIONALLY AND CULTURALLY AFFILIATED NATIVE AMERICAN TRIBE(S) WILL ASSESS THE SIGNIFICANCE OF THE FIND AND MAKE RECOMMENDATIONS FOR FURTHER EVALUATION AND TREATMENT AS NECESSARY. CULTURALLY APPROPRIATE TREATMENT THAT PRESERVES OR RESTORES THE CULTURAL CHARACTER AND INTEGRITY OF A TRIBAL CULTURAL RESOURCE MAY BE, BUT IS NOT LIMITED TO, PROCESSING MATERIALS FOR REBURIAL, MINIMIZING HANDLING OF CULTURAL OBJECTS, LEAVING OBJECTS IN PLACE WITHIN THE LANDSCAPE, CONSTRUCTION MONITORING OF FURTHER CONSTRUCTION ACTIVITIES BY TRIBAL REPRESENTATIVES OF THE TRADITIONALLY AND CULTURALLY AFFILIATED NATIVE AMERICAN TRIBE, AND/OR RETURNING OBJECTS TO A LOCATION WITHIN THE PROJECT AREA WHERE THEY WILL NOT BE SUBJECT TO FUTURE IMPACTS. THE UAIC DOES NOT CONSIDER CURATION OF TRIBAL CULTURAL RESOURCES TO BE APPROPRIATE OR RESPECTFUL AND REQUESTS THAT MATERIALS NOT BE PERMANENTLY CURATED, UNLESS SPECIFICALLY REQUESTED BY THE TRIBE.

IF ARTICULATED OR DISARTICULATED HUMAN REMAINS ARE DISCOVERED DURING CONSTRUCTION ACTIVITIES, THE COUNTY CORONER AND NATIVE AMERICAN HERITAGE COMMISSION SHALL BE CONTACTED IMMEDIATELY. UPON DETERMINATION BY THE COUNTY CORONER THAT THE FIND IS NATIVE AMERICAN IN ORIGIN, THE NATIVE AMERICAN HERITAGE COMMISSION WILL ASSIGN THE MOST LIKELY DESCENDANT(S) WHO WILL WORK WITH THE PROJECT PROPONENT TO DEFINE APPROPRIATE TREATMENT AND DISPOSITION OF THE BURIALS.

FOLLOWING A REVIEW OF THE FIND AND CONSULTATION WITH APPROPRIATE EXPERTS, THE AUTHORITY TO PROCEED MAY BE ACCOMPANIED BY THE ADDITION OF DEVELOPMENT REQUIREMENTS WHICH PROVIDE FOR PROTECTION OF THE SITE AND/OR ADDITIONAL MEASURES NECESSARY TO ADDRESS THE UNIQUE OR SENSITIVE NATURE OF THE SITE. THE TREATMENT RECOMMENDATIONS MADE BY THE CULTURAL RESOURCE SPECIALIST AND THE NATIVE AMERICAN REPRESENTATIVE WILL BE DOCUMENTED IN THE PROJECT RECORD. ANY RECOMMENDATIONS MADE BY THESE EXPERTS THAT ARE NOT IMPLEMENTED, MUST BE DOCUMENTED AND EXPLAINED IN THE PROJECT RECORD. WORK IN THE AREA(S) OF THE CULTURAL RESOURCE DISCOVERY MAY ONLY PROCEED AFTER AUTHORIZATION IS GRANTED BY THE CITY OF WHEATLAND COMMUNITY DEVELOPMENT DEPARTMENT FOLLOWING COORDINATION WITH CULTURAL RESOURCES EXPERTS AND TRIBAL REPRESENTATIVES AS APPROPRIATE.

4.9-1(c) THE FOLLOWING LANGUAGE SHALL BE NOTED ON PROJECT IMPROVEMENT PLANS, SUBJECT TO REVIEW AND APPROVAL BY THE CITY OF WHEATLAND COMMUNITY DEVELOPMENT DEPARTMENT, AND SHALL BE IMPLEMENTED DURING PROJECT CONSTRUCTION:

THE CITY SHALL GIVE UAIC AT LEAST ONE (1) WEEK NOTICE PRIOR TO INITIATING GROUND-DISTURBING ACTIVITIES WITHIN THE MAPPED SENSITIVE AREAS AGREED UPON DURING AB 52 CONSULTATION BETWEEN THE CITY OF WHEATLAND AND THE UAIC (CONFIDENTIAL MAPPED AREAS PROVIDED TO THE CITY). THE PURPOSE OF THE NOTIFICATION WILL BE TO ALLOW UAIC THE OPPORTUNITY TO CONDUCT MONITORING. IN THE EVENT THAT UAIC DOES NOT RESPOND, OR A TRIBAL MONITOR DOES NOT REPORT TO THE JOB SITE AT THE SCHEDULED TIME, CONSTRUCTION ACTIVITIES MAY PROCEED WITHOUT MONITORING, AS LONG AS THE REQUIRED NOTICE WAS PROVIDED AND DOCUMENTED.

TRIBAL MONITORING SHALL BE LIMITED TO TIMES WHEN ACTIVE SOIL DISTURBANCE IS OCCURRING, AND THE MONITORING SHALL BE CURTAILED ONCE AN AREA HAS BEEN DISTURBED (WITH ASSOCIATED TRIBAL MONITORING) TO A DEPTH OF AT LEAST TWO FEET, AND THE TRIBAL MONITOR DETERMINES THERE IS A LOW POTENTIAL FOR TRIBAL CULTURAL RESOURCES TO BE DISCOVERED.

THE TRIBAL MONITOR SHALL HAVE THE AUTHORITY TO TEMPORARILY PAUSE GROUND DISTURBANCE WITHIN 100 FEET OF A DISCOVERY FOR A DURATION LONG ENOUGH TO EXAMINE THE RESOURCE. IF NO RESOURCES ARE IDENTIFIED, THEN CONSTRUCTION ACTIVITIES SHALL PROCEED, AND NO AGENCY NOTIFICATIONS ARE REQUIRED. IN THE EVENT THAT A TRIBAL CULTURAL RESOURCE IS IDENTIFIED, THE TRIBAL MONITOR SHALL FLAG OFF THE DISCOVERY LOCATION AND NOTIFY THE CITY IMMEDIATELY TO COORDINATE REGARDING APPROPRIATE AND RESPECTFUL TREATMENT PURSUANT TO STATE LAW.

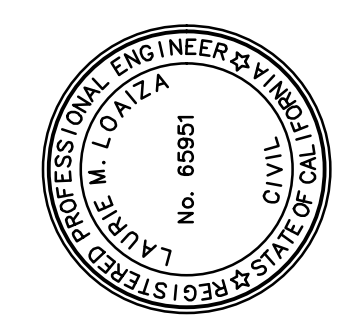
THE TRIBAL MONITOR SHALL WEAR APPROPRIATE CONSTRUCTION SAFETY EQUIPMENT INCLUDING STEEL-TOED BOOTS, CONSTRUCTION VEST, AND HARD HAT.

1-1. IN CONJUNCTION WITH SUBMITTAL OF IMPROVEMENTS PLANS FOR THE PUMP STATIONS, THE COMMUNITY DEVELOPMENT DIRECTOR SHALL ENSURE THAT A LANDSCAPE PLAN SHALL BE PREPARED BY A LICENSED LANDSCAPE CONTRACTOR OR ARCHITECT, FOR REVIEW BY THE CITY (PUMP STATION 2) OR THE COUNTY (PUMP STATION 3), WHICH, AT A MINIMUM, SHALL INCLUDE:

- PERIMETER LANDSCAPING FOR SCREENING PURPOSES, WHICH MAY INCLUDE A COMBINATION OF EARTHEN BERM AND LANDSCAPE PLANTINGS SPACED EVENLY ALONG THE PERIMETER;
- LEGEND LISTING THE TYPE, NUMBER, AND SIZE OF PLANT MATERIALS, INDICATING THE PROVIDED NUMBER OF EACH PLANT TYPE;
- TO THE EXTENT FEASIBLE, VEGETATION TYPES SHALL BE SELECTED TO MINIMIZE WATER DEMAND AND MAXIMIZE SCREENING (E.G., EVERGREEN TREES VERSUS DECIDUOUS);
- TREES PLANTINGS ALONG PUMP STATION PERIMETERS FOR SCREENING PURPOSES SHALL INCLUDE A MIX OF 15-GALLON AND 24-GALLON TREES. SHRUBS SHALL BE A MINIMUM 5-GALLON CONTAINER SIZE, AND LIVE GROUND COVER PLANTS SHALL COVER BARE GROUND;
- IRRIGATION PLAN;
- TO THE EXTENT FEASIBLE, ABOVE-GROUND STRUCTURES SHALL BE PAINTED OR OTHERWISE SCREENED TO BLEND IN WITH THE SURROUNDING ENVIRONMENT.

REVISIONS			
MARK	DESCRIPTION	DATE	APPD
1			
2			
3			
4			
5			

**FOR CONSTRUCTION**  
DATE: 10/10/2025



PREPARED UNDER THE DIRECTION OF  
*Laurie M. Loaiza*  
LAURIE M. LOAIZA, RCE 65951 DATE 10/10/2025  
DESIGNED BY LML/ERG  
DRAWN BY ERG  
REVIEWED BY DHS/LML

**Coastland**  
Coastland | DCCM  
11641 Blocker Dr., Ste 170  
Auburn, CA 95603  
530.888.9929 | coastland.dccm.com

WHEATLAND REGIONAL SEWER PIPELINE PROJECT  
CALIFORNIA  
CITY OF WHEATLAND

PROJECT NUMBER 77-4508  
DATE: 10/10/2025  
DRAWING NUMBER G.05  
SHEET NO: 5 OF 142

**GENERAL NOTES - 3**

FOR REDUCED PLANS, THE ORIGINAL SCALE IS IN INCHES

Path: T:\Civil\_3D\Projects\774508 Wheatland Regional Sewer\Drawings\774508 Title Sheet.dwg Layout Name: GENERAL NOTES-3 Plot Date: Oct 10, 2025 at 03:11 pm

FOR REDUCED PLANS, THE ORIGINAL SCALE IS IN INCHES

Path: T:\Civil\_3D\Projects\774508\Wheatland Regional Sewer\dwg\774508 Title Sheet.dwg Layout Name: ABBREVIATIONS & LEGENDS Plot Date: Oct 10, 2025 at 03:11 pm

**LEGEND**

DESCRIPTION OF LINETYPE	PROPOSED	EXISTING
PROPERTY LINE	---	---
SEWER PIPELINE EASEMENT	---	---
EASEMENT	---	---
FLOWLINE	---	---
CENTERLINE/CONTROL LINE	---	---
CHAIN LINK FENCE	○-○-○-○	○-○-○-○
WOOD FENCE	○-○-○-○	○-○-○-○
WIRE FENCE	-x-x-x-x-	-x-x-x-x-
WATER MAIN PIPE	—w—	—w—
SANITARY SEWER PIPE	—ss—	—ss—
STORM DRAIN PIPE	—g—	—g—
GAS LINE	—g—	—g—
TELEPHONE LINE/CONDUIT	—t—	—t—
ELECTRICAL LINE/CONDUIT	—e—	—e—
OVERHEAD UTILITY	—OHU—	—OHU—

DESCRIPTION OF SYMBOL	PROPOSED	EXISTING
CONCRETE	[Symbol]	[Symbol]
ASPHALT CONCRETE	[Symbol]	[Symbol]
EDGE GRIND	[Symbol]	N/A
ROCK SLOPE PROTECTION	[Symbol]	[Symbol]
WATER MAIN GATE VALVE	[Symbol]	[Symbol]
WATER MAIN BLOWOFF	[Symbol]	[Symbol]
WATER METER	[Symbol]	[Symbol]
FIRE HYDRANT	[Symbol]	[Symbol]
BACKFLOW PREVENTER	[Symbol]	[Symbol]
SANITARY SEWER MANHOLE	[Symbol]	[Symbol]
SANITARY SEWER CLEANOUT	[Symbol]	[Symbol]
STORM DRAIN MANHOLE	[Symbol]	[Symbol]
STORM DRAIN CURB INLET/CATCH BASIN	[Symbol]	[Symbol]
STORM DRAIN DROP INLET (TOP OPENING)	[Symbol]	[Symbol]
STORM DRAIN DROP INLET (SIDE OPENING)	[Symbol]	[Symbol]
MAILBOX	[Symbol]	[Symbol]
ROADSIDE SIGN	[Symbol]	[Symbol]
STREET LIGHT	[Symbol]	[Symbol]
TREE AND DRIP LINE	[Symbol]	[Symbol]
SURVEY CONTROL POINT	[Symbol]	[Symbol]
JOINT UTILITY POLE	[Symbol]	[Symbol]
UTILITY POTHOLE (COMPLETED)	[Symbol]	[Symbol]
RAILROAD	N/A	[Symbol]
CROSSWALK	[Symbol]	[Symbol]
CROSSWALK (HIGH VISIBILITY)	[Symbol]	[Symbol]
WETLANDS	[Symbol]	[Symbol]
ACCESS ROAD	[Symbol]	[Symbol]
TEMPORARY ACCESS EASEMENT	[Symbol]	[Symbol]
TEMPORARY CONSTRUCTION EASEMENT	[Symbol]	[Symbol]
TREE TO BE REMOVED	[Symbol]	[Symbol]

**CONSTRUCTION NOTE DESIGNATIONS**

- (R1) = ROADWAY AND RELATED ITEMS CONSTRUCTION NOTES.
- (D1) = DRAINAGE AND RELATED ITEMS CONSTRUCTION NOTES.
- (W1) = WATER AND RELATED ITEMS CONSTRUCTION NOTES.
- (S1) = SEWER AND RELATED ITEMS CONSTRUCTION NOTES.
- (M1) = MISCELLANEOUS ITEMS CONSTRUCTION NOTES.
- (T1) = STRIPING AND RELATED ITEMS CONSTRUCTION NOTES.
- (E1) = ENVIRONMENTAL AND RELATED ITEMS CONSTRUCTION NOTES.

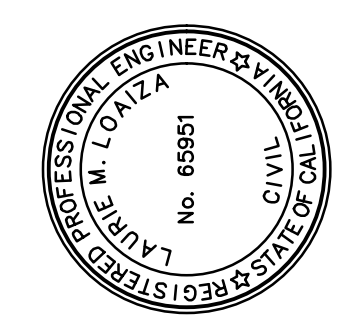
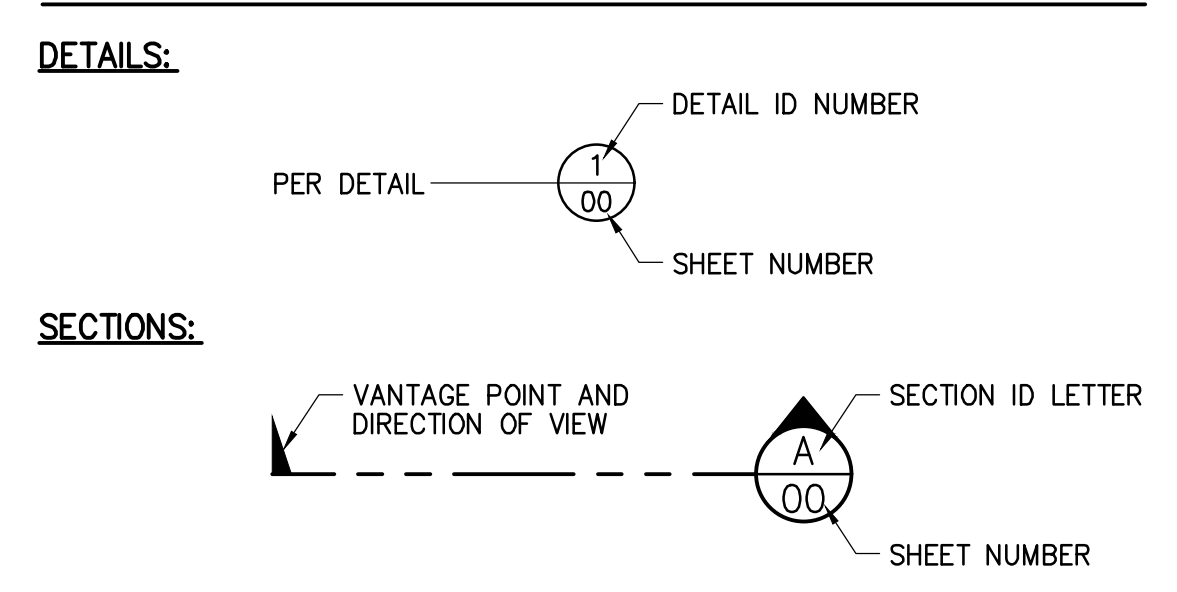
**ABBREVIATIONS**

AC	ASPHALT CONCRETE	OG	ORIGINAL GROUND
AB	AGGREGATE BASE	OD	OUTSIDE DIMENSION
ACP	ASBESTOS CEMENT PIPE	OH, OHU	OVERHEAD UTILITY
APPROX	APPROXIMATE	OHE	OVERHEAD ELECTRIC
A.P.N.	ASSESSORS PARCEL NUMBER	PB	PULL BOX
BC	BEGIN CURVE	PC	POINT OF CURVATURE
BFP	BACK FLOW PREVENTER	PCC	POINT OF COMPOUND CURVE
BFV	BUTTERFLY VALVE	PED	PEDESTRIAN
BO	BLOWOFF	PH	POTHOLE
BOP	BOTTOM OF PIPE	PI	POINT OF INTERSECTION
BRC	BEGIN REVERSE CURVE	PL	PROPERTY LINE
BSW	BACK OF SIDEWALK	PSF	POUNDS PER SQUARE FOOT
BWV	BACKWATER VALVE	PSI	POUNDS PER SQUARE INCH
BVC	BEGIN VERTICAL CURVE	PVC	POLY VINYL CHLORIDE
CAV	COMBINATION AIR VALVE	PVI	POINT OF VERTICAL INTERSECTION
CAVRV	COMBINED AIR VACUUM RELIEF VALVE	PRV	PRESSURE REDUCING VALVE
CB	CATCH BASIN	PS	PUMP STATION
C&G	CURB & GUTTER	PS1	PUMP STATION 1
CI	CAST IRON	PS2	PUMP STATION 2
CL	CENTERLINE	PS3	PUMP STATION 3
CLC	CONTROL LINE COORDINATE	PS21	PUMP STATION 21
CLSM	CONTROLLED LOW STRENGTH MATERIAL	R	RADIUS
CMP	CORRUGATED METAL PIPE	R.C.	RELATIVE COMPACTION
CO	CLEANOUT	RCP	REINFORCED CONCRETE PIPE
CONC	CONCRETE	RET	RETAINING
CP	CONTROL POINT	RPB	REDUCED PRESSURE BACKFLOW PREVENTER
CR	CURB RETURN	R&R	REMOVE & REPLACE
CSP	CORRUGATED STEEL PIPE	RT.	RIGHT
CTV	CABLE TELEVISION	RW	RECLAIMED WATER
CV	CHECK VALVE	R/W, ROW	RIGHT-OF-WAY
CVFCB	CENTRAL VALLEY FLOOD CONTROL BOARD	S	SLOPE
CVR	COVER	SD	STORM DRAIN
DET.	DETECTOR	SDE	STORM DRAIN EASEMENT
DI	DROP INLET	SDMH	STORM DRAIN MANHOLE
DIP	DUCTILE IRON PIPE	SL	STREET LIGHT
DWY	DRIVEWAY	SMP	SETTLEMENT MONITORING POINT
E	ELECTRICAL, ELECTRICAL CONDUIT	SS	SANITARY SEWER
ELEC	ELECTRICAL, ELECTRICAL CONDUIT	SSE	SANITARY SEWER EASEMENT
EC	END CURVE	SS LAT	SANITARY SEWER LATERAL
EG	EXISTING GRADE	SSMH	SANITARY SEWER MANHOLE
ELEC	ELECTRIC	SSCO	SANITARY SEWER CLEANOUT
EL. ELEV	ELEVATION	SSFM	SANITARY SEWER FORCE MAIN
EP	EDGE OF PAVEMENT	STA	STATION
EVC	END VERTICAL CURVE	STL	STEEL PIPE
EX,(E)	EXISTING	STD	STANDARD
FBG	FEET BELOW GRADE	TB	TOP OF BANK
FC	FACE OF CURB	TC	TOP OF CURB
FG	FINISHED GRADE	TCE	TEMPORARY CONSTRUCTION EASEMENT
FO	FIBER OPTIC	TEL	TELEPHONE
FM	FORCE MAIN	TG	TOP OF GRATE
FS	FINISH SURFACE	TOE	TOE OF SLOPE
FSW	FRONT OF SIDEWALK	TOP	TOP OF PIPE
G	GAS	TP	TELEPHONE POLE
GB	GRADE BREAK	TS	TRAFFIC SIGNAL
G SER	GAS SERVICE	TW	TOP OF WALL
GV	GATE VALVE	TYP.	TYPICAL
HDD	HORIZONTAL DIRECTIONAL DRILL	U	UNDERGROUND UTILITY
HDPE	HIGH DENSITY POLYETHYLENE	UC	UNDERGROUND
HP	HIGH POINT	UNKN	UNKNOWN
HPG	HIGH PRESSURE GAS	UPC	UNIFORM PLUMBING CODE
IC	INTERCONNECT	UPRR	UNION PACIFIC RAILROAD
IG	INVERT GRADE	UTIL	UTILITY
INV	INVERT GRADE	VC	VERTICAL CURVE
IP	IRON PIPE	VIF	VERIFY IN FIELD
JP	JOINT POLE	VL	VAULT
JT	JOINT TRENCH	VAR.	VARIES
LAT	SANITARY SEWER LATERAL	W, WTR	WATER, WATER MAIN
LF	LINEAR FEET	WM	WATER MAIN
LG	LIP OF GUTTER	WS	WATER SERVICE
LT	LEFT	W SER	WATER SERVICE
LVC	LENGTH OF VERTICAL CURVE	WV	WATER VALVE
MB	MAILBOX	< PT	ANGLE POINT
MH	MANHOLE		
MIN	MINIMUM		

**POTHOLE TABLE**

PH#	APPROX STATION	TYPE OF UTILITY	OWNER	UTILITY SIZE	MATERIAL	DEPTH TO TOP	DEPTH TO BOP
3	1008+50	COMMUNICATIONS	AT&T	2	PLASTIC	72"	78"
4	1008+90	PETROLEUM	KINDER MORGAN CENTURYLINK & VERIZON	10	STEEL	84"	94"
5	1009+40	COMMUNICATIONS	AT&T	2	HDPE	42"	56"
6	1010+95	GAS	PG&E	1	PLASTIC	26"	28"
7	1013+75	COMMUNICATIONS	AT&T - NOT FOUND	4	STEEL	60"	64"
8	1013+76	COMMUNICATIONS	FOUND	-	-	-	-
9	1013+90	GAS	PG&E	8	STEEL	41"	49"
10	1013+92	GAS	PG&E	1	PLASTIC	31"	33"
11	1014+25	COMMUNICATIONS	AT&T	4	PLASTIC	25"	29"
12	1018+40	COMMUNICATIONS	AT&T	1	PLASTIC	28"	30"
13	1027+47	GAS	PG&E	2	STEEL	37"	39"
14	1027+48	GAS	PG&E	4	STEEL	28"	32"
15	1027+50	COMMUNICATIONS	AT&T	ENCASED	CONCRETE	8"	52"
16	1030+45	GAS	PG&E	2	STEEL	40"	42"
17	1048+50	GAS	PG&E	2	PLASTIC	66"	68"
18	1062+90	GAS	PG&E	3	STEEL	67"	70"
19	NE OF PS2 POC	GAS	PG&E	3	STEEL	32"	35"
20	2009+00	COMMUNICATIONS	AT&T	4	STEEL	57"	61"
21	3143+25	COMMUNICATIONS	AT&T	2	HDPE	42"	49"
22	3143+75	PETROLEUM	KINDER MORGAN	6	STEEL	58"	64"
23	3161+50	GAS	PG&E	6	STEEL	61"	67"
24	3162+50	COMMUNICATIONS	AT&T	3	STEEL	44"	47"
25	3170+90	COMMUNICATIONS	AT&T	1	PLASTIC	28"	29"
26	3171+00	ELECTRICITY	PG&E	3	PLASTIC	34"	38"
27	3187+40	COMMUNICATIONS	CENTURYLINK	4	PLASTIC	44"	54"
28	3187+40	COMMUNICATIONS	AT&T	2	HDPE	44"	54"
29	3187+90	PETROLEUM	KINDER MORGAN	8	STEEL	31"	39"

**DETAIL AND SECTION CALLOUTS**



PREPARED UNDER THE DIRECTION OF  
 LAURIE M. LOAZA, RCE 65951 DATE 10/10/2025  
 DESIGNED BY LML/ERG DRAWN BY ERG REVIEWED BY DHS/LML

**Coastland DCCM**  
 Coastland | DCCM  
 11641 Blocker Dr., Ste 170  
 Auburn, CA 95603  
 530.888.9929 | coastland.dccm.com

CALIFORNIA  
 WHEATLAND REGIONAL SEWER PIPELINE PROJECT  
 CITY OF WHEATLAND  
**STANDARD ABBREVIATIONS & LEGENDS**

**FOR CONSTRUCTION**  
 DATE: 10/10/2025

REVISIONS			
MARK	DESCRIPTION	DATE	APPD
1			
2			
3			
4			
5			

PROJECT NUMBER  
77-4508  
 DATE: 10/10/2025  
 DRAWING NUMBER  
**G.07**  
 SHEET NO:  
6 OF 142

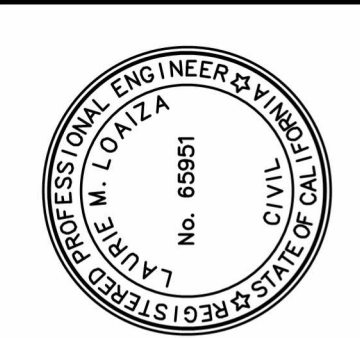
Path: T:\Civil\_3D\Projects\774508\Wheatland Regional Sewer\dwg\774508 Title Sheet.dwg Layout Name: SHEET KEY MAP Plot Date: Oct 10, 2025 at 03:11 pm

FOR REDUCED PLANS, THE ORIGINAL SCALE IS IN INCHES



**FOR CONSTRUCTION**  
DATE: 10/10/2025

REVISIONS			
MARK	DESCRIPTION	DATE	APPD
1			
2			
3			
4			
5			



PREPARED UNDER THE DIRECTION OF  
*Laurie M. Loaiza*  
LAURIE M. LOAIZA, RCE 65951 DATE: 10/10/2025  
DESIGNED BY: LML/ERG  
DRAWN BY: ERG  
REVIEWED BY: DHS/LML

**Coastland DCCM**  
Coastland | DCCM  
11641 Blocker Dr, Ste 170  
Auburn, CA 95603  
530.888.9929 | coastland.dccm.com

WHEATLAND REGIONAL SEWER PIPELINE PROJECT  
CALIFORNIA  
CITY OF WHEATLAND

PROJECT NUMBER: 77-4508  
DATE: 10/10/2025  
DRAWING NUMBER: G.08  
SHEET NO: 7 OF 142

**SHEET LOCATION KEY MAP**