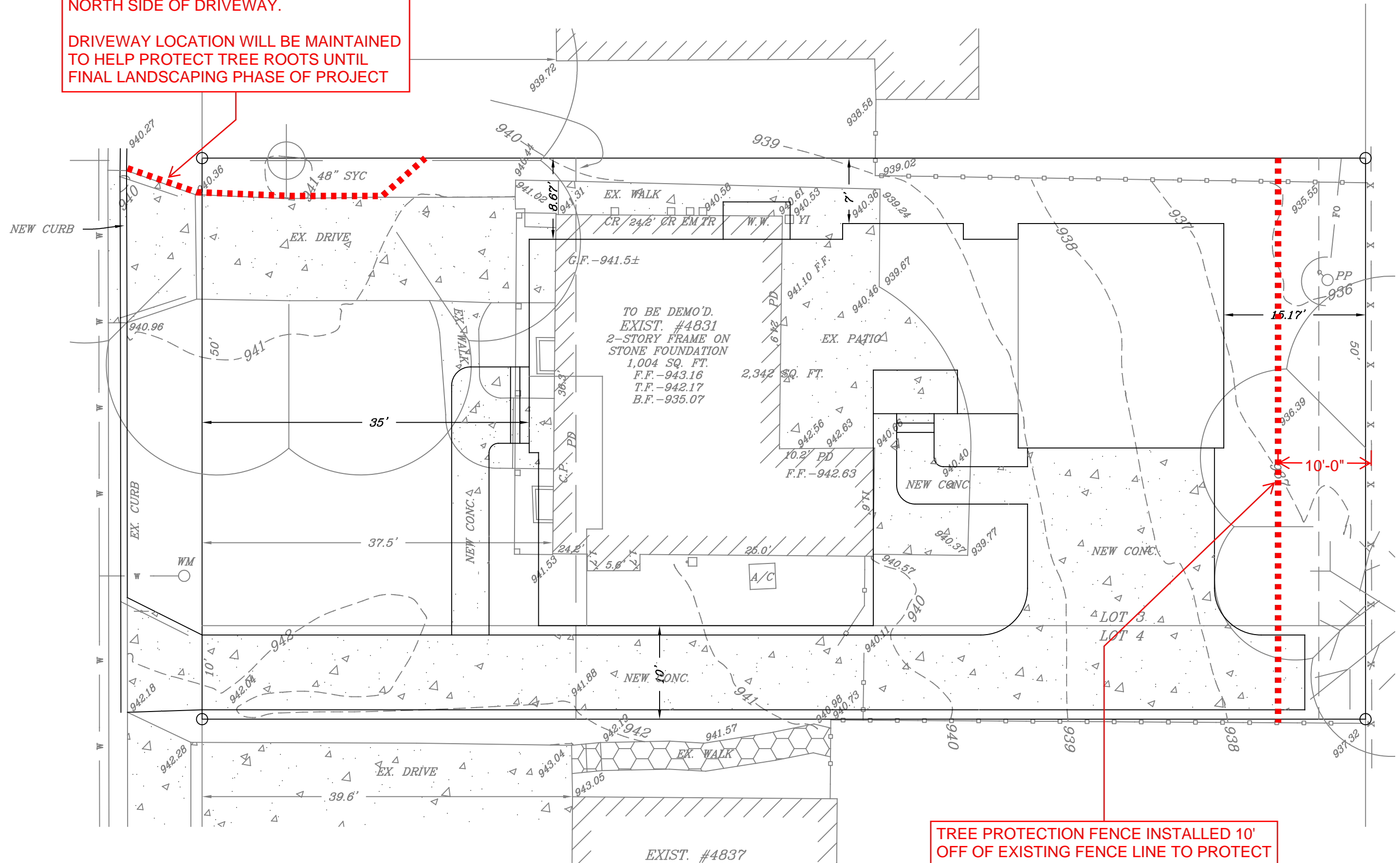


## 4831 BOOTH TREE PROTECTION PLAN

INSTALL TREE PROTECTION FENCE ALONG  
NORTH SIDE OF DRIVEWAY.

DRIVEWAY LOCATION WILL BE MAINTAINED  
TO HELP PROTECT TREE ROOTS UNTIL  
FINAL LANDSCAPING PHASE OF PROJECT



TREE PROTECTION FENCE INSTALLED 10'  
OFF OF EXISTING FENCE LINE TO PROTECT  
DRIP LINE OF ALL TREES ON THE WETZEL  
PROPERTY NEAR PROPERTY LINE