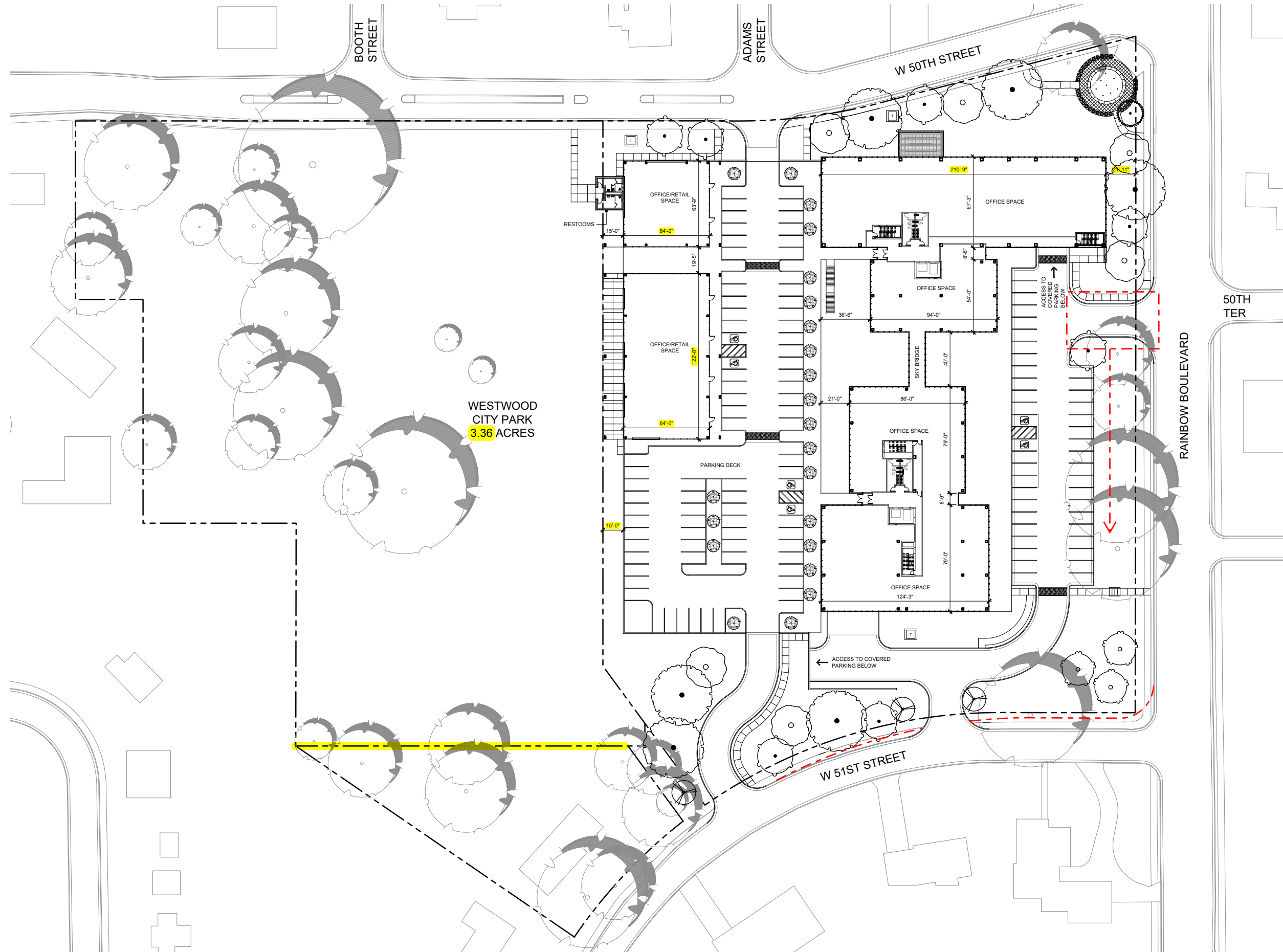


PRELIMINARY DEVELOPMENT PLAN



SUBMITTED FINAL DEVELOPMENT PLAN



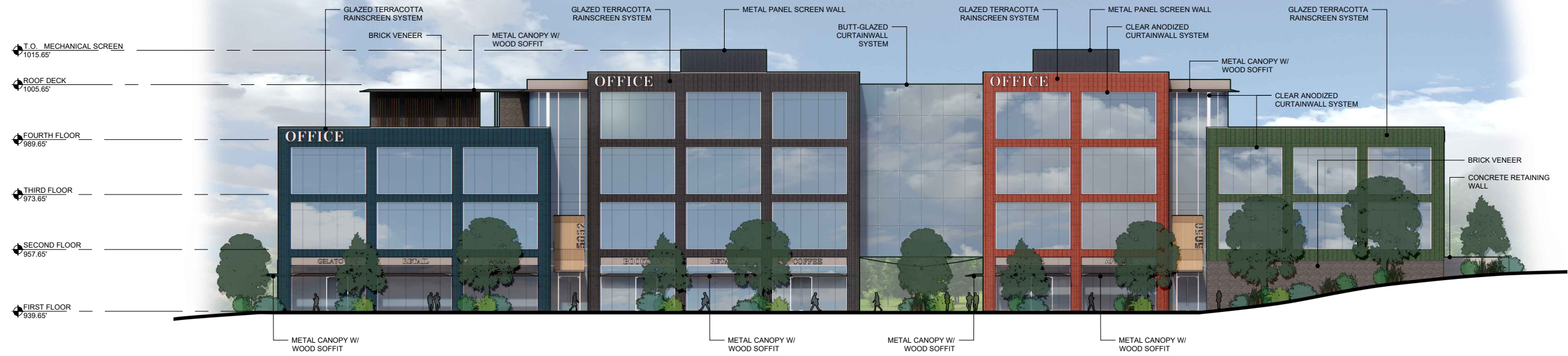
NOTE: REDUCTION IN GROSS SQUARE FOOTAGE FROM 124,449 GSF TO 115,156 GSF (-9,293 GSF)

NOTE: 34 ADDITIONAL NEW TREES PROVIDE AROUND DEVELOPMENT PERIMETER

ENTRANCE MOVED SOUTH AT REQUEST OF KDOT TO IMPROVE SIGHTLINE TO 50TH STREET INTERSECTION

ADDITIONAL ROW GRANTED ON DEVELOPER PROPERTY TO PROVIDE RIGHT AND LEFT HAND TURN LANES AT 51ST STREET TO IMPROVE EXITING AT REQUEST OF KDOT

PRELIMINARY DEVELOPMENT PLAN



↑
EXTERIOR CLADDING CHANGED FROM GLAZED TERRACOTTA SYSTEM TO A WOOD PHENOLIC PANEL SYSTEM AND COLORS WERE MUTED TO PROVIDE A WARMER ASTHETIC.
↓

SUBMITTED FINAL DEVELOPMENT PLAN

