

Proposal For: The City of West Monroe, LA
Project Indoor Sports Complex
875 Constitution Drive
West Monroe, LA 71292

Bid Package: Court floor covering
Proposal Due Date: See bid posting

Project Manager: Mike Mays (mmays@sportsfacilities.com)
RFI Contact: Mike Mays (mmays@sportsfacilities.com)

Referenced Project Documents

1. Specifications and Basis of Design- [1- Design and Specifications](#)
 - a. The above are a basis of design, a like product can be substituted with approval from Mike Mays.
2. Drawings: https://sporfacilitadvisory.sharepoint.com/:b:/s/SFM-Main/sfd/EUO7nGsLRe5Dpiyq8lFnzSEBSme_G0jzPrs9o3_P3YCNrw?e=EhhNS9
3. Sample Contract: [#Sample AIA Contract for FFE.docx](#)

Required Attachments

1. Proposed Product Specifications and Details
2. Proposal Details
3. W9
4. Initial redline comments on the sample contract

A. Base Proposal

1. The Bid Package referenced herein is entitled "Bid Package"
 - a. General Description:
 1. Provide 47,848 SF (6 courts) of 6' wide carpet roll product
 - a. Include storage carts, seam tape, and electric winder.
 - b. Alternative of 8 ft wide rolls
 2. Provide 16,506 SF (2 courts) of carpet tile
 - a. Include storage carts.
 3. Provide material, freight, unloading, and installation of package
 4. Provide closeout documents (warranty and service)
 5. See project specifications for itemized list and basis of design
 6. Provide a project timeline based on an installation window of November 27 through December 1, 2023 (this may change slightly based on construction progress)
 - b. General Items
 1. The proposal shall include all applicable permits, licenses, etc. related to this scope of work
 2. The proposal must include line-item pricing for each item as well as installation, and delivery

3. Payment and Performance Bonds in the amount of the award must be provided
4. The proposal shall include all necessary items and equipment needed to perform the referenced scope of work. This includes protecting existing finishes and conditions of the facility. All equipment must meet OSHA standards
5. Proposal to include clean-up of all trash and debris in a dumpster either provided by the awarded vendor or coordinated with the General Contractor to use current dumpster
6. Proposal to include all blocking, backing, and supports, necessary
7. The warranty period for all material, equipment, and labor based on specifications shall commence at the date of substantial completion or acceptance of work completed, whichever comes later
8. Coordination and meetings as required by the site's general contractor or Sports Facilities Companies
9. Proposal must include safety meeting attendance as required by site conditions
10. Provide safety manual and site-specific plan upon request
11. Conform to all applicable codes and regulations
12. Proposal shall include any storage requirements for material on site to complete work
13. Proposal shall include necessary mobilizations required for scope of work
14. Proposal must show sales tax exemption (the documentation will be provided to the awarded vendor)
15. Color choices of items will be made later from standard color options.
16. The awarded vendor must be able to provide all the items listed on the specifications and basis of design document.

Breakout Pricing: <https://sporfacilitadvisory.sharepoint.com/:x:/s/SFM-Main/sfd/EUFjZEbPAC1JkFElpSDmdEQBHb4gu-uVAVRD5vAoABfR6g?e=7aV6DP>

Total Base Proposal Price: List here \$ _____

List any exclusions:

GENERAL NOTES

1. LOUISIANA HAS A CALL NOTIFICATION PROGRAM. IN ORDER TO FACILITATE ITS PURPOSE, THE CONTRACTOR SHALL NOTIFY THE STATE OF LOUISIANA WITHOUT DELAY AND WITHOUT FIRST ASCERTAINING THE LOCATION OF UNDERGROUND UTILITIES BY SERVING A REGIONAL NOTIFICATION PROGRAM IN THE STATE OF LOUISIANA. THE REGIONAL NOTIFICATION PROGRAM CAN BE REACHED BY CALLING TO SERVE NOTICE OF EXCAVATION, THIS PROGRAM CAN BE REACHED BY CALLING 1-800-772-3020.
2. CAUTION!! ALL EXISTING UTILITIES PLOTTED FROM INFORMATION PROVIDED BY THE OWNER, FIELD SURVEY, AND RECORD DRAWINGS. THE CONTRACTOR SHALL VERIFY THE LOCATION OF ALL EXISTING UTILITIES AND THE LOCATION OF ABOVE GROUND FEATURES ONLY. NOT ALL EXISTING UTILITIES AND ABOVE GROUND FEATURES ARE SHOWN ON THE DRAWINGS. THE CONTRACTOR'S RESPONSIBILITY IS TO DETERMINE ALL EXISTING UTILITIES THAT MAY BE LOCATED ON THE SITE. THE CONTRACTOR SHALL BE RESPONSIBLE FOR VERIFYING THE LOCATION OF ALL EXISTING UTILITIES AND ABOVE GROUND FEATURES AND TO FIELD VERIFY THEIR LOCATION PRIOR TO ANY EXCAVATION. DISCREPANCIES ARE TO BE BROUGHT TO THE IMMEDIATE ATTENTION OF THE ENGINEER. THE CONTRACTOR SHALL BE RESPONSIBLE FOR VERIFYING THE LOCATION OF UTILITIES NOT SHOWN ON THE PLANS OR CHANGES RESULTING FROM DISCREPANCIES BETWEEN THE LOCATION OF UTILITIES SHOWN ON THE PLANS AND THEIR ACTUAL LOCATION.
3. CONTRACTOR SHALL COORDINATE ALL WORK WITH LOCAL UTILITY COMPANIES WHEN WORKING NEAR THEIR RESPECTIVE FACILITIES.
4. CONTRACTOR SHALL COORDINATE UTILITY TIE-INS WITH THE OWNER. CONTRACTOR SHALL OBTAIN OWNER APPROVAL AND SCHEDULE ANY REQUIRED INTERRUPTIONS IN SERVICE THAT ARE REQUIRED FOR UTILITY CONNECTIONS.
5. THE CONTRACTOR MUST ASSURE THAT ADVANCED ROADWAYS, ROAD SHOULDERS AND SIDEWALKS ARE CONSTRUCTED TO THE PROPER FINISH ELEVATION AND TO BE PROTECTED TO REMOVE DEBRIS, MUD, AND OTHER UNSAFE ITEMS FROM ROADWAY, SHOULDER OR DITCHES.
6. CONSTRUCTION BARRELS AND MARKERS SHALL BE USED IN ACCORDANCE WITH CURRENT M.L.T.C.D., LOUISIANA DOTD AND CITY REQUIREMENTS OR AS DIRECTED BY PROJECT ENGINEER WHEN CONSTRUCTION ACTIVITY OCCURS ADJACENT TO ROADS.
7. CONTRACTOR SHALL CLEAR AND GRUB AND PERFORM ALL DEMOLITION NECESSARY FOR PROJECT BEGINNER WHEN CONSTRUCTION ACTIVITY OCCURS ADJACENT TO ROADS.
8. ALL TRENCH, DRAINAGE STRUCTURE AND OTHER EXCAVATIONS SHALL BE MADE IN STRICT ACCORDANCE WITH OSHA REGULATIONS AND OTHER APPLICABLE FEDERAL, STATE AND LOCAL REGULATIONS, CODE AND ORDINANCES.
9. TEMPORARY ACCESS DRIVES MAY BE REQUIRED DURING CONSTRUCTION IN ORDER TO MAINTAIN ACCESS TO ALL AREAS OF THE SITE, ESPECIALLY WHEN PLACING BUILDING CONCRETE. THE CONTRACTOR SHALL BE RESPONSIBLE FOR KEEPING SOILS SUITABLE FOR REMOVED BY THE GENERAL CONTRACTOR. MEANS FOR KEEPING SOILS SUITABLE FOR REMOVED BY CONTRACTOR'S DISCRETION.

LEGEND	
EXISTING	NEW
PROPERTY LINE	TO BE DEMOLISHED
BUILDING	NEW
ASPHALT SURFACE	CONCRETE
CONCRETE SURFACE	CONCRETE CURB AND GUTTER
CONCRETE CURB AND GUTTER	WATER LINE
WATER LINE	GAS LINE
GAS LINE	SEWER DRAIN
SEWER DRAIN	SAWDRY SLOPE
SAWDRY SLOPE	ASPHALT PAVEMENT
ASPHALT PAVEMENT	UNDER DRAINAGE TELEPHONE
UNDER DRAINAGE TELEPHONE	UNDER DRAINAGE ELECTRICAL
UNDER DRAINAGE ELECTRICAL	UNDER DRAINAGE
UNDER DRAINAGE	TOP OF CURB AND GUTTER
TOP OF CURB AND GUTTER	WATER METER
WATER METER	WATER VALVE
WATER VALVE	GAS METER
GAS METER	GAS VALVE
GAS VALVE	BOLLARD
BOLLARD	PIPE TRENCH
PIPE TRENCH	CONCRETE CURB AND GUTTER
CONCRETE CURB AND GUTTER	LIGHT POLE
LIGHT POLE	SAWDRY SLOPE MARKER
SAWDRY SLOPE MARKER	JUNCTION BOX
JUNCTION BOX	GRATE WALK
GRATE WALK	GRATE WALK
GRATE WALK	CLEANOUT
CLEANOUT	SMOOTH
SMOOTH	TREE

CONTROL POINTS

CONTROL POINT #1
N. 730715.0220
E. 3378407.2180

CONTROL POINT #2
N. 730715.0220
E. 3378160.5217

BENCH MARK

BM 200569.6547 PD
N. 730715.0220
E. 3378407.2180

TBR
ARCHITECTURE
Timothy M. Brandon
103 Cypress Street
West Monroe, LA 71291
Tel. 318.346.1550
Fax. 318.592.1215

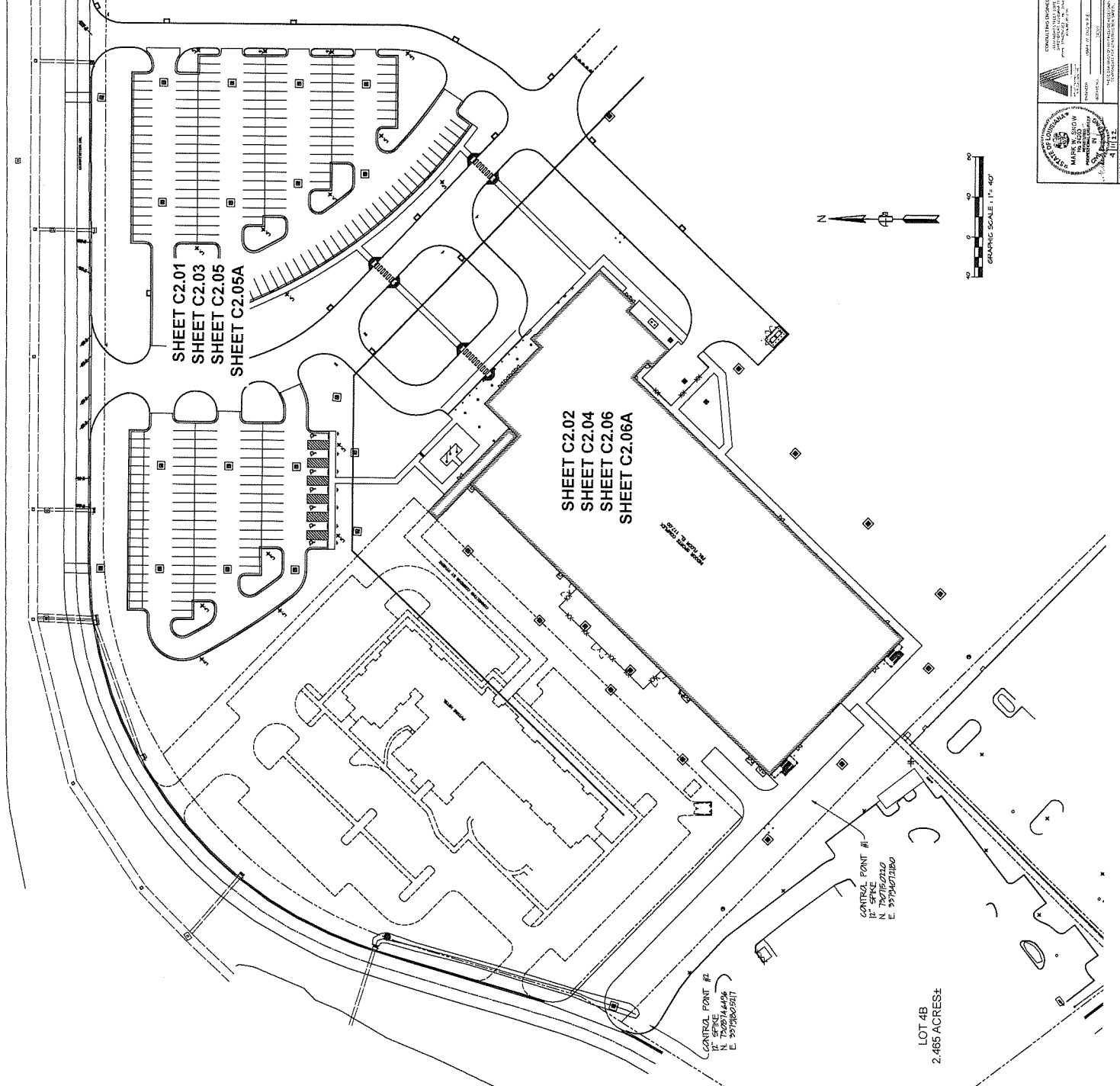
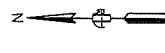
PROJECT:
WEST MONROE INDOOR SPORTS COMPLEX
915 WESTLINGTON DRIVE,
WEST MONROE, LA 71292

DATE	DESCRIPTION

SHEET
C1.01
DESCRIPTION:
21.001
DATE:
4/11/2022

CONTRACTING ENGINEERS
ARCHITECTURAL ENGINEERS
REGISTERED PROFESSIONAL ENGINEERS
STATE OF LOUISIANA
No. 200569.6547 PD
N. 730715.0220
E. 3378407.2180

REGISTERED PROFESSIONAL ENGINEER
STATE OF LOUISIANA
No. 200569.6547 PD
N. 730715.0220
E. 3378407.2180



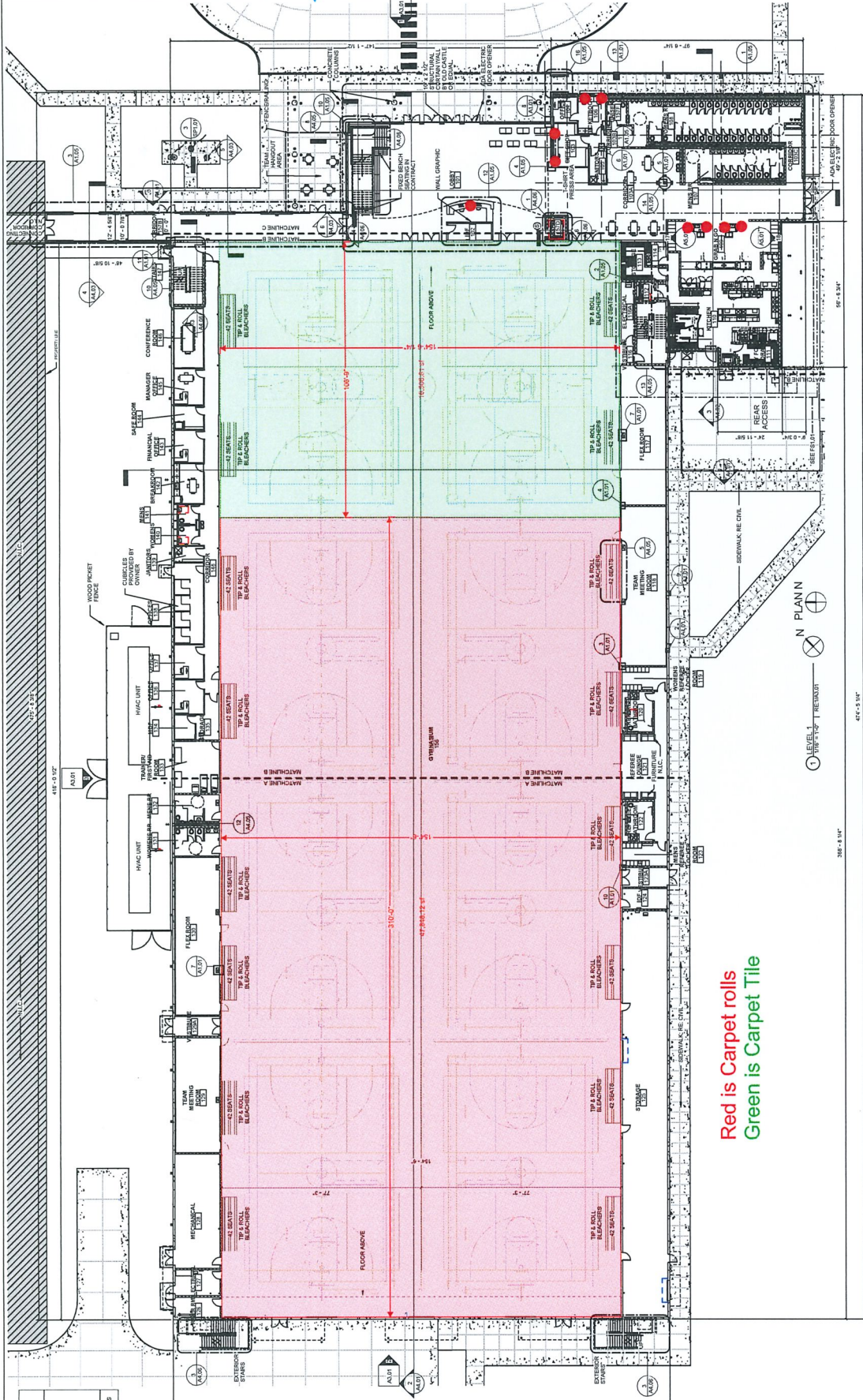
PROJECT: WEST MONROE INDOOR SPORTS COMPLEX
 875 CONSTITUTION DRIVE
 WEST MONROE, LA 71222

TIM BRANDON
 ARCHITECTURE
 103 Cypress Street
 Metairie, LA 70002
 Tel: 918.340.1550
 Fax: 918.588.1315
 www.tbrarch.com

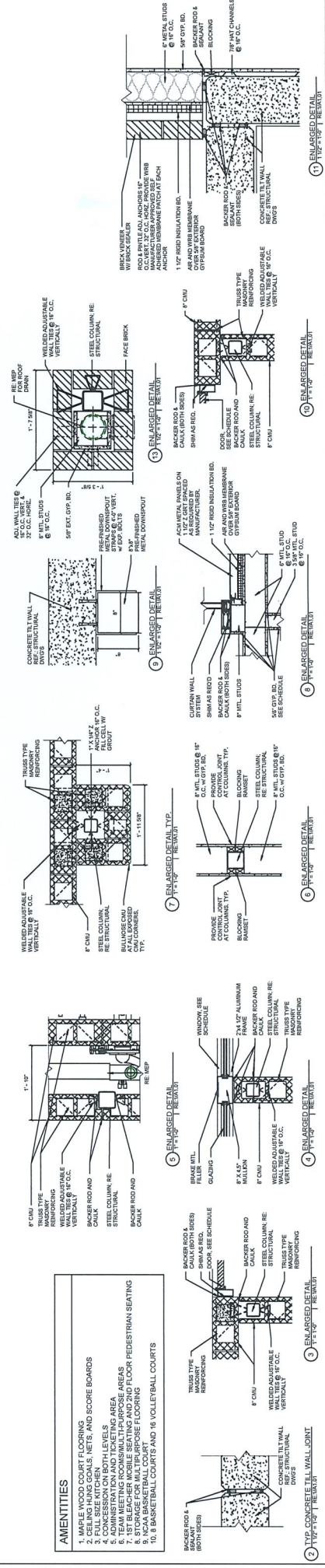


DRAWING REVISIONS	
No.	Description

CV
 SHEET
 KSBMBJAH
 4/11/2022
 2:00P
 DESCRIPTION: FIRST FLOOR PLAN OVERALL



Red is Carpet rolls
 Green is Carpet Tile



WALL LEGEND

- CMU CORE
- METAL STUD CORE
- CONCRETE TILT WALL

REFERS TO EXT. ELEVATIONS FOR EXT. WALL TYPE MATERIALS

GENERAL NOTES

- ALL FINISHES ARE NOT IN CONTRACT AND TO BE CHANGED BY THE OWNER UNLESS NOTED
- ALL DOOR AND WINDOW SCHEDULES TO BE COORDINATED WITH THE ARCHITECT
- ALL DOOR AND WINDOW SCHEDULES TO BE COORDINATED WITH THE ARCHITECT
- ALL DOOR AND WINDOW SCHEDULES TO BE COORDINATED WITH THE ARCHITECT
- ALL DOOR AND WINDOW SCHEDULES TO BE COORDINATED WITH THE ARCHITECT
- ALL DOOR AND WINDOW SCHEDULES TO BE COORDINATED WITH THE ARCHITECT
- ALL DOOR AND WINDOW SCHEDULES TO BE COORDINATED WITH THE ARCHITECT
- ALL DOOR AND WINDOW SCHEDULES TO BE COORDINATED WITH THE ARCHITECT
- ALL DOOR AND WINDOW SCHEDULES TO BE COORDINATED WITH THE ARCHITECT
- ALL DOOR AND WINDOW SCHEDULES TO BE COORDINATED WITH THE ARCHITECT

- AMENITIES**
- MARLE WOOD COURT FLOORING
 - FULL SIZE KITCHEN
 - FULL SIZE KITCHEN
 - CONCESSION ON BOTH LEVELS
 - TEAM MEETING ROOMS/MULTI-PURPOSE AREAS
 - STORAGE FOR MULTIPLE BASKETBALLS
 - STORAGE FOR MULTIPLE BASKETBALLS
 - NCAA BASKETBALL COURT
 10. 8 BASKETBALL COURT AND 15 VOLLEYBALL COURTS

