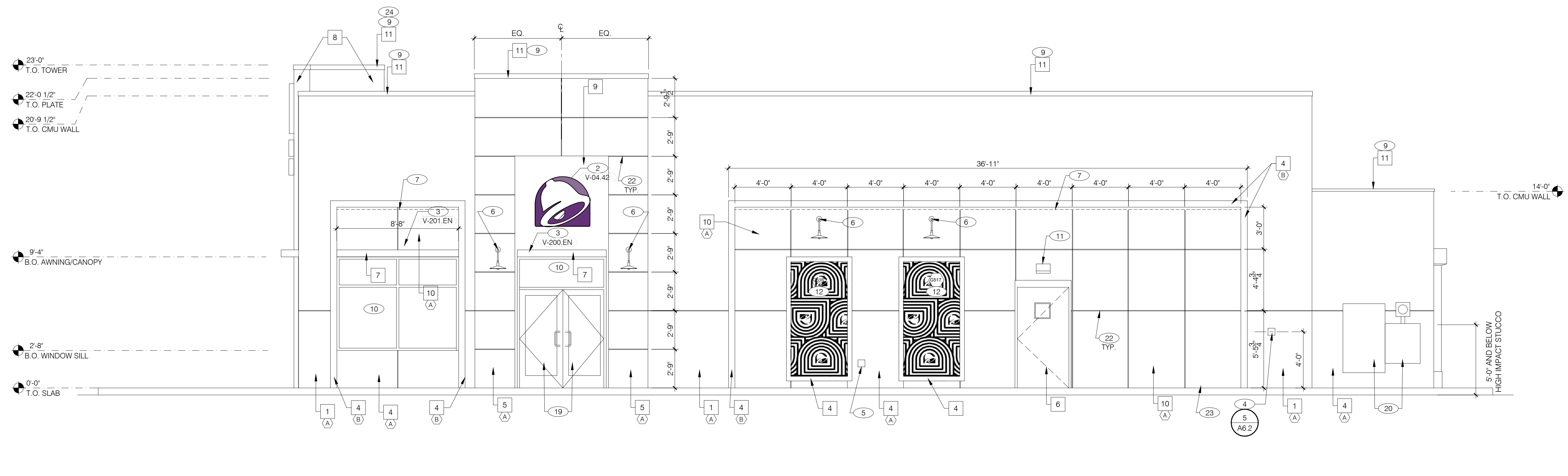
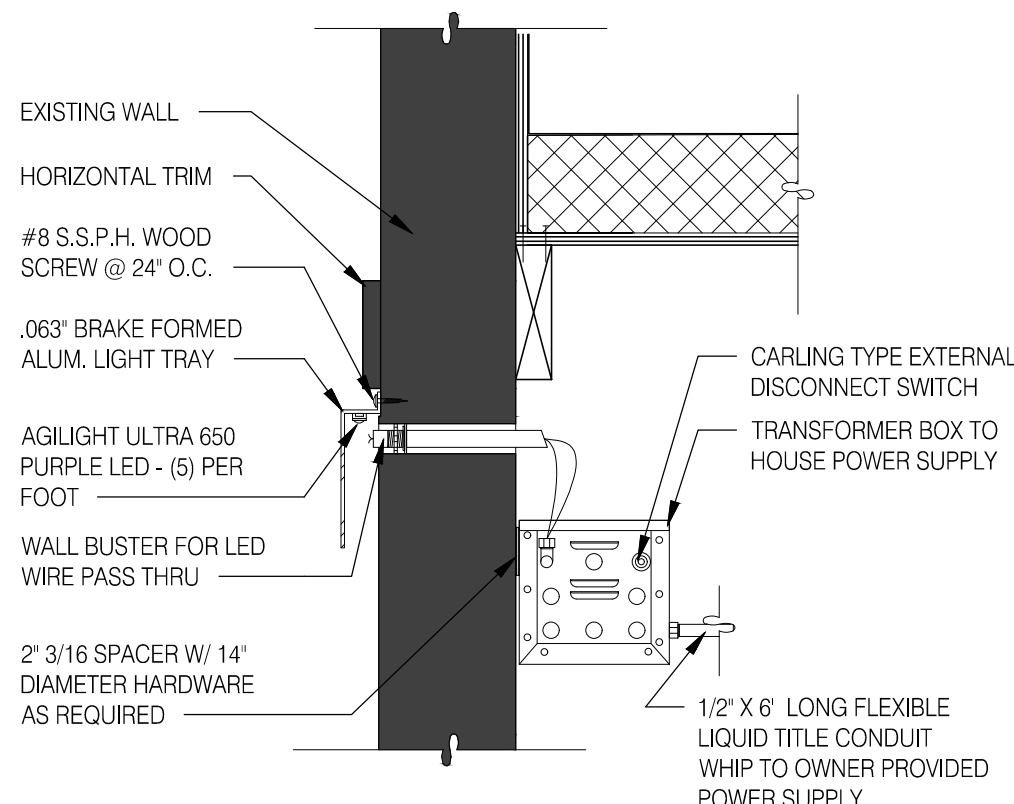


LEE B. MANSKE, AIA
FLORIDA LICENSE NO. AR97470



RIGHT SIDE ELEVATION 1/4"=1'-0" **1**



LED WALL WASHER DETAIL **F**

PAINTING OVER EIFS/STUCCO:
APPLICATOR MUST DO THEIR DUE DILIGENCE WITH PREPARATION.
PRIMER: 1 COAT SW A24W8300, LOXON CONCRETE & MASONRY PRIMER.
FINISH: 2 COATS SW A82-100 SERIES, A-100 EXTERIOR LATEX SATIN.

PAINT NOTES

NOTE: SIGNAGE UNDER SEPARATE PERMIT

V-XXX	QTY	ITEM DESCRIPTION	ELEC
TOWER			
V-04.42	2	42" SWINGING BELL PURPLE LOGO FACE LIT	A4.1
V-09.14W	2	14" WHITE CHANNEL LETTERS VERTICAL	A4.1
SIDE ENTRY			
V-04.42	1	42" SWINGING BELL PURPLE LOGO FACE LIT	A4.0
V-200.EN	1	6'-4" x 6'-3" SIDE ENTRY CANOPY, BLACK	A4.0
DRIVE THRU			
V-101.DT	1	4'-0" x 9'-0" DT CANOPY, BLACK	A4.1
V-101.PP	1	4'-0" x 6'-0" PP CANOPY, BLACK	A4.1
EYEBROW AWNINGS			
V-202.EN	1	16'-8"L x 6"H x 1'-4"D, FRONT EYEBROW, BLACK	A4.1
V-203.EN	1	6'-0"L x 6"H x 1'-4"D, DT EYEBROW, BLACK	A4.1
V-201.EN	1	8'-8"L x 6"H x 1'-4"D, SIDE ENTRY EYEBROW, BLACK	A4.0

SIGNAGE / AWNING SCHEDULE **E**

MISCELLANEOUS
A. SEE SHEET A1.1 "WINDOW TYPES" FOR WINDOW ELEVATIONS.

SEALERS (REFER TO SPECS):
A. SEALANT AT ALL WALL AND ROOF PENETRATIONS.
B. SEALANT AT ALL WINDOW AND DOOR FRAMES AT HEAD AND JAMB. DO NOT SEAL SILL @ WINDOWS.
C. APPLY NEOPRENE GASKET (CONT.) BETWEEN BUILDING & CANOPY.

CRITICAL DIMENSIONS:
A. REQUIRED CLEAR OPENING WIDTH TO ENSURE COORDINATION WITH STANDARD SIGNAGE/ BUILDING ELEMENTS DIMENSIONS.

NOTE: NO EXTERIOR SIGNS ARE WITHIN THE SCOPE OF WORK COVERED BY THE BUILDING PERMIT APPLICATION. THE GENERAL CONTRACTOR SHALL BE RESPONSIBLE FOR COORDINATING THE INSTALLATION OF ALL EXTERIOR SIGNS AND INSTALLATION OF REQUIRED BLOCKING AND ELECTRICAL CONNECTIONS FOR FINAL APPROVED SIGNS.

GENERAL NOTES **C**

X	NAME	FAMILY	FRAME OR MURAL	SIZE	LOCATION
(518)	HYPNOTIZE ME BELL	D	M02	48x96	A4.0
(517)	HYPNOTIZE ME BELL	D	M02	48x96	A4.0
(518)	HYPNOTIZE ME BELL	D	M02	48x96	A4.1

ARTWORK SCHEDULE **A**

- (A) BASE THICKNESS - 5/8" THICK STUCCO
- (B) BASE THICKNESS - 1-5/8" THICK STUCCO

EIFS THICKNESS N.T.S.

SYMBOL	AREA	MANUFACTURER	MATERIAL SPEC.	COLOR	CONTACT INFORMATION
1	MAIN BUILDING COLOR	SHERWIN WILLIAMS		SHERWIN WILLIAMS SW7043 "WORLDLY GRAY", SEMI-GLOSS	SEE C / A 7.2
2	SCUPPERS	-	-	SHERWIN WILLIAMS SW7043 "WORLDLY GRAY", SEMI-GLOSS	
3	DOWNSPOUTS	-	-	SHERWIN WILLIAMS SW7043 "WORLDLY GRAY", SEMI-GLOSS	
4	ACCENT COLOR	SHERWIN WILLIAMS		SHERWIN WILLIAMS SW7076 "CYBERSPACE", SEMI-GLOSS	SEE C / A 7.2
5	SIDE ENTRY PORTAL	SHERWIN WILLIAMS		SHERWIN WILLIAMS SW7076 "CYBERSPACE", SEMI-GLOSS	SEE C / A 7.2
6	HOLLOW METAL DOOR	-	-	SW PURPLE TB2603C & FRAME, SEMI-GLOSS	
7	AWNINGS	SIGNAGE VENDOR	-	BLACK BY THE SIGNAGE VENDOR	
8	CORNER TOWER	SHERWIN WILLIAMS		SHERWIN WILLIAMS SW6356, "COPPER MOUNTAIN", SEMI-GLOSS	
9	RECESS OF SIDE ENTRY PORTAL	SHERWIN WILLIAMS		SHERWIN WILLIAMS SW6356, "COPPER MOUNTAIN", SEMI-GLOSS	SEE C / A 7.2
10	ACCENT COLOR	SHERWIN WILLIAMS		SW PURPLE TB2603C, SEMI-GLOSS	SEE C / A 7.2
11	METAL PARAPET CAP	-	24GA GALVANIZED	SHERWIN WILLIAMS SW7076 "CYBERSPACE" KYNAR 500 COATING	

EXTERIOR FINISH SCHEDULE **D**

- 1 NOT USED
- 2 BUILDING SIGNAGE BY VENDOR. CONTRACTOR TO COORDINATE WITH VENDOR FOR RELATED REQUIREMENTS.
- 3 METAL CANOPY / AWNING BY VENDOR. CONTRACTOR TO COORDINATE WITH VENDOR FOR RELATED REQUIREMENTS.
- 4 CO2 FILLER VALVE & COVER. SEE DETAIL 5/A6.2.
- 5 HOSE BIB BOX AT 18" A.F.F. REFER TO PLUMBING AND DETAIL 8/A6.2.
- 6 LIGHT SCOURCE. REFER. ELEC. DRAWINGS.
- 7 PURPLE LIGHT WALL WASHER, PROVIDED BY SIGNAGE VENDOR.
- 8 NOT USED
- 9 METAL PARAPET CAP. SEE DETAIL 2/A6.0.
- 10 DRIVE THRU / STOREFRONT WINDOW. SEE SHEET A1.0 & A1.1.
- 11 WALL PACK LIGHT FIXTURE. REF. ELEC. DRAWINGS.
- 12 EXTERIOR EXPRESSION PANEL.
- 13 ASSUME D/T LANE SURFACE IS 6" BELOW THE FINISH FLOOR. REFER TO GRADING & SITE PLAN.
- 14 NOT USED
- 15 SCUPPER, COLLECTOR, AND VERTICAL DOWNSPOUT 6" MIN. PAINT TO MATCH ADJACENT WALL.
- 16 CONCRETE CURB. REF. CIVIL.
- 17 OVERFLOW SCUPPER, SEE ROOF PLAN.
- 18 BOLLARD, PAINT CAUTION YELLOW; REF CIVIL.
- 19 STOREFRONT DOOR. REFER TO DOOR SCHEDULE.
- 20 ELECTRICAL GEAR. RE. ELECTRICAL DRAWINGS.
- 21 NOT USED.
- 22 STUCCO GROOVE. SEE DETAIL 20/A6.2 (TYP.).
- 23 NOT USED
- 24 TOWER BEYOND

KEY NOTES **B**

18332R22010

- 07.17.23 CIVIL COORDINATION
- 12.21.23 ELEVATION COORDINATION

CONTRACT DATE: 06.08.2023
 BUILDING TYPE: END. MED40
 PLAN VERSION: XX.XX.XXXX
 SITE NUMBER: XXXXXX
 STORE NUMBER:

TACO BELL
 SEMINOLE PRATT WHITNEY RD.
 WESTLAKE, FL



ENDEAVOR 2.0

EXTERIOR ELEVATIONS

A4.0