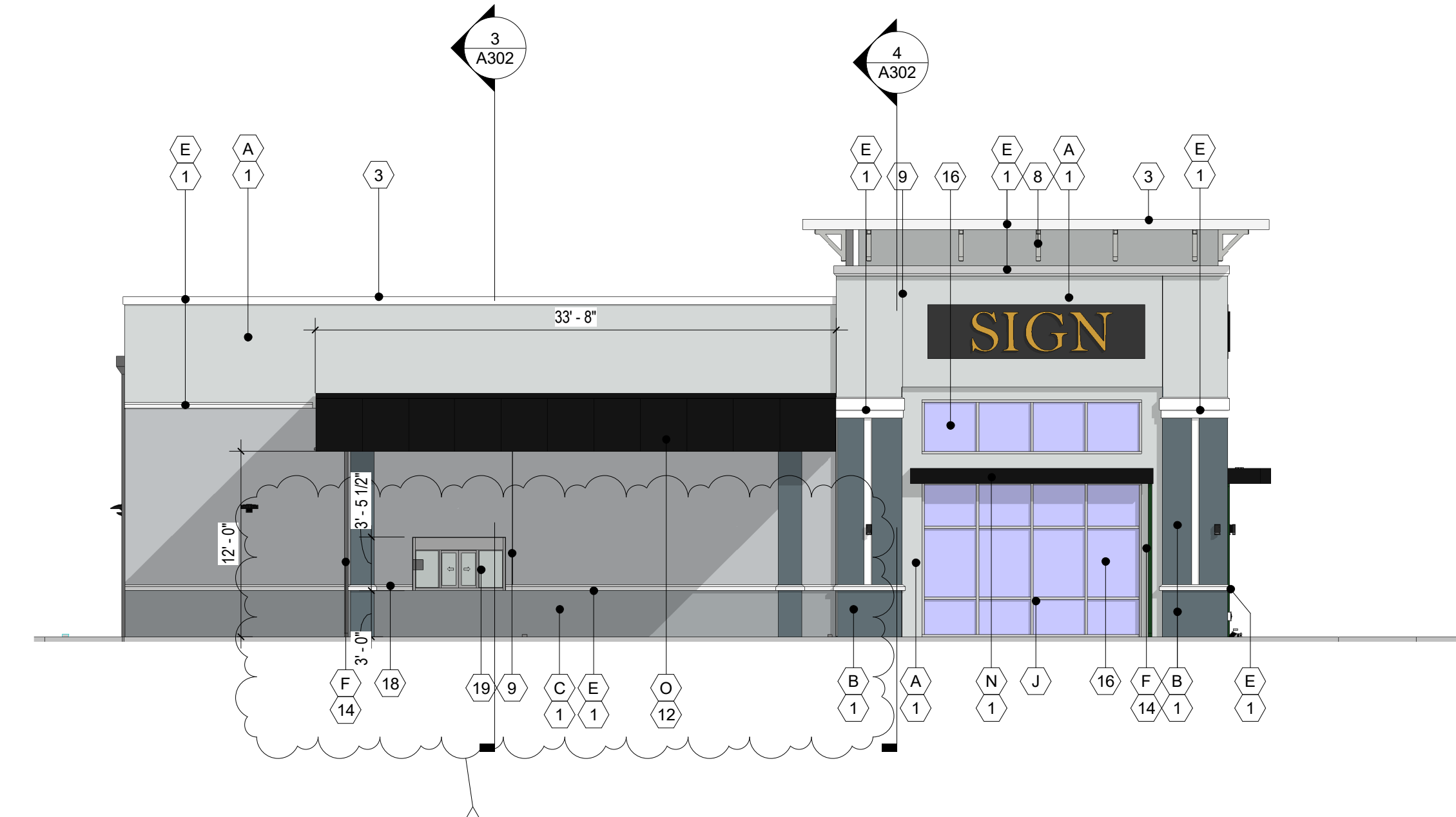
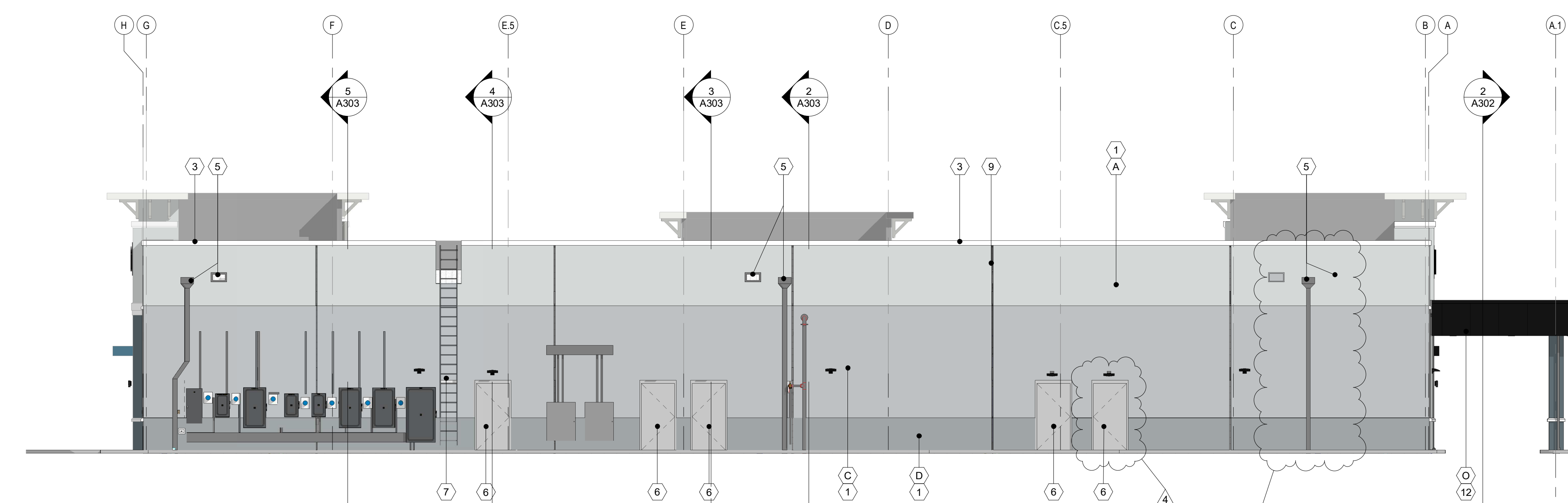


4 East Elevation
SCALE: 1/8" = 1'-0"



3 South Elevation
SCALE: 1/8" = 1'-0"



2 West Elevation
SCALE: 1/8" = 1'-0"



1 North Elevation
SCALE: 1/8" = 1'-0"

- GENERAL NOTES:
- FOR ADDITIONAL INFORMATION ON STOREFRONTS, SEE ENLARGED STOREFRONT ELEVATIONS SHEET.
 - FOR ADDITIONAL INFORMATION ON DOORS, SEE THE DOOR SCHEDULE SHEET.
 - FOR ADDITIONAL INFORMATION ON EXTERIOR FINISHES, SEE ASSEMBLY DETAILS SHEET.
 - PROVIDE FRIT 2X BLOCKING IN STUD SPACE AT ALL EXTERIOR LIGHT FIXTURES, RE ELECTRICAL.
 - G.C. TO VERIFY ALL ROUGH OPENINGS FOR BANK EQUIPMENT PRIOR TO CONSTRUCTION. REPORT ANY DISCREPANCIES TO THE ARCHITECT/OWNER.

Color and Material Schedule

TYPE	MATERIAL/FINISH	COLOR	NOTES	KEYNOTES
(A)	SANDEBBLE TEXTURE	SW 6253 - OLYMPIUS WHITE		MARK NOTE
(B)	SANDEBBLE TEXTURE	SW 7624 - SLATE TILE		(1) STUCCO SYSTEM; RE: FLORIDA PRODUCT APPROVALS SHEET G101
(C)	SANDEBBLE TEXTURE	SW 6254 - LAZY GREY		(2) 6" REVEAL TO BE PAINTED SW 7006 - EXTRA WHITE
(D)	SANDEBBLE TEXTURE	SW 7073 - NETWORK GREY		(3) PRE-FINISHED METAL ROOF EDGE TRIM; RE ROOF DETAILS
(E)	SANDEBBLE TEXTURE	SW 7006 - EXTRA WHITE		(4) PRE-FABRICATED, ENGINEERED CANOPY; RE DELEGATED DESIGN NOTE ON COVER
(F)	PRE-FINISHED, METAL	MATCH ADJACENT COLOR		(5) PRE-FINISHED DOWNSPOUT / OVERFLOW WITH TAPERED CONDUCTOR HEADS
(G)	SHOP-PRIMED, FIELD PAINTED	MATCH ADJACENT COLOR	SEE DOOR FINISH NOTE ON A601	(6) HOLLOW METAL DOOR (IMPACT RATED)
(H)	PRE-FINISHED RAINHOOD	MATCH ADJACENT COLOR		(7) ROOF ACCESS LADDER - RE: A5084
(I)	POWDER-COATED ALUMINUM	RAL 5024 - PASTEL BLUE		(8) ALUMINUM BRACKET, COLOR TO MATCH SW 7006 - EXTRA WHITE
(J)	POWDER-COATED ALUMINUM	RAL 9005 - JET BLACK		(9) CONTROL JOINTS, ALIGN WITH EDGES OF OPENINGS UNLESS NOTED OTHERWISE. ALL CONTROL JOINTS TO BE VERTICAL OR HORIZONTAL AND BE SQUARE TO THE MAJOR ELEMENTS OF THE BUILDING.
(L)	FIELD PAINTED	SW 7006 - EXTRA WHITE		(10) LIGHT FIXTURES RE ELECTRICAL WHERE LOCATED ON PLASTER, LIGHT FIXTURES TO BE CENTERED ON THE WIDTH OF THE PLASTER TYP.
(M)	FIELD PAINTED	SW 6254 - LAZY GREY		(11) NOT USED
(N)	FIELD PAINTED	TBD	BLACK	(12) DRIVE THRU CANOPY
(O)	SHOP POWDER COATED FINISH	TBD	BLACK	(13) NOT USED
				(14) CANOPY DOWNSPOUT
				(15) NOT USED
				(16) STOREFRONT CLEAR GLAZING (IMPACT RATING)
				(17) NOT USED
				(18) NOT USED
				(19) DRIVE THRU WINDOW
				(20) PREFINISHED METAL PANEL SYSTEM

REVISION / ISSUE HISTORY

REV	DATE	REVISION / ISSUE NAME
1	11-15-2022	VE
2	6-09-2023	TD Bank Tenant Revision
3	07-03-2023	REVISION 3
4	03-06-2024	CHIPOTLE DR CHGS

PROJECT NO 2210356	DRAWN BY TG, PP, GL
PERMIT SUB DATE 3/29/2022	CHECKED BY M.JN, CB

PROJECT
SHOPPES OF WESTLAKE LANDINGS BUILDING B-1
4951 SEMINOLE PRATT WHITNEY RD
WESTLAKE, FL 33470

CLIENT
DKC WESTLAKE LANDINGS, LLC
431 FAIRWAY DRIVE, SUITE 201
DEERFIELD BEACH, FL 33441

SHEET TITLE
Exterior Elevations

SHEET NO
A201