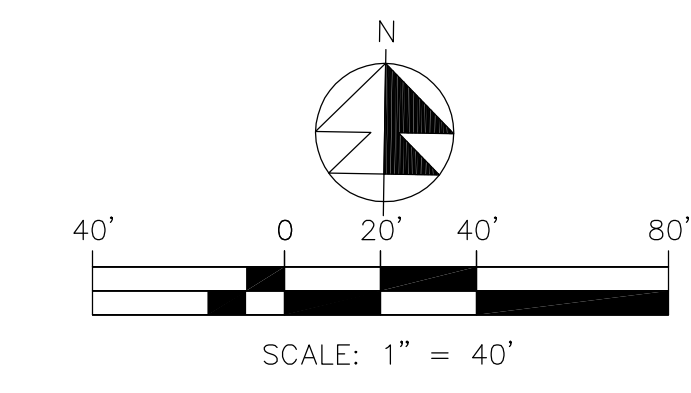


SECTION 43 TOWNSHIP 38S RANGE 41E



REVISIONS	
04-13-21	REV PER SP

Jeff H. Iravani, Inc.
Consulting Engineers

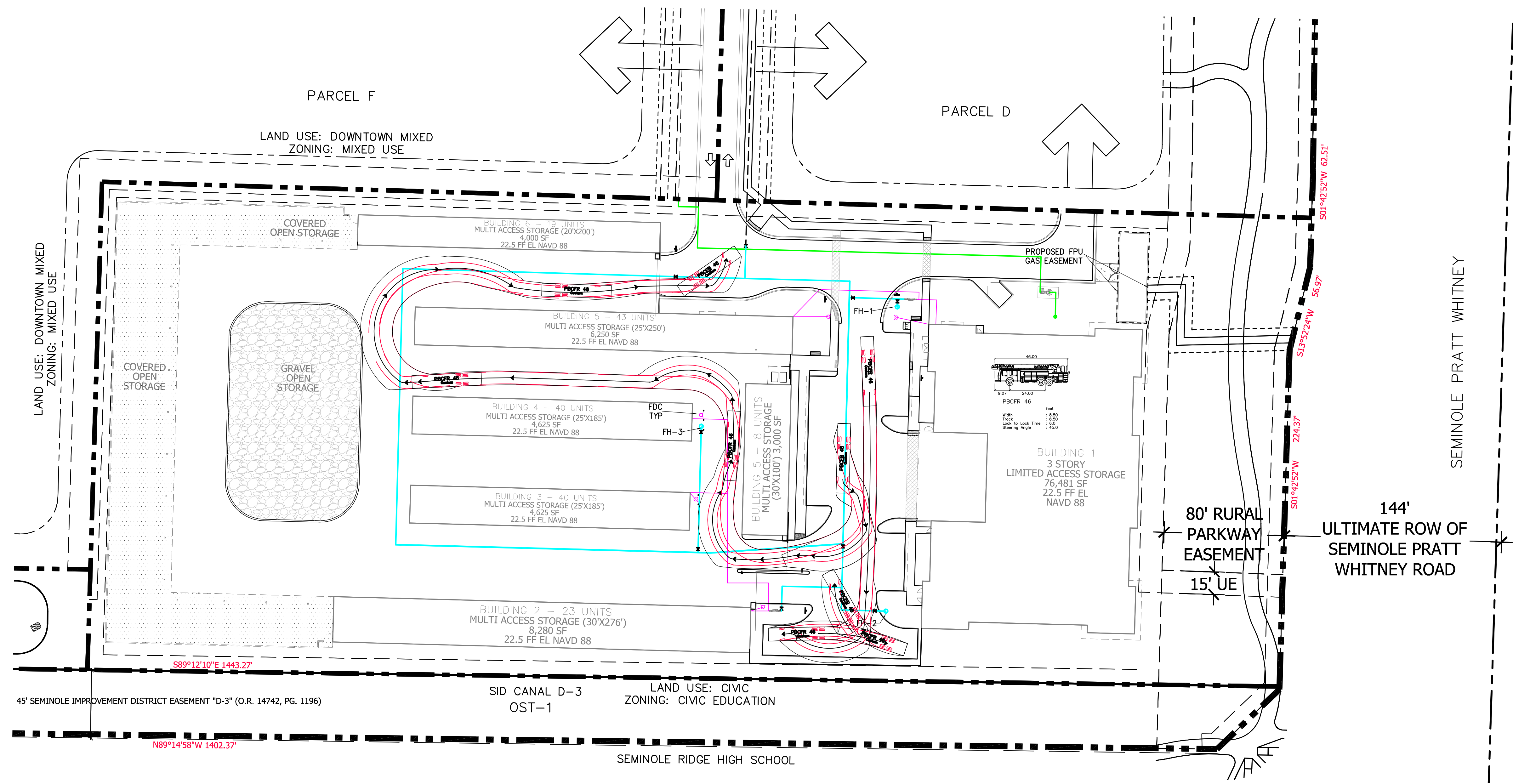
1834 COMMERCE LANE, SUITE 5
JUPITER, FLORIDA 33458
TEL: (561) 575-6030
FAX: (561) 575-6088
EMAIL: jh@jhsouth.net
WEBSITE: www.jhinc.com

Westlake Landings
Pinnacle Self Storage
of Westlake, LLC

Palm Beach County, Florida

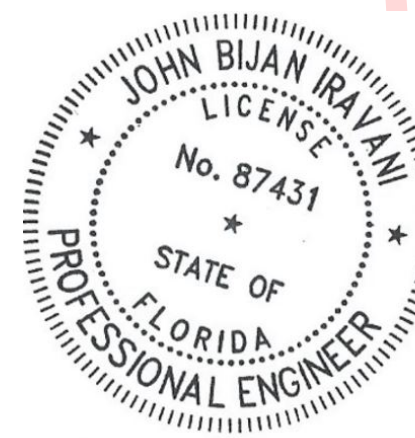
Fire Truck Routing			
DATE	DESIGNED BY	DRAWN BY	JOB NO.
03/11/2021	JBI	JBI	2103-1362
SCALE	1:40		

COA # 6986
SHEET NO.
FT-1



SEMINOLE PRATT WHITNEY

80' RURAL PARKWAY EASEMENT
15' UE
144' ULTIMATE ROW OF SEMINOLE PRATT WHITNEY ROAD
80' RURAL PARKWAY EASEMENT



John Iravani PE
2021.04.16
12:32:13
-04'00'

LEGEND	
Ø 19.7	PROP PAVT EL
FH	FIRE HYDRANT
EXIST EL	EXIST EL
CONTRACTOR TO	CONTRACTOR TO
FIELD VERIFY	FIELD VERIFY
INVERT EL	INVERT EL
CATCH BASIN	CATCH BASIN
YD	YARD DRAIN
BC	BOTTOM OF CURB
BE	BOTTOM EL
TC	TOP OF CURB
TE	TOP EL
EXF	EXFILTRATION TRENCH
WM	WATER MAIN
FM	FORCE MAIN
FIM	FIRE MAIN
WW	WASTEWATER GRAVITY
FH	FIRE HYDRANT
GV	GATE VALVE
CV	CHECK VALVE
DD	DOUBLE DETECTOR
CV	CHECK VALVE
WM	WATER METER W/ REDUCED PRESSURE BACKFLOW PREV.
SP	SAMPLE POINT
MES	MITERED END SECTION
F.F.EL	FIN FLOOR ELEV
F.L.EL	FLOW LINE ELEV
TOB	TOP OF BANK
TOS	TOE OF SLOPE
TOC	TOP OF CONCRETE
TV	TAPPING VALVE
CO	CLEANOUT
B1	BORING NO. AND LOCATION

48 HOURS BEFORE DIGGING
CALL TOLL FREE
811
CALL SUNSHINE
NOTIFICATION CENTER

This item has been electronically signed and sealed by John Bijan Iravani using a 3rd Party Authentication Code. Printed copies of this document are not considered signed and sealed and the 3rd Party authentication code must be verified on any electronic copies.