

Grove Market Façade Upgrade Project Narrative Petition No. SPM-2021-02

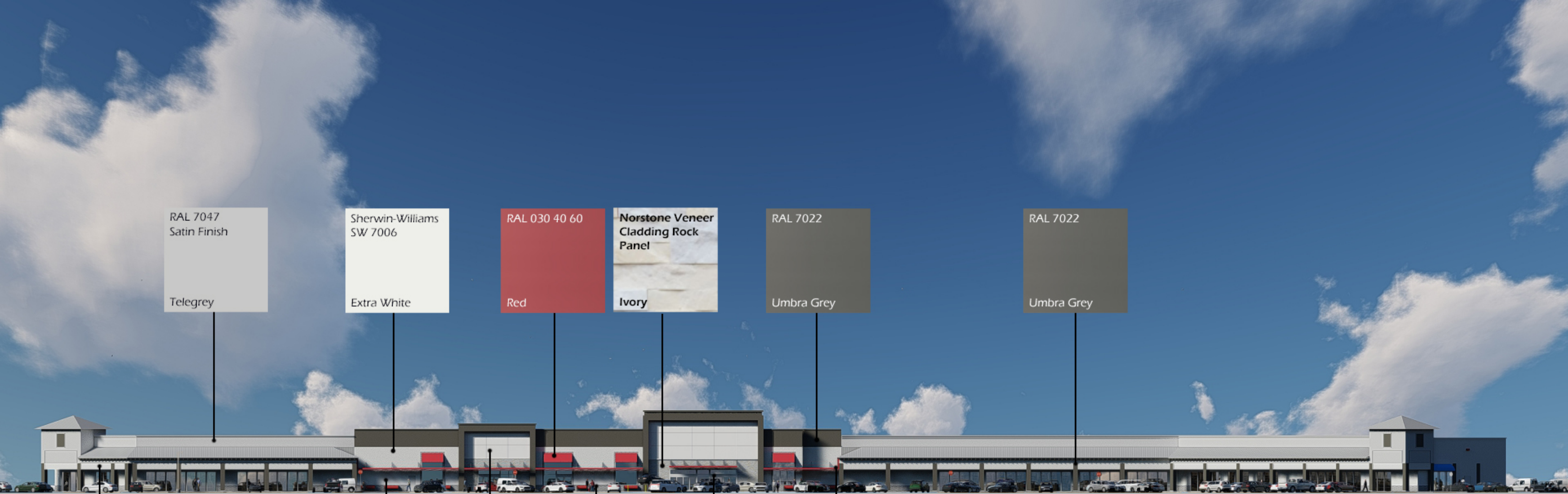
Grove Market Shopping Center was constructed by Stiles Corp in 1999 with the anchor space being built to suit for Winn-Dixie. Winn-Dixie operated at the center until the summer of 2010, closing after sales declined with the opening of the Publix ~2.5 miles to the North. 5060 Loxahatchee Retail, LLC acquired the center in September of 2016 and has owned the property since.

Although dark, Winn-Dixie remained a tenant of the center until February 2018 when the lease was terminated in association with the company's bankruptcy filing. Winn-Dixie emerged from bankruptcy with a clean balance sheet and strong growth plan with new, modern, clean stores. Winn-Dixie signed a new lease to return to the shopping center in December of 2020.

5060 Loxahatchee Retail, LLC is proposing to upgrade the façade of the retail portions of the center to compliment the Winn Dixie improvements that are submitted under a separate application. Specific improvements related to this application include the following:

- Patch/repair and paint the upper sign band.
- Scrape/sand/prime and paint existing metal awnings.
- Remove existing latticework on awning façade, patch/repair and paint awning façade area and columns.
- Patch/repair and paint existing storefront wall.
- Scrape/sand/prime and paint all storefront window and doorframes and mullions.

Additional detail is provided on the enclosed rendering/color board.



RAL 7047
Satin Finish

Telegrey

Sherwin-Williams
SW 7006

Extra White

RAL 030 40 60

Red

Norstone Veneer
Cladding Rock
Panel

Ivory

RAL 7022

Umbra Grey

RAL 7022

Umbra Grey

Sherwin-Williams
SW 7006

Extra White

Sherwin-Williams
SW 7006

Extra White

Kingspan Panel
System
Weather XL

Imperial White

Coronado
Urbana Split

Grey Granite

RAL 7047
Satin Finish

Telegrey

RAL 030 40 60

Red