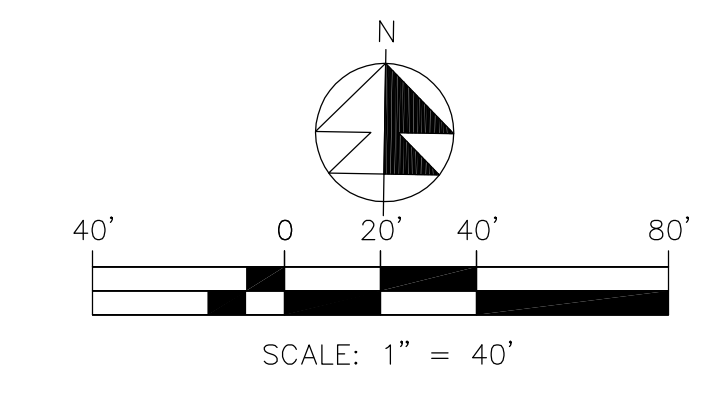
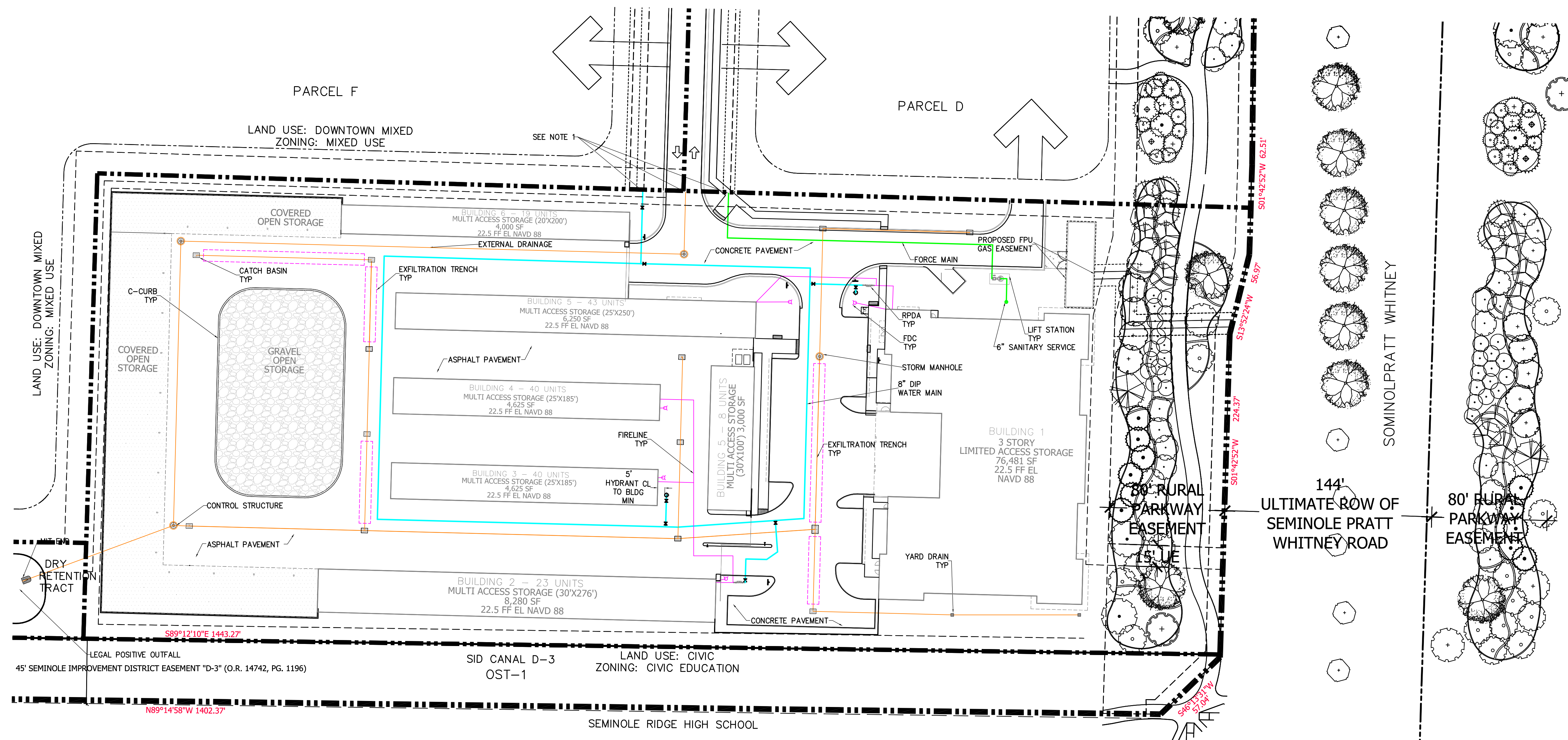


SECTION 43 TOWNSHIP 38S RANGE 41E



NOTES:
1. LOCATIONS OF WATER, WASTEWATER & DRAINAGE STUBS TO BE FINALIZED ONCE ACCESS ROAD PLANS HAVE BEEN COMPLETED (PLANS BY OTHERS).



John Iravani
PE
2021.03.24
17:00:24
-04'00'

LEGEND	
Ø19.7	PROP. PAV'T EL.
EXIST	EXIST. EL.
CONTRACTOR TO FIELD VERIFY	CONTRACTOR TO FIELD VERIFY
INV EL	INVERT EL.
CB	CATCH BASIN
YD	YARD DRAIN
BC	BOTTOM OF CURB
BTM EL	BOTTOM EL.
TC	TOP OF CURB
TE	TOP EL.
EXF	EXFILTRATION TRENCH
WM	WATER MAIN
FM	FORCE MAIN
FIM	FIRE MAIN
WM	WASTEWATER GRAVITY
FM	FIRE HYDRANT
GV	GATE VALVE
GV	GATE VALVE
SIAM	SIAMSE CONN.
CV	CHECK VALVE
DD	DOUBLE DETECTOR
CV	CHECK VALVE
WM	WATER METER W/ REDUCED PRESSURE BACKFLOW PREV.
SP	SAMPLE POINT
MES	MITERED END SECTION
FF EL	FIN FLOOR ELEV.
FLEL	FLOW LINE ELEV.
TDB	TOP OF BANK
TDS	TOP OF SLOPE
TDC	TOP OF CONCRETE
TV	TAPPING VALVE
CD	CLEANOUT
B1	BORING NO. AND LOCATION

48 HOURS BEFORE DIGGING CALL TOLL FREE
811
CALL SUNSHINE NOTIFICATION CENTER

REVISIONS

Jeff H. Iravani, Inc.
Consulting Engineers
1834 COMMERCE LANE, SUITE 5
JUPITER, FLORIDA 33458
TEL: (561) 575-6030
FAX: (561) 575-6088
EMAIL: jh@jeffiravani.com
WEBSITE: www.jhifc.com

Westlake Landings
Pinnacle Self Storage
of Westlake, LLC
Palm Beach County, Florida

DATE	SCALE	DESIGNED BY	DRAWN BY	JOB NO.
03/11/2021	1:40	JBI	JBI	2103-1362

Conceptual Improvement Plan

SEAL
COA # 6986 SHEET NO. CI-1

This item has been electronically signed and sealed by John Bijan Iravani using a SHA Authentication code. Printed copies of this document are not considered signed and sealed and the SHA authentication code must be verified on any electronic copies.