

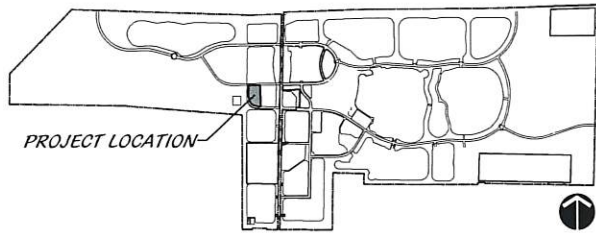
**LEGEND**

- |                         |      |                               |
|-------------------------|------|-------------------------------|
| RIGHT OF WAY            | CL   | CENTER LINE                   |
| ACRES                   | SW   | SIDEWALK                      |
| UTILITY EASEMENT        | PBC  | PALM BEACH COUNTY             |
| DRAINAGE EASEMENT       | LME  | LAKE MAINTENANCE EASEMENT     |
| LANDUSE                 | WMT  | WATER MANAGEMENT TRACT        |
| LANDSCAPE BUFFER        | RPE  | RURAL PARKWAY EASEMENT        |
| LIMITED ACCESS EASEMENT | SPW  | SEMINOLE PRATT WHITNEY        |
| EASEMENT                | PBW  | PERSIMMON BLVD. WEST          |
| TYPICAL                 | LSEV | LOW SPEED ELECTRIC VEHICLE    |
| HANDICAP                | SID  | SEMINOLE IMPROVEMENT DISTRICT |
| RADIUS                  |      |                               |

48 HOURS BEFORE DIGGING  
CALL TOLL FREE  
**811**  
SUNSHINE STATE ONE CALL  
OF FLORIDA, INC.

NOTE: CONTRACTOR TO HAND DIG WITHIN 3' OF ALL MARKED UTILITIES TO VERIFY ACTUAL LOCATION OF UNDERGROUND LINES PRIOR TO PLANTING.

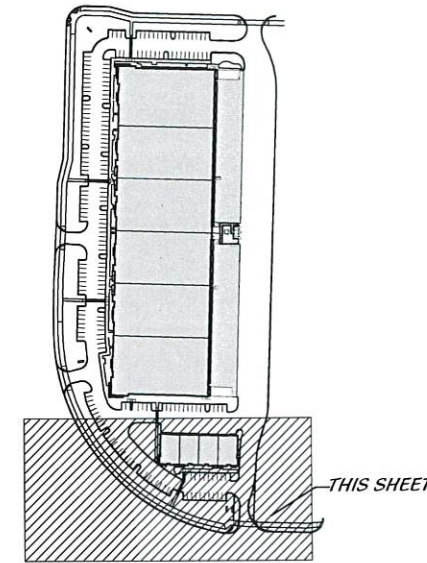
**KEY MAP**



**LOCATION MAP**

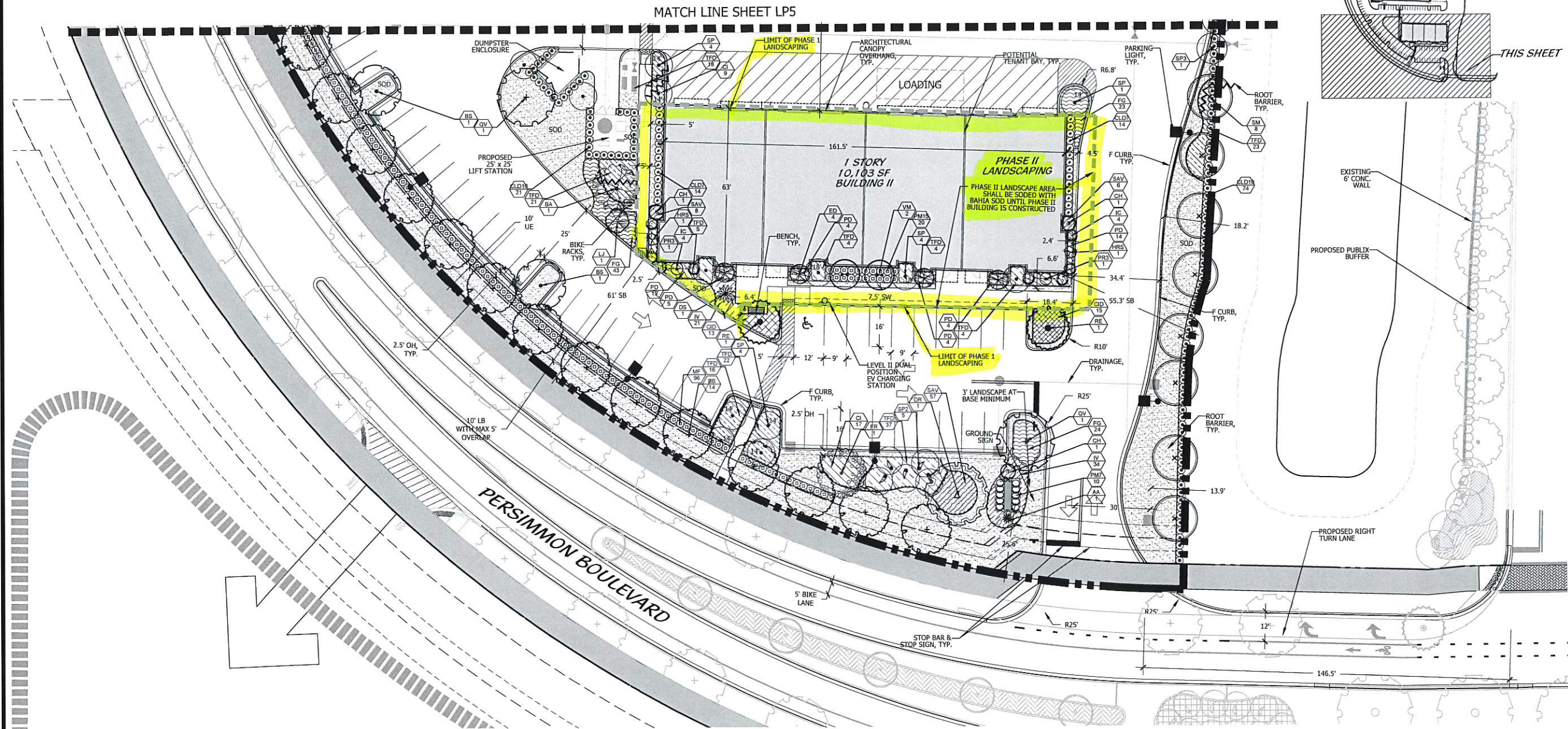


**SHEET MAP**

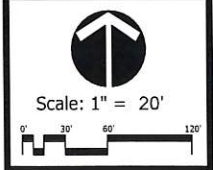


**Cotleur & Hearing**  
Landscape Architects  
Land Planners  
Environmental Consultants  
1934 Commerce Lane  
Suite 1  
Jupiter, Florida 33458  
561.747.6336 - Fax 747.1377  
www.cotleurhearing.com  
Lic# LC-26000535

*James Business Park*  
POD G WEST  
PALM BEACH COUNTY, FL



DESIGNED	DEH
DRAWN	JCO
APPROVED	DEH
JOB NUMBER	13-0518.98.01
DATE	04-27-22
REVISIONS	05-18-22



May 18, 2022 1:29: p.m.  
Drawing: 13-0518.98.01 LP.DWG

**LANDSCAPE PLAN**