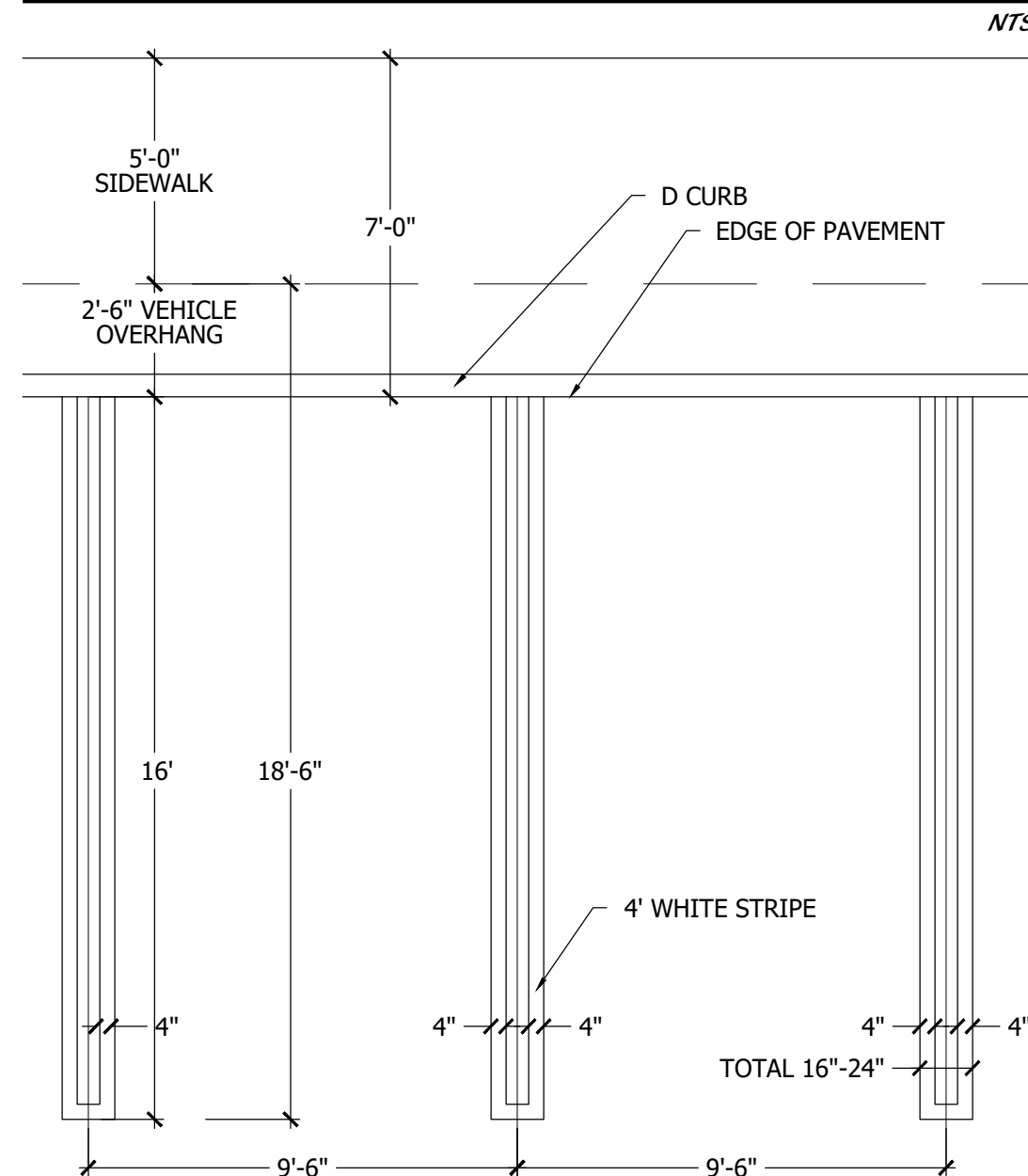
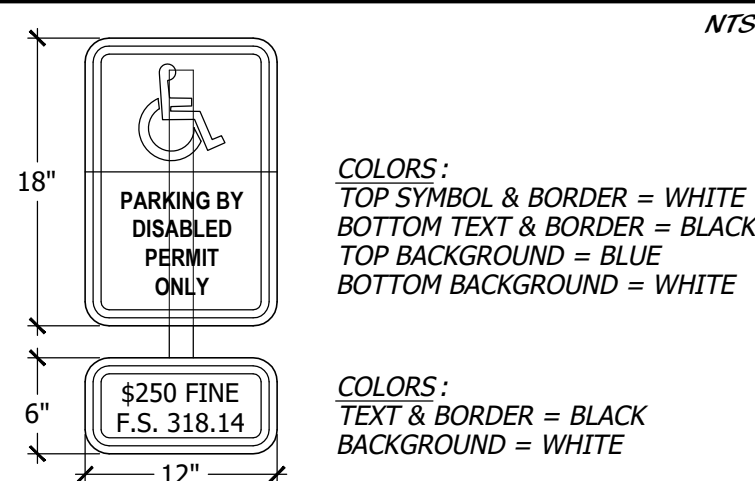


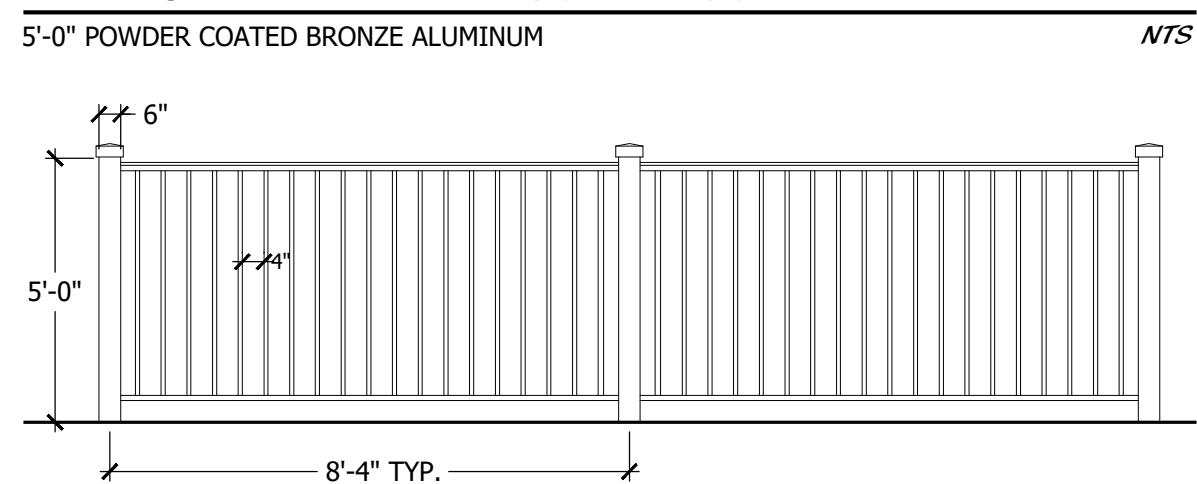
STANDARD PARKING DETAIL



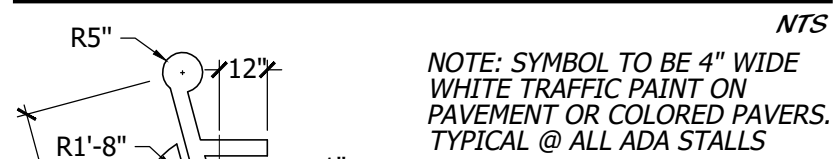
ADA SIGN DETAIL



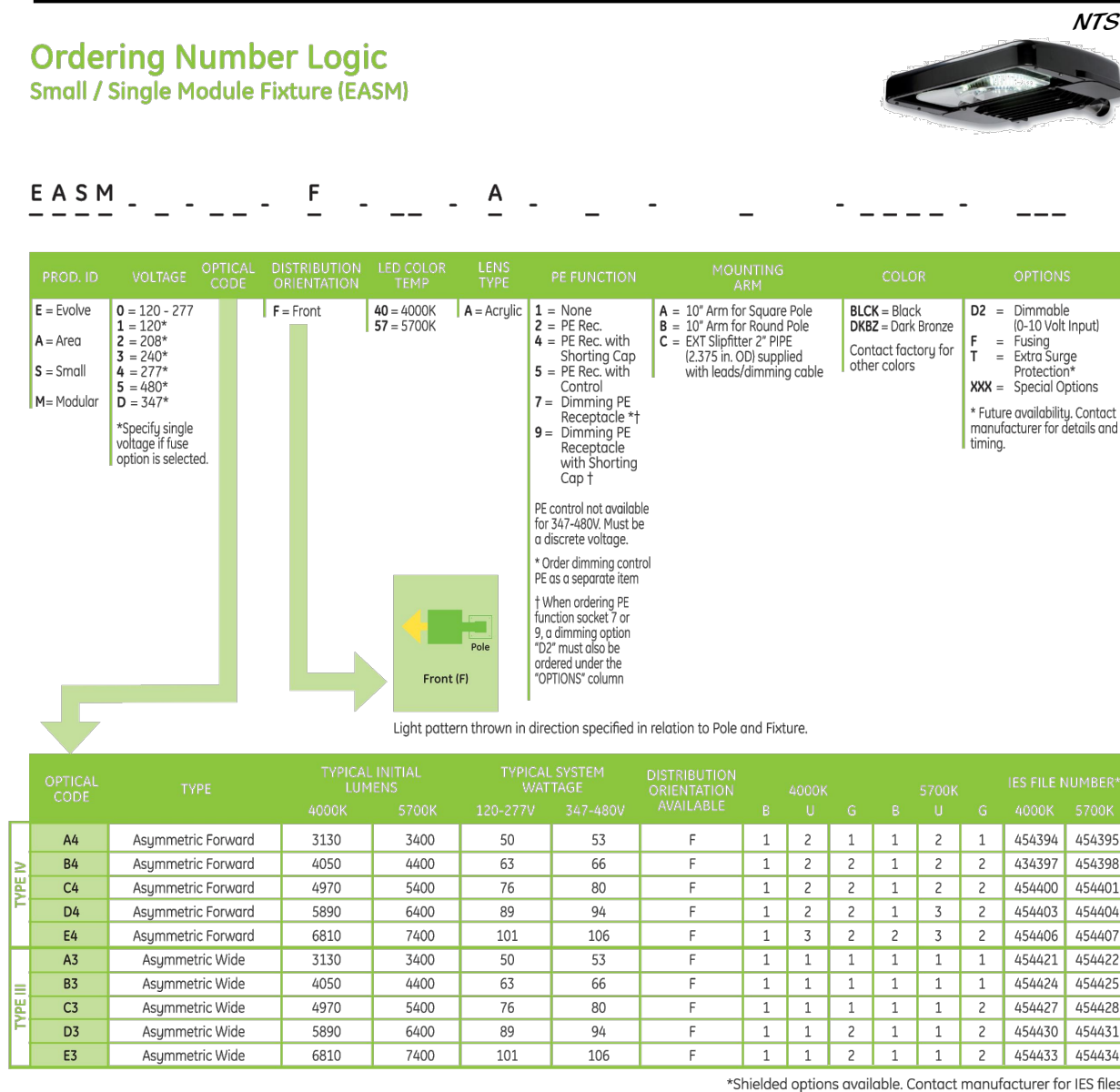
DECORATIVE ALUMINUM FENCE



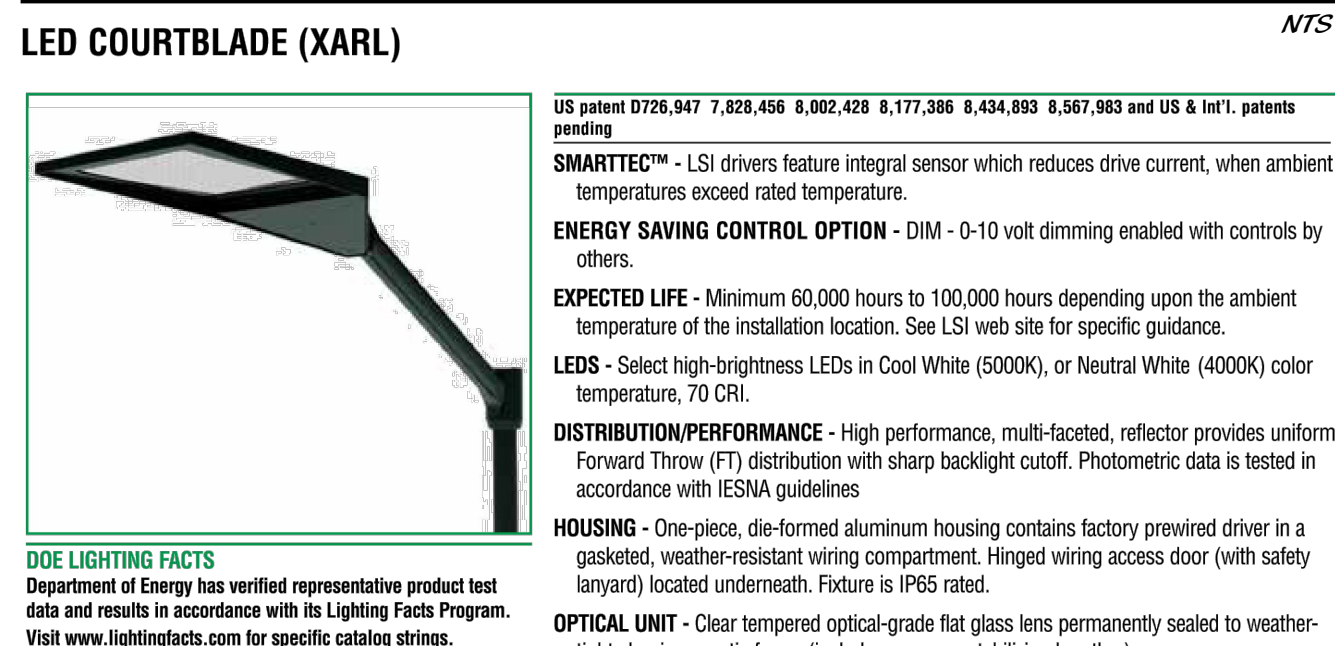
ADA SYMBOL DETAIL



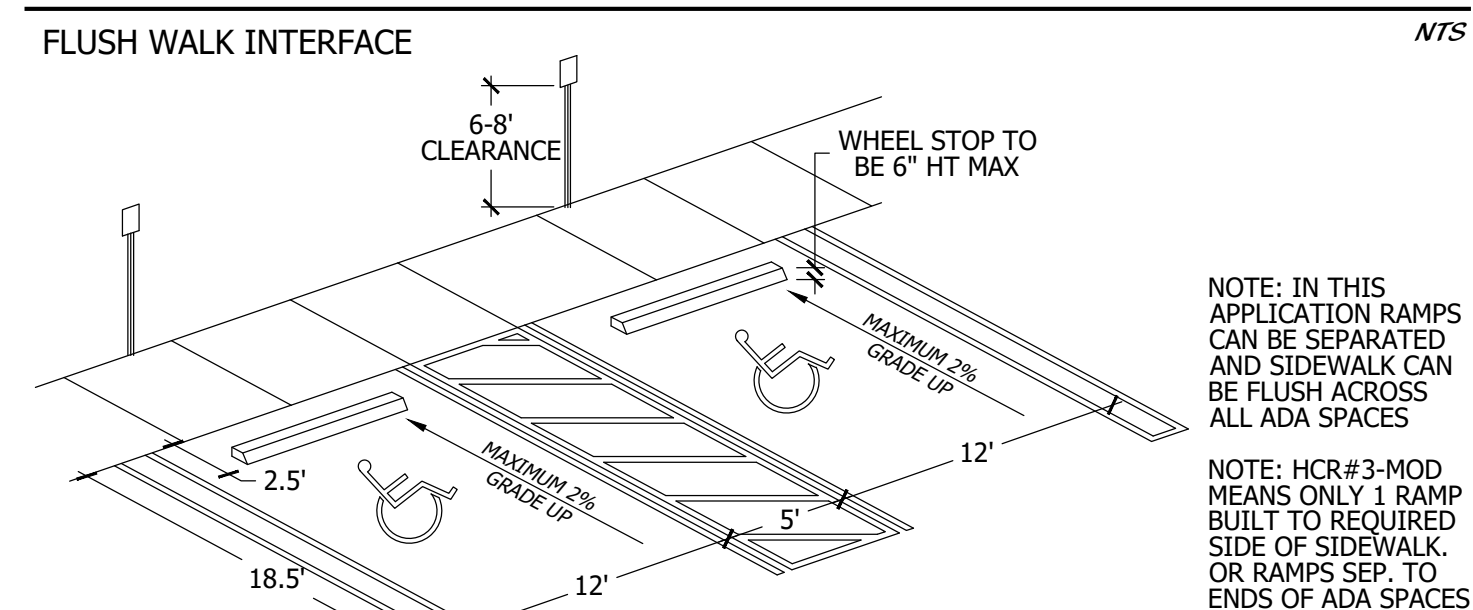
PARKING LOT LIGHT DETAIL



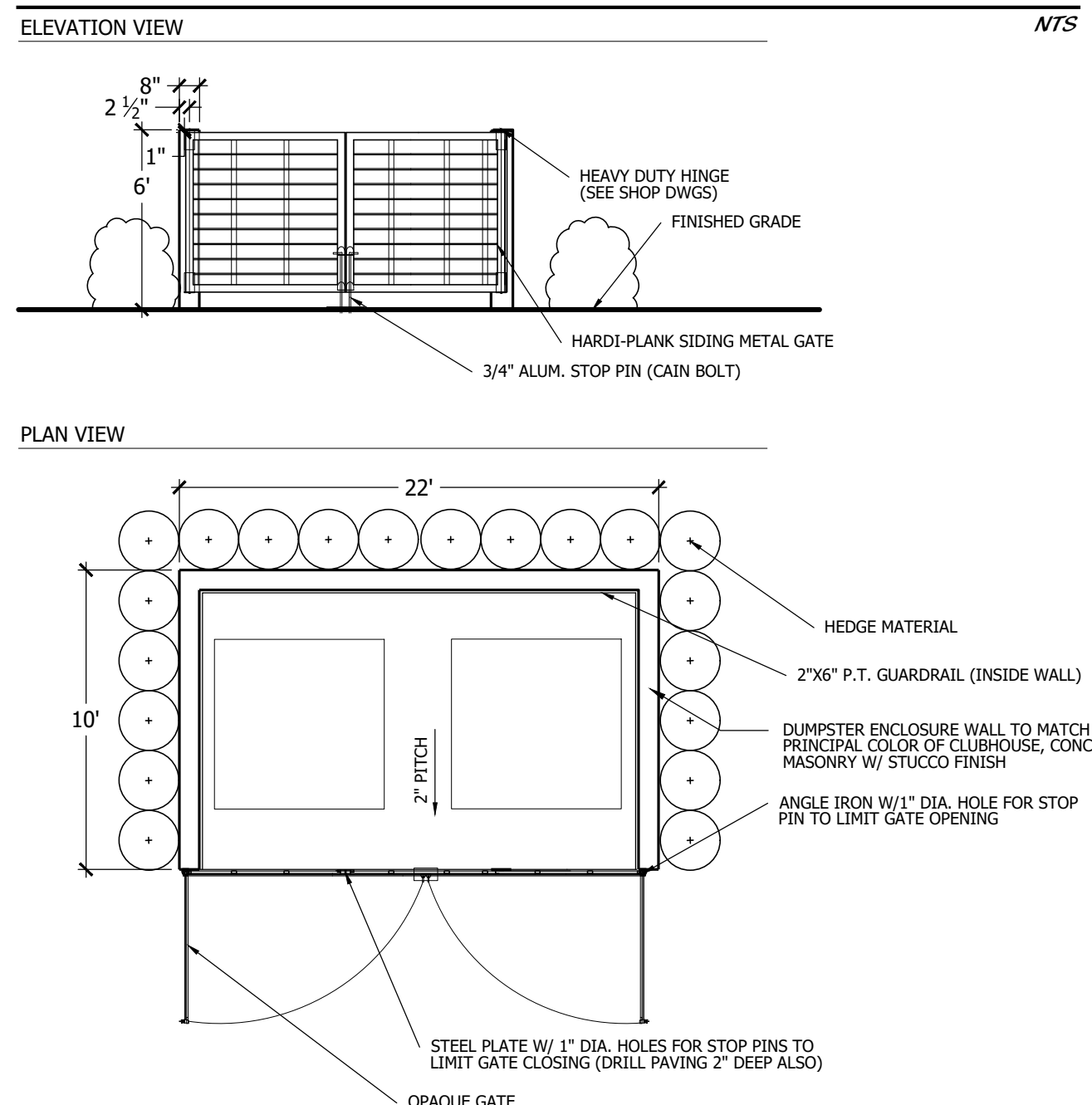
SPORTS COURT LIGHT DETAIL



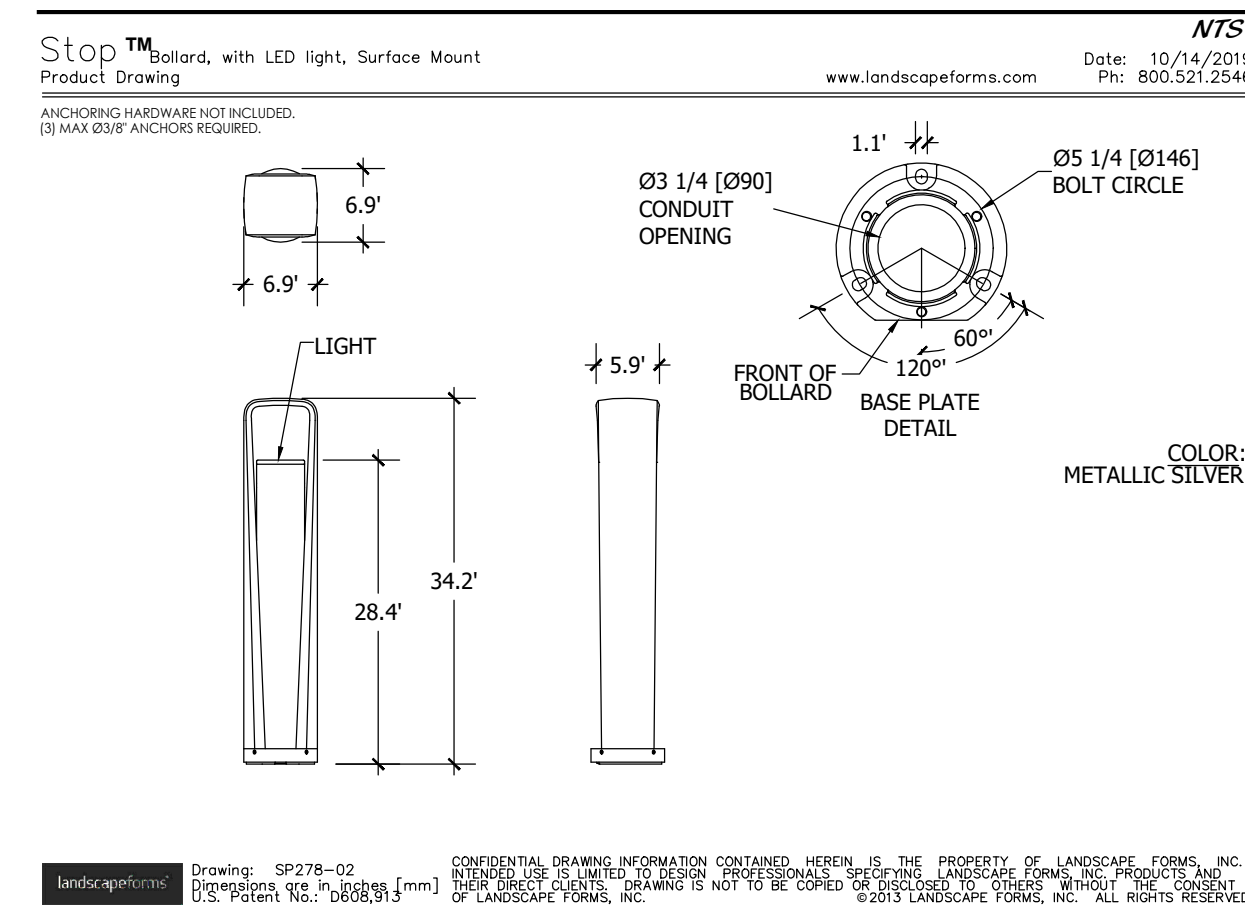
ADA PARKING SPACE & RAMP DETAIL



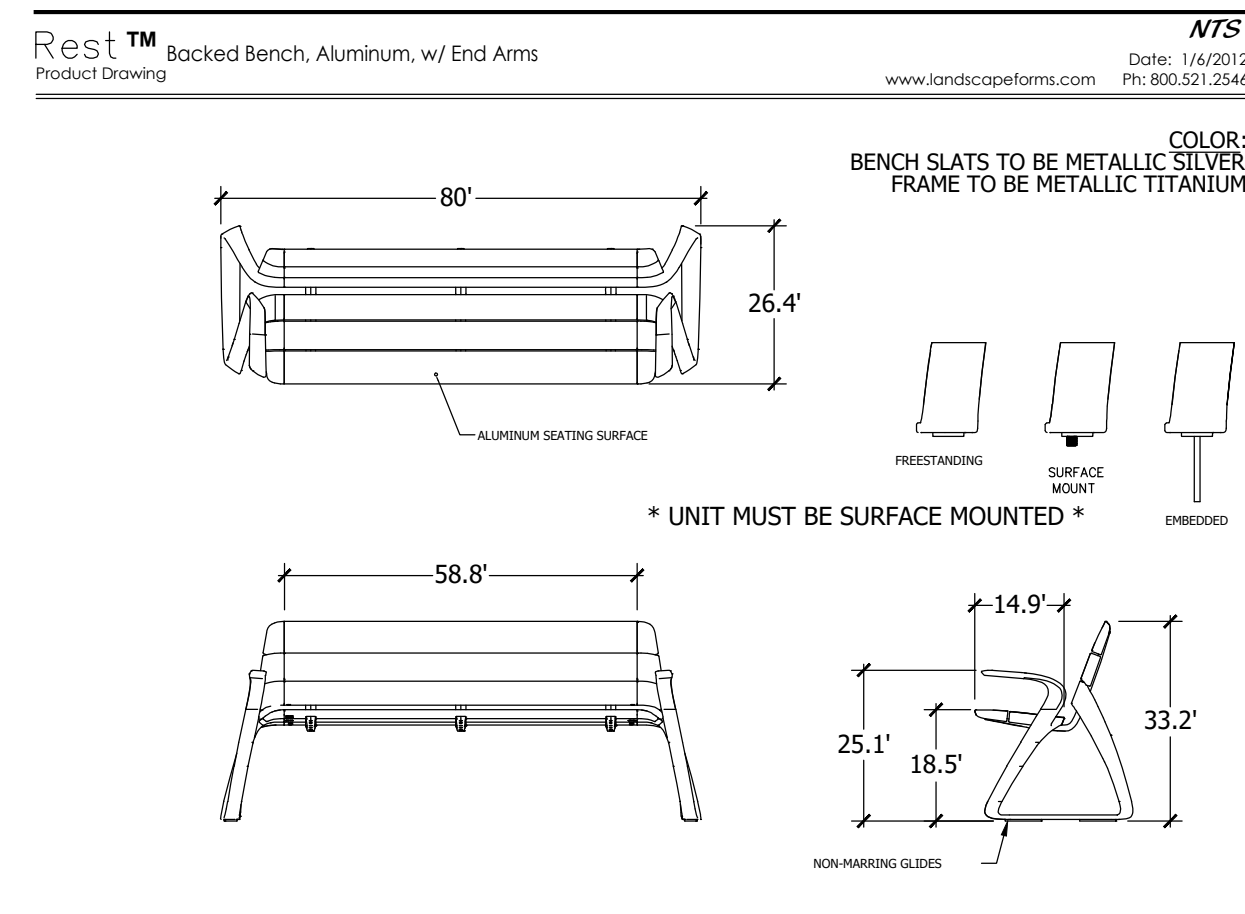
DUMPSTER DETAIL



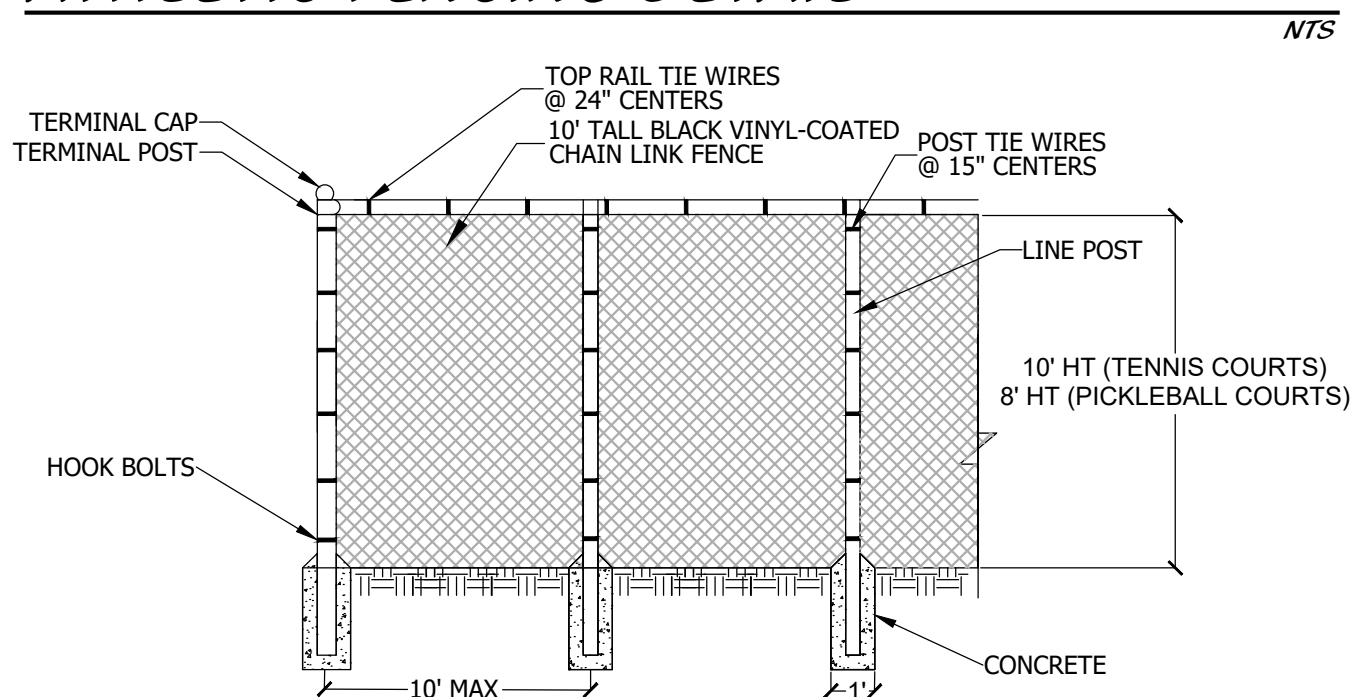
BOLLARD DETAIL



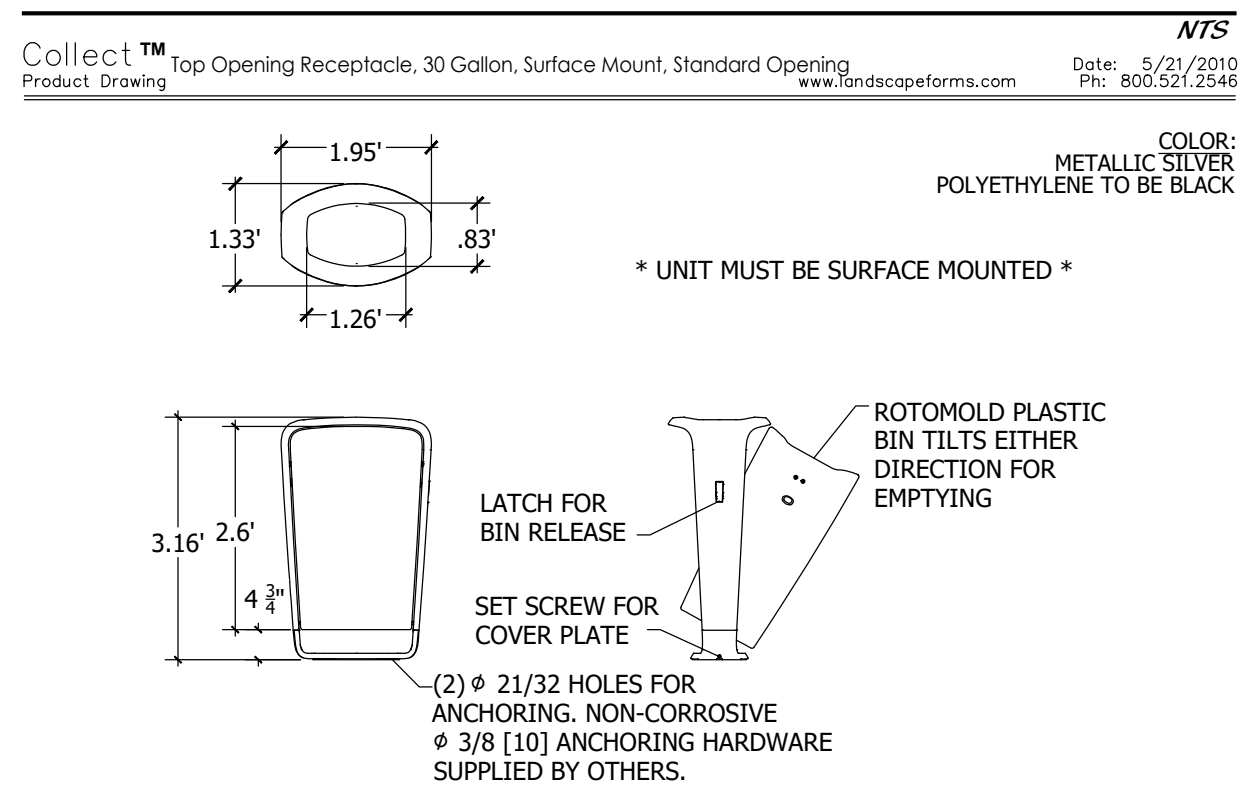
BENCH DETAIL



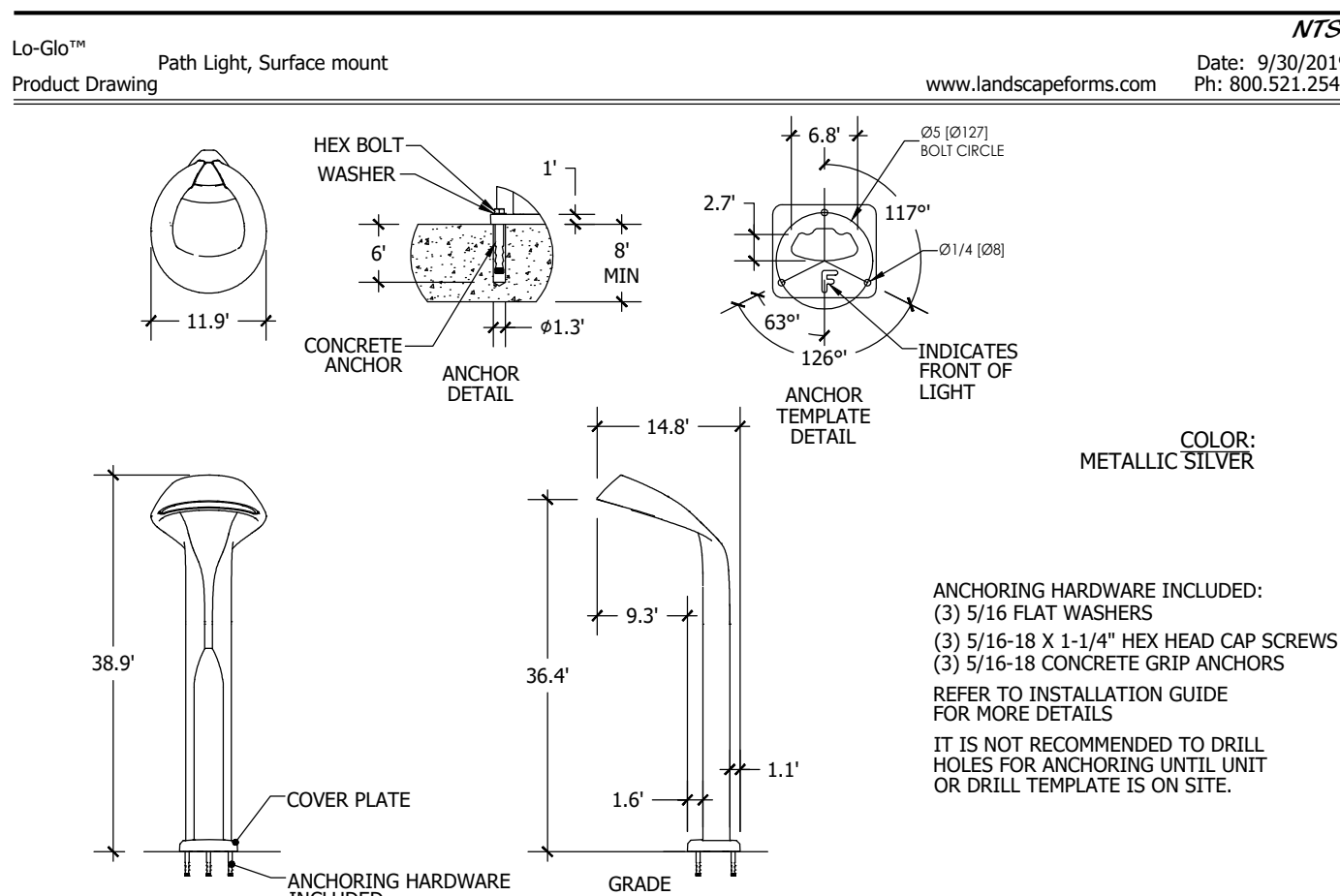
ATHLETIC FENCING DETAIL



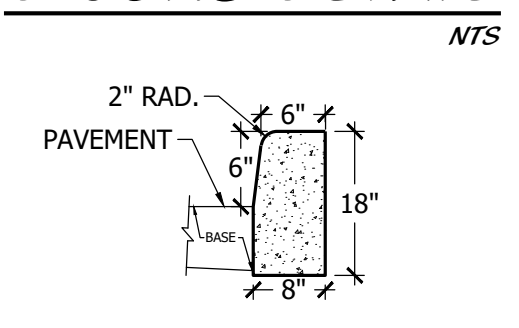
TRASH CAN DETAIL



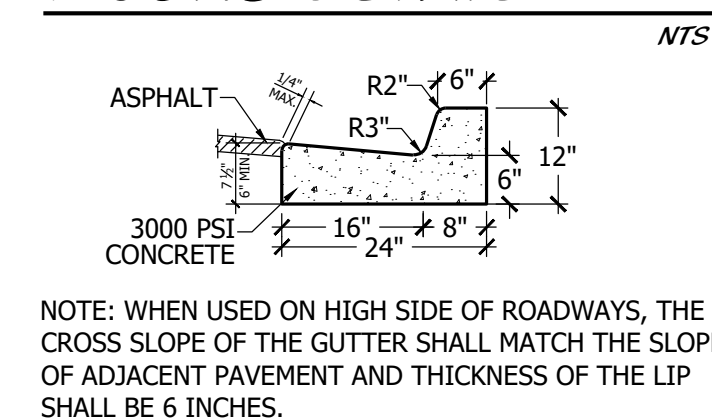
PATH LIGHT DETAIL



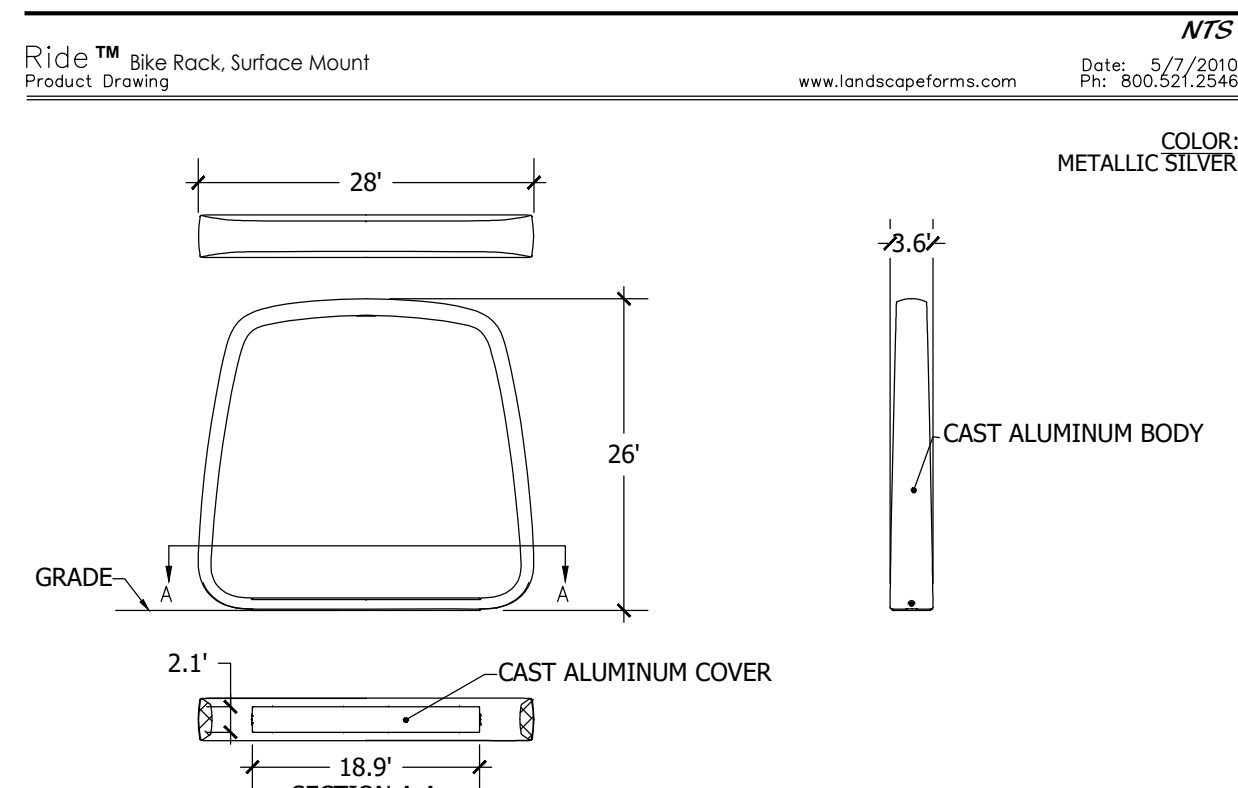
D CURB DETAIL



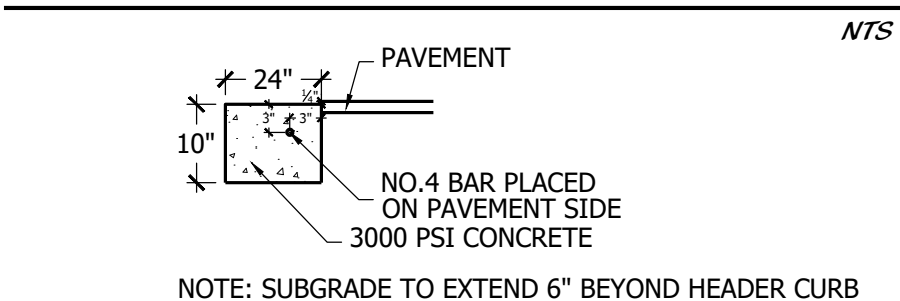
F CURB DETAIL



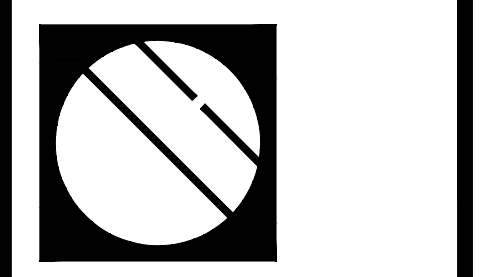
BIKE RACK DETAIL



HEADER CURB DETAIL



SITE DETAILS



Cotleur & Hearing

Landscape Architects
Land Planners
Environmental Consultants
1934 Commerce Lane
Suite 1
Jupiter, Florida 33458
561.747.6336 · Fax 747.1377
www.cotleurhearing.com
Lic# LC-C000239

WESTLAKE - POD P AMENITY CENTER PALM BEACH COUNTY, FL

DESIGNED	LAH
DRAWN	JAE
APPROVED	DEH
JOB NUMBER	18-1002
DATE	04-13-20
REVISIONS	05-11-20
	06-01-20
	06-15-20

June 15, 2020 4:11:48 p.m.
Drawing: 181002 CLUBHOUSE SD.DWG