

**NOTES:**

- 1) Irrigation system to be a permanent system.
- 2) The irrigation plan shall be designed and installed to conform to this Code.
- 3) All plant material shall be FL. Grade #1 and "Florida Friendly".

**dynamics**  
LANDSCAPE ARCHITECTS AND PLANNERS, LLC

**LANDSCAPE ARCHITECT:**  
**Robert R. Buchanan** LA00009333

Landscape Dynamics Construction Co. INC. hereby reserves its copyright in all designs, drawings, and reports rights in these plans, ideas, and designs. These ideas, designs, or plans are not to be reproduced, changed, or copied in any form or manner whatsoever, nor are they to be assigned to any third party without the express written permission from Landscape Dynamics Construction Co. INC.

**48 HOURS BEFORE YOU DIG**  
**CALL SUNSHINE**  
**1-800-432-4770 or 811**  
**IT'S THE LAW IN FLORIDA**

FLORIDA LAW REQUIRES ANYONE TO NOTIFY OWNERS OF UNDERGROUND UTILITIES NO LESS THAN TWO (2) DAYS PRIOR TO EXCAVATION

**811**

Digitally signed by  
Robert R Buchanan  
Date: 2025.07.28  
11:14:47 -04'00'

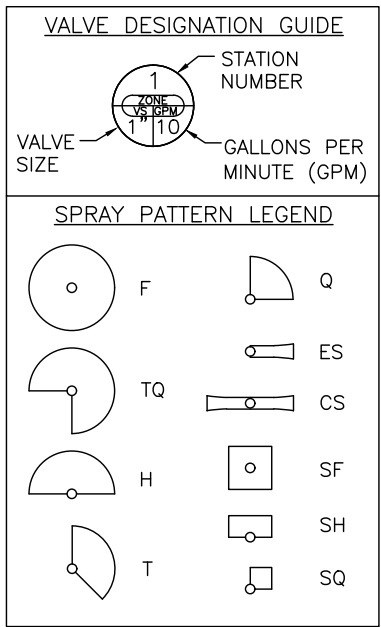






This site plan illustrates a proposed development within a larger context. The central feature is a large, rectangular building with a dark grey roof. To its north and east are parking areas with individual parking spaces marked. A dashed line delineates the project boundary. Key features include:

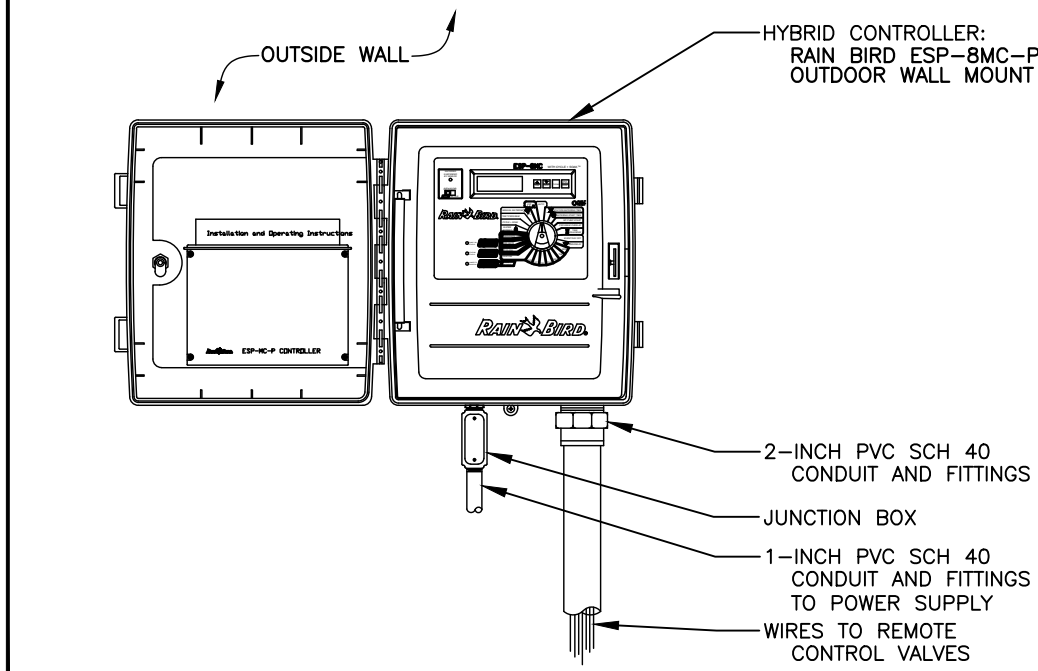
- Zone 1:** Located in the upper left, containing a building and parking area.
- Zone 2:** Located in the lower left, containing a building and parking area.
- Zone 3:** Located in the lower right, containing a building and parking area.
- Infrastructure:** A road runs along the top and right sides. A bridge or crossing is shown on the right. A 'STOP' sign is indicated near the bottom left.
- Landscaping:** Various trees and shrubs are shown throughout the site, particularly along the roads and in the central area.
- Orientation:** A north arrow is located in the upper right quadrant.
- Other Details:** A 'C' symbol is visible near the bottom left, and an 'M' symbol is near the bottom right. A 'STOP' sign is also indicated near the bottom left.



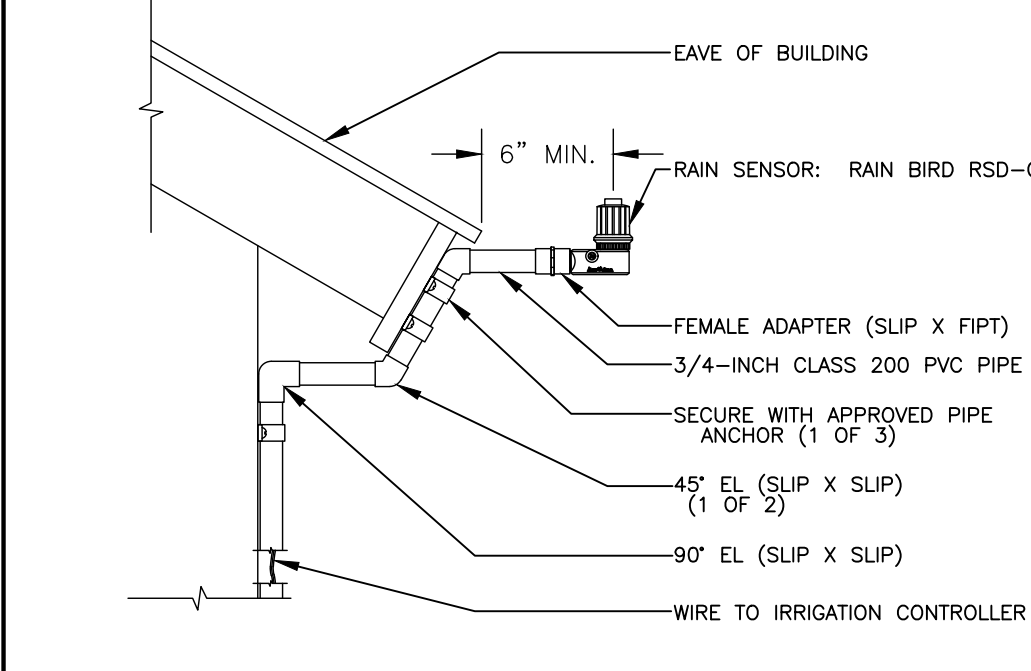
**SCALE: 1 : 20**

# IR100

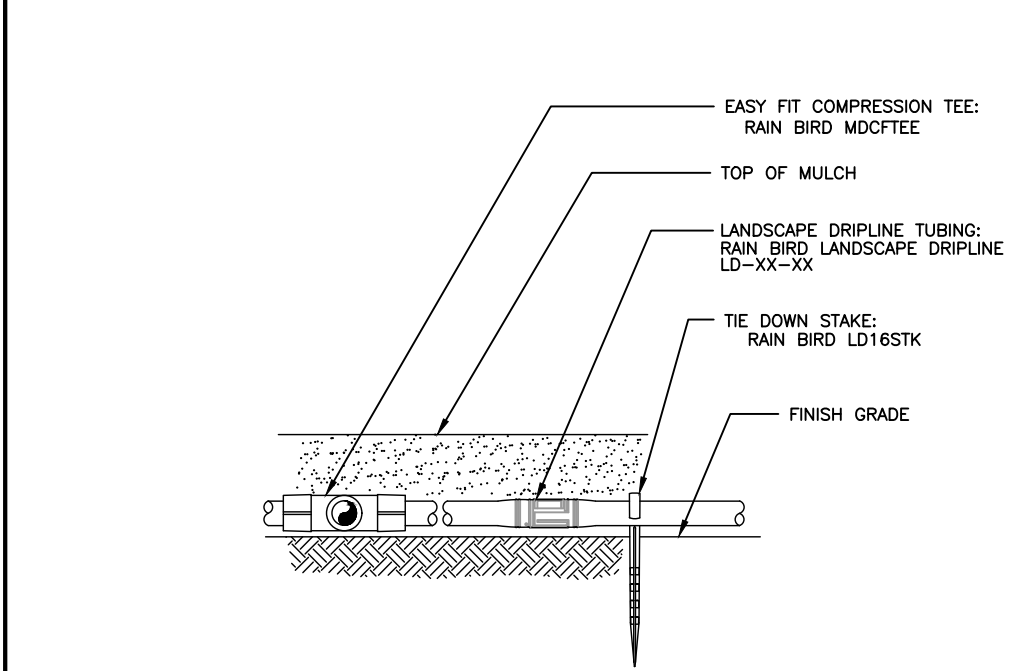
IF LESS THAN 24"x36" SHEET HAS BEEN REDUCED, ADJUST THE SCALE TO THE DRAWING ACCORDINGLY.



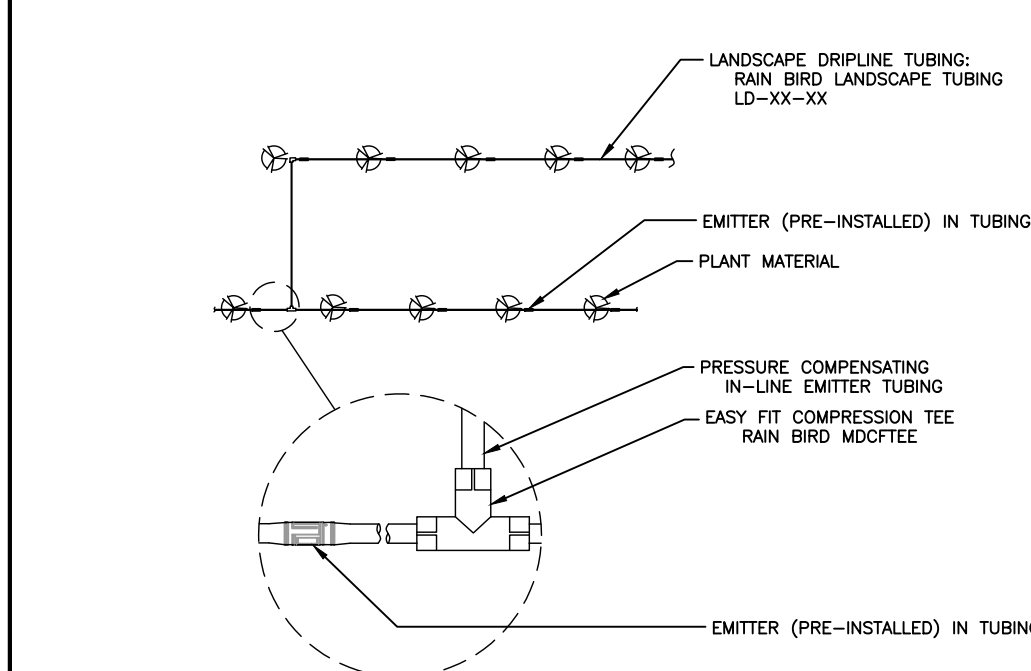
1 FOUR PROGRAM HYBRID CONTROLLER  
ESP-MC PLASTIC WALL-MOUNT N.T.S.



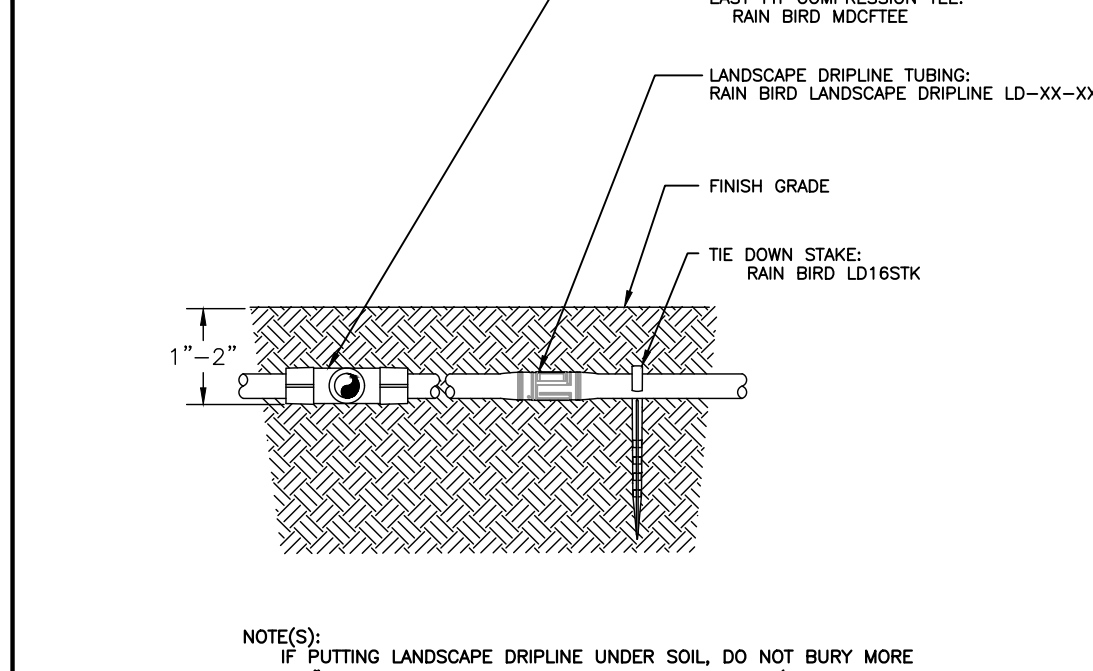
2 RAIN SENSOR  
RSD-CEx ROOF CONDUIT N.T.S.



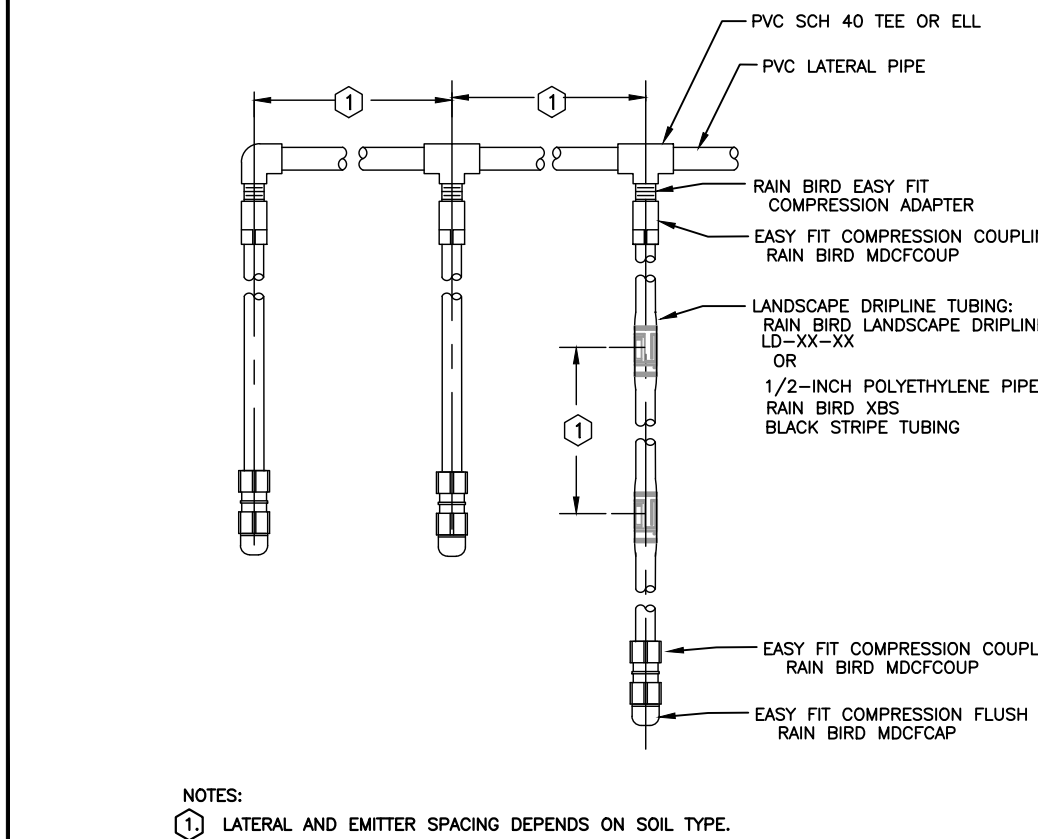
3 LANDSCAPE DRIPLINE ON GRADE  
NON-POTABLE SYSTEM N.T.S.



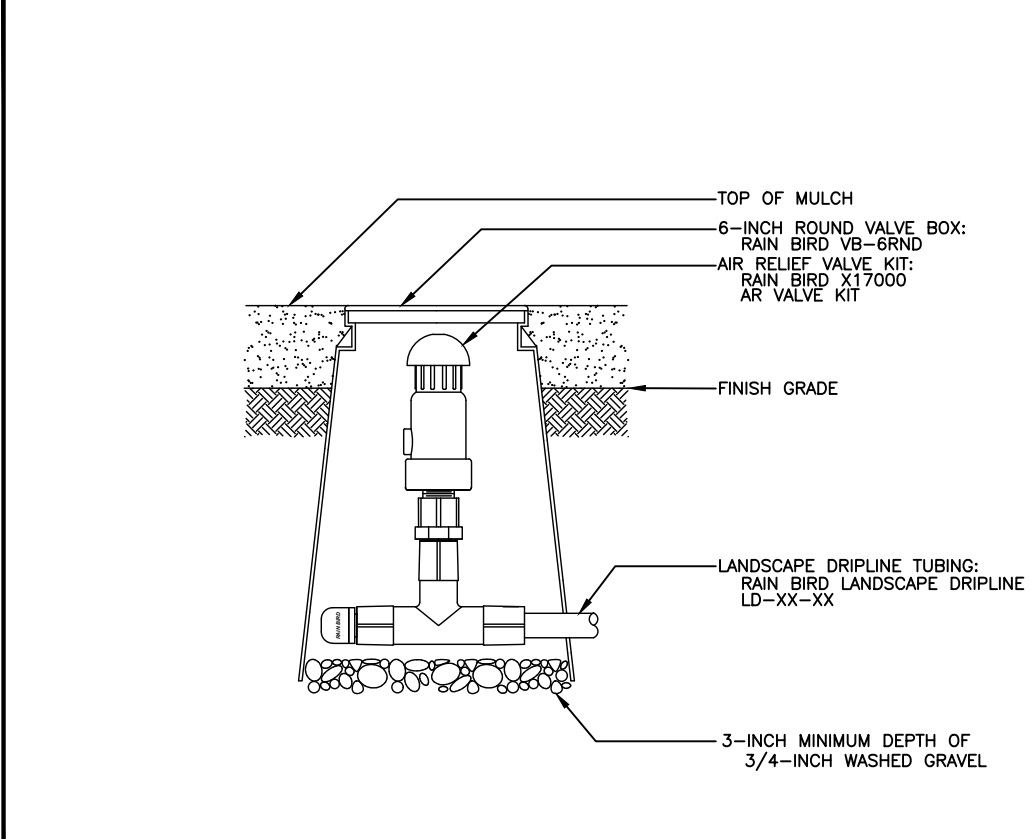
4 LANDSCAPE DRIPLINE CONNECTIONS  
NON-POTABLE SYSTEM N.T.S.



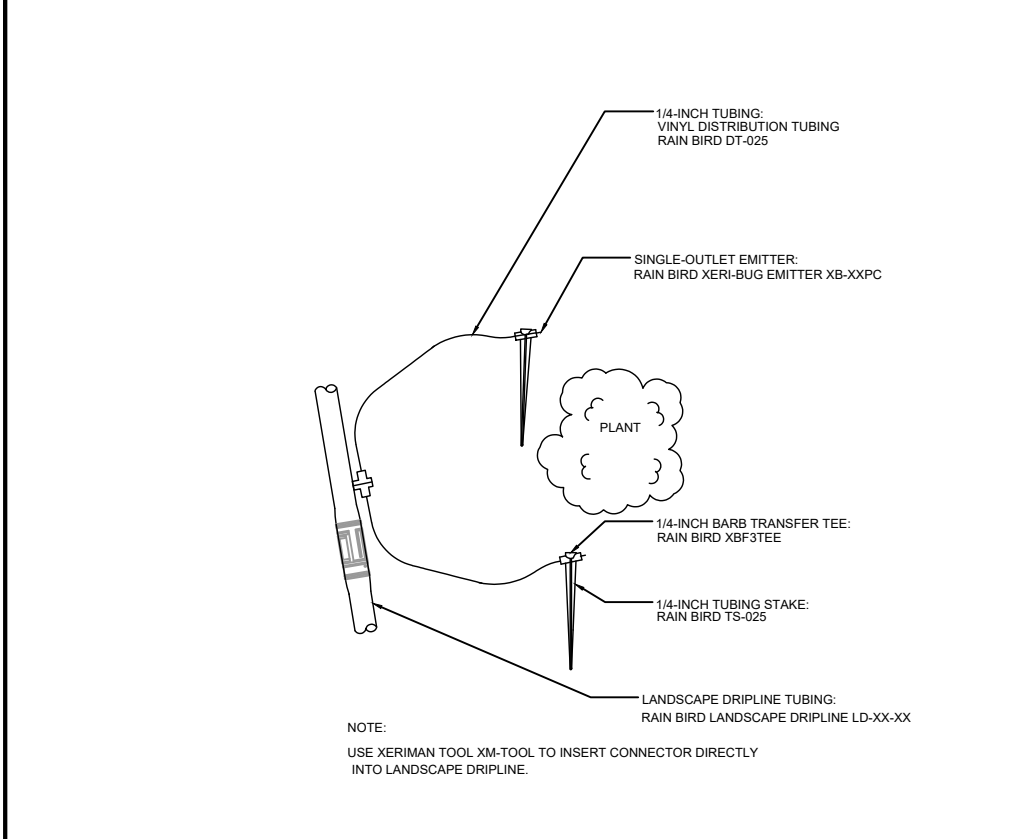
5 LANDSCAPE DRIPLINE 2" BELOW GRADE  
WITH EASY FIT TEE - POTABLE SYSTEM N.T.S.



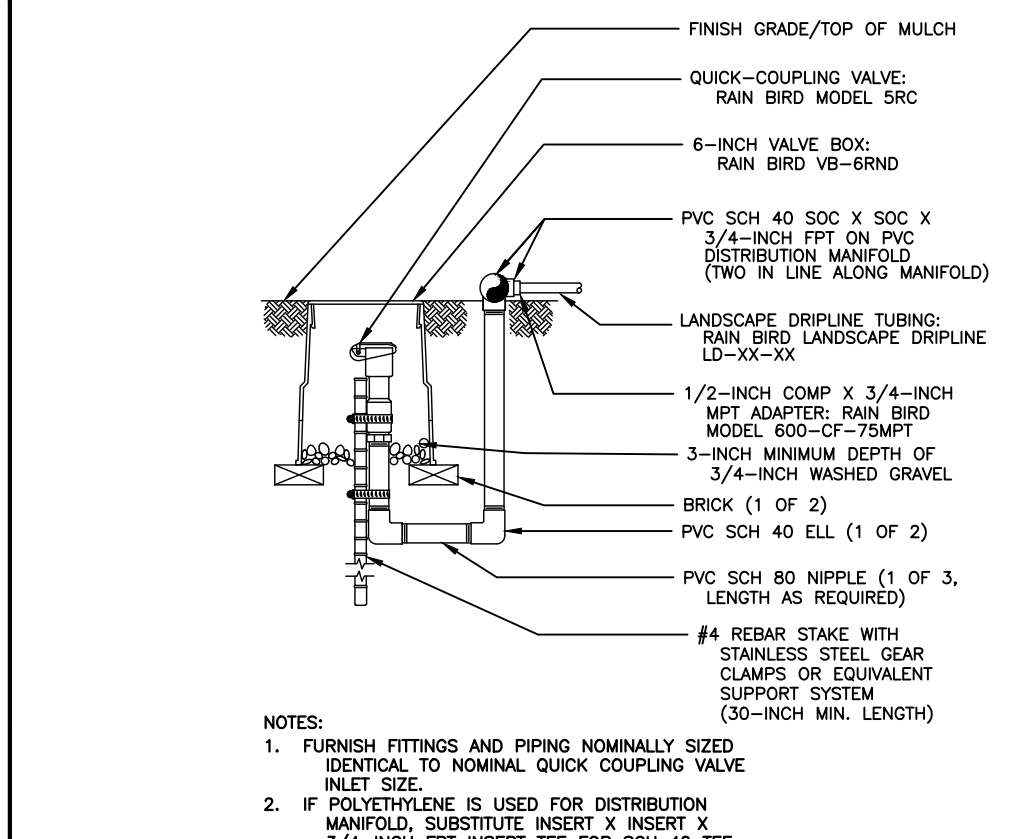
6 LANDSCAPE DRIPLINE LATERALS  
NON-POTABLE SYSTEM N.T.S.



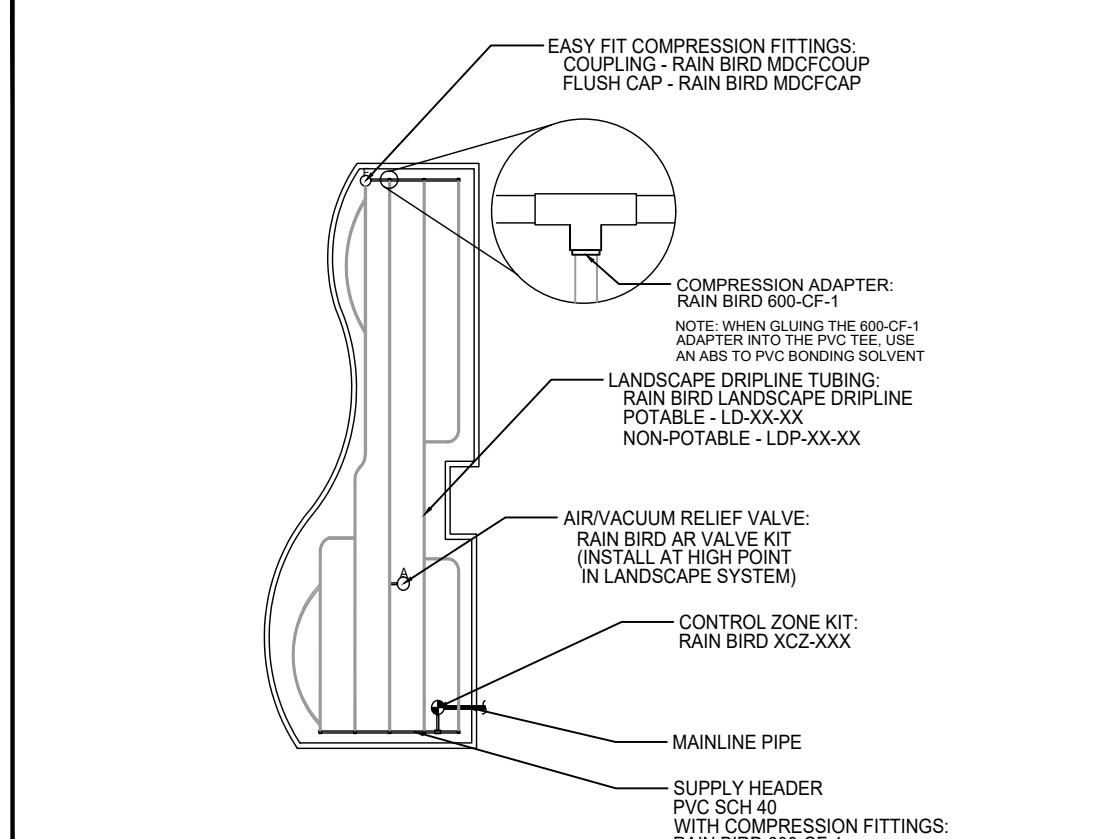
7 AIR RELIEF VALVE IN KIT  
N.T.S.



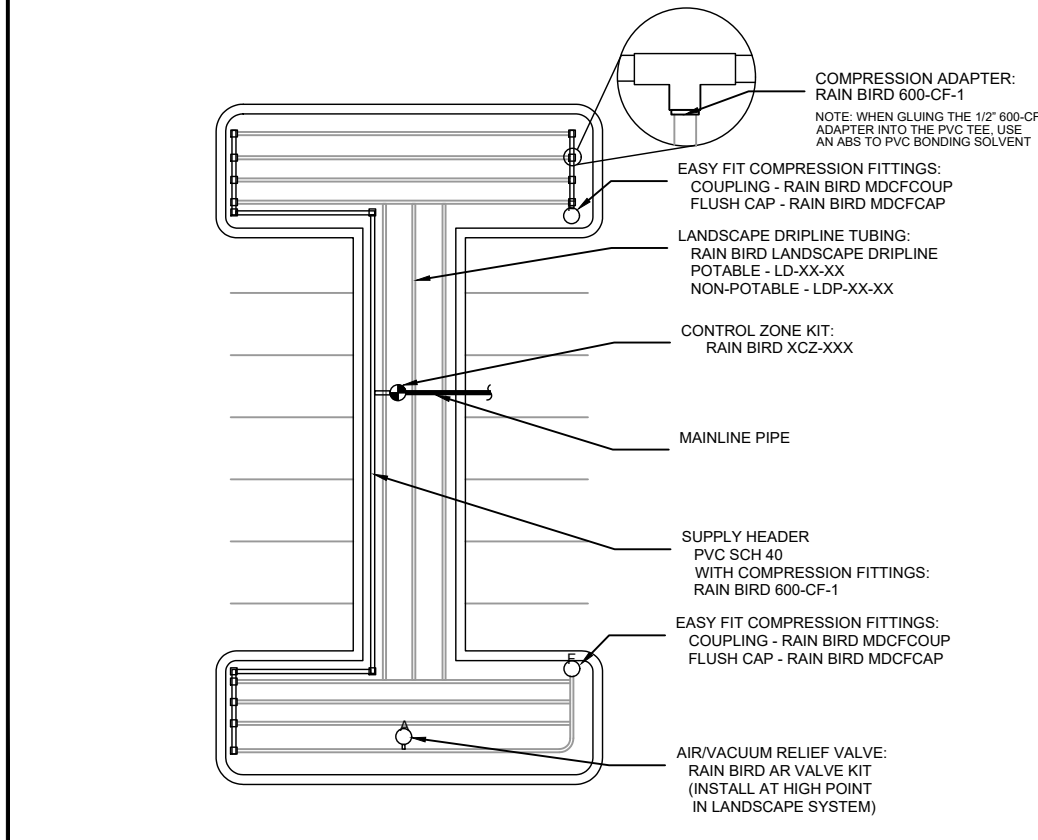
8 LANDSCAPE DRIPLINE  
WITH SUPPLEMENTAL EMITTERS N.T.S.



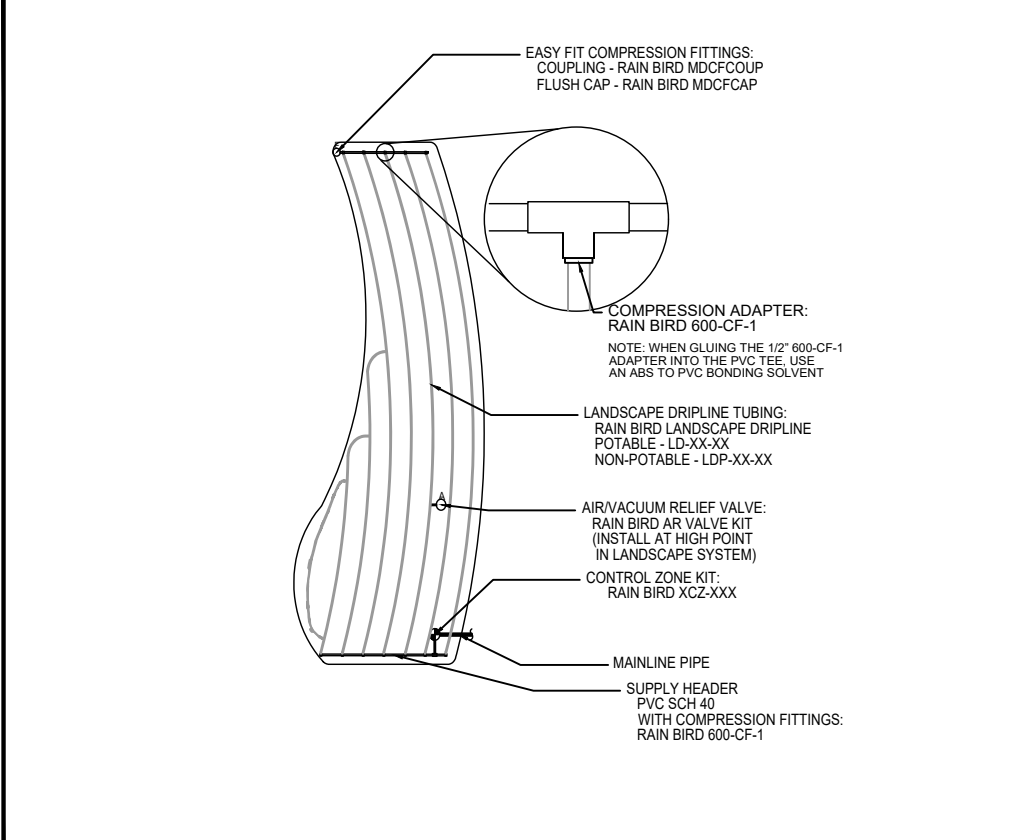
9 LANDSCAPE DRIPLINE FLUSH POINT  
NON-POTABLE SYSTEM N.T.S.



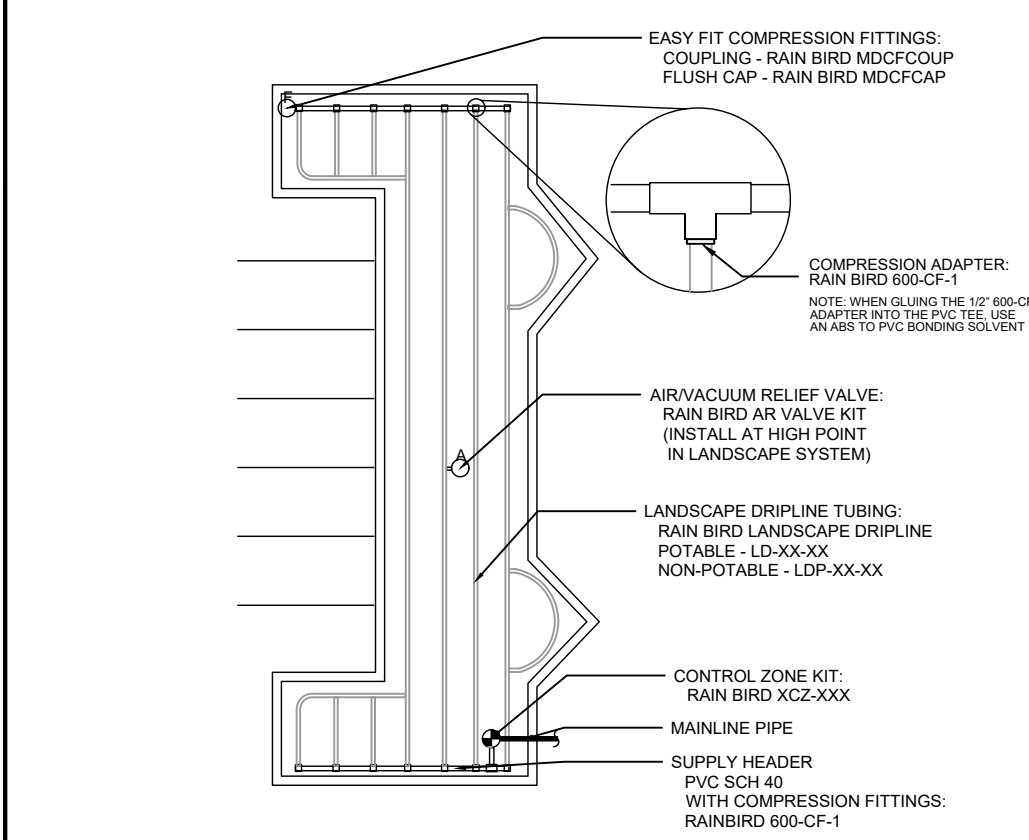
10 LANDSCAPE PLANTER - ODD SHAPED  
N.T.S.



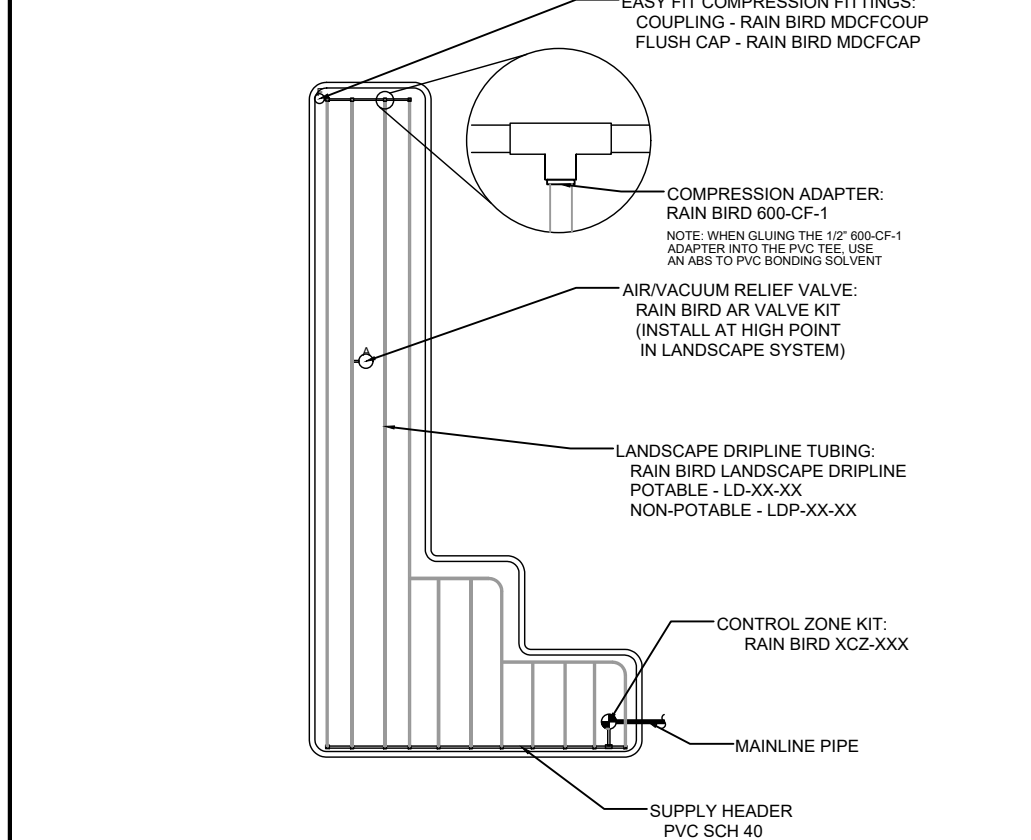
11 PARKING LOT - DOGBONE SHAPED  
N.T.S.



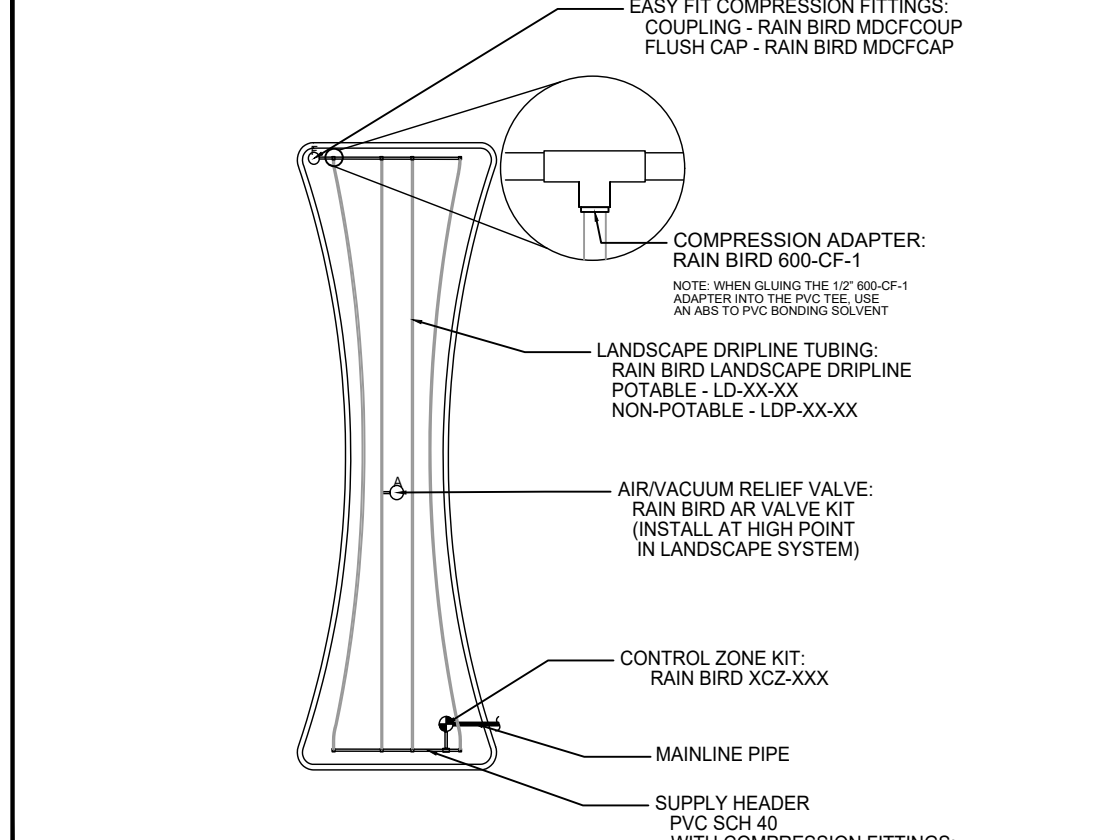
12 LANDSCAPE PLANTER - CURVED POLYGON SHAPED  
N.T.S.



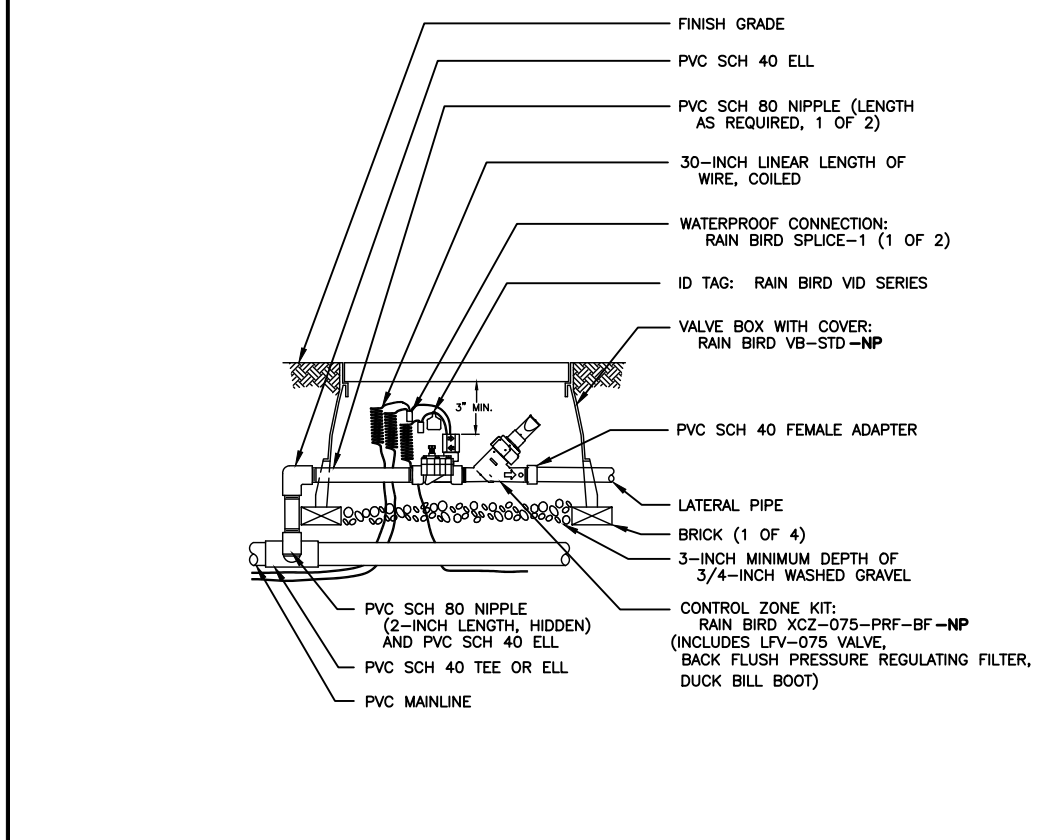
13 PARKING LOT - C SHAPED  
N.T.S.



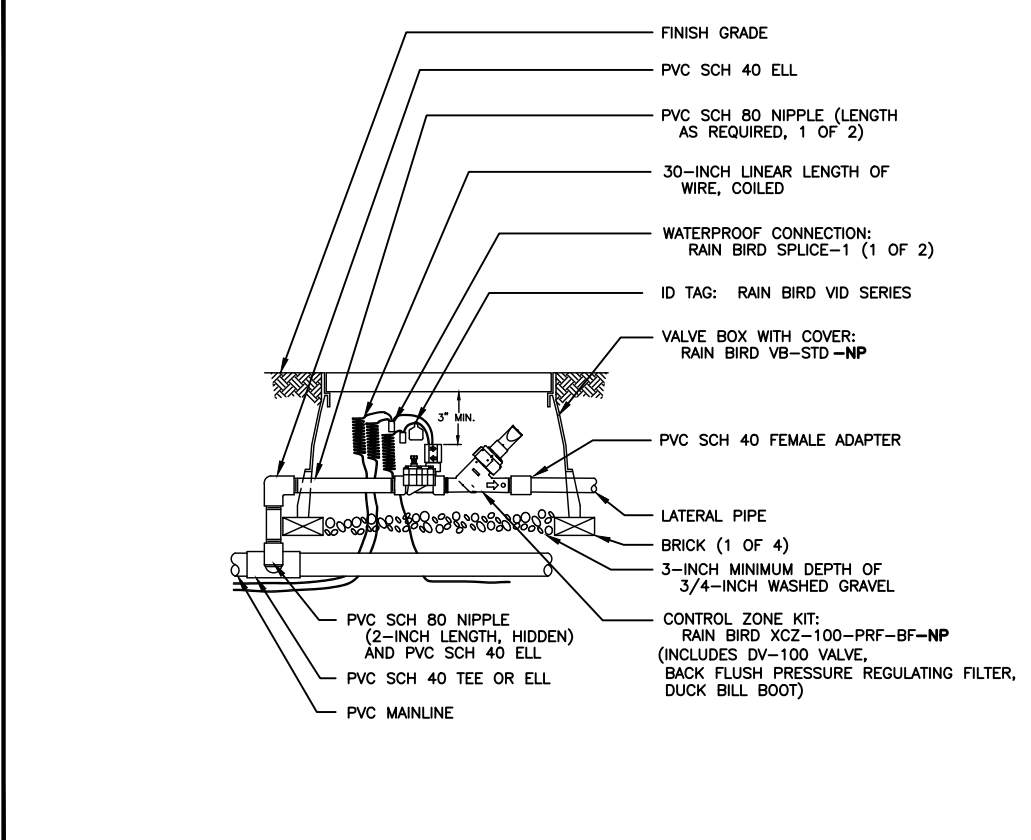
14 LANDSCAPE PLANTER - CORNER SHAPED  
N.T.S.



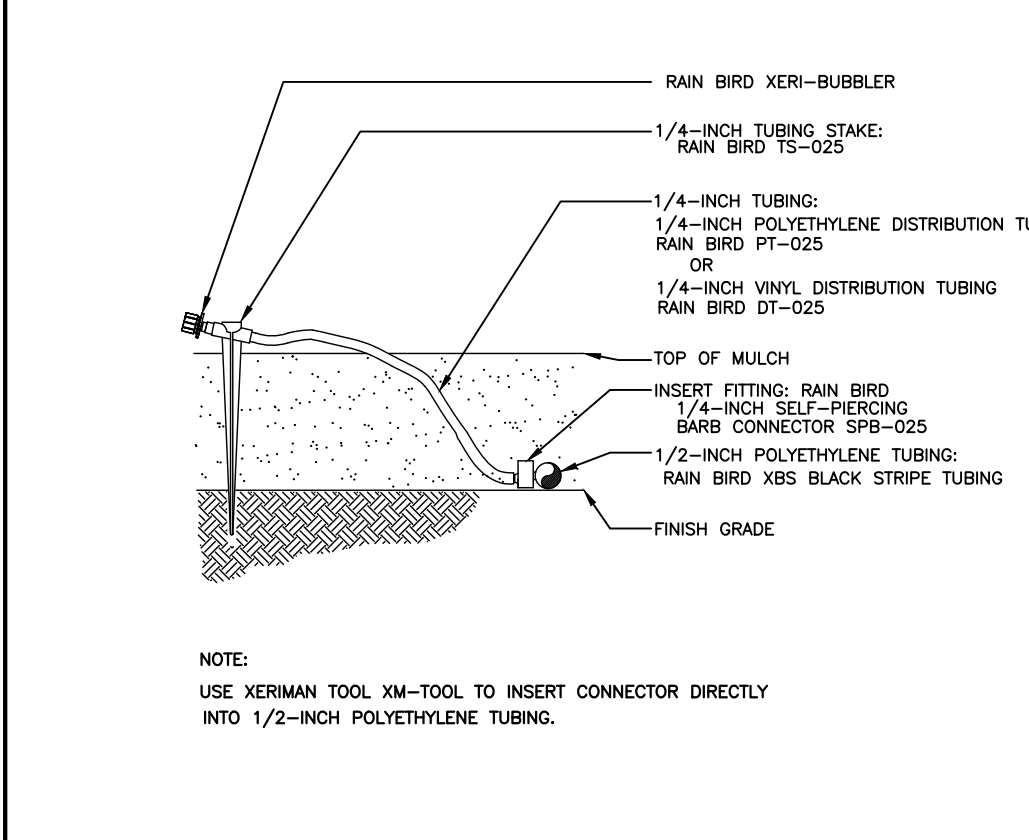
15 LANDSCAPE PLANTER - HOURGLASS SHAPED  
N.T.S.



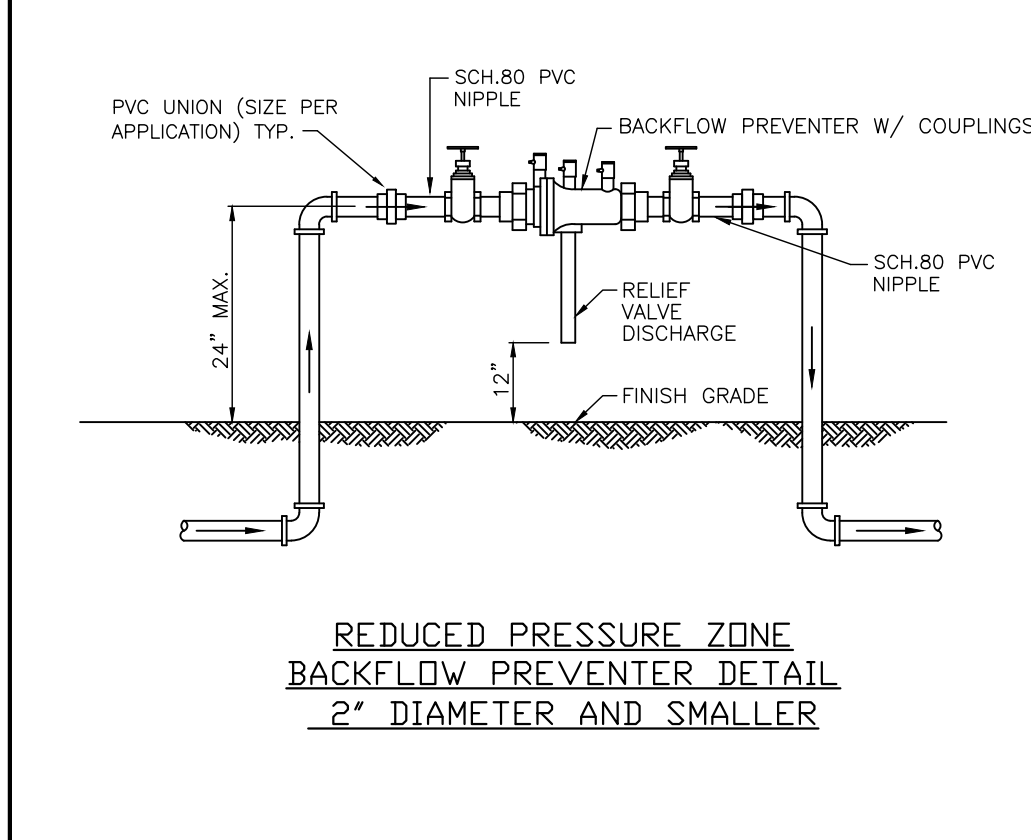
16 3/4" CONTROL ZONE KIT WITH PRESSURE REGULATING BACKFLUSH FILTER  
XCZ-075-PRF-BF N.T.S.



17 1" CONTROL ZONE KIT WITH PRESSURE REGULATING BACKFLUSH FILTER  
XCZ-100-PRF-BF N.T.S.



18 XERI-BUBBLER ON 1/4" TUBING  
N.T.S.



19 RPZ BACKFLOW PREVENTER DETAIL  
N.T.S.

Digitally signed by  
Robert R Buchanan  
Date: 2025.07.28  
11:15:55 -04'00'  
LANDSCAPE ARCHITECT  
Robert R. Buchanan LA0000932  
Landscape Dynamics Construction Co. Inc. hereby reserves  
the right to amend, modify, alter, or change any part of  
these plans, specifications, and designs. These plans, specifications, and designs are not to be reproduced, copied, or used in any  
form or manner whatsoever, nor are they to be assigned  
to any third party without first obtaining the express  
written permission from Landscape Dynamics Construction  
Co. Inc.  
48 HOURS BEFORE YOU DIG  
CALL SUNSHINE  
1-800-447-8111  
IT'S THE LAW IN FLORIDA  
FLORIDA LAW REQUIRES  
GEOGRAPHICALLY IDENTIFIED  
LANDSCAPE DYNAMICS CONSTRUCTION  
FACILITIES NOT LESS THAN TWO  
(2) DAYS PRIOR TO DISCUSSION  
CONTRACTOR MUST REVIEW  
ALL GENERAL LANDSCAPE  
NOTES PRIOR TO BIDDING AND  
CONSTRUCTION  
Bohler Engineering FL, LLC  
600 North Westshore Blvd., Suite 950  
Tampa, FL 33609

LANDSCAPE  
**dynamics**  
LANDSCAPE ARCHITECTS AND PLANNERS, LLC

PO BOX 2852 - Winter Park, Florida 32790-2852 - Phone 407-579-8111 - Email randy@landscape-dynamics.com  
Irrigation Details  
Mavis Loxahatchee  
Loxahatchee Groves, Florida

REVISIONS  
1 7/27/25 Comments  
2  
3  
4  
5  
6  
7  
8

DATE: 05-18-25  
JOB #: 2025-016  
PERMIT #  
DRAWN BY: BRB  
FILE NAME: IRRIGATION  
SCALE: N.T.S.  
IR200