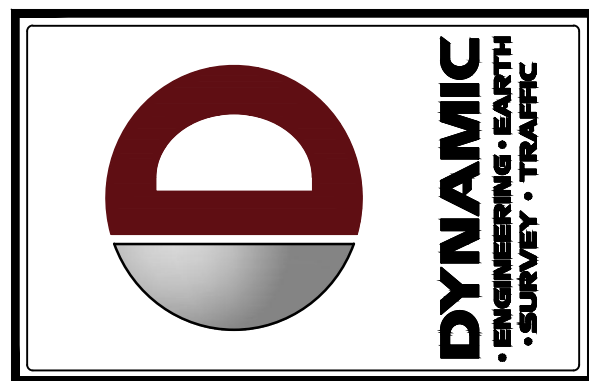
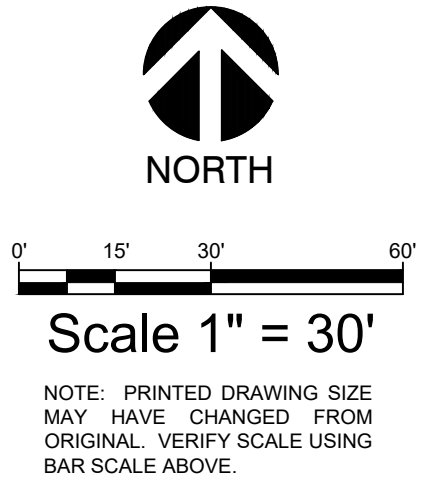


PLANT SCHEDULE

SYMBOL	CODE	QTY	BOTANICAL NAME	COMMON NAME	CONTAINER	CAL/DBH	HEIGHT	SPREAD	NATIVE
CANOPY TREES									
●	BS	24	BURSERIA SIMARUBA	GUMBO LIMBO	CONT.	2" CAL. MIN.	12' MIN.	5' MIN.	YES
○	QV	32	QUERCUS VIRGINIANA	SOUTHERN LIVE OAK	CONT. OR F.G.	2" CAL. MIN.	12' MIN.	5' MIN.	YES
PALM TREES									
✻	RR	19	ROYSTONIA REGIA	ROYAL PALM	F.G.		12' O.A. MIN; 8' CT MIN		YES
✻	SS	38	SABAL PALMETTO	CABBAGE PALMETTO	F.G.		12' O.A. MIN; 8' CT MIN		YES
SMALL TREES									
○	ED	5	ELAEOCARPUS DECIPIENS	JAPANESE BLUEBERRY TREE	CONT.	STD.	5' MIN	3' MIN	
○	JL	8	JATROPHA INTEGERRIMA	SPICY JATROPHA	CONT.		5' MIN	3' MIN	
○	LJ	17	LIGUSTRUM JAPONICUM	JAPANESE PRIVET	CONT. OR F.G.		5' MIN	3' MIN	
ORNAMENTAL PALM TREES									
✻	TM	12	THRINAX MORRISII	KEY THATCH PALM	CONT.		3' O.A. MIN.	3' MIN	YES
SYMBOL CODE QTY BOTANICAL NAME COMMON NAME CONTAINER SPACING HEIGHT SPREAD NATIVE									
HEDGE SHRUBS									
○	CR	98	CHRYSOBALANUS ICACO 'RED TIP'	RED TIP COCO PLUM	CONT	36" OC	18" MIN	18" MIN	YES
○	CN	149	CLUSIA ROSEA 'NANA'	DWARF PITCH APPLE	CONT	36" OC	18" MIN	18" MIN	YES
○	MP	109	MORELLA CERIFERA 'PUMILA'	DWARF WAX MYRTLE	CONT	36" OC	18" MIN	18" MIN	YES
○	MF	56	MYRCIANTHES FRAGRANS	SIMPSON'S STOPPER	CONT	36" OC	18" MIN	18" MIN	YES
SHRUB AREAS									
■	CM	22	CODIAEUM VARIEGATUM 'DREADLOCKS'	DREADLOCKS CROTON	CONT	36" OC	18" MIN	18" MIN	
■	IN	468	ILEX VOMITORIA 'NANA'	DWARF YAUPON HOLLY	CONT	30" OC	18" MIN	18" MIN	YES
■	MC	517	MUHLENBERGIA CAPILLARIS	PINK MUHLY GRASS	CONT	30" OC	18" MIN	18" MIN	YES
■	ST	37	SCHEFFLERA ARBORICOLA 'TRINETTE'	TRINETTE VARIEGATED SCHEFFLERA	CONT	36" OC	18" MIN	18" MIN	
■	ZI	47	ZAMIA INTEGRIFOLIA	COONTIE	CONT	30" OC	12" MIN	18" MIN	YES
SYMBOL CODE QTY BOTANICAL NAME COMMON NAME SIZE SPACING HEIGHT SPREAD NATIVE									
GROUND COVERS									
■	GP	193	GAILLARDIA PULCHELLA	ANNUAL GAILLARDIA	CONT	18" OC	FULL	FULL	YES
■	LS	720	LIRIOPE MUSCARI 'SUPER BLUE'	SUPER BLUE LILYTURF	CONT	18" OC	FULL	FULL	
■	AI	394	MORAEA VEGETA	BUTTERFLY LILY	CONT	18" OC	FULL	12"-14"	
■	SJ	209	STACHYTARPHETA JAMAICENSIS	BLUE PORTERWEED	CONT.	24" OC		FULL	YES
AGGREGATE									
■	GRAVEL	190 SF	3/4" LIMEROCK			4" DEPTH			
SOD/SEED									
■	SA	34,098 SF	STENOTAPHRUM SECUNDATUM 'FLORATAM'	FLORATAM ST. AUGUSTINE GRASS	SOLID SOD				

SEE SHEET LP-2 FOR LANDSCAPE CALCULATIONS

NOTE: NO TREES EXIST ON SITE



REV.	DATE	COMMENTS
2	04/12/24	AGENCY COMMENTS
1	03/27/24	AGENCY COMMENTS

THIS PLAN SET IS FOR PERMITTING PURPOSES ONLY AND MAY NOT BE USED FOR CONSTRUCTION

PROJECT: HIX SNEDEKER COMPANIES, LLC
 100 NE 5th Avenue Suite B2
 Delray Beach, FL 33483
 1: 451.921.8570

DYNAMIC ENGINEERING
 LAND DEVELOPMENT CONSULTING • PERMITTING
 GEOTECHNICAL • ENVIRONMENTAL
 TRAFFIC • SURVEY • PLANNING & ZONING

100 NE 5th Avenue Suite B2
 Delray Beach, FL 33483
 1: 451.921.8570

Offices conveniently located at:
 LAKE CHARLES, NEW JERSEY • 1-201-974-0170
 CHESTER, NEW JERSEY • 1-908-874-9229
 MANALAPAN, NEW JERSEY • 1-908-534-2020
 NEWARK, NEW JERSEY • 1-973-252-7200
 TOWNSHIP, NEW JERSEY • 1-973-252-7200
 NEWTON, PENNSYLVANIA • 1-247-653-0275
 PHOENIX, ARIZONA • 1-602-952-0888
 BETHESDA, MARYLAND • 1-301-288-4402
 ALBUQUERQUE, NEW MEXICO • 1-505-262-7200
 ALBUQUERQUE, NEW MEXICO • 1-505-262-7200
 ALBUQUERQUE, NEW MEXICO • 1-505-262-7200
 ALBUQUERQUE, NEW MEXICO • 1-505-262-7200
 ALBUQUERQUE, NEW MEXICO • 1-505-262-7200
 ALBUQUERQUE, NEW MEXICO • 1-505-262-7200

Florida Certificate of Authorization No. 22533
 www.dynamiccec.com

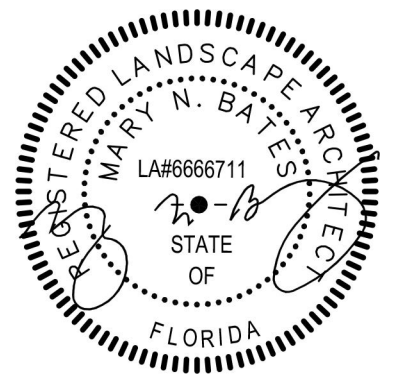
Digitally signed by Mary N Bates
 Reason: LA6666711
 State of Florida
 Date: 2024.04.17
 00:05:24 -06'00'

811 PROTECT YOURSELF
 ALL STATES REQUIRE NOTIFICATION OF
 DIMIANDERS, DESIGNERS, OR ANY PERSON
 PREPARING TO DISTURB THE EARTH'S
 SURFACE ANYWHERE IN ANY STATE
 Know what's below
 Call before you dig
 FOR STATE SPECIFIC DIRECT PHONE NUMBERS VISIT:
 WWW.CALL811.COM

TITLE:
LANDSCAPE PLAN

SCALE: (H) DATE: 02/08/2024
 (V)
 PROJECT No: 2451-23-04281

SHEET No: LP-1 Rev. #:



EVERGREEN DESIGN GROUP
 (800) 680-6630
 2255 Glades Rd, Suite 324A
 Boca Raton, FL 33431
 www.EvergreenDesignGroup.com
 LA #6666710