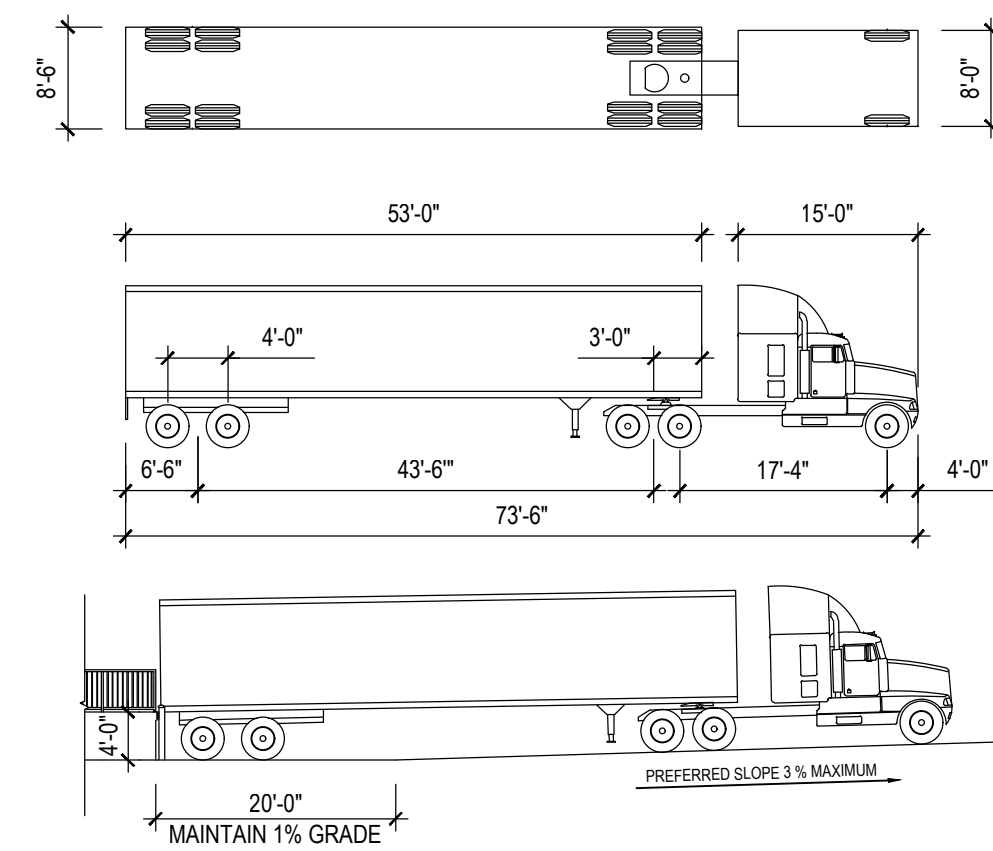
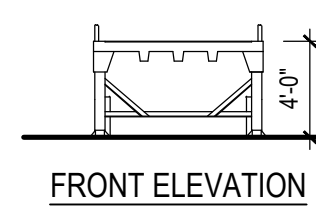


WB-65 SEMI-TRUCK & TRAILER	
TRACTOR WIDTH & TRACK = 8'-0"	STEERING ANGLE = 28.40°
TRAILER WIDTH & TRACK = 8'-6"	ARTICULATING ANGLE = 70.00°

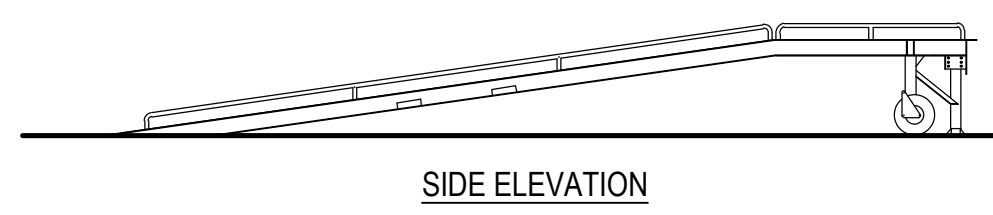


1 SEMI-TRUCK DETAILS

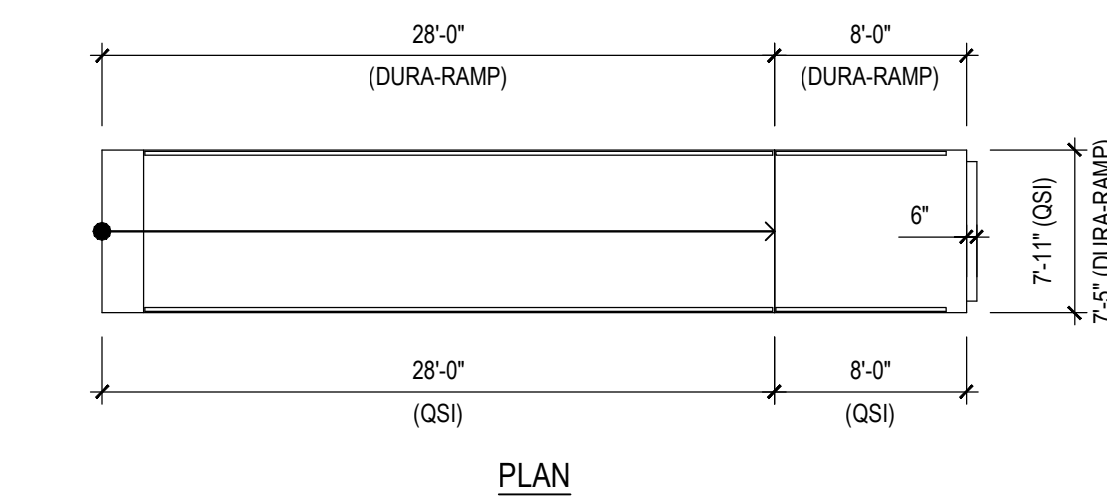
N.T.S.



FRONT ELEVATION



SIDE ELEVATION

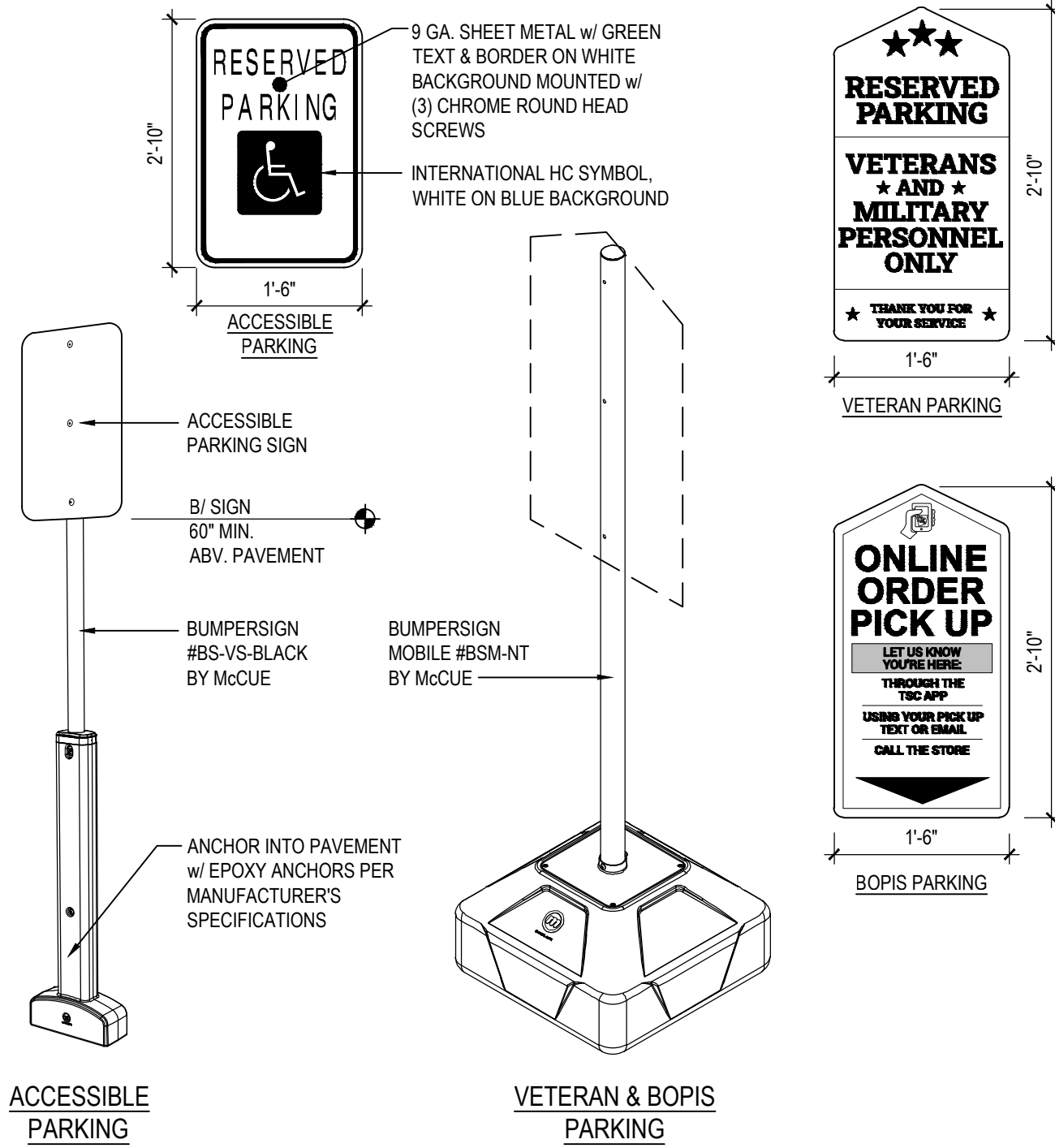


PLAN

2 PRE-FABRICATED STEEL DOCK / RAMP

N.T.S.

FOR REFERENCE ONLY

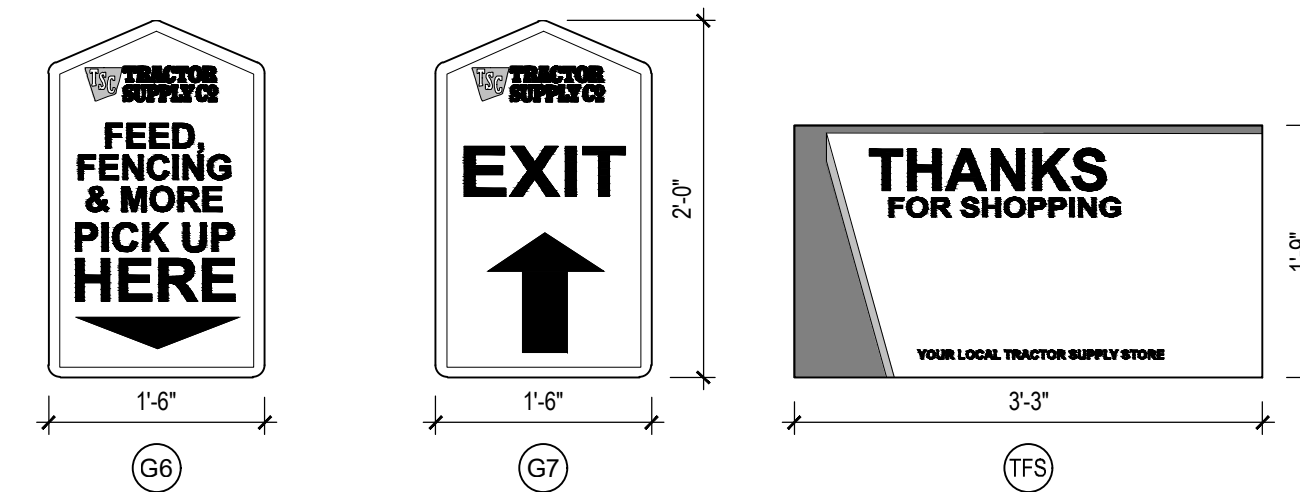


ACCESSIBLE PARKING

VETERAN & BOPIS PARKING

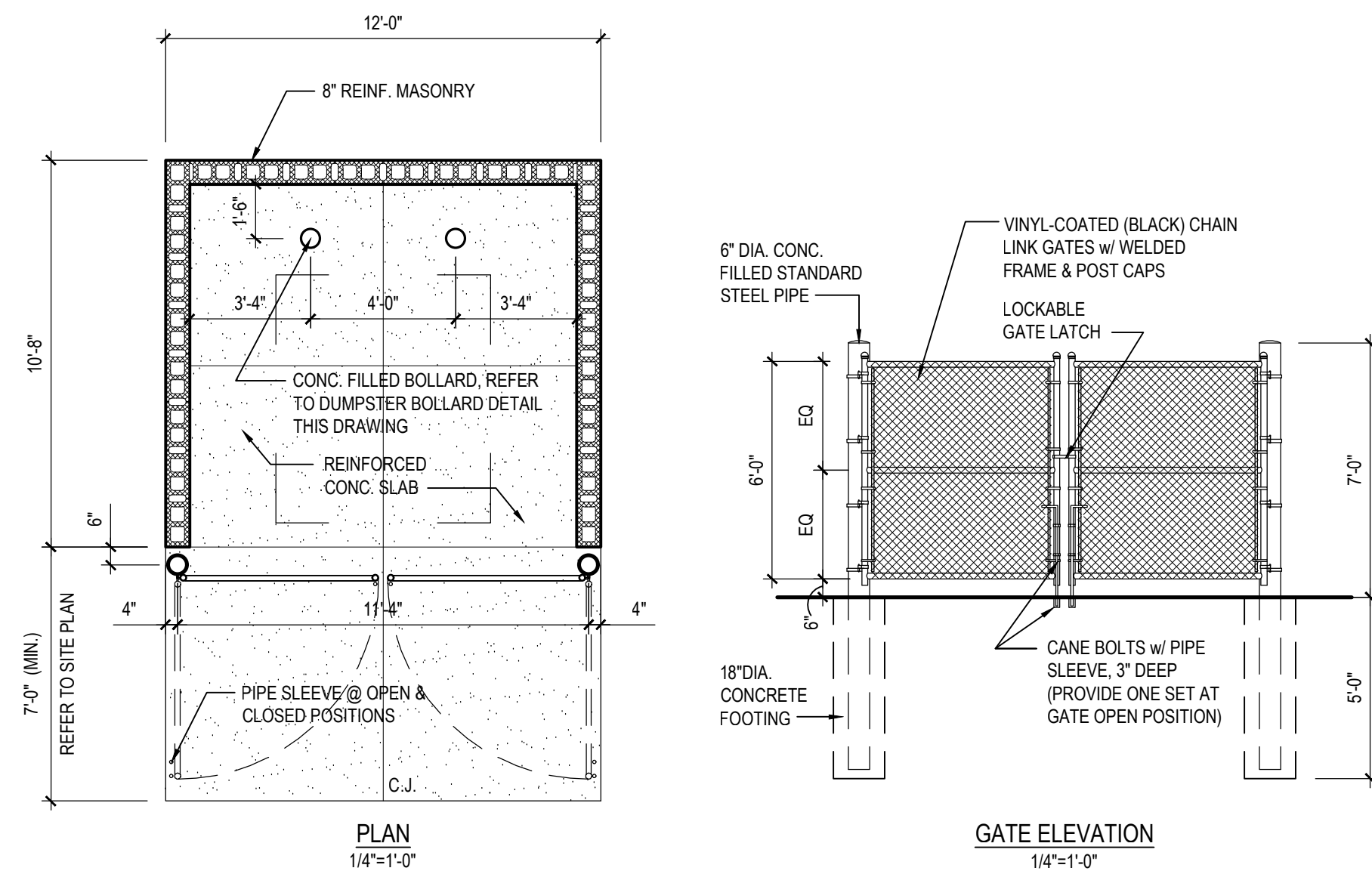
FOD SIGN DESCRIPTION	MOUNTING LOCATION	SUGGESTED MOUNTING
G6 - POLE SIGN: "FEED, FENCING & MORE" (18" X 24")	RIGHT SIDE OF FEED ROOM OVERHEAD DOOR	ON 2.5" DIA. GALVANIZED METAL POLE USING U-BOLTS
G7 - POLE SIGN: "EXIT" (18" X 24")	LEFT SIDE OF REAR DRIVE-THRU GATE	ON 2.5" DIA. GALVANIZED METAL POLE USING U-BOLTS
TFS - GATE SIGN: "THANKS FOR SHOPPING" (39" X 21")	ON FRONT SIDE OF REAR DRIVE-THRU GATE	VENDOR SHALL PROVIDE HOOKUP FOR INSTALLATION

*CONFIRM FINAL LOCATIONS w/ TSC PM



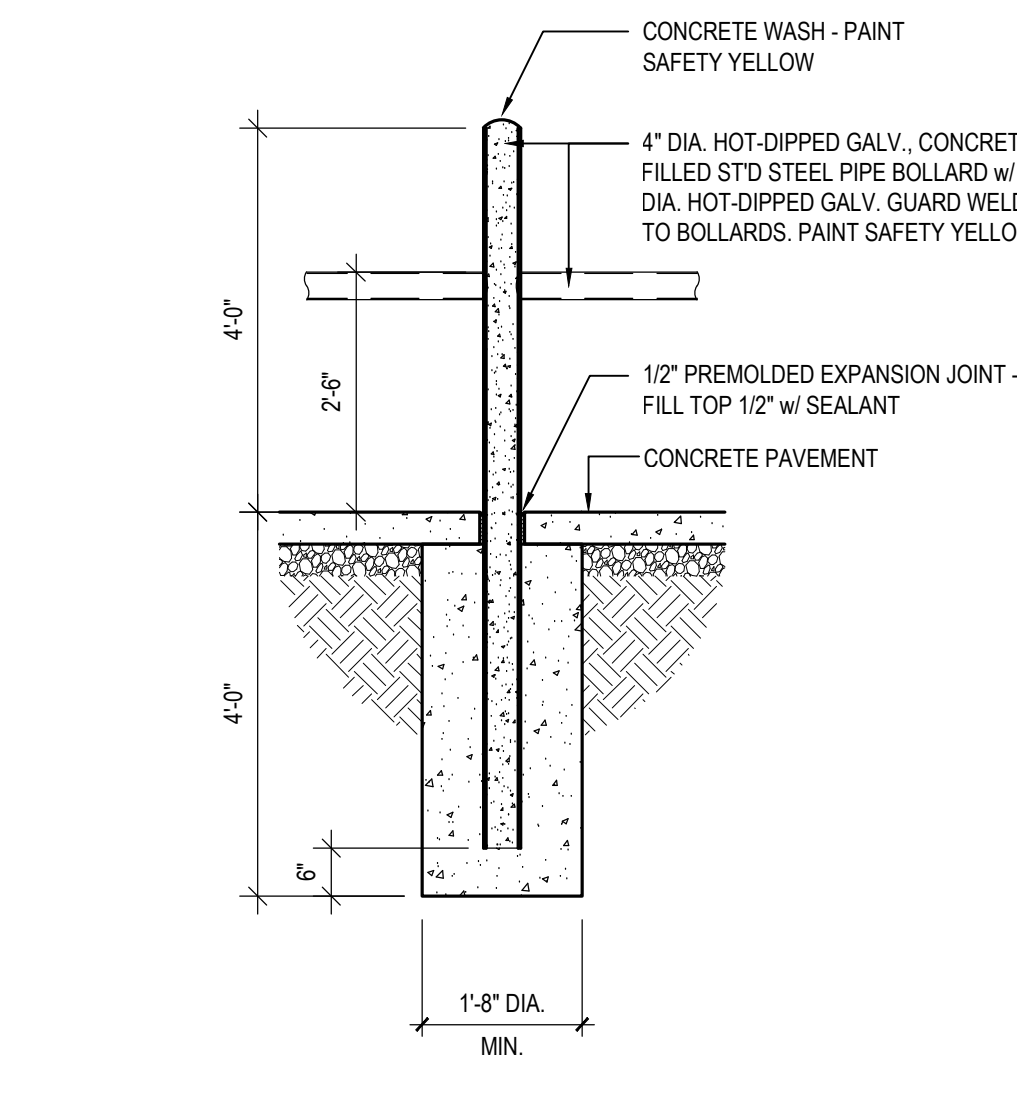
3 VERTICAL SIGNAGE DETAILS

N.T.S.



7 DUMPSTER ENCLOSURE DETAILS

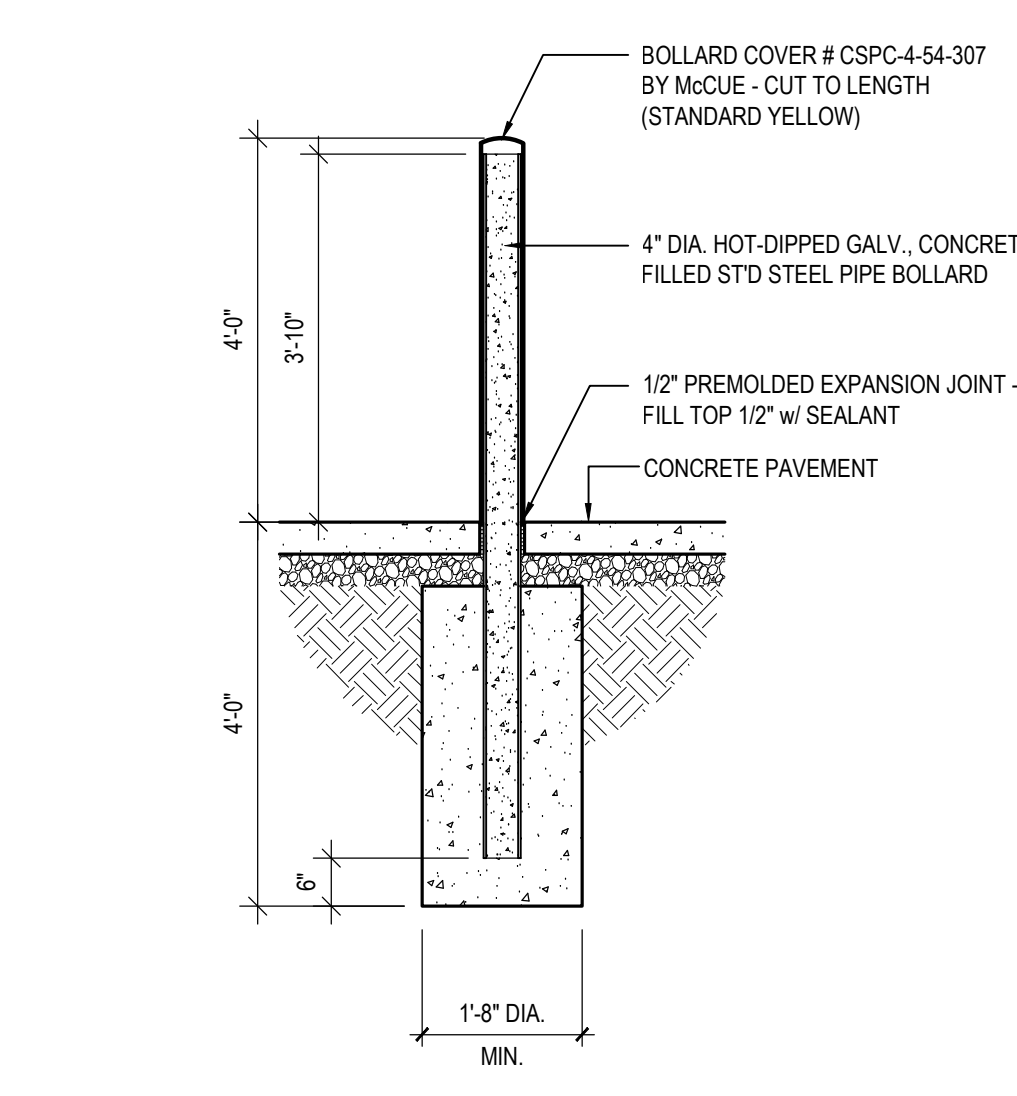
N.T.S.



6 PROPANE TANK BOLLARD DETAIL

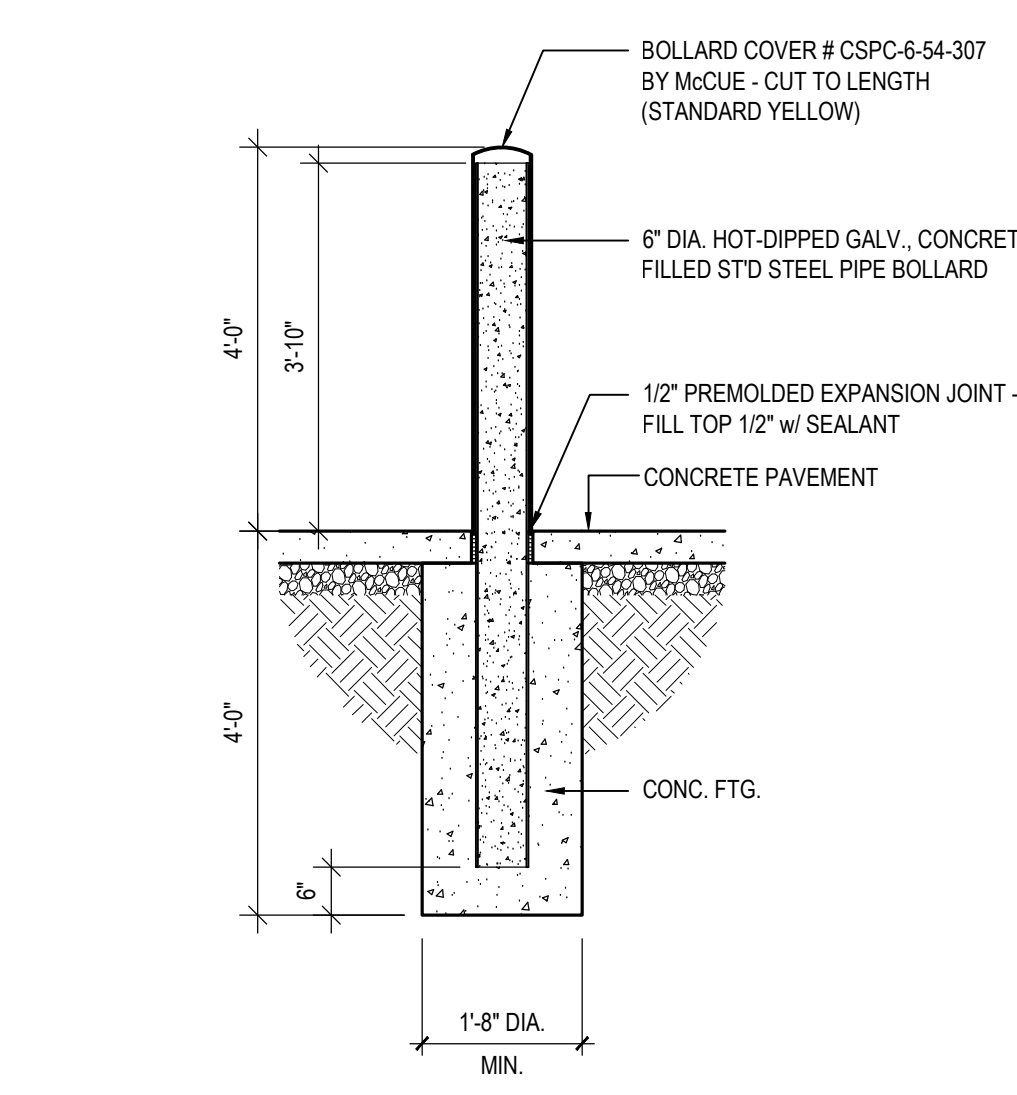
1/2"=1'-0"

TEXAS LOCATIONS



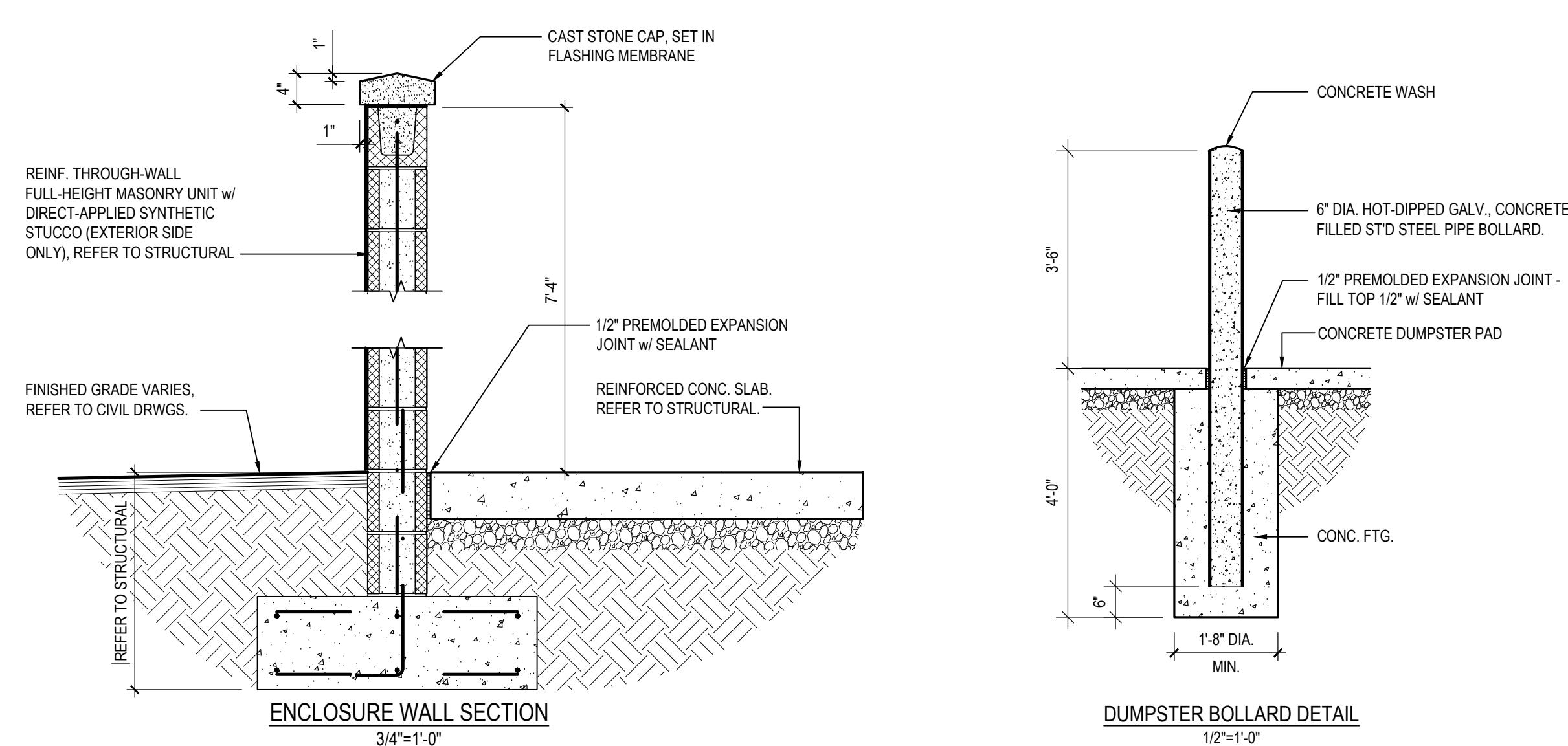
5 PROPANE TANK BOLLARD DETAIL

1/2"=1'-0"



4 BOLLARD DETAIL

1/2"=1'-0"

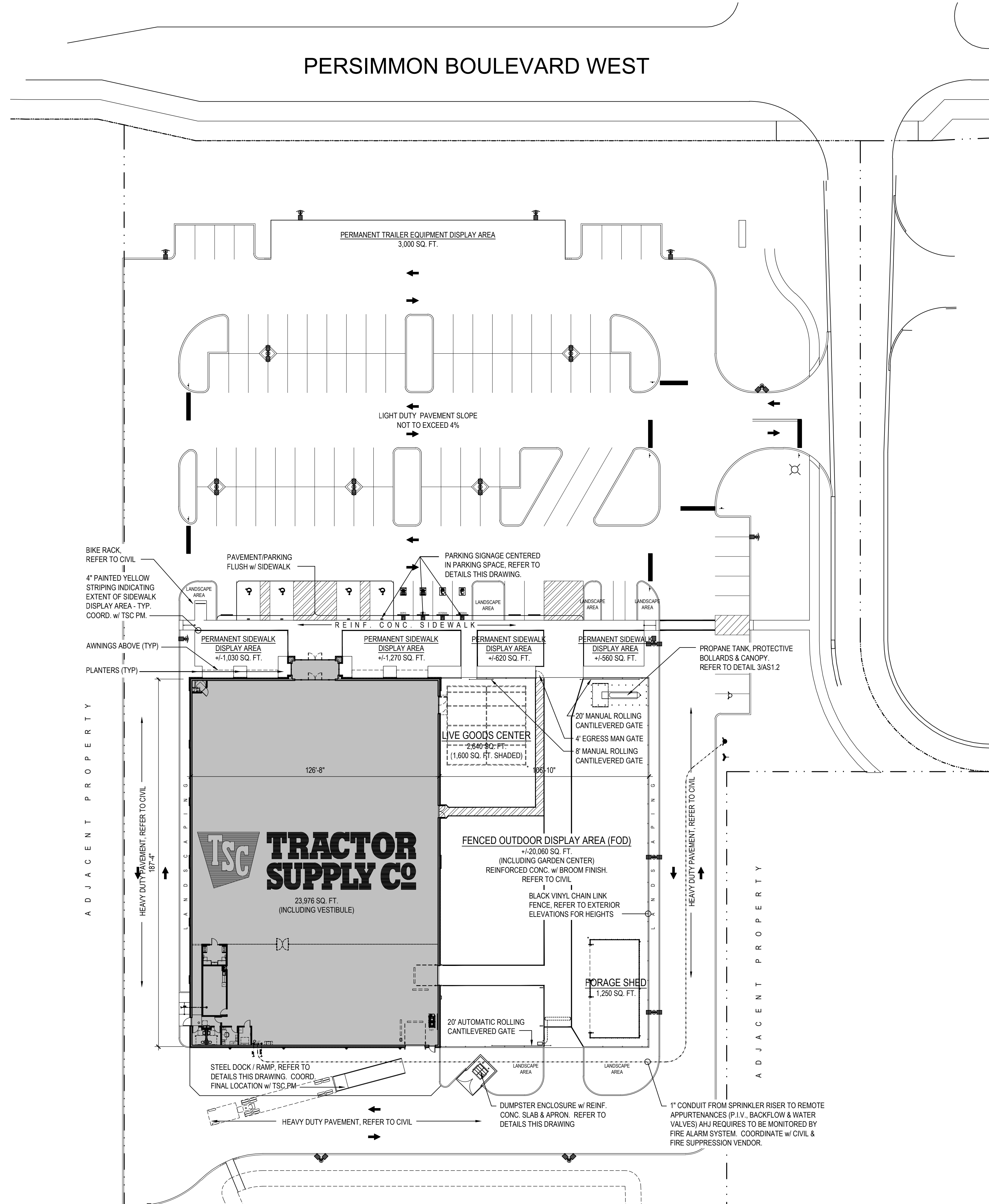


ENCLOSURE WALL SECTION

DUMPSTER BOLLARD DETAIL

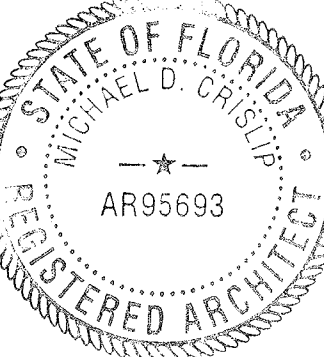
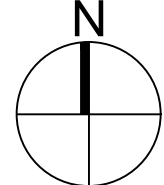
GENERAL NOTES

- REFER TO CIVIL ENGINEERING DRAWINGS (SEPARATE SCOPE) FOR ADDITIONAL INFORMATION, INCLUDING BUT NOT LIMITED TO CONCRETE DESIGN.
- REFER TO VENDOR INFORMATION FOR THE FOLLOWING:
 - TRUCK RAMP / DOCK
 - SIGNAGE
 - BOLLARD COVERS
- REFER TO SHEET AS1.2 FOR CHAIN LINK FENCE SPECIFICATIONS



ARCHITECTURAL SITE PLAN

1"=30'-0"



Michael Crisp, Registered Architect
All rights reserved. No reproduction or translation of any part of this document is permitted without the express written consent of Michael Crisp, Architect.

