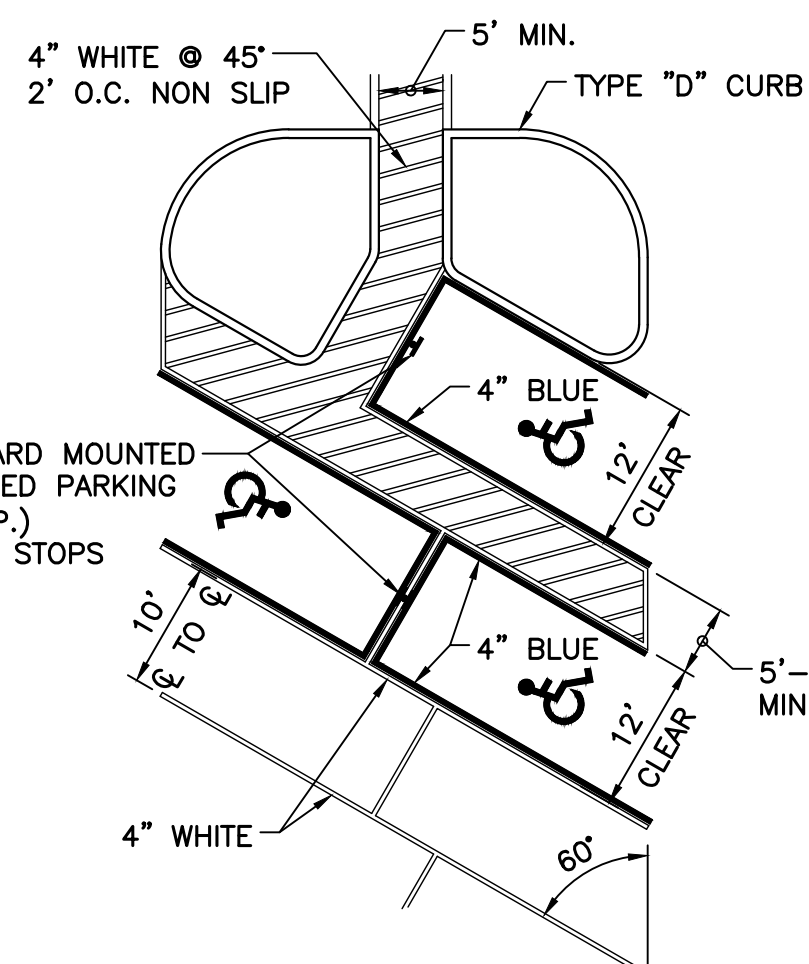
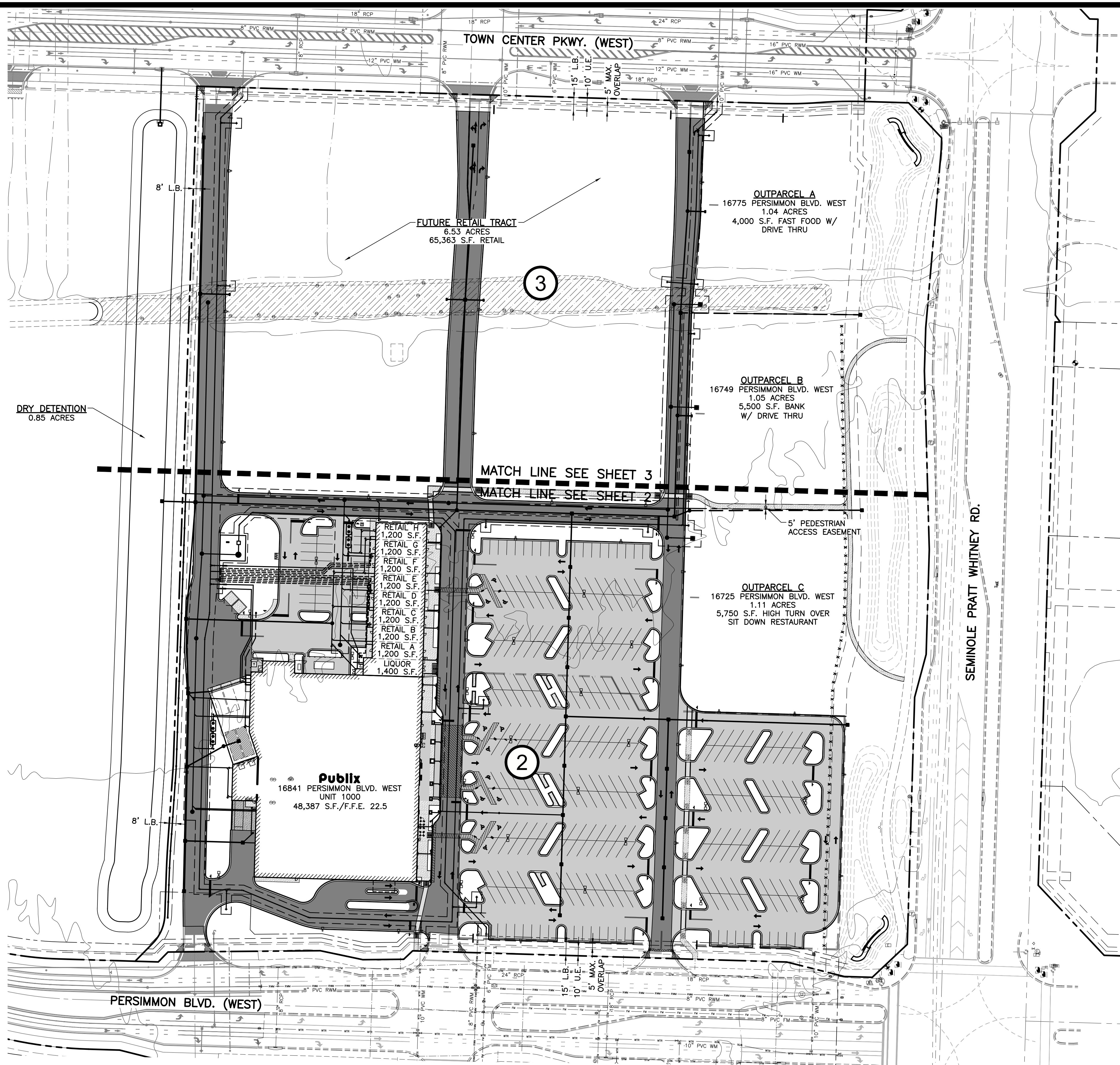


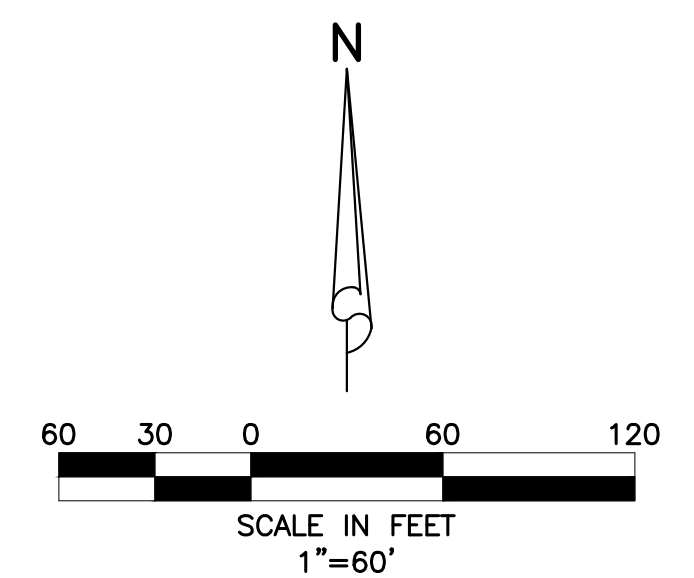
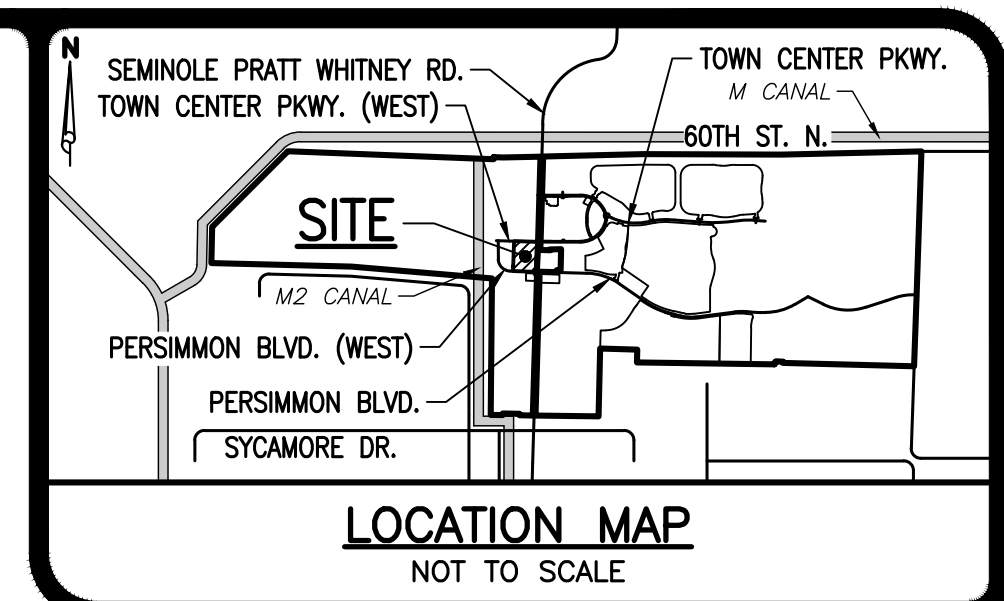
PUBLIX LIQUOR	UNIT 1100	16841 PERSIMMON BLVD. WEST
RETAIL A	UNIT 1200	16841 PERSIMMON BLVD. WEST
RETAIL B	UNIT 1300	16841 PERSIMMON BLVD. WEST
RETAIL C	UNIT 1400	16841 PERSIMMON BLVD. WEST
RETAIL D	UNIT 1500	16841 PERSIMMON BLVD. WEST
RETAIL E	UNIT 1600	16841 PERSIMMON BLVD. WEST
RETAIL F	UNIT 1700	16841 PERSIMMON BLVD. WEST
RETAIL G	UNIT 1800	16841 PERSIMMON BLVD. WEST
RETAIL H	UNIT 1900	16841 PERSIMMON BLVD. WEST



**60° HANDICAP PARKING DETAIL**  
NOT TO SCALE



DRY DETENTION  
0.85 ACRES



- LEGEND**
- PROPOSED STORM SEWER AND CATCH BASIN
  - PROPOSED STORM SEWER AND MANHOLE
  - PROPOSED LIGHT-DUTY ASPHALT PAVEMENT
  - PROPOSED HEAVY-DUTY ASPHALT PAVEMENT
  - PROPOSED CONCRETE
  - PROPOSED DETECTABLE WARNING SURFACE
  - EXISTING CANAL TO BE FILLED
  - SEWER SERVICE W/ CLEAN-OUT
  - FIRE HYDRANT W/ GATE VALVE
  - PROPOSED SANITARY SEWER LINE, MANHOLE & FLOW DIRECTION
  - WATER SERVICE & R.P.Z. (REFER TO POTABLE WATER SERVICE SINGLE METER INSTALLATION DETAIL.)
  - PROPOSED DIRECTIONAL ARROW
  - PROPOSED 24" STOP BAR, "STOP" SIGN & 6" DOUBLE YELLOW STRIPE
  - EXISTING STORM DRAINAGE PIPE
  - EXISTING WATER MAIN
  - EXISTING SEWER MAIN
  - EXISTING FORCE MAIN
  - EXISTING RECLAIMED WATER MAIN
  - ② SEE SHEET NUMBER FOR INFORMATION

**DATUM NOTES:**  
1) ALL ELEVATIONS AND BENCHMARKS SHOWN HEREON ARE RELATIVE TO THE NORTH AMERICAN VERTICAL DATUM (N.A.V.D.) OF 1988 BASED ON A SURVEY PREPARED BY CAULFIELD & WHEELER, INC. (561) 392-1991.  
2) AN APPROXIMATE CONVERSION BETWEEN THE NATIONAL GEODETIC VERTICAL DATUM (N.G.V.D.) OF 1929 AND N.A.V.D. CAN BE MADE BY ADDING 1.47 TO THE N.A.V.D. ELEVATION TO OBTAIN THE N.G.V.D. ELEVATION.

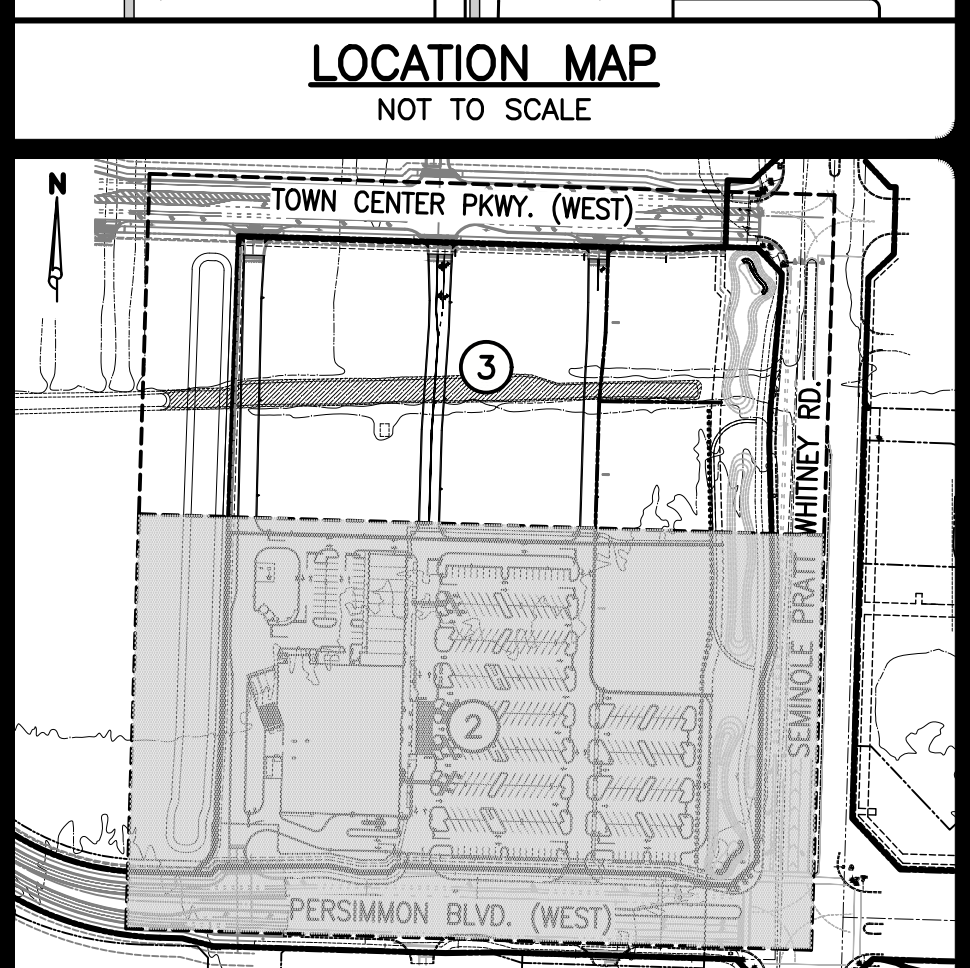
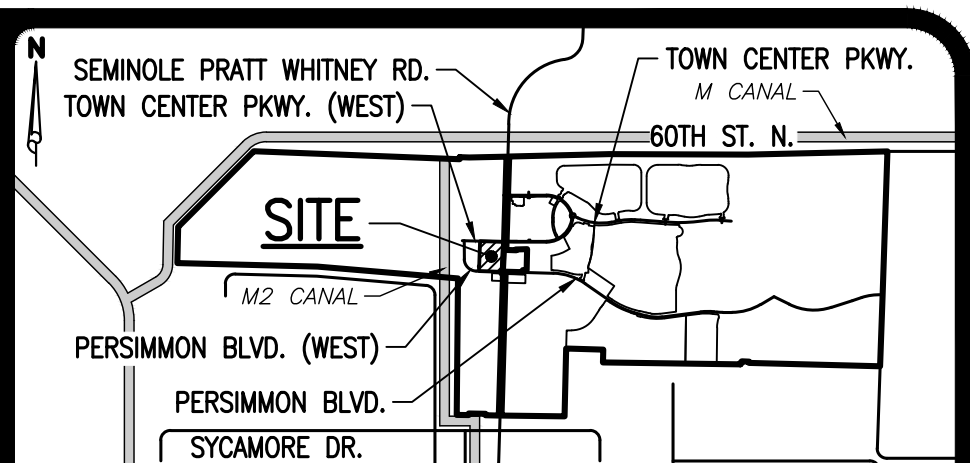
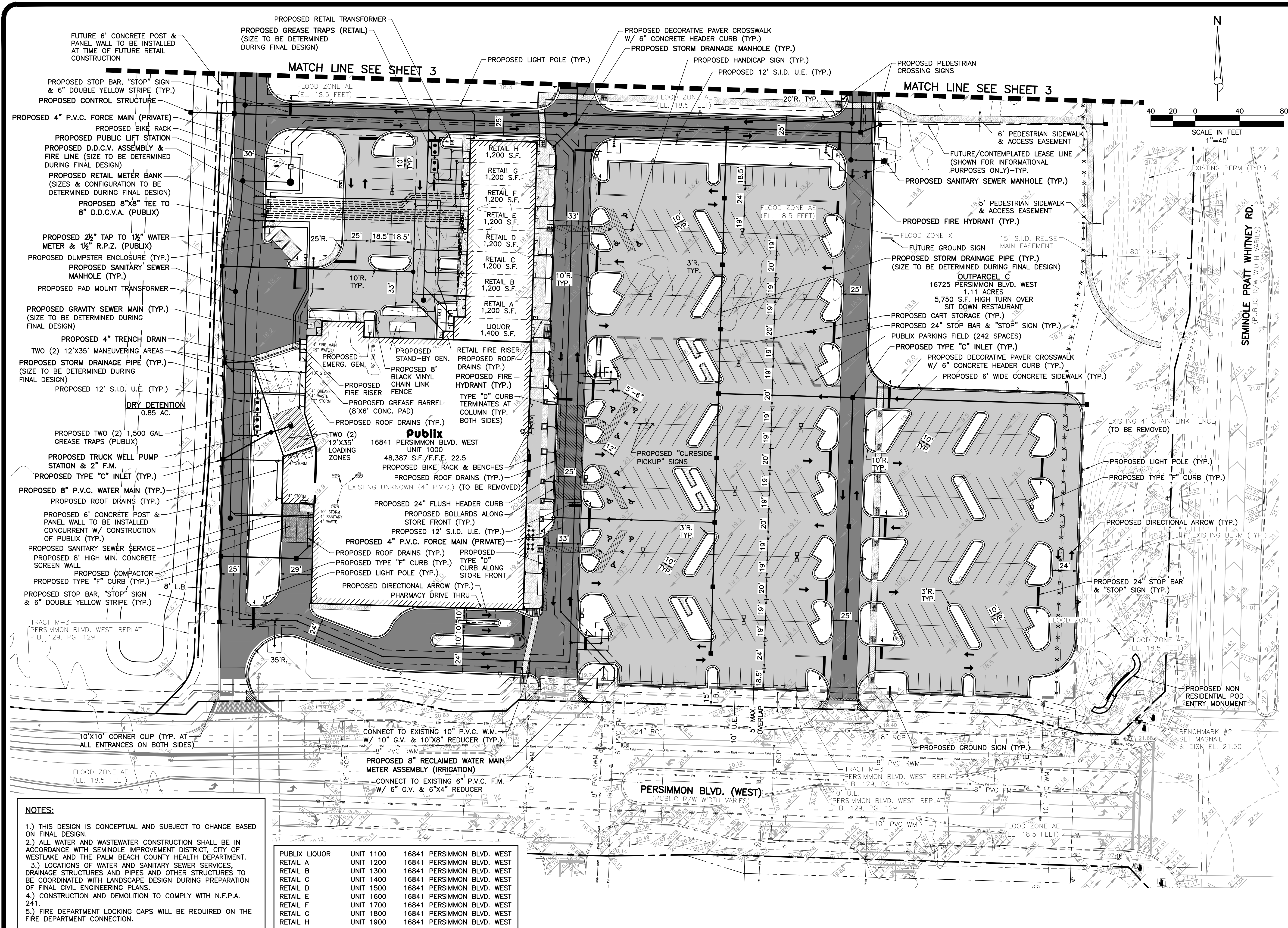
9/30/2020



**PUBLIX AT WESTLAKE PLAZA**  
SECTION 01, TOWNSHIP 43S., RANGE 40E.  
CITY OF WESTLAKE, FLORIDA  
**CONCEPTUAL MASTER PLAN**

DESIGN G.B.	DRAWN D.B.	CHECKED	APPROVED	DATE	JOB NO. 20-084	DRAWING NO. 20084C01	SHEET 1	OF 3
----------------	---------------	---------	----------	------	-------------------	-------------------------	------------	---------





**THIS SHEET**      **KEY MAP**  
NOT TO SCALE      NOT TO SCALE

- LEGEND**
- PROPOSED STORM SEWER AND CATCH BASIN
  - PROPOSED STORM SEWER AND MANHOLE
  - DIRECTION OF FLOW
  - DIRECTION OF SWALE
  - PROPOSED HIGH POINT
  - EXISTING GRADE ELEVATION
  - PROPOSED LIGHT-DUTY ASPHALT PAVEMENT
  - PROPOSED HEAVY-DUTY ASPHALT PAVEMENT
  - PROPOSED CONCRETE
  - PROPOSED DETECTABLE WARNING SURFACE
  - EXISTING CANAL TO BE FILLED
  - SEWER SERVICE W/ CLEAN-OUT
  - FIRE HYDRANT W/ GATE VALVE
  - PROPOSED SANITARY SEWER LINE, MANHOLE & FLOW DIRECTION
  - WATER SERVICE & R.P.Z. (REFER TO POTABLE WATER SERVICE SINGLE METER INSTALLATION DETAIL)
  - PROPOSED DIRECTIONAL ARROW
  - 
  - PROPOSED LIGHT POLE
  - PROPOSED BIKE RACK
  - PROPOSED BENCH
  - EXISTING STORM DRAINAGE PIPE
  - EXISTING WATER MAIN
  - EXISTING SEWER MAIN
  - EXISTING FORCE MAIN
  - EXISTING RECLAIMED WATER MAIN

**NOTES:**

- THIS DESIGN IS CONCEPTUAL AND SUBJECT TO CHANGE BASED ON FINAL DESIGN.
- ALL WATER AND WASTEWATER CONSTRUCTION SHALL BE IN ACCORDANCE WITH SEMINOLE IMPROVEMENT DISTRICT, CITY OF WESTLAKE AND THE PALM BEACH COUNTY HEALTH DEPARTMENT.
- LOCATIONS OF WATER AND SANITARY SEWER SERVICES, DRAINAGE STRUCTURES AND PIPES AND OTHER STRUCTURES TO BE COORDINATED WITH LANDSCAPE DESIGN DURING PREPARATION OF FINAL CIVIL ENGINEERING PLANS.
- CONSTRUCTION AND DEMOLITION TO COMPLY WITH N.F.P.A. 241.
- FIRE DEPARTMENT LOCKING CAPS WILL BE REQUIRED ON THE FIRE DEPARTMENT CONNECTION.

PUBLIX LIQUOR	UNIT 1100	16841 PERSIMMON BLVD. WEST
RETAIL A	UNIT 1200	16841 PERSIMMON BLVD. WEST
RETAIL B	UNIT 1300	16841 PERSIMMON BLVD. WEST
RETAIL C	UNIT 1400	16841 PERSIMMON BLVD. WEST
RETAIL D	UNIT 1500	16841 PERSIMMON BLVD. WEST
RETAIL E	UNIT 1600	16841 PERSIMMON BLVD. WEST
RETAIL F	UNIT 1700	16841 PERSIMMON BLVD. WEST
RETAIL G	UNIT 1800	16841 PERSIMMON BLVD. WEST
RETAIL H	UNIT 1900	16841 PERSIMMON BLVD. WEST

**DATUM NOTES:**

- ALL ELEVATIONS AND BENCHMARKS SHOWN HEREON ARE RELATIVE TO THE NORTH AMERICAN VERTICAL DATUM (N.A.V.D.) OF 1988 BASED ON A SURVEY PREPARED BY CAULFIELD & WHEELER, INC. (561) 392-1991.
- AN APPROXIMATE CONVERSION BETWEEN THE NATIONAL GEODETIC VERTICAL DATUM (N.G.V.D.) OF 1929 AND N.A.V.D. CAN BE MADE BY ADDING 1.47 TO THE N.A.V.D. ELEVATION TO OBTAIN THE N.G.V.D. ELEVATION.

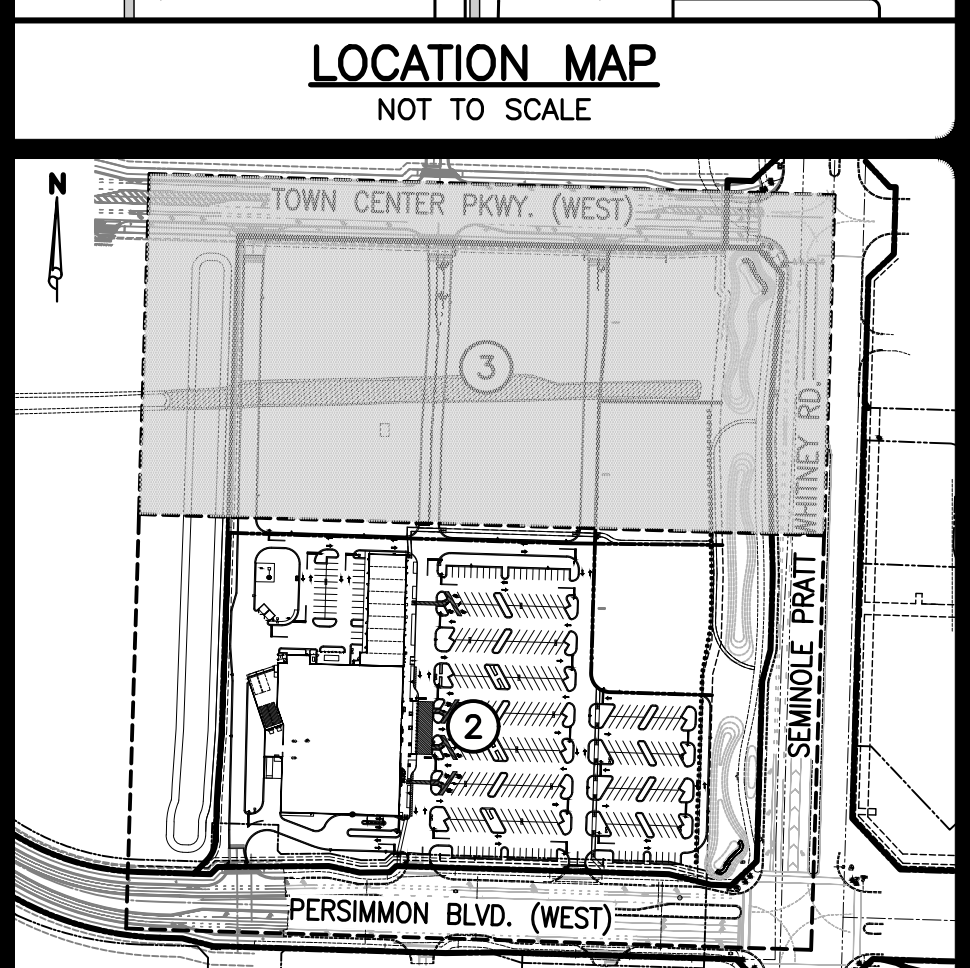
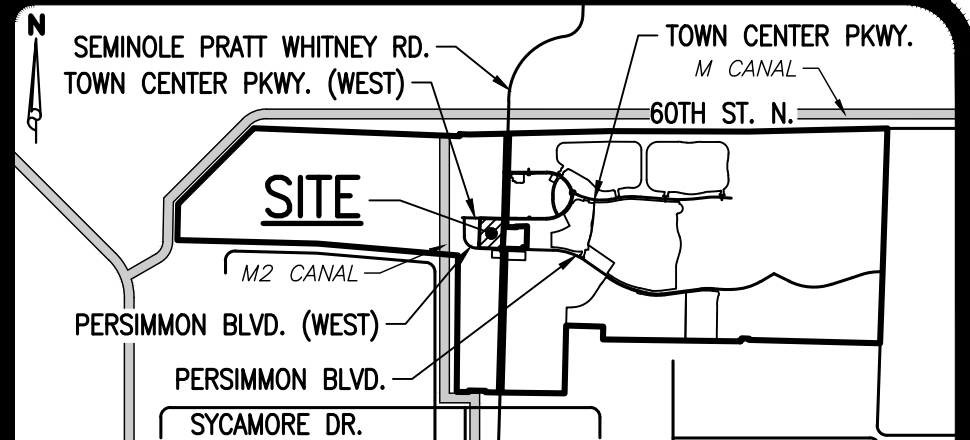
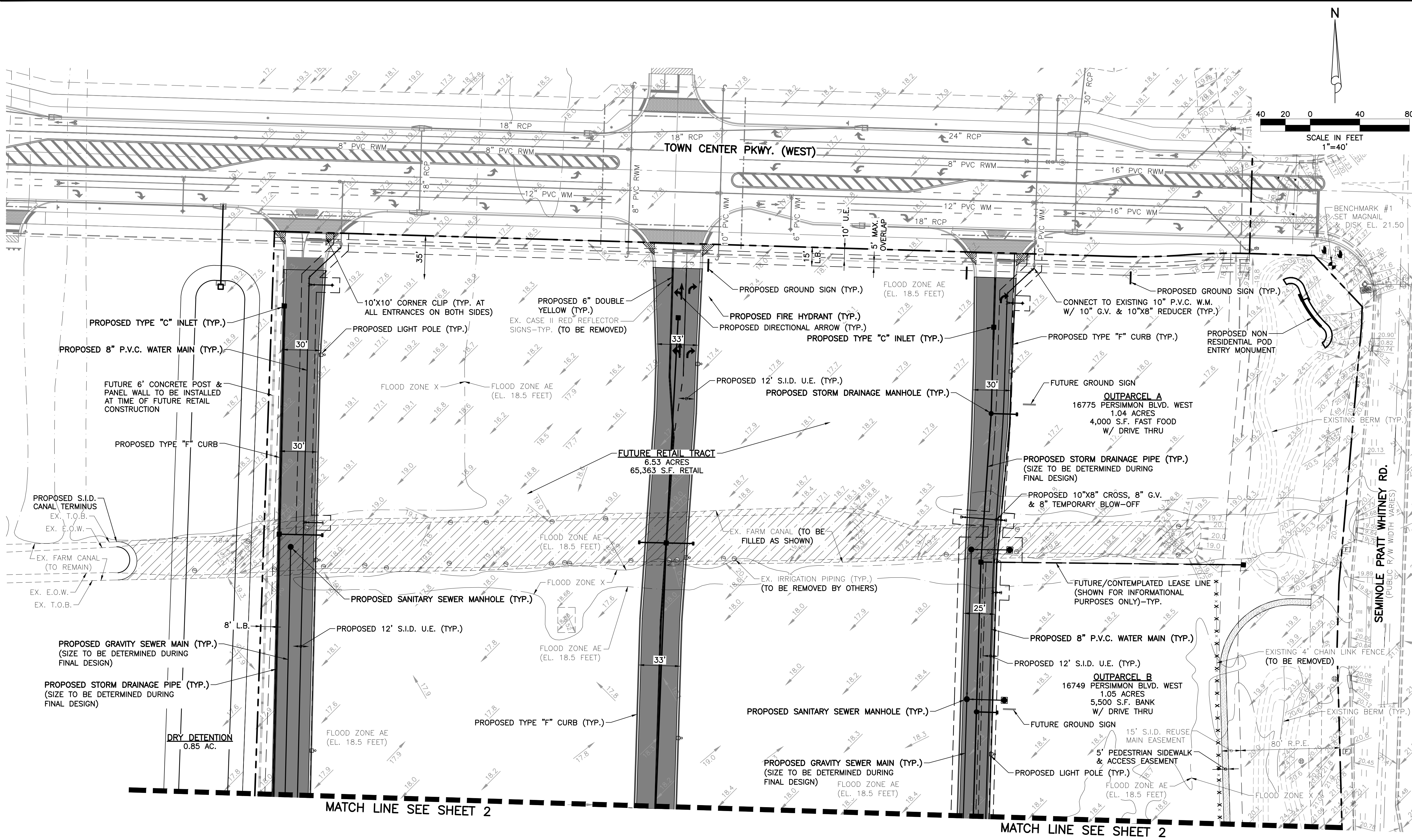
**REVISIONS**

DESIGN	DRAWN	CHECKED	APPROVED	DATE
G.B.	D.B.			



**PUBLIX AT WESTLAKE PLAZA**  
SECTION 01, TOWNSHIP 43S., RANGE 40E.  
CITY OF WESTLAKE, FLORIDA  
CONCEPTUAL PAVING, DRAINAGE,  
WATER AND WASTEWATER PLAN





**LEGEND**

- PROPOSED STORM SEWER AND CATCH BASIN
- PROPOSED STORM SEWER AND MANHOLE
- DIRECTION OF FLOW
- W— DIRECTION OF SWALE
- X— PROPOSED HIGH POINT
- 19.2— EXISTING GRADE ELEVATION
- PROPOSED LIGHT-DUTY ASPHALT PAVEMENT
- PROPOSED HEAVY-DUTY ASPHALT PAVEMENT
- PROPOSED CONCRETE
- PROPOSED DETECTABLE WARNING SURFACE
- EXISTING CANAL TO BE FILLED
- SEWER SERVICE W/ CLEAN-OUT
- FIRE HYDRANT W/ GATE VALVE
- PROPOSED SANITARY SEWER LINE, MANHOLE & FLOW DIRECTION
- WATER SERVICE & R.P.Z. (REFER TO POTABLE WATER SERVICE SINGLE METER INSTALLATION DETAIL.)
- PROPOSED DIRECTIONAL ARROW
- PROPOSED 24" STOP BAR, "STOP" SIGN & 6" DOUBLE YELLOW STRIPE
- PROPOSED LIGHT POLE
- PROPOSED BIKE RACK
- PROPOSED BENCH
- EXISTING STORM DRAINAGE PIPE
- EXISTING WATER MAIN
- EXISTING SEWER MAIN
- EXISTING FORCE MAIN
- EXISTING RECLAIMED WATER MAIN

**NOTES:**

- 1.) THIS DESIGN IS CONCEPTUAL AND SUBJECT TO CHANGE BASED ON FINAL DESIGN.
- 2.) ALL WATER AND WASTEWATER CONSTRUCTION SHALL BE IN ACCORDANCE WITH SEMINOLE IMPROVEMENT DISTRICT, CITY OF WESTLAKE AND THE PALM BEACH COUNTY HEALTH DEPARTMENT.
- 3.) LOCATIONS OF WATER AND SANITARY SEWER SERVICES, DRAINAGE STRUCTURES AND PIPES AND OTHER STRUCTURES TO BE COORDINATED WITH LANDSCAPE DESIGN DURING PREPARATION OF FINAL CIVIL ENGINEERING PLANS.
- 4.) CONSTRUCTION AND DEMOLITION TO COMPLY WITH N.F.P.A. 241.
- 5.) FIRE DEPARTMENT LOCKING CAPS WILL BE REQUIRED ON THE FIRE DEPARTMENT CONNECTION.

**DATUM NOTES:**

- 1) ALL ELEVATIONS AND BENCHMARKS SHOWN HEREON ARE RELATIVE TO THE NORTH AMERICAN VERTICAL DATUM (N.A.V.D.) OF 1988 BASED ON A SURVEY PREPARED BY CAULFIELD & WHEELER, INC. (561) 392-1991.
- 2) AN APPROXIMATE CONVERSION BETWEEN THE NATIONAL GEODETIC VERTICAL DATUM (N.G.V.D.) OF 1929 AND N.A.V.D. CAN BE MADE BY ADDING 1.47 TO THE N.A.V.D. ELEVATION TO OBTAIN THE N.G.V.D. ELEVATION.

REVISIONS		DESIGN		DRAWN		CHECKED		APPROVED		DATE	
		G.B.		D.B.							



**PUBLIX AT WESTLAKE PLAZA**  
 SECTION 01, TOWNSHIP 43S., RANGE 40E.  
 CITY OF WESTLAKE, FLORIDA  
**CONCEPTUAL PAVING, DRAINAGE,  
 WATER AND WASTEWATER PLAN**

9/30/2020