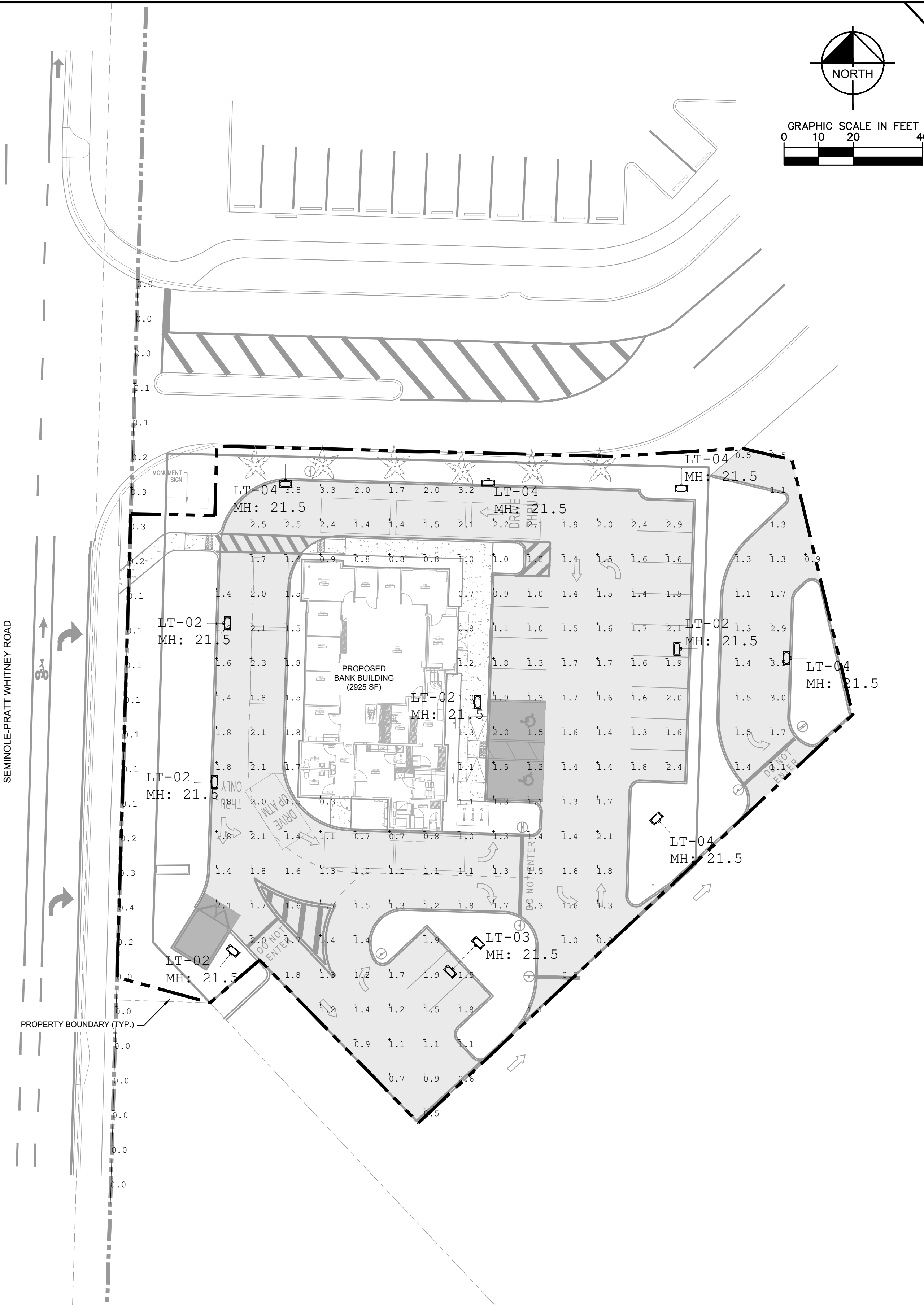


Plotted By: Quercus, Thingo (LJL) - Sheet: GROVE MARKETPLACE CHASE - Layout: PHOTO December 16, 2024 05:05:56pm K:\NTP-Civil\145538 - Premier Developers\000 - Grove Marketplace\CADD\PlanSheets\Photometric.dwg
 This document, together with the concepts and designs presented herein, is intended only for the specific purpose and client for which it was prepared. Reuse of and improper reliance on this document without written authorization and adaptation by Kimley-Horn and Associates, Inc. shall be without liability to Kimley-Horn and Associates, Inc.



Symbol	Qty	Label	Arrangement	Tag	LLF	Luminaire Lumens	Luminaire Watts	Total Watts
□	5	B2-S	Single	LT-04	0.850	4560	36	180
□	5	B4-S	Single	LT-02	0.850	4570	36	180
□	1	B4-S2	Back-Back	LT-03	0.850	4570	36	72

Label	CalcType	Units	Avg	Max	Min	Avg/Min	Max/Min
Property Line	Illuminance	Fc	0.11	0.4	0.0	N.A.	N.A.
Site	Illuminance	Fc	1.52	3.8	0.3	5.07	12.67
Building Entrance	Illuminance	Fc	1.00	1.2	0.8	1.25	1.50
Parking	Illuminance	Fc	1.60	2.9	0.9	1.78	3.22
Roadway	Illuminance	Fc	1.57	3.8	0.5	3.14	7.60

EVOLVE
 EACL® Series
 LED Area Light/Compact Low Wattage

Current LED.com

Specifications:
 Luminaire Schedule: B2-S, B4-S, B4-S2
 Optics: 100° Beam Angle
 Mounting: 21.5' Height
 Power: 36W
 Lumens: 4560 (B2-S), 4570 (B4-S)

EVOLVE
 EACL® Series
 LED Area Light/Compact Low Wattage

Current LED.com

Photometric Data:
 Beam Angle: 100°
 Mounting Height: 21.5'
 Coverage Area: 1000 sq ft

EVOLVE
 EACL® Series
 LED Area Light/Compact Low Wattage

Current LED.com

Accessories:
 Back Light Shield
 Mounting Arms for Slipfitter Order

EVOLVE
 EACL® Series
 LED Area Light/Compact Low Wattage

Current LED.com

Ordering Information:
 Part Numbers: EACL-01, EACL-02, EACL-03, EACL-04, EACL-05, EACL-06, EACL-07, EACL-08, EACL-09, EACL-10, EACL-11, EACL-12, EACL-13, EACL-14, EACL-15, EACL-16, EACL-17, EACL-18, EACL-19, EACL-20, EACL-21, EACL-22, EACL-23, EACL-24, EACL-25, EACL-26, EACL-27, EACL-28, EACL-29, EACL-30, EACL-31, EACL-32, EACL-33, EACL-34, EACL-35, EACL-36, EACL-37, EACL-38, EACL-39, EACL-40, EACL-41, EACL-42, EACL-43, EACL-44, EACL-45, EACL-46, EACL-47, EACL-48, EACL-49, EACL-50, EACL-51, EACL-52, EACL-53, EACL-54, EACL-55, EACL-56, EACL-57, EACL-58, EACL-59, EACL-60, EACL-61, EACL-62, EACL-63, EACL-64, EACL-65, EACL-66, EACL-67, EACL-68, EACL-69, EACL-70, EACL-71, EACL-72, EACL-73, EACL-74, EACL-75, EACL-76, EACL-77, EACL-78, EACL-79, EACL-80, EACL-81, EACL-82, EACL-83, EACL-84, EACL-85, EACL-86, EACL-87, EACL-88, EACL-89, EACL-90, EACL-91, EACL-92, EACL-93, EACL-94, EACL-95, EACL-96, EACL-97, EACL-98, EACL-99, EACL-100

EVOLVE
 EACL® Series
 LED Area Light/Compact Low Wattage

Current LED.com

Mounting Options:
 H-Motion Sensing Option
 MHA - Motion Sensing Option (WattStopper)
 H2 - Motion Sensing Option (Dialtune)

EVOLVE
 EACL® Series
 LED Area Light/Compact Low Wattage

Current LED.com

Mounting Arms:
 Mounting Arms for Slipfitter Order
 Round Pole Mounting Drilling Template
 Wall Mounting Bracket Adapter Plate

EVOLVE
 EACL® Series
 LED Area Light/Compact Low Wattage

Current LED.com

Photometric Data:
 Beam Angle: 100°
 Mounting Height: 21.5'
 Coverage Area: 1000 sq ft

EVOLVE
 EACL® Series
 LED Area Light/Compact Low Wattage

Current LED.com

Photometric Data:
 Beam Angle: 100°
 Mounting Height: 21.5'
 Coverage Area: 1000 sq ft

EVOLVE
 EACL® Series
 LED Area Light/Compact Low Wattage

Current LED.com

Photometric Data:
 Beam Angle: 100°
 Mounting Height: 21.5'
 Coverage Area: 1000 sq ft

EVOLVE
 EACL® Series
 LED Area Light/Compact Low Wattage

Current LED.com

Photometric Data:
 Beam Angle: 100°
 Mounting Height: 21.5'
 Coverage Area: 1000 sq ft

EVOLVE
 EACL® Series
 LED Area Light/Compact Low Wattage

Current LED.com

Photometric Data:
 Beam Angle: 100°
 Mounting Height: 21.5'
 Coverage Area: 1000 sq ft

EVOLVE
 EACL® Series
 LED Area Light/Compact Low Wattage

Current LED.com

Photometric Data:
 Beam Angle: 100°
 Mounting Height: 21.5'
 Coverage Area: 1000 sq ft

PHOTOMETRIC NOTES:

- PHOTOMETRIC CALCULATION WAS PERFORMED USING THE AGI32 -V20. SOFTWARE BY LIGHTING ANALYSTS. LIGHTING CALCULATIONS HAVE BEEN PERFORMED ACCORDING TO TARGET VALUES PER TENANT STANDARD VALUES AND IN GOOD PRACTICE. SOME DIFFERENCES BETWEEN CALCULATED VALUES AND MEASURED RESULTS MAY OCCUR DUE TO TOLERANCES IN CALCULATION METHODS, REFLECTANCE, TESTING PROCEDURES, SOFTWARE UTILIZED, LUMINAIRE COMPONENT PERFORMANCES, MEASUREMENT TECHNIQUES, AND FIELD CONDITIONS SUCH AS ALTERED LUMINAIRE LOCATIONS, VOLTAGE, AND TEMPERATURE VARIATIONS. INPUT DATA USED TO GENERATE THE ATTACHED OBSTRUCTIONS, AND ARCHITECTURAL ELEMENTS CAN SIGNIFICANTLY AFFECT THE LIGHTING CALCULATIONS. IF THE REAL ENVIRONMENT CONDITIONS DO NOT MATCH THE INPUT DATA, DIFFERENCES WILL OCCUR BETWEEN CALCULATED AND MEASURED VALUES.
- FOOT-CANDLE REQUIREMENTS ARE AS FOLLOWS:
 - ALL SECURITY LIGHTING - PARKING AREAS
 - MAXIMUM FC = 3.0 MAXIMUM FC = 10.0
 - MINIMUM FC = 0.3 MINIMUM FC = 1.0
 - AVERAGE FC >= 0.75 AVERAGE FC >= 10:1
 - MAX/MIN <= 10:1
 - AVERAGE/MIN >= 4:1
- ALL LIGHT POLES TO BE MOUNTED AT 21.5 FEET ABOVE GRADE
 MH = MOUNTING HEIGHT

Kimley-Horn & Associates, Inc.
 2800 W. PETERSBURG BL., SUITE 1370
 PETERSBURG, VA 23104
 PHONE: 757-547-5898 WWW.KIMLEY-HORN.COM
 REGISTRY NO. 35108

GROVE MARKETPLACE
 CITY OF WESTLAKE
 FLORIDA

PHOTOMETRIC PLAN

DATE: 12/16/2024
 PROJECT NO. 145538000
 SHEET NUMBER PH-100

SCALE: AS SHOWN
 DESIGNED BY: TSQ
 DRAWN BY: TSQ
 CHECKED BY: IPF

REVISIONS: No. DATE