

**SHEET 1 OF 7**

**NOTES  
COORDINATES, BEARINGS AND DISTANCES**

COORDINATES SHOWN ARE GRID  
 DATUM = NAD 83 (2007 ADJUSTMENT)  
 ZONE = FLORIDA EAST  
 LINEAR UNIT = US SURVEY FEET  
 COORDINATE SYSTEM 1983 STATE PLANE  
 TRANSVERSE MERCATOR PROJECTION  
 ALL DISTANCES ARE GROUND  
 SCALE FACTOR = 1.0000017  
 GROUND DISTANCE X SCALE FACTOR = GRID DISTANCE  
 BEARINGS AS SHOWN HEREON ARE GRID DATUM,  
 NAD 83 (2007 ADJUSTMENT), FLORIDA EAST ZONE.

**LEGEND/ABBREVIATIONS**

- CL - CENTERLINE
- Δ - DELTA (CENTRAL ANGLE)
- CB - CHORD BEARING
- CD - CHORD DISTANCE
- D.E. - DRAINAGE EASEMENT
- E - EASTING (WHEN USED WITH COORDINATES)
- L - ARC LENGTH
- L.A.E. - LIMITED ACCESS EASEMENT
- LB - LICENSED BUSINESS
- L.M.A.E. - LAKE MAINTENANCE ACCESS EASEMENT
- L.M.E. - LAKE MAINTENANCE EASEMENT
- N - NORTHING (WHEN USED WITH COORDINATES)
- PC - POINT OF CURVATURE
- PT - POINT OF TANGENCY
- PNT - POINT OF NON-TANGENCY
- PRC - POINT OF REVERSE CURVATURE
- R - RADIUS
- R.P.E. - RURAL PARKWAY EASEMENT
- U.E. - UTILITY EASEMENT
- PRM - SET PERMANENT REFERENCE MONUMENT SET 5/8" IRON ROD WITH CAP STAMPED "C&W PRM LB3591"
- PRM - FOUND PERMANENT REFERENCE MONUMENT 4"x 4"x 24" CONCRETE MONUMENT WITH DISK STAMPED "PRM LB7768"

**DESCRIPTION:**

A PORTION OF TRACT O.S.T. 20, CRESSWIND PALM BEACH PHASE 2, AS RECORDED IN PLAT BOOK 130, PAGES 199 THROUGH 205 OF THE PUBLIC RECORDS OF PALM BEACH COUNTY, FLORIDA AND A PLAT OF A PORTION OF SECTIONS 6 AND 7, TOWNSHIP 43 SOUTH, RANGE 41 EAST AND SECTION 12, TOWNSHIP 43 SOUTH, RANGE 40 EAST, CITY OF WESTLAKE, PALM BEACH COUNTY FLORIDA, CITY OF WESTLAKE, PALM BEACH COUNTY FLORIDA, BEING MORE PARTICULARLY DESCRIBED AS FOLLOWS:

BEGINNING AT THE NORTHEAST CORNER OF TRACT W-5, CRESSWIND PALM BEACH PHASE 1, AS RECORDED IN PLAT BOOK 128, PAGES 96 THROUGH 105 OF THE PUBLIC RECORDS OF PALM BEACH COUNTY, FLORIDA; SAID POINT BEING THE BEGINNING OF A CURVE TO THE LEFT, OF WHICH THE RADIUS POINT LIES N.32°22'33"E., A RADIAL DISTANCE OF 1,670.00 FEET; THENCE SOUTHEASTERLY ALONG THE SOUTH LINE OF SAID CRESSWIND PALM BEACH PHASE 1 ALONG THE ARC, THROUGH A CENTRAL ANGLE OF 03°36'14", A DISTANCE OF 105.04 FEET; THENCE S.15°20'22"E. ALONG THE SOUTH LINE OF SAID CRESSWIND PALM BEACH PHASE 1, A DISTANCE OF 34.53 FEET; THENCE S.63°02'55"E. ALONG THE SOUTH LINE OF SAID CRESSWIND PALM BEACH PHASE 1, A DISTANCE OF 56.14 FEET; THENCE S.30°58'41"W., A DISTANCE OF 8.77 FEET; THENCE S.59°01'19"E., A DISTANCE OF 150.00 FEET; THENCE N.30°58'41"E., A DISTANCE OF 39.07 FEET; THENCE S.59°01'19"E., A DISTANCE OF 157.67 FEET TO THE POINT OF CURVE OF A NON TANGENT CURVE TO THE LEFT, OF WHICH THE RADIUS POINT LIES N.55°03'38"W., A RADIAL DISTANCE OF 122.00 FEET; THENCE NORTHEASTERLY ALONG THE ARC, THROUGH A CENTRAL ANGLE OF 11°40'08", A DISTANCE OF 24.85 FEET; THE PREVIOUS FIVE COURSES AND DISTANCES ARE ALONG THE SOUTH LINE OF SAID CRESSWIND PALM BEACH PHASE 2; THENCE N.28°09'40"W., A DISTANCE OF 34.77 FEET TO A POINT OF INTERSECTION WITH THE NORTH LINE OF SAID TRACT O.S.T. 20 AND A POINT OF CURVE OF A NON TANGENT CURVE TO THE LEFT, OF WHICH THE RADIUS POINT LIES N.16°19'54"E., A RADIAL DISTANCE OF 1670.00 FEET, THENCE EASTERLY ALONG SAID NORTH LINE OF TRACT O.S.T. 20 ALONG THE ARC, THROUGH A CENTRAL ANGLE OF 03°38'13", A DISTANCE OF 106.00 FEET; THENCE S.59°56'06"W., A DISTANCE OF 35.16 FEET TO A POINT OF INTERSECTION WITH THE SOUTH LINE OF SAID O.S.T. 20; THENCE S.69°48'37"E., A DISTANCE OF 129.18 FEET TO THE POINT OF CURVE OF A NON TANGENT CURVE TO THE LEFT, OF WHICH THE RADIUS POINT LIES N.70°12'01"W., A RADIAL DISTANCE OF 380.41 FEET; THENCE NORTHERLY ALONG THE ARC, THROUGH A CENTRAL ANGLE OF 06°39'03", A DISTANCE OF 44.16 FEET TO THE POINT OF CURVE OF A NON TANGENT CURVE TO THE LEFT, OF WHICH THE RADIUS POINT LIES N.09°05'04"E., A RADIAL DISTANCE OF 1,670.00 FEET; THENCE EASTERLY ALONG THE ARC, THROUGH A CENTRAL ANGLE OF 07°26'20", A DISTANCE OF 216.82 FEET TO THE POINT OF CURVE OF A NON TANGENT CURVE TO THE LEFT, OF WHICH THE RADIUS POINT LIES N.88°42'26"E., A RADIAL DISTANCE OF 2028.54 FEET, THE PREVIOUS THREE COURSES AND DISTANCES ARE ALONG THE SOUTH LINE OF SAID CRESSWIND PALM BEACH PHASE 2; THENCE SOUTHERLY ALONG THE LAST DESCRIBED CURVE TO THE LEFT, THROUGH A CENTRAL ANGLE OF 00°41'55", A DISTANCE OF 24.74 FEET TO THE POINT OF CURVE OF A NON TANGENT CURVE TO THE RIGHT, OF WHICH THE RADIUS POINT LIES S.89°40'14"W., A RADIAL DISTANCE OF 196.92 FEET; THENCE SOUTHERLY ALONG THE ARC, THROUGH A CENTRAL ANGLE OF 18°24'54", A DISTANCE OF 63.29 FEET; THENCE S.16°16'48"W., A DISTANCE OF 317.01 FEET TO THE POINT OF CURVE OF A NON TANGENT CURVE TO THE LEFT, OF WHICH THE RADIUS POINT LIES S.73°24'03"E., A RADIAL DISTANCE OF 1,295.47 FEET; THENCE SOUTHERLY ALONG THE ARC, THROUGH A CENTRAL ANGLE OF 13°06'43", A DISTANCE OF 296.46 FEET; THENCE S.10°53'13"W., A DISTANCE OF 56.01 FEET; THENCE S.57°18'31"W., A DISTANCE OF 35.62 FEET; THENCE N.78°06'51"W., A DISTANCE OF 56.00 FEET; THENCE N.33°06'51"W., A DISTANCE OF 35.36 FEET; THENCE N.78°06'51"W., A DISTANCE OF 24.70 FEET TO A POINT OF CURVE TO THE LEFT HAVING A RADIUS OF 1,172.00 FEET AND A CENTRAL ANGLE OF 03°55'43"; THENCE WESTERLY ALONG THE ARC A DISTANCE OF 80.36 FEET; THENCE S.11°53'09"W., A DISTANCE OF 199.93 FEET TO A POINT OF CURVE TO THE RIGHT HAVING A RADIUS OF 742.00 FEET AND A CENTRAL ANGLE OF 22°44'41"; THENCE SOUTHWESTERLY ALONG THE ARC A DISTANCE OF 294.55 FEET; THENCE S.34°37'50"W., A DISTANCE OF 49.53 FEET TO THE POINT OF CURVE OF A NON TANGENT CURVE TO THE LEFT, OF WHICH THE RADIUS POINT LIES S.25°04'33"W., A RADIAL DISTANCE OF 458.00 FEET; THENCE WESTERLY ALONG THE ARC, THROUGH A CENTRAL ANGLE OF 09°51'49", A DISTANCE OF 78.85 FEET; THENCE N.74°47'16"W., A DISTANCE OF 56.57 FEET; THENCE S.15°12'44"W., A DISTANCE OF 130.00 FEET; THENCE S.74°47'16"E., A DISTANCE OF 50.00 FEET; THENCE S.06°43'42"W., A DISTANCE OF 56.63 FEET; THENCE S.15°35'19"W., A DISTANCE OF 241.18 FEET TO A POINT OF INTERSECTION WITH THE NORTH LINE OF PERSIMMON BOULEVARD EAST- PLAT 3, AS RECORDED IN ROAD PLAT BOOK 12, PAGES 158 THROUGH 160 OF SAID PUBLIC RECORDS; THENCE N.75°15'28"W. ALONG SAID NORTH LINE AND THE NORTH LINE OF PERSIMMON BOULEVARD EAST- PLAT 2, AS RECORDED IN PLAT BOOK 128, PAGES 16 THROUGH 19 OF SAID PUBLIC RECORDS, A DISTANCE OF 117.03 FEET; THENCE S.14°45'31"W. ALONG THE NORTH LINE OF PERSIMMON BOULEVARD EAST - PLAT 2, A DISTANCE OF 11.00 FEET; THENCE N.75°14'29"W. ALONG THE NORTH LINE OF PERSIMMON BOULEVARD EAST- PLAT 2 AND THE WESTERLY PROJECTION THEREOF, A DISTANCE OF 204.37 FEET TO A POINT OF CURVE TO THE RIGHT HAVING A RADIUS OF 2,797.00 FEET AND A CENTRAL ANGLE OF 19°52'51"; THENCE NORTHWESTERLY ALONG THE ARC A DISTANCE OF 970.52 FEET; THENCE N.55°21'38"W., A DISTANCE OF 213.23 FEET; THENCE N.34°38'22"E., A DISTANCE OF 470.25 FEET; THENCE S.67°44'31"E., A DISTANCE OF 25.73 FEET; THENCE N.14°36'19"E., A DISTANCE OF 100.00 FEET TO THE POINT OF CURVE OF A NON TANGENT CURVE TO THE RIGHT, OF WHICH THE RADIUS POINT LIES N.15°05'17"E., A RADIAL DISTANCE OF 858.00 FEET; THENCE NORTHWESTERLY ALONG THE ARC, THROUGH A CENTRAL ANGLE OF 19°33'05", A DISTANCE OF 292.78 FEET; THENCE N.55°21'38"W., A DISTANCE OF 158.27 FEET; THENCE N.34°38'22"E., A DISTANCE OF 130.00 FEET; THENCE S.55°21'38"E., A DISTANCE OF 40.06 FEET; THENCE N.34°38'22"E., A DISTANCE OF 186.00 FEET, THE PREVIOUS SEVEN COURSES AND DISTANCES ARE ALONG THE EASTERLY BOUNDARY LINE OF SAID CRESSWIND PALM BEACH PHASE 2; THENCE S.55°21'30"E., A DISTANCE OF 118.19 FEET TO A POINT OF CURVE TO THE LEFT HAVING A RADIUS OF 542.00 FEET AND A CENTRAL ANGLE OF 25°17'11"; THENCE EASTERLY ALONG THE ARC A DISTANCE OF 239.20 FEET; THENCE S.80°38'41"E., A DISTANCE OF 496.13 FEET TO THE POINT OF CURVE OF A NON TANGENT CURVE TO THE RIGHT, OF WHICH THE RADIUS POINT LIES S.69°28'42"E., A RADIAL DISTANCE OF 1,083.00 FEET; THENCE NORTHEASTERLY ALONG THE ARC, THROUGH A CENTRAL ANGLE OF 10°27'25", A DISTANCE OF 197.66 FEET; THENCE N.30°58'43"E., A DISTANCE OF 449.55 FEET TO THE POINT OF BEGINNING, THE PREVIOUS FIVE COURSES AND DISTANCES ARE ALONG THE BOUNDARY LINES OF THE AFORESAID TRACT W-5.

CONTAINING 2,240,263 SQUARE FEET OR 51.4294 ACRES, MORE OR LESS.

**SURVEYOR'S NOTES AND REPORT:**

1. REPRODUCTIONS OF THIS SURVEY ARE NOT VALID WITHOUT A SIGNED AND SEALED OR VERIFIABLE ELECTRONIC SIGNATURE OF A FLORIDA LICENSED PROFESSIONAL LAND SURVEYOR AND MAPPER
2. ADDITIONS OR DELETIONS TO SURVEY MAPS OR REPORTS BY OTHER THAN THE SIGNING PARTY OR PARTIES IS PROHIBITED WITHOUT WRITTEN CONSENT OF THE SIGNING PARTY OR PARTIES.
3. THE LAND DESCRIPTION SHOWN HEREON WAS PREPARED BY THE SURVEYOR.
4. BEARINGS SHOWN HEREON ARE BASED ON A RECORD PLAT BEARING OF S.80°38'41"E. ALONG THE SOUTH LINE OF TRACT W-5, CRESSWIND PALM BEACH PHASE 1, AS RECORDED IN PLAT BOOK 128, PAGES 96 THROUGH 105 OF THE PUBLIC RECORDS OF PALM BEACH COUNTY, FLORIDA, AND RELATIVE TO THE FLORIDA STATE PLANE COORDINATE SYSTEM, EAST ZONE, NORTH AMERICAN DATUM OF 1983 (2007 ADJUSTMENT).
5. COORDINATES SHOWN HEREON ARE RELATIVE TO THE FLORIDA STATE PLANE COORDINATE SYSTEM, EAST ZONE, NORTH AMERICAN DATUM OF 1983 (2007 ADJUSTMENT), AND BASED ON REDUNDANT G.P.S. OBSERVATIONS UTILIZING THE CERTIFIED LENGEMAN NETWORK.
6. LANDS SHOWN HEREON WERE NOT ABSTRACTED, BY THE SURVEYOR, FOR RIGHTS-OF-WAY, EASEMENTS, OWNERSHIP, OR OTHER INSTRUMENTS OF RECORD.

**CERTIFICATE:**

I HEREBY CERTIFY THAT THE ATTACHED BOUNDARY SURVEY OF THE HEREON DESCRIBED PROPERTY IS TRUE AND CORRECT TO THE BEST OF MY KNOWLEDGE AND BELIEF AS PREPARED UNDER MY DIRECTION ON FEBRUARY 24, 2021. I FURTHER CERTIFY THAT THIS BOUNDARY SURVEY MEETS THE STANDARDS OF PRACTICE SET FORTH IN RULE 5J-17, FLORIDA ADMINISTRATIVE CODE, ADOPTED BY THE FLORIDA BOARD OF PROFESSIONAL SURVEYORS AND MAPPERS, PURSUANT TO FLORIDA STATUTES 472.027.

REVISIONS	DATE	BY

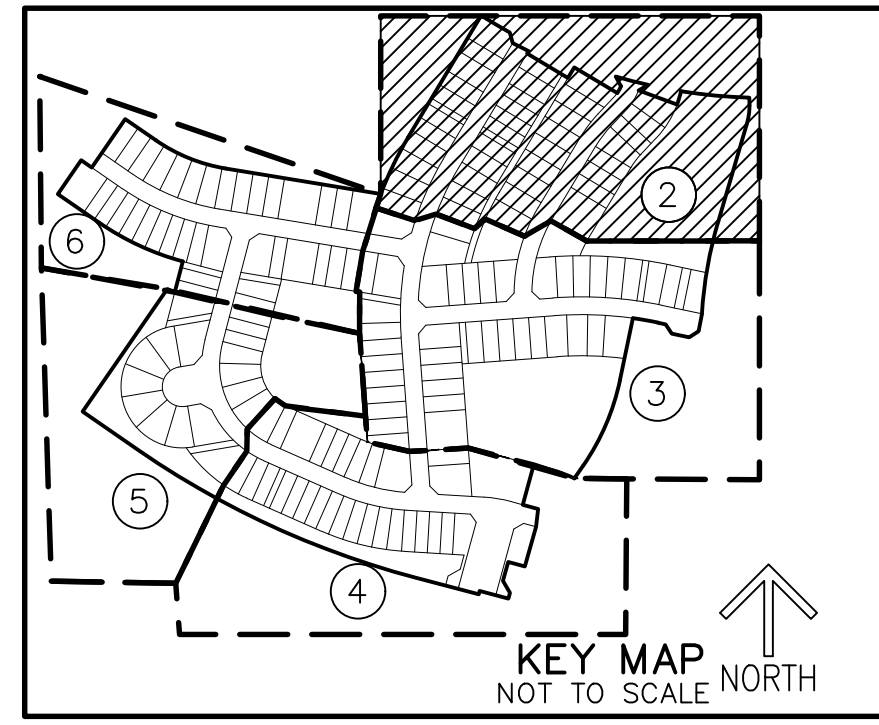
**CAULFIELD & WHEELER, INC.**  
 CIVIL ENGINEERING - LAND PLANNING  
 LANDSCAPE ARCHITECTURE - SURVEYING  
 7900 GLADES ROAD - SUITE 100  
 BOCA RATON, FLORIDA 33434  
 PHONE (561)-392-1991 / FAX (561)-750-1452

BOUNDARY SURVEY  
 A PORTION OF SECTION 12  
 TOWNSHIP 43 SOUTH, RANGE 40 EAST  
 TOWNSHIP 43 SOUTH, RANGE 41 EAST  
 CITY OF WESTLAKE, FLORIDA  
 PALM BEACH COUNTY, FLORIDA

DATE	2/24/20
DRAWN BY	dl
F.B./ PG.	ELEC
SCALE	AS SHOWN

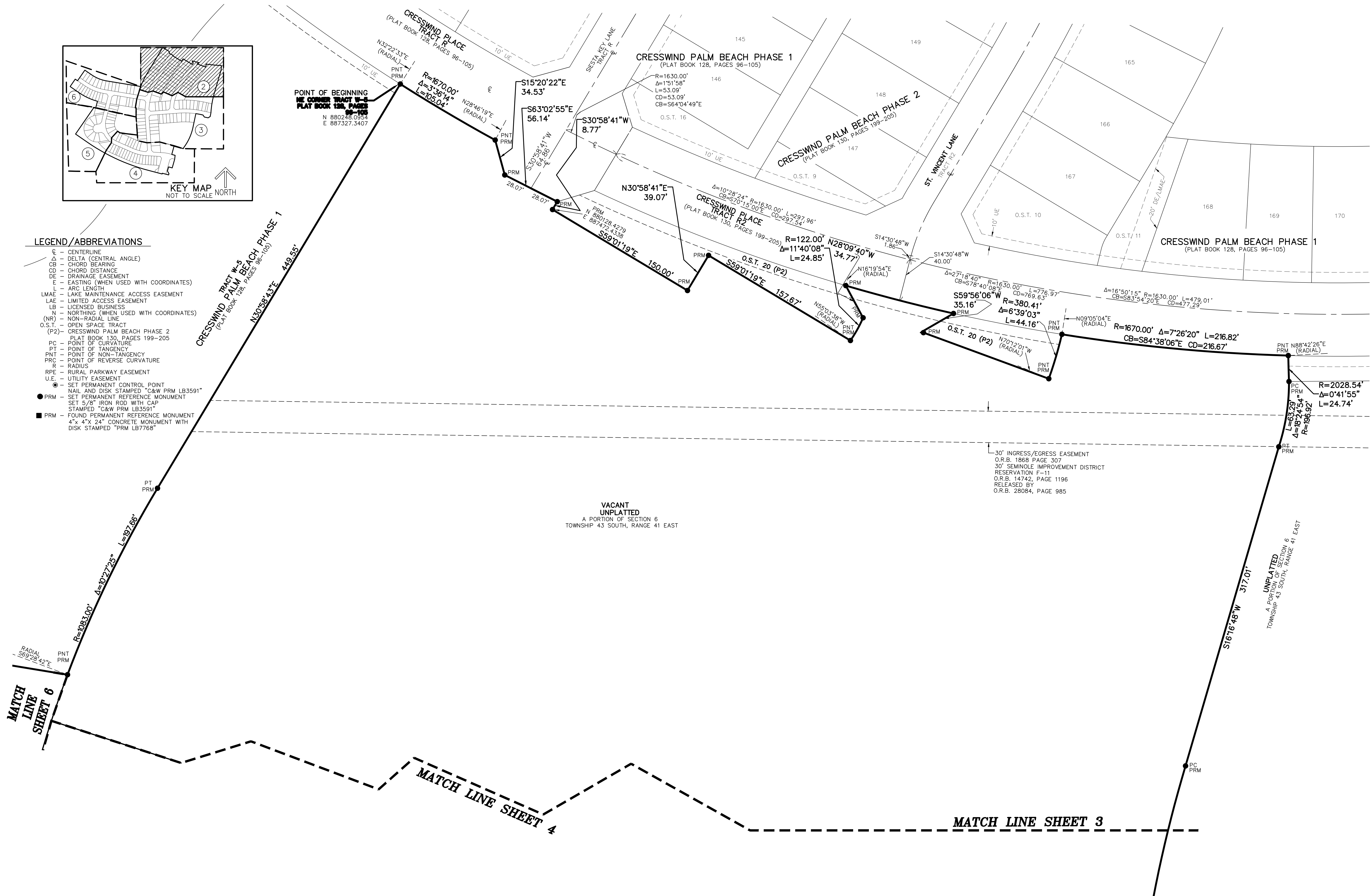
**David Lindley**  
 REGISTERED LAND SURVEYOR NO. 5005  
 STATE OF FLORIDA  
 L.B. 3591

JOB #	8272-2
SHT. NO.	1
OF 6 SHEETS	



**LEGEND / ABBREVIATIONS**

- CL - CENTERLINE
- ∠ - DELTA (CENTRAL ANGLE)
- CB - CHORD BEARING
- CD - CHORD DISTANCE
- DE - DRAINAGE EASEMENT
- E - EASTING (WHEN USED WITH COORDINATES)
- L - ARC LENGTH
- LMAE - LAKE MAINTENANCE ACCESS EASEMENT
- LAE - LIMITED ACCESS EASEMENT
- LB - LICENSED BUSINESS
- N - NORTHING (WHEN USED WITH COORDINATES)
- (NR) - NON-RADIAL LINE
- O.S.T. - OPEN SPACE TRACT
- (P2) - CRESSWIND PALM BEACH PHASE 2
- PC - POINT OF CURVATURE
- PT - POINT OF TANGENCY
- PNT - POINT OF NON-TANGENCY
- PRC - POINT OF REVERSE CURVATURE
- R - RADIUS
- RPE - RURAL PARKWAY EASEMENT
- U.E. - UTILITY EASEMENT
- - SET PERMANENT CONTROL POINT NAIL AND DISK STAMPED "C&W PRM LB3591"
- - SET PERMANENT REFERENCE MONUMENT SET 5/8" IRON ROD WITH CAP STAMPED "C&W PRM LB3591"
- - FOUND PERMANENT REFERENCE MONUMENT 4" x 4" x 24" CONCRETE MONUMENT WITH DISK STAMPED "PRM LB7768"



REVISIONS	DATE	BY

**CAULFIELD & WHEELER, INC.**  
 CIVIL ENGINEERING - LAND PLANNING  
 LANDSCAPE ARCHITECTURE - SURVEYING  
 7900 GLADES ROAD - SUITE 100  
 BOCA RATON, FLORIDA 33434  
 PHONE (561)-992-1991 / FAX (561)-750-1452

**BOUNDARY SURVEY 12**  
 A PORTION OF SECTION 40 EAST  
 TOWNSHIP 43 SOUTH, RANGE 41 EAST  
 AND SECTIONS 6 AND 7  
 TOWNSHIP 43 SOUTH, RANGE 41 EAST  
 CITY OF WESTLAKE  
 PALM BEACH COUNTY, FLORIDA

DATE 2/24/20  
 DRAWN BY dl  
 F.B./PG. ELEC  
 SCALE AS SHOWN

REVISIONS	DATE	BY

CAULFIELD & WHEELER, INC.  
 CIVIL ENGINEERING - LAND PLANNING  
 LANDSCAPE ARCHITECTURE - SURVEYING  
 7900 GLADES ROAD - SUITE 100  
 BOCA RATON, FLORIDA 33434  
 PHONE (561)-392-1991 / FAX (561)-750-1452

BOUNDARY SURVEY 12  
 A PORTION OF SECTION 40 EAST  
 TOWNSHIP 43 SOUTH, RANGE 40 EAST  
 AND SECTIONS 6 AND 7  
 TOWNSHIP 43 SOUTH, RANGE 41 EAST  
 CITY OF WESTLAKE  
 PALM BEACH COUNTY, FLORIDA

DATE 2/24/20  
 DRAWN BY dl  
 F.B./ PG. ELEC  
 SCALE AS SHOWN

MATCH LINE SHEET 2

UNPLATTED  
 A PORTION OF SECTION 6  
 TOWNSHIP 43 SOUTH, RANGE 41 EAST

VACANT  
 UNPLATTED  
 A PORTION OF SECTION 6  
 TOWNSHIP 43 SOUTH, RANGE 41 EAST

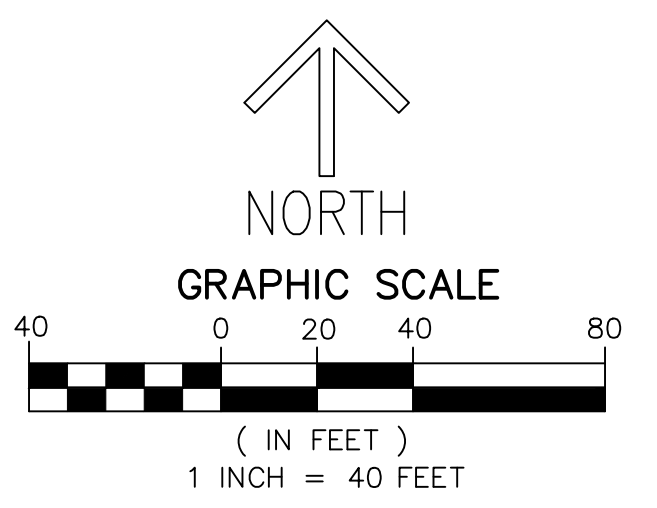
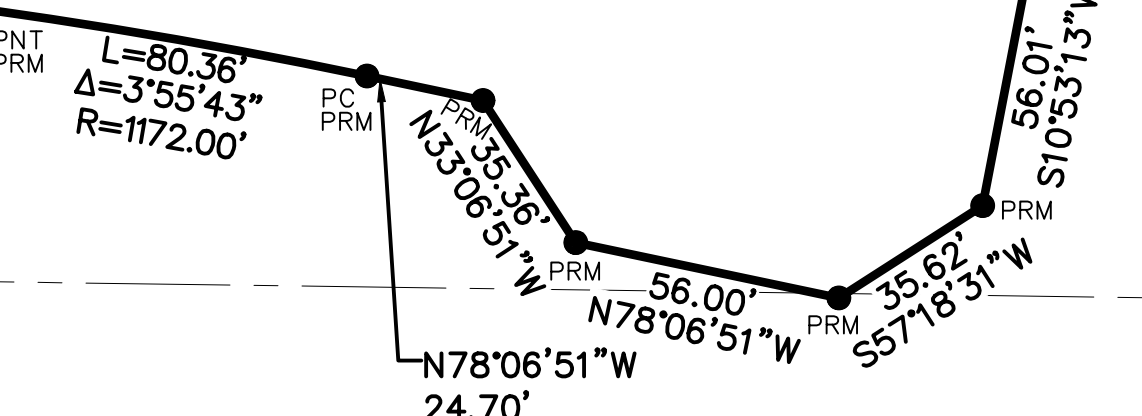
UNPLATTED  
 A PORTION OF SECTION 6  
 TOWNSHIP 43 SOUTH, RANGE 41 EAST

VACANT  
 UNPLATTED  
 A PORTION OF SECTION 7  
 TOWNSHIP 43 SOUTH, RANGE 41 EAST

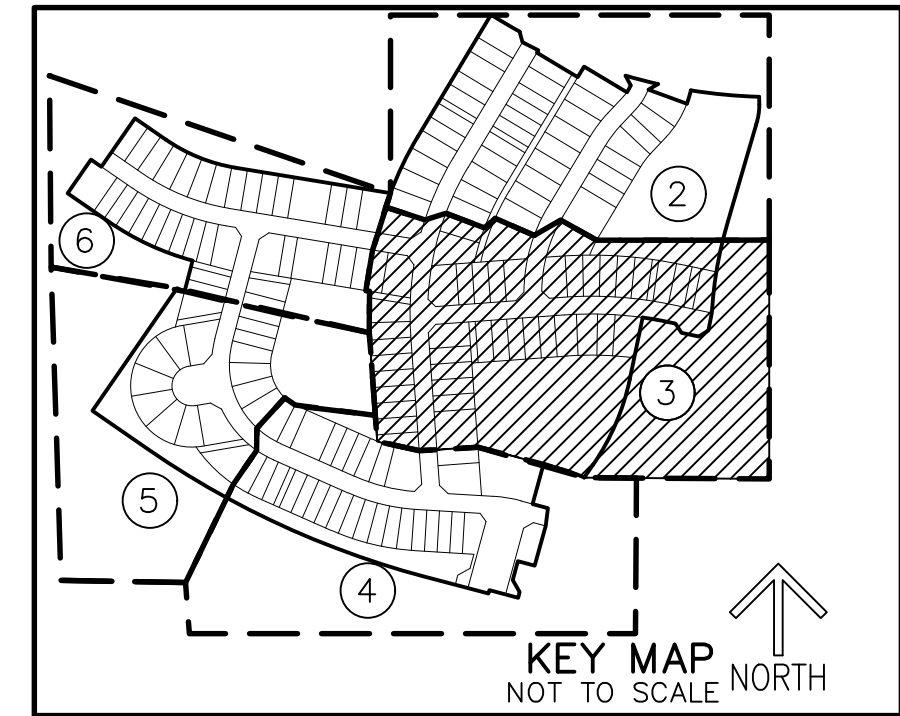
UNPLATTED  
 A PORTION OF SECTION 7  
 TOWNSHIP 43 SOUTH, RANGE 41 EAST

S. LINE OF SECTION 6, TOWNSHIP 43 SOUTH, RANGE 41 EAST  
 N. LINE OF SECTION 7, TOWNSHIP 43 SOUTH, RANGE 41 EAST

S. LINE OF SECTION 6, TOWNSHIP 43 SOUTH, RANGE 41 EAST  
 N. LINE OF SECTION 7, TOWNSHIP 43 SOUTH, RANGE 41 EAST

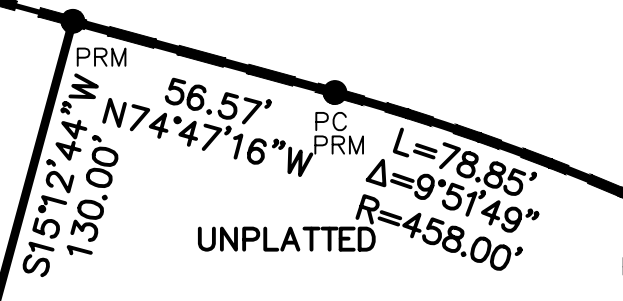


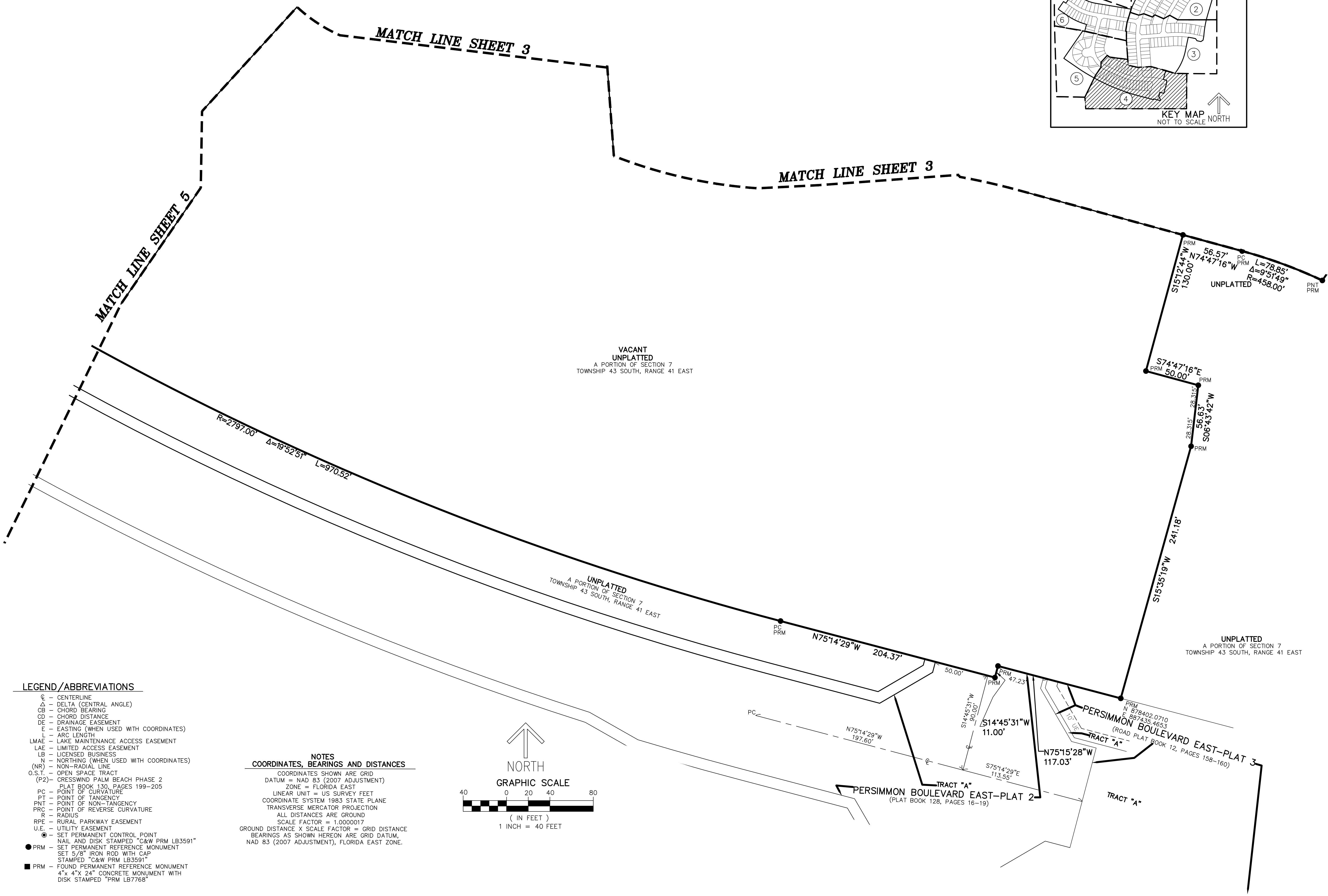
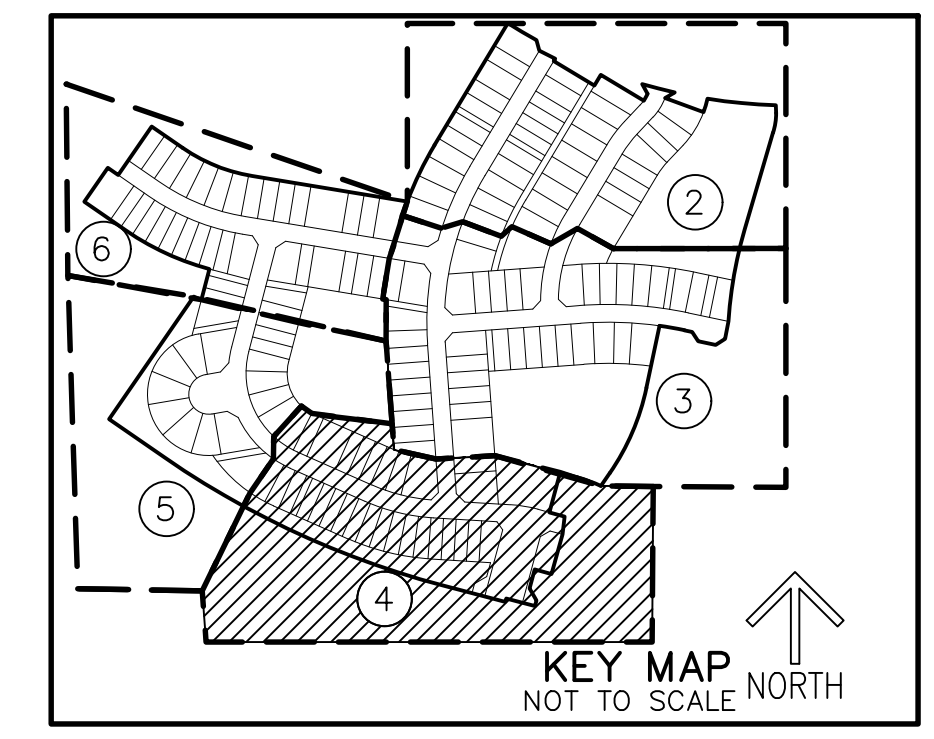
- LEGEND/ABBREVIATIONS**
- ⊙ - CENTERLINE
  - Δ - DELTA (CENTRAL ANGLE)
  - CB - CHORD BEARING
  - CD - CHORD DISTANCE
  - DE - DRAINAGE EASEMENT
  - E - EASTING (WHEN USED WITH COORDINATES)
  - L - ARC LENGTH
  - LMAE - LAKE MAINTENANCE ACCESS EASEMENT
  - LAE - LIMITED ACCESS EASEMENT
  - LB - LICENSED BUSINESS
  - N - NORTHING (WHEN USED WITH COORDINATES)
  - (NR) - NON-RADIAL LINE
  - O.S.T. - OPEN SPACE TRACT
  - (P2) - CRESSWIND PALM BEACH PHASE 2
  - PLAT BOOK 130, PAGES 199-205
  - PC - POINT OF CURVATURE
  - PT - POINT OF TANGENCY
  - PNT - POINT OF NON-TANGENCY
  - PRC - POINT OF REVERSE CURVATURE
  - R - RADIUS
  - RPE - RURAL PARKWAY EASEMENT
  - U.E. - UTILITY EASEMENT
  - - SET PERMANENT CONTROL POINT
  - - NAIL AND DISK STAMPED "C&W PRM LB3591"
  - - SET PERMANENT REFERENCE MONUMENT
  - SET 5/8" IRON ROD WITH CAP
  - STAMPED "C&W PRM LB3591"
  - - FOUND PERMANENT REFERENCE MONUMENT
  - 4" x 4" x 24" CONCRETE MONUMENT WITH DISK STAMPED "PRM LB7768"



**NOTES**  
**COORDINATES, BEARINGS AND DISTANCES**  
 COORDINATES SHOWN ARE GRID  
 DATUM = NAD 83 (2007 ADJUSTMENT)  
 ZONE = FLORIDA EAST  
 LINEAR UNIT = US SURVEY FEET  
 COORDINATE SYSTEM 1983 STATE PLANE  
 TRANSVERSE MERCATOR PROJECTION  
 ALL DISTANCES ARE GROUND  
 SCALE FACTOR = 1.0000017  
 GROUND DISTANCE X SCALE FACTOR = GRID DISTANCE  
 BEARINGS AS SHOWN HEREON ARE GRID DATUM,  
 NAD 83 (2007 ADJUSTMENT), FLORIDA EAST ZONE.

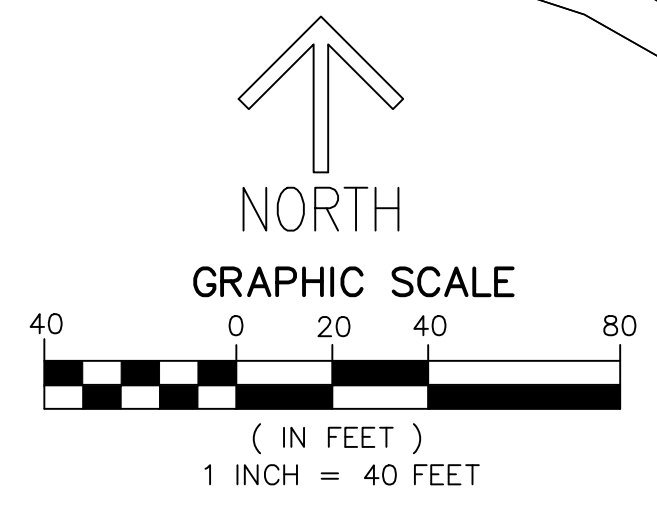
MATCH LINE SHEET 4





- LEGEND/ABBREVIATIONS**
- CL - CENTERLINE
  - Δ - DELTA (CENTRAL ANGLE)
  - CB - CHORD BEARING
  - CD - CHORD DISTANCE
  - DE - DRAINAGE EASEMENT
  - E - EASTING (WHEN USED WITH COORDINATES)
  - L - ARC LENGTH
  - LMAE - LAKE MAINTENANCE ACCESS EASEMENT
  - LAE - LIMITED ACCESS EASEMENT
  - LB - LICENSED BUSINESS
  - N - NORTHING (WHEN USED WITH COORDINATES)
  - (NR) - NON-RADIAL LINE
  - O.S.T. - OPEN SPACE TRACT
  - (P2) - CRESSWIND PALM BEACH PHASE 2
  - PC - POINT OF CURVATURE
  - PT - POINT OF TANGENCY
  - PNT - POINT OF NON-TANGENCY
  - PRC - POINT OF REVERSE CURVATURE
  - R - RADIUS
  - RPE - RURAL PARKWAY EASEMENT
  - U.E. - UTILITY EASEMENT
  - - SET PERMANENT CONTROL POINT  
NAIL AND DISK STAMPED "C&W PRM LB3591"
  - - SET PERMANENT REFERENCE MONUMENT  
SET 5/8" IRON ROD WITH CAP  
STAMPED "C&W PRM LB3591"
  - - FOUND PERMANENT REFERENCE MONUMENT  
4" X 4" X 24" CONCRETE MONUMENT WITH  
DISK STAMPED "PRM LB7768"

**NOTES**  
**COORDINATES, BEARINGS AND DISTANCES**  
 COORDINATES SHOWN ARE GRID  
 DATUM = NAD 83 (2007 ADJUSTMENT)  
 ZONE = FLORIDA EAST  
 LINEAR UNIT = US SURVEY FEET  
 COORDINATE SYSTEM 1983 STATE PLANE  
 TRANSVERSE MERCATOR PROJECTION  
 ALL DISTANCES ARE GROUND  
 SCALE FACTOR = 1.0000017  
 GROUND DISTANCE X SCALE FACTOR = GRID DISTANCE  
 BEARINGS AS SHOWN HEREON ARE GRID DATUM,  
 NAD 83 (2007 ADJUSTMENT), FLORIDA EAST ZONE.

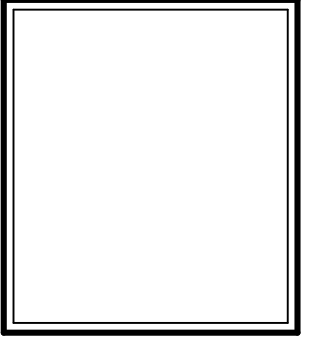


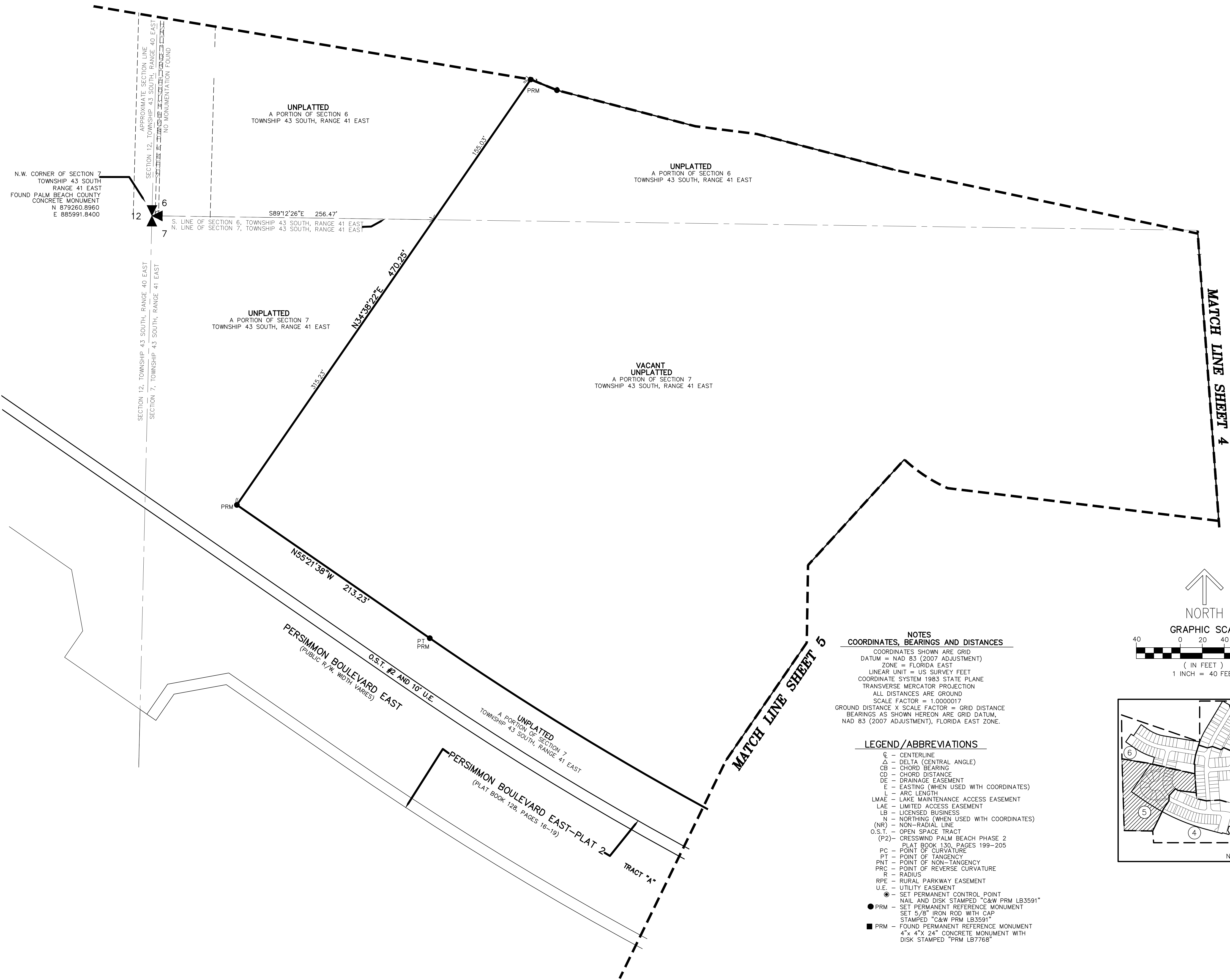
REVISIONS	DATE	BY

**CAULFIELD & WHEELER, INC.**  
 CIVIL ENGINEERING - LAND PLANNING  
 LANDSCAPE ARCHITECTURE - SURVEYING  
 7900 GLADES ROAD - SUITE 100  
 BOCA RATON, FLORIDA 33434  
 PHONE (561)-392-1991 / FAX (561)-750-1452

**BOUNDARY SURVEY 12**  
 A PORTION OF SECTION 12  
 TOWNSHIP 43 SOUTH, RANGE 40 EAST  
 AND SECTIONS 6 AND 7  
 TOWNSHIP 43 SOUTH, RANGE 41 EAST  
 CITY OF WESTLAKE  
 PALM BEACH COUNTY, FLORIDA

DATE 2/24/20  
 DRAWN BY dl  
 F.B./ PG. ELEC  
 SCALE AS SHOWN

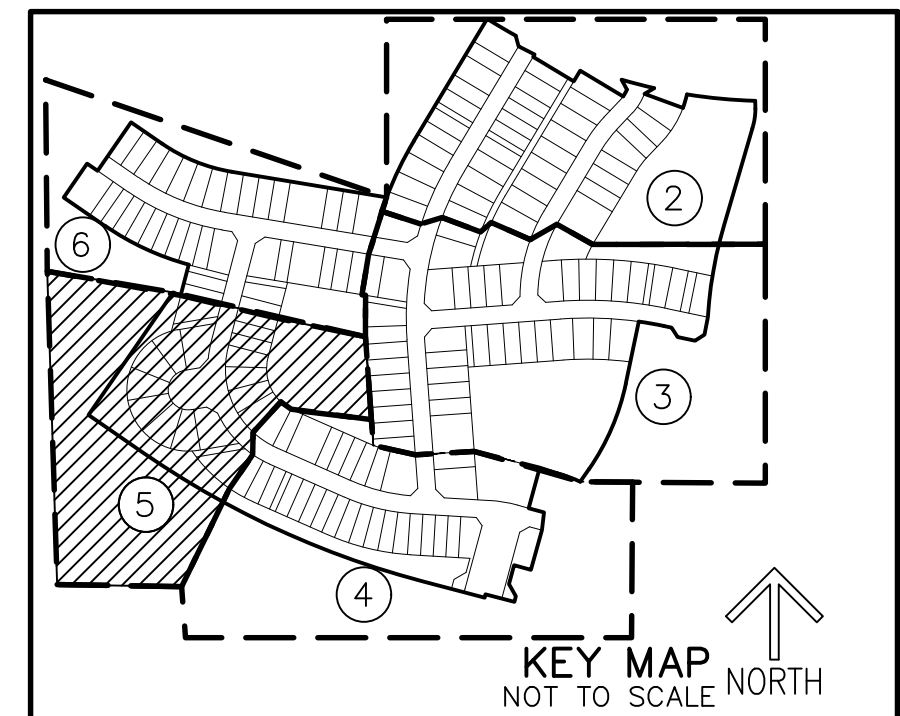
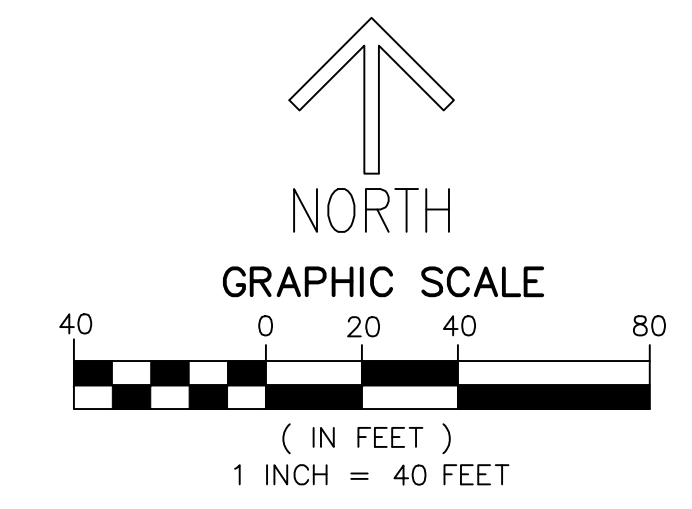




**NOTES**  
**COORDINATES, BEARINGS AND DISTANCES**

COORDINATES SHOWN ARE GRID  
DATUM = NAD 83 (2007 ADJUSTMENT)  
ZONE = FLORIDA EAST  
LINEAR UNIT = US SURVEY FEET  
COORDINATE SYSTEM 1983 STATE PLANE  
TRANSVERSE MERCATOR PROJECTION  
ALL DISTANCES ARE GROUND  
SCALE FACTOR = 1.0000017  
GROUND DISTANCE X SCALE FACTOR = GRID DISTANCE  
BEARINGS AS SHOWN HEREON ARE GRID DATUM,  
NAD 83 (2007 ADJUSTMENT), FLORIDA EAST ZONE.

- LEGEND/ABBREVIATIONS**
- CL - CENTERLINE
  - Δ - DELTA (CENTRAL ANGLE)
  - CB - CHORD BEARING
  - CD - CHORD DISTANCE
  - DE - DRAINAGE EASEMENT
  - E - EASTING (WHEN USED WITH COORDINATES)
  - L - ARC LENGTH
  - LM&E - LAKE MAINTENANCE ACCESS EASEMENT
  - LAE - LIMITED ACCESS EASEMENT
  - LB - LICENSED BUSINESS
  - N - NORTHING (WHEN USED WITH COORDINATES)
  - (NR) - NON-RADIAL LINE
  - O.S.T. - OPEN SPACE TRACT
  - (P2) - CRESSWIND PALM BEACH PHASE 2  
PLAT BOOK 130, PAGES 199-205
  - PC - POINT OF CURVATURE
  - PT - POINT OF TANGENCY
  - PNT - POINT OF NON-TANGENCY
  - PRC - POINT OF REVERSE CURVATURE
  - R - RADIUS
  - RPE - RURAL PARKWAY EASEMENT
  - U.E. - UTILITY EASEMENT
  - - SET PERMANENT CONTROL POINT  
NAIL AND DISK STAMPED "C&W PRM LB3591"
  - - SET PERMANENT REFERENCE MONUMENT  
SET 5/8" IRON ROD WITH CAP  
STAMPED "C&W PRM LB3591"
  - - FOUND PERMANENT REFERENCE MONUMENT  
4" x 4" x 24" CONCRETE MONUMENT WITH  
DISK STAMPED "PRM LB7768"



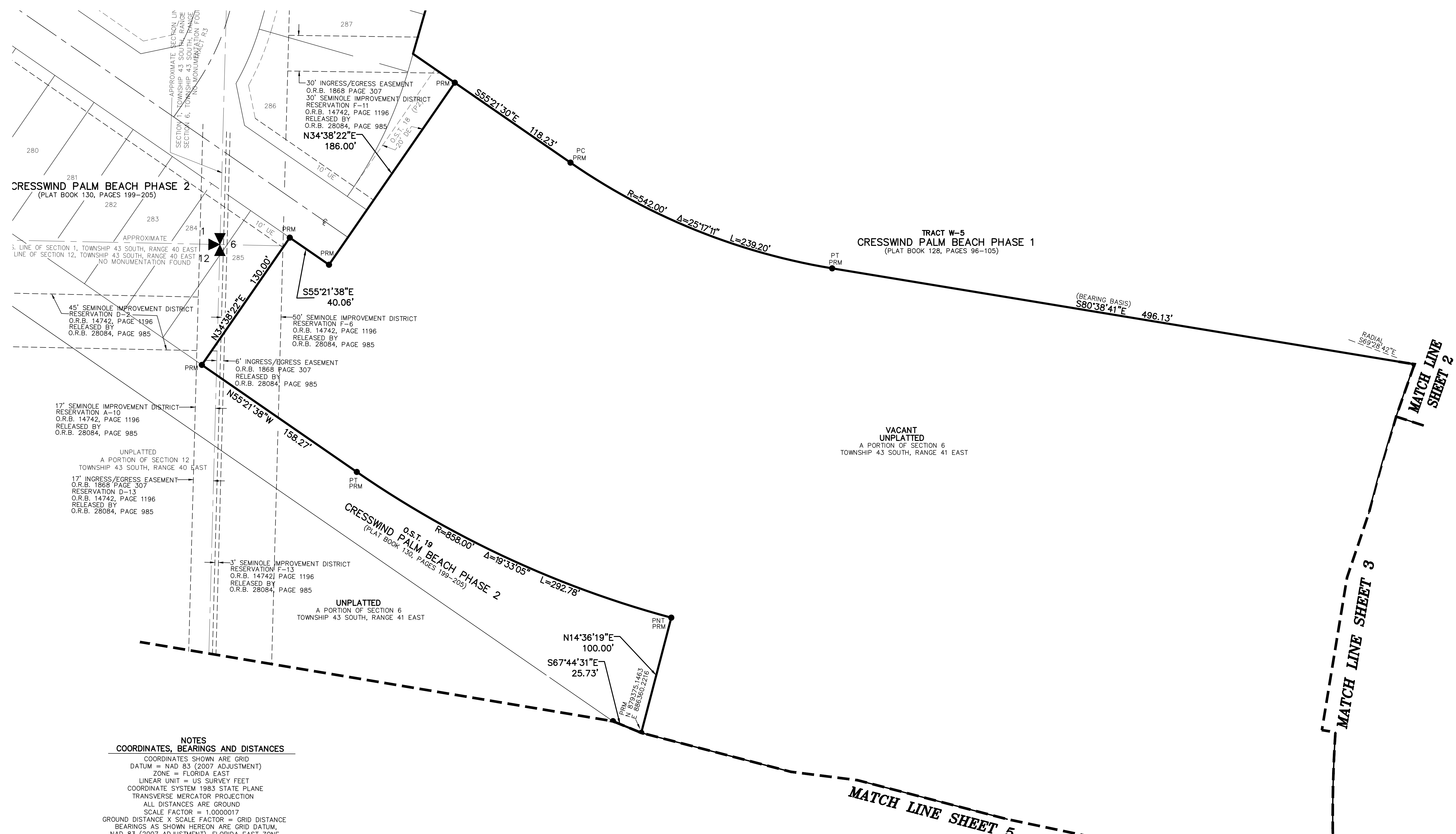
NO.	DATE	BY

REVISIONS  
FILE NAME: 8272-1-PHASE3\_SURVEY-1

**CAULFIELD & WHEELER, INC.**  
CIVIL ENGINEERING - LAND PLANNING  
LANDSCAPE ARCHITECTURE - SURVEYING  
7900 GLADES ROAD - SUITE 100  
BOCA RATON, FLORIDA 33434  
PHONE (561)-992-1991 / FAX (561)-750-1452

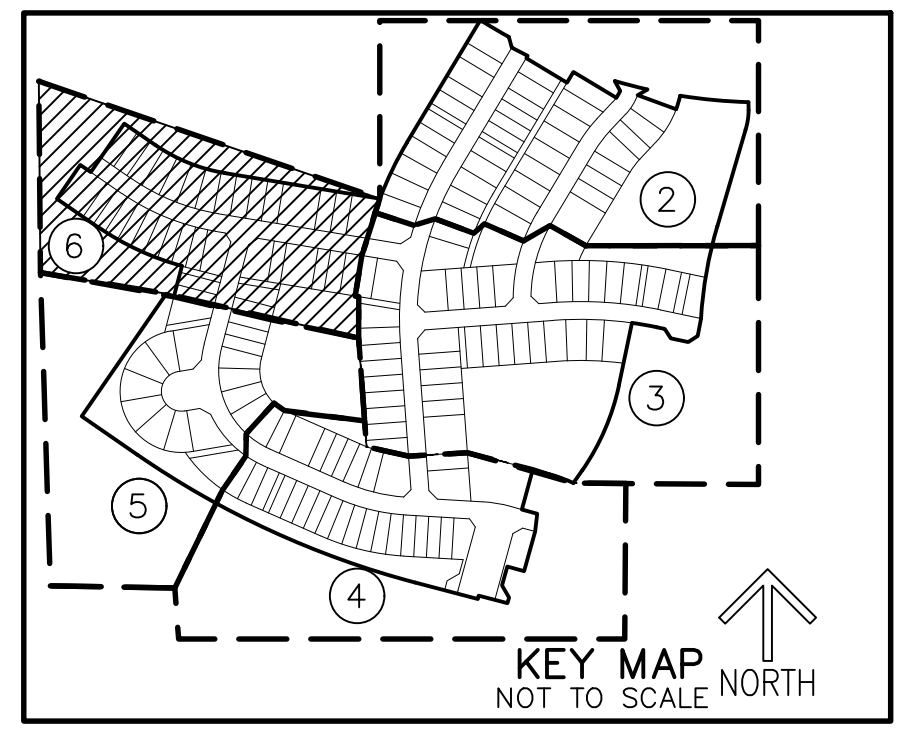
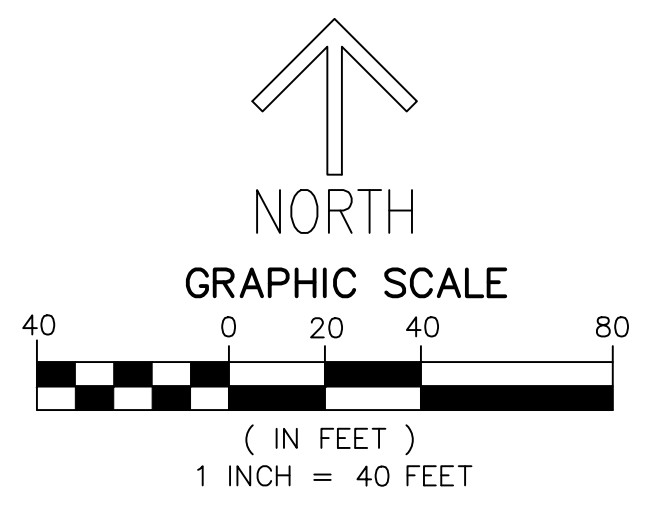
**BOUNDARY SURVEY 12**  
**A PORTION OF SECTION 40 EAST**  
**TOWNSHIP 43 SOUTH, RANGE 40 EAST**  
**AND SECTIONS 6 AND 7**  
**TOWNSHIP 43 SOUTH, RANGE 41 EAST**  
**CITY OF WESTLAKE**  
**PALM BEACH COUNTY, FLORIDA**

DATE 2/24/20  
DRAWN BY dl  
F.B./ PG. ELEC  
SCALE AS SHOWN



**NOTES**  
**COORDINATES, BEARINGS AND DISTANCES**  
 COORDINATES SHOWN ARE GRID  
 DATUM = NAD 83 (2007 ADJUSTMENT)  
 ZONE = FLORIDA EAST  
 LINEAR UNIT = US SURVEY FEET  
 COORDINATE SYSTEM 1983 STATE PLANE  
 TRANSVERSE MERCATOR PROJECTION  
 ALL DISTANCES ARE GROUND  
 SCALE FACTOR = 1.0000017  
 GROUND DISTANCE X SCALE FACTOR = GRID DISTANCE  
 BEARINGS AS SHOWN HEREON ARE GRID DATUM,  
 NAD 83 (2007 ADJUSTMENT), FLORIDA EAST ZONE.

- LEGEND / ABBREVIATIONS**
- ⊙ - CENTERLINE
  - Δ - DELTA (CENTRAL ANGLE)
  - CB - CHORD BEARING
  - CD - CHORD DISTANCE
  - DE - DRAINAGE EASEMENT
  - L - ARC LENGTH
  - LMAE - LAKE MAINTENANCE ACCESS EASEMENT
  - LAE - LIMITED ACCESS EASEMENT
  - LB - LICENSED BUSINESS
  - N - NOTHING (WHEN USED WITH COORDINATES)
  - (NR) - NON-RADIAL LINE
  - O.S.T. - OPEN SPACE TRACT
  - (P2) - CRESSWIND PALM BEACH PHASE 2
  - PLB - PLAT BOOK 130, PAGES 199-205
  - PC - POINT OF CURVATURE
  - PT - POINT OF TANGENCY
  - PNT - POINT OF NON-TANGENCY
  - PRC - POINT OF REVERSE CURVATURE
  - R - RADIUS
  - RPE - RURAL PARKWAY EASEMENT
  - U.E. - UTILITY EASEMENT
  - ⊙ - SET PERMANENT CONTROL POINT  
 NAIL AND DISK STAMPED "O&W PRM LB3591"
  - - SET PERMANENT REFERENCE MONUMENT  
 SET 5/8" IRON ROD WITH CAP  
 STAMPED "C&W PRM LB3591"
  - - FOUND PERMANENT REFERENCE MONUMENT  
 4" 4" 24" CONCRETE MONUMENT WITH  
 DISK STAMPED "PRM LB7768"

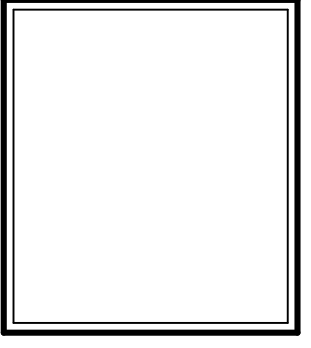


REVISIONS	DATE	BY

**CAULFIELD & WHEELER, INC.**  
 CIVIL ENGINEERING - LAND PLANNING  
 LANDSCAPE ARCHITECTURE - SURVEYING  
 7900 GLADES ROAD - SUITE 100  
 BOCA RATON, FLORIDA 33434  
 PHONE (561)-992-1991 / FAX (561)-750-1452

**BOUNDARY SURVEY**  
 A PORTION OF SECTION 12  
 TOWNSHIP 43 SOUTH, RANGE 40 EAST  
 AND SECTIONS 6 AND 7  
 TOWNSHIP 43 SOUTH, RANGE 41 EAST  
 CITY OF WESTLAKE  
 PALM BEACH COUNTY, FLORIDA

DATE 2/24/20  
 DRAWN BY dl  
 F.B. / PG. ELEC  
 SCALE AS SHOWN



JOB # 8272-1  
 SHT. NO.  
**6**  
 OF 6 SHEETS