

Proposed Branding for Master Sign Plan



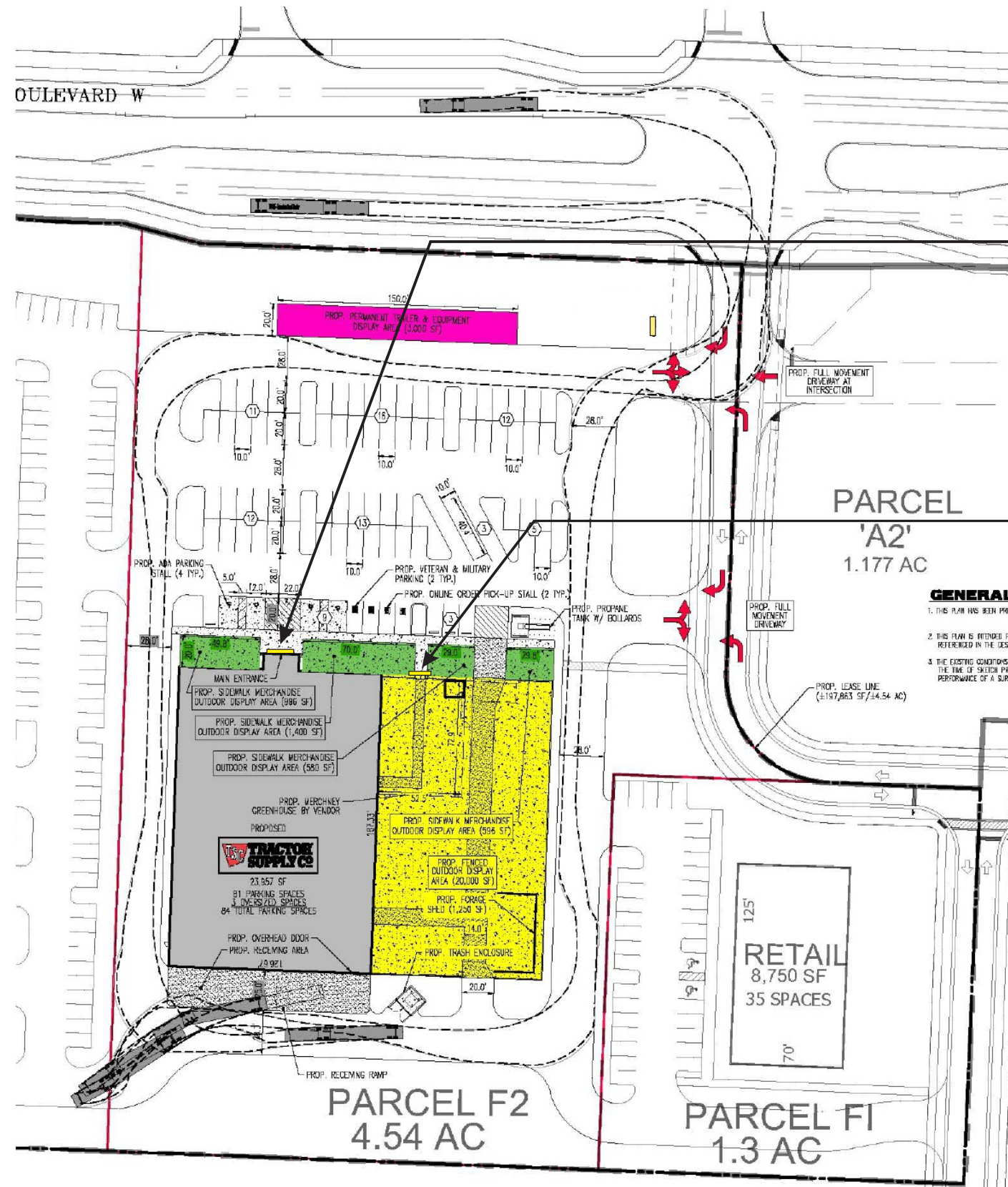
16830 Persimmon Boulevard,
Westlake, FL 33470

Presented By:



The Sign Resource
407 N. Pilot Knob Rd. Denver, NC. 28037
Ph. 727-669-6877 www.TSRFL.com

Exhibit "A"-



SIGN TYPE 1 or 1.A

Proposed Wall Sign
84.7 Sq. Feet

Garden
Center

SIGN TYPE 2

Proposed Wall Sign
79.98 Sq. Feet

GENERAL

1. THIS PLAN HAS BEEN PREPARED FOR THE PURPOSES OF THE DESIGN.
2. THIS PLAN IS INTENDED FOR REFERENCE IN THE DESIGN.
3. THE EXISTING CONDITIONS SHOWN ON THE SITE SURVEY SHALL BE THE BASIS FOR THE DESIGN.

Site Plan

Client:



Location:

16830 Persimmon Boulevard,
Westlake, FL 33470

Project:

Site Plan

Notes:

Dwg. Date:
9-26-24

Scale:
NTS.

Revisions: Date:

Presented By:



The Sign Resource
407 N. Pilot Knob Rd. Denver, NC 28037
Ph. 727-669-6877 www.TSRFL.com

Note: This drawing is property of
The Sign Resource, & shall not be
reproduced without written permission

Dwg. Number: TS-Site

Proposed Branding for Master Sign Plan



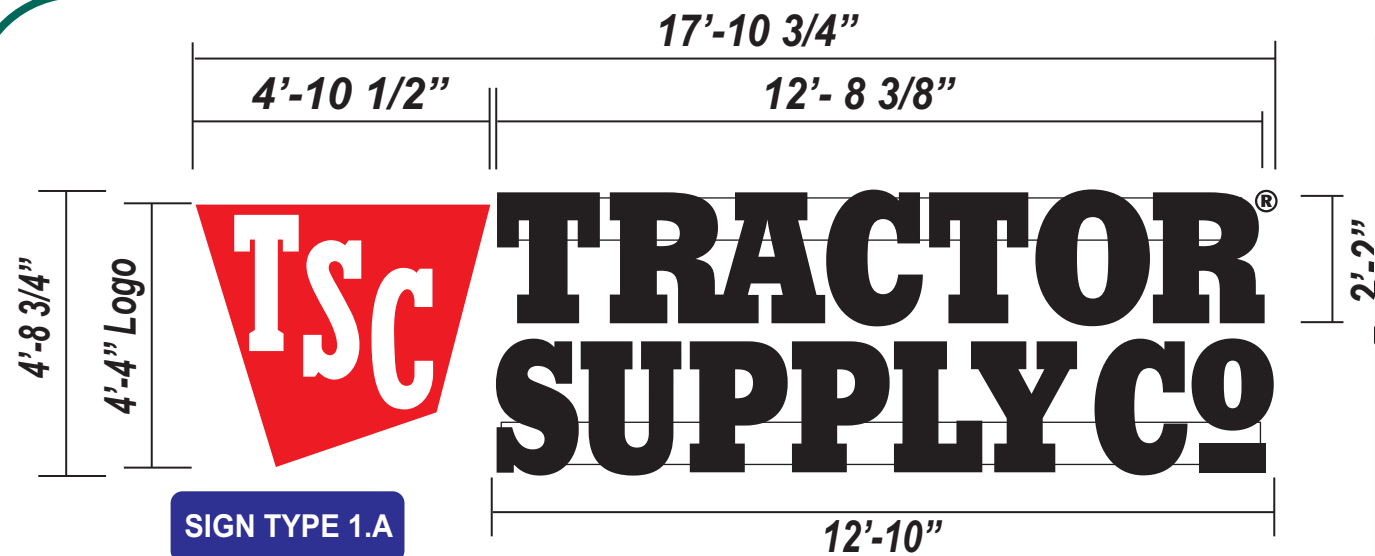
16830 Persimmon Boulevard,
Westlake, FL 33470

Presented By:



The Sign Resource

407 N. Pilot Knob Rd. Denver, NC. 28037
Ph. 727-669-6877 www.TSRFL.com



Proposed Raceway Mounted Channel Letters & Logo Letters

Scale: 3/8"=1'-0" 84.7 Sq. Feet

Sign type A.1

General Notes: Tractor Supply

Illuminated Channel Letters:

Letter construction... 5" deep.

Backs - .063" Aluminum

Returns - .040" Aluminum

Faces for Letters - .187" flat Acrylic

Trimcap 1" Std. Type

Illumination - Internal Principal White LEDs.

Letters are raceway mounted; top

mount for Tractor, bottom for Supply Co.

Logo

Channel letters mounted to backing panel.

Logo construction... 3MM ACM backing panel.

TSC Channel Letters mounted to panel.

Returns - .040" Aluminum

Faces for Letters - .187" flat Acrylic.

Trimcap 1" Std. Type.

40'-0"

4'

Colors: Tractor Supply Letters

Tractor Supply letter returns are Gloss Black

Faces for Letters - .187" flat #7328

White Acrylic with Black-

Film Series 3635-222 on front side.

Black in Day / White at Night.

Trimcap 1" Std. Type, color Black.

Colors: Logo

Logo returns - Gloss White.

Logo returns - Gloss White.

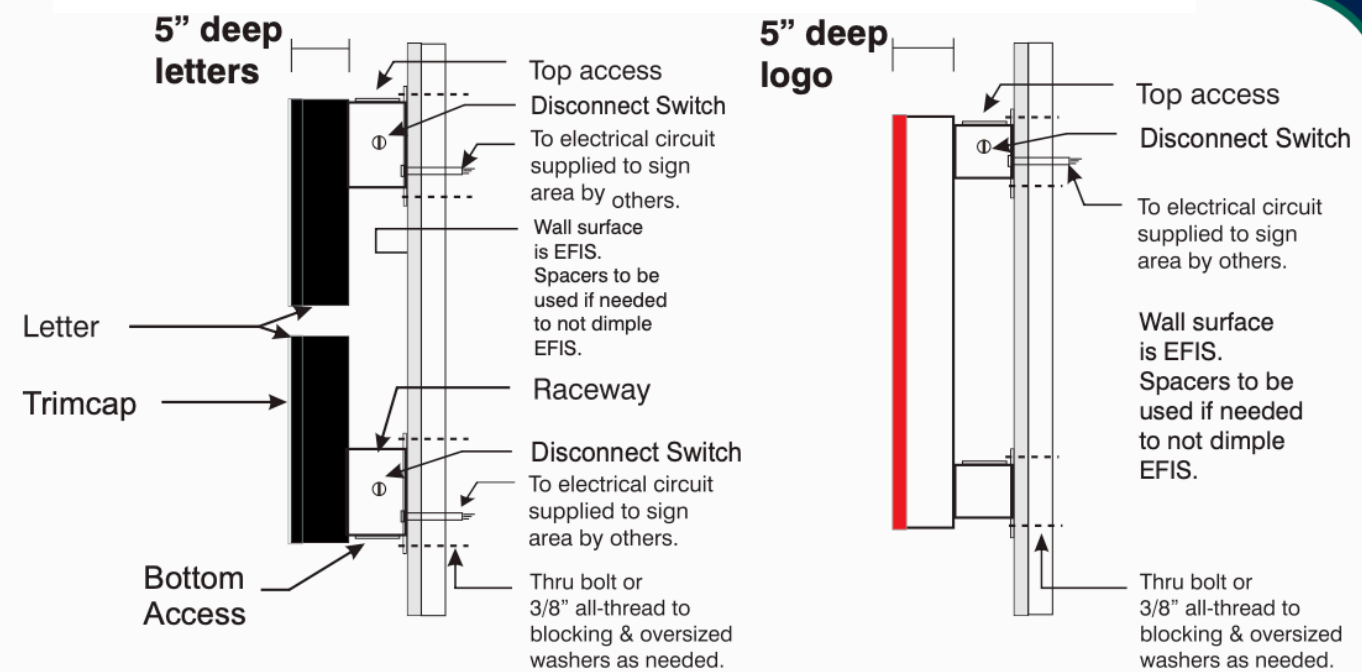
Logo face - White with Red vinyl ap

...Oracal 8500 Series- #031 or 3M E

Trimcap 1" Std. Type, color Red.

Note: Raceway color to be determ

to match building.



Proposed Channel Letters

Proposed Channel Logo

OPTION # 1 Deviation Table

Sign Type	Code Requirement	Applicant Request	Deviation
Wall Sign for Principal Structure or Building Identification or Principal Tenant [See illustration below]	Sec. 113-46. - Other prohibited signs. In addition to the prohibited signs listed herein above, the following signs are also prohibited in the city: (22) BOX SIGNS (23). CABINET SIGNS Sign letters shall not exceed 36 inches in height including lowercase letters	Cabinet/Box Logo 4'-4" Logo cabinet/Box	Cabinet/Logo +16 SQFT

Electrical Specifications

Power supplies... Principal Multi-volt electronic type will be housed in raceway.

UL LISTED OUTDOOR RATED DISCONNECT SWITCHES REQUIRED

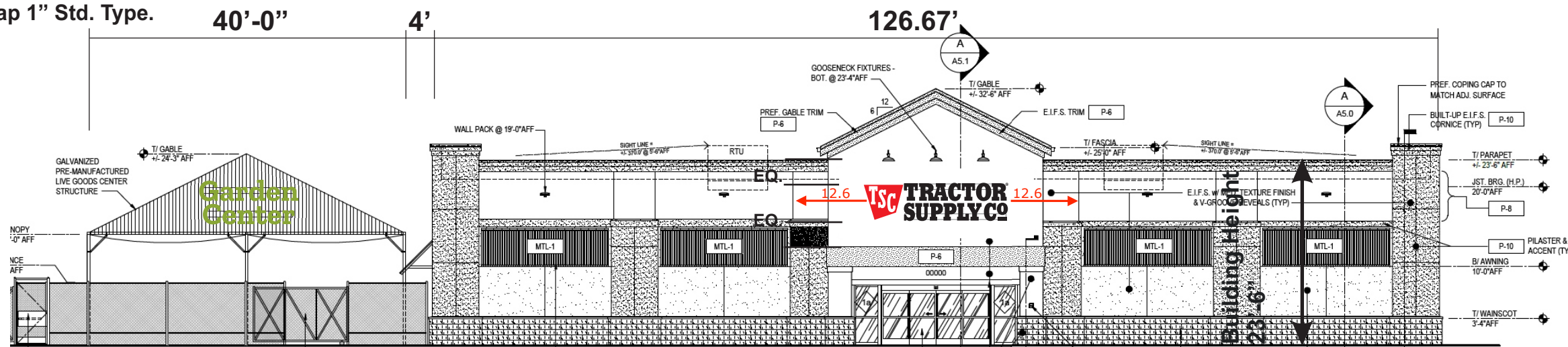
Electrical circuit will be provided to back of sign area within 6 feet... by others.

Access behind facade for electrical hook up will be required. Field survey needed.



Sign shall carry the UL Label

Sign shall meet current NEC Code



Storefront Elevation: with Proposed Wall Signs Scale 1/16"=1'-0"

Client:

TSC TRACTOR SUPPLY CO

Location:

16830 Persimmon Boulevard,
Westlake, FL 33470

Project:

Proposed Wall Signs

Notes:

Dwg. Date:

8-5-24

Scale:

NTS.

Revisions:

Date:

Presented By:



The Sign Resource

407 N. Pilot Knob Rd. Denver, NC. 28037
Ph. 727-669-6877 www.TSRFL.com

Note: This drawing is property of
The Sign Resource, & shall not be
reproduced without written permission

Dwg. Number: TS-10466



SIGN TYPE 1.A

Proposed Raceway Mounted Channel Letters & Logo Letters
Scale: 3/8"=1'-0" 84.7 Sq. Feet

Sign type A.1
General Notes: Tractor Supply
Illuminated Channel Letters:
Letter construction... 5" deep.
Backs - .063" Aluminum
Returns - .040" Aluminum
Faces for Letters - .187" flat Acrylic
Trimcap 1" Std. Type
Illumination - Internal Principal White LEDs.
Letters are raceway mounted; top
mount for Tractor, bottom for Supply Co.

Logo
Channel letters mounted to backing panel.
Logo construction... 3MM ACM backing panel.
TSC Channel Letters mounted to panel.
Returns - .040" Aluminum
Faces for Letters - .187" flat Acrylic.
Trimcap 1" Std. Type.

Colors: Tractor Supply Letters
Tractor Supply letter returns are Gloss Black.
Faces for Letters - .187" flat #7328
White Acrylic with Black-
Film Series 3635-222 on front side.
Black in Day / White at Night.
Trimcap 1" Std. Type, color Black.

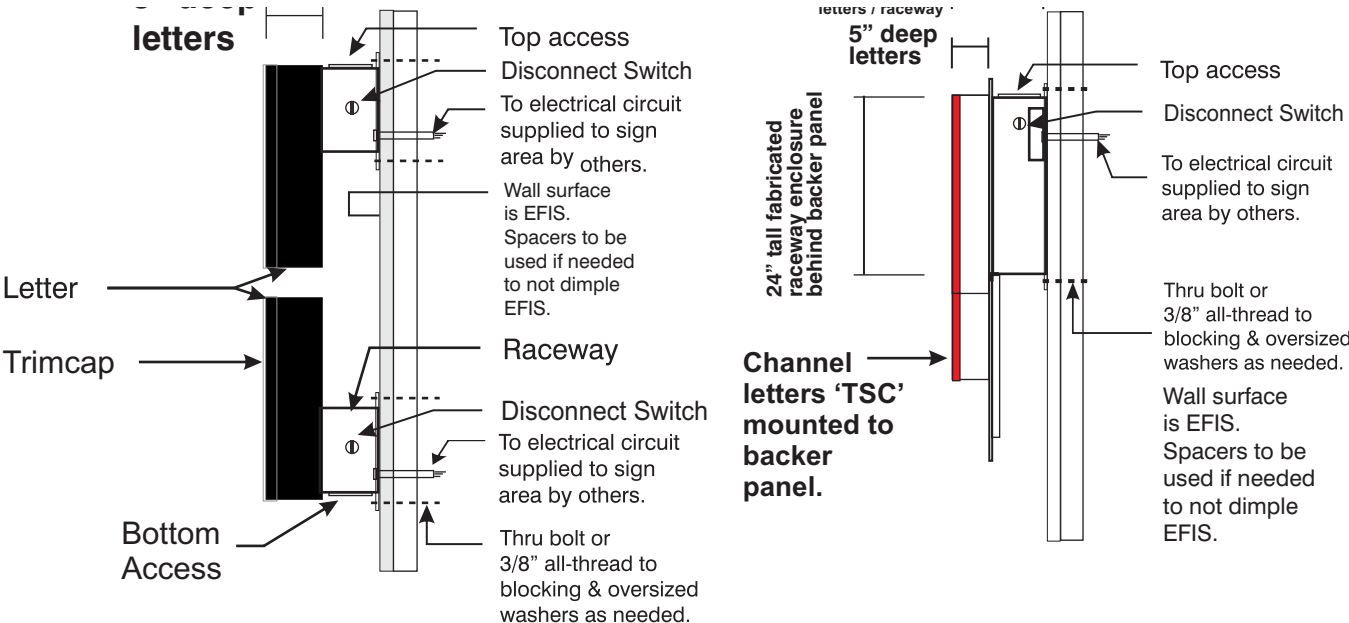
Colors: Logo
Logo returns - Gloss White.
Logo returns - Gloss White.
Logo face - White with Red vinyl ap
...Oracal 8500 Series- #031 or 3M E
Trimcap 1" Std. Type, color Red.

Note: Raceway color to be determ
to match building.

Electrical Specifications
Power supplies... Principal Multi-volt electronic
type will be housed in raceway.
UL LISTED OUTDOOR RATED DISCONNECT
SWITCHES REQUIRED
Electrical circuit will be provided
to back of sign area within 6 feet... by others.
Access behind facade
for electrical hook up will be required.
Field survey needed.



Sign shall carry the UL Label
Sign shall meet current NEC. Code

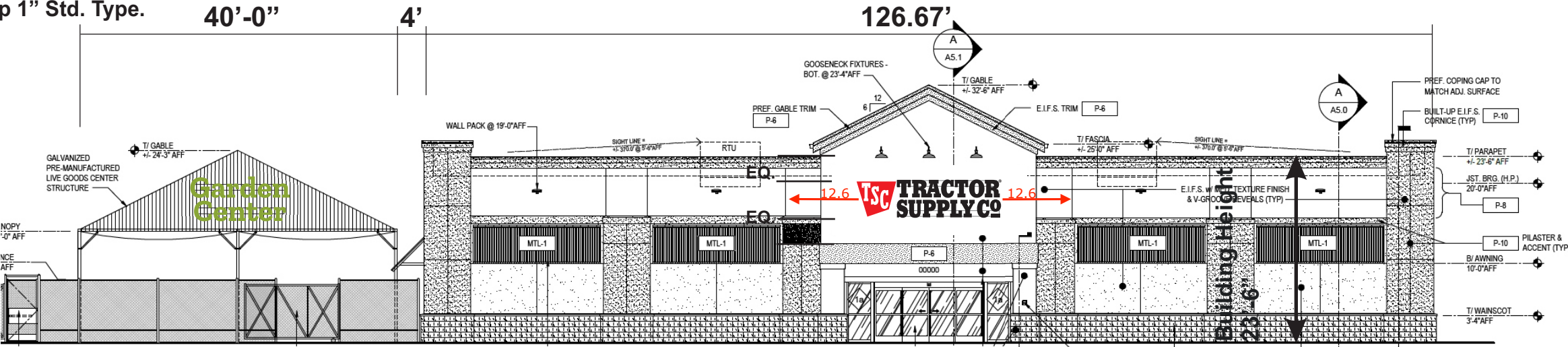


Proposed Channel Letters

**Proposed Channel Letters
On Backing Panel**

**OPTION # 2
Deviation Table**

Sign Type	Code Requirement	Applicant Request	Deviation
Wall Sign for Principal Structure or Building Identification or Principal Tenant [See illustration below]	Sec. 113-46. - Other prohibited signs. In addition to the prohibited signs listed herein above, the following signs are also prohibited in the city: (22) BOX SIGNS (23). CABINET SIGNS Sign letters shall not exceed 36 inches in height including lowercase letters	Cabinet/Box Logo 4'-4" Logo cabinet/Box	Cabinet/Logo +16 SQFT



Storefront Elevation: with Proposed Wall Signs Scale 1/16"=1'- 0"

Client:



Location:

16830 Persimmon Boulevard,
Westlake, FL 33470

Project:

Proposed Wall Signs

Notes:

Dwg. Date:
8-5-24

Scale:
NTS.

Revisions: Date:

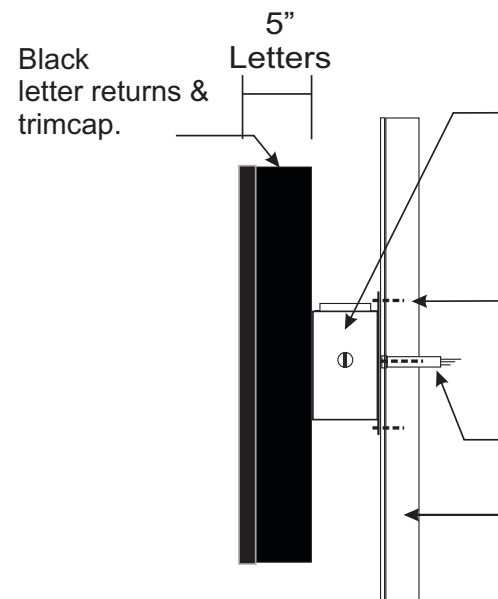
Presented By:



The Sign Resource
407 N. Pilot Knob Rd. Denver, NC. 28037
Ph. 727-669-6877 www.TSRFL.com

Note: This drawing is property of
The Sign Resource, & shall not be
reproduced without written permission

Dwg. Number: TS-10466



4.5" X 7.5"+-aluminum raceway fastened to outside of Poly-carb siding & thru to 2" x 2" steel gable framing as per local engineering

#12 Self tapping sheet metal screws as needed into 2" x 2" tubing.

Wiring to junction box & circuit.

2" x 2" steel tubing gable framing.

Raceways fasten to 2" x 2" x 1/8" Steel Truss tubing.

End View of Channel Letters:
typical for both lines of copy

Proposed Raceway Mounted Channel Letters

Scale: 3/8"=1'-0"

79.98 Sq. Ft.

General Notes:

Illuminated Channel Letters & Logo

Letter construction...

Backs - .063" Aluminum

Returns - .040" Aluminum

Faces for Letters - .177" flat

#7328 white Acrylic with printed vinyl

overlay...Pantone # 370 Green

Trimcap 1" black Std. Type

Illumination - Internal white Principal LEDs.

Raceway color to be provided.

Electrical Specifications

Power supplies... Principal Multi-volt electronic type will be housed in raceway.

UL LISTED OUTDOOR RATED DISCONNECT SWITCHES REQUIRED

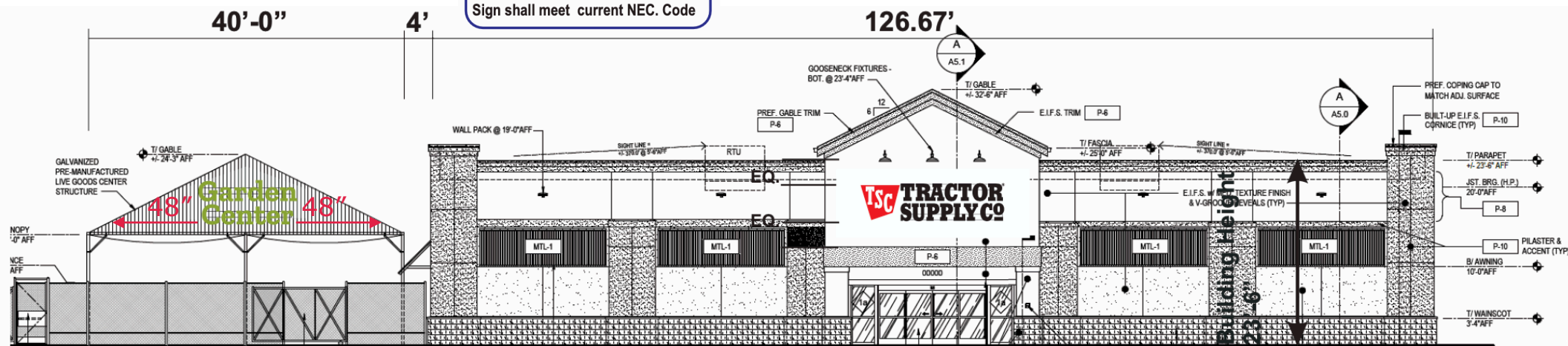
Electrical circuit will be provided to back of sign area within 6 feet... by others.

Access behind facade for electrical hook up will be required. Field survey needed.



Sign shall carry the UL Label

Sign shall meet current NEC Code



Storefront Elevation: with Proposed Wall Signs

Scale 1/16"=1'-0"

Client:

TSC TRACTOR SUPPLY CO

Location:

16830 Persimmon Boulevard,
Westlake, FL 33470

Project:

Proposed Wall Signs

Notes:

Dwg. Date:
8-5-24

Scale:
NTS.

Revisions: Date:

Presented By:



The Sign Resource

407 N. Pilot Knob Rd. Denver, NC. 28037
Ph. 727-669-6877 www.TSRFL.com

Note: This drawing is property of
The Sign Resource, & shall not be
reproduced without written permission

Dwg. Number: TS-10153