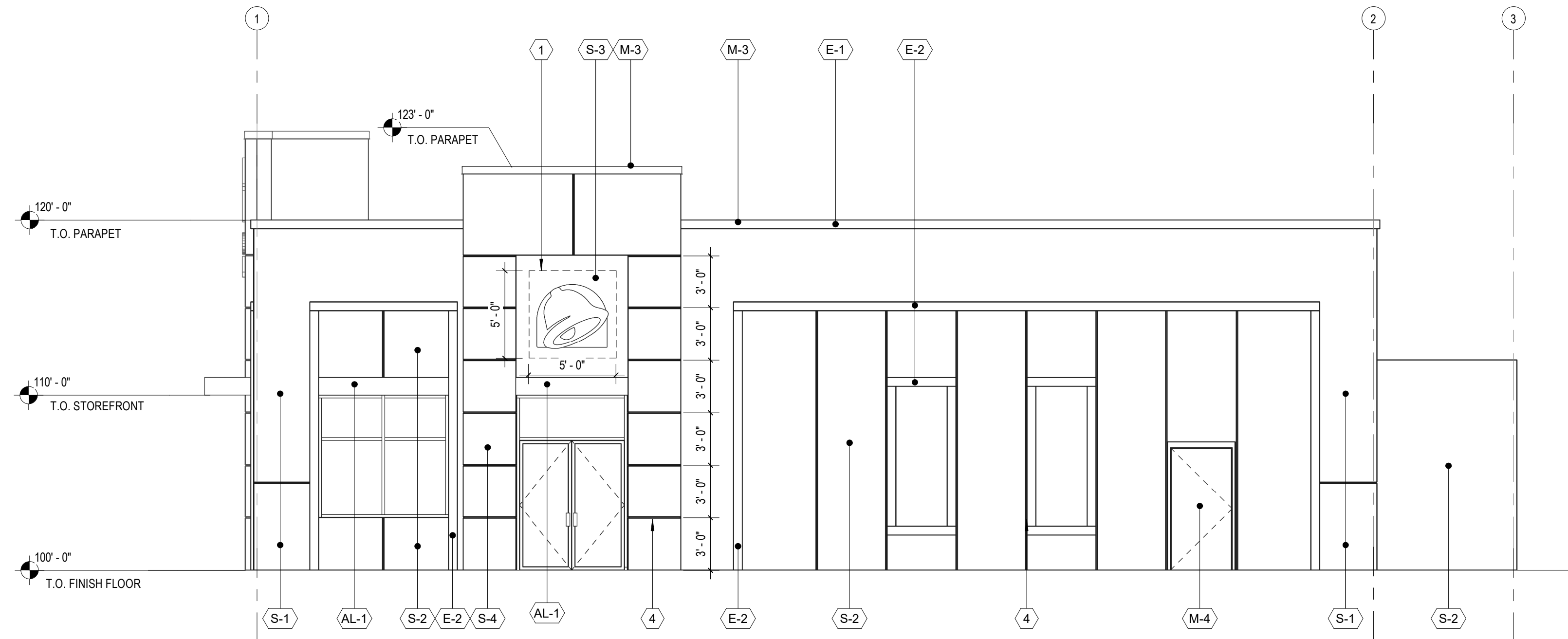
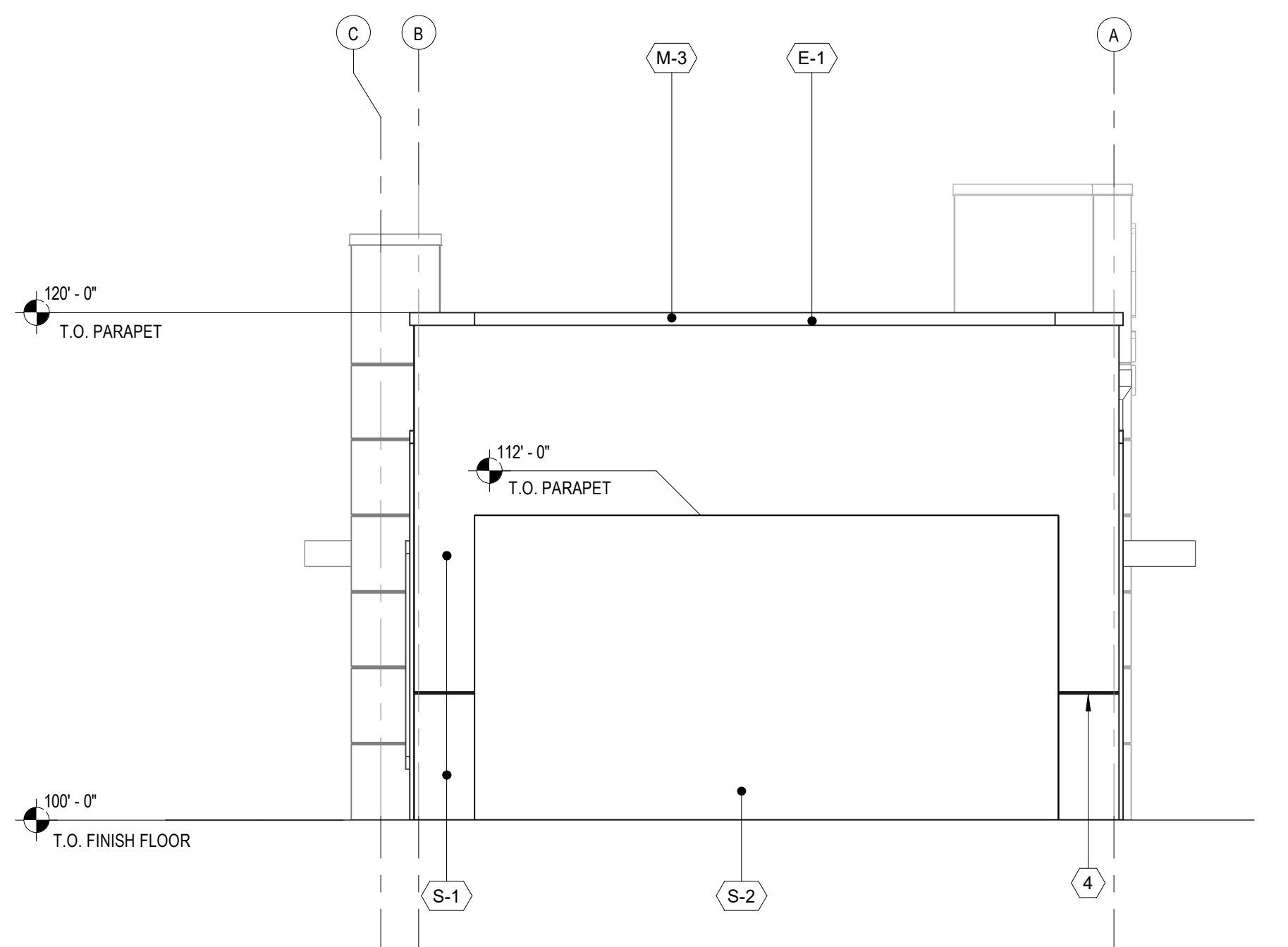


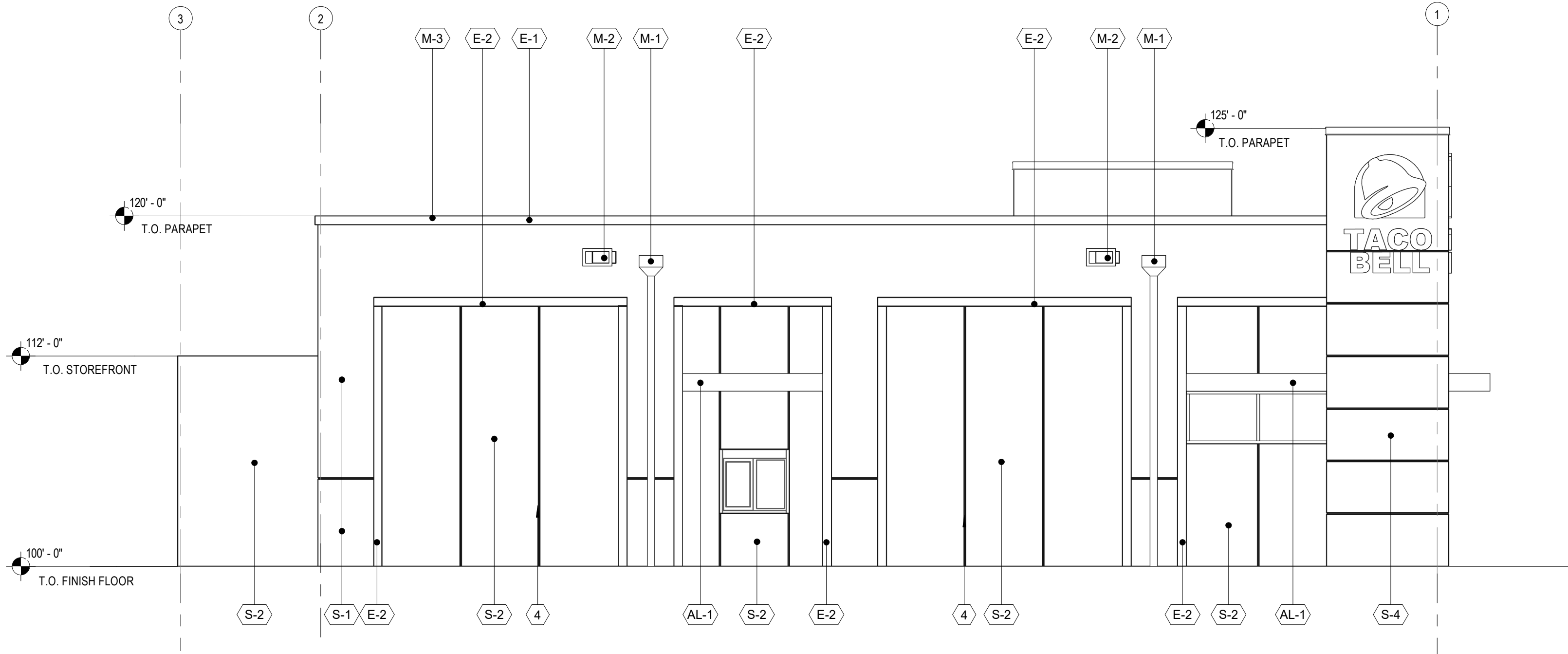
**1 East Elevation**  
SCALE: 3/16" = 1'-0"



**2 South Elevation**  
SCALE: 3/16" = 1'-0"



**3 West Elevation**  
SCALE: 3/16" = 1'-0"



**4 North Elevation**  
SCALE: 3/16" = 1'-0"

**Color and Material Schedule**

TYPE	MATERIAL	FINISH	COLOR	NOTES
S-1	STUCCO	PAINTED SYNTHETIC TOP COAT - MATTE FINISH	SW 6263 - OLYMPUS WHITE	-
S-2	STUCCO	PAINTED SYNTHETIC TOP COAT - MATTE FINISH	SW 6254 - LAZY GRAY	-
S-3	STUCCO	PAINTED SYNTHETIC TOP COAT - MATTE FINISH	SW 6257 - GIBRALTAR	-
S-4	STUCCO	PAINTED SYNTHETIC TOP COAT - MATTE FINISH	-	-
E-1	EIFS CORNICE	SANDPEBBLE TEXTURE	SW 6257 - GIBRALTAR	-
E-2	EIFS BAND	SANDPEBBLE TEXTURE	SW 6257 - GIBRALTAR	-
M-1	ALUMINUM	PRE-FINISHED DOWNSPOUTS AND GUTTER	MATCH ADJACENT COLOR	-
M-2	ALUMINUM	PRE-FINISHED SCUPPERS	MATCH ADJACENT COLOR	-
M-3	ALUMINUM	PRE-FINISHED COPINGS	MATCH BM 2133-10 ONYX	-
M-4	HOLLOW METAL DOOR	-	-	-
M-5	METAL PANEL	ANODIZED ALUMINUM CLEAR	ALUCOBOND	-
AL-1	ALUMINUM CANOPY	ANODIZED	CUSTOM PANTONE PMS 2603C	-

KEYNOTES	
1	PROVIDE 5/8" FRT EXTERIOR GRADE PLYWOOD AT SIGNAGE AREAS. SIGNAGE PROVIDED BY TENANT
2	LIGHT FIXTURES RE: ELECTRICAL
3	CONTROL JOINTS
4	1" REVEAL
5	BREAK METAL - COLOR TO MATCH ADJACENT STOREFRONTS

- GENERAL NOTES:
- FOR ADDITIONAL INFORMATION ON STOREFRONTS, SEE ENLARGED STOREFRONT ELEVATIONS SHEET.
  - FOR ADDITIONAL INFORMATION ON DOORS, SEE THE DOOR SCHEDULE SHEET.
  - FOR ADDITIONAL INFORMATION ON EXTERIOR FINISHES, SEE ASSEMBLY DETAILS SHEET.
  - PROVIDE FRT 2X BLOCKING IN STUD SPACE AT ALL EXTERIOR LIGHT FIXTURES. RE: ELECTRICAL

COPYRIGHT © All rights reserved. All drawings and documents are instruments of service prepared by Cuhaci & Peterson, P.A., P.E. as instruments of service under the supervision of the professional engineer, architect or other licensed professional. Any use or reproduction of this document without the prior written permission of Cuhaci & Peterson, P.A., P.E. is strictly prohibited.

PROJECT NO. 2210465  
 DATE 07/14/2021  
 DRAWN Author  
 CHECKED Checker

CLIENT NAME Konover South  
 431 Fairway Drive, Suite 201  
 Deer Field Beach, FL 33441

PROJECT NAME Shoppes of Westlake Landings - Parcel D-2  
 SHEET TITLE Exterior Elevations

2600 Mariand Center Parkway  
 Suite #200  
 Mariand, FL 32751  
 P (407) 661-9100  
 F (407) 661-9101  
 www.c-p.com  
 Florida Department of Business & Professional Regulation

**Cuhaci & Peterson**  
 Architects Engineers Planners

STATE OF FLORIDA  
 JESSE SCHOK  
 ARCHITECT  
 REGISTERED

PROJECT NO. 2210465  
 DATE 07/14/2021  
 DRAWN Author  
 CHECKED Checker

A201

Design Phase