

Exhibit 'C'  
CRESSWIND PALM BEACH PHASE 5  
TOPOGRAPHICAL SURVEY

THIS PAGE WAS LEFT BLANK ON PURPOSE

**NOTES**  
**COORDINATES, BEARINGS AND DISTANCES**

COORDINATES SHOWN ARE GRID  
DATUM = NAD 83 (2007 ADJUSTMENT)  
ZONE = FLORIDA EAST  
LINEAR UNIT = US SURVEY FEET  
COORDINATE SYSTEM 1983 STATE PLANE  
TRANSVERSE MERCATOR PROJECTION  
ALL DISTANCES ARE GROUND  
SCALE FACTOR = 1.0000017  
GROUND DISTANCE X SCALE FACTOR = GRID DISTANCE  
BEARINGS AS SHOWN HEREON ARE GRID DATUM,  
NAD 83 (2007 ADJUSTMENT), FLORIDA EAST ZONE.

**LEGEND/ABBREVIATIONS**

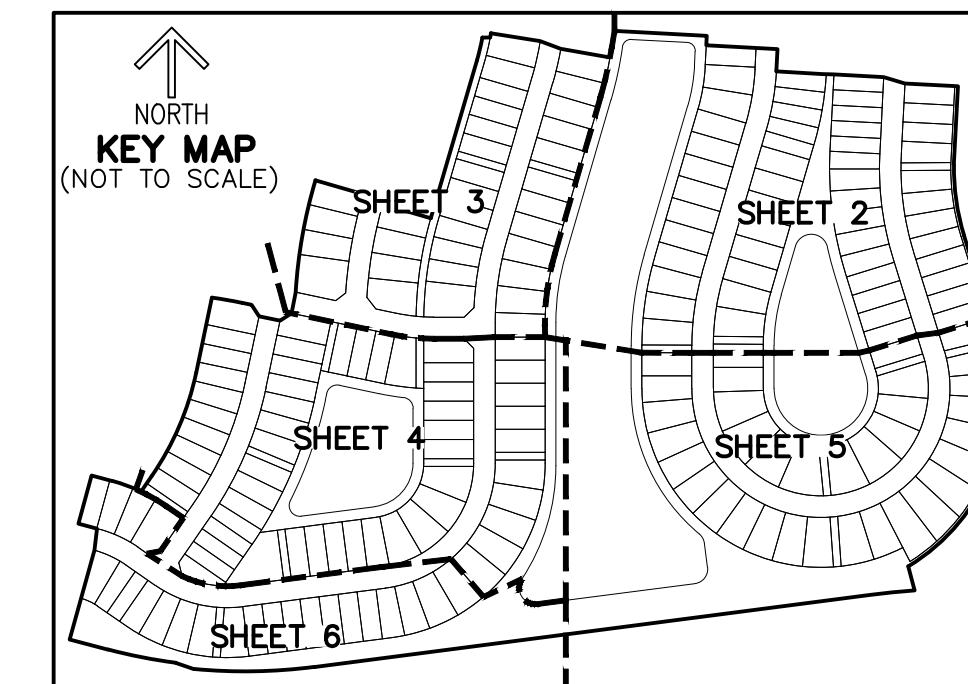
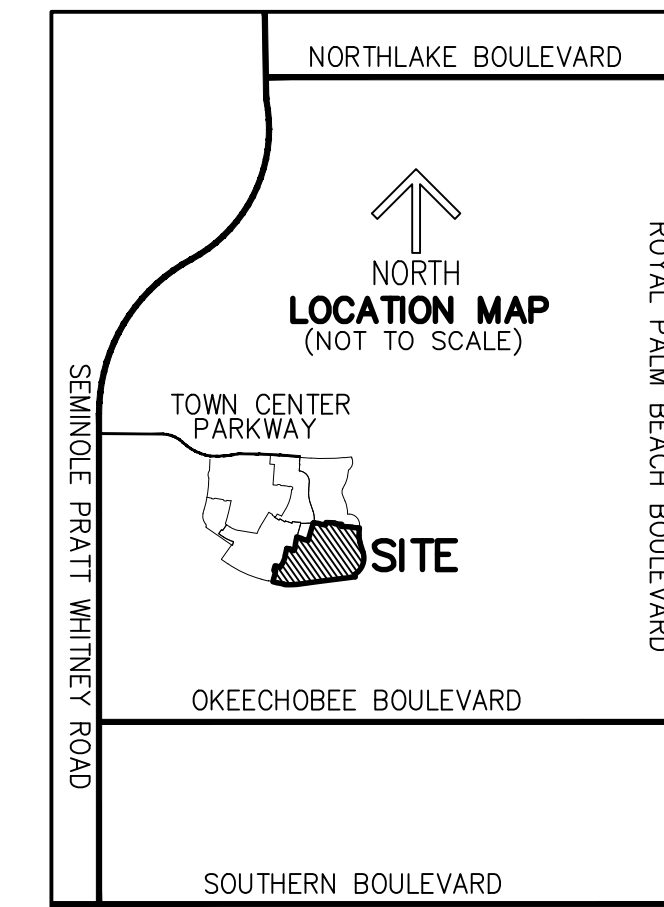
CL - CENTERLINE  
Δ - DELTA (CENTRAL ANGLE)  
CB - CHORD BEARING  
CD - CHORD DISTANCE  
DE - DRAINAGE EASEMENT  
E - EASTING  
(WHEN USED WITH COORDINATES)  
N - NORTHING  
(WHEN USED WITH COORDINATES)  
L - ARC LENGTH  
LMAE - LAKE MAINTENANCE  
ACCESS EASEMENT  
LAE - LIMITED ACCESS EASEMENT  
LB - LICENSED BUSINESS  
(R) - RADIAL LINE  
O.S.T./OST - OPEN SPACE TRACT  
PC - POINT OF CURVATURE  
PT - POINT OF TANGENCY  
PNT - POINT OF NON-TANGENCY  
PRC - POINT OF REVERSE CURVATURE  
R - RADIUS  
RPE - RURAL PARKWAY EASEMENT  
UE - UTILITY EASEMENT  
P.B. - PLAT BOOK  
R.P.B. - ROAD PLAT BOOK  
PG./PGS. - PAGE/PAGES  
6-43-41 - SECTION 6, TOWNSHIP 43 SOUTH,  
RANGE 41 EAST  
NAD - NORTH AMERICAN DATUM  
● - SET PERMANENT CONTROL POINT  
NAIL AND DISK STAMPED  
"C&W LB 3591"  
● - PRM - SET PERMANENT REFERENCE  
MONUMENT  
SET 5/8" IRON ROD WITH CAP  
STAMPED "C&W LB 3591"  
■ - PRM - FOUND PERMANENT REFERENCE  
MONUMENT  
4" x 4" x 24" CONCRETE MONUMENT  
WITH DISK STAMPED "PRM LB 3591"

**DESCRIPTION:**

A PORTION OF SECTIONS 6 AND 7, TOWNSHIP 43 SOUTH, RANGE 41 EAST, CITY OF WESTLAKE, PALM BEACH COUNTY, FLORIDA, BEING MORE PARTICULARLY DESCRIBED AS FOLLOWS:

BEGINNING AT THE SOUTHEAST CORNER OF TRACT O.S.T. 1, CRESSWIND PALM BEACH PHASE 3, ACCORDING TO THE PLAT THEREOF, AS RECORDED IN PLAT BOOK 132, PAGES 120 THROUGH 126 OF THE PUBLIC RECORDS OF PALM BEACH COUNTY, FLORIDA, SAID POINT BEING ON THE NORTH BOUNDARY LINE OF PERSIMMON BOULEVARD EAST - PLAT 3, AND THE EASTERLY EXTENSION THEREOF, AS RECORDED IN ROAD PLAT BOOK 12, PAGES 158 THROUGH 160 OF SAID PUBLIC RECORDS, THENCE ALONG SAID NORTH BOUNDARY LINE, THE FOLLOWING FIVE (5) COURSES AND DISTANCES: S75°14'29"E, A DISTANCE OF 103.22 FEET TO THE POINT OF CURVE TO THE LEFT, A RADIAL DISTANCE OF 1,399.00 FEET; THENCE EASTERLY ALONG THE ARC, THROUGH A CENTRAL ANGLE OF 07°22'38", A DISTANCE OF 180.13 FEET TO A POINT OF NON-TANGENCY; THENCE S70°59'35"E, A DISTANCE OF 50.31 FEET TO THE POINT OF CURVE OF A NON TANGENT CURVE TO THE LEFT, OF WHICH THE RADIUS POINT LIES N05°22'42"E, A RADIAL DISTANCE OF 1,410.00 FEET; THENCE EASTERLY ALONG THE ARC, THROUGH A CENTRAL ANGLE OF 12°46'29", A DISTANCE OF 314.38 FEET; THENCE N82°36'13"E, A DISTANCE OF 1,459.69 FEET TO THE POINT OF CURVE TO THE RIGHT, A RADIAL DISTANCE OF 2,190.00 FEET; THENCE EASTERLY ALONG THE ARC, THROUGH A CENTRAL ANGLE OF 03°01'44", A DISTANCE OF 115.77 FEET TO A POINT OF NON-TANGENCY; THENCE N14°48'47"W, A DISTANCE OF 64.89 FEET TO THE POINT OF CURVE OF A NON TANGENT CURVE TO THE LEFT, OF WHICH THE RADIUS POINT LIES N31°05'49"W, A RADIAL DISTANCE OF 518.00 FEET; THENCE NORTHERLY ALONG THE ARC, THROUGH A CENTRAL ANGLE OF 76°07'29", A DISTANCE OF 688.23 FEET; THENCE N17°13'19"W, A DISTANCE OF 276.23 FEET TO THE POINT OF CURVE TO THE RIGHT, A RADIAL DISTANCE OF 592.00 FEET; THENCE NORTHERLY ALONG THE ARC, THROUGH A CENTRAL ANGLE OF 18°14'47", A DISTANCE OF 188.53 FEET TO A POINT OF NON-TANGENCY; THENCE N02°57'09"E, A DISTANCE OF 203.52 FEET TO THE POINT BEING ON THE SOUTH BOUNDARY LINE OF CRESSWIND PALM BEACH PHASE 4, AS RECORDED IN PLAT BOOK \_\_\_\_\_, PAGES \_\_\_\_\_ THROUGH \_\_\_\_\_ OF SAID PUBLIC RECORDS, THENCE ALONG SAID SOUTH BOUNDARY LINE, THE FOLLOWING FOURTEEN (14) COURSES AND DISTANCES: N87°02'51"W, A DISTANCE OF 138.00 FEET; THENCE N72°52'20"W, A DISTANCE OF 57.76 FEET; THENCE N87°02'51"W, A DISTANCE OF 130.00 FEET; THENCE N87°47'15"W, A DISTANCE OF 30.08 FEET; THENCE N86°46'06"W, A DISTANCE OF 120.00 FEET TO THE POINT OF CURVE OF A NON TANGENT CURVE TO THE LEFT, OF WHICH THE RADIUS POINT LIES N86°46'06"W, A RADIAL DISTANCE OF 670.00 FEET; THENCE NORTHERLY ALONG THE ARC, THROUGH A CENTRAL ANGLE OF 00°12'10", A DISTANCE OF 2.37 FEET; THENCE N03°01'44"E, A DISTANCE OF 55.78 FEET; THENCE N86°58'16"W, A DISTANCE OF 186.00 FEET; THENCE N03°01'44"E, A DISTANCE OF 25.02 FEET; THENCE N86°58'16"W, A DISTANCE OF 240.52 FEET; THENCE S09°58'31"W, A DISTANCE OF 70.38 FEET; THENCE N80°01'29"W, A DISTANCE OF 130.00 FEET; THENCE N89°30'20"W, A DISTANCE OF 57.03 FEET; THENCE N80°47'51"W, A DISTANCE OF 130.00 FEET TO A POINT ON THE EAST BOUNDARY LINE OF CRESSWIND PALM BEACH PHASE 2, AS RECORDED IN PLAT BOOK 130, PAGES 199 THROUGH 205 OF SAID PUBLIC RECORDS, THENCE ALONG SAID EAST BOUNDARY LINE, THE FOLLOWING TWO (2) COURSES AND DISTANCES: SAID POINT BEING ON THE CURVE OF A NON TANGENT CURVE TO THE RIGHT, OF WHICH THE RADIUS POINT LIES N80°47'51"W, A RADIAL DISTANCE OF 642.00 FEET; THENCE SOUTHERLY ALONG THE ARC, THROUGH A CENTRAL ANGLE OF 01°00'23", A DISTANCE OF 11.28 FEET TO A POINT OF NON-TANGENCY; THENCE S89°16'47"W, A DISTANCE OF 20.38 FEET TO THE POINT BEING ON THE EAST BOUNDARY LINE OF SAID CRESSWIND PALM BEACH PHASE 4; THENCE ALONG SAID EAST BOUNDARY LINE, THE FOLLOWING TWO (2) COURSES AND DISTANCES: SAID POINT BEING ON THE CURVE OF A NON TANGENT CURVE TO THE RIGHT, OF WHICH THE RADIUS POINT LIES N79°26'07"W, A RADIAL DISTANCE OF 622.00 FEET; THENCE SOUTHERLY ALONG THE ARC, THROUGH A CENTRAL ANGLE OF 05°42'54", A DISTANCE OF 62.04 FEET; THENCE S18°16'48"W, A DISTANCE OF 421.43 FEET TO THE POINT BEING ON THE SOUTH BOUNDARY LINE OF SAID PLAT; THENCE ALONG SAID SOUTH BOUNDARY LINE, THE FOLLOWING THREE (3) COURSES AND DISTANCES: N73°43'12"W, A DISTANCE OF 130.00 FEET; THENCE N68°52'46"W, A DISTANCE OF 56.20 FEET; THENCE N73°43'12"W, A DISTANCE OF 130.00 FEET TO THE POINT BEING ON THE EAST BOUNDARY LINE OF CRESSWIND PALM BEACH PHASE 3, AS RECORDED IN PLAT BOOK 132, PAGES 120 THROUGH 126 OF SAID PUBLIC RECORDS, THENCE ALONG SAID EAST BOUNDARY LINE, THE FOLLOWING SIXTEEN (16) COURSES AND DISTANCES: SAID POINT BEING ON THE CURVE OF A NON TANGENT CURVE TO THE LEFT, OF WHICH THE RADIUS POINT LIES S73°24'03"E, A RADIAL DISTANCE OF 1,295.47 FEET; THENCE SOUTHERLY ALONG THE ARC, THROUGH A CENTRAL ANGLE OF 13°06'43", A DISTANCE OF 296.46 FEET; THENCE S10°53'13"W, A DISTANCE OF 56.01 FEET; THENCE S57°18'31"W, A DISTANCE OF 35.62 FEET; THENCE N78°08'51"W, A DISTANCE OF 56.00 FEET; THENCE N33°06'51"W, A DISTANCE OF 35.36 FEET; THENCE N78°08'51"W, A DISTANCE OF 24.70 FEET TO THE POINT OF CURVE TO THE LEFT, A RADIAL DISTANCE OF 1,172.00 FEET; THENCE WESTERLY ALONG THE ARC, THROUGH A CENTRAL ANGLE OF 03°55'43", A DISTANCE OF 80.36 FEET TO A POINT OF NON-TANGENCY; THENCE S11°53'09"W, A DISTANCE OF 199.93 FEET TO THE POINT OF CURVE TO THE RIGHT, A RADIAL DISTANCE OF 742.00 FEET; THENCE SOUTHWESTERLY ALONG THE ARC, THROUGH A CENTRAL ANGLE OF 22°44'41", A DISTANCE OF 294.55 FEET; THENCE S34°37'50"W, A DISTANCE OF 49.53 FEET TO THE POINT OF CURVE OF A NON TANGENT CURVE TO THE LEFT, OF WHICH THE RADIUS POINT LIES S25°04'33"W, A RADIAL DISTANCE OF 458.00 FEET; THENCE WESTERLY ALONG THE ARC, THROUGH A CENTRAL ANGLE OF 09°51'49", A DISTANCE OF 78.85 FEET; THENCE N74°47'16"W, A DISTANCE OF 56.57 FEET; THENCE S15°12'44"W, A DISTANCE OF 130.00 FEET; THENCE S74°47'16"E, A DISTANCE OF 50.00 FEET; THENCE S06°43'42"W, A DISTANCE OF 56.63 FEET; THENCE S15°35'19"W, A DISTANCE OF 241.18 FEET TO THE POINT OF BEGINNING.

CONTAINING 2,837,901 SQUARE FEET/65.1492 ACRES, MORE OR LESS.



**SURVEYOR'S NOTES AND REPORT:**

1. REPRODUCTIONS OF THIS SURVEY ARE NOT VALID WITHOUT A SIGNED AND SEALED OR VERIFIABLE ELECTRONIC SIGNATURE OF A FLORIDA LICENSED PROFESSIONAL LAND SURVEYOR AND MAPPER
2. ADDITIONS OR DELETIONS TO SURVEY MAPS OR REPORTS BY OTHER THAN THE SIGNING PARTY OR PARTIES IS PROHIBITED WITHOUT WRITTEN CONSENT OF THE SIGNING PARTY OR PARTIES.
3. THE LAND DESCRIPTION SHOWN HEREON WAS PREPARED BY THE SURVEYOR.
4. BEARINGS SHOWN HEREON ARE BASED ON A RECORD PLAT BEARING OF S11°53'09"W ALONG THE EAST LINE OF TRACT W-9, CRESSWIND PALM BEACH PHASE 3, AS RECORDED IN PLAT BOOK 132, PAGES 120 THROUGH 126 OF THE PUBLIC RECORDS OF PALM BEACH COUNTY, FLORIDA, AND RELATIVE TO THE FLORIDA STATE PLANE COORDINATE SYSTEM, EAST ZONE, NORTH AMERICAN DATUM OF 1983 (2007 ADJUSTMENT).
5. COORDINATES SHOWN HEREON ARE RELATIVE TO THE FLORIDA STATE PLANE COORDINATE SYSTEM, EAST ZONE, NORTH AMERICAN DATUM OF 1983 (2007 ADJUSTMENT), AND BASED ON REDUNDANT G.P.S. OBSERVATIONS UTILIZING THE CERTIFIED LENGEMAN NETWORK.
6. LANDS SHOWN HEREON WERE NOT ABSTRACTED, BY THE SURVEYOR, FOR RIGHTS-OF-WAY, EASEMENTS, OWNERSHIP, OR OTHER INSTRUMENTS OF RECORD.

**CERTIFICATE:**

I HEREBY CERTIFY THAT THE ATTACHED BOUNDARY SURVEY OF THE HEREON DESCRIBED PROPERTY IS TRUE AND CORRECT TO THE BEST OF MY KNOWLEDGE AND BELIEF AS PREPARED UNDER MY DIRECTION ON OCTOBER 15, 2021. I FURTHER CERTIFY THAT THIS BOUNDARY SURVEY MEETS THE STANDARDS OF PRACTICE SET FORTH IN RULE 5J-17, FLORIDA ADMINISTRATIVE CODE, ADOPTED BY THE FLORIDA BOARD OF PROFESSIONAL SURVEYORS AND MAPPERS, PURSUANT TO FLORIDA STATUTES CHAPTER 472.027.

REVISIONS	DATE	BY
FILE NAME: 8272-PHASE5-SURVEY-1		

**CAULFIELD & WHEELER, INC.**  
CIVIL ENGINEERING - LAND PLANNING  
LANDSCAPE ARCHITECTURE - SURVEYING  
7900 GLADES ROAD - SUITE 100  
BOCA RATON, FLORIDA 33434  
PHONE (561) 392-1991 / FAX (561) 750-4452

**BOUNDARY SURVEY**  
**A PORTION OF SECTIONS 6 AND 7**  
**TOWNSHIP 43 SOUTH, RANGE 41 EAST**  
**CITY OF WESTLAKE**  
**PALM BEACH COUNTY, FLORIDA**

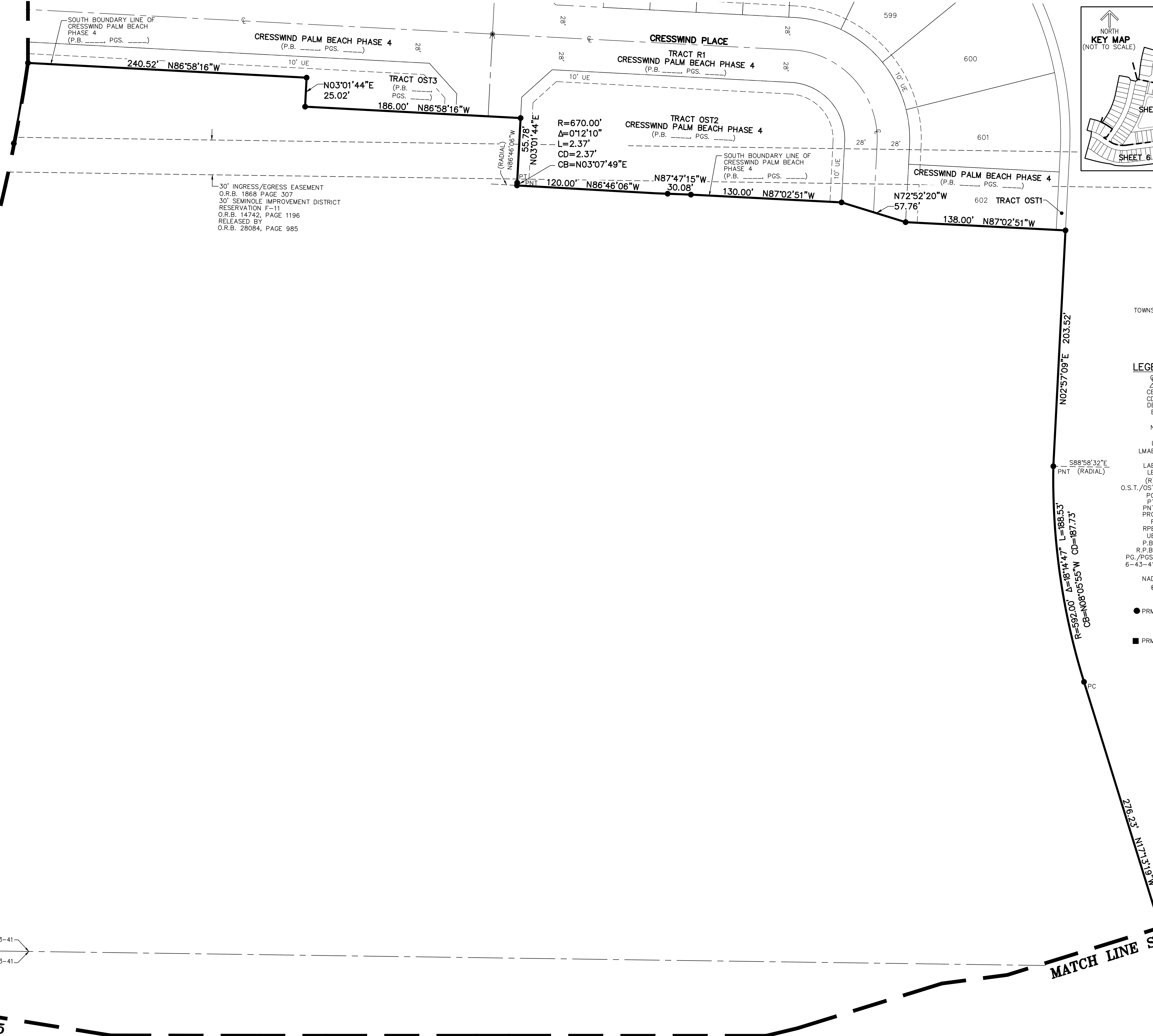
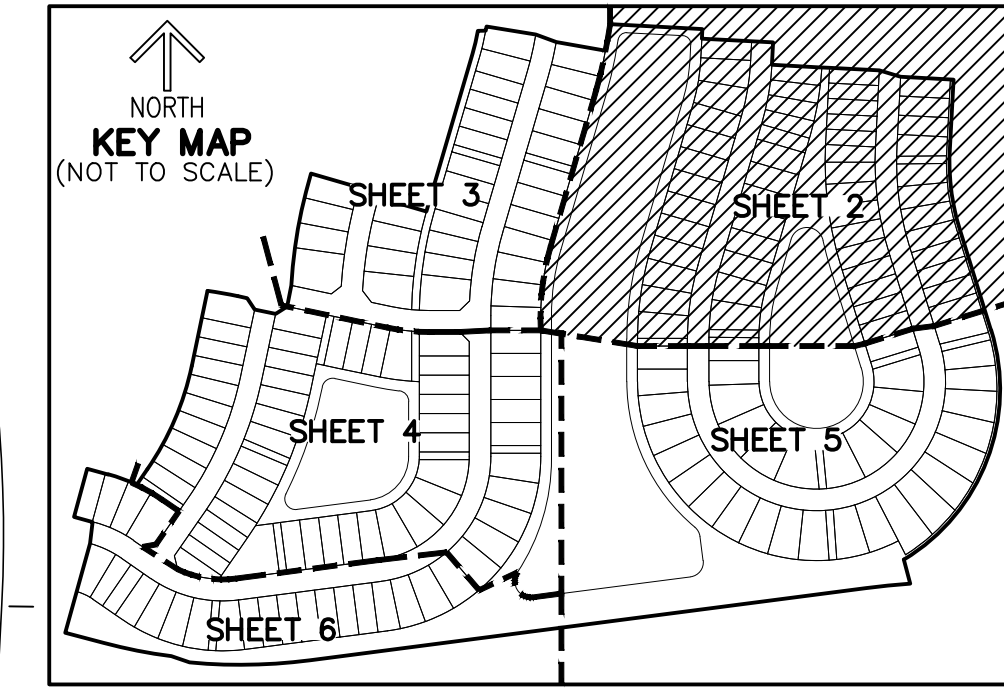
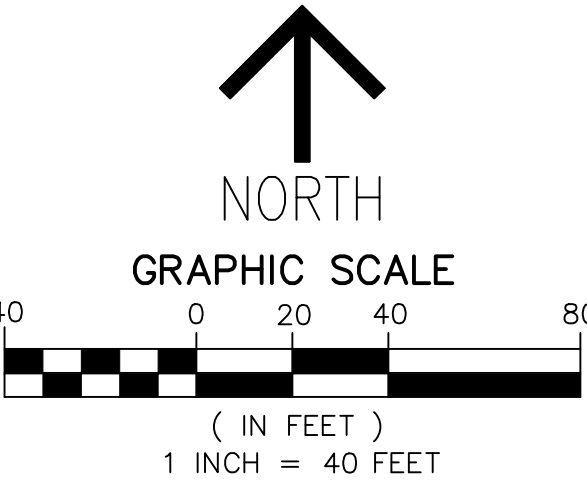
DATE 10/15/2021  
DRAWN BY AS  
F.B./ PG. ELEC  
SCALE AS SHOWN

DAVID P. LINDLEY  
REGISTERED LAND  
SURVEYOR NO. 5005  
STATE OF FLORIDA  
L.B. 3591

JOB # 8272-5  
SHT. NO.  
**1**  
OF 6 SHEETS

**NOTES**  
**COORDINATES, BEARINGS AND DISTANCES**

COORDINATES SHOWN ARE GRID  
 DATUM = NAD 83 (2007 ADJUSTMENT)  
 ZONE = FLORIDA EAST  
 LINEAR UNIT = US SURVEY FEET  
 COORDINATE SYSTEM 1983 STATE PLANE  
 TRANSVERSE MERCATOR PROJECTION  
 ALL DISTANCES ARE GROUND  
 SCALE FACTOR = 1.0000017  
 GROUND DISTANCE X SCALE FACTOR = GRID DISTANCE  
 BEARINGS AS SHOWN HEREON ARE GRID DATUM,  
 NAD 83 (2007 ADJUSTMENT), FLORIDA EAST ZONE.



30' INGRESS/EGRESS EASEMENT  
 O.R.B. 1868 PAGE 307  
 30' SEMINOLE IMPROVEMENT DISTRICT  
 RESERVATION F-11  
 O.R.B. 14742, PAGE 1196  
 RELEASED BY  
 O.R.B. 28084, PAGE 985

**UNPLATTED**  
 A PORTION OF SECTION 6  
 TOWNSHIP 43 SOUTH, RANGE 41 EAST

- LEGEND/ABBREVIATIONS**
- CL - CENTERLINE
  - Δ - DELTA (CENTRAL ANGLE)
  - CB - CHORD BEARING
  - CD - CHORD DISTANCE
  - DE - DRAINAGE EASEMENT
  - E - EASTING
  - (WHEN USED WITH COORDINATES)
  - N - NORTHING
  - (WHEN USED WITH COORDINATES)
  - L - ARC LENGTH
  - LMAE - LAKE MAINTENANCE ACCESS EASEMENT
  - LAE - LIMITED ACCESS EASEMENT
  - LB - LICENSED BUSINESS
  - (R) - RADIAL LINE
  - O.S.T./OST - OPEN SPACE TRACT
  - PC - POINT OF CURVATURE
  - PT - POINT OF TANGENCY
  - PNT - POINT OF NON-TANGENCY
  - PRC - POINT OF REVERSE CURVATURE
  - R - RADIUS
  - RPE - RURAL PARKWAY EASEMENT
  - UE - UTILITY EASEMENT
  - P.B. - PLAT BOOK
  - R.P.B. - ROAD PLAT BOOK
  - PG./PGS. - PAGE/PAGES
  - 6-43-41 - SECTION 6, TOWNSHIP 43 SOUTH, RANGE 41 EAST
  - NAD - NORTH AMERICAN DATUM
  - - SET PERMANENT CONTROL POINT NAIL AND DISK STAMPED "C&W LB 3591"
  - - PRM - SET PERMANENT REFERENCE MONUMENT SET 5/8" IRON ROD WITH CAP STAMPED "C&W LB 3591"
  - - PRM - FOUND PERMANENT REFERENCE MONUMENT 4" x 4" x 24" CONCRETE MONUMENT WITH DISK STAMPED "PRM LB 3591"

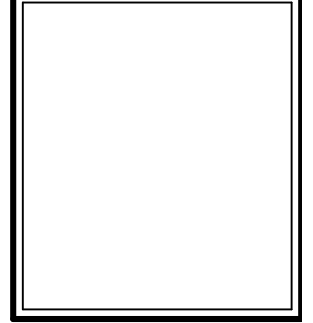
**UNPLATTED**  
 A PORTION OF SECTION 6  
 TOWNSHIP 43 SOUTH, RANGE 41 EAST

BY	
DATE	
REVISIONS	
FILE NAME	8272-PHASE-5-SURVEY-1

**CAULFIELD & WHEELER, INC.**  
 CIVIL ENGINEERING - LAND PLANNING  
 LANDSCAPE ARCHITECTURE - SURVEYING  
 7900 GLADES ROAD - SUITE 100  
 BOCA RATON, FLORIDA 33434  
 PHONE (561) 392-1991 / FAX (561) 750-4452

**BOUNDARY SURVEY 6 AND 7**  
 A PORTION OF SECTIONS 6 AND 7  
 TOWNSHIP 43 SOUTH, RANGE 41 EAST  
 CITY OF WESTLAKE  
 PALM BEACH COUNTY, FLORIDA

DATE 10/15/2021  
 DRAWN BY AS  
 F.B./ PG. ELEC  
 SCALE AS SHOWN

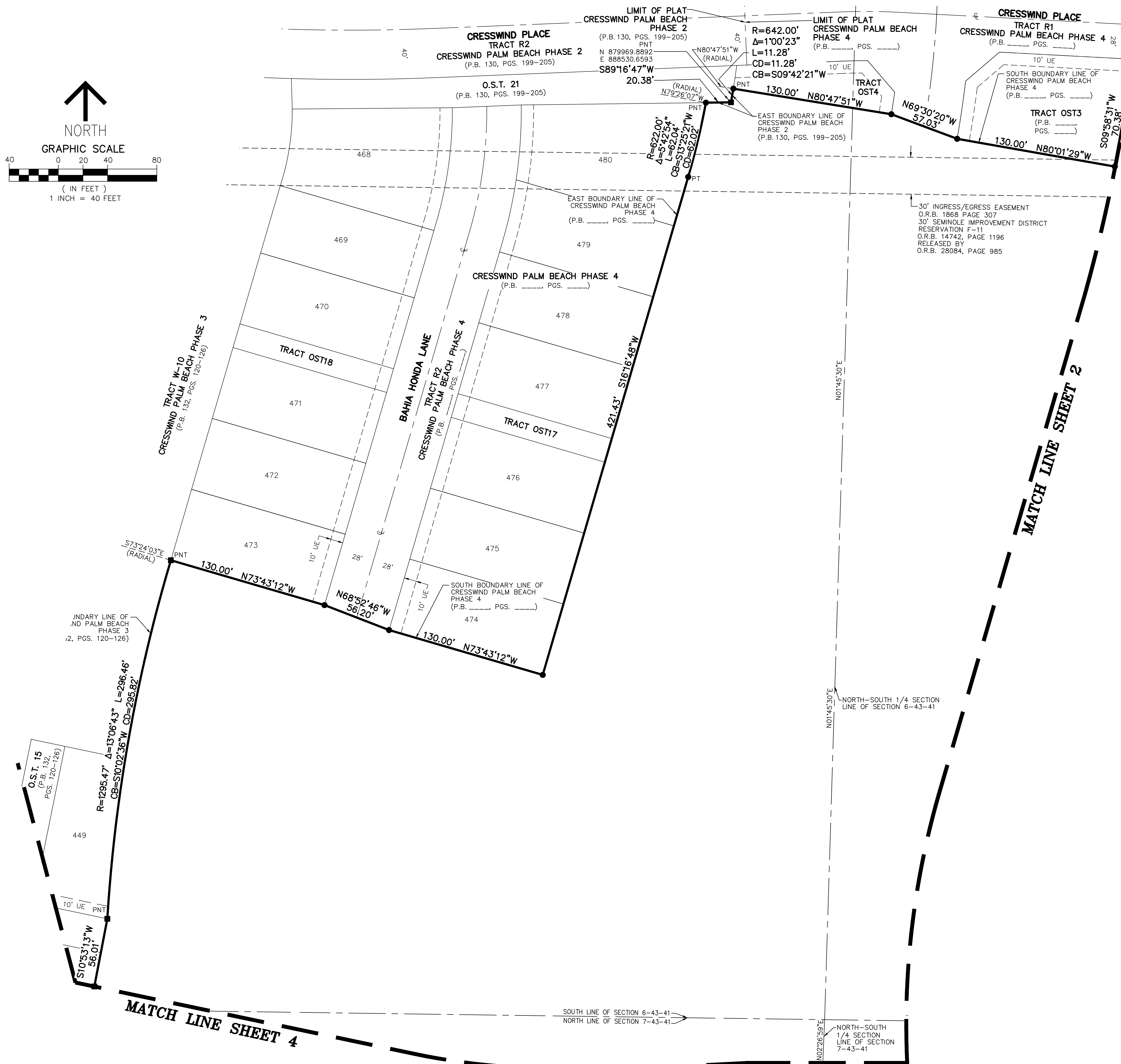
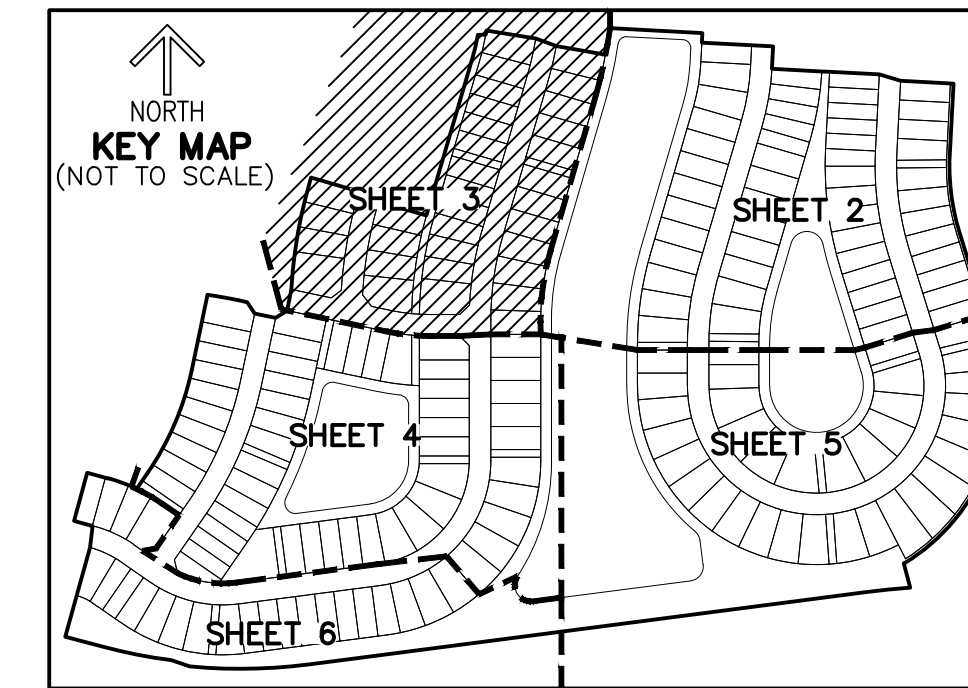
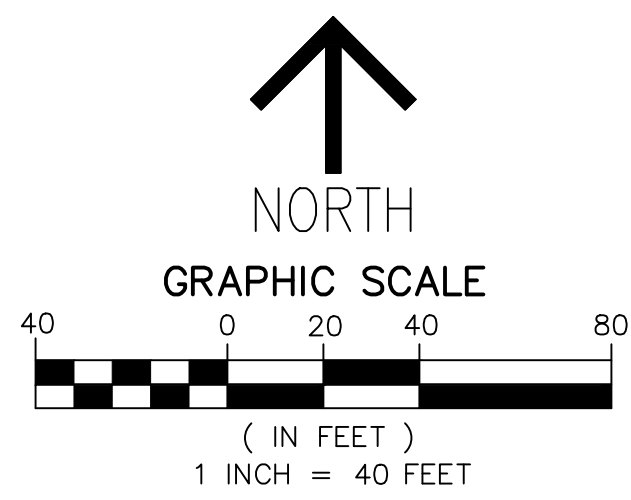


JOB # 8272-5  
 SHT. NO. 2  
 OF 6 SHEETS

MATCH LINE SHEET 5

MATCH LINE SHEET 5

MATCH LINE SHEET 3



**LEGEND/ABBREVIATIONS**

- CL - CENTERLINE
- Δ - DELTA (CENTRAL ANGLE)
- CB - CHORD BEARING
- CD - CHORD DISTANCE
- DE - DRAINAGE EASEMENT
- E - EASTING
- (WHEN USED WITH COORDINATES)
- N - NORTHING
- (WHEN USED WITH COORDINATES)
- L - ARC LENGTH
- LMAE - LAKE MAINTENANCE ACCESS EASEMENT
- LAE - LIMITED ACCESS EASEMENT
- LB - LICENSED BUSINESS
- (R) - RADIAL LINE
- O.S.T./OST - OPEN SPACE TRACT
- PC - POINT OF CURVATURE
- PT - POINT OF TANGENCY
- PNT - POINT OF NON-TANGENCY
- PRC - POINT OF REVERSE CURVATURE
- R - RADIUS
- RPE - RURAL PARKWAY EASEMENT
- UE - UTILITY EASEMENT
- P.B. - PLAT BOOK
- R.P.B. - ROAD PLAT BOOK
- PG./PGS. - PAGE/PAGES
- 6-43-41 - SECTION 6, TOWNSHIP 43 SOUTH, RANGE 41 EAST
- NAD - NORTH AMERICAN DATUM
- - SET PERMANENT CONTROL POINT NAIL AND DISK STAMPED "C&W LB 3591"
- PRM - SET PERMANENT REFERENCE MONUMENT SET 5/8" IRON ROD WITH CAP STAMPED "C&W LB 3591"
- PRM - FOUND PERMANENT REFERENCE MONUMENT 4" x 4" x 24" CONCRETE MONUMENT WITH DISK STAMPED "PRM LB 3591"

**NOTES**

**COORDINATES, BEARINGS AND DISTANCES**  
 COORDINATES SHOWN ARE GRID  
 DATUM = NAD 83 (2007 ADJUSTMENT)  
 ZONE = FLORIDA EAST  
 LINEAR UNIT = US SURVEY FEET  
 COORDINATE SYSTEM 1983 STATE PLANE  
 TRANSVERSE MERCATOR PROJECTION  
 ALL DISTANCES ARE GROUND  
 SCALE FACTOR = 1.0000017  
 GROUND DISTANCE X SCALE FACTOR = GRID DISTANCE  
 BEARINGS AS SHOWN HEREON ARE GRID DATUM,  
 NAD 83 (2007 ADJUSTMENT), FLORIDA EAST ZONE.

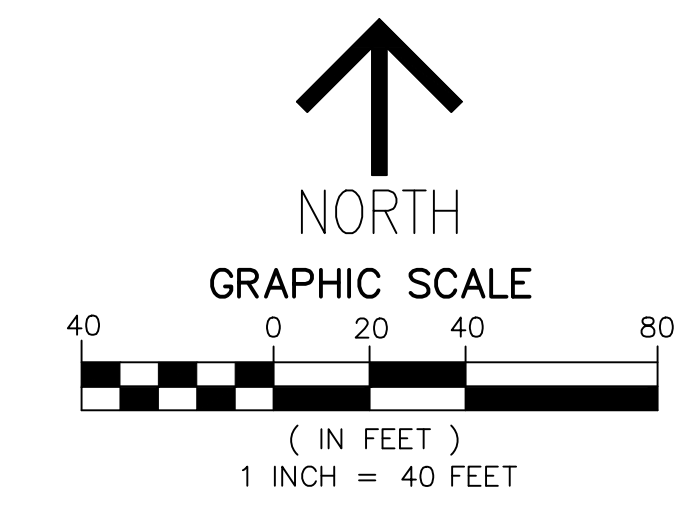
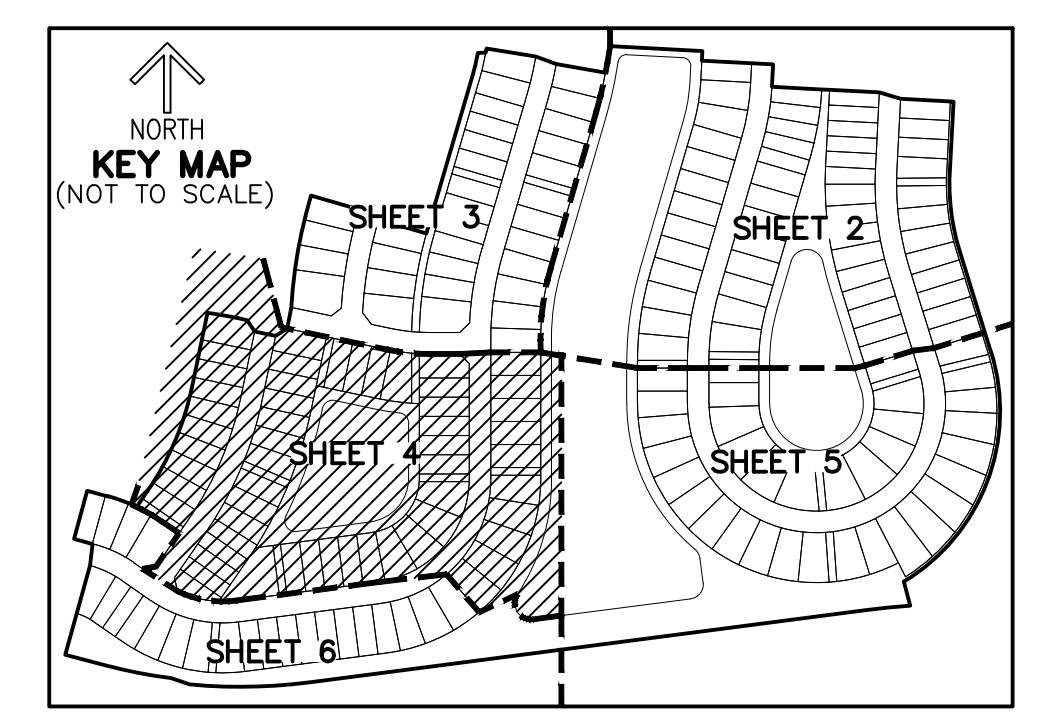
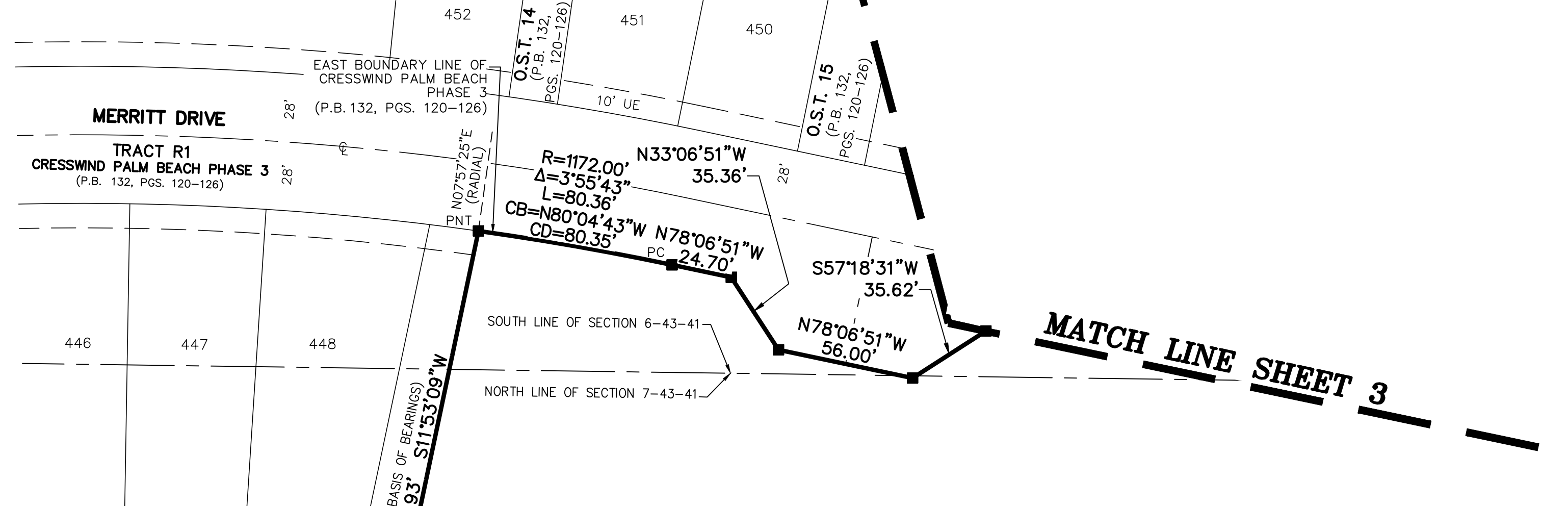
BY	
DATE	
REVISIONS	
FILE NAME	8272-PHASE5-SURVEY-1

**CAULFIELD & WHEELER, INC.**  
 CIVIL ENGINEERING - LAND PLANNING  
 LANDSCAPE ARCHITECTURE - SURVEYING  
 7900 GLADES ROAD - SUITE 100  
 BOCA RATON, FLORIDA 33434  
 PHONE (561) 392-1991 / FAX (561) 750-4452

**BOUNDARY SURVEY 6 AND 7**  
 A PORTION OF SECTIONS 6 AND 7  
 TOWNSHIP 43 SOUTH, RANGE 41 EAST  
 CITY OF WESTLAKE  
 PALM BEACH COUNTY, FLORIDA

DATE 10/15/2021  
 DRAWN BY AS  
 F.B./ PG. ELEC  
 SCALE AS SHOWN

JOB # 8272-5  
 SHT. NO. 3  
 OF 6 SHEETS



- LEGEND/ABBREVIATIONS**
- ⊙ - CENTERLINE
  - Δ - DELTA (CENTRAL ANGLE)
  - CB - CHORD BEARING
  - CD - CHORD DISTANCE
  - DE - DRAINAGE EASEMENT
  - E - EASTING
  - (WHEN USED WITH COORDINATES)
  - N - NORTHING
  - (WHEN USED WITH COORDINATES)
  - L - ARC LENGTH
  - (WHEN USED WITH COORDINATES)
  - LMAE - LAKE MAINTENANCE ACCESS EASEMENT
  - LAE - LIMITED ACCESS EASEMENT
  - LB - LICENSED BUSINESS
  - (R) - RADIAL LINE
  - O.S.T./OST - OPEN SPACE TRACT
  - PC - POINT OF CURVATURE
  - PT - POINT OF TANGENCY
  - PNT - POINT OF NON-TANGENCY
  - PRC - POINT OF REVERSE CURVATURE
  - R - RADIUS
  - RPE - RURAL PARKWAY EASEMENT
  - UE - UTILITY EASEMENT
  - P.B. - PLAT BOOK
  - R.P.B. - ROAD PLAT BOOK
  - PG./PGS. - PAGE/PAGES
  - 6-43-41 - SECTION 6, TOWNSHIP 43 SOUTH, RANGE 41 EAST
  - NAD - NORTH AMERICAN DATUM
  - - SET PERMANENT CONTROL POINT NAIL AND DISK STAMPED "C&W LB 3591"
  - - SET PERMANENT REFERENCE MONUMENT SET 5/8" IRON ROD WITH CAP STAMPED "C&W LB 3591"
  - - FOUND PERMANENT REFERENCE MONUMENT 4"x 4"x 24" CONCRETE MONUMENT WITH DISK STAMPED "PRM LB 3591"

**NOTES**  
**COORDINATES, BEARINGS AND DISTANCES**

COORDINATES SHOWN ARE GRID  
DATUM = NAD 83 (2007 ADJUSTMENT)  
ZONE = FLORIDA EAST  
LINEAR UNIT = US SURVEY FEET  
COORDINATE SYSTEM 1983 STATE PLANE  
TRANSVERSE MERCATOR PROJECTION  
ALL DISTANCES ARE GROUND  
SCALE FACTOR = 1.0000017  
GROUND DISTANCE X SCALE FACTOR = GRID DISTANCE  
BEARINGS AS SHOWN HEREON ARE GRID DATUM,  
NAD 83 (2007 ADJUSTMENT), FLORIDA EAST ZONE.

NO.	DATE	BY

REVISIONS

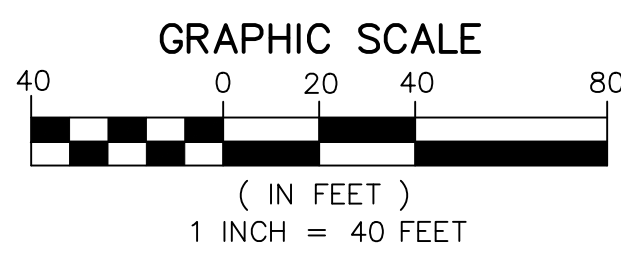
FILE NAME: 8272-PHASE5-SURVEY-1

**CAULFIELD & WHEELER, INC.**  
CIVIL ENGINEERING - LAND PLANNING  
LANDSCAPE ARCHITECTURE - SURVEYING  
7900 GLADES ROAD - SUITE 100  
BOCA RATON, FLORIDA 33434  
PHONE (561) 392-1991 / FAX (561) 750-4452

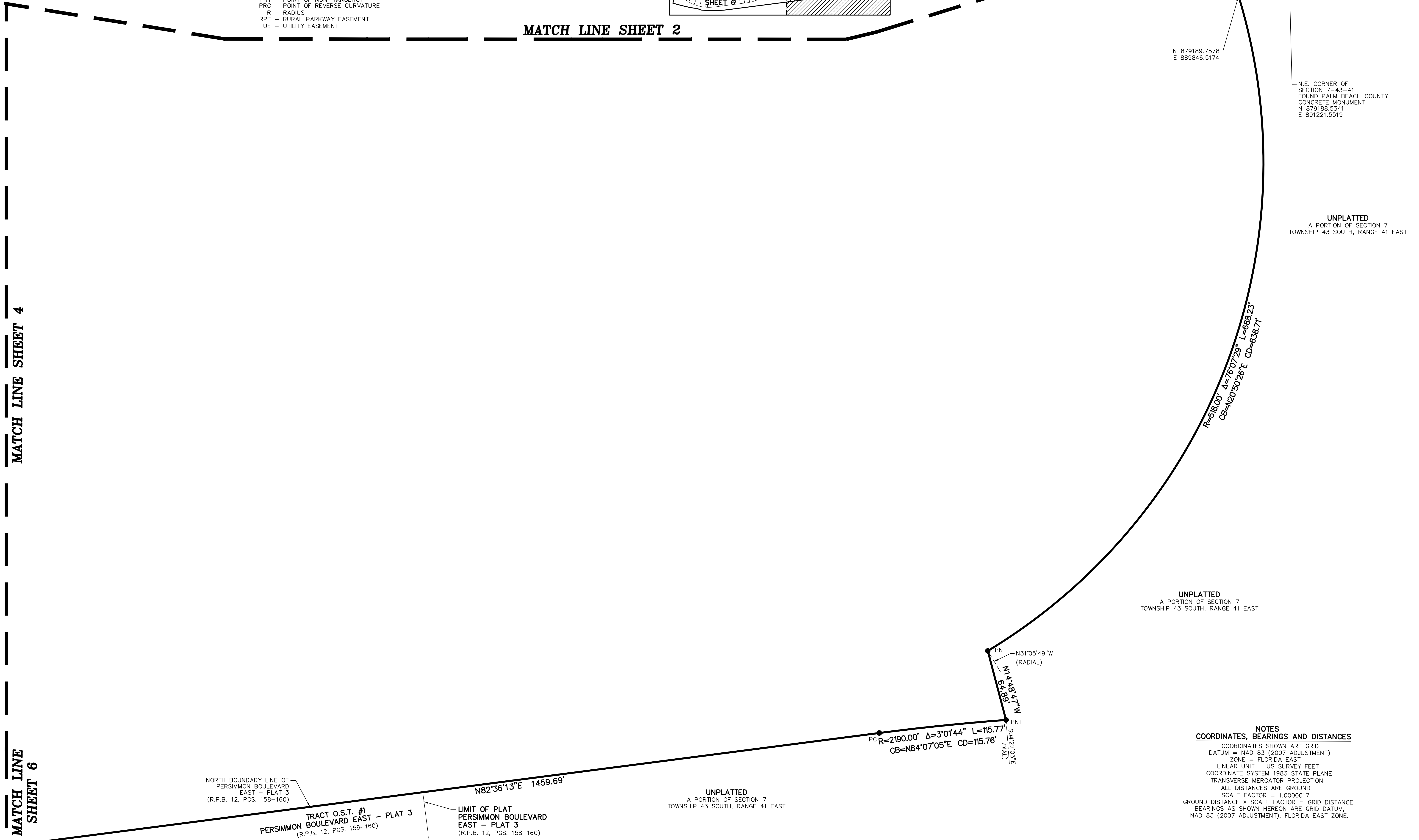
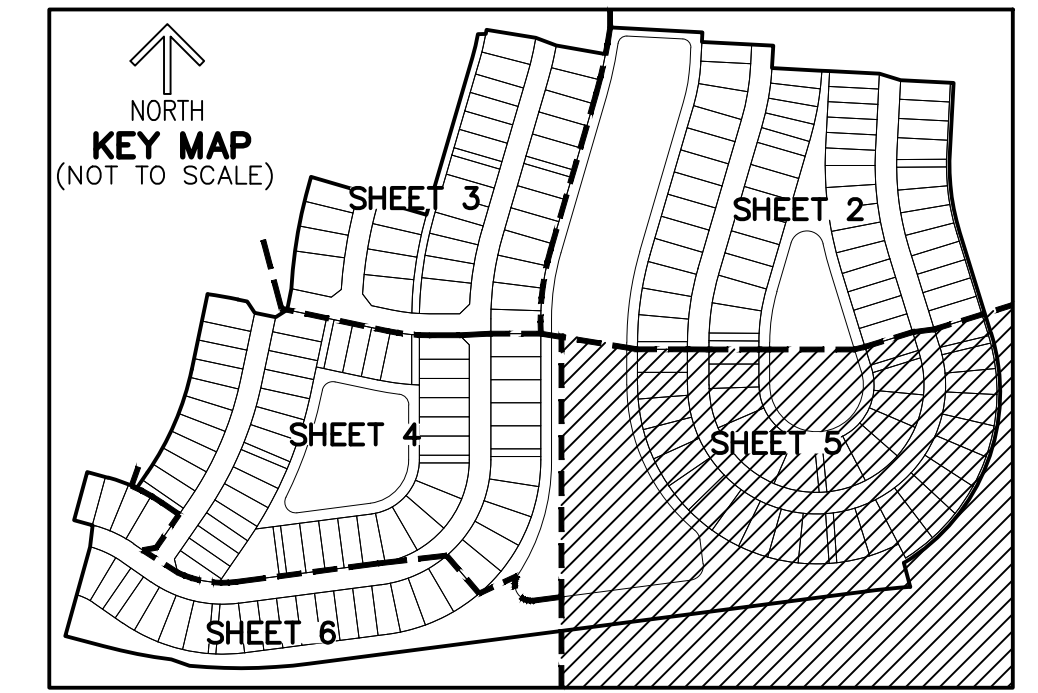
**BOUNDARY SURVEY 6 AND 7  
A PORTION OF SECTIONS 6 AND 7  
TOWNSHIP 43 SOUTH, RANGE 41 EAST  
CITY OF WESTLAKE  
PALM BEACH COUNTY, FLORIDA**

DATE 10/15/2021  
DRAWN BY AS  
F.B./ PG. ELEC  
SCALE AS SHOWN

JOB # 8272-5  
SHT. NO.  
**4**  
OF 6 SHEETS



- LEGEND/ABBREVIATIONS**
- C - CENTERLINE
  - Δ - DELTA (CENTRAL ANGLE)
  - CB - CHORD BEARING
  - CD - CHORD DISTANCE
  - DE - DRAINAGE EASEMENT
  - E - EASTING
  - (WHEN USED WITH COORDINATES)
  - N - NORTHING
  - (WHEN USED WITH COORDINATES)
  - L - ARC LENGTH
  - LMAE - LAKE MAINTENANCE ACCESS EASEMENT
  - LAE - LIMITED ACCESS EASEMENT
  - LB - LICENSED BUSINESS
  - (R) - RADIAL LINE
  - O.S.T./OST - OPEN SPACE TRACT
  - PC - POINT OF CURVATURE
  - PT - POINT OF TANGENCY
  - PNT - POINT OF NON-TANGENCY
  - PRC - POINT OF REVERSE CURVATURE
  - R - RADIUS
  - RPE - RURAL PARKWAY EASEMENT
  - UE - UTILITY EASEMENT
  - 6-43-41 - SECTION 6, TOWNSHIP 43 SOUTH, RANGE 41 EAST
  - P.B. - PLAT BOOK
  - R.P.B. - ROAD PLAT BOOK
  - PG./PGS. - PAGE/PAGES
  - NAD - NORTH AMERICAN DATUM
  - - SET PERMANENT CONTROL POINT NAIL AND DISK STAMPED "C&W LB 3591"
  - - SET PERMANENT REFERENCE MONUMENT SET 5/8" IRON ROD WITH CAP STAMPED "C&W LB 3591"
  - - FOUND PERMANENT REFERENCE MONUMENT 4"x 4"x 24" CONCRETE MONUMENT WITH DISK STAMPED "PRM LB 3591"



N 879189.7578  
E 889846.5174

N.E. CORNER OF SECTION 7-43-41 FOUND PALM BEACH COUNTY CONCRETE MONUMENT N 879186.5341 E 891221.5519

UNPLATTED A PORTION OF SECTION 7 TOWNSHIP 43 SOUTH, RANGE 41 EAST

UNPLATTED A PORTION OF SECTION 7 TOWNSHIP 43 SOUTH, RANGE 41 EAST

UNPLATTED A PORTION OF SECTION 7 TOWNSHIP 43 SOUTH, RANGE 41 EAST

NORTH BOUNDARY LINE OF PERSIMMON BOULEVARD EAST - PLAT 3 (R.P.B. 12, PGS. 158-160)

TRACT O.S.T. #1 PERSIMMON BOULEVARD EAST - PLAT 3 (R.P.B. 12, PGS. 158-160)

LIMIT OF PLAT PERSIMMON BOULEVARD EAST - PLAT 3 (R.P.B. 12, PGS. 158-160)

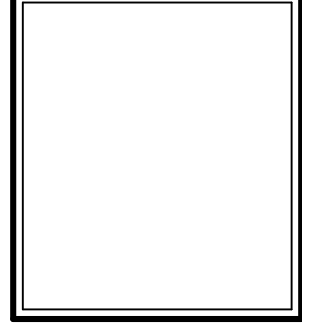
**NOTES**  
**COORDINATES, BEARINGS AND DISTANCES**  
 COORDINATES SHOWN ARE GRID  
 DATUM = NAD 83 (2007 ADJUSTMENT)  
 ZONE = FLORIDA EAST  
 LINEAR UNIT = US SURVEY FEET  
 COORDINATE SYSTEM 1983 STATE PLANE  
 TRANSVERSE MERCATOR PROJECTION  
 ALL DISTANCES ARE GROUND  
 SCALE FACTOR = 1.0000017  
 GROUND DISTANCE X SCALE FACTOR = GRID DISTANCE  
 BEARINGS AS SHOWN HEREON ARE GRID DATUM,  
 NAD 83 (2007 ADJUSTMENT), FLORIDA EAST ZONE.

NO.	REVISIONS	DATE	BY

**CAULFIELD & WHEELER, INC.**  
 CIVIL ENGINEERING - LAND PLANNING  
 LANDSCAPE ARCHITECTURE - SURVEYING  
 7900 GLADES ROAD - SUITE 100  
 BOCA RATON, FLORIDA 33434  
 PHONE (561) 392-1991 / FAX (561) 750-4452

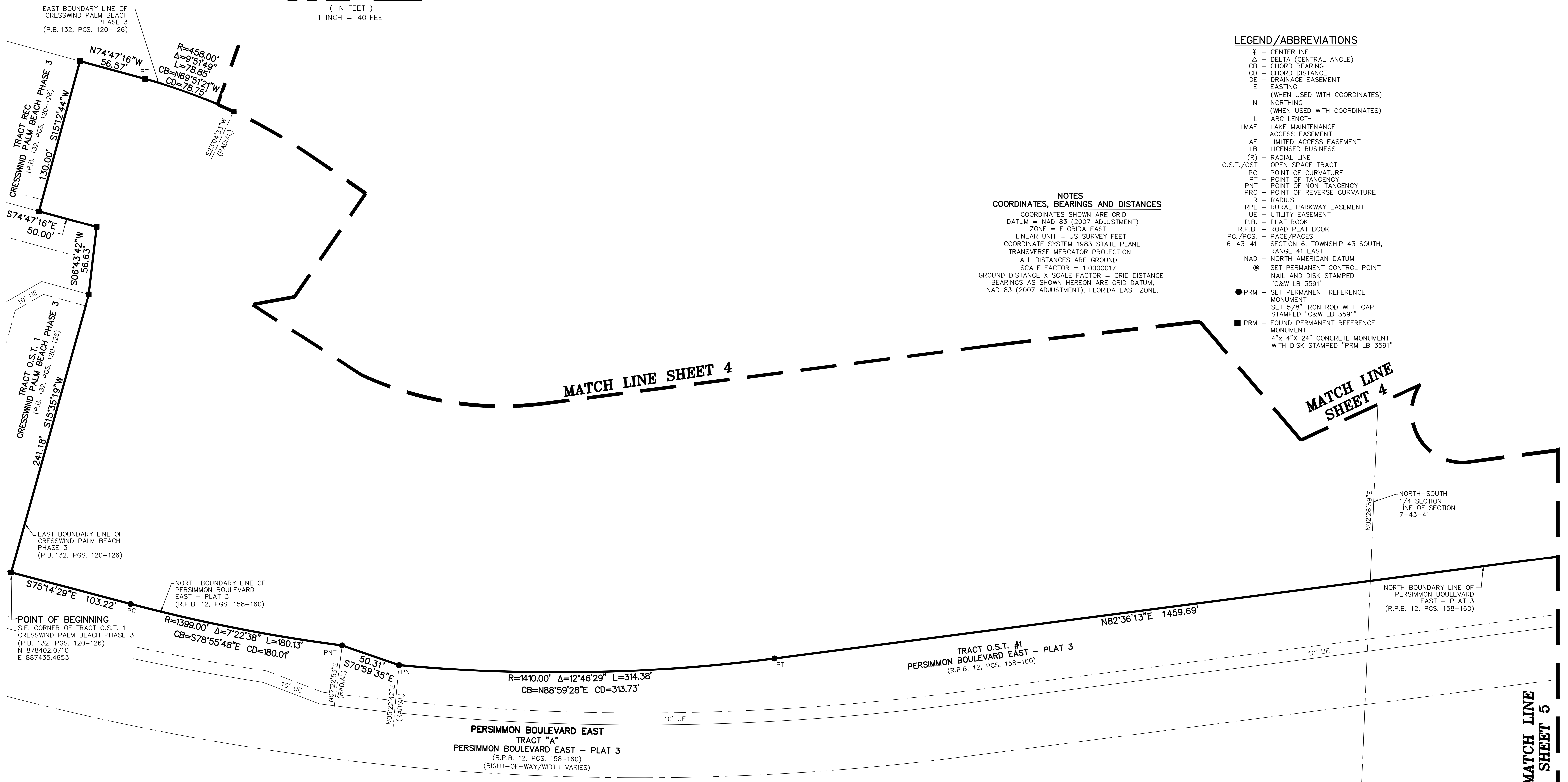
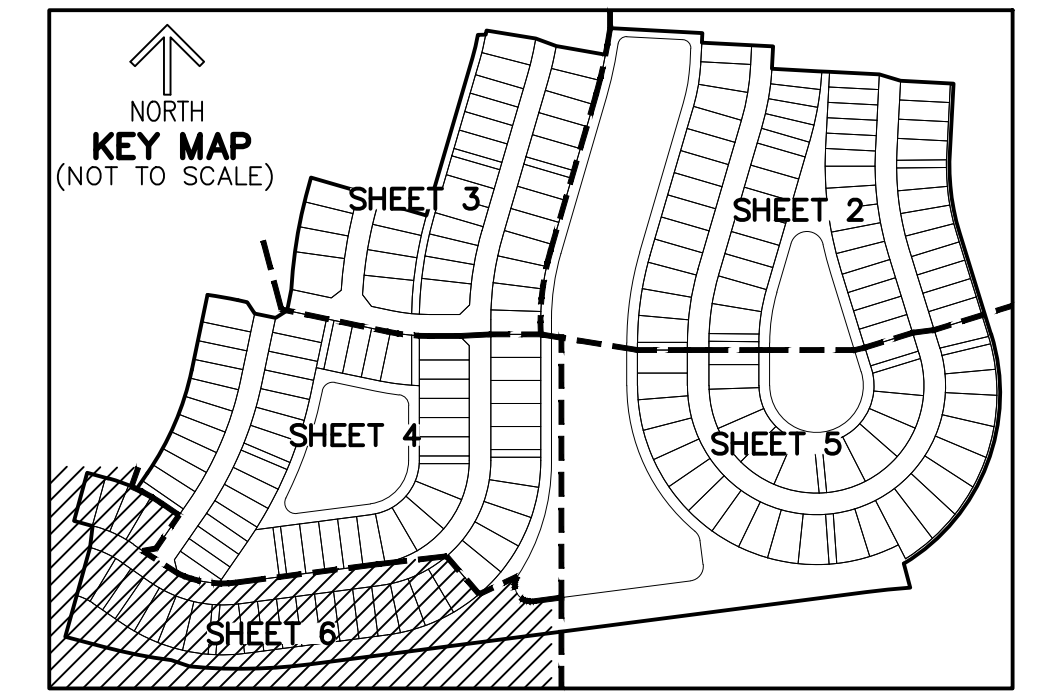
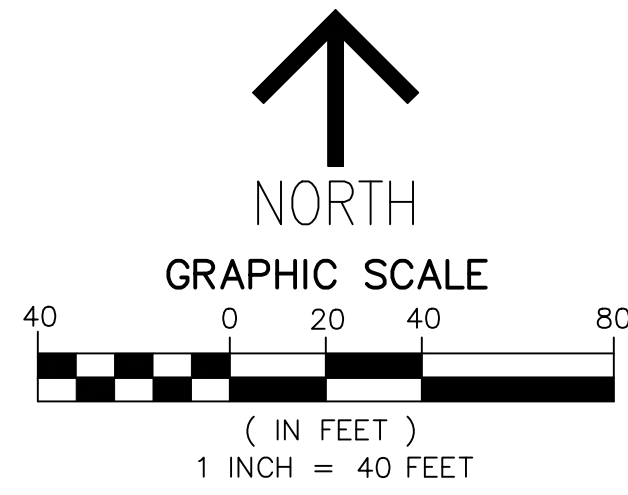
**BOUNDARY SURVEY AND 7**  
**A PORTION OF SECTIONS 6 AND 7**  
**TOWNSHIP 43 SOUTH, RANGE 41 EAST**  
**CITY OF WESTLAKE**  
**PALM BEACH COUNTY, FLORIDA**

DATE 10/15/2021  
 DRAWN BY AS  
 F.B./ PG. ELEC  
 SCALE AS SHOWN



JOB # 8272-5  
 SHT. NO.  
**5**  
 OF 6 SHEETS

TRACT W-9  
CRESSWIND PALM BEACH PHASE 3  
(P.B. 132, PGS. 120-126)



**NOTES**  
**COORDINATES, BEARINGS AND DISTANCES**  
COORDINATES SHOWN ARE GRID  
DATUM = NAD 83 (2007 ADJUSTMENT)  
ZONE = FLORIDA EAST  
LINEAR UNIT = US SURVEY FEET  
COORDINATE SYSTEM 1983 STATE PLANE  
TRANSVERSE MERCATOR PROJECTION  
ALL DISTANCES ARE GROUND  
SCALE FACTOR = 1.0000017  
GROUND DISTANCE X SCALE FACTOR = GRID DISTANCE  
BEARINGS AS SHOWN HEREON ARE GRID DATUM,  
NAD 83 (2007 ADJUSTMENT), FLORIDA EAST ZONE.

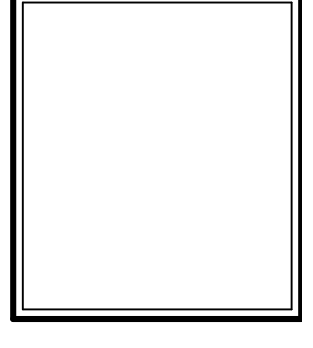
- LEGEND/ABBREVIATIONS**
- CL - CENTERLINE
  - Δ - DELTA (CENTRAL ANGLE)
  - CB - CHORD BEARING
  - CD - CHORD DISTANCE
  - DE - DRAINAGE EASEMENT
  - F - EASTING  
(WHEN USED WITH COORDINATES)
  - N - NORTHING  
(WHEN USED WITH COORDINATES)
  - L - ARC LENGTH
  - LMAE - LAKE MAINTENANCE ACCESS EASEMENT
  - LAE - LIMITED ACCESS EASEMENT
  - LB - LICENSED BUSINESS
  - (R) - RADIAL LINE
  - O.S.T./OST - OPEN SPACE TRACT
  - PC - POINT OF CURVATURE
  - PT - POINT OF TANGENCY
  - PNT - POINT OF NON-TANGENCY
  - PRC - POINT OF REVERSE CURVATURE
  - R - RADIUS
  - RPE - RURAL PARKWAY EASEMENT
  - UE - UTILITY EASEMENT
  - P.B. - PLAT BOOK
  - R.P.B. - ROAD PLAT BOOK
  - PG./PGS. - PAGE/PAGES
  - 6-43-41 - SECTION 6, TOWNSHIP 43 SOUTH, RANGE 41 EAST
  - NAD - NORTH AMERICAN DATUM
  - - SET PERMANENT CONTROL POINT NAIL AND DISK STAMPED "C&W LB 3591"
  - - SET PERMANENT REFERENCE MONUMENT SET 5/8" IRON ROD WITH CAP STAMPED "C&W LB 3591"
  - - FOUND PERMANENT REFERENCE MONUMENT 4" X 4" X 24" CONCRETE MONUMENT WITH DISK STAMPED "PRM LB 3591"

BY	
DATE	
REVISIONS	
FILE NAME	8272-PHASE3-SURVEY-1

**CAULFIELD & WHEELER, INC.**  
CIVIL ENGINEERING - LAND PLANNING  
LANDSCAPE ARCHITECTURE - SURVEYING  
7900 GLADES ROAD - SUITE 100  
BOCA RATON, FLORIDA 33434  
PHONE (561) 392-1991 / FAX (561) 750-4452

BOUNDARY SURVEY OF SECTIONS 6 AND 7  
A PORTION OF SECTIONS 6 AND 7  
TOWNSHIP 43 SOUTH, RANGE 41 EAST  
CITY OF WESTLAKE  
PALM BEACH COUNTY, FLORIDA

DATE 10/15/2021  
DRAWN BY AS  
F.B./ PG. ELEC  
SCALE AS SHOWN



JOB # 8272-5  
SHT.NO.  
**6**  
OF 6 SHEETS