



2020 Annual Report



Palm Beach County Sheriff's Office
District 18 - City of Westlake

Table of Contents

1. Cover Page
2. Table of Contents
3. Organizational Chart
4. Annual Numbers
5. Self Initiated Calls
6. Person Crime
7. Property Crime – Burglaries
8. Map of Burglaries
9. Property Crime – Stolen Vehicles and Vehicle Recoveries
10. Map of Stolen Vehicles and Recoveries
11. Property Crime – Theft and Vandalism
12. Map of Theft and Vandalism
13. Motor Vehicle Crashes and Hit and Runs
14. Traffic Citations, Warnings, and Stops
15. Arrests & NTAs
16. Questions

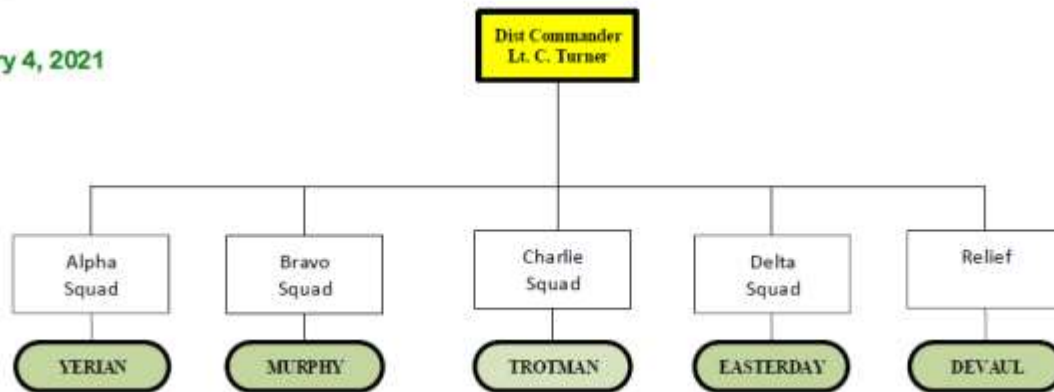
Organizational Chart



PBSO District 18 – Westlake Organizational Chart

Sworn: 5
TDY: 0

January 4, 2021



Annual Numbers

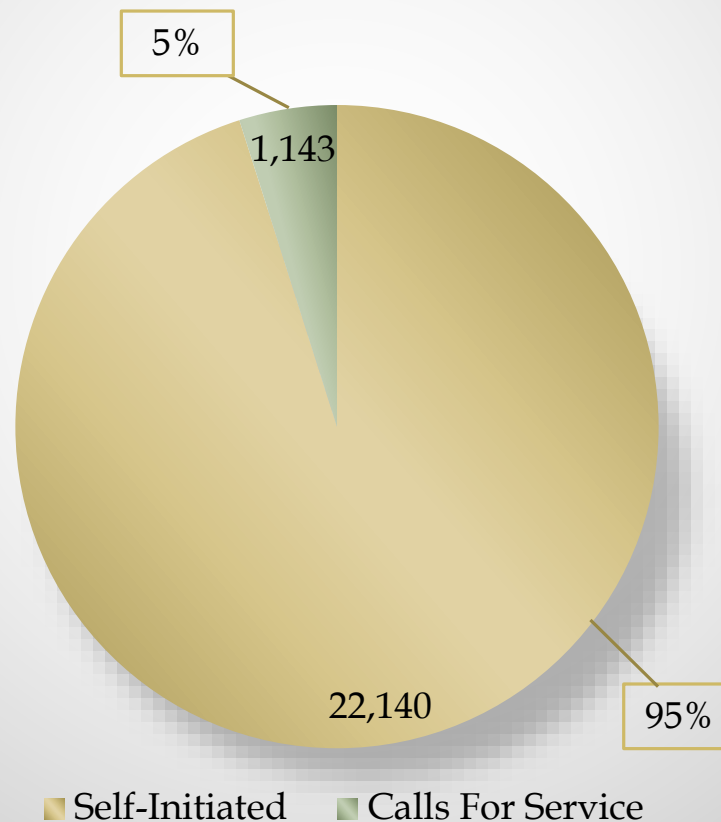
Crime		Annual				
		2019	2020		+/-	Percent Change
Person	Homicide	0	0	—	0	N/C
	Robbery	0	0	—	0	N/C
	Sexual Assault	0	2	▲	2	INC
	Shooting	1	0	▼	-1	-100%
	Stabbing	0	0	—	0	N/C
Property	Burglary Business	1	0	▼	-1	-100%
	Burglary Construction	2	3	▲	1	50%
	Burglary Residential	0	0	—	0	N/C
	Burglary Vehicle	0	0	—	0	N/C
	Larceny	0	6	▲	6	INC
	Stolen Vehicle	1	3	▲	2	200%
	Stolen Vehicle Recovery	0	0	—	0	N/C
	Vandalism	0	2	▲	2	INC
Statistics	Arrests and NTAs	10	17	▲	7	70%
	Traffic Crashes (3's & 4's)	13	43	▲	30	231%
	Total CAD Incidents	5,515	23,283	▲	17768	322%
	Traffic Stop (1050)	197	678	▲	481	244%
	Business/Residence (1061)	4,990	21,462	▲	16472	330%
	CAD Inc.(less 1050 & 1061)	328	1,143	▲	815	248%
FIR	Total FIR's	50	116	▼	66	132 %
	Gang FIR's	0	0	—	0	N/C
	Truant FIR's	0	0	—	0	N/C
	FIR's (Less truant & gang)	50	116	▼	66	132 %

The information in this report is based on beats within the district. Miscellaneous incident Type codes: PPI, RED, REPO, RMS, TEST and WEL are excluded from the total CAD incidents. FIR data is collected from the FIR track application. This report is dynamic and subject to change.

Self-Initiated Calls

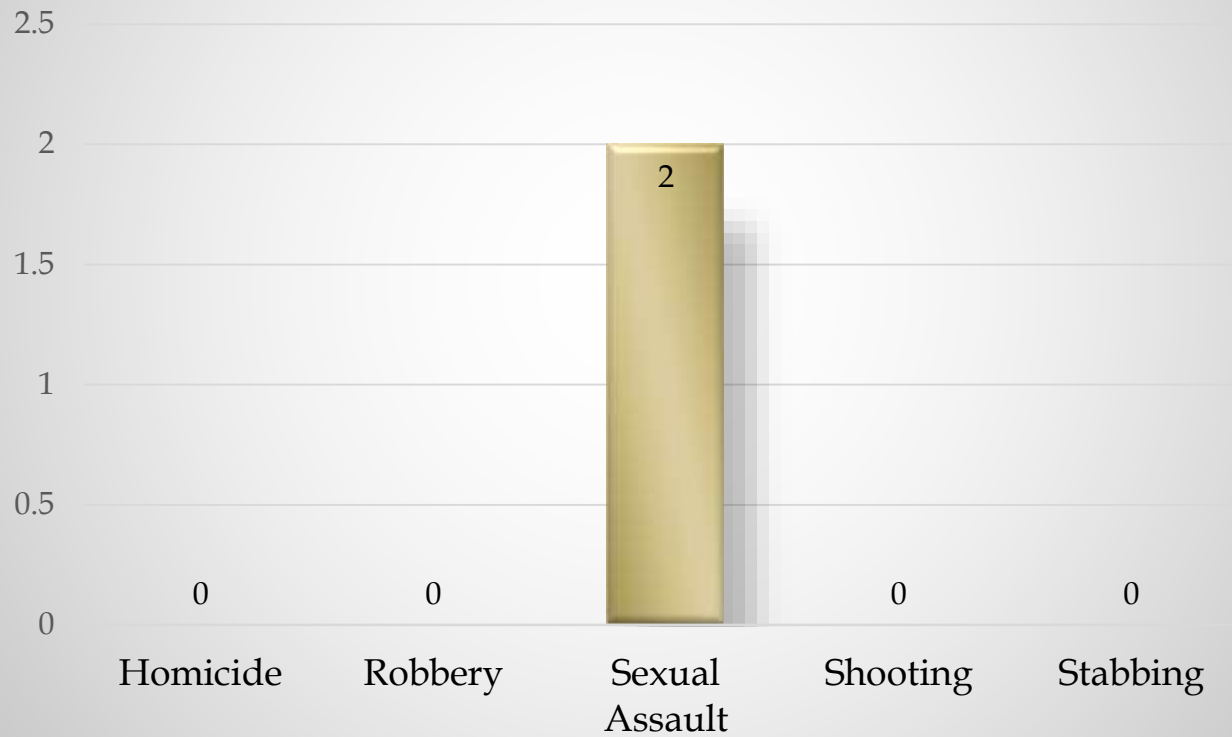
Data Source: Motorola P1

Self-Initiated Calls equal the total number of traffic stops and business/residence checks. Calls for Service includes all other calls.



Person Crime

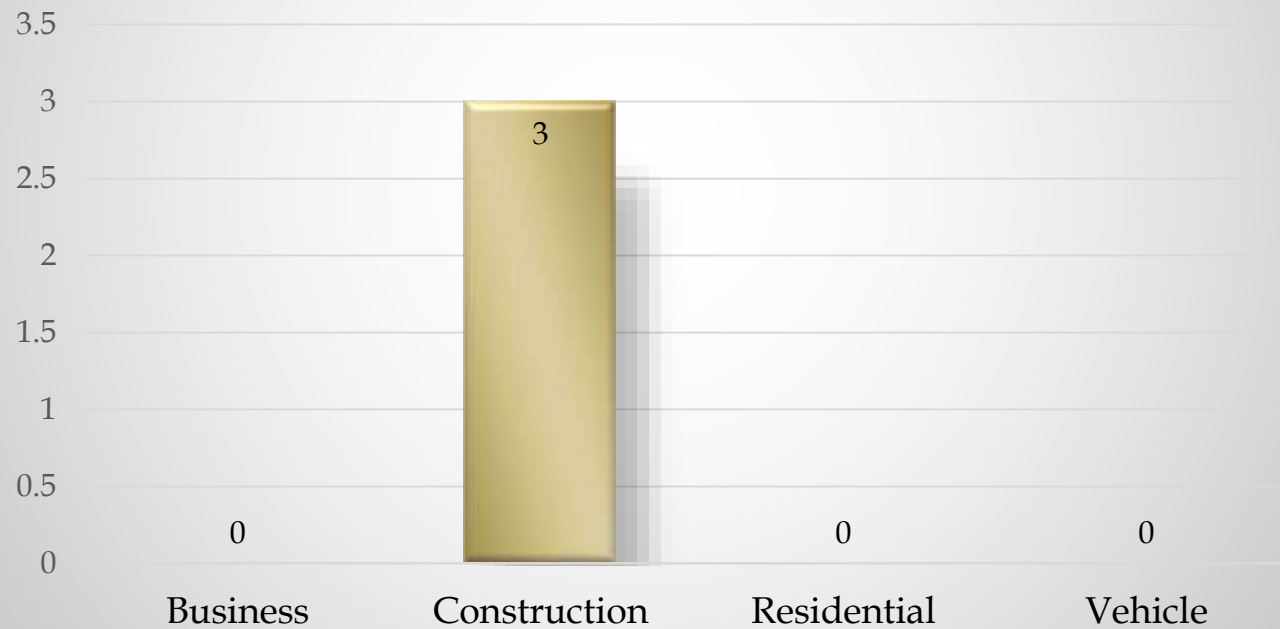
Data Source: Motorola P1



Property Crime

Data Source: Motorola P1

Burglaries



Map of Burglaries

Data Source: Crimeview Dashboard



Property Crime

Data Source: Motorola P1

Stolen Vehicles and Recoveries



Map of Stolen Vehicles and Recoveries

Data Source: Crimeview Dashboard



Property Crime

Data Source: Motorola P1

Theft and Vandalism



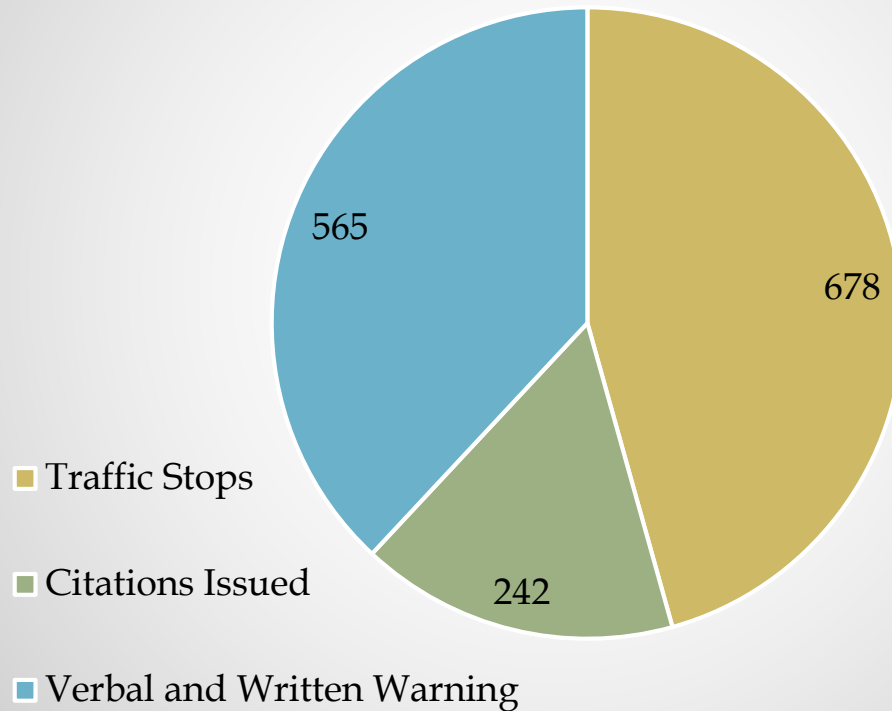
Motor Vehicle Crashes and Hit and Runs

Data Source: Motorola P1



Traffic Citations, Warnings, and Stops

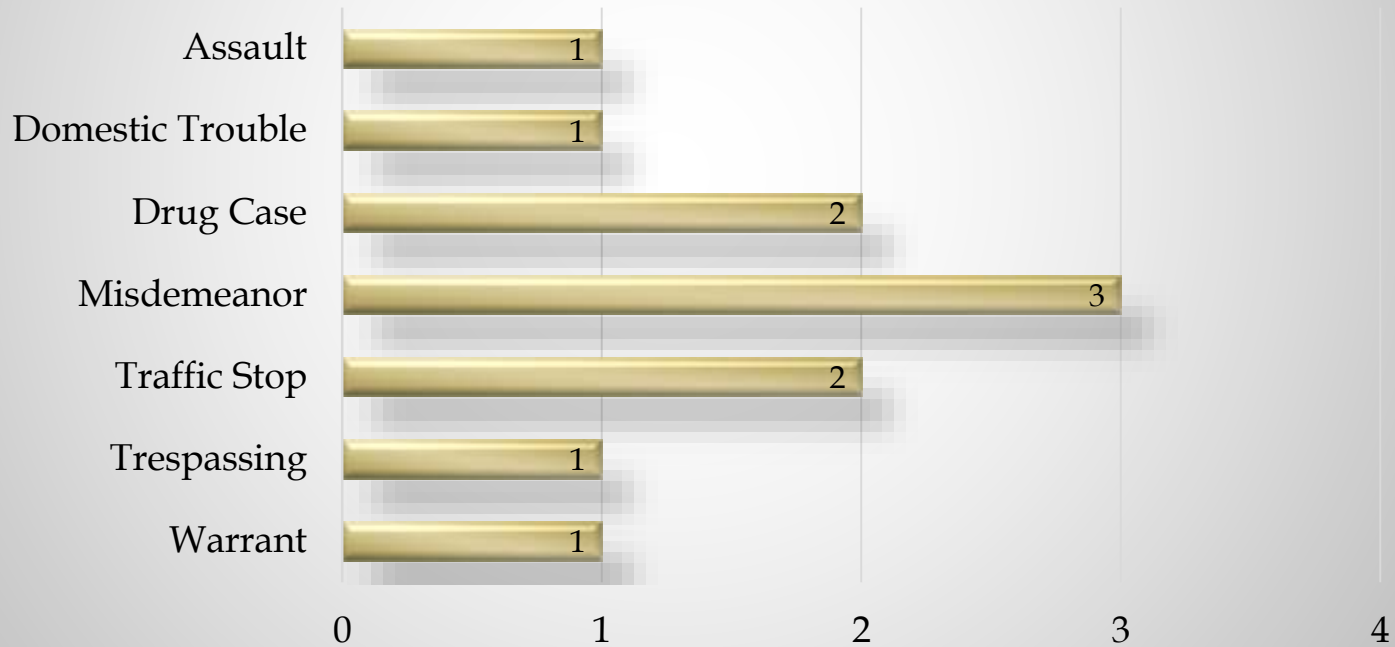
Data Source: Motorola P1



Arrests & NTAs

Data Source: PALMS

Arrest & NTA total: 11



Questions



PowerPoint and research completed by:
Criminal Intelligence Analyst Allison Frankiewicz
Crime Analysis Unit