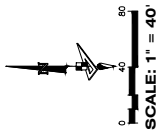


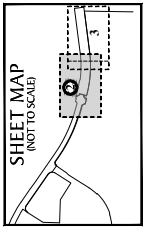


# PERSIMMON BOULEVARD EAST - PLAT 3

BEING IN PART A REPLAT OF OPEN SPACE TRACT #3, PERSIMMON BOULEVARD EAST-PLAT 2, PLAT BOOK 128, PAGES 16 THROUGH 19, INCLUSIVE, PUBLIC RECORDS OF PALM BEACH, FLORIDA, AND BEING A PORTION OF SECTION 7, TOWNSHIP 43 SOUTH, RANGE 41 EAST, CITY OF WESTLAKE, PALM BEACH COUNTY, FLORIDA.

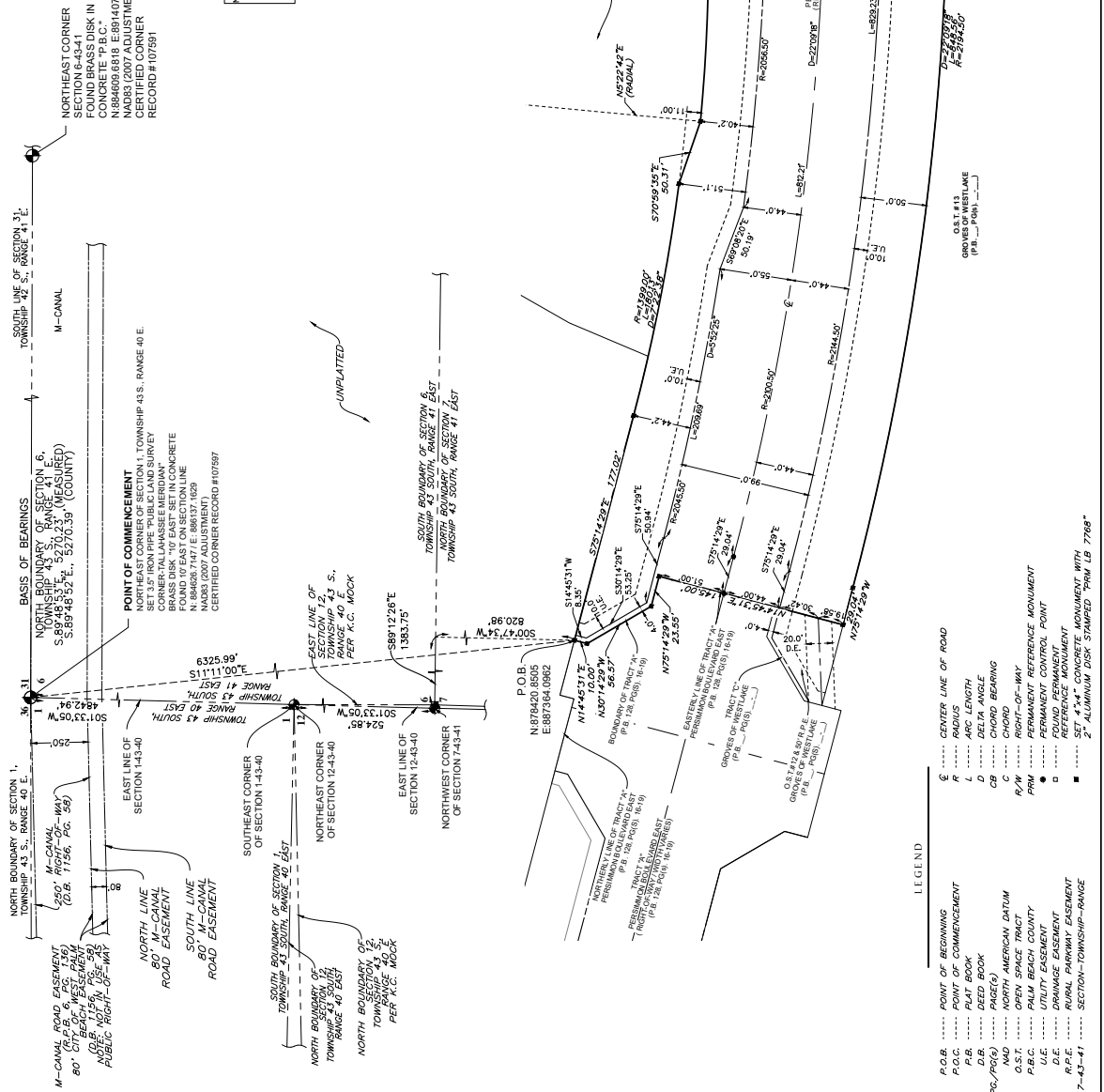


COORDINATES SHOWN HEREON ARE  
 DATUM = NAD83 2007 ADJUSTMENT  
 ZONE = FLORIDA EAST  
 PROJECTION = UTM  
 UNIT = METERS  
 EARTH MODEL = WGS 84  
 SCALE FACTOR = TRANSVERSE MERCATOR  
 PLAT BEARING = GRID BEARING  
 ALL TEST TO SECTION CORNERS AND QUARTER CORNERS  
 ARE GENERATED FROM MEASURED VALUES



**NOTICE:** THIS PLAT, AS RECORDED IN ITS GRAPHIC FORM, IS THE ORIGINAL SURVEY RECORD. ANY REPRODUCTION OF THIS PLAT, IN ANY MANNER, INCLUDING BUT NOT LIMITED TO PHOTOCOPYING, SCANNING, OR DIGITIZING, WITHOUT THE WRITTEN PERMISSION OF GEOPOINT SURVEYING, INC., IS STRICTLY PROHIBITED. ANY REPRODUCTION OF THIS PLAT THAT MAY BE FOUND IN THE PUBLIC RECORDS OF THIS COUNTY.

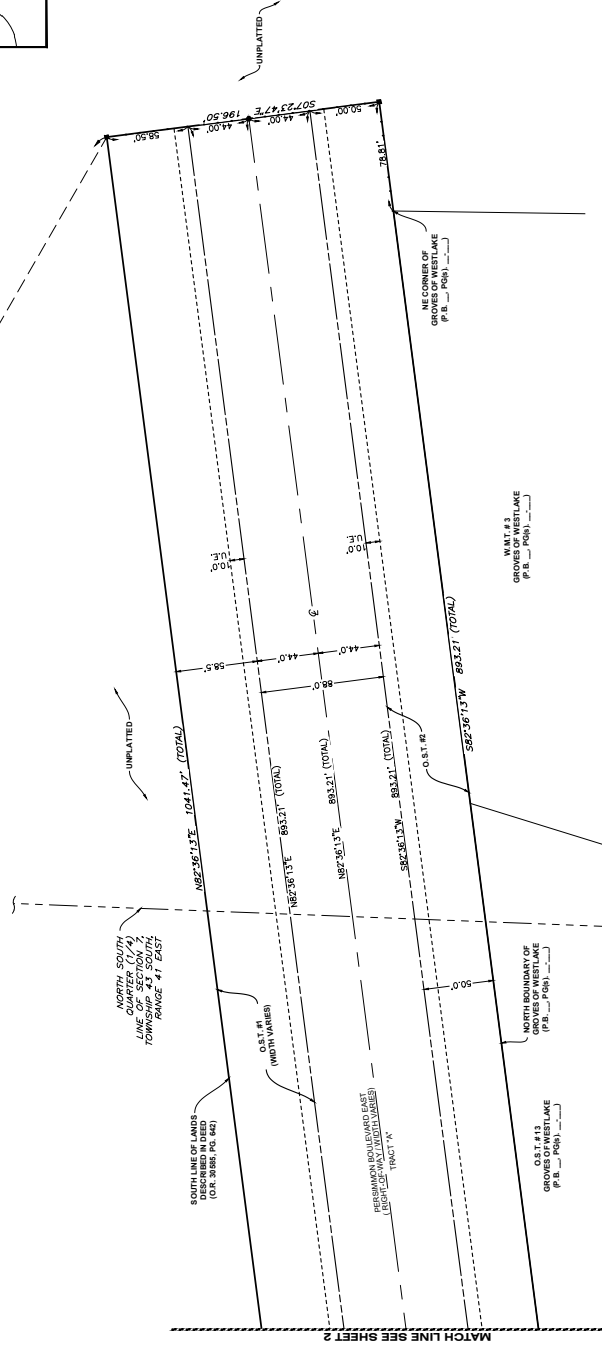
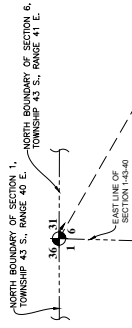
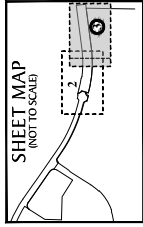
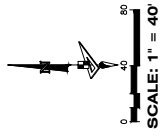
**BASIS OF BEARINGS**  
 BEARINGS SHOWN HEREON ARE BASED ON THE NORTH  
 SECTION 6, TOWNSHIP 43 SOUTH, RANGE 41 EAST HAVING A  
 GRID BEARING OF S89°40'31\"/>



**LEGEND**

- P.O.B. .... POINT OF BEGINNING
- P.O.C. .... POINT OF COMMENCEMENT
- P.B. .... PLAT BOOK
- D.B. .... DEED BOOK
- PG./P. .... PAGE/PLAT
- NAD .... NORTH AMERICAN DATUM
- R/W .... RIGHT-OF-WAY
- P.B.C. .... PALM BEACH COUNTY
- U.E. .... UTILITY EASEMENT
- P.L.E. .... PUBLIC USE EASEMENT
- P.L. .... PLAT
- 7-43-41 .... SECTION-TOWNSHIP-RANGE

**PERSIMMON BOULEVARD EAST - PLAT 3**  
 BEING IN PART A REPLAT OF OPEN SPACE TRACT #3, PERSIMMON BOULEVARD EAST-PLAT 2,  
 PLAT BOOK 128, PAGES 16 THROUGH 19, INCLUSIVE, PUBLIC RECORDS OF PALM BEACH, FLORIDA,  
 AND BEING A PORTION OF SECTION 7, TOWNSHIP 43 SOUTH, RANGE 41 EAST, CITY OF WESTLAKE,  
 PALM BEACH COUNTY, FLORIDA,



**LEGEND**

- P.O.B. .... POINT OF BEGINNING
- P.O.C. .... POINT OF COMMENCEMENT
- R ..... RADIUS
- ..... ROAD CENTER LINE OF ROAD
- D ..... DEED BOOK
- ..... DELTA ANGLE
- CB ..... CHORD BEARING
- C ..... CHORD
- R/W ..... RIGHT-OF-WAY
- ..... PERMANENT REFERENCE MONUMENT
- P.A.M. .... PALM BEACH COUNTY ADJUSTED POINT
- ..... FOUND PERMANENT REFERENCE MONUMENT
- ..... SET 4.74\"/>