

Cresswind Palm Beach

Pod P-1 Phase II Plat

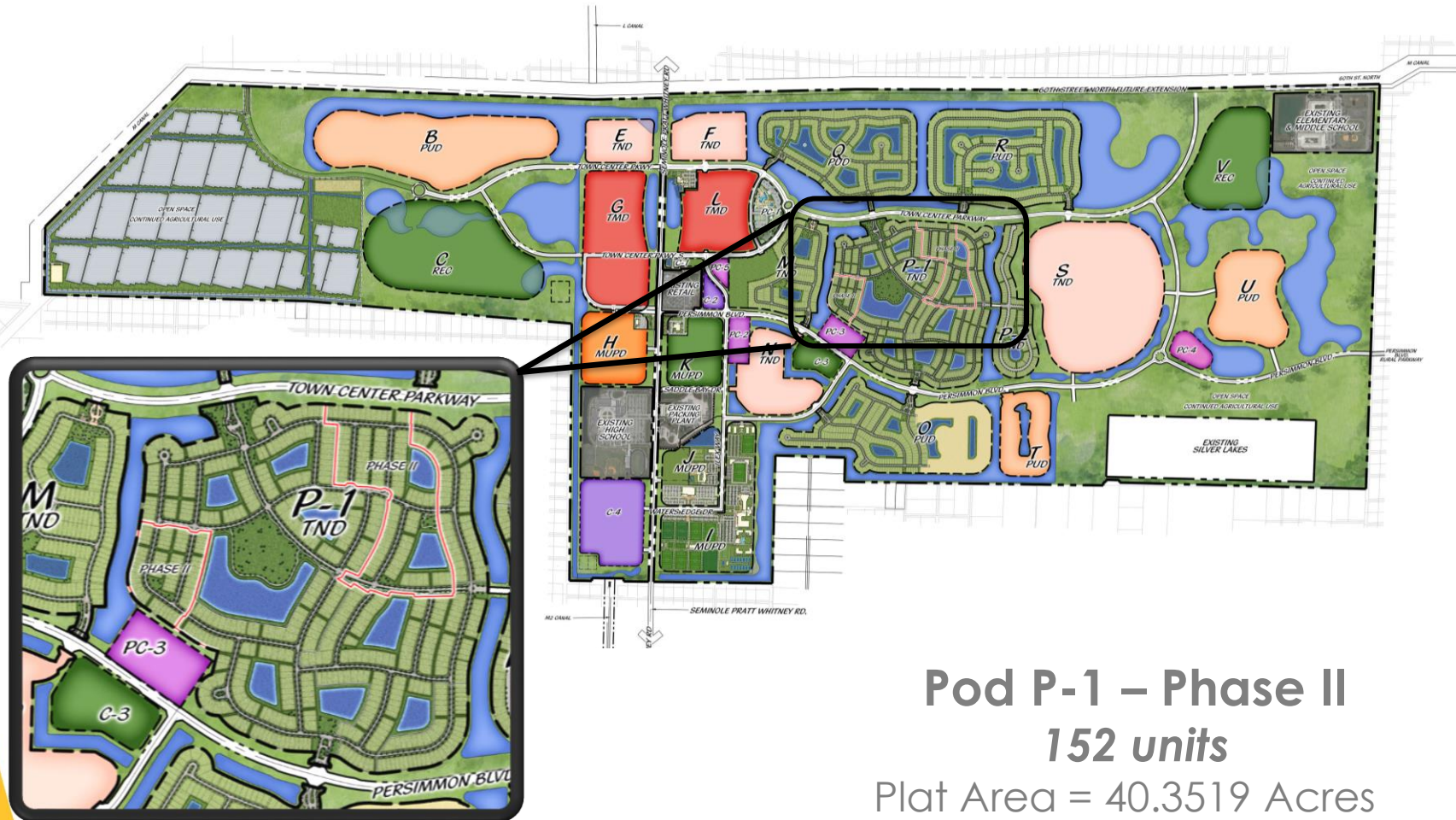


May 11, 2020



Cresswind Palm Beach

Pod P-1 Phase II Plat



Pod P-1 – Phase II
152 units
Plat Area = 40.3519 Acres



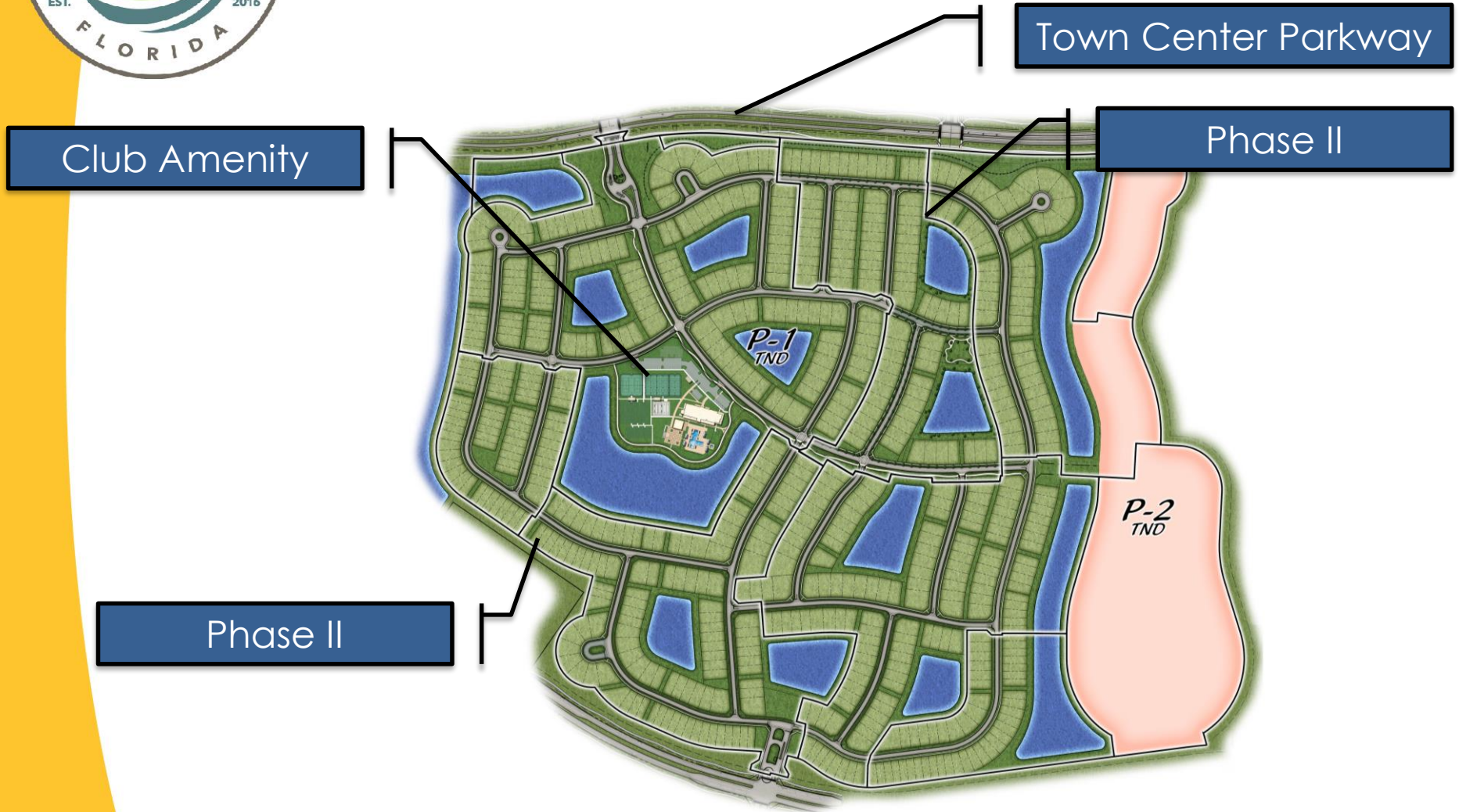
Pod P-1 Cresswind Palm Beach

Phase II Plat-Tabular Data

Plat Boundary Area:	40.3519 Acres
Pod O Boundary Area:	42.3649 Acres
Land Use:	Residential R- 2
Zoning:	R-2
Dwelling Units	152 (Future total 800)
Density (Net)	3.77 DU/Ac.
Total Units Phase I & II	298



Cresswind Palm Beach Site Plan



Club Amenity

Town Center Parkway

Phase II

Phase II

Phase I :277 Homes



Lot Distribution



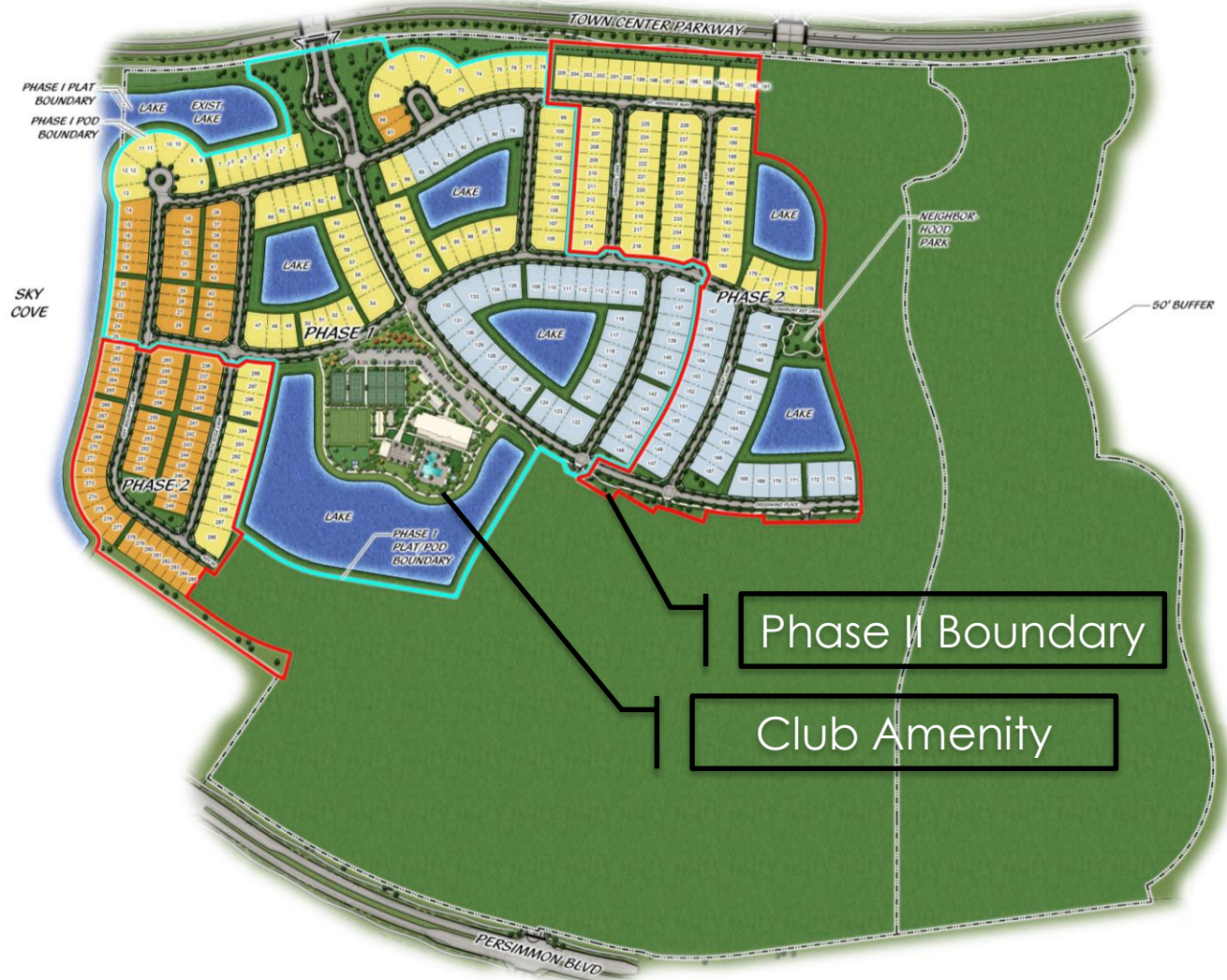
LOT SIZE	PHASE 1	PHASE 2	FUTURE PHASES
40' WIDE	35	50	TBD
50' WIDE	66	74	TBD
60' WIDE	45	28	TBD
TOTAL	146	152	804

POD P



Club Amenity

For Information Only





Club Amenity

For Information Only





Club Amenity

For Information Only

WESTLAKE - POD P CLUBHOUSE
Westlake, Florida





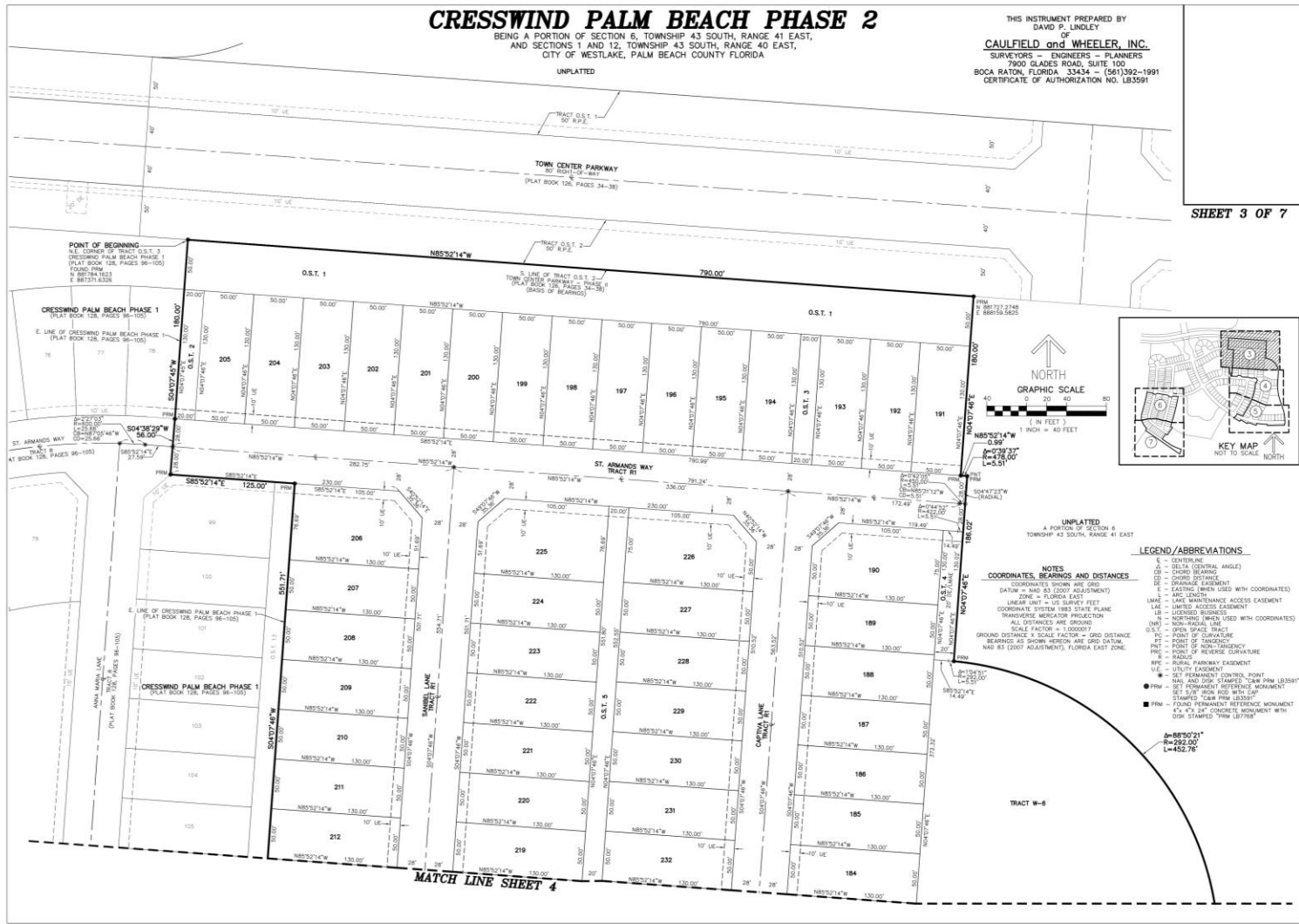
Plat - Detail Sheets

CRESSWIND PALM BEACH PHASE 2

BEING A PORTION OF SECTION 6, TOWNSHIP 43 SOUTH, RANGE 40 EAST,
AND SECTIONS 1 AND 12, TOWNSHIP 43 SOUTH, RANGE 40 EAST,
CITY OF WESTLAKE, PALM BEACH COUNTY FLORIDA

THIS INSTRUMENT PREPARED BY
DAVID P. LINDLEY
OF
CAULFIELD and WHEELER, INC.
SURVEYORS - ENGINEERS - PLANNERS
7800 GLADES ROAD, SUITE 100
BOCA RATON, FLORIDA 33434 - (561)392-1991
CERTIFICATE OF AUTHORIZATION NO. LB3591

SHEET 3 OF 7



- UNPLATED
A PORTION OF SECTION 6
TOWNSHIP 43 SOUTH, RANGE 41 EAST
- LEGEND / ABBREVIATIONS**
- CENTERLINE
 - DELTA (CENTRAL ANGLE)
 - CHORD BEARING
 - CHORD DISTANCE
 - EASEMENT
 - EASEMENT BEHIND LINES WITH COORDINATES
 - ARC LENGTH
 - LINE MAINTENANCE ACCESS EASEMENT
 - LIMITED ACCESS EASEMENT
 - LICENSED BUSINESS
 - RAILROAD BUSINESS
 - NON-RAILROAD BUSINESS
 - OPEN SPACE TRACT
 - POINT OF CURVATURE
 - POINT OF TANGENCY
 - POINT OF NON-TANGENCY
 - POINT OF RELEASE CURVATURE
 - RADIUS
 - RURAL PARKWAY EASEMENT
 - UTILITY EASEMENT
 - SET PERMANENT CONTROL POINT
 - NAME AND IRON STAMPED "C&W" FROM LB3591
 - SET 5/8" IRON ROD WITH CAP
 - STAMPED "C&W" FROM LB3591
 - FOUND PERMANENT REFERENCE MONUMENT
 - 4" x 4" CONCRETE MONUMENT WITH DISK STAMPED "PBM LB3788"
- NOTES**
- COORDINATES, BEARINGS AND DISTANCES
- COORDINATES SYSTEM ARE GRID
- DATEM = NAD 83 (2011 ADJUSTMENT)
- ZONE = FLORIDA EAST
- UNIT = FEET SURVEY FEET
- ALL DISTANCES ARE GROUND
- SCALE FACTOR = 1.000077
- GROUND DISTANCE X SCALE FACTOR = GRID DISTANCE
- BEARINGS AS SHOWN HEREON ARE GRID DATUM
- NAD 83 (2011 ADJUSTMENT), FLORIDA EAST ZONE.
- 0-88°50'21"
 0-292.00'
 L=452.76'



THANK YOU