

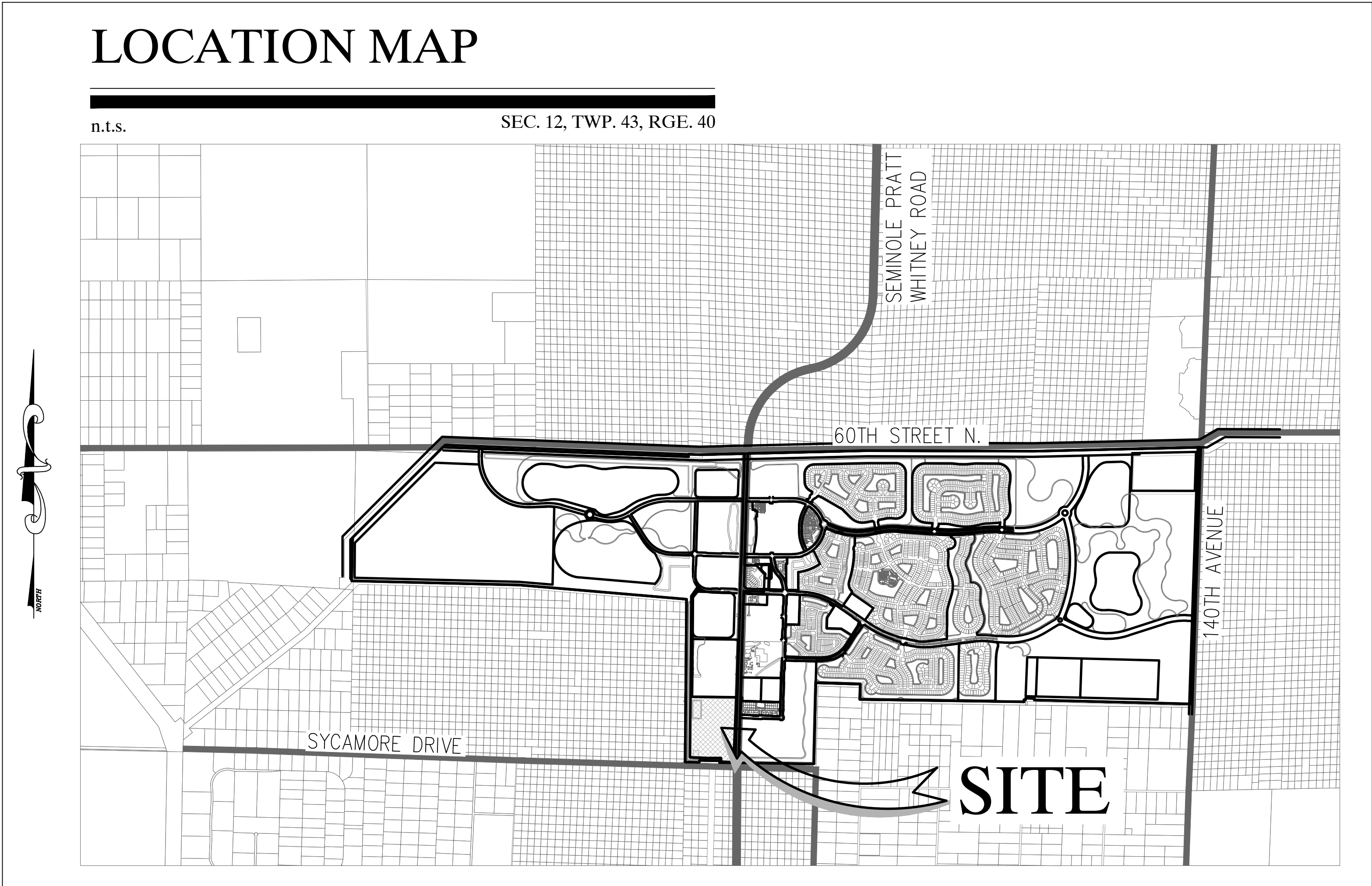
SEMINOLE IMPROVEMENT DISTRICT

Park Parcel C-4 Drainage Modifications

Westlake, Florida

REVISIONS	DATE	BY

CAULFIELD & WHEELER, INC.
 CIVIL ENGINEERING - LAND PLANNING
 LANDSCAPE ARCHITECTURE - SURVEYING
 7900 GLADES ROAD - SUITE 100
 BOCA RATON, FLORIDA 33434
 PHONE (561) 392-1991 / FAX (561) 750-1452

INDEX

01	Cover Page
02 - 03	Paving, Grading, & Drainage Plans
04 - 05	Paving, Grading, & Drainage Details
06	Pollution Prevention Plan

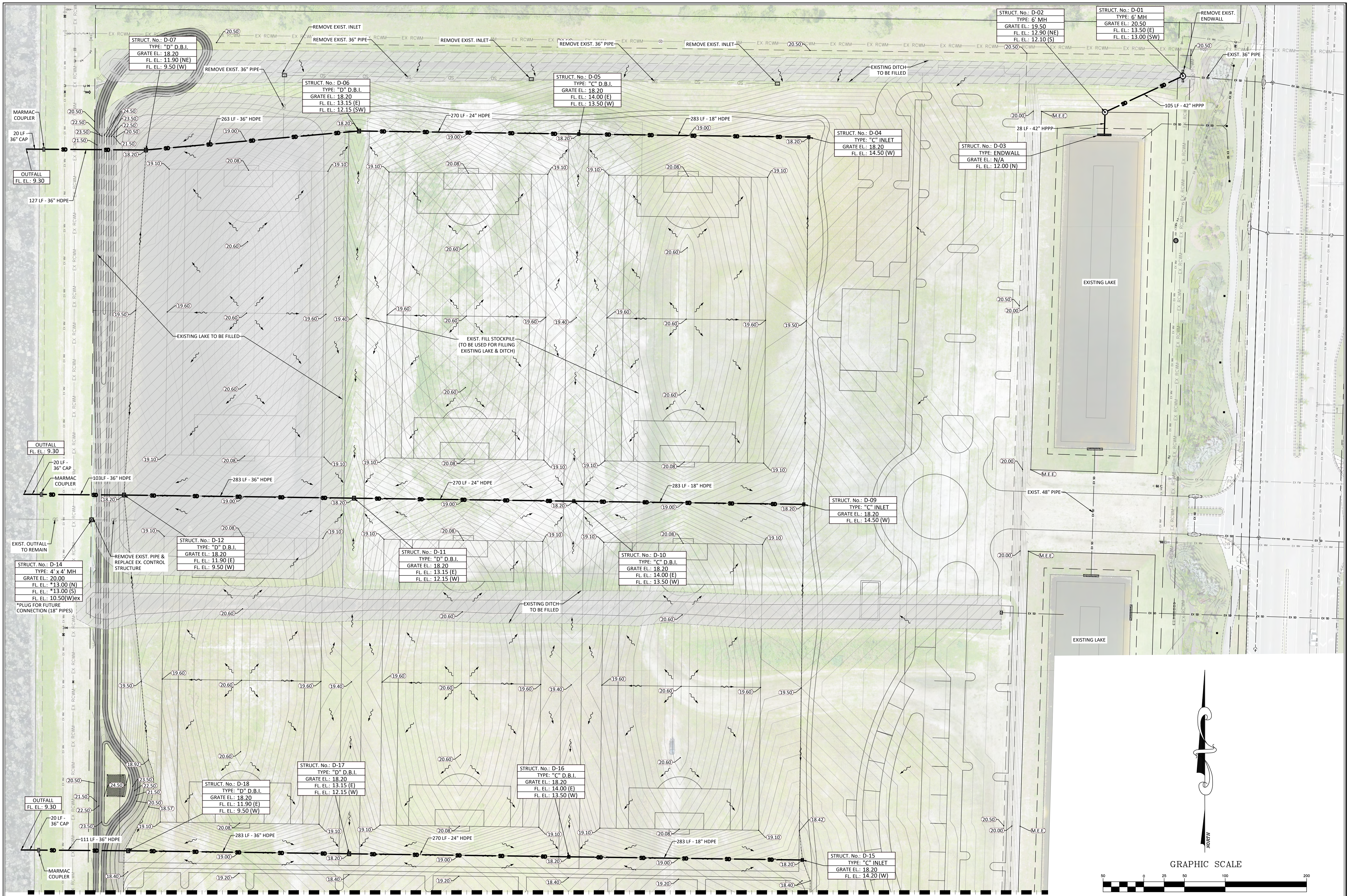
SEMINOLE IMPROVEMENT DISTRICT /
 WESTLAKE PARK PARCEL C-4
COVER SHEET
 WESTLAKE, FLORIDA

DATE	09/06/2023
DRAWN BY	RHT
F.B./ PG.	0000
SCALE	N/A

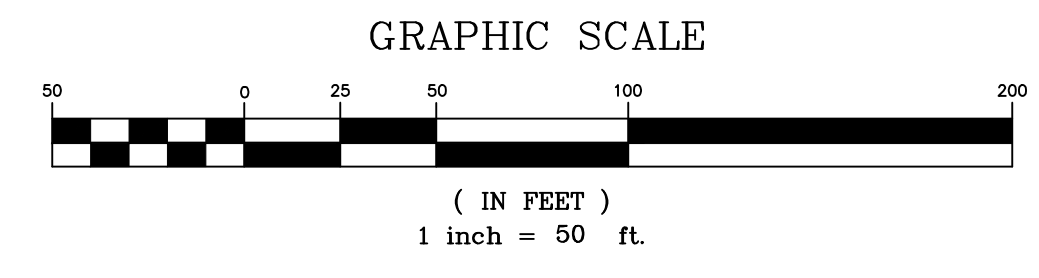
RYAN D. WHEELER
 PROFESSIONAL ENGINEER
 LICENSE NO. 71477
 STATE OF FLORIDA
 FOR THE FIRM -
 DATE May 13, 2024

FOR CONSTRUCTION
 05/13/2024

JOB # 8500
 SHT. NO.
01
 OF 06 SHEETS



MATCHLINE
(SHEET NO. 03)



DATE	01/17/2023
BY	RHT
REVISIONS	
FILE NAME	SD_Park_Drainage.dwg

CAULFIELD & WHEELER, INC.
 CIVIL ENGINEERING - LAND PLANNING
 LANDSCAPE ARCHITECTURE - SURVEYING
 7900 GLADES ROAD - SUITE 100
 BOCA RATON, FLORIDA 33434
 PHONE (561) 392-1991 / FAX (561) 750-1452



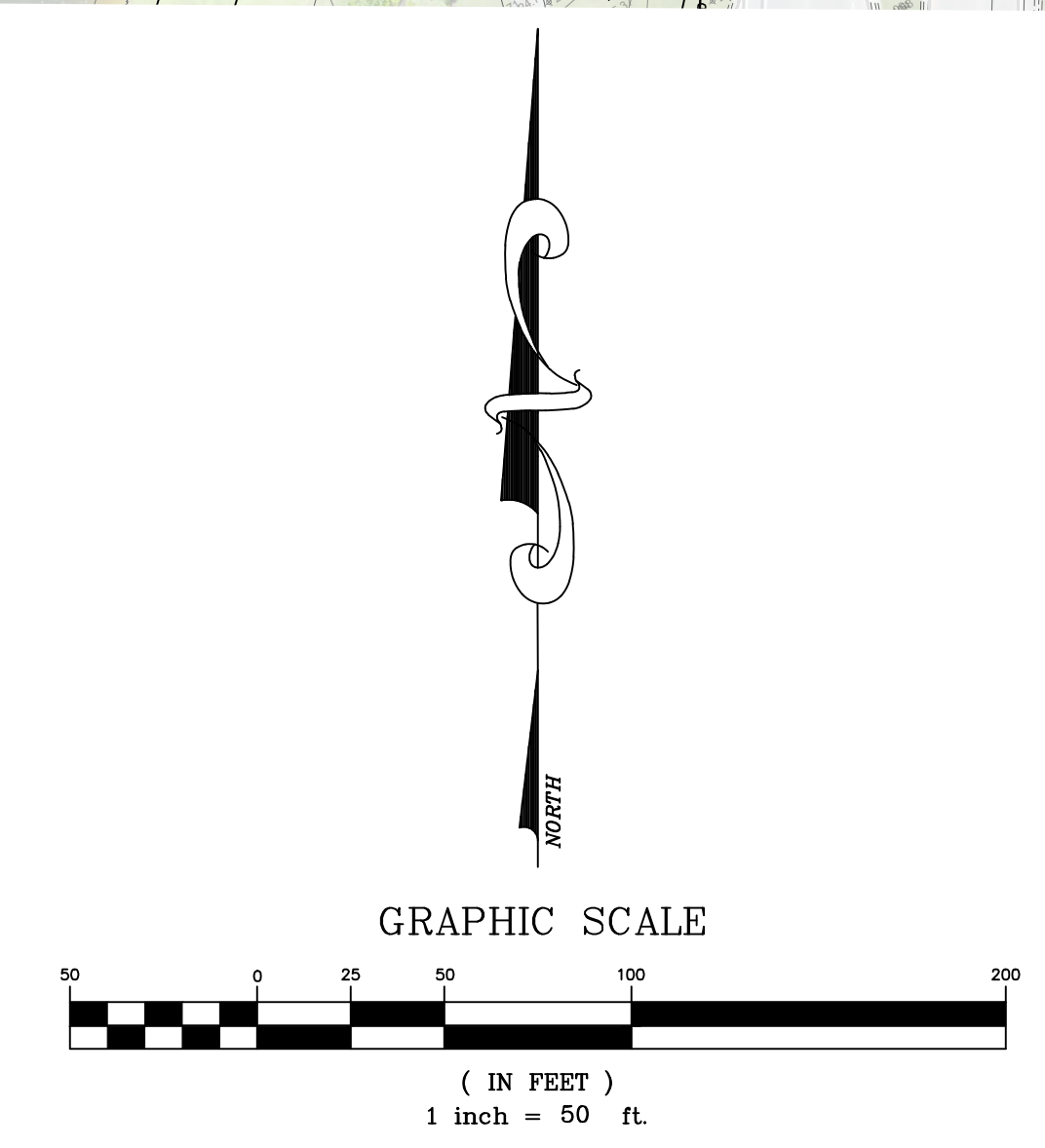
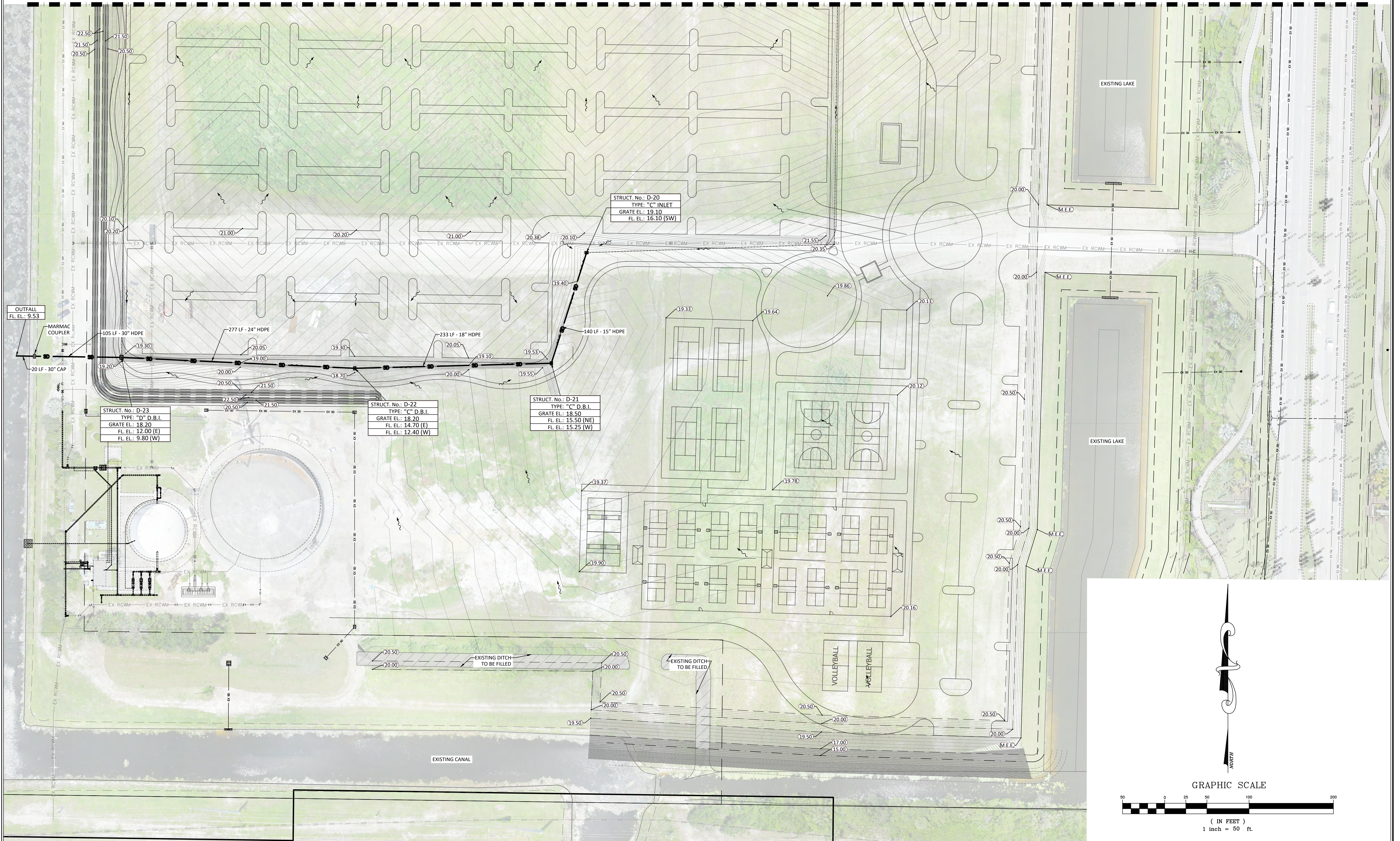
SEMINOLE IMPROVEMENT DISTRICT / WESTLAKE PARK PARCEL C-4
DRAINAGE IMPROVEMENTS
 WESTLAKE, FLORIDA

DATE	09/06/2023
DRAWN BY	RHT
F.B./ PG.	N/A
SCALE	1"=50'

RYAN D. WHEELER
 PROFESSIONAL ENGINEER
 LICENSE NO. 71477
 STATE OF FLORIDA
 = FOR THE FIRM =
 DATE: May 13, 2024

JOB #	8500
SHT. NO.	02
OF	06 SHEETS

MATCHLINE
(SHEET NO. 02)



FILE NAME:	SD_Perf_Drainage.dwg
REVISIONS:	
DATE:	01/17/2023
BY:	RHT

CAULFIELD & WHEELER, INC.
 CIVIL ENGINEERING - LAND PLANNING
 LANDSCAPE ARCHITECTURE - SURVEYING
 7900 GLADES ROAD - SUITE 100
 BOCA RATON, FLORIDA 33434
 PHONE (561) 392-1991 / FAX (561) 750-1452

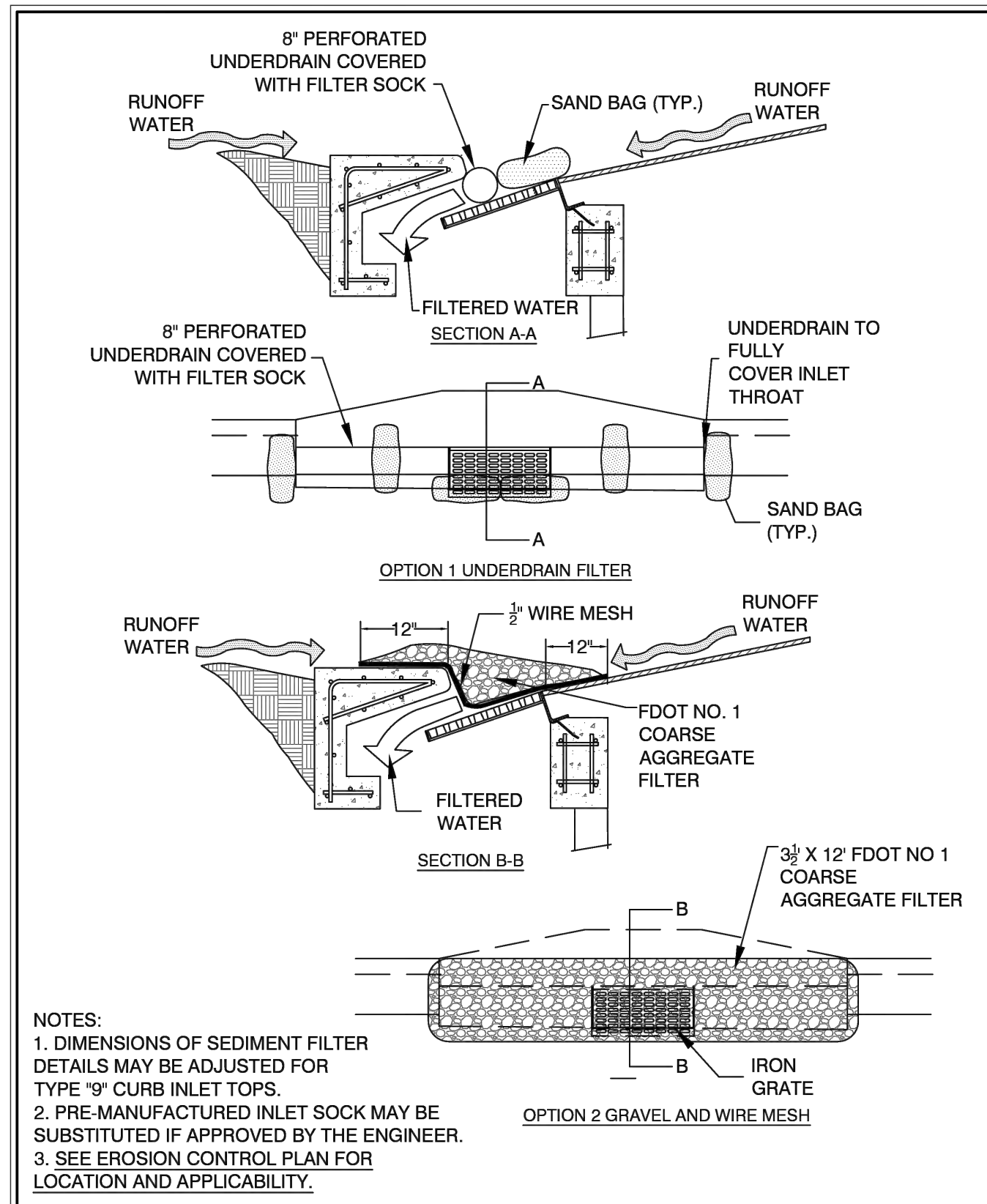


SEMINOLE IMPROVEMENT DISTRICT /
 WESTLAKE PARK PARCEL C-4
DRAINAGE IMPROVEMENTS
 WESTLAKE, FLORIDA

DATE	09/06/2023
DRAWN BY	RHT
F.B./ PG.	N/A
SCALE	1"=50'

RYAN D. WHEELER
 PROFESSIONAL ENGINEER
 LICENSE NO. 71477
 STATE OF FLORIDA
 = FOR THE FIRM =
 DATE: May 13, 2024

JOB #	8500
SHT. NO.	03
OF	06 SHEETS



NOTES:
 1. DIMENSIONS OF SEDIMENT FILTER DETAILS MAY BE ADJUSTED FOR TYPE "9" CURB INLET TOPS.
 2. PRE-MANUFACTURED INLET SOCK MAY BE SUBSTITUTED IF APPROVED BY THE ENGINEER.
 3. SEE EROSION CONTROL PLAN FOR LOCATION AND APPLICABILITY.

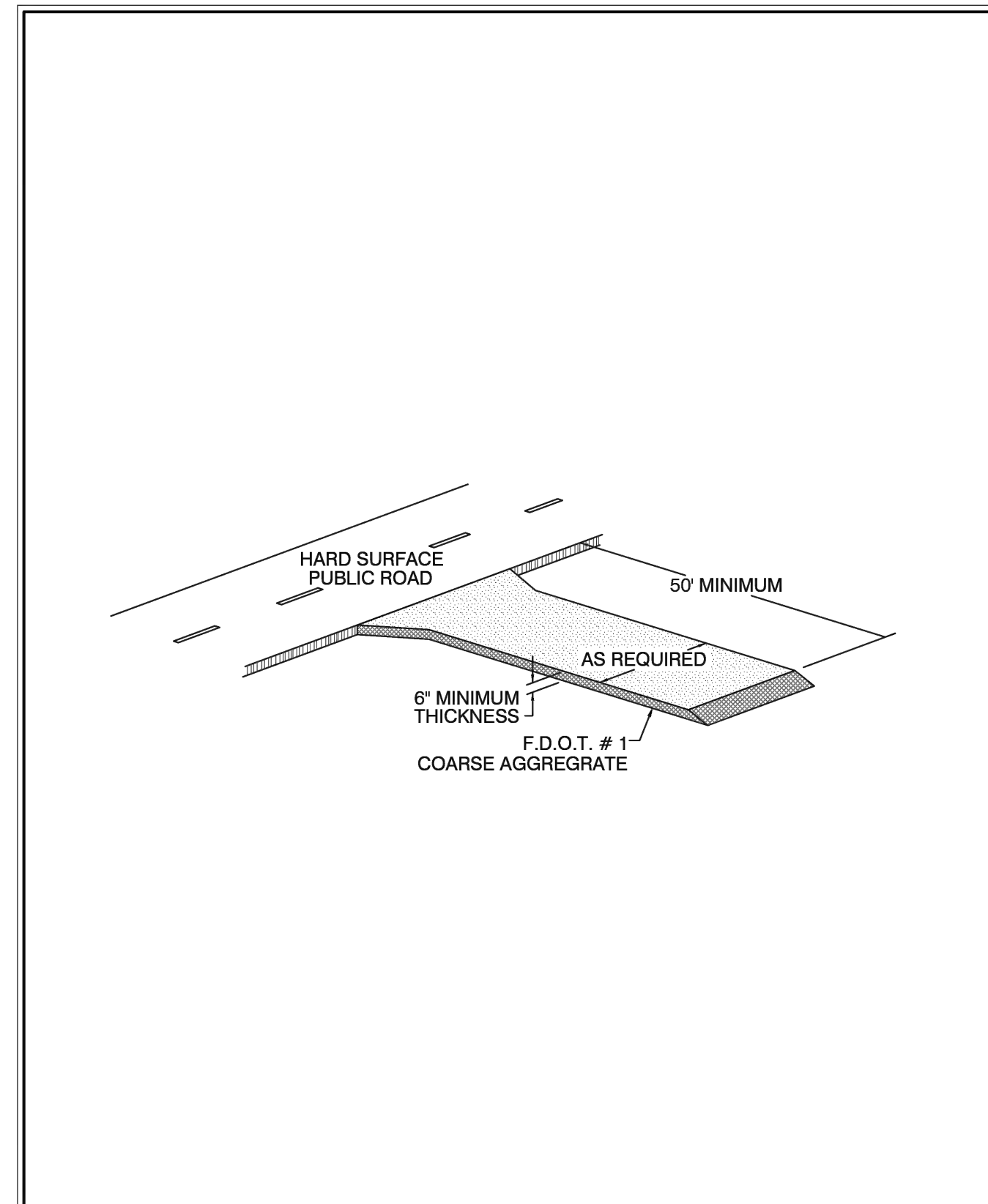
LATEST REVISION DATE: 09/01/18 NOT TO SCALE

CAULFIELD & WHEELER, INC.
 CIVIL ENGINEERING - LAND PLANNING
 LANDSCAPE ARCHITECTURE - SURVEYING
 7900 GLADES ROAD - SUITE 100
 BOCA RATON, FLORIDA 33434
 PHONE: (561) 392-1991 / FAX: (561) 750-1452

CURB INLET SEDIMENT FILTER DETAIL

SEMIOLE Improvement District
 PP-03

FILE NAME: 01_S0 POLLUTION PREVENTION DETAILS (P)1.DWG



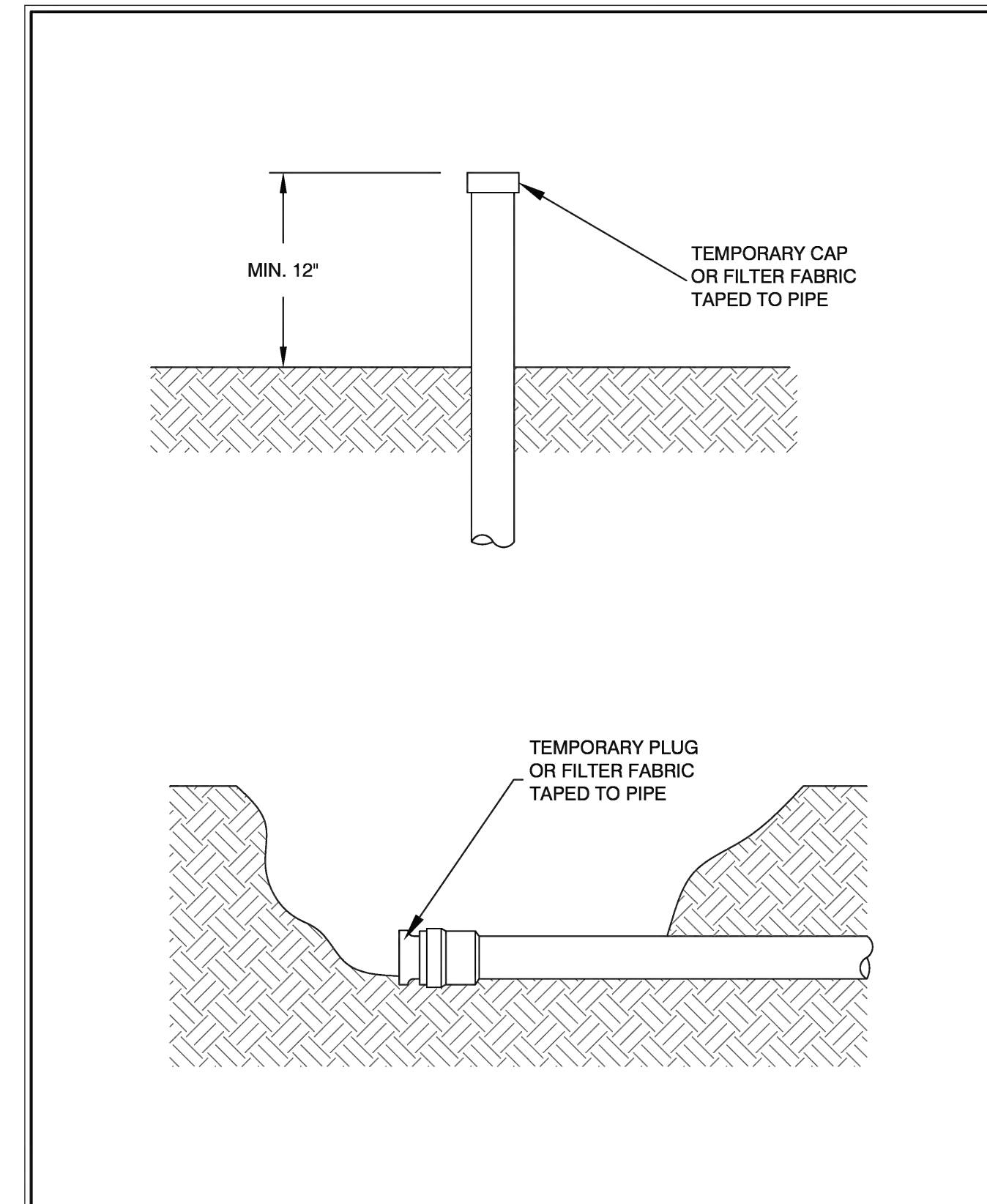
LATEST REVISION DATE: 09/01/18 NOT TO SCALE

CAULFIELD & WHEELER, INC.
 CIVIL ENGINEERING - LAND PLANNING
 LANDSCAPE ARCHITECTURE - SURVEYING
 7900 GLADES ROAD - SUITE 100
 BOCA RATON, FLORIDA 33434
 PHONE: (561) 392-1991 / FAX: (561) 750-1452

GRAVEL CONSTRUCTION ENTRANCE DETAIL

SEMIOLE Improvement District
 PP-04

FILE NAME: 01_S0 POLLUTION PREVENTION DETAILS (P)5.DWG



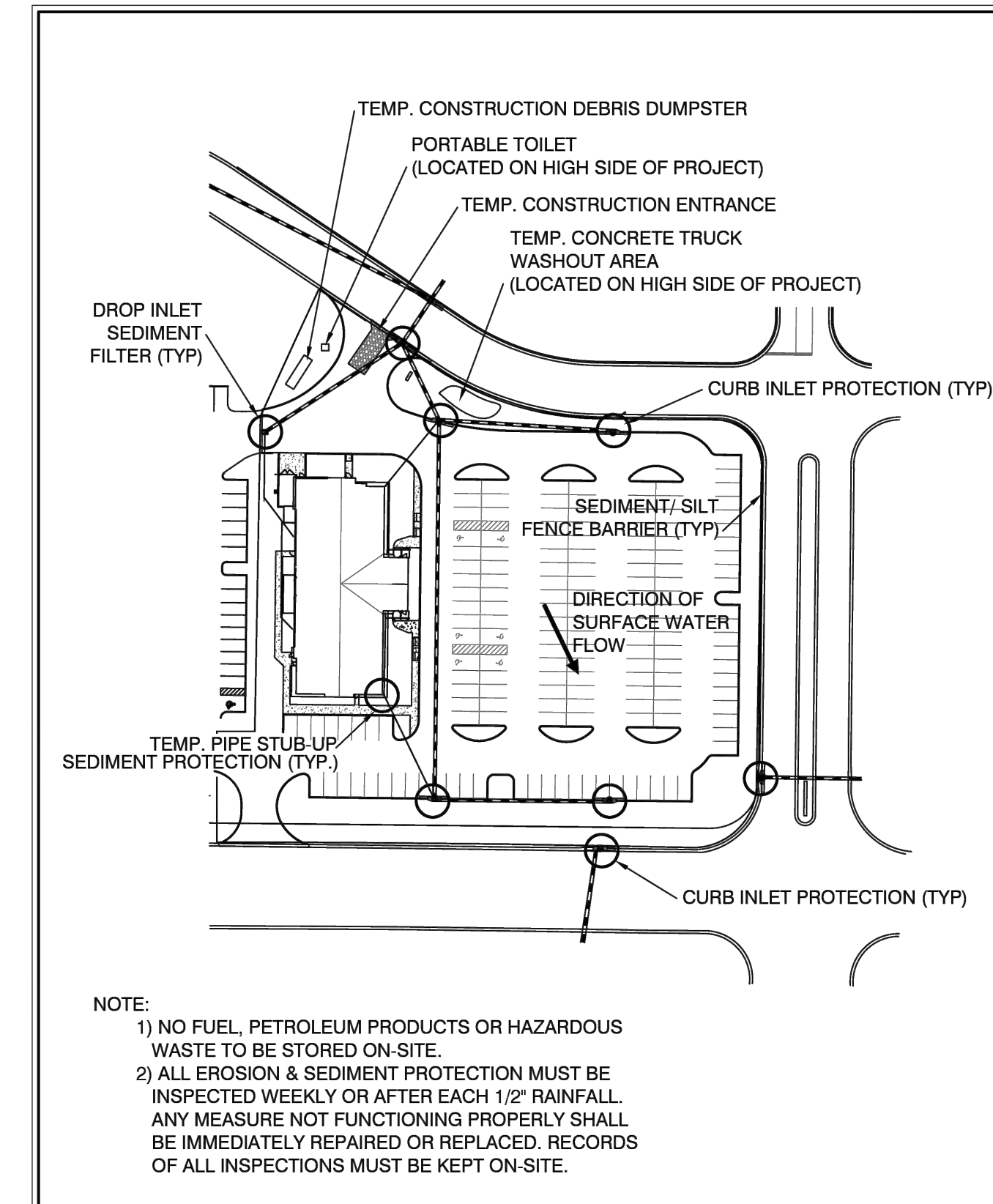
LATEST REVISION DATE: 09/01/18 NOT TO SCALE

CAULFIELD & WHEELER, INC.
 CIVIL ENGINEERING - LAND PLANNING
 LANDSCAPE ARCHITECTURE - SURVEYING
 7900 GLADES ROAD - SUITE 100
 BOCA RATON, FLORIDA 33434
 PHONE: (561) 392-1991 / FAX: (561) 750-1452

TEMPORARY PIPE END SEDIMENT PROTECTION DETAIL

SEMIOLE Improvement District
 PP-05

FILE NAME: 01_S0 POLLUTION PREVENTION DETAILS (P)9.DWG



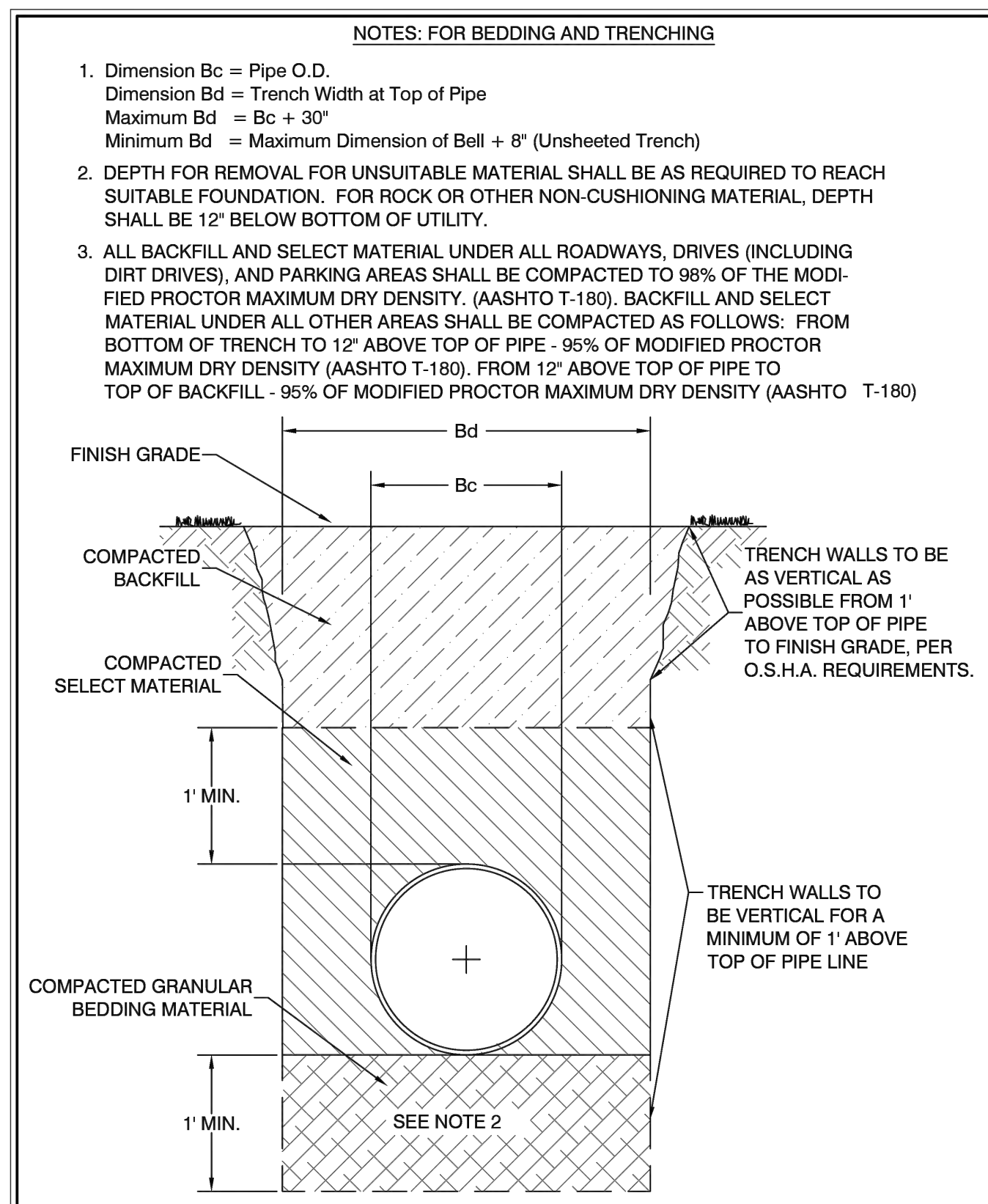
LATEST REVISION DATE: 09/01/18 NOT TO SCALE

CAULFIELD & WHEELER, INC.
 CIVIL ENGINEERING - LAND PLANNING
 LANDSCAPE ARCHITECTURE - SURVEYING
 7900 GLADES ROAD - SUITE 100
 BOCA RATON, FLORIDA 33434
 PHONE: (561) 392-1991 / FAX: (561) 750-1452

SAMPLE EROSION AND SEDIMENT CONTROL PLAN DETAIL

SEMIOLE Improvement District
 PP-06

FILE NAME: 01_S0 POLLUTION PREVENTION DETAILS (P)9.DWG



NOTES: FOR BEDDING AND TRENCHING

1. Dimension Bc = Pipe O.D.
 Dimension Bd = Trench Width at Top of Pipe
 Maximum Bd = Bc + 30"
 Minimum Bd = Maximum Dimension of Bell + 8" (Unsheeted Trench)
2. DEPTH FOR REMOVAL FOR UNSUITABLE MATERIAL SHALL BE AS REQUIRED TO REACH SUITABLE FOUNDATION. FOR ROCK OR OTHER NON-CUSHIONING MATERIAL, DEPTH SHALL BE 12" BELOW BOTTOM OF UTILITY.
3. ALL BACKFILL AND SELECT MATERIAL UNDER ALL ROADWAYS, DRIVES (INCLUDING DIRT DRIVES), AND PARKING AREAS SHALL BE COMPACTED TO 98% OF THE MODIFIED PROCTOR MAXIMUM DRY DENSITY. (AASHTO T-180). BACKFILL AND SELECT MATERIAL UNDER ALL OTHER AREAS SHALL BE COMPACTED AS FOLLOWS: FROM BOTTOM OF TRENCH TO 12" ABOVE TOP OF PIPE - 95% OF MODIFIED PROCTOR MAXIMUM DRY DENSITY (AASHTO T-180). FROM 12" ABOVE TOP OF PIPE TO TOP OF BACKFILL - 95% OF MODIFIED PROCTOR MAXIMUM DRY DENSITY (AASHTO T-180)

LATEST REVISION DATE: 01/13/18 NOT TO SCALE

CAULFIELD & WHEELER, INC.
 CIVIL ENGINEERING - LAND PLANNING
 LANDSCAPE ARCHITECTURE - SURVEYING
 7900 GLADES ROAD - SUITE 100
 BOCA RATON, FLORIDA 33434
 PHONE: (561) 392-1991 / FAX: (561) 750-1452

STANDARD PIPE BEDDING DETAIL

SEMIOLE Improvement District
 GU-03

FILE NAME: 04_S0 GENERAL UTILITY DETAILS (G)3.DWG

BY	
DATE	
REVISIONS	
FILE NAME	01_S0_Perv_Drainage.dwg

CAULFIELD & WHEELER, INC.
 CIVIL ENGINEERING - LAND PLANNING
 LANDSCAPE ARCHITECTURE - SURVEYING
 7900 GLADES ROAD - SUITE 100
 BOCA RATON, FLORIDA 33434
 PHONE: (561) 392-1991 / FAX: (561) 750-1452

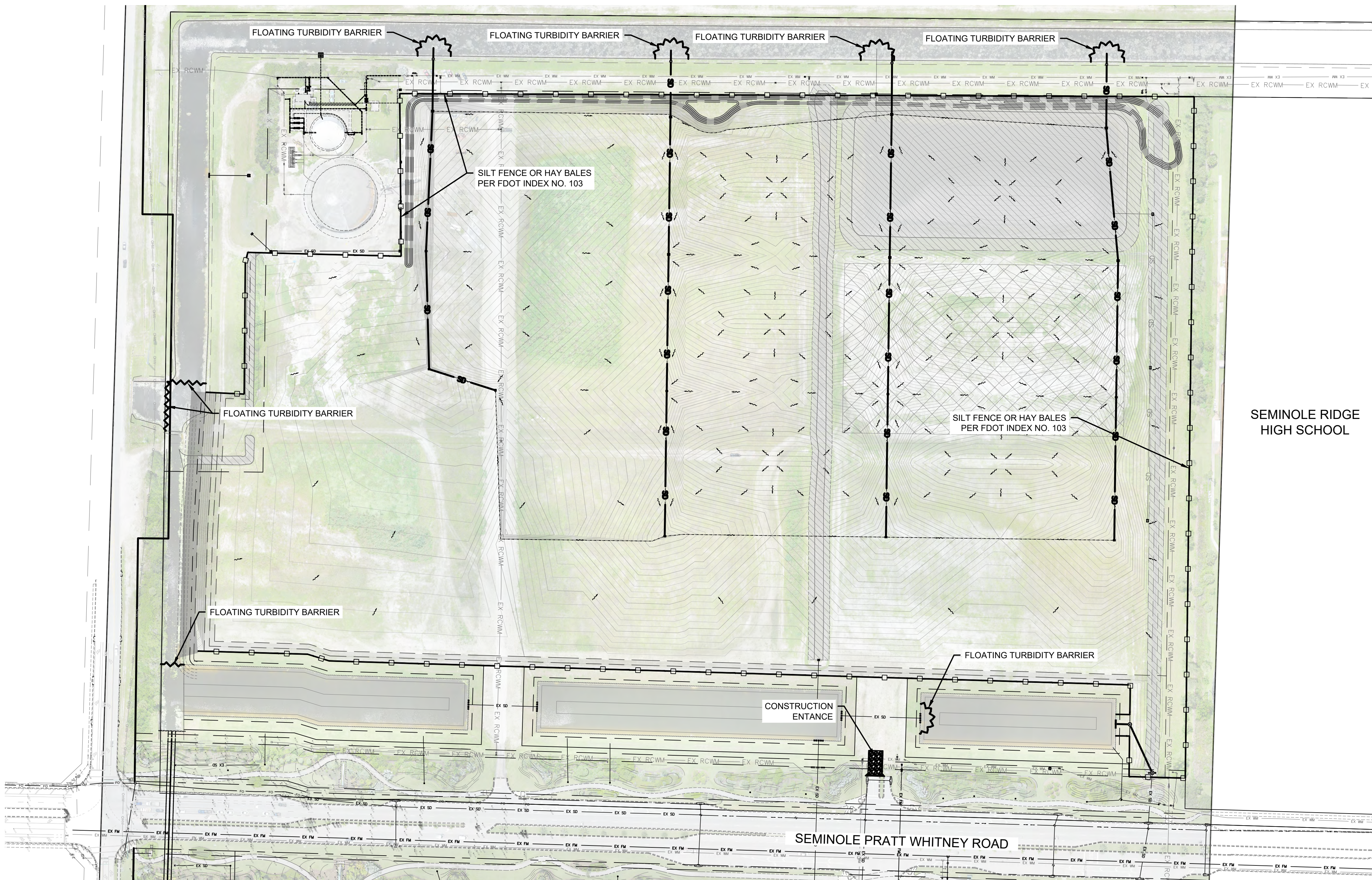
SEMIOLE IMPROVEMENT DISTRICT / WESTLAKE PARK PARCEL C-4

PAVING, GRADING, & DRAINAGE DETAILS
 WESTLAKE, FLORIDA

DATE 09/06/2023
 DRAWN BY RHT
 F.B./ PG. N/A
 SCALE N/A

RYAN D. WHEELER
 PROFESSIONAL ENGINEER
 LICENSE NO. 71477
 STATE OF FLORIDA
 - FOR THE FIRM -
 DATE: May 13, 2024

JOB # 8500
 SHT. NO.
04
 OF 06 SHEETS



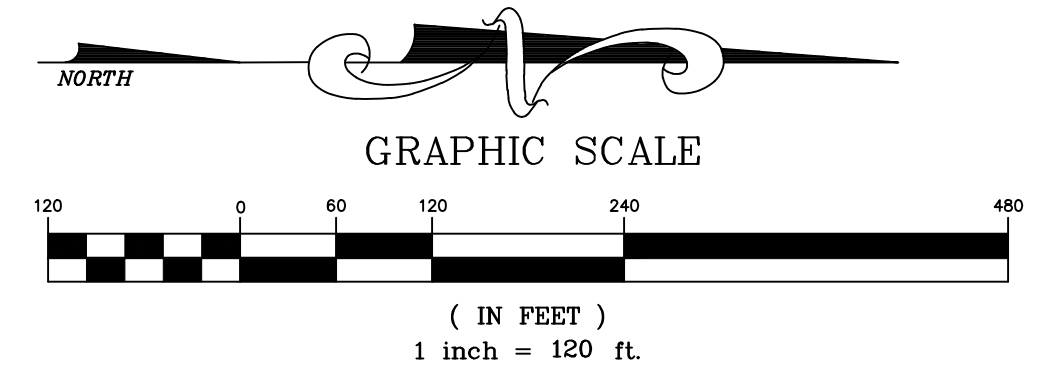
DEFINITIONS

1. COUNTY – PALM BEACH COUNTY
2. CONTRACTOR – UTILITY CONTRACTOR AND ALL UTILITY SUBCONTRACTORS
3. ENGINEER – ENGINEER RESPONSIBLE FOR INSPECTION AND CERTIFICATION

PROCEDURE

1. A PRE-CONSTRUCTION MEETING IS TO BE HELD PRIOR TO DELIVERY OF MATERIALS AND INITIATION OF ANY WATER AND SEWER CONSTRUCTION. THE MEETING SHALL BE ATTENDED BY THE COUNTY, CONTRACTOR, SUBCONTRACTORS, ENGINEER AND OTHER INTERESTED PARTIES.
2. ANY REVISIONS TO THE APPROVED PLANS MUST BE APPROVED BY THE COUNTY PRIOR TO THE PRE-CONSTRUCTION MEETING.
3. A MINIMUM OF THREE (3) COPIES OF THE CURRENT APPROVED PRODUCT LIST AND ALL NECESSARY SHOP DRAWINGS SHALL BE SUBMITTED FOR APPROVAL PRIOR TO SCHEDULING THE PRE-CONSTRUCTION MEETING. ALL PIPE MANUFACTURERS SHALL SUBMIT THREE (3) COPIES OF AN AFFIDAVIT THAT THE PIPE AND COATINGS WERE MANUFACTURED IN ACCORDANCE WITH AWWA C151/A21.51-91.
4. ALL APPLICABLE PERMITS MUST BE OBTAINED WITH COPIES PROVIDED TO THE COUNTY PRIOR TO COMMENCEMENT OF CONSTRUCTION.
5. THE CONTRACTOR SHALL MAINTAIN A CURRENT APPROVED SET OF CONSTRUCTION DOCUMENTS ON SITE AT ALL TIMES.
6. ALL MATERIALS SUPPLIED SHALL CONFORM TO PRODUCT LIST AND SHOP DRAWINGS AS APPROVED BY THE COUNTY PRIOR TO CONSTRUCTION. ALL REQUESTS FOR MATERIAL SUBSTITUTION SHALL BE APPROVED PRIOR TO DELIVERY OF THESE MATERIALS TO THE JOB SITE.
7. THE LOCATION OF THE EXISTING UTILITIES AS SHOWN ON THE PLANS ARE APPROXIMATE ONLY. THE EXACT LOCATIONS SHALL BE DETERMINED BY THE CONTRACTOR PRIOR TO CONSTRUCTION. IN ADDITION, THE CONTRACTOR SHALL BE RESPONSIBLE TO VERIFY IF OTHER UTILITIES (NOT SHOWN ON THE PLAN) EXIST WITHIN THE AREA OF CONSTRUCTION. SHOULD THERE BE UTILITY CONFLICTS, THE CONTRACTOR SHALL INFORM THE COUNTY AND NOTIFY THE RESPECTIVE UTILITY OWNER TO RESOLVE THE UTILITY CONFLICTS AND THE UTILITY ADJUSTMENTS AS REQUIRED.
8. THE CONTRACTOR SHALL BE RESPONSIBLE AT ALL TIMES THROUGHOUT THE DURATION OF CONSTRUCTION FOR THE PROTECTION OF EXISTING AND NEWLY INSTALLED UTILITIES FROM DAMAGE OR DISRUPTION OF SERVICE. THE CONTRACTOR SHALL BE RESPONSIBLE FOR TAKING SUCH MEASURES AS NECESSARY TO PROTECT THE HEALTH, SAFETY, AND WELFARE OF THOSE PERSONS HAVING ACCESS TO THE WORK SITE.
9. THE CONTRACTOR SHALL BE RESPONSIBLE FOR OBTAINING LOCATIONS OF ALL OTHER UTILITY FACILITIES.
10. THE CONTRACTOR SHALL SCHEDULE INSPECTIONS AND TESTS WITH THE COUNTY A MINIMUM OF 24 HOURS IN ADVANCE.
11. CONTRACTOR SHALL NOT DISTURB EXISTING COUNTY MAINS OR STRUCTURES WITHOUT THE PRESENCE OF A COUNTY INSPECTOR. COUNTY UTILITY SYSTEM VALVES AND APPURTENANCES MAY ONLY BE OPERATED BY COUNTY PERSONNEL.
12. FACILITIES PROPOSED HEREIN SHALL BE CONSTRUCTED IN ACCORDANCE WITH THE APPROVED PLANS. DEVIATIONS FROM THE APPROVED PLANS MUST BE APPROVED IN ADVANCE BY THE COUNTY.
13. UPON COMPLETION OF CONSTRUCTION AND PRIOR TO FINAL ACCEPTANCE OF THE WORK, A FINAL INSPECTION SHALL VERIFY PROPER ADHERENCE TO ALL FACETS OF THE PLANS AND SPECIFICATIONS.
14. PAVING, DRAINAGE AND TRAFFIC CONSTRUCTION SHALL CONFORM TO FLORIDA DEPARTMENT OF TRANSPORTATION ROADWAY AND DESIGN STANDARDS, STANDARD SPECIFICATIONS FOR ROAD AND BRIDGE CONSTRUCTION, MANUAL ON UNIFORM TRAFFIC CONTROL DEVICES (MUTCD) AND PALM BEACH COUNTY TYPICAL No. T-P-18 UNLESS SHOWN OTHERWISE.
15. AS-BUILT DRAWINGS SHALL BE PREPARED BY A REGISTERED LAND SURVEYOR, REGISTERED IN THE STATE OF FLORIDA, AND SUBMITTED BY THE CONTRACTOR TO THE COUNTY.

16. PRIOR TO COMMENCEMENT OF ANY EXCAVATION, THE CONTRACTOR SHALL COMPLY WITH FLORIDA STATUTE 553-851 FOR PROTECTION OF UNDERGROUND GAS PIPE LINES.
 17. CONTRACTOR SHALL NOTIFY SUNSHINE STATE ONE (1-800-432-4770) 48 HOURS IN ADVANCE OF CONSTRUCTION.
 18. GRADES SHOWN ON PLANS ARE FINISHED GRADES. THE CONTRACTOR SHALL BE REQUIRED TO ADJUST EXISTING SANITARY SEWER MANHOLE TOPS AND VALVE BOX COVERS TO FINISHED GRADE.
 19. CONTRACTOR SHALL MAINTAIN LOCAL TRAFFIC AT ALL TIMES DURING CONSTRUCTION AND SHALL BE REQUIRED TO PROVIDE ALL BARRICADES, LIGHTING, SIGNAGE AND FLAGMEN AS NECESSARY TO PROVIDE FOR THE SAFETY OF THE PUBLIC IN THE WORK AREA. THE CONTRACTOR SHALL SUBMIT A DETAILED TRAFFIC MAINTENANCE PLAN PRIOR TO CONSTRUCTION.
 20. EXISTING BASE MATERIAL THAT IS REMOVED DURING CONSTRUCTION SHALL NOT BE USED IN THE CONSTRUCTION OF NEW LIMEROCK BASE.
 21. ALL VEGETATION, DEBRIS, CONCRETE OR OTHER UNSUITABLE MATERIAL SHALL BE LEGALLY DISPOSED OF OFF-SITE IN AN AREA AT THE CONTRACTORS EXPENSE.
 22. CONTRACTOR SHALL UTILIZE CONSTRUCTION METHODS AND DEVICES, SUCH AS TURBIDITY SCREENS, CURTAINS AND FLOATING SILT BARRIERS WHERE NECESSARY IN ORDER TO COMPLY WITH ALL STATE AND LOCAL WATER QUALITY STANDARDS.
 23. ALL REINFORCED CONCRETE STORM SEWER PIPE SHALL BE CLASS III, UNLESS OTHERWISE NOTED.
 24. ALL PAVED SURFACES SHALL BE PROPERLY MARKED PRIOR TO HOURS OF DARKNESS. PERMANENT PAVEMENT MARKING STALLS SHALL BE LAID OUT USING MARKING CHALK. LAYOUT TO BE REVIEWED BY THE COUNTY PRIOR TO PLACEMENT OF FINAL MARKING.
 25. EMBANKMENT (FILL) AND EXCESS MATERIAL REQUIRED FOR ROADWAY RECONSTRUCTION AND UTILITY INSTALLATIONS SHALL BE SUPPLIED AND/OR DISPOSED OF BY THE CONTRACTOR. ALL COSTS ASSOCIATED WITH EARTHWORK REQUIREMENTS TO COMPLETE THE ROADWAY RECONSTRUCTION AND UTILITY IMPROVEMENTS SHALL BE INCLUDED IN THE COSTS OF OTHER APPROPRIATE PAY ITEMS.
 26. CONTINUITY OF WATER AND SEWER SERVICE TO COUNTY UTILITY CUSTOMERS SHALL BE MAINTAINED THROUGHOUT THE DURATION OF THIS PROJECT. IF A BREAK IN SERVICE IS UNAVOIDABLE TO ACCOMMODATE CONNECTION OF NEW FACILITIES, IT SHALL BE SCHEDULED FOR OFF PEAK HOURS WITH THE COUNTY. DETERMINATION OF SERVICE BREAK REQUIREMENT WILL BE MADE BY THE COUNTY.
- SITE INFORMATION BASED ON A SURVEY PREPARED BY: **GEOPONT SURVEYING / CAULFIELD & WHEELER, INC.**
27. RELOCATION OF UTILITY POLES AND GAS PIPE LINES SHALL BE COORDINATED BY THE CONTRACTOR WITH FLORIDA POWER AND LIGHT, AND FLORIDA PUBLIC UTILITIES, RESPECTIVELY. EACH UTILITY HAS BEEN NOTIFIED THAT THEY WILL BE REQUIRED TO RELOCATE THEIR UTILITIES.



REVISIONS	DATE	BY

CAULFIELD & WHEELER, INC.
 CIVIL ENGINEERING - LAND PLANNING
 LANDSCAPE ARCHITECTURE - SURVEYING
 7900 GLADES ROAD - SUITE 100
 BOCA RATON, FLORIDA 33434
 PHONE (561) 392-1991 / FAX (561) 750-1452

SEMINOLE IMPROVEMENT DISTRICT /
 WESTLAKE PARK PARCEL C-4
POLLUTION PREVENTION PLAN
 WESTLAKE, FLORIDA

DATE 09/06/2023
 DRAWN BY RHT
 F.B./ P.C. N/A
 SCALE 1"=120'

RYAN D. WHEELER
 PROFESSIONAL ENGINEER
 LICENSE NO. 71477
 STATE OF FLORIDA
 FOR THE FIRM -
 DATE: May 13, 2024

JOB # 8500
 SHT. NO.
06
 OF 06 SHEETS